



# Quick Installation Guide

Applicable Models

AS3302T v2 / AS3304T v2

Ver. 4.2.3.0816

## Table of Contents

<b>NOTICES</b> .....	<b>3</b>
<b>SAFETY PRECAUTIONS</b> .....	<b>4</b>
<b>1. PACKAGE CONTENTS</b> .....	<b>5</b>
<b>2. OPTIONAL ACCESSORIES</b> .....	<b>7</b>
<b>3. HARDWARE INSTALLATION GUIDE</b> .....	<b>8</b>
TOOLS NEEDED FOR HARD DISK INSTALLATION .....	8
HARD DISK INSTALLATION .....	8
SECURING THE POWER CORD .....	10
CONNECTING AND POWERING ON THE NAS .....	13
<b>4. SOFTWARE INSTALLATION GUIDE</b> .....	<b>14</b>
DOWNLOAD CENTER INSTALLATION .....	14
WEB INSTALLATION .....	16
INSTALLATION USING A MOBILE DEVICE .....	17
<b>5. APPENDIX</b> .....	<b>19</b>
LED INDICATORS.....	19
FRONT PANEL.....	20
REAR PANEL.....	21
SHUTTING DOWN YOUR NAS.....	22
TROUBLESHOOTING .....	23

## Notices

---



### Federal Communications Commission Statement

This device complies with FCC Rules Part 15. Operation is subject to the following two conditions:

- ➔ This device may not cause harmful interference.
- ➔ This device must accept any interference received, including interference that may cause undesired operation.

This equipment has been tested and found to comply with the limits for a class A digital device, pursuant to Part 15 of the Federal Communications Commission (FCC) rules. These limits are designed to provide reasonable protection against harmful interference in a residential installation. This equipment generates, uses, and can radiate radio frequency energy and, if not installed and used in accordance with the instructions, may cause harmful interference to radio communications. However, there is no guarantee that interference will not occur in a particular installation. If this equipment does cause harmful interference to radio or television reception, which can be determined by turning the equipment off and on, the user is encouraged to try to correct the interference by one or more of the following measures:

- ➔ Reorient or relocate the receiving antenna.
- ➔ Increase the separation between the equipment and receiver.
- ➔ Connect the equipment into an outlet on a circuit different from that to which the receiver is connected.
- ➔ Consult the dealer or an experienced radio/TV technician for help.

Changes or modifications not expressly approved by the party responsible for compliance could void the user's authority to operate the equipment.

### CE Mark Warning



#### CE marking for devices without wireless LAN/Bluetooth

The shipped version of this device complies with the requirements of the EEC directives 2004/108/EC "Electromagnetic compatibility" and IEC60950-1:2005 (2nd Edition)+A1:2009 "Information technology equipment-Safety".

## Safety Precautions

---

The following safety precautions will increase the life of the NAS. Follow all precautions and instructions.

### Electrical Safety

Unplug this product from the power source before cleaning.

Use only the bundled power adapter. Using other power adapters may damage your device.

Ensure that you plug the power adapter to the correct power input rating. Check the label on the power adapter for the power rating.

### Operation Safety

- DO NOT place this product in a location where it may get wet.
- Place this product on a flat and stable surface.
- Use this product in environments with an ambient temperature between 0°C and 40°C.
- DO NOT block the air vents on the case of this product. Always provide proper ventilation for this product.
- DO NOT insert any object or spill liquid into the air vents. If you encounter technical problems with this product, contact a qualified service technician or your retailer. DO NOT attempt to repair this product yourself.








### **DO NOT throw this product in municipal waste.**

This product has been designed to enable proper reuse of parts and recycling. This symbol of the crossed out wheeled bin indicates that the product (electrical and electronic equipment) should not be placed in municipal waste. Check local regulations for disposal of electronic products.

# 1. Package Contents

Applicable Models: AS3302T v2, AS3304T v2

Model Name	 AS3302T v2	 AS3304T v2
 Power Cord	x1	x1
 Adapter	x1	x1
 RJ45 Network Cable	x1	x1
 Screws for use with 2.5" HDD	x8	x16
 Power Cord Bracket	x1	x1



**Quick Installation Guide**

x1

x1

## 2. Optional Accessories

---

The items below may be purchased from the ASUSTOR Accessories Store <http://shop.asustor.com>.

### 3. Hardware Installation Guide

All data stored on the hard disk(s) will be erased and CANNOT be recovered. Please back up all important data before initializing the system.

#### Tools Needed for Hard Disk Installation

- Phillips head screwdriver
- At least one 2.5 or 3.5 inch SATA hard disk. (For a list of compatible hard disks, please see <http://www.asustor.com/service/hd?id=hd>)

#### Hard Disk Installation

1. Remove the front panel as shown in the image below.

**AS3302T v2**



**AS3304T v2**



2. Using the latch, gently pull the disk tray out of the disk bay.

**AS3302T v2**



**AS3304T v2**





3. Mount the hard disk to the disk tray.

- ✓ **To install a 3½" hard drive**, please remove the two rails on both sides of the hard drive tray. Place the hard drive into the tray, align and insert the rails to secure the hard drive and insert it into the NAS.

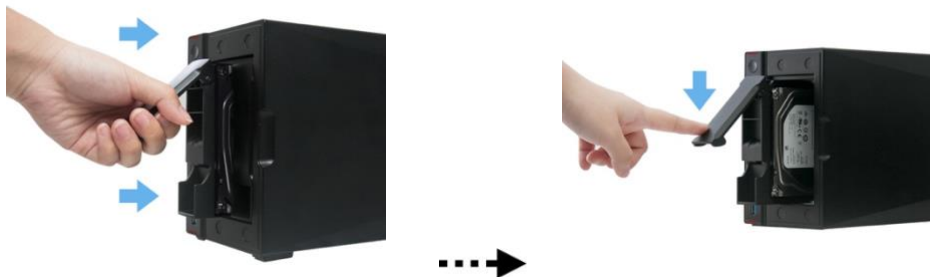


- ✓ **To install a 2½" hard drive**, please remove the two rails on both sides of the hard drive tray. Align the hard drive with the 4 holes labeled 2.5" with the SATA connector facing outward. While maintaining a grip on the hard drive and tray, turn the tray upside down and secure the drive with four included M3 screws as demonstrated below.



4. Slide the disk tray onto the rails of the disk bay. Using the latch, gently push the disk tray all the way into the disk bay. Secure the disk tray in place by pushing down on the latch. The latch should close easily and snap in with an audible 'click'. Please make sure that the disk tray is pushed all the way into the disk bay before attempting to secure the latch.

**AS3302T v2**



**AS3304T v2**



5. Return the front panel.

**AS3302T v2**



**AS3304T v2**



## Securing the Power Cord

**Note:** You can use the provided cord bracket to secure the power cord in place, if you are concerned about the NAS power cord becoming detached when the NAS is moved.

- Attach the bracket to the power cord as shown in the graphic below.

**AS3302T v2**



**AS3304T v2**



Your NAS may contain a cable tie that can be fastened to the NAS to secure the power cable. For installation instructions, please follow the steps below.

- Take the cord bracket out of the accessories box.



- Attach the bracket to the power cord as shown in the graphic below.



- Remove the fan screw by unscrewing it counter-clockwise.

**AS3302T v2**



**AS3304T v2**



- Position the bracket over the hole for the removed fan screw. Secure the bracket in place by replacing the fan screw.

**AS3302T v2**



**AS3304T v2**



## Connecting and Powering on the NAS

1. Connect the NAS to its power supply.

**AS3302T v2**



**AS3304T v2**



2. Connect the NAS to your router, switch or hub using an Ethernet cable.
3. Press and hold down the power button for 1 – 2 seconds until the blue power LED indicator is lit. This indicates that the NAS is now powered on. While the NAS is being powered on, the green system status LED indicator will flash and the blue network LED indicator will be lit as well.

**AS3302T v2**



**AS3304T v2**



4. The NAS is ready for operation once the green system status LED indicator has stopped flashing and remains steadily lit. At this time, you should also hear a 'beep' from the system buzzer. Hardware installation is now complete. Please move on to the software installation guide to configure your system settings.

## 4. Software Installation Guide

There are 3 different installation methods that you can choose from. Please select the method most suitable for you. You can go to the download section of the ASUSTOR website (<http://www.asustor.com/service/downloads>) to download the latest software.

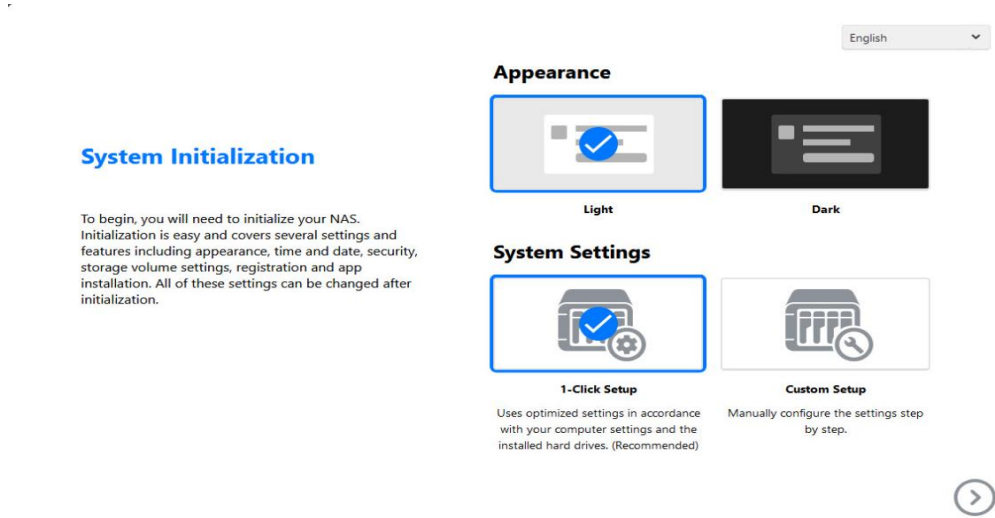
### Download Center Installation

#### Windows Users

- After ASUSTOR Control Center has been installed, it will automatically begin to scan your network for ASUSTOR NAS devices.

Name	IP	Model	Serial Number	MAC Address	ADM Version	Status	Enable
AS6208T-80F7	172.16.2.35	AS6208T	AS16066210TM0007	10:bf:48:8b:80:f7	3.4.1.R7Q6	Ready	
AS3202T-LEO	172.16.9.116	AS3202T	AS16073204TM0003	10:bf:48:9b:86:99	3.4.3.B9R1	Ready	
AS6102T-87CE-MM	172.16.2.24	AS6102T	AS16076104TM0341	10:bf:48:8b:88:64	3.4.2.R932	Ready	
AS6204T-88DF	172.16.1.121	AS6204T	AS16076204TM0144	10:bf:48:8b:88:df	3.4.0.R7N3	Ready	
AS6204R	172.16.10.130	AS6204R	AS16076212RM0006	10:bf:48:8b:8b:bf	2.6.2.R6L2	Ready	
Surveillance	172.16.2.179	AS6204R	AS16076212RM0009	10:bf:48:8b:8b:b8	2.7.3.RHQ3	Ready	
AS-6212R-S	172.16.10.31	AS6212R	AS16076212RM0011	10:bf:48:8b:8b:9b	3.5.0.A9G1	Ready	
AS4004T-Jean	172.16.1.62	AS4004T	AS20180620TM0215	00:51:82:11:22:02	3.4.3.B9G1	Ready	
AS5110T-5129-S	172.16.2.77	AS5110T	AS25015110TM0000	20:14:12:10:51:2b	3.4.2.R932	Ready	
AS7008T-00r01-ri	172.16.2.10	AS7008T	AS87654321TM3333	20:14:08:27:00:01	3.5.0.A9G1	Ready	
AS6202T-AAA	172.16.2.105	AS6202T	ASUSTORRDTTEST	20:15:07:13:62:04	3.3.1.RIH2	Ready	
AS-604T-vivian	172.16.1.109	AS-604T	AT1207608MB0047	10:bf:48:89:c4:2e	3.5.0.A9R1	Ready	
AS-604T-C534	172.16.2.218	AS-604T	AT1207608MB00EA	10:bf:48:89:c5:33	3.4.3.B9K1	Ready	

- Select your NAS from the list and follow the installation wizard's instructions to complete the configuration process.

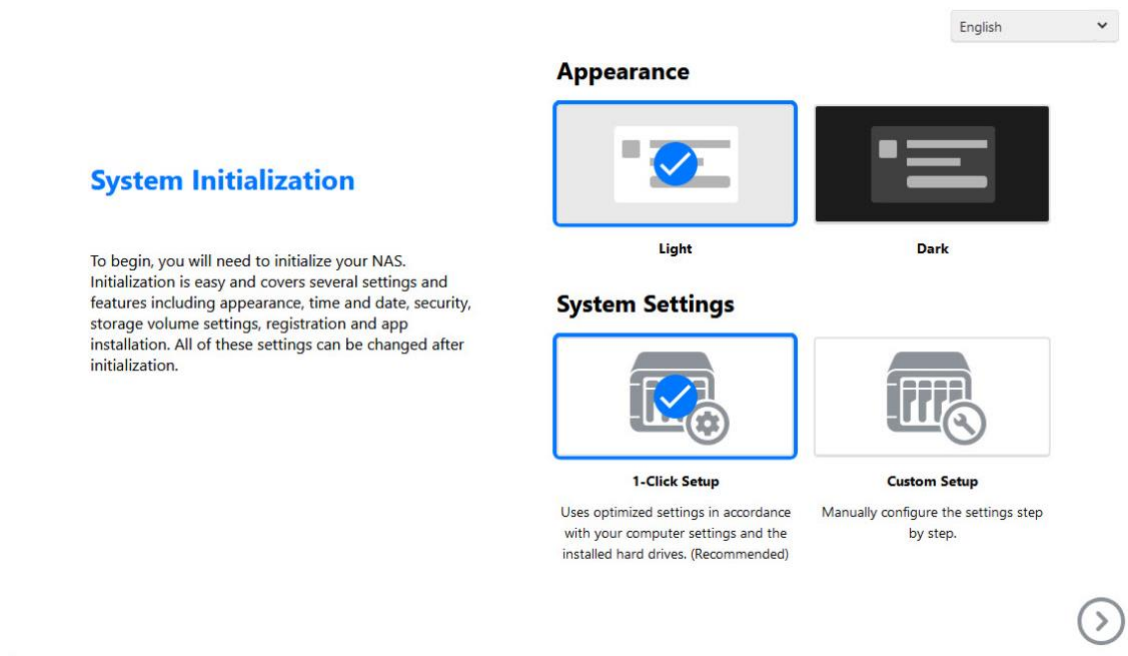


## Mac Users

1. After ASUSTOR Control Center has been installed, it will automatically begin to scan your network for ASUSTOR NAS devices.

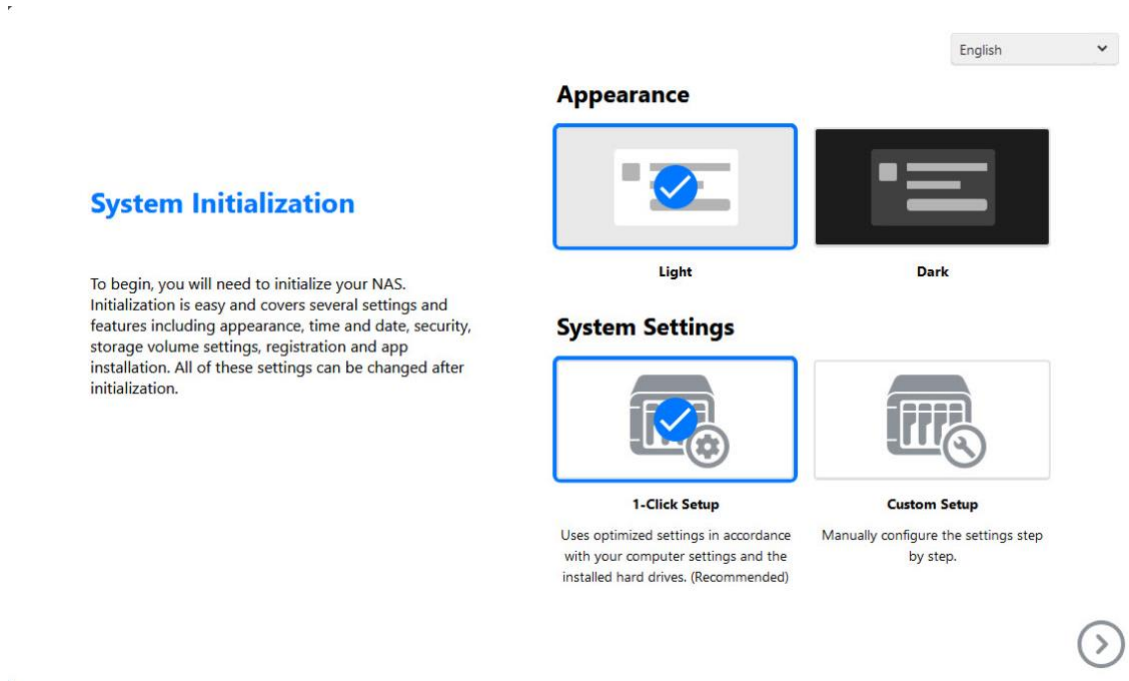
Name	IP Address	Model	Serial Number	MAC address	ADM Version	Status	WOL
AS1004T-1124-rr	172.16.1.53	AS1004T...	AL18041004EM00FB	20:18:11:15:11:24	3.4.2.R932	Ready	--
AS1002T-76BE	172.16.2.117	AS1002T...	AL18041004EM0119	10:BF:48:8C:76:BE	3.4.3.BA21	Ready	--
MARCO4004T	172.16.2.196	AS4004T	AL18054004TM00EC	10:BF:48:8C:7D:FB	3.4.1.R7Q6	Ready	--
AS4002T-RUDY	172.16.1.167	AS4002T	AL18064004TM0021	10:BF:48:8C:95:DA	3.4.2.R932	Ready	--
AS4002T-9B26	172.16.2.160	AS4002T	AL18064004TM0035	10:BF:48:8C:9B:26	3.4.3.BA21	Ready	--
AS6404T-1400TC	172.16.1.3	AS6404T	AL18076404TM0030	20:18:12:12:14:00	3.4.2.R932	Ready	--
AS1004T-LEO	172.16.2.156	AS1004T...	AL18081004EM03DF	20:19:02:19:16:1A	3.4.3.BA21	Ready	--
AS6302T-CDCF-ri	172.16.10.235	AS6302T	AL18116304TM012B	10:BF:48:8C:DC:8D	3.3.1.BHT1	Ready	--
AS6404T-DD51-AA	172.16.3.94	AS6404T	AL18116404TM005E	10:BF:48:8C:DD:51	3.4.2.R932	Ready	--
AS6404T-jinnnnnnnnnn...	172.16.1.142	AS6404T	AL18116404TM0064	10:BF:48:8C:DD:59	3.4.3.B9R1	Ready	--

2. Select your NAS from the list and follow the installation wizard's instructions to complete the configuration process.



## Web Installation

1. If you already know your NAS's current IP address, you can open up a web browser and enter in your NAS's IP address (for example: http://192.168.1.168:8000) to begin initialization.
2. Please follow the instructions from the installation wizard to complete the configuration process.

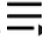


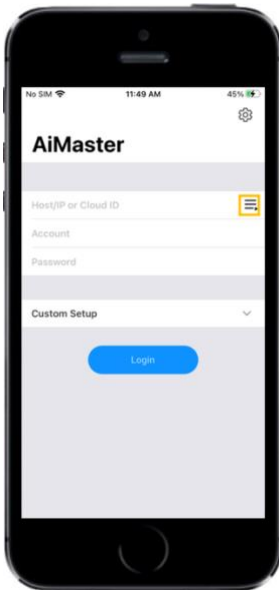


## Installation Using a Mobile Device

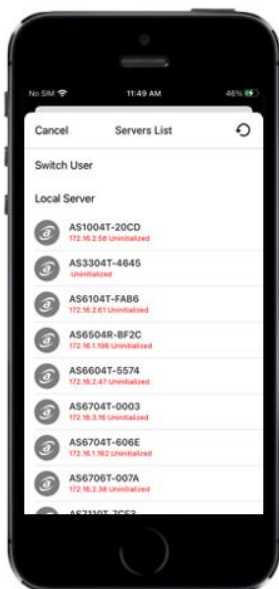
1. Search for “AiMaster” in Google Play or the Apple App Store. You can also scan the QR codes provided below. Download and install the AiMaster mobile app to your mobile device.



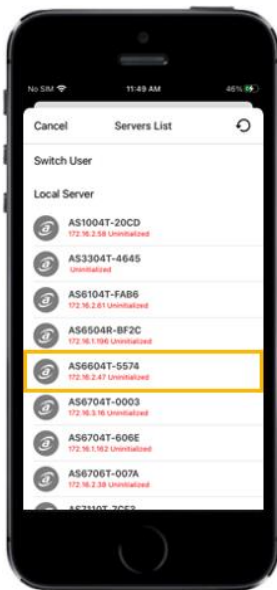
2. Make sure that your mobile device is connected to the same local network that your NAS is connected to.
3. Next, open AiMaster and then select the  icon from the toolbar at the top of the screen.



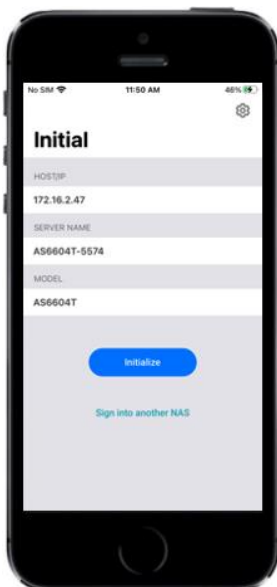
4. Select **[Auto Discovery]**. AiMaster will now scan the local network for your NAS.



- Select your NAS from the list that appears.



- Select **[Start Initialization]** to begin installation. Follow the prompts and instructions to complete the configuration process.



## 5. Appendix

### LED Indicators

AS3302T v2

AS3304T v2



- 1 Power LED Indicator
- 4 USB LED Indicator
- 2 System Status LED Indicator
- 5 Hard Disk LED Indicator
- 3 Network LED Indicator

LED Indicator	Color	Description	State
Power	Blue	Steadily lit	Power on
	Orange	Flashes every 10 seconds	LED night mode
System Status	Green	Flashing	Powering on
		Steadily lit	System ready
Network	Blue	Steadily lit	1 Gigabit Network port connected
	Purple	Steadily lit	2.5 Gigabit Network port connected

USB	Green	Steadily lit	The USB device connected to the front of the NAS is ready for use
		Flashing	Data access in progress
Hard Disk	Green	Steadily lit	Hard disk ready
		Flashing	Data access in progress
	Red	Steadily lit	Hard disk abnormality

## Front Panel

AS3302T v2



- 1 Power Button
- 2 One Touch Backup Button
- 3 USB 3.2 Gen 1 Port
- 4 HDD1

AS3304T v2



- 5 HDD2
- 6 HDD3
- 7 HDD4

## Rear Panel

AS3302T v2

AS3304T v2



- 1** USB 3.2 Gen 1 Port
- 2** 2.5 Gigabit RJ-45 Port
- 3** Reset Button

- 4** DC Input
- 5** System Fan
- 6** K-Lock

## Shutting Down Your NAS

1. Confirm the function settings for the power button as shown in the graphic below. When the power button is held down for 1.5 seconds you can decide whether to shut down the NAS or have it enter into sleep mode. This setting may be access from within ADM by selecting: [Settings]→[Hardware] → [Power] → [Settings].

The screenshot shows the Asustor ADM Settings interface. The left sidebar lists various settings categories, with 'Hardware' selected. The main content area is titled 'Power' and includes sections for 'EuP Mode Configuration', 'Settings', and 'Power Scheduling'. In the 'Settings' section, the option 'Enable Wake on LAN (WOL), Wake on WAN (WOW)' is checked. Below it, a dropdown menu is set to 'Shut down NAS' for the action taken when the power button is held down for 1.5 seconds. Another dropdown is set to 'Keep previous state' for when power is restored. A note states: 'Note: To keep power scheduling, Wake on LAN and Wake on WAN functional, your NAS needs to be powered on at least once after restoration of power.' The 'Power Scheduling' section has 'Add', 'Edit', and 'Remove' buttons and a table with columns for 'Day', 'Power On', 'Power Off', 'Restart', and 'Sleep'. An 'Apply' button is located at the bottom right.

2. Hold down the power button for 1.5 seconds. You should be able to hear a “beep” from the system buzzer. Let go of the power button and the NAS will either shut down or enter sleep mode depending on your configuration.

**AS3302T v2**



**AS3304T v2**



## Troubleshooting

### Q: Why can't I detect my ASUSTOR NAS using ASUSTOR Control Center?

A: If you are having trouble detecting your NAS using ASUSTOR Control Center, please do the following:

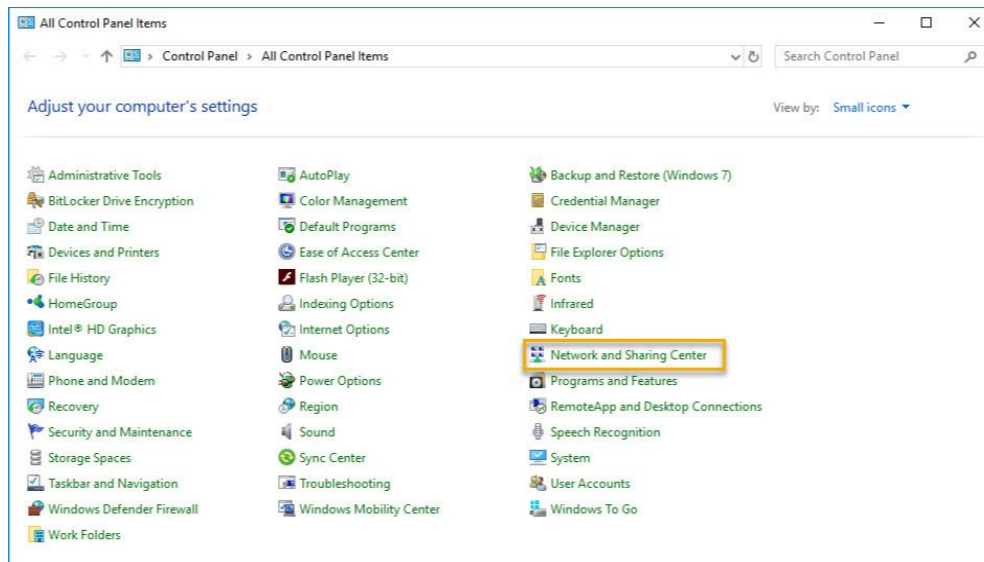
1. Please check your network connection:

- ✓ Make sure that your computer and your NAS are part of the same local area network.
- ✓ Check to see if the network LED indicator is lit. If you find that it is not lit, try connecting your Ethernet cable to the other network port or try using a different Ethernet cable.

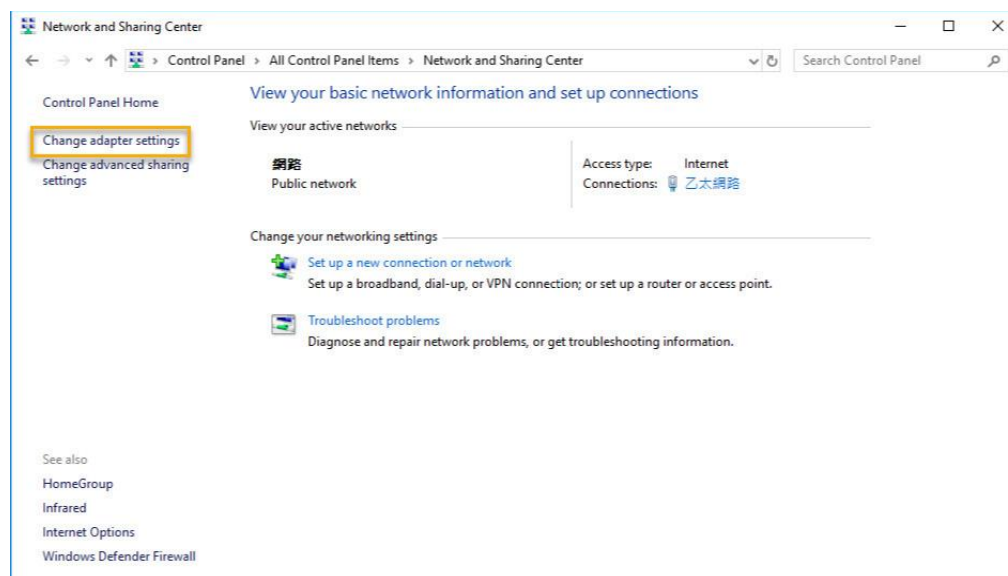
2. Please first disable any firewalls that may be running on your computer. Then try scanning for your NAS again using ASUSTOR Control Center.

3. If you still cannot detect your NAS, please connect your NAS to your computer using the provided RJ-45 network cable and change your computer's IP settings.

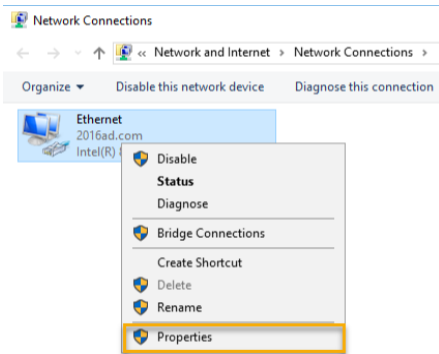
- ✓ Select **[Start]** → **[Control Panel]** → **[Network and Sharing Center]**



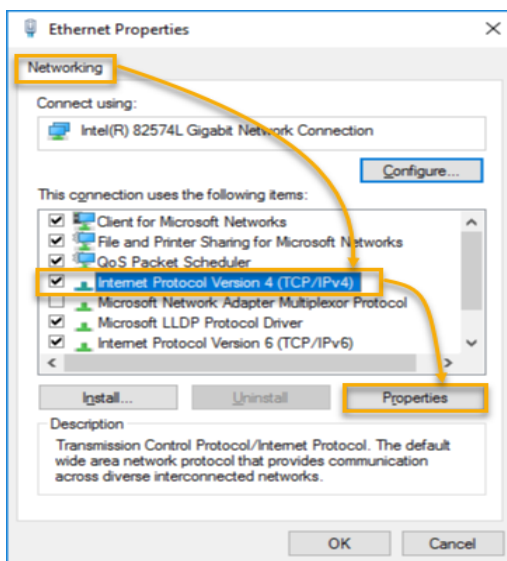
- ✓ Click on **[Change adapter settings]** in the left hand panel.



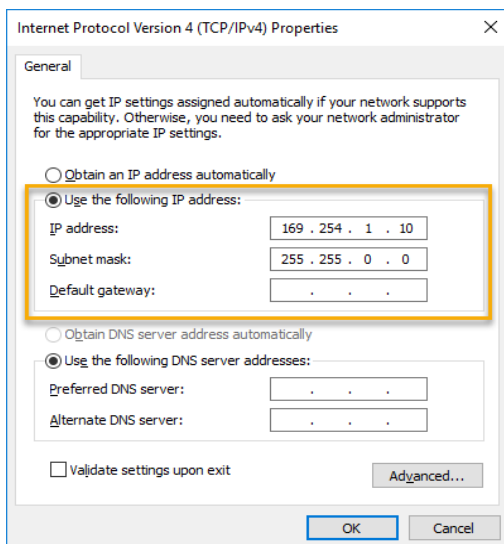
- ✓ Right-click on **[Local Area Connection]** and select **[Properties]**.



- ✓ Under the **[Networking]** tab select **[Internet Protocol Version 4 (TCP/IPv4)]** and click on **[Properties]**.



- ✓ Under the **[General]** tab select the **[Use the following IP address]** radio button. Set the **[IP address]** to **169.254.1.10** and the **[Subnet mask]** to **255.255.0.0** and then click on **[OK]**.





- ✓ Open up ASUSTOR Control Center to scan for your NAS.

The screenshot shows the ASUSTOR Control Center (ACC) interface. At the top, there is a navigation bar with icons for Scan, Open, Connect, ADM Update, Service, and Action. Below this is a table listing various NAS devices. The table has columns for Name, IP, Model, Serial Number, MAC Address, ADM Version, Status, and Enable. All devices listed have a status of 'Ready'.

Name	IP	Model	Serial Number	MAC Address	ADM Version	Status	Enable
AS6208T-80F7	172.16.2.35	AS6208T	AS16066210TM0007	10:bf:48:8b:80:f7	3.4.1.R7Q6	Ready	
AS3202T-LEO	172.16.9.116	AS3202T	AS16073204TM0003	10:bf:48:9b:86:99	3.4.3.B9R1	Ready	
AS6102T-87CE-MM	172.16.2.24	AS6102T	AS16076104TM0341	10:bf:48:8b:88:64	3.4.2.R932	Ready	
AS6204T-88DF	172.16.1.121	AS6204T	AS16076204TM0144	10:bf:48:8b:88:df	3.4.0.R7N3	Ready	
AS6204R	172.16.10.130	AS6204R	AS16076212RM0006	10:bf:48:8b:8b:bf	2.6.2.R6L2	Ready	
Surveillance	172.16.2.179	AS6204R	AS16076212RM0009	10:bf:48:8b:8b:b8	2.7.3.RHQ3	Ready	
AS-6212R-S	172.16.10.31	AS6212R	AS16076212RM0011	10:bf:48:8b:8b:9b	3.5.0.A9G1	Ready	
AS4004T-Jean	172.16.1.62	AS4004T	AS20180620TM0215	00:51:82:11:22:02	3.4.3.B9G1	Ready	
AS5110T-5129-S	172.16.2.77	AS5110T	AS25015110TM0000	20:14:12:10:51:2b	3.4.2.R932	Ready	
AS7008T-00r01-ni	172.16.2.10	AS7008T	AS87654321TM3333	20:14:08:27:00:01	3.5.0.A9G1	Ready	
AS6202T-AAA	172.16.2.105	AS6202T	ASUSTORRDTEST	20:15:07:13:62:04	3.3.1.RIH2	Ready	
AS-604T-vivian	172.16.1.109	AS-604T	AT1207608MB0047	10:bf:48:89:c4:2e	3.5.0.A9R1	Ready	
AS-604T-C534	172.16.2.218	AS-604T	AT1207608MB00EA	10:bf:48:89:c5:33	3.4.3.B9K1	Ready	

- If the above mentioned procedures have not managed to solve your problem, please contact your local ASUSTOR dealer or [ASUSTOR Customer Service](#). You are also encouraged to browse through the [ASUSTOR Knowledgebase](#).