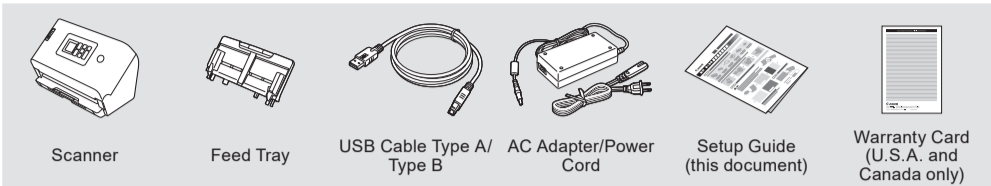


# DR-S250N Setup Guide

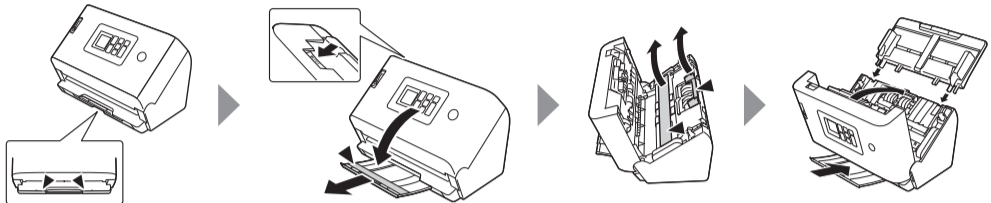
## STEP 1 Checking the Accessories

If any of the items listed below are missing or damaged, contact your local authorized Canon dealer or service representative.



- Items included in this manual are subject to change without notice.
- You must keep the machine's packaging and packing materials for storing or transporting the machine.
- The shape of the power plug varies by country and region.
- Setup Disc is not included.

Remove the scanner from the box, and remove the protective sheets (▼) from the scanner.

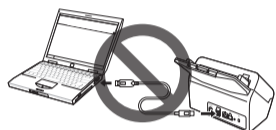


## STEP 2 Installing the Software

See Canon website for information on software updates.

### IMPORTANT

- Install the software before connecting the scanner to the computer.
- Log on to Windows as an Administrator.
- Close all other applications before installing the software.



### 1 Download the software.



<https://software.canon-elec.co.jp/ims/s200>

### 2 Execute the downloaded software and follow the on-screen instructions.

## Scanning

The machine has various scanning methods available to suit your purpose and environment. For details, refer to the "User Manual".

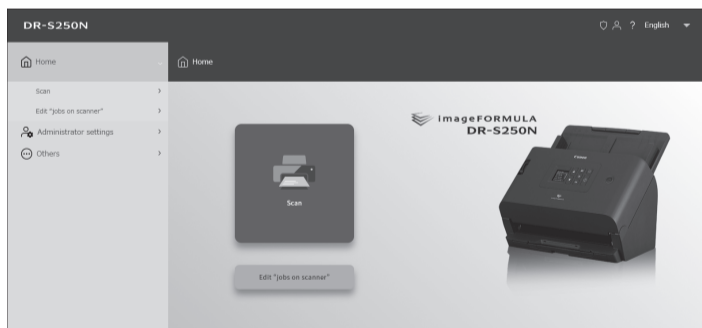
### Scanning with the CaptureOnTouch Lite Web function

You can scan just by connecting your computer or smart device to the same network as the scanner, without installing a driver or application.

#### Display on smart device

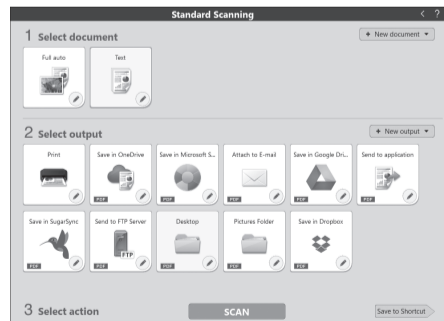


#### Display on computer



### Scanning with CaptureOnTouch

You can scan documents by just doing simple operations of selecting panels on the screen.



### Scanning with settings registered to the scanner

By registering scan settings (jobs) to the scanner in advance, you can access them from the operation panel and use them for scanning.

### Mopria certification (universal scanning)

You can scan easily from devices and OS (ChromeOS, Android, etc.) that support Mopria.

## Help

### User Manual

For detailed instructions about the scanner, refer to the user manual.

Windows : [Start] - [Canon DR-S200] - User Manual  
Mac : [Applications] - [DR-S250N User Manual]

### Web Menu Help

Click Web Menu ?

### CaptureOnTouch Help

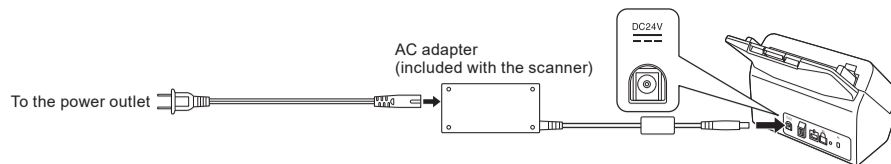
Windows : Click the CaptureOnTouch icon in the taskbar, and select [Help] from the menu.

Mac : Click [CaptureOnTouch Help] from the [Help] menu while the main screen of CaptureOnTouch is displayed

### Scanner Driver Help

Open the scanner driver from the application software, and then click the [Help] button.

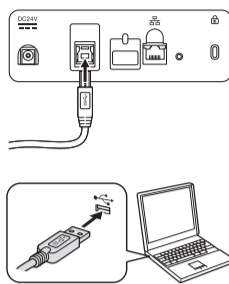
## STEP 3 Connecting the Power Cord



## STEP 4 Choosing How to Connect to a Computer

### Connecting via USB

Use the included USB cable to connect to the computer.

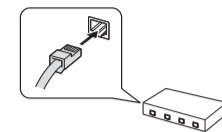


### Connecting via wired LAN

Connect the scanner to the same network as the computer.

#### IMPORTANT

- The computer needs to be connected to the router via Wi-Fi or wired LAN.
- The router and LAN cable are not included, and must be provided separately.

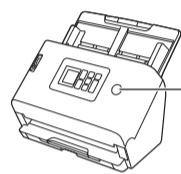


#### Hint

- The scanner supports DHCP (Dynamic Host Configuration Protocol). A DHCP server in the network environment provides IP addresses that can be automatically acquired, eliminating the need to specify an IP address for the scanner.
- If you must specify a fixed IP address for the scanner, such as when using it on a network without a DHCP server, you can specify a static IP address on the operation panel. For details, refer to the "User Manual".

## STEP 5 Turning the Power ON

The power button lights blue when the power turns ON.



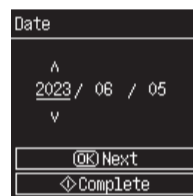
Power button

## STEP 6 Selecting the Language



Use the ▲▼ keys to select a language, and then confirm with the OK key.

## STEP 7 Setting the date and time



Use the ▲▼ keys to select values.

Press the OK key to confirm and move to the next item.

Press the Back key to return to the previous screen.

When you have finished the input, press the Start key.

### FCC REGULATIONS (For 120 V model)

Document Scanner, Model 6130270  
AC Adapter, Model 6G3-0267

**Note:** This equipment has been tested and found to comply with the limits for a Class B digital device, pursuant to Part 15 of the FCC Rules. These limits are designed to provide reasonable protection against harmful interference in a residential installation. This equipment generates, uses, and can radiate radio frequency energy and, if not installed and used in accordance with the instructions, may cause harmful interference to radio communications. However, there is no guarantee that interference will not occur in a particular installation. If this equipment does cause harmful interference to radio or television reception, which can be determined by turning the equipment OFF and ON, the user is encouraged to try to correct the interference by one or more of the following measures:

- Reorient or relocate the receiving antenna.
- Increase the separation between the equipment and receiver.
- Connect the equipment into an outlet on a circuit different from that to which the receiver is connected.
- Consult the dealer or an experienced radio/TV technician for help.

Use of shielded cable is required to comply with Class B limits in Subpart B of Part 15 of FCC Rules.

Do not make any changes or modifications to the equipment unless otherwise specified in the manual. If such changes or modifications should be made, you could be required to stop operation of the equipment.

Canon U.S.A. Inc.  
One Canon Park, Melville, NY 11747, U.S.A.  
Tel. No. (800)652-2666

### Model Names

The following name may be provided for the safety regulations in each sales region of the Document Scanner.  
DR-S250N: Model 6130270

### Copyright

Copyright 2023 by CANON ELECTRONICS INC. All rights reserved.  
No part of this publication may be reproduced or transmitted in any form or by any means, electronic or mechanical, including photocopying and recording, or by any information storage or retrieval system without the prior written permission of CANON ELECTRONICS INC.

### Disclaimers

The information in this document is subject to change without notice.

CANON ELECTRONICS INC. MAKES NO WARRANTY OF ANY KIND WITH REGARD TO THIS MATERIAL, EITHER EXPRESS OR IMPLIED, EXCEPT AS PROVIDED HEREIN, INCLUDING WITHOUT LIMITATION, THEREOF, WARRANTIES AS TO MARKETABILITY, MERCHANTABILITY, FITNESS FOR A PARTICULAR PURPOSE OF USE OR NON-INFRINGEMENT. CANON ELECTRONICS INC. SHALL NOT BE LIABLE FOR ANY DIRECT, INCIDENTAL, OR CONSEQUENTIAL DAMAGES OF ANY NATURE, OR LOSSES OR EXPENSES RESULTING FROM THE USE OF THIS MATERIAL.

CANON ELECTRONICS INC. IS NOT LIABLE FOR THE STORAGE AND HANDLING OF DOCUMENTS SCANNED WITH THIS PRODUCT, OR THE STORAGE AND HANDLING OF RESULTING SCANNED IMAGE DATA. IF YOU INTEND TO DISCARD THE ORIGINALS OF SCANNED DOCUMENTS, YOU THE CUSTOMER ARE RESPONSIBLE FOR INSPECTING THE SCANNED IMAGES AND VERIFYING THAT DATA IS INTACT. THE MAXIMUM LIABILITY OF CANON ELECTRONICS INC. UNDER THIS WARRANTY IS LIMITED TO THE PURCHASE PRICE OF THE PRODUCT COVERED BY THE WARRANTY.

### Trademarks

- Canon and the Canon logo are registered trademarks, of Canon Inc. in the United States and may also be trademarks or registered trademarks in other countries.
- imageFORMULA is a trademark of CANON ELECTRONICS INC.
- Microsoft, Windows, Microsoft Edge, and Microsoft Teams are registered trademarks or trademarks of Microsoft Corporation in the United States and other countries.
- Microsoft product screen shot(s) reprinted with permission from Microsoft Corporation.
- ENERGY STAR is a registered trademark of the United States Environmental Protection Agency.
- Mac, Mac OS, macOS and Safari are trademarks of Apple Inc. registered in the U.S. and other countries.
- Slack is a trademark or registered trademark of Slack Technologies, Inc. in the United States and other countries.
- iOS is a trademark or registered trademark of Cisco in the United States and other countries.
- Google Chrome, Chrome OS and Android are registered trademarks or trademarks of Google LLC.
- Mopria is a trademark or registered trademark of Mopria Alliance, Inc. in the United States and other countries. Unauthorized use is strictly prohibited.
- Firefox is a registered trademark of the Mozilla Foundation in the U.S. and other countries.
- ISIS is a registered trademark of Open Text in the United States.
- iDRS™ SDK 15 Windows 32 – 64 bit technology by Image Recognition Integrated Systems S.A. Copyright 1987 – 2019, I.R.I.S. S.A. All rights reserved.
- QR Code is a registered trademark of DENSO WAVE INCORPORATED in Japan and in other countries.
- Other product and company names herein may be the trademarks of their respective owners. However, the ™ and ® symbols are not used in this document.