

Quick Installation Guide

Range Extender

Setup with videos

Scan the QR code, or visit <https://www.tp-link.com/support/setup-video/#range-extenders> and search for the setup video of your model.

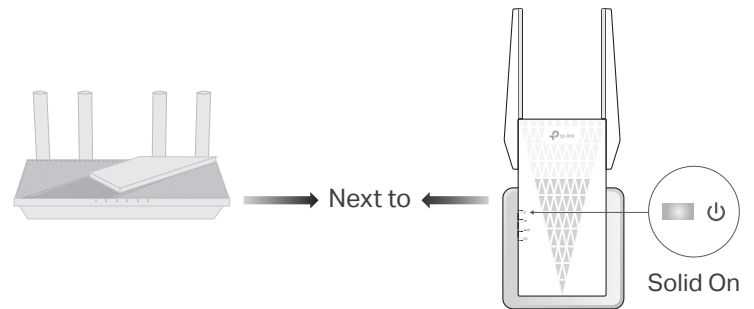


* Images may differ from your actual product.

1 Power On

Plug the extender into a power outlet **next to** your router. Wait until its Power LED turns solid on.

Note: For safety, only plug the extender in the direction as shown below.

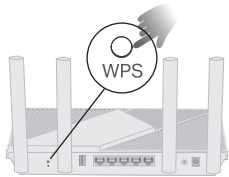


2 Set Up

Method 1: Via the WPS Button

1. Activate the WPS function on your router by pressing the WPS button.

Note: If you don't know how to do it, refer to your router's user manual, or you can use other methods to set it up.

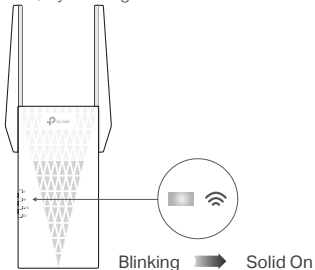


The WPS button might look like one of these:



2. Within 2 minutes, press the WPS button on the extender for 1 second, and the LED starts blinking. Wait for the LED, 2.4GHz LED and 5GHz LED to turn solid blue, indicating a successful connection.

Note: If only the 2.4GHz or 5GHz LED is solid blue, check to see if the router has both 2.4GHz and 5GHz turned on. If both are turned on, try WPS again or use other methods.



3. Done. You can connect to the extender's Wi-Fi.

Extended Network Names:
Router's network name with **_EXT** at the end
or
Same as your EasyMesh router (see back for EasyMesh details)
Passwords:
Same as your router

Method 2: Via the Tether App

1. Get the up-to-date Tether app from the Apple App Store or Google Play, or simply scan the QR code.



or



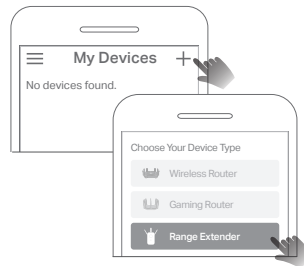
Scan for Tether

Tether

2. Launch the Tether app and log in with your TP-Link ID. If you don't have an account, create one first.

3. Tap the **+** button and select **Range Extender**.

Note: If you cannot find your device, please refer to FAQ > Q1.

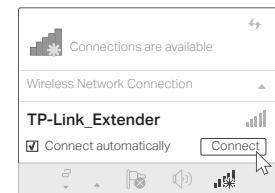


4. Follow app instructions to complete the setup. The LED should turn solid on, indicating successful connection to your router.

Note: If the LED does not turn solid on, please refer to FAQ > Q2.

Method 3: Via a Web Browser

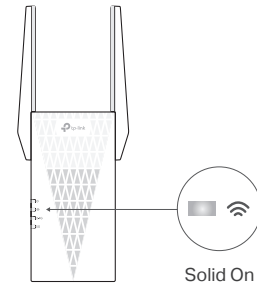
1. Connect your computer or smartphone to the extender's network **TP-Link_Extender**.



2. Visit <http://www.tplinkrepeater.net> or <http://192.168.0.254> in a web browser. Create a password to log in.



3. Follow web instructions to complete the setup.

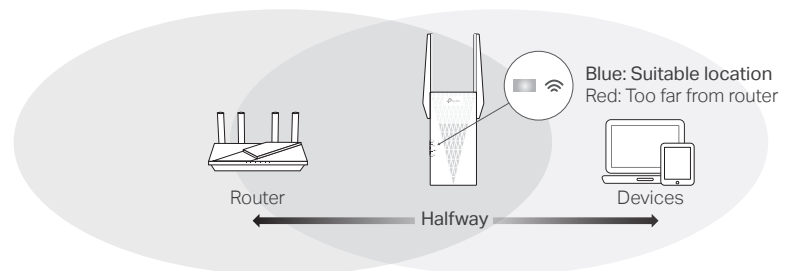


3 Relocate

1. Plug in the extender about **halfway** between your router and the Wi-Fi dead zone. The location you choose must be **within the range of your router**.

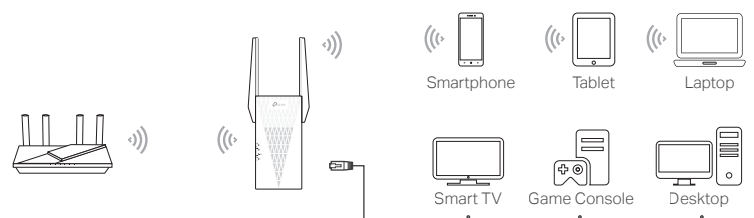
2. Wait for about 2 minutes until the LED turns **solid blue**. If it doesn't, **relocate the extender closer to the router** to achieve better signal quality.

Tip: To place the extender for optimal Wi-Fi performance, access extender settings via the Tether app and go to find **Location Assistant**, or simply scan the QR code to visit <https://www.tp-link.com/support/faq/3103/>.



Enjoy!

- Connect your devices to the extender wirelessly or via an Ethernet cable, then enjoy the internet. The password of your extended network is the same as your main router.
- You can also change the extender to **Access Point Mode** to transform your existing wired network to a wireless one. For details, see **Access Point Mode (AP Mode)** on the back page.



Access Extender Settings



After setup, you can access extender settings via any of the methods below. You can reselect the main network, change extended network settings, and more.

Note: If your extender and router use the same network name, Method 1 is recommended.

Method 1: Via the Tether App

1. Connect your smartphone to the extender's or router's network.
2. Launch the Tether app, select your extender, and log in.
3. View or change extender settings as needed.

LED Explanation

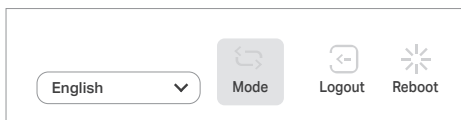
LED	Status	Indication (For Range Extender Mode)
 (Power)	On/Off	The extender is on or off.
	Blinking	The system is starting up or firmware upgrade is in progress.
 (Signal)	Solid blue	The extender is connected to your router's wireless network and is in a suitable location.
	Solid red	The extender is receiving a weak signal. Try relocating it closer to your router.
	Blinking Off	WPS connection is in progress. No wireless connection is established.
2.4GHz	On/Off	The extender is connected or not connected to the 2.4GHz wireless network of your router.
5GHz	On/Off	The extender is connected or not connected to the 5GHz wireless network of your router.

Access Point Mode (AP Mode)

Stable wireless performance and wired connection with a main router required. To change your extender to **Access Point Mode**, do the following:

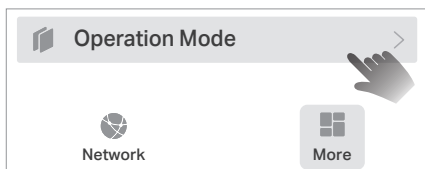
- a. By Web: Login → Find the **Mode** button on top.

For details, refer to the user guide at <https://www.tp-link.com/support>.



- b. By Tether: Login to your extender → Find the **Operation Mode**

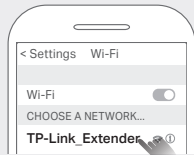
Note: Due to Tether app updates, images may differ from your actual interface.



FAQ (Frequently Asked Questions)

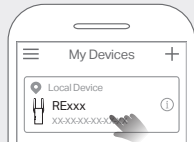
Q1. What should I do if the Tether app cannot find my device during setup?

- Try another method by following the steps below:
 1. Connect your smartphone to the extender's network TP-Link_Extender.



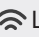
2. Launch the Tether app, and select your extender.

Tip: If you have connected to the extender's Wi-Fi but still cannot find your device, try turning off your cellular data.



3. Follow app instructions to complete the setup.

If you are still having problems, contact our technical support.

Q2. What should I do if the  LED doesn't turn solid on after completing setup via the Tether app or web browser?

- You may have entered incorrect Wi-Fi password for your main router during the configuration. Check the password and try again.
- Make sure the extender is close to your router, preferably within 16 feet, and away from large electrical appliances.
- If you have enabled wireless MAC filtering, wireless access control, or access control list (ACL) on your router, disable them first, then follow any method on the front page to complete the configuration.
- Try setting it up via the WPS button.
- Reset the extender and go through the configuration again.

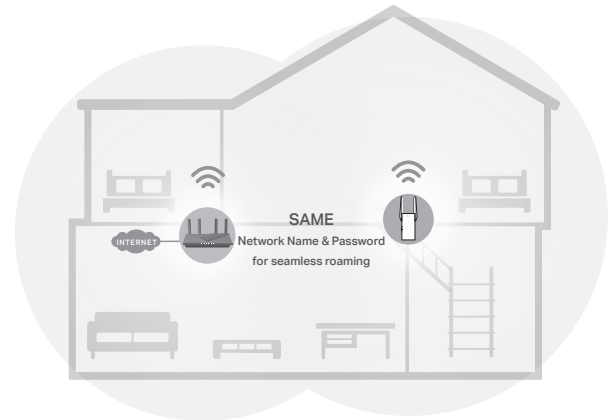
If you are still having problems, contact our technical support.

Method 2: Via a Web Browser

1. Connect your computer or smartphone to the extender's network. If you are using a computer, unplug the Ethernet cable if any.
2. Launch a web browser, enter <http://www.tp-linkrepeater.net> in the address bar, and log in.
3. View or change extender settings as needed.

EasyMesh-Compatible

You can experience strong, stable, and seamless wireless connections throughout your home with EasyMesh, a whole home mesh standard that works across different access points for ultimate flexibility.



• Seamless Roaming

Connects mobile devices to your routers or extenders that provide the best coverage. Devices compatible with EasyMesh also share a single Wi-Fi name so you stay connected in every room.

• One-Click Settings

Within 2 minutes, press the WPS button on the main router and the extender, then the EasyMesh network is all set up. TP-Link extenders in factory settings can be connected to form an EasyMesh network directly without any redundant setup.

• Flexible Scalability

Flexibly scale your home networking with different vendors,* different topologies, different Protocols and different product categories.

*TP-Link EasyMesh-compatible products can network with other devices that use EasyMesh. Failed connections may be due to firmware conflicts of different vendors. The EasyMesh-Compatible function is still being developed on some models and will be supported in subsequent software updates. This product is compatible with standardized EasyMesh technology but has not obtained the Wi-Fi EasyMesh™ certification.



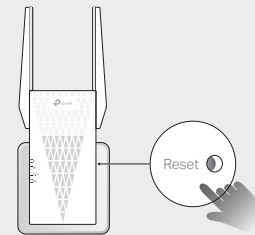
For more information, visit


<https://www.tp-link.com/easymesh/>.

Scan for Setup Video

Q3. How do I reset the extender?

- With the extender powered on, use a pin to press the **Reset** button for 1 second. The extender will reboot.



 If you need more setup help, please visit <https://www.tp-link.com/support/faq/3074/>, or simply scan the QR code.





Safety Information

- Keep the device away from water, fire, humidity or hot environments.
 - Do not attempt to disassemble, repair, or modify the device. If you need service, please contact us.
 - Do not use the device where wireless devices are not allowed.
- Please read and follow the above safety information when operating the device. We cannot guarantee that no accidents or damage will occur due to improper use of the device. Please use this product with care and operate at your own risk.

TP-Link hereby declares that the device is in compliance with the essential requirements and other relevant provisions of directives 2014/53/EU, 2009/125/EC, 2011/65/EU and (EU) 2015/863. The original EU Declaration of Conformity may be found at <https://www.tp-link.com/en/support/ce>

TP-Link hereby declares that the device is in compliance with the essential requirements and other relevant provisions of the Radio Equipment Regulations 2017. The original UK Declaration of Conformity may be found at <https://www.tp-link.com/support/ukca>

 To communicate with TP-Link users or engineers, please join the TP-Link Community at <https://community.tp-link.com>.

 For technical support, replacement services, user manuals and other information, please visit <https://www.tp-link.com/support>, or simply scan the QR code.

