

**ScanSnap**  
*iX1300*

Getting Started  
Instructions préliminaires  
Los Geht´s  
Avvio rapido  
Comenzando  
Руководство по началу работы  
Instruções básicas  
시작 안내서  
入門指南

[For users in North America, refer here.](#)

[Pour les utilisateurs aux États-Unis, cliquez ici.](#)

[Benutzer in Nordamerika finden hier Informationen.](#)

[Per gli utenti in Nord America, fare riferimento qui.](#)

[Para usuarios de Norteamérica, consultar aquí.](#)

[Для пользователей в Северной Америке см. здесь.](#)

[Para usuários na América do Norte, consulte aqui.](#)

[북미지역의 사용자는 여기를 참조해 주십시오.](#)

[北美地區的使用者，請參閱此處。](#)

[For users in regions other than North America, refer here.](#)

[Pour les utilisateurs dans d'autres pays que les États-Unis, cliquez ici.](#)

[Benutzer in anderen Regionen als Nordamerika finden hier Informationen.](#)

[Per gli utenti in aree diverse dal Nord America, fare riferimento qui.](#)

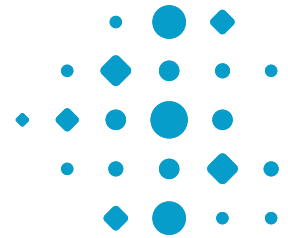
[Para los usuarios de otras regiones fuera de Norteamérica, consultar aquí.](#)

[Для пользователей в регионах, отличных от Северной Америки, см. здесь.](#)

[Para usuários em regiões diferentes da América do Norte, consulte aqui.](#)

[북미지역 이외의 사용자는 여기를 참조해 주십시오.](#)

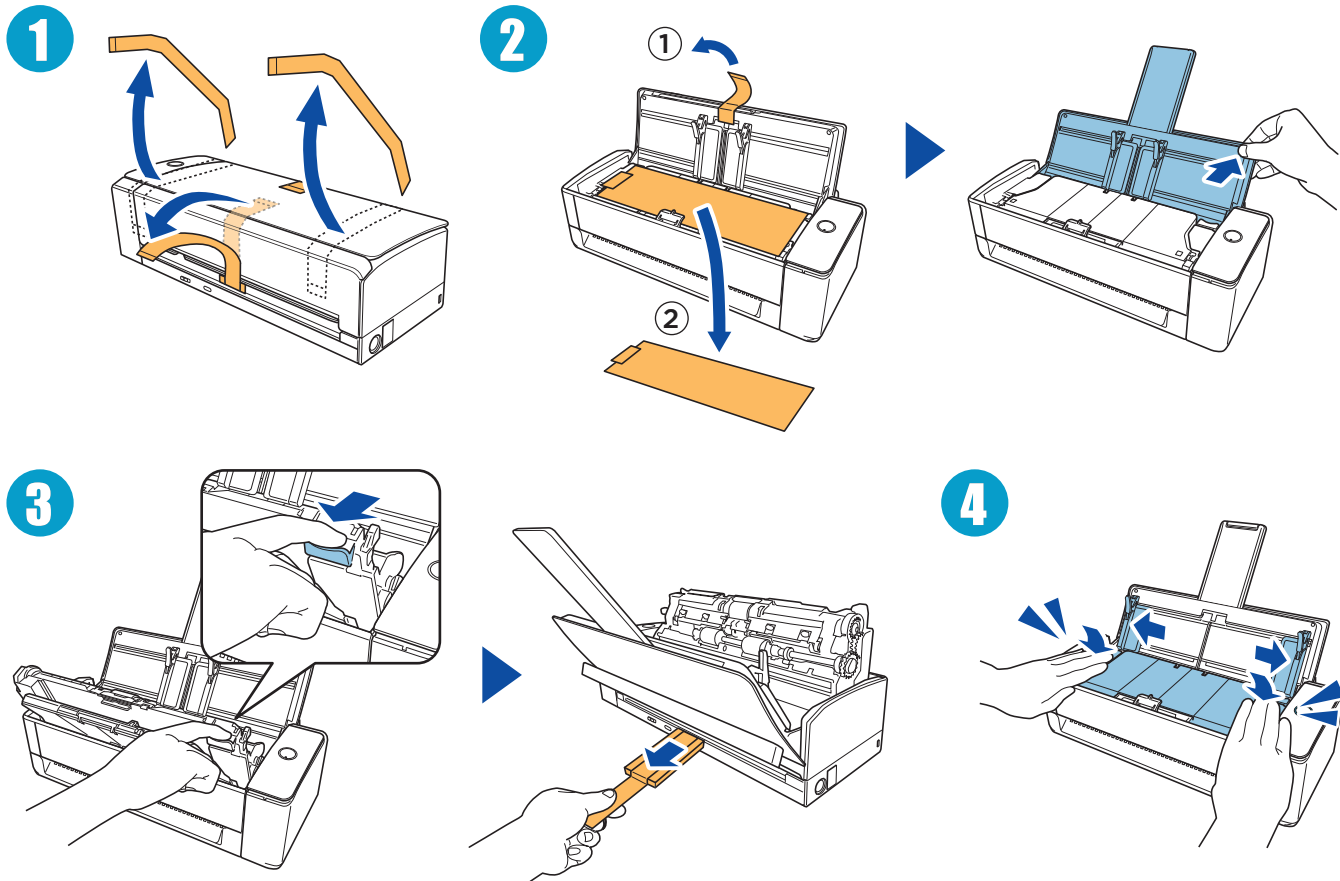
[北美以外地區的使用者，請參閱此處。](#)



**ScanSnap**  
iX1300

## Getting Started Instructions préliminaires

1



2



<https://scansnap.com/d/>

Windows/Mac

**ScanSnap Home**

Saves images on a computer.  
Enr. images sur ordinateur.



Smart Device/Chromebook

**ScanSnap Connect Application**

Saves images on a device.  
Enr. images sur appareil.



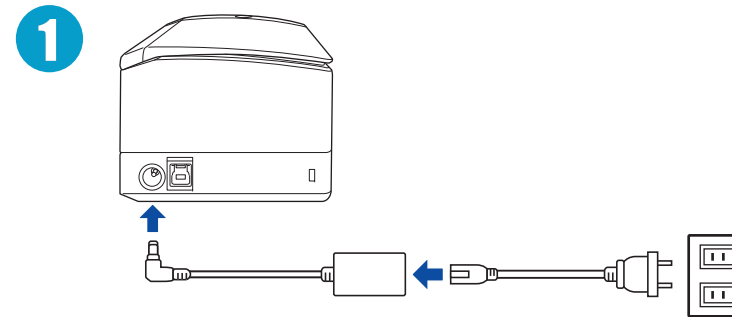
Smart Device

**ScanSnap Cloud**

Saves images in a cloud.  
Enr. images sur le cloud.



3



- 2 Follow the setup steps in the window that appears in the software used. If the setup window is not displayed, refer to the relevant software manual to connect the ScanSnap.  
Suivez les étapes de configuration de la fenêtre du logiciel utilisé. Si la fenêtre de configuration n'apparaît pas, reportez-vous au manuel du logiciel correspondant pour connecter le ScanSnap.

Windows/Mac

**ScanSnap Home**



Smart Device/Chromebook

**ScanSnap Connect Application**

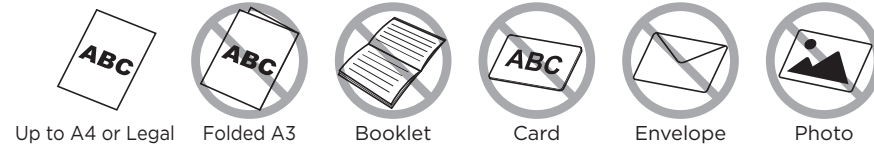


Smart Device

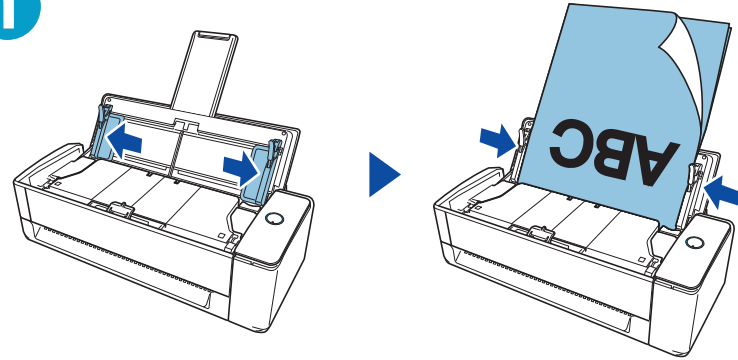
**ScanSnap Cloud**



## U-turn Scan

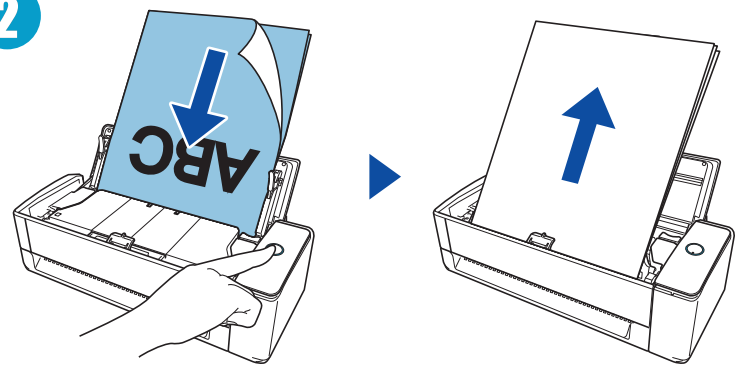


1



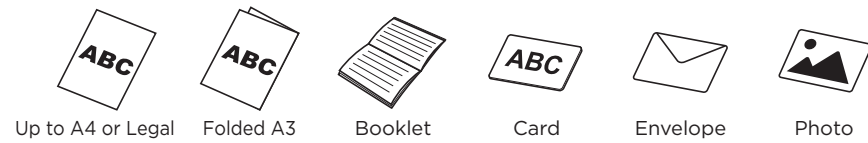
Load a document.  
Chargez un document.

2

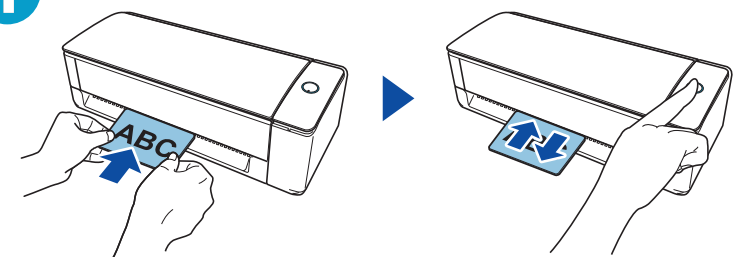


Press the button.  
Appuyez sur la touche.

## Return Scan

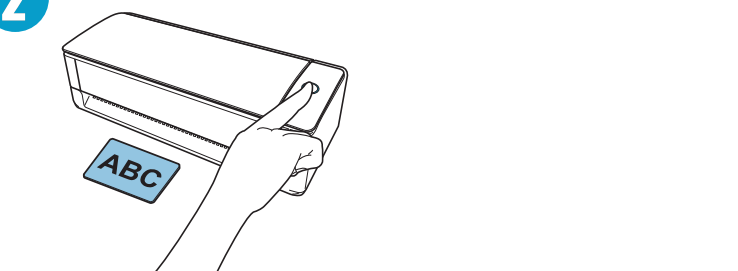


1



Insert a document and press the button.  
Insérez doc et app sur touche.

2

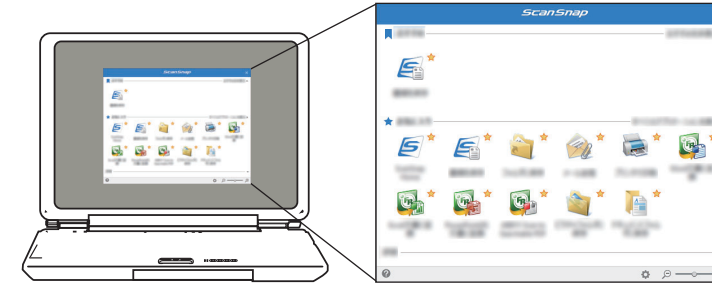


Press the button to finish the scan.  
App sur touche pr finir num.

3

## Windows/Mac

### ScanSnap Home

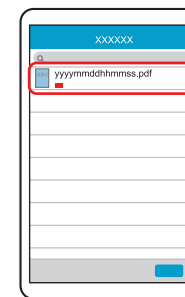


Select an icon, such as a save destination, from the Quick Menu.

Sélectionnez une icône, par exemple une destination d'enregistrement, dans le Quick Menu.

### Smart Device/Chromebook

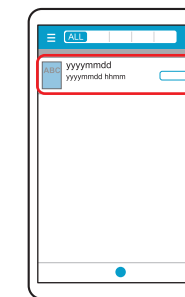
#### ScanSnap Connect Application



An image is saved to the device.  
Une image est enregistrée sur l'appareil.

### Smart Device

#### ScanSnap Cloud



An image saved in a cloud is displayed.  
Imag enr. ds cloud s'affiche.

For details about the setup procedure when you use ScanSnap Home and ScanSnap Manager, refer to the URL.  
Pour en savoir plus sur la procédure de configuration lorsque vous utilisez ScanSnap Home et ScanSnap Manager, consultez l'URL.



<https://scansnap.com/gs/>

For further information, refer to the manuals or ScanSnap Support Site.  
Pour plus d'informations, veuillez consulter les guides fournis ou le Site d'assistance de ScanSnap.



<https://scansnap.fujitsu.com/g-support/en/>

The full text of the FCC of conformity is available at the following internet address:  
<http://scansnap.fujitsu.com/r/cert/>

Le texte complet de la FCC de conformité est disponible à l'adresse internet suivante:  
<http://scansnap.fujitsu.com/r/cert/>



## Getting Started

Instructions préliminaires

Los Geht's

Avvio rapido

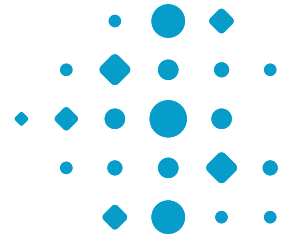
Comenzando

Руководство по началу работы

Instruções básicas

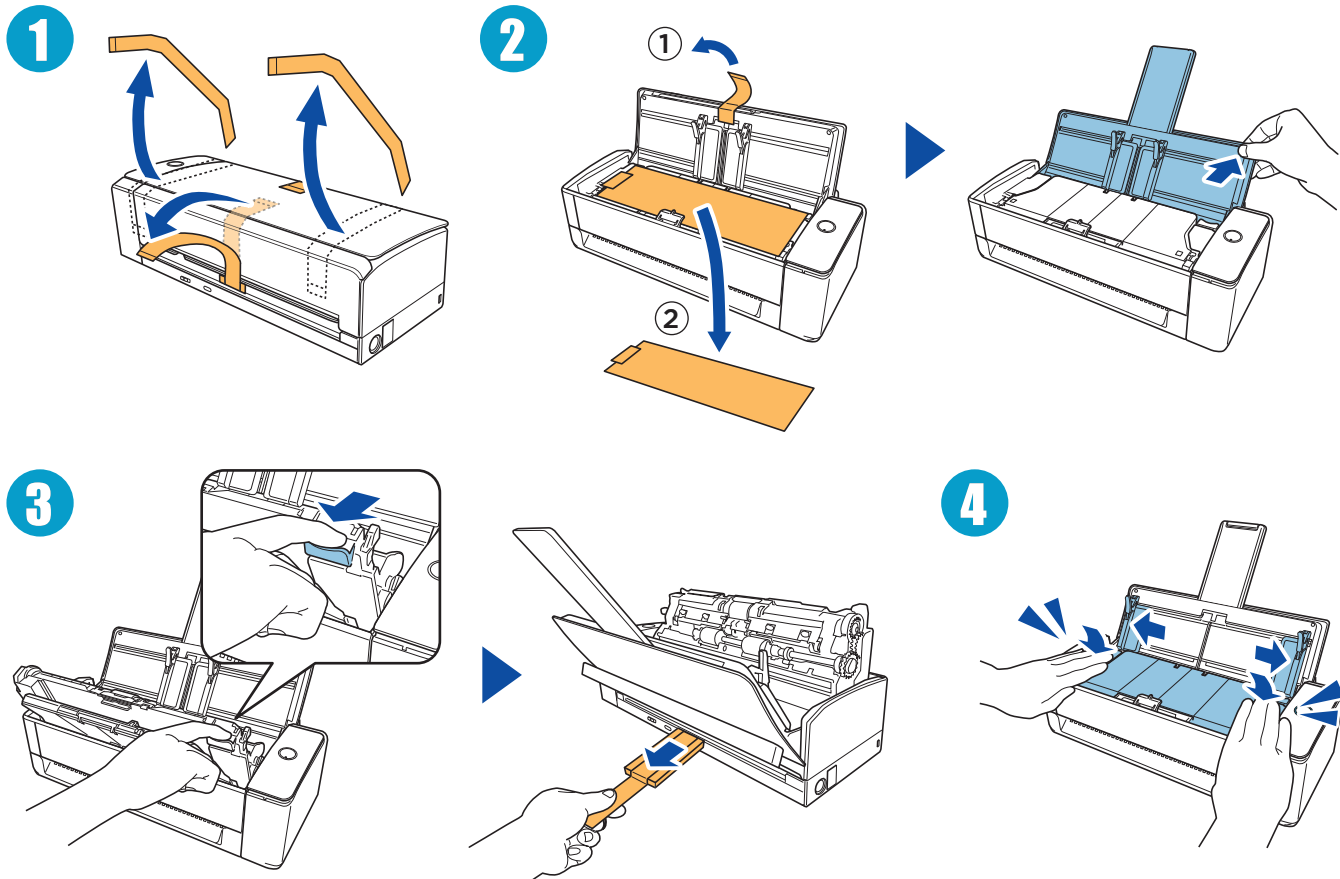
시작 안내서

入門指南



**ScanSnap**  
iX1300

1



2


<https://scansnap.com/d/>

## Windows/Mac



Saves images on a computer.  
Enr. images sur ordinateur.  
Bilder a. Computer speichern  
Salva immagini su computer.  
Guardar imágenes en un PC.  
Сохр. изображ. на компьют.  
Salva imagens no computador.  
이미지를 컴퓨터에 저장합니다.  
會將影像儲存至電腦。

## Smart Device/Chromebook



Saves images on a device.  
Enr. images sur appareil.  
Bilder auf Gerät speichern  
Salva immagini su dispos.  
Guardar imágenes en disposi.  
Сохр. изображ. на устр-ве.  
Salva imgs. no dispositivo.  
이미지를 장치에 저장합니다.  
會將影像儲存至裝置。

## Smart Device

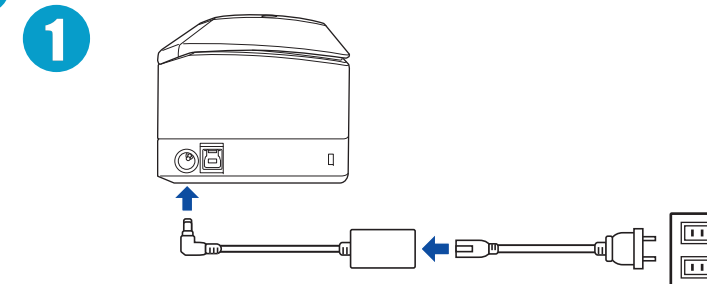


Saves images in a cloud.  
Enr. images sur le cloud.  
Bilder in d. Cloud speichern  
Salva immagini in cloud.  
Guardar imágenes en la nube.  
Сохр. изображ. в облаке.  
Salva imagens em uma nuvem.  
이미지를 클라우드에 저장합니다.  
會將影像儲存至雲端。

[\*] For regions where the ScanSnap Cloud service is available, refer to the URL.  
Pour les régions où le service ScanSnap Cloud est disponible, reportez-vous à l'URL.  
Beachten Sie für Regionen, in denen der ScanSnap Cloud-Dienst verfügbar ist, die URL.  
Per le regioni in cui è disponibile il servizio ScanSnap Cloud, fare riferimento all'URL.  
En las regiones donde esté disponible el servicio ScanSnap Cloud, consulte el URL.  
Для регионов, где доступна служба ScanSnap Cloud, см. следующую URL-ссылку.  
Para regiões onde o serviço ScanSnap Cloud está disponível, consulte o URL.  
ScanSnap Cloud 서비스가 이용 가능한 지역에 관해서는 URL 을 참조해 주십시오.  
關於 ScanSnap Cloud 服務的提供地區，請參閱網站。


<https://scansnap.fujitsu.com/global/scansnap-cloud/country.html>

3



2 Follow the setup steps in the window that appears in the software used. If the setup window is not displayed, refer to the relevant software manual to connect the ScanSnap.

Suivez les étapes de configuration de la fenêtre du logiciel utilisé. Si la fenêtre de configuration n'apparaît pas, reportez-vous au manuel du logiciel correspondant pour connecter le ScanSnap.

Befolgen Sie die Schritte in dem Fenster, das in der Software angezeigt wird. Beachten Sie die entsprechende Software-Anleitung, um den ScanSnap zu verbinden, wenn das Einrichtungsfenster nicht angezeigt wird.

Seguire la procedura nella finestra visualizzata nel software usato. Se la finestra di configurazione non è visualizzata, fare riferimento al manuale del software rilevante per collegare ScanSnap.

Siga los pasos de instalación en la ventana del software utilizado. Si no se muestra la ventana de configuración, consulte el manual de software correspondiente para conectarse al ScanSnap.

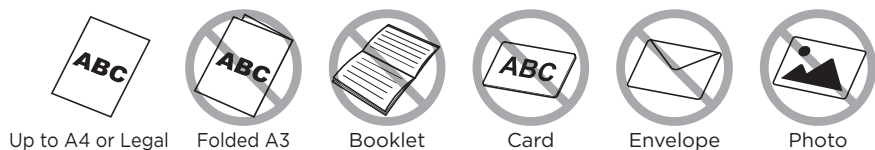
Следуйте шагам установки в окне используемого ПО. Если окно настройки не отображается, смотрите соответствующее руководство по программному обеспечению для подключения ScanSnap.

Siga as etapas de configuração na janela que aparece no software usado. Se a janela de configuração não for exibida, consulte o manual do software relevante para conectar o ScanSnap.

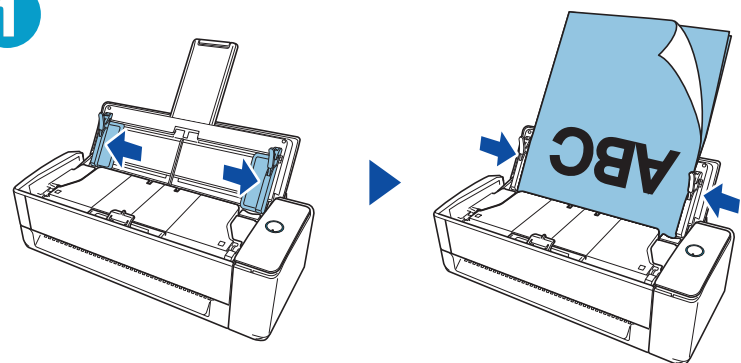
사용할 소프트웨어에 표시된 화면 지시에 따라 셋업을 진행합니다. 셋업 창이 표시되지 않는 경우 각 소프트웨어의 매뉴얼을 참조하여 ScanSnap에 연결해 주십시오.

請遵照使用軟體的顯示視窗中的設定步驟。若未顯示設定視窗，請參閱相關軟體的手冊來連接 ScanSnap。

## U-turn Scan

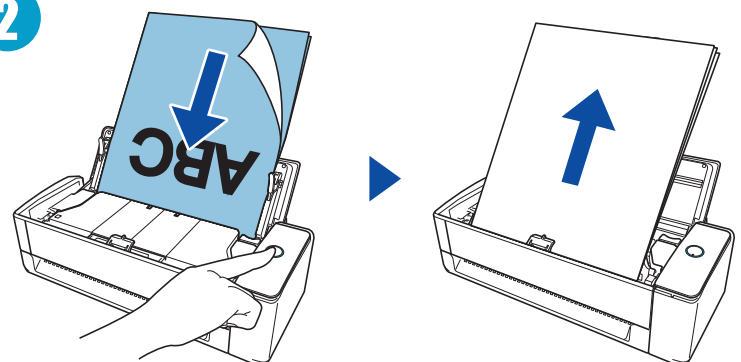


1



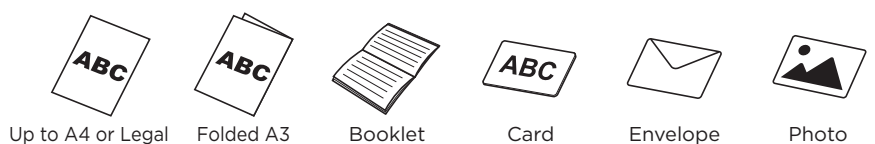
Load a document.  
Chargez un document.  
Legen Sie ein Dokument ein.  
Caricare un documento.  
Cargue un documento.  
Загрузите документ.  
Carregue um documento.  
문서를 올려놓으십시오.  
載入文件。

2

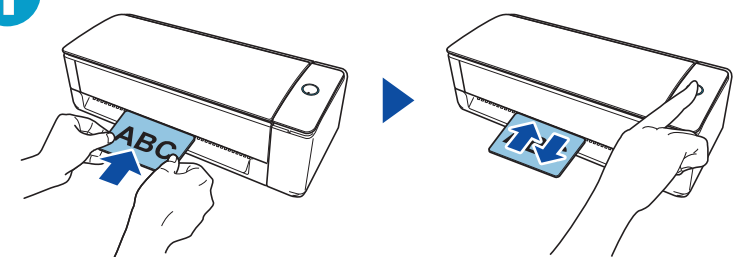


Press the button.  
Appuyez sur la touche.  
Drücken Sie die Taste.  
Premere il tasto.  
Pulse el botón.  
Нажмите кнопку.  
Pressione o botão.  
버튼을 누르십시오.  
按下按鈕。

## Return Scan

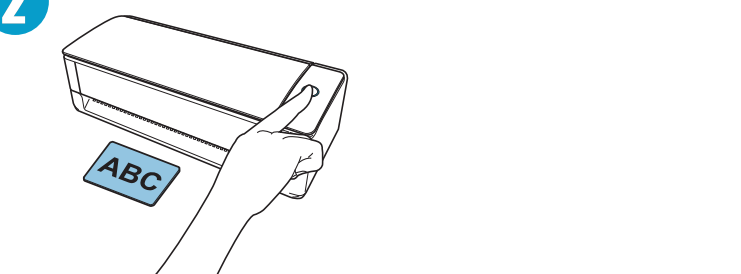


1



Insert a document and press the button.  
Insérez doc et app sur touche.  
Dok. einlegen, Taste drücken.  
Inserire doc. e premere tasto.  
Inserte un documento y pulse el botón.  
Вставьте док. и нажм. кнопку.  
Insira doc. e pressione botão.  
문서를 삽입하고 버튼을 누르십시오.  
插入文件並按下按鈕。

2

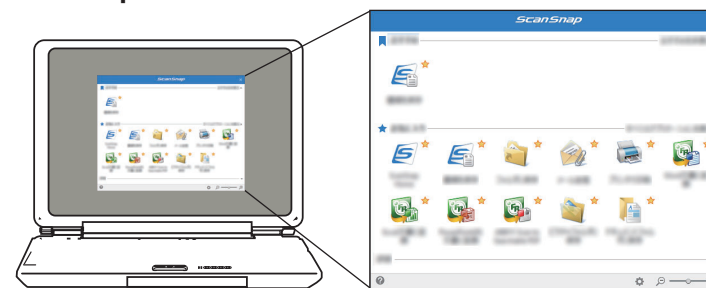


Press the button to finish the scan.  
App sur touche pr finir num.  
Zum Abschluss Taste drücken.  
Pr. tasto per term. scansione.  
Pulse el botón para terminar.  
Нажм. кнопку для заверш. скан.  
Pres. botão p/terminar digit.  
버튼을 눌러 스캔을 완료합니다.  
按下按鈕以完成掃描。

3

## Windows/Mac

### ScanSnap Home



Select an icon, such as a save destination, from the Quick Menu.

Sélectionnez une icône, par exemple une destination d'enregistrement, dans le Quick Menu.

Wählen Sie im Quick-Menü ein Symbol aus, wie den Zielordner.

Selezionare un'icona, come una destinazione di salvataggio, da Accesso rapido.

Seleccione un ícono, como una ubicación de destino, desde el Menú rápido.

Выберите значок, например место назначения сохранения, в пункте Быстрое Меню.

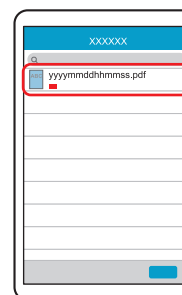
Selecione um ícone, como o destino da gravação, a partir do Quick Menu.

퀵 메뉴에서 저장 대상과 같은 아이콘을 선택합니다.

由快捷功能表選擇儲存目的地等圖示。

### Smart Device/Chromebook

#### ScanSnap Connect Application



An image is saved to the device.

Une image est enregistrée sur l'appareil.

Ein Bild wird auf dem Gerät gespeichert.

Un'immagine viene salvata sul dispositivo.

La imagen se guarda en el dispositivo.

Изображение сохранено на устройстве.

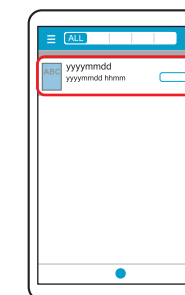
Uma imagem é salva no dispositivo.

이미지가 장치에 저장됩니다.

影像將儲存至裝置。

### Smart Device

#### ScanSnap Cloud



An image saved in a cloud is displayed.

Imag enr. ds cloud s'affiche.

Anzeige in Cloud gesp. Bild.

Imm. salvata in cloud visual.

Muestra la imagen en la nube.

Отобраз. изображ. из облака.

Img. salva na nuvem é exib.

클라우드에 저장된 이미지가 표시됩니다.

將會顯示儲存至雲端的影像。

For details about the setup procedure when you use ScanSnap Home and ScanSnap Manager, refer to the URL.

Pour en savoir plus sur la procédure de configuration lorsque vous utilisez ScanSnap Home et ScanSnap Manager, consultez l'URL.

Nähere Informationen zum Konfigurationsvorgang bei der Verwendung von ScanSnap Home und ScanSnap Manager finden Sie unter der URL.

Per dettagli sulla procedura di configurazione quando si usa ScanSnap Home e ScanSnap Manager, fare riferimento all'URL.

Para obtener detalles sobre el procedimiento para usar ScanSnap Home y ScanSnap Manager, consulte la URL.

Дополнительную информацию о процедуре настройки при использовании ScanSnap Home и ScanSnap Manager смотрите по URL-адресу.

Para detalhes sobre o procedimento de configuração quando usa o ScanSnap Home e o ScanSnap Manager, consulte o URL.

ScanSnap Home 및 ScanSnap Manager 사용 시 설정 절차에 대한 자세한 내용은 URL을 참조해 주십시오.

關於使用 ScanSnap Home 及 ScanSnap Manager 時的設定程序詳情，請參閱網址。



<https://scansnap.com/g/>

For further information, refer to the manuals or ScanSnap Support Site.

Pour plus d'informations, veuillez consulter les guides fournis ou le Site d'assistance de ScanSnap.

Weitere Informationen finden Sie in den mitgelieferten Bedienungsanleitungen oder auf der ScanSnap Support Site.

Per ulteriori informazioni, consultare le guide o il sito di supporto di ScanSnap.

Para obtener más información, consulte los manuales o el sitio de soporte de ScanSnap.

Для получения дополнительной информации, смотрите руководства или сайт поддержки ScanSnap.

Para mais informações, consulte os manuais ou o Site de suporte do ScanSnap.

보다 자세한 내용은 첨부 매뉴얼 또는 ScanSnap 지원 사이트를 참조해 주십시오.

如需詳細資訊，請參閱手冊或 ScanSnap 支援網站。



<https://scansnap.fujitsu.com/g-support/en/>

The full text of the FCC of conformity is available at the following internet address:

<http://scansnap.fujitsu.com/r/cert/>

Le texte complet de la FCC de conformité est disponible à l'adresse internet suivante:

<http://scansnap.fujitsu.com/r/cert/>