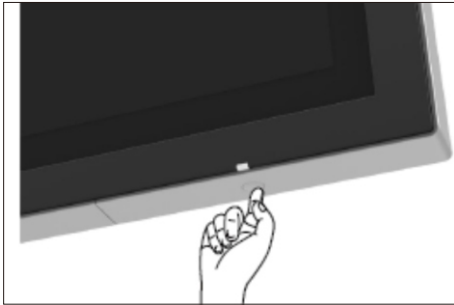
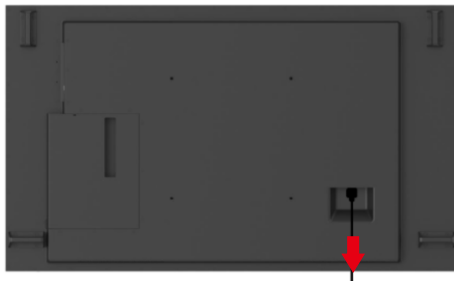


1. Disassembly Procedures:

S1 Turn off power..



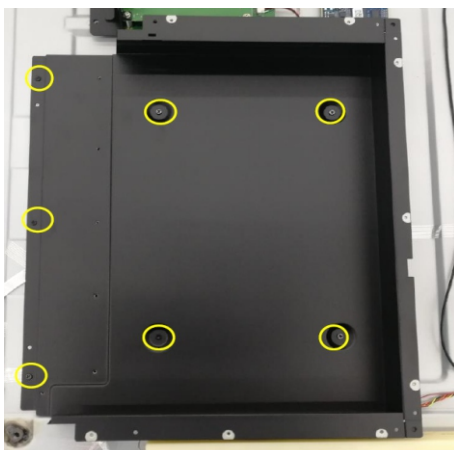
S2 Unplug external cables(power cable and video cable) from the monitor.



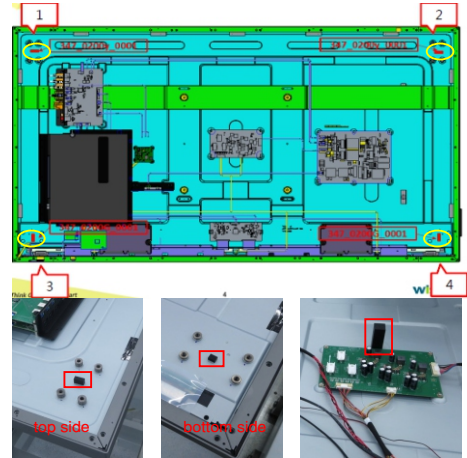
S3 Use a screwdriver to remove 8pcs screws for releasing the handles. (Torque:15±0.5kgf).
Remove 60pcs screws for unlocking the rear cover(Torque: 3±0.3kgf).



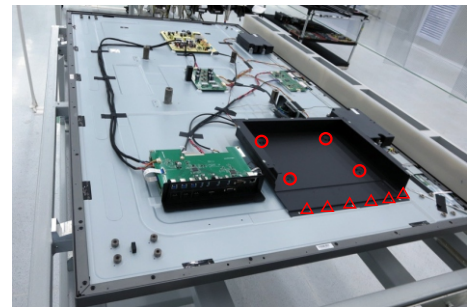
S4 Remove the handles and rear cover, then use a screwdriver to remove 7pcs screws for releasing the PC box.(Torque: 4.5±0.3kgf)



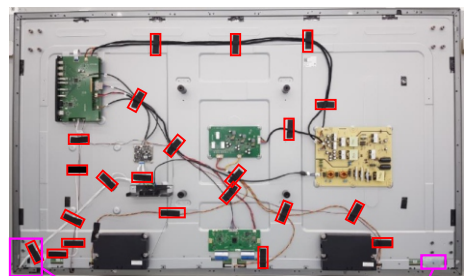
S5 Remove the handles and rear cover, then remove the 5pcs rubbers as the picture below shown.



S6 Use a screwdriver to remove 10pcs(4+6) screws for releasing the PC box.(Torque:3±0.3kgf)

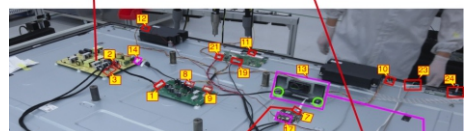
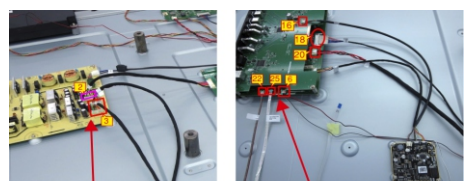


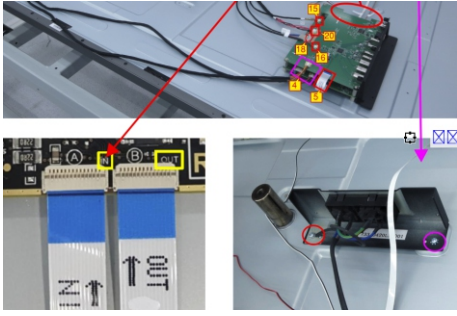
S7 Remove 2pcs O/C mylar tapes away from the back bracket, then remove 22pcs black tapes and 1pcs conductive tape as the picture below shown.



Disconnect all the cables as the picture below shown.

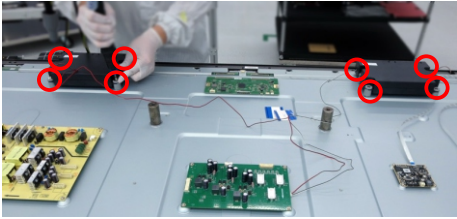
S8 Use a screwdriver to remove 2pcs screws for unlocking AC power outlet.(Torque: 4.5±0.5kgf)





S9

Use a screwdriver to remove 8pcs screws for unlocking speakers. (Torque: $6\text{kgf}\pm 0.5$)

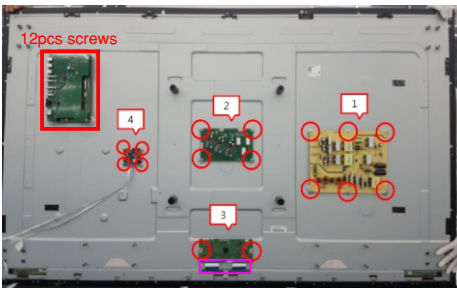
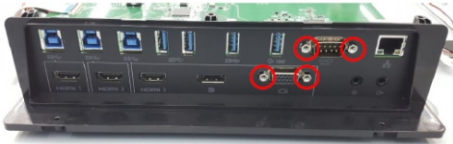


Use a Hex-head screwdriver to remove 4pcs screws for unlocking VGA connectors. (Torque: $4.5\text{kgf}\pm 0.3$)

S10

Use a screwdriver to remove 12pcs screws for unlocking the USB board, IO holder and main board, remove 16pcs screws for locking the power board, driver board, touch board and T-Con board. (Torque: $4.5\text{kgf}\pm 0.3$)

Disconnect the FFC cables away from the T-con board.



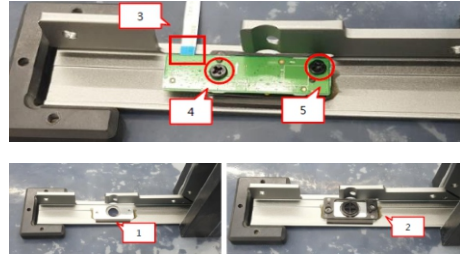
S11

Use a screwdriver to remove 42pcs screws (left: 11pcs, right: 11pcs, top: 10pcs, bottom: 10pcs) for unlocking 4pcs strips. (Torque: $6\pm 0.3\text{kgf}$)



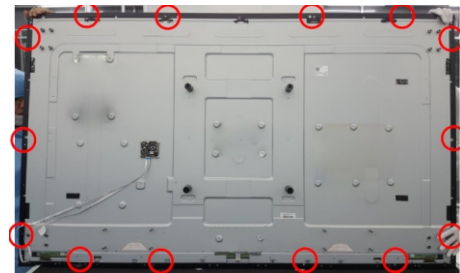
S12

Use a screwdriver to remove 2pcs screws for unlocking the key board and the holder with strip. (Torque: $2\pm 0.3\text{kgf}$)



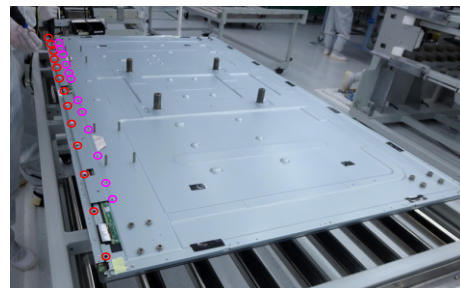
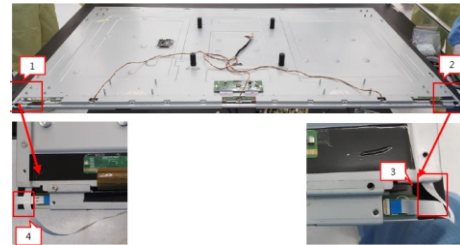
S13

Use a screwdriver to remove 14pcs screws for unlocking the front bezels(top, left, right, bottom). (Torque: $3\pm 0.3\text{kgf}$)



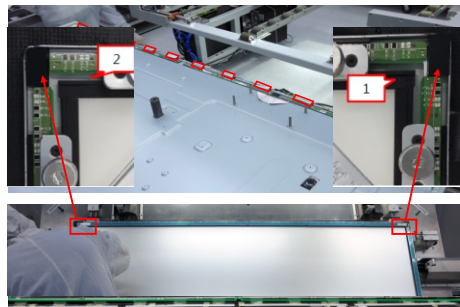
S14

Disconnect the touch cable and FFC cables. Use a screwdriver to remove 13pcs screws (Torque: $6\pm 0.3\text{kgf}$), 12pcs screws (Torque: $3\pm 0.3\text{kgf}$) for unlocking the ED holder with the assembled unit.



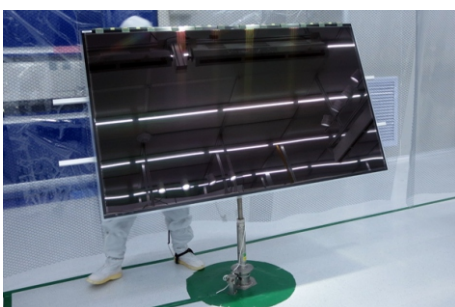
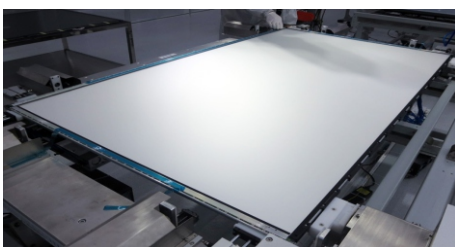
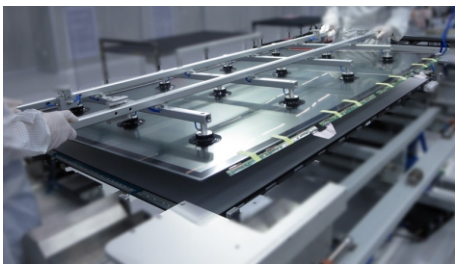
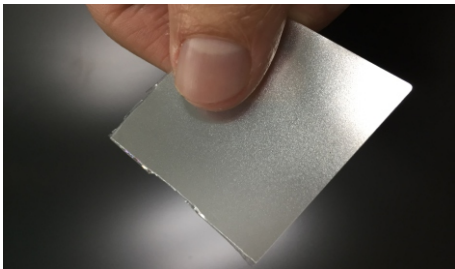
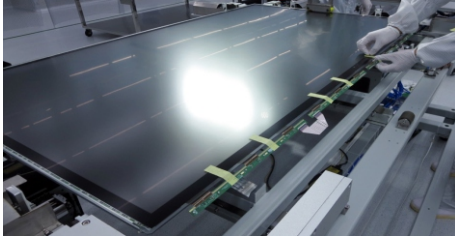
S15

Tear off 12pcs conductive foams on the specific position of the O/C SB, then release the O/C SB away from the back bracket.



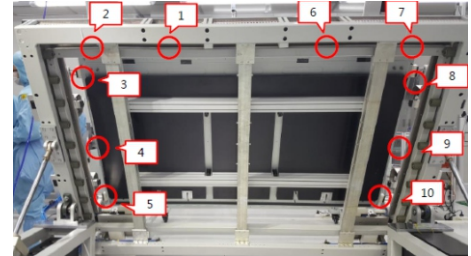
S16

Turn over the panel module with the bracket for screen faced up. Use a thin film (such as Prism film) to disassemble the O/C with glass carefully, then remove the O/C with glass and put them on a protective cushion.



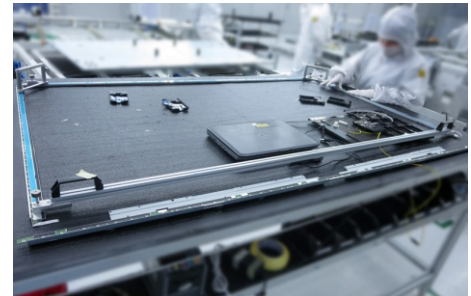
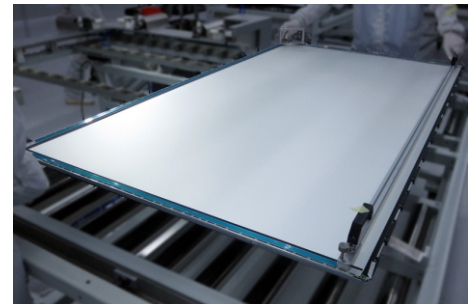
S17

Use a tripper to lift up the unit, then use a screwdriver to remove 10 pcs screws for unlocking the ED unit, then use the tripper to put down the unit. (Torque: $3.0 \pm 0.3 \text{kgf}$)



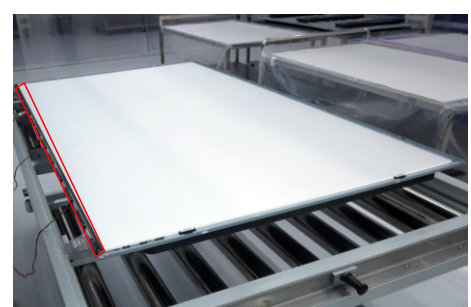
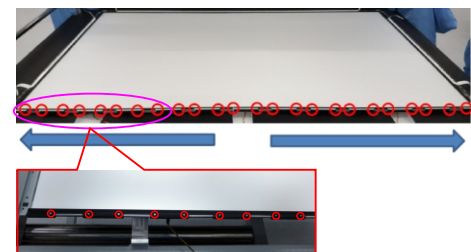
S18

Use an ED holder fixture to fix the ED holders, then lift up the ED holder unit for removing the ED unit, and then put the unit on a protective cushion.



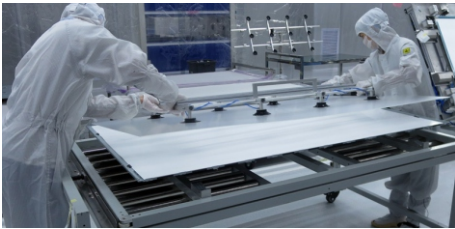
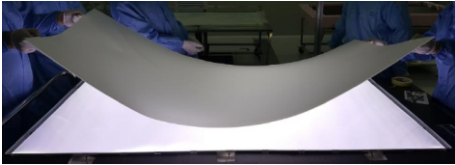
S19

Use a screwdriver to remove 24 pcs screws for unlocking the bottom-middle bezel and then remove the bottom-middle bezel. (Torque: $2 \pm 0.3 \text{kgf}$)



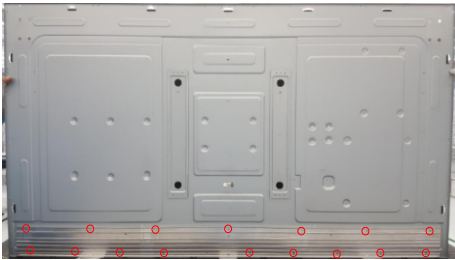
S20

Remove 1pcs DEBF film, 1pcs Diffuser film, 1pcs LGP, 1pcs Reflector film away from the back bracket.



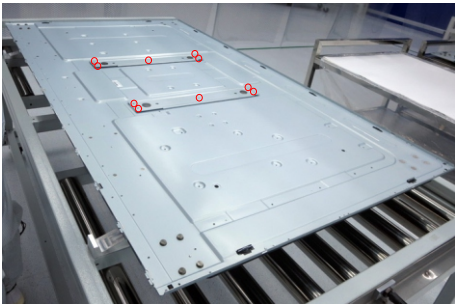
S21

Use a screwdriver to remove 17pcs screws for unlocking the L/B heat sink with the back bracket.
(Torque: $3\pm 0.3\text{kgf}$)



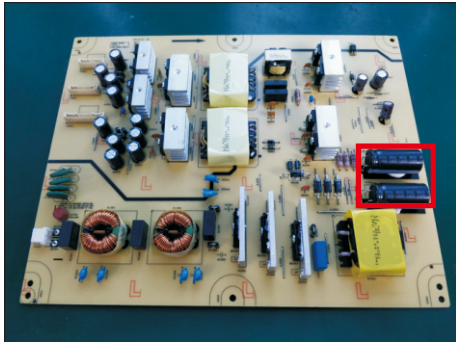
S22

Use a screwdriver to remove 10pcs screws for unlocking the two VESA brackets with back bracket. (Torque: $5\pm 0.3\text{kgf}$)

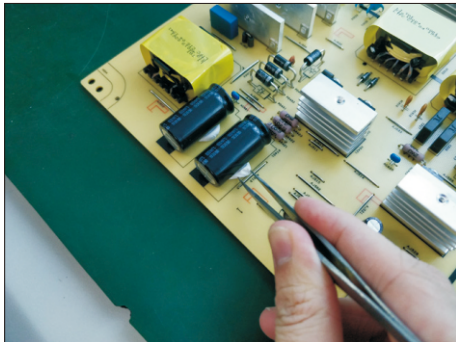


S23

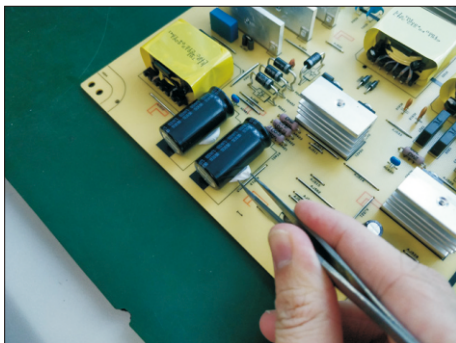
Remove electrolyte capacitors (red mark) from printed circuit boards.



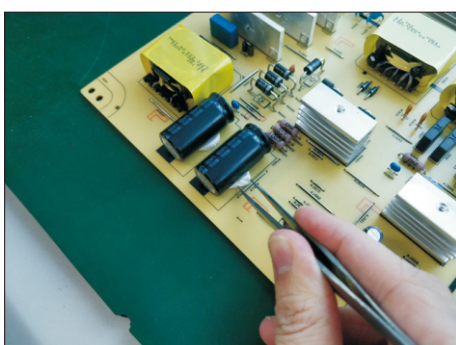
S23-1 Cut the glue between bulk cap. and PCB with a knife.



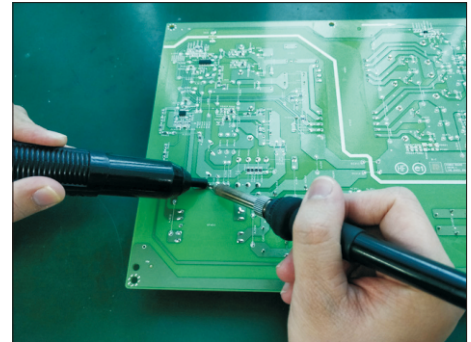
S23-2 Ensure cutting path within the glue, don't touch bulk cap. or PCB.



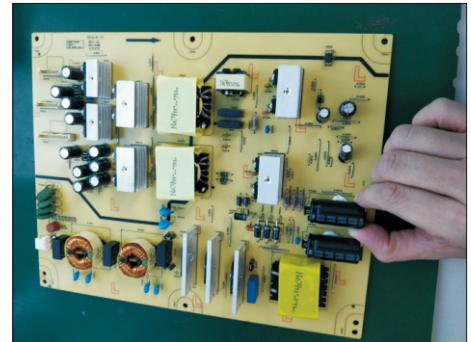
S23-3 Cut into the bottom of bulk cap. and pullit up carefully.



S23-4 Take out bulk cap. pin solder with soldering iron and absorber.



S23-5 Lift the bulk cap. up and away from the PCB.



2. Product material information

The following substances, preparations, or components should be disposed of or recovered separately from other WEEE in compliance with Article 4 of EU Council Directive 75/442/EEC.

Capacitors / condensers (containing PCB/PCT)	No used
Mercury containing components	No used
Batteries	No used
Printed circuit boards (with a surface greater than 10 square cm)	Product has printed circuit boards (with a surface greater than 10 square cm)
Component contain toner, ink and liquids	No used
Plastic containing BFR	No used
Component and waste contain asbestos	No used
CRT	No used
Component contain CFC, HCFC, HFC and HC	No used
Gas discharge lamps	No used
LCD display > 100 cm ²	Product has an LCD greater than 100 cm ²
External electric cable	Product has external cables
Component contain refractory ceramic fibers	No used
Component contain radio-active substances	No used
Electrolyte capacitors (height > 25mm, diameter > 25mm)	Product has electrolyte capacitors (height > 25mm, diameter > 25mm)

3. Tools Required

List the type and size of the tools that would typically can be used to disassemble the product to a point where components and materials requiring selective treatment can be removed.

Tool Description:

- Screwdriver (Phillip head) #1
- Screwdriver (Phillip head) #2
- Penknife
- Soldering iron and absorber