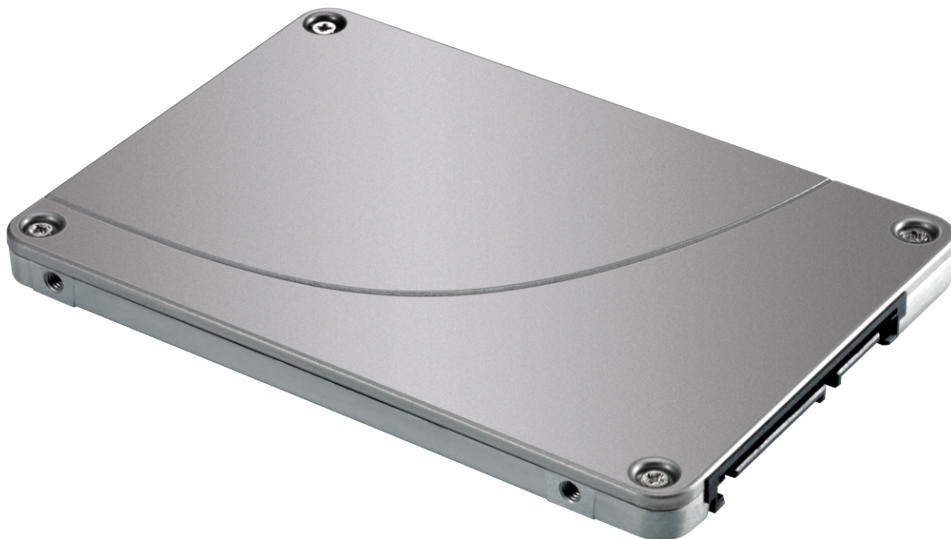


HPE 480GB SATA 6G Read Intensive SFF RW Multi Vendor SSD (P65272-B21)



What's new

- HPE 480 GB and 3.84 TB SATA 6G Read Intensive SFF (2.5-inch) BC PM893a SSD
- HPE 480 GB and 3.84 TB SATA 6G Read Intensive SFF (2.5-inch) SC PM893a SSD

Overview

Do you need to accelerate the performance and deliver enterprise features at an affordable price?

HPE SATA Read Intensive (RI) Solid State Drives (SSDs) deliver enterprise features at an affordable price. HPE SATA RI SSDs deliver great performance for workloads high in reads such as boot/swap, web servers, and read caching. HPE SSDs are backed by over 3.35 million hours of testing and qualification [1] ensuring reliable, high performing drives. HPE Digitally Signed Firmware prevents unauthorized access to your data by providing the assurance that drive firmware

comes from a trusted source. You can also monitor the lifespan of your SSD with HPE SmartSSD Wear Gauge to determine if any drives are at risk of failure.

Features

High Performance, Exceptional Reliability, and Efficiency for Faster Business Results

HPE SATA Read Intensive Solid State Drives are ideal for big data analytics, cloud computing, active archiving, database applications, and data warehousing.

HPE SSDs achieve higher IOPs to enhance the performance of your data center.

HPE SSDs maintain data accuracy with full data-path error detection.

Choose from a broad portfolio of enhanced solutions in a wide variety of capacities.

Support 6 Gb/s SATA

HPE Multi Vendor SSDs Offer Longer SKU Lifecycles and Immediate Availability on SATA SSDs

HPE enhanced its extensive SSD portfolio with a Multi Vendor SSD SKU offering that allows for extended SKU lifecycles, immediately available supply and preferably priced SATA SSDs.

HPE Multi Vendor SSD SKU offering ensures the SATA SSD selected, delivers the minimum level of performance published, or better.

Hewlett Packard Enterprise Solid State Drives are rigorously tested 3.35 million hours in various environments to achieve the quality standards you need.



Technical specifications

HPE 480GB SATA 6G Read Intensive SFF RW Multi Vendor SSD

Product Number	P65272-B21
Lifetime writes	876
Endurance DWPD (Drive Writes Per Day)	1
Read IOPS	Random Read IOPS (4KiB, Q=16)= 68,000 MAX Random Read IOPS (4KiB)= 77,000@Q32
Write IOPS	Random Write IOPS (4KiB, Q=16) = 29,000 MAX Random Write IOPS (4KiB)= 29,000@Q4
Power (Watts)	5
Plug type	Not Hot Pluggable
Height	7 mm
Platform supported	HPE Mainstream Compute Platforms
Product dimensions	12.7 x 22.86 x 17.78 cm
Weight	0.5 kg
Warranty	HPE Solid State Drives and Add-In Cards have a standard 3/0/0 warranty Customer Self Repair (CSR) subject to maximum usage limitations. Maximum usage limit is the maximum amount of data that can be written to the drive. Drives that have reached this limit will not be eligible for warranty coverage.

[1] HPE internal lab testing. 3.35 million hour test quant is derived from a combination of drive qualification test plans, specifically HDDQ spec-supplier responsibility to perform, HDDQ spec-HPE responsibility to perform, Reliability Demonstration Test (RDT) spec, CSI integration test spec and pilot test requirements.



For additional technical information, available models and options, please reference the [QuickSpecs](#)

HPE Services

No matter where you are in your transformation journey, you can count on HPE Services to deliver the expertise you need when, where and how you need it. From strategy and planning to deployment, ongoing operations and beyond, our experts can help you realize your digital ambitions.

Consulting services

Experts can help you map out your path to hybrid cloud and optimize your operations.

Managed services

HPE runs your IT operations, giving you unified control, so can focus on innovation.

Operational services

Optimize your entire IT environment and drive innovation. Manage day-to-day IT operational tasks while freeing up valuable time and resources.

- HPE Complete Care Service: a modular service designed to help optimize your entire IT environment and achieve agreed upon IT outcomes and business goals. All delivered by an assigned team of HPE experts.
- HPE Tech Care Service: the operational service experience for HPE products. The service provides access to product specific experts, an AI driven digital experience, and general technical guidance to help reduce risk and search for ways to do things better.

Lifecycle Services

Address your specific IT deployment project needs with tailored project management and deployment services.

HPE Education Services

Training and certification designed for IT and business professionals across all industries. Create learning paths to expand proficiency in a specific subject. Schedule training in a way that works best for your business with flexible continuous learning options.

The [Defective Media Retention \(DMR\)](#) service feature option applies only to Disk or eligible SSD/Flash Drives replaced by Hewlett Packard Enterprise due to malfunction. [Comprehensive Defective Material Retention \(CDMR\)](#) allows you to keep all data retentive components.

HPE GreenLake

[HPE GreenLake edge-to-cloud platform](#) is HPE's market-leading as-a-Service offering that brings the cloud experience to apps and data everywhere – data centers, multi-clouds, and edges – with one unified operating model, on premises, fully managed in a pay per use model.

If you are looking for more services, like **IT financing solutions**, please explore them [here](#).

Make the right purchase decision.
Contact our presales specialists.

[Call for availability](#)



Explore **HPE GreenLake**



Share now



Get updates

**Hewlett Packard
Enterprise**

© Copyright 2024 Hewlett Packard Enterprise Development LP. The information contained herein is subject to change without notice. The only warranties for Hewlett Packard Enterprise products and services are set forth in the express warranty statements accompanying such products and services. Nothing herein should be construed as constituting an additional warranty. Hewlett Packard Enterprise shall not be liable for technical or editorial errors or omissions contained herein.

Parts and Materials: HPE will provide HPE-supported replacement parts and materials required to maintain the covered hardware.

Parts and components that have reached their maximum supported lifetime and/or the maximum usage limitations as set forth in the manufacturer's operating manual, product quick-specs, or the technical product data sheet will not be provided, repaired, or replaced as part of these services.

Image may differ from the actual product
[PSN1014773241WWEN](#), March, 2024.