



**CERTIFICATION, TROUBLESHOOTING, and INSTALLATION** tools for professionals who install and maintain critical network cabling infrastructure.

## Featured copper cable test solutions

[www.flukenetworks.com/copper](http://www.flukenetworks.com/copper)



### LinkIQ™ Cable+Network Tester

- Cable testing you trust, network testing you need
- Cable Performance testing up to 10GBASE-T
- Displays switch name, port number, data rates and VLAN
- Network tests including ping
- Detects PoE class (1-8) and power, and performs a load test
- Displays cable length, wire map, and distance to open or short
- Manage results and print reports from LinkWare™ PC



### MicroScanner™ Series

- Displays cable length, wire map, cable ID, and distance to fault
- Displays PoE class (1-8), power (to 90W) and voltage (MS-PoE)
- Locate and trace cables with IntelliTone™ or Pro3000 probes
- Tests RJ11, RJ45, and coax
- Displays network switch speeds up to 10G
- Ethernet Alliance PoE Certified for faster and easier integration



### Add capabilities with our LinkIQ kits:

- Identify and trace copper or fiber cables
- Inspect for and solve fiber contamination issues
- Measure fiber optic power levels and loss
- Check fiber transceivers and polarity
- Pinpoint coax or fiber faults
- Cut, strip, and terminate copper cabling
- Measure voltage, current, resistance and temperature in even the most hostile environments

### MicroMapper™

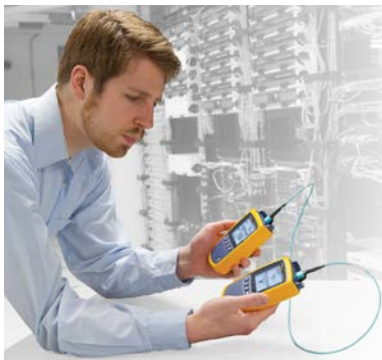
- Verify correct and erroneous wire map
- Tests twisted pair cables for open circuits, shorts, crossed pairs, reversed pairs and split pairs
- Remote identifier enables one-person testing
- Locate and trace cabling with Pro3000 probe



[www.flukenetworks.com/LIQ\\_Kits](http://www.flukenetworks.com/LIQ_Kits) for more information

## Fiber fault location, power meters, and light sources

[www.flukenetworks.com/fiber](http://www.flukenetworks.com/fiber)



### MultiFiber™ Pro MPO Loss Tester

- Automatic scanning and testing of 8 or 12 fibers in MPO connectors
- MM and SM versions available
- Cuts MPO test time 70% or more
- Automatically measures and reports polarity



### FiberLert™ Live Fiber Detector

- Light and sound indicate presence of optical signal (850 to 1625 nm)
- Suitable for ports and patch cords, SM, MM, UPC and APC
- “Non-contact” detector reduces the risk of contamination and damage
- Checks transceivers and polarity



### Fiber QuickMap™

- Locates and displays connections and breaks
- Tests MM fiber to 1,500 meters (4,921 ft)
- Simple set-up
- Displays loss and distance to fault



### SimpliFiber® Pro Power Meter/Light Source

- Supports single-mode and multimode
- Measures and stores two wavelengths at once in a single record for faster testing
- Min/Max capability tracks intermittent power fluctuations



### VisiFault™ Visual Fault Locator

- Locates tight bends, breaks and bad connectors
- Verifies polarity and identifies fibers
- Continuous and flashing modes
- Rugged design



## Copper cable toners and probes

[www.flukenetworks.com/tone](http://www.flukenetworks.com/tone)



### Pro3000™ Analog Tone and Probe Family

- Filter technology blocks annoying “buzz”
- Identifies pairs with SmartTone™
- 10 mi (16 km) range
- Tones through drywall, wood, and other enclosures
- Angled bed-of-nails clips and RJ-11 connector



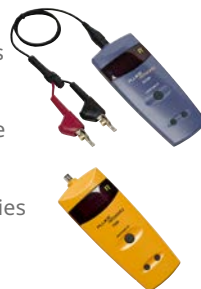
### IntelliTone™ Pro 200 LAN Tone and Probe

- Digital toning eliminates noise and false signals
- Identify pairs with SmartTone™
- Locates active networks
- Visible end-to-end continuity test
- Built in wire mapper
- Works on twisted pair, audio, and video cabling



### TS™ Series Fault Finders

- Supports two-conductor cables up to 915 m (3,000 ft.)
- Displays distance to end or fault
- SmartTone™ positively identifies pair



### Pocket Toner™

- Connects to any voice, data, or video cable to detect open/short circuits, continuity, AC/DC voltage and dial tone all while protecting up to 52 volts.



## Fiber cleaning and inspection

[www.flukenetworks.com/inspect](http://www.flukenetworks.com/inspect)



### Fiber Optic Cleaning Kits

- Eliminates the #1 cause of fiber failure: contamination
- Supports wide variety of connectors
- Quick Cleaners for end-faces and ports
- Fiber solvent and cleaning cards leave no residue or dust



### FI-500 FiberInspector™ Micro

- PortBright™ illumination for dark panels
- Auto-focus
- Clearly displays MM and SM
- Includes four UPC tips; APC available



See page 4 for our MPO Inspection Solution

### Quick Clean™ Cleaners

- Available in 1.25 mm, 2.5 mm, and MPO styles
- Clean over 500 end-faces per unit
- Tip extender to 208 mm for hard-to-reach connectors



### Test Reference Cords (TRCs) and OTDR Launch Cables

- Standards-compliant with reference grade connectors
- Durable metal LC connectors
- Launch fibers feature a rugged, convenient zipper case



## Hand tools

[www.flukenetworks.com/tools](http://www.flukenetworks.com/tools)

### D914™ Series Impact Tools

- Hook, spudger and blade storage built-in
- Adjustable impact for different wire gauges
- Optional screwdriver, sockets and bits



### JackRapid™ Punchdown Tool

- Eight times faster than traditional impact tools.
- Convenient, built-in stripper
- Adapters for a variety of vendors' jacks



### Pro-Tool™ Kits

- Dur-a-Grip™ pouch and belt clip keeps tools handy
- Available with impact tool, D-Snips™, cable stripper, and flashlight



Modular Crimper



Need-L-Lock™ Crimping Pliers



D-Snips™



Cable Strippers



Probe Pic



Can Wrenches



4 and 8 position Modular Adapters

## Telephone butt-in test sets

[www.flukenetworks.com/telco](http://www.flukenetworks.com/telco)



**TS™54**, combines advanced test set, toner, TDR and pair identifier in military grade rugged package



**TS™52PRO**, military-grade ruggedness with display and advanced features



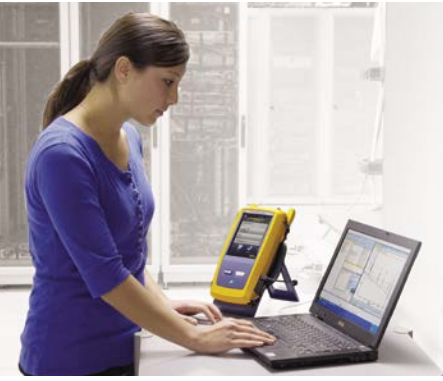
**TS™22 Series**, rugged design with time-saving features



**TS™30 Series**, rugged design priced right



**TS™25D**, feature-rich design for DSL installs



## VERSIV™

The System for certifying, managing, and reporting on your cabling installation projects

[www.flukenetworks.com/Versiv](http://www.flukenetworks.com/Versiv)

### Certify

#### DSX CableAnalyzer™ Series Copper Certification

- Unmatched speed for Cat 5-8
- Best-in-class automated diagnostics
- Meets TIA 2G and IEC Level V—the most stringent accuracy requirements
- Endorsed by over 30 cabling vendors



#### CertiFiber™ Pro Optical Loss Test Set

- Three second test time—industry's fastest
- Single module performs both SM and MM testing
- Built-in Visual Fault Locator
- SYSTIMAX Fiber Performance Calculator



#### OptiFiber™ Pro Series OTDRs

- Supports LAN, datacenters, PON, FTTx and outside plant applications
- Automated setup and expert trace analysis
- EventMap™ automatically identifies events including connectors, splices, bends, and splitters
- Gesture-based trace analysis
- Rugged, ergonomic design with convenient holster



#### FI-7000 FiberInspector™ Pro

- Automated pass/fail inspection
- Fully documents results using LinkWare™ PC or LinkWare™ Live



#### FI-3000 / FI2-7300 FiberInspector™ Ultra Inspection Camera

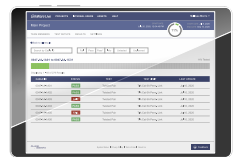
- Total MPO and single-fiber endface visibility with Live View from full trunk to individual endface
- Works with iOS or Android phones or Versiv/LinkWare
- Automated pass/fail results
- Multiple Autofocus/Auto-centering Camera design for real time imaging



### Manage

#### LinkWare™ Live Certification Management

- Upload and consolidate test results from remote sites
- Track project status from anywhere
- Create and manage test setups and cable ID's
- Track last location used and calibration status of your entire fleet



### Report

#### LinkWare™ PC Cable Test Management Software

- Electronically save, maintain and archive test results
- Professional, customizable reports
- Provides a statistical view of your entire cable plant's performance
- Compliant with TIA 606-D

