

## NDA-U-PSU1 PSU, 120VAC, for NDA-7100-PEN/PENF



- ▶ Aluminum enclosure rated to IP66 and NEMA 4X to prevent dust and water ingress
- ▶ IK10 impact rating ensures enclosure integrity

Bosch offers a series of stand-alone power supply units that provide VAC power to AUTODOME 7100i cameras for applications without PoE. Each unit has a cover door that provides IP66/NEMA 4X ingress protection and meets power and electrical safety requirements in extreme environmental conditions. The unique design and the IK10 rating protect the power supply units from vandalism and tampering events.

These units can be mounted directly to a wall or other flat surface. Optional pole and corner mounting accessories are also available, allowing you to tailor your AUTODOME installation to your specific requirements. Multiple cable gland/conduit entry points protect cables and simplify installation. The NDA-U-PSU1 includes a 120 to 24VAC transformer.

### Regulatory information

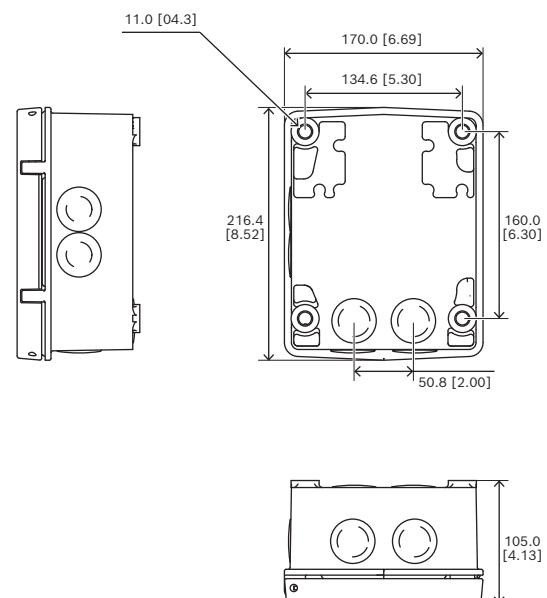
For a full list of all related certifications/standards, refer to the Product Test Reports, available on the online catalog, on the Documents tab of the product page for your device. If the document is unavailable on the product page, contact your sales representative.

EN 61000-3-2: 2014  
EN 61000-3-3: 2013  
FCC 47 Part 15 B

RoHS	Complies with EN IEC 63000:2018
------	---------------------------------

Product Safety	Complies with EN, IEC and UL Standards 62368-1: 2014
----------------	--

### Installation/configuration notes



Electromagnetic Compatibility (EMC)	Complies with FCC Part 15, ICES-003 Issue 7 (for Canada only), and CE regulations, including latest versions of: EN 50130-4: 2011 EN 55032: 2015 + a11: 2020 (Class A)
-------------------------------------	--

## Parts included

Quantity	Component
1	NDA-U-PSU1 power supply box
1	Quick installation guide
1	Safety and security information manual

## Technical specifications

Model	Input	Output Rating	Input Fuses	Output Fuses	
				Camera	Heater
NDA-U-PSU1	120 VAC, 50/60 Hz	24 V @ 96 VA	5.0 A	2.0 A	3.15 A

## Mechanical

Certifications	UL, CE, Plenum Rated
Dimensions (W x H x D), all models <sup>2</sup>	170.0 x 216.4 x 105.0 mm (6.69 x 8.52 x 4.13 in.)
Construction Material	Cast Aluminum
Standard Color	White (RAL9003)
Standard Finish	Powder coated, sand finish

2. Dimensions for power supplies include the cover.

## Environmental

Operating Temperature	-60°C to 55°C (-76°F to 131°F)
Humidity	0% to 100%, condensing
Environmental Protection	IP66, IK 10 (IEC 62262), NEMA 4X

## Ordering information

**NDA-U-PSU1 PSU, 120VAC, for NDA-7100-PEN/PENF**

Power supply unit with 120 VAC transformer, IK10

Order number **NDA-U-PSU1 | F.01U.411.640**

## Accessories

**NDA-U-PMAL Pole mount adapter large**

Universal pole mount adapter, white; large

Order number **NDA-U-PMAL | F.01U.324.944**

**NDA-U-CMT Corner mount adapter**

Universal corner mount, white

Order number **NDA-U-CMT | F.01U.324.946**

**NDA-7100-PEN Pendant arm for AUTODOME 7100i**

Pendant arm mount for AUTODOME 7100i and

AUTODOME 7100i IR cameras

Order number **NDA-7100-PEN | F.01U.389.329**

**NDA-7100-PENF Pendant arm fiber AUTODOME 7100i**

Pendant arm with direct fiber connection for

AUTODOME 7100i and AUTODOME 7100i IR cameras

Order number **NDA-7100-PENF | F.01U.395.439**

## Represented by:

**Europe, Middle East, Africa:**

Bosch Security Systems B.V.  
P.O. Box 80002  
5600 JB Eindhoven, The Netherlands  
Phone: +31 40 2577 284  
[www.boschsecurity.com/xc/en/contact/](http://www.boschsecurity.com/xc/en/contact/)  
[www.boschsecurity.com](http://www.boschsecurity.com)

**Germany:**

Bosch Sicherheitssysteme GmbH  
Robert-Bosch-Ring 5  
85630 Grasbrunn  
Tel.: +49 (0)89 6290 0  
Fax: +49 (0)89 6290 1020  
[de.securitysystems@bosch.com](mailto:de.securitysystems@bosch.com)  
[www.boschsecurity.com](http://www.boschsecurity.com)

**North America:**

Bosch Security Systems, LLC  
130 Perinton Parkway  
Fairport, New York, 14450, USA  
Phone: +1 800 289 0096  
Fax: +1 585 223 9180  
[onlinehelp@us.bosch.com](mailto:onlinehelp@us.bosch.com)  
[www.boschsecurity.com](http://www.boschsecurity.com)

**Asia-Pacific:**

Robert Bosch (SEA) Pte Ltd, Security Systems  
11 Bishan Street 21  
Singapore 573943  
Phone: +65 6571 2808  
Fax: +65 6571 2699  
[www.boschsecurity.com/xc/en/contact/](http://www.boschsecurity.com/xc/en/contact/)  
[www.boschsecurity.com](http://www.boschsecurity.com)