



Quantum
Spark™

YOU DESERVE THE BEST SECURITY

DATASHEET
QUANTUM SPARK™ 1500 PRO

QUANTUM SPARK 1500 PRO SECURITY GATEWAYS



1535 and 1555 Pro Wi-Fi



1595 Pro Wi-Fi 5G

Named Leader by Top Analyst Firms:

Gartner® Firewall Magic Quadrant™
Forrester Wave™: Enterprise Firewalls 2022

Top Security Effectiveness:

Leader with 99.7% malware block rate in
Miercom NGFW Security Benchmark 2023

AI ML powered Threat Prevention:

Protect networks and users from zero-day,
phishing, DNS, and ransomware attacks

All-In-One Security and Connectivity:

Optimize connectivity with integrated
5G, Wi-Fi 6 and SD-WAN for remote
branch offices

Unified Management and Ops Efficiency:

Increase protection and reduce TCO with a
consolidated security architecture

Industry's best security used by the world's largest enterprises, tailored to protect your SMB from cyberattacks.

Quantum Spark 1500 Pro NGFWs are the industry's first firewalls with integrated AI ML security and cutting-edge Wi-Fi 6 with 5G cellular. SD-WAN provides faster Internet connectivity, application performance, and maximum uptime. Managing Quantum Spark firewalls is easy via an intuitive web interface and a mobile management app.

SPARK 1500 PRO HIGHLIGHTS

Next Gen Firewall	Threat Prevention	Interfaces
1, 300 Mbps	900 Mbps	5G, Wi-Fi 6, LAN switch

Advanced security, uncompromising performance

The Check Point Quantum Spark 1500 Pro security gateway family delivers enterprise-grade security in a series of simple and affordable, all-in-one security solutions to protect small business employees, networks, and data from cyber-theft. Models with Wi-Fi, and Wi-Fi with an embedded 5G modem fit seamlessly into your home and branch office networks.

Comprehensive, Industry-Leading Security

- Next Generation Firewall
- Site-to-Site, Remote Access VPN
- Application Control and Web Filtering
- Intrusion Prevention
- Antivirus and Anti-Bot
- Anti-Spam Email Security
- SandBlast Threat Emulation (sandboxing)



Part of the Quantum Cyber Security Family

R81 software for SMB increases performance and brings enterprise-grade security to small and medium size businesses. Centrally managed SMB gateways support:

- Unified access policy: firewall, application control, URLF
- Policy layers and sub-policies
- Acceleration of domain, dynamic and time objects
- Multicore VPN and VPN acceleration
- Smart Accel 30% performance improvement of low risk, high bandwidth apps

Wired, Wi-Fi 6, and Wi-Fi 6 with 5G Models

5G is an essential component of any enterprise wireless WAN, either as a primary or failover link connecting fixed remote sites or a mobile fleet of vehicles. The 1595 Pro supports:

- Dual SIM single standby (DSSS)
- 5G antennas: 1x main, 2x MIMO, 1x Auxillary
- Global coverage

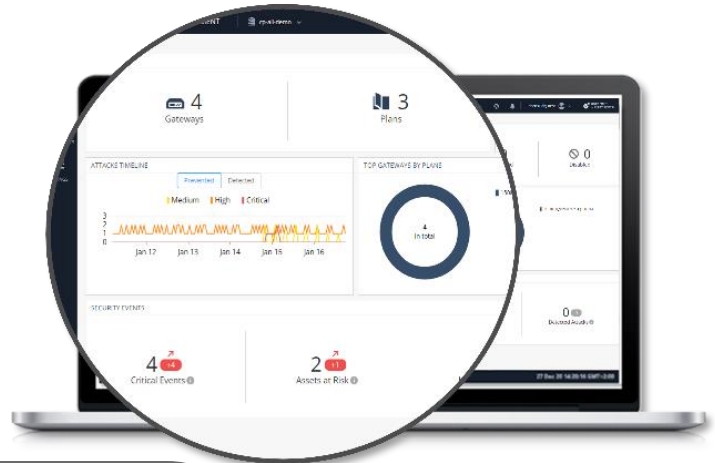


Lower the complexity of managing your security

Check Point Quantum Spark management is designed to increase scalability, improve operational efficiency, and reduce the overall cost for your business. With Zero Touch deployment and pre-defined security policies, your business is secured in minutes. Manage security locally via a Web interface or scale management with a cloud-based Check Point Security Management service. A mobile management app enables real-time access to immediately remediate threats on the go.

Cloud Management

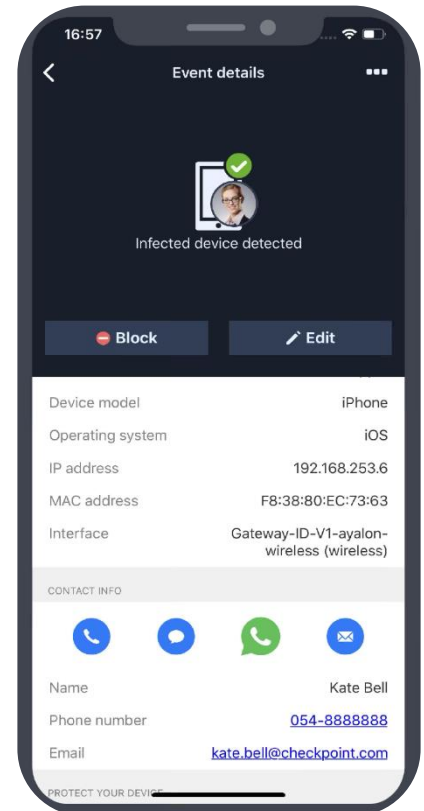
Quantum Spark cloud management enables service providers to provision security efficiently across all Check Point products and services from the Infinity Portal. Unified logs and dashboards enables Managed Service Providers to manage hundreds of thousands of Quantum Spark firewalls for their small and medium business customers so they can focus on growing their own business.



Security Management App

The intuitive mobile app provides real-time monitoring of network events, alerts you when your network is at risk, enables you to quickly block security threats, and configure the security policy for multiple gateways.

- **Network security snapshot:** view connected devices and any threats
- **Real-time security alerts:** highlights attacks and unauthorized devices
- **On-the-spot threat mitigation:** quickly block infected devices
- **Network statistic reports and charts:** gain insights on network usage patterns
- **Manage multiple gateways:** manage security in the palm of your hand



SPECIFICATIONS

	1535	1555
Enterprise Testing Conditions		
Threat Prevention with Smart Accel*	440 Mbps	600 Mbps
Threat Prevention ¹	340 Mbps	450 Mbps
Next Generation Firewall ²	600 Mbps	800 Mbps
IPS Throughput	670 Mbps	900 Mbps
Firewall Throughput	1,000 Mbps	1,000 Mbps
RFC 3511, 2544, 2647, 1242 Performance (LAB)		
Firewall 1518 Byte UDP Packets	2,000 Mbps	2,000 Mbps
VPN AES-128 Throughput	970 Mbps	1,300 Mbps
Connections per Second	10,500	14,000
Concurrent Connections	1,000,000	1,000,000
Software		
Security	Firewall, VPN, User Aware, QoS, Application Control, URLF, IPS, Anti-Bot, Antivirus, Anti-Spam, sandboxing	
Unicast, Multicast Routing and Clustering	OSPFv2, BGPv4 and 4+, RIP, PIM (SM, DM, SSM), IGMP, ClusterXL High Availability	
IPv6	local network and internet connections, dual stack tunneling IPv4 over IPv6 networks, prefix delegation	
Mobile Access License (Users)	100 remote SNX or Mobile VPN client users	
Hardware		
WAN Port	1x 10/100/1000Base-T RJ-45 port	
LAN Ports	5x 10/100/1000Base-T RJ-45 ports	
Wi-Fi (optional)	802.11 a/b/g/n/ac/ax MU-MIMO 3x3	
Radio Band	One radio band non-concurrent: 2.4GHz or 5GHz	
Console Port	1x USB-C	
USB Port	1x USB 3.0	
Dimensions		
Enclosure	Desktop, wall mount	
Dimensions (W x D x H)	210 x 160 x 37.5 mm, 8.3 x 6.3 x 1.5 in.	
Weight	0.43 kg (0.95 lbs.)	
Environment		
Operating / Storage	0°C ~ 40°C / -45°C ~ 60°C (5~95%, non-condensing)	
Power Requirements		
AC Input	100 – 240VAC, 50 – 60 Hz	
Power Supply Rating	12V/3.3A 40W power adapter	
Power Consumption (Max)	17.92 (non-Wi-Fi); 21.95W (Wi-Fi)	
Heat Dissipation	61.11(non-Wi-Fi); 74.85(Wi-Fi)	

1. Includes Firewall, Application Control, URL Filtering, IPS, Antivirus, Anti-Bot, SandBlast Zero-Day Protection with logging. 2. Includes Firewall, Application Control, IPS with logging.

* Smart Accel is available on release R81.10 and above. Smart Accel must be enabled on Web UI and is currently supported on devices managed via Web UI or SMP

SPECIFICATIONS

1595 Pro (Wi-Fi, 5G model)

- 1 802.11 a/b/g/n/ac/ax (Wi-Fi 5G option)
- 2 8x 1GbE LAN switch
- 3 1x 1GbE copper/fiber DMZ port
- 4 1x 1GbE WAN port
- 5 USB 3.0 port
- 6 USB-C console port
- 7 12V power connector



	1575	1595
Enterprise Testing Conditions		
Threat Prevention with Smart Accel*	650 Mbps	900 Mbps
Threat Prevention ¹	500 Mbps	660 Mbps
Next Generation Firewall ²	970 Mbps	1,300 Mbps
IPS Throughput	1,050 Mbps	1,400 Mbps
Firewall Throughput	2,800 Mbps	2,800 Mbps
RFC 3511, 2544, 2647, 1242 Performance (LAB)		
Firewall 1518 Byte UDP Packets	6,400 Mbps	6,400 Mbps
VPN AES-128 Throughput	1,950 Mbps	2,600 Mbps
Connections per Second	15,750	21,000
Concurrent Connections	1,000,000	1,000,000
Software		
Security	Firewall, VPN, User Aware, QoS, Application Control, URLF, IPS, Anti-Bot, Antivirus, Anti-Spam, sandboxing	
Unicast, Multicast Routing and Clustering	OSPFv2, BGPv4 and 4+, RIP, PIM (SM, DM, SSM), IGMP, ClusterXL High Availability	
IPv6	local network and internet connections, dual stack tunneling IPv4 over IPv6 networks, prefix delegation	
Mobile Access License (Users)	200 remote SNX or Mobile VPN client users	
Hardware		
WAN Port	1x 10/100/1000Base-T RJ-45 port	
DMZ Port	1x 10/100/1000Base-T RJ-45 / 1x 1000BaseF SFP port (transceiver not included)	
LAN Ports	8x 10/100/1000Base-T RJ-45 ports	
Wi-Fi (optional)	802.11 a/b/g/n/ac/ax MU-MIMO 4x4	
Radio Band	Two radio bands concurrent: 2.4GHz and 5GHz	
5G (1595 option)	Sub-6 GHz, max 4.5Gbps downlink speed and 660Mbps uplink speed. external SIM support. Dual SIM single standby (DSSS). 4x4 MIMO	
Console, USB ports	Console: 1x USB-C, USB1x USB 3.0:	
SD Card Slot	Micro-SD slot	
Dimensions		
Dimensions (W x D x H)	Desktop form factor: 210 x 170 x 42 mm, 8.3 x 6.7 x 1.7 in.	
Weight	0.87 kg (1.9 lbs.)	
Environment		
Operating / Storage	0°C ~ 40°C / -45°C ~ 60°C (5~95%, non-condensing)	
Power Requirements		
AC Input	100 – 240VAC, 50 – 60 Hz	
Power Supply Rating	12V/3.3A 40W power adapter (non-Wi-Fi), 12V/5A 60W power adapter (all Wi-Fi models)	
Power Consumption (Max)	26.01W (non-Wi-Fi); 31.28W (Wi-Fi); 35.5W (Wi-Fi-LTE), 37.26W (Wi-Fi-DSL)	
Heat Dissipation (BTU/hr.)	88.75 (non-Wi-Fi); 106.73 (Wi-Fi), 121.13 (Wi-Fi-LTE); 127.14 (Wi-Fi-DSL)	

1. Includes Firewall, Application Control, URL Filtering, IPS, Antivirus, Anti-Bot, SandBlast Zero-Day Protection with logging. 2. Includes Firewall, Application Control, IPS with logging.
 * Smart Accel is available on release R81.10 and above. Smart Accel must be enabled on Web UI and is currently supported on devices managed via Web UI or SMP

SPECIFICATIONS (Continued)

CERTIFICATIONS	
1535, 1555	
Safety	CB 62368-1, CE, CE 62368-1, UL 62638-1, CB 60950-1
Emissions	FCC IC Class B, CE LVD, VCCI, AS/NZS RCM EMC
Environment	RoHS, REACH, WEEE
1575, 1595	
Safety	CB 62368-1, CE, CE 62368-1, UL 62638-1
Emissions	FCC IC Class B, VCCI, AS/NZS RCM EMC
Environment	RoHS, REACH, WEEE
Cellular ¹	PTCRB, GCF and Carriers AT&T and Verizon certified

1. 1595 models with embedded cellular modem

ORDERING QUANTUM SPARK 1500 PRO

SECURITY APPLIANCES ¹	
1535 Security Appliance, includes SandBlast (SNBT) Security Subscription Package for 1 Year	CPAP-SG1535-SNBT
1535 Wi-Fi Security Appliance, includes SandBlast (SNBT) Security Subscription Package for 1 Year	CPAP-SG1535W-SNBT-xx
1555 Security Appliance, includes SandBlast (SNBT) Security Subscription Package for 1 Year	CPAP-SG1555-SNBT
1555 Wi-Fi Security Appliance, includes SandBlast (SNBT) Security Subscription Package for 1 Year	CPAP-SG1555W-SNBT-xx
1575 Security Appliance, includes SandBlast (SNBT) Security Subscription Package for 1 Year	CPAP-SG1575-SNBT
1575 Wi-Fi Security Appliance, includes SandBlast (SNBT) Security Subscription Package for 1 Year	CPAP-SG1575W-SNBT-xx
1595 Security Appliance, includes SandBlast (SNBT) Security Subscription Package for 1 Year	CPAP-SG1595-SNBT
1595 Wi-Fi Security Appliance, includes SandBlast (SNBT) Security Subscription Package for 1 Year	CPAP-SG1595W-SNBT-xx
1595 Wi-Fi + 5G* Security Appliance, includes SandBlast (SNBT) Security Subscription Package for 1 Year	CPAP-SG1595W5G-SNBT-xx
WI-FI REGIONS (replace –xx in the SKU to specify the Wi-Fi region)	
USA, Canada	change –xx to -US
Europe	change –xx to -EU
Japan	change –xx to -JP
Australia, Argentina	change –xx to -AU
Israel	change –xx to -IL
China	change –xx to -CN
India, Chile	change –xx to -IN
New Zealand	change –xx to -NZ
Latin America, Singapore, Hong Kong, Thailand, Sri-Lanka	change –xx to -LA
ACCESSORIES	
SFP Short range transceiver (for the DMZ 1000BaseF port)	CPAC-1500-TR-1SX
SFP Long range transceiver (for the DMZ 1000BaseF port)	CPAC-1500-TR-1LX
DSL modem in SFP form factor for 1570, 1590 WLTE	CPAC-1500-TR-DSL
DSL modem in SFP form factor for 1570, 1590 WLTE with TAE cable	CPAC-1500-TR-DSL-B
SD memory card 32 GB	CPAC-1500-32GB-SD
SD memory card 64 GB	CPAC-1500-64GB-SD
Replacement Wi-Fi Antenna	CPAC-1500-WIFI-ANTENNA
Replacement 40W AC Power Supply for 1555 and 1595 Wired	CPAC-1550-PSU
Replacement 60W AC Power Supply for 1575 and 1595 Wi-Fi and Wi-Fi-LTE	CPAC-1590-PSU
Rack Mount kit for the 1500	CPAC-1500/3600-RM-DUAL
IOT, SD-WAN AND MOBILE SOFTWARE BLADES ¹	
Mobile Access Blade for 50 concurrent connections	CPSB-MOB-50
Quantum IoT Protect for 1 year for 15x5 Firewall (1535, 1555, 1575, 1595)	CPSB-IOTP-15x5-1Y
Quantum SD-WAN for 1 year for 15x5 Firewall (1535, 1555, 1575, 1595)	CPSB-SDWAN-15x5-1Y

¹ Add a NGFW, NGTP or NGTX subscription. Promotion bundles for 3 and 5 years include the security appliance, support and subscription package (see below). License includes SMP cloud management.

* The 5G option will be available starting in May 2023

¹ Concurrent remote SNX or Mobile VPN client users. The MOB license is additive. The full Mobile Access web portal functionality is not supported.

3 and 5 Year Security Appliance, Support and Services Bundles

	NGFW	NGTP	SNBT
Security Appliance (wired, Wi-Fi or Wi-Fi with embedded 5G)	✓	✓	✓
Premium Support (24 x 7 response, software upgrades and more)	✓	✓	✓
PRO Support option (proactive health monitoring service)	✓	✓	✓
Firewall	✓	✓	✓
VPN	✓	✓	✓
Mobile Access (includes 100 concurrent users in the 1535, 1555 or 200 in the 1575, 1595)	✓	✓	✓
Application Control	✓	✓	✓
Intrusion Prevention System	✓	✓	✓
URL Filtering		✓	✓
Antivirus and Anti-Bot		✓	✓
Anti-Spam and Email Security		✓	✓
DNS Security		✓	✓
Threat Emulation (sandboxing)			✓
IoT Network protection for SMBs*			✓
SD-WAN network optimization for SMBs*	✓	✓	✓
IoT network protection for enterprises**	Optional	Optional	Optional
SD-WAN network optimization for enterprises**	Optional	Optional	Optional

Optional security capabilities can be ordered a-la-carte or separately.

* Starting from release R81.10.10. and supported on Web UI and Spark Management only

** Supported on Smart-1 only

SUBSCRIPTION SERVICES

SEE THE TABLE ABOVE FOR SECURITY CAPABILITIES INCLUDED IN THE NGFW, NGTP AND SNBT SERVICES PACKAGES. IOT AND SD-WAN ARE ORDERED A LA CARTE

SERVICE	SERVICES HIGHLIGHTS
Next-Gen Firewall (NGFW): segment networks and apply zero trust policy with IPS	<ul style="list-style-type: none"> Accept, prevent, schedule, and apply traffic-shaping based controls to application traffic 10,000+ pre-defined apps or customize your own application Protect vulnerable systems with 12,000+ IPS protections
Next-Gen Threat Prevention (NGTP): AI Deep Learning DNS security with antivirus and anti-bot prevents threats	<ul style="list-style-type: none"> DNS security prevents Command & Control (C2) connections and blocks data theft through DNS tunneling Antivirus stops incoming malicious files and links in web, email, FTP and SMB content Anti-Bot detects infected hosts and prevents communications with external C2 servers Apply web and application control using 100+ categories or customize your own
SandBlast (SNBT): comprehensive, multi-layered defense with sandboxing protection from unknown and zero-day threats	<ul style="list-style-type: none"> Average emulation time for unknown files that require full sandbox evaluation is under 100 seconds Emulation OS Support: Windows XP, 7, 8.1, 10 applications CPU-level, OS-level and static file analysis Maximal file size for Emulation is 15MB
IoT Network Protection: simple, effective, autonomous discovery and protection of IoT devices in minutes	<ul style="list-style-type: none"> Passive and active discovery of enterprise IoT devices with autonomous mapping to 200+ profiles IoT attributes include function, manufacturer, model, risk, confidence, VLAN, IP and MAC address Automatically creates and applies an inline zero-trust IoT policy layer Sees and controls over 1,500 IoT and OT protocols and commands
SD-WAN: reliable and optimum network connectivity at the lowest cost	<ul style="list-style-type: none"> Link aggregation and link prioritization according to latency, jitter, and packet loss Advanced multi-path orchestration and steering for 10,000+ apps Sub-second failover for overlay and supported applications SLA monitoring and autonomous link swapping

Note: Spark appliances offer SD-WAN Local Breakout capabilities when managed through the local web UI or Spark Management Infinity portal application service. These capabilities come without the need for additional licensing.

When managed through a Smart Management server or the Smart-1 Cloud Infinity Portal services, they can leverage both SD-WAN Local Breakout and VPN Overlay. However, it's important to note that additional Quantum SD-WAN licensing is required in this specific use case.