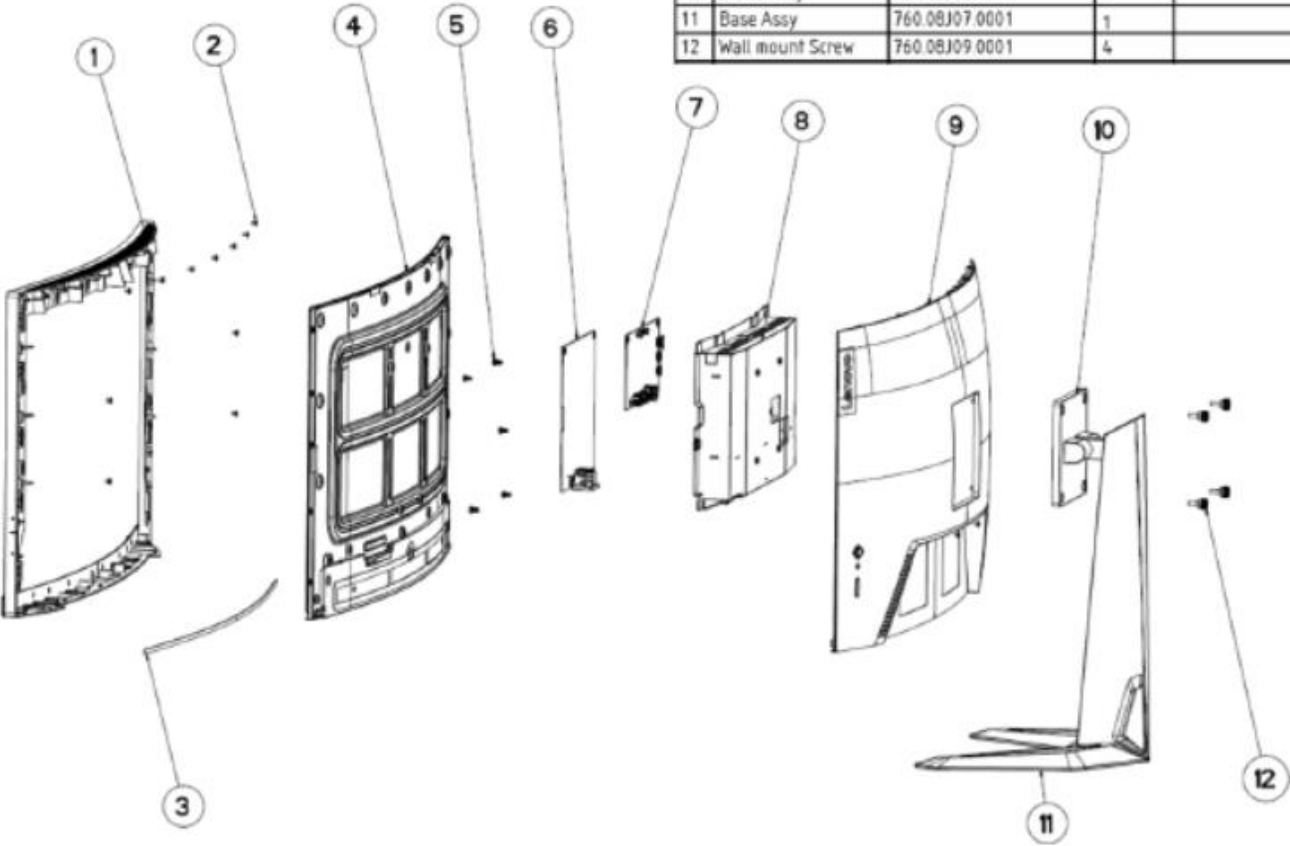


G27c-30 Simplified service manual for dismantling

Model Name: Lenovo G27c-30

Exploded Diagram

No.	Description	Part No	QTY	Note
1	Mid Cover Assy	760.09401.0001	1	
2	Screw_MC	86.5A234.5R0	11	
3	Poron	747.09401.0001	1	
4	Panel	72B.09402.0002	1	
5	Screw_IF BD	755.09401.D003	5	
6	Power BD	755.09403.D003	1	
7	IF BD	86.AR274.7R5	7	
8	Main Chassis	760.09403.0001	1	
9	Rear Cover	760.09402.0001	1	
10	Stand Assy	760.08J06.0011	1	
11	Base Assy	760.08J07.0001	1	
12	Wall mount Screw	760.08J09.0001	4	



1. Precaution

Please read the precaution as follows to prevent any damages to the LCD Monitor.

Make sure all power connector is removed. Be sure that the LCD Monitor is in power off status.

Prepare soft cloth and sponge as working platform to place LCD monitor horizontally.






Hold LCD by the side carefully and DON'T touch or press panel directly.







2. Appropriate tools

Select the Appropriate tools for disassembly and re-assembly.

Phillips screwdriver (#1)	
Phillips screwdriver (#2)	
Gloves or soft cloth	

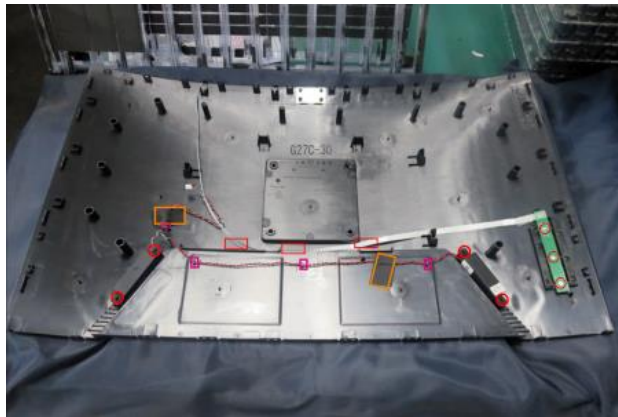
3. Disassembly SOP

<p>Put the monitor on a curve surface (Put the EPE on under the monitor)</p>	
<p>Remove the screw * 4pcs Tool : Screwdriver #2</p>	
<p>Remove the stand base</p>	
<p>Wedge your fingers between the rear cover and the middle bezel on the corners of the top side of the monitor to release the rear cover. Tool : Gloves</p>	

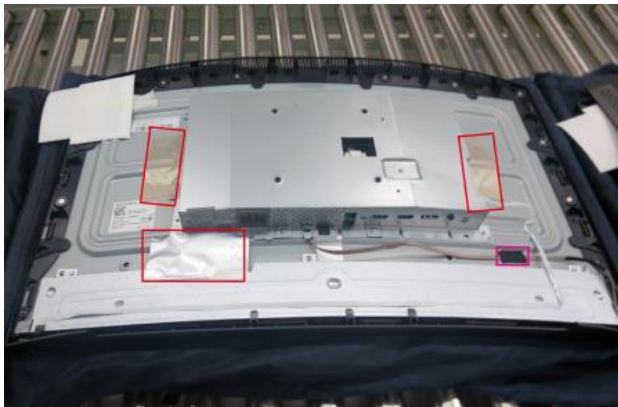
Lift the rear cover up carefully.
Disconnect the speakers' wire and joystick cable and then remove the rear cover



Tear off 2pcs conductive tape,
release the wires and speakers.
Remove the screw * 3pcs
Tool : Screwdriver #1



Remove 1pcs aluminum foil, 2pcs
acetate tape and 1pcs conductive
tape.



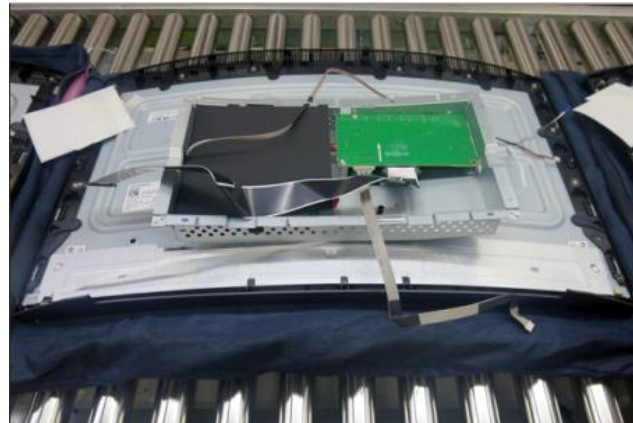
Remove 2pcs screws
Tool : Screwdriver #2



Unplug light bar line and LVDS line



Lift up bracket chassis and put it aside.



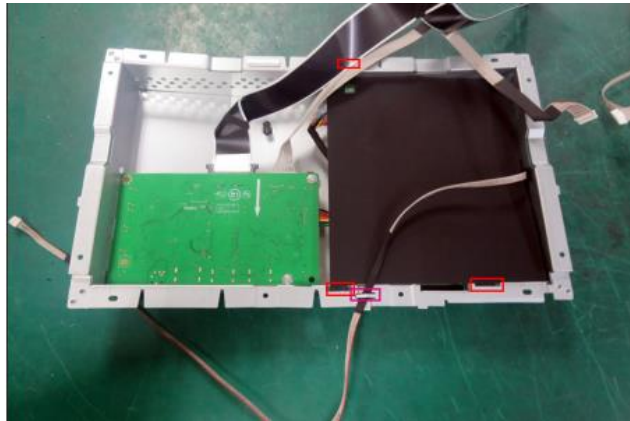
Remove all screws
Tool : Screwdriver #2



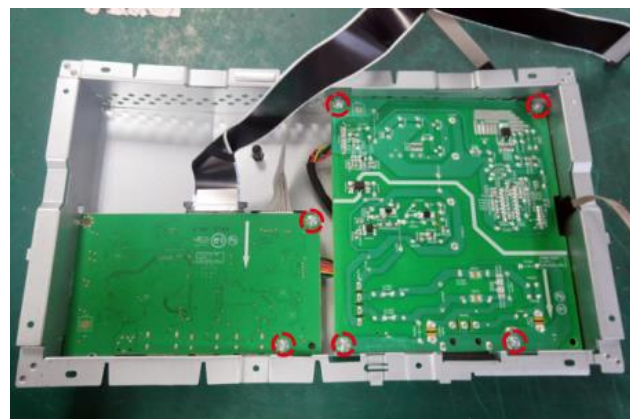
Release the middle frame from the Panel



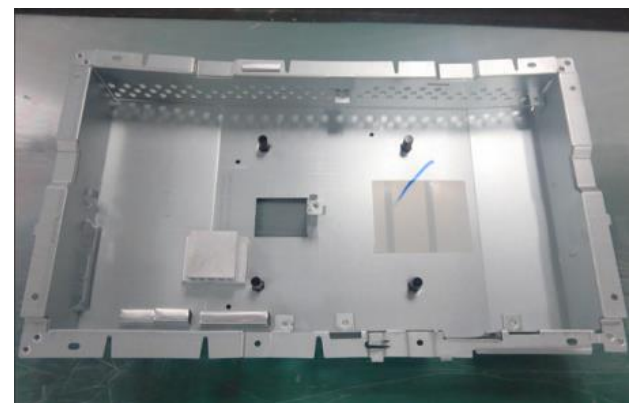
Release the lamp cable from the hook, then take out the mylar sheet from main chassis



Remove All screw.
Tool : Screwdriver #2



Take out PCB and Peel off all mylar.



Take out the Thermal pads from Power PCB

