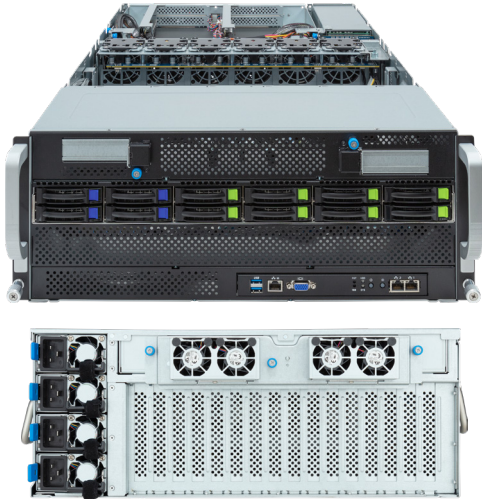


# G493-ZB1-AAP1

HPC Server - 4U DP 10 x Gen5 PCIe GPU



## Features

- Supports up to 10 x double slot Gen5 GPU cards
- AMD EPYC™ 9004 series processor family
- Dual processors, 5nm technology
- 12-Channel RDIMM DDR5, 48 x DIMMs
- Dual ROM Architecture supported
- 2 x 1Gb/s BASE-T LAN ports (Intel® I350-AM2)
- 1 x dedicated management port
- 8 x Gen5 NVMe/SATA + 4 x SATA 2.5" hot-swap bays
- 2 x Ultra-Fast M.2 with PCIe Gen3 interface
- 10 x PCIe Gen5 x16 FHFL expansion slots for GPUs
- 2 x PCIe Gen5 x16 LP MD2 expansion slots on front side
- 3+1 3000W (240V) 80 PLUS Titanium redundant power supply

## Specification

<b>Dimensions</b>	4U (W448 x H176 x D880 mm)	<b>Backplane I/O</b>	PCIe Gen5 x4 or SATA 6Gb/s or SAS 12Gb/s
<b>Motherboard</b>	MZB3-G41	<b>TPM</b>	1 x TPM header with SPI interface Optional TPM2.0 kit: CTM010
<b>CPU</b>	AMD EPYC™ 9004 series processor Dual processor, 5nm technology, cTDP up to 400W Up to 96-core, 192 threads per processor 2 x LGA 6096 Socket SP5	<b>Power Supply</b>	3+1 3000W 80 PLUS Titanium redundant power supply AC Input: 100-240V
<b>Chipset</b>	System on Chip	<b>System Management</b>	Aspeed® AST2600 management controller GIGABYTE Management Console (AMI MegaRAC SP-X)
<b>Memory</b>	48 x DDR5 DIMM slots, 12-Channel memory per processor RDIMM modules up to 128GB supported 3DS RDIMM modules up to 256GB supported Memory speed: Up to 4800 MHz (1DPC), 3600 MHz (2DPC)	<b>OS Compatibility</b>	Windows Server 2019 / 2022 RHEL 8.6 / 8.7 / 9.0 / 9.1 (x64) SLES 15 SP4 (x64) Ubuntu 20.04.5 LTS / 22.04 LTS / 22.04.1 LTS (x64) VMware ESXi 7.0 Update / 8.0 Citrix Hypervisor 8.2.1
<b>LAN</b>	2 x 1Gb/s BASE-T LAN ports (1 x Intel® I350-AM2) Supported NCSI function 1 x 10/100/1000 management LAN	<b>System Fans</b>	6 x 60x60x38mm (23,000rpm), 4 x 40x40x28mm (25,000rpm)
<b>Video</b>	Integrated in Aspeed AST2600 2D Video Graphic Adapter with PCIe bus interface 1920x1200@60Hz 32bpp, DDR4 SDRAM	<b>Operating Properties</b>	Operating temperature: 10°C to 35°C Operating humidity: 8-80% (non-condensing) Non-operating temperature: -40°C to 60°C Non-operating humidity: 20%-95% (non-condensing)
<b>Storage</b>	8 x 2.5" Gen5 NVMe/SATA/SAS hot-swappable bays 4 x 2.5" SATA/SAS hot-swappable bays SAS card is required for SAS devices support	<b>Packaging Content</b>	1 x G493-ZB1, 2 x CPU heatsinks 1 x Rail kit
<b>Expansion Slots</b>	10 x PCIe Gen5 x16 FHFL slots for GPUs 2 x PCIe Gen5 x16 Low-profile MD2 slots on front side 2 x M.2 slots (M-key, PCIe Gen3 x4, supports 2280/ 22110)	<b>Reference Numbers</b>	Barebone with rail kit: 6NG493ZB1DR000AAP1* - Motherboard: 9MZB3G41UR-000 - Rail kit: 25HB2-A96100-K0R - CPU fan-sink: 25G49-3ZB000-E57X - Power supply: 25EP0-230005-G1S - C19 power cord 125V/15A (US): 25CP1-018000-Q0R (optional) - C19 power cord 250V/16A (EU): 25CP3-01830H-Q0R (optional)
<b>Front I/O</b>	2 x USB 3.2 Gen1, 1 x VGA, 2 x RJ45, 1 x MLAN		
<b>Rear I/O</b>	N/A		



Learn more about GIGABYTE server, visit [www.gigabyte.com/Enterprise](http://www.gigabyte.com/Enterprise)

\* All specifications are subject to change without notice. Please visit our website for the latest information.  
\* AMD, the AMD Arrow logo, EPYC and combinations thereof are trademarks of Advanced Micro Devices, Inc.  
\* All other brands, logos and names are property of their respective owners.

© 2023 Giga Computing Technology Co., Ltd. All rights reserved.

Engineered by

