



# HP Engage One Pro AIO System

Ultra sleek and fast for exceptional experiences

Introducing the point of sale system meticulously crafted to elevate your customer experience and power essential business operations. It combines a sleek yet durable design with powerhouse computing and offers an abundance of deployment options so you can tailor it to your specific needs.



\*Product image may differ from actual product

## Every detail crafted with intention.

- Purposeful design meets sophisticated craftsmanship in a sleek aluminum frame, in black or white<sup>1</sup>, with hidden cable management to keep your space clutter-free. Experience full visibility under any light with a bright, up to 625 nits anti-glare touchscreen<sup>2</sup>.

## Fast performance for ultra smooth interactions.

- Push productivity to the limit with up to a 10th Gen Intel® Core™ i9 processor<sup>3</sup> and optimized thermals, delivering fast, seamless customer interactions while running whisper quiet. And with optional Intel® vPro®<sup>4</sup>, you can manage your system remotely.

## Deploy it your way

- Countertop, clean counter mount<sup>5</sup> or kiosk. Three screen sizes. Portrait or landscape. Choose the setup that best suits your needs. From full range tilt and height adjustability to ports for accessories, it's the POS system that can be deployed how you want it.

## Durability you need. Security you can trust.

- This system is designed to pass rigorous military standard testing<sup>6</sup>, resist dust and liquid intrusion<sup>7</sup>, and withstand frequent sanitization<sup>8</sup> and has an IP 44 rating<sup>16</sup>. Advanced security features come standard, to help keep your data, devices, and customers safe and protected.
- Run demanding software solutions and get your customers quickly on their way with a 10th generation Intel® Core™ processor that delivers powerful performance and productivity.<sup>9</sup>
- Our premium anti-glare FHD touchscreen, offered in 15.6", 19.5" and 23.8" diagonal, boasts up to 625 nits of brightness for crystal clear legibility under any lighting conditions.<sup>2</sup>
- Select from a full ecosystem of optional accessories, designed to attach flush to screen and preserve the sleek design while providing needed functionality.<sup>11</sup>
- Built for sustainability with ocean-bound and recycled plastics and recycle-friendly metals.<sup>12</sup>
- Go ahead and plan for the future with a five-year product lifecycle and 10-year service life, delivering the consistency you need for staggered roll-outs.
- HP's most advanced security features come standard including HP BIOSphere Gen6 with automatic updates and security checks and HP Sure Start, HP Sure Run, HP Sure Click, and more.<sup>13,14,15</sup>
- The latest in heat management brings you an optimized thermal design, which keeps your system cool and optimizes energy efficiency, all while running whisper quiet.

# HP Engage One Pro AIO System Specifications Table



\*Product image may differ from actual product

Available Operating Systems	Windows 11 Pro <sup>1</sup> Windows 10 IoT Enterprise 2021 LTSC <sup>1</sup> Windows 10 IoT Enterprise 2019 LTSC <sup>1</sup> Android™ 11 Android™ 11 AOSP Android™ 11 GMS FreeDOS 2.0 SUSE Linux® Enterprise Server 15
Processor family <sup>3</sup>	10th Generation Intel® Core™ i9 processor; 10th Generation Intel® Core™ i7 processor; 10th Generation Intel® Core™ i5 processor; 10th Generation Intel® Core™ i3 processor; Intel® Pentium® processor; Intel® Celeron® processor
Available Processors <sup>2,3,7,8</sup>	Intel® Celeron® G5900E with Intel® UHD Graphics 610 (3.2 GHz base frequency, 2 MB L3 cache, 2 cores); Intel® Pentium® Gold G6400E with Intel® UHD Graphics 610 (3.8 GHz base frequency, 4 MB L3 cache, 2 cores); Intel® Core™ i3-10100E with Intel® UHD Graphics 630 (3.2 GHz base frequency, up to 3.8 GHz with Intel® Turbo Boost Technology, 6 MB L3 cache, 4 cores); Intel® Core™ i7-10700E with Intel® UHD Graphics 630 (2.9 GHz base frequency, up to 4.5 GHz with Intel® Turbo Boost Technology, 16 MB L3 cache, 8 cores), supports Intel® vPro® Technology; Intel® Core™ i5-10500E with Intel® UHD Graphics 630 (3.1 GHz base frequency, up to 4.2 GHz with Intel® Turbo Boost Technology, 12 MB L3 cache, 6 cores), supports Intel® vPro® Technology; Intel® Core™ i9-10900E with Intel® UHD Graphics 630 (2.8 GHz base frequency, up to 4.7 GHz with Intel® Turbo Boost Technology, 20 MB L3 cache, 10 cores), supports Intel® vPro® Technology
Chipset	Intel® Q470E
Product colour	Ebony black or ceramic white
Maximum memory	64 GB DDR4-2666 SDRAM <sup>4</sup> Transfer rates up to 2666 MT/s.
Memory slots	2 SODIMM
Internal storage	128 GB up to 1 TB PCIe® NVMe™ SSD <sup>5</sup> 256 GB up to 1 TB PCIe® NVMe™ SSD <sup>5</sup>
Display	15.6" diagonal, FHD (1920 x 1080), touch, IPS, anti-glare, 400 nits, 45% NTSC; 19.5" diagonal, FHD (1920 x 1080), touch, VA, anti-glare, 450 nits, 72% NTSC; 23.8" diagonal, FHD (1920 x 1080), touch, IPS, anti-glare, 625 nits, 72% NTSC <sup>13,15</sup> 39.6 cm (15.6") diagonal, FHD (1920 x 1080), touch, IPS, anti-glare, 400 nits, 45% NTSC; 49.5 cm (19.5") diagonal, FHD (1920 x 1080), touch, VA, anti-glare, 450 nits, 72% NTSC; 60.5 cm (23.8") diagonal, FHD (1920 x 1080), touch, IPS, anti-glare, 625 nits, 72% NTSC <sup>13,15</sup>
Available Graphics	Integrated: Intel® UHD Graphics 610; Intel® UHD Graphics 630
Audio	Integrated HD audio with Realtek ALC3247 codec with standard internal speakers and stereo headphone jack, 2W
Expansion slots	1 M.2 2230 <sup>6</sup>
Ports and connectors	Display head: 1 audio-out; 2 SuperSpeed USB Type-A 5Gbps signaling rate; 2 SuperSpeed USB Type-A 5Gbps signaling rate (HP Sleep and Charge); 1 RJ-45 USB NIC; 1 140W data port <sup>21</sup> ; Side: 1 Security lock slot <sup>14</sup> ; Internal: 1 SuperSpeed USB Type-A 5Gbps signaling rate <sup>18</sup> ; Optional Ports: Choose one of the following connectivity hubs: Advance hub: [1 cash drawer connector; 3 USB 2.0 Type-A; 2 power serial, 4 SuperSpeed USB Type-A 10Gbps signaling rate, 1 RJ-45 USB NIC, 1 DC connector, 1 SuperSpeed USB Type-C® 5Gbps signaling rate (27W USB Power Delivery, Alt Mode DisplayPort™), 1 140W data port]. Column hub: [3 SuperSpeed USB Type-A 10Gbps signaling rate, 1 RJ-45 USB NIC, 1 DC connector, 2 USB 2.0 Type-A, 1 SuperSpeed USB Type-C® 5Gbps signaling rate (27W USB Power Delivery, Alt Mode DisplayPort™), 1 140W data port]. Vesa hub: [3 SuperSpeed USB Type-A 10Gbps signaling rate, 1 RJ-45 USB NIC, 1 DC connector, 2 USB 2.0 Type-A, 1 SuperSpeed USB Type-C® 5Gbps signaling rate (27W USB Power Delivery, Alt Mode DisplayPort™), 1 140W data port]. Combination of Advance hub with Column hub; Combination of Advance hub with VESA hub. <sup>21,22</sup>
Communications	LAN: Intel® 1219-LM GbE, vPro®; Realtek RTL8153AH GbE <sup>14</sup> ; WLAN: Intel® Wi-Fi 6 AX201 (2x2) and Bluetooth® 5.2 wireless card, vPro®; Intel® Wi-Fi 6 AX201 (2x2) and Bluetooth® 5.2 wireless card, non-vPro®; NFC Mirage WNC XRAV-1
Drive Bays	Two M.2
Environmental	Operating temperature: 10 to 40°C; Operating humidity: 20 to 85% RH;
Software	HP Credential Guard; HP Device Guard; HP Support Assistant; HP BIOSphere with Sure Start Generation 6.0; <sup>9</sup>
Security management	HP Sure Sense; HP Sure Click (Standard); HP Sure Admin; HP MIK (SCCM Integration); HP Image Assistant; HP BIOSphere with SureStart Gen6; HP Client Security Manager Gen7; HP Sure Recover Gen3; HP Sure Run Gen3; <sup>9,12,20</sup>
Fingerprint reader	Fingerprint reader (select models)
Management features	Intel® vPro® with AMT 11.0; TPM 2.0; HP System Software Manager; HP Image Assistant; HP Client Security Manager
Power	280 W external Smart AC power adapter, up to 89% efficiency, active PFC (advance hub); 230 W external Smart AC power adapter, up to 89% efficiency, active PFC (column hub); 230 W external Smart AC power adapter, up to 89% efficiency, active PFC (VESA hub)
Dimensions	15.6 x 1 x 9.5 in (head Landscape); 15.6 x 1 x 9.5 in (head portrait); 19.5 x 1.2 x 11.5 in (head Landscape); 19.5 x 1.2 x 11.5 in (head Portrait); 23.8 x 1.2 x 13.4 in (head Landscape); 23.8 x 1.2 x 13.4 in (head Portrait); 0.6 x 0.4 x 0.6 in (performance and pro stand); 39.76 x 2.64 x 24.1 cm (head landscape); 39.76 x 2.64 x 24.1 cm (head portrait); 49.48 x 2.94 x 29.26 cm (head landscape); 49.48 x 2.94 x 29.26 cm (head portrait); 60.50 x 2.94 x 33.99 cm (head landscape); 60.50 x 2.94 x 33.99 cm (head portrait); 15.2 x 1.0 x 15.2 cm (performance and pro stand); (Stand only.)
Weight	0.1 lb (performance and pro stand); 7.4 lb (15.6" display models); 12.6 lb (19.5" display models); 15 lb (23.8" display models); .06 kg (performance and pro stand); 3.37 kg (15.6" display models); 5.70 kg (19.5" display models); 6.8 kg (23.8" display models)
Sustainable impact specifications	Ocean-bound plastic in speaker enclosure; 50% post-consumer recycled plastic; 25% ITE-derived closed loop plastic; Low Halogen <sup>11,23,24,25</sup>
Barcode reader	Optional HP Engage One Pro integrated BCS
Magnetic stripe reader	Optional integrated magnetic stripe reader; Single-head, bi-directional, and encryption capable

# HP Engage One Pro AiO System

## Accessories and services (not included)

HP Engage Express Countertop 1



Deliver maximum functionality in a small footprint design with the HP Engage Express Countertop Stand. This simple stand meets your essential self-service needs without additional peripherals.<sup>7</sup>

**Product number: 6P2E2AA**

<sup>7</sup> HP Engage One Pro AiO Head Unit is not included and must be purchased separately.

HP Engage Express Countertop 2



Deliver maximum functionality in a small footprint, self-service design with the HP Engage Express Countertop Stand with included payment arm. The payment arm has a 75 mm VESA<sup>®</sup> and tilts 0 to 65 degrees.<sup>1,7</sup>

**Product number: 6P2E3AA**

<sup>1</sup> Payment arm is 75 mm VESA<sup>®</sup> and is compatible only with HP Engage 6.6 inch Display for Ingenico Moby 5500M and HP Engage 6.6 inch Display with Ingenico Moby 5500M, available in the U.S. only. Payment terminals and 3rd party payment mounts not included with payment arm. Must configure payment arm at purchase.

<sup>7</sup> HP Engage One Pro AiO Head Unit is not included and must be purchased separately.

HP Engage Express Countertop 3



Deliver maximum functionality in a small footprint, self-service design with the HP Engage Express Countertop Stand with included Custom Modus3 Printer.<sup>2</sup> The printer sleekly integrates into a front accessible drawer for easy maintenance.<sup>7</sup>

**Product number: 6P2E4AA**

<sup>2</sup> The Custom Modus3 Printer is factory install only and must be configured at purchase.

<sup>7</sup> HP Engage One Pro AiO Head Unit is not included and must be purchased separately.

purchase.

HP Engage Express Countertop 4



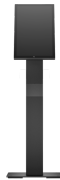
Deliver maximum functionality in a small footprint, self-service design with the HP Engage Express Countertop Stand with included payment arm<sup>1</sup> and Custom Modus3 Printer.<sup>2</sup> The payment arm has a 75 mm VESA<sup>®</sup> and tilts 0 to 65 degrees<sup>1</sup>, and the printer sleekly integrates into a front accessible drawer for easy maintenance.<sup>7</sup>

**Product number: 6P2E5AA**

<sup>1</sup> Payment arm is 75 mm VESA<sup>®</sup> and is compatible only with HP Engage 6.6 inch Display for Ingenico Moby 5500M and HP Engage 6.6 inch Display with Ingenico Moby 5500M, available in the U.S. only. Payment terminals and 3rd party payment mounts not included with payment arm. Must configure payment arm at purchase.

<sup>2</sup> The Custom Modus3 Printer is factory install only and must be configured at purchase.

HP Engage Express Pedestal 5



Enhance and streamline customer experiences with an elegantly crafted, highly versatile self-service stand. The HP Engage Express Pedestal Stand<sup>3</sup> delivers a sleek footprint and is ruggedly durable — meeting all your essential self-service needs.<sup>7</sup>

**Product number: 6P2E7AA**

<sup>3</sup> HP Engage Express Pedestal Stand must be bolted to the floor, bolts not included. See product Quick Specs for more information.

<sup>7</sup> HP Engage One Pro AiO Head Unit is not included and must be purchased separately.

HP Engage Express Pedestal 6



Enhance and streamline customer experiences with the sleek HP Engage Express Pedestal Stand<sup>3</sup> with included payment arm. It's elegantly crafted, ruggedly durable, and the payment arm has a 75 mm VESA<sup>®</sup> and tilts 0 to 65 degrees.<sup>1,7</sup>

**Product number: 6P2E8AA**

<sup>1</sup> Payment arm is 75 mm VESA<sup>®</sup> and is compatible only with HP Engage 6.6 inch Display for Ingenico Moby 5500M and HP Engage 6.6 inch Display with Ingenico Moby 5500M, available in the U.S. only. Payment terminals and 3rd party payment mounts not included with payment arm. Must configure payment arm at purchase.

<sup>3</sup> HP Engage Express Pedestal Stand must be bolted to the floor, bolts not included. See product Quick Specs for more information.

HP Engage Express Pedestal 7



Enhance and streamline customer experiences with the sleek HP Engage Express Pedestal Stand<sup>3</sup> with included Custom Modus3 Printer<sup>2</sup>. It's elegantly crafted, ruggedly durable, and the printer cleanly integrates into a front accessible drawer for easy maintenance.<sup>7</sup>

**Product number: 6P2E9AA**

<sup>2</sup> The Custom Modus3 Printer is factory install only and must be configured at purchase.

HP Engage Express Pedestal 8



Enhance and streamline customer experiences with the elegantly crafted, ruggedly durable HP Engage Express Pedestal Stand<sup>3</sup> with included payment arm<sup>1</sup> and Custom Modus3 Printer<sup>2</sup>. The payment arm has a 75 mm VESA<sup>®</sup> and tilts 0 to 65 degrees<sup>1</sup>, and the printer sleekly integrates into a front accessible drawer for easy maintenance.<sup>7</sup>

**Product number: 6P2F0AA**

<sup>1</sup> Payment arm is 75 mm VESA<sup>®</sup> and is compatible only with HP Engage 6.6 inch Display for Ingenico Moby 5500M and HP Engage 6.6 inch Display with Ingenico Moby 5500M, available in the U.S. only. Payment terminals and 3rd party payment mounts not included with payment arm. Must configure payment arm at purchase.

<sup>2</sup> The Custom Modus3 Printer is factory install only and must be configured at purchase.

## HP Engage Express Pedestal 9



Enhance and streamline customer experiences with the elegantly crafted, ruggedly durable HP Engage Express Pedestal Stand<sup>3</sup> with included payment arm<sup>1</sup>, Custom Modus3 Printer<sup>2</sup>, and hand-held HP Engage 2D G2 Barcode Scanner. The payment arm has a 75 mm VESA® and tilts 0 to 65 degrees<sup>1</sup>, the printer sleekly integrates into a front accessible drawer for easy maintenance, and the hand-held barcode scanner allows scanning of 1D and 2D omnidirectional barcodes as well as mobile device scanning.<sup>7</sup>

**Product number: 6P2F1AA**

<sup>1</sup> Payment arm is 75 mm VESA® and is compatible only with HP Engage 6.6 inch Display for Ingenico Moby 5500M and HP Engage 6.6 inch Display with Ingenico Moby 5500M, available in the U.S. only. Payment terminals and 3rd party payment mounts not included with payment arm. Must configure payment arm at purchase.

<sup>2</sup> The Custom Modus3 Printer is factory install only and must be configured at purchase.

## HP Engage Express Pedestal 10



Enhance and streamline customer experiences with the elegantly crafted, ruggedly durable HP Engage Express Pedestal Stand<sup>3</sup> with included payment arm<sup>1</sup>, Custom Modus3 Printer<sup>2</sup>, and Datalogic Magellan 1500i Barcode Scanner<sup>4</sup>. The payment arm has a 75 mm VESA® and tilts 0 to 65 degrees<sup>1</sup>, and the printer sleekly integrates into a front accessible drawer for easy maintenance. The barcode scanner integrates into the stand for a seamless scanning solution.<sup>7</sup>

**Product number: 6P2F2AA**

<sup>1</sup> Payment arm is 75 mm VESA® and is compatible only with HP Engage 6.6 inch Display for Ingenico Moby 5500M and HP Engage 6.6 inch Display with Ingenico Moby 5500M, available in the U.S. only. Payment terminals and 3rd party payment mounts not included with payment arm. Must configure payment arm at purchase.

<sup>2</sup> The Custom Modus3 Printer is factory install only and must be configured at purchase.

## HP Engage Express Pedestal 11



Enhance and streamline customer experiences with the elegantly crafted, ruggedly durable HP Engage Express Pedestal Stand<sup>3</sup> with included payment arm<sup>1</sup>, Custom Modus3 Printer<sup>2</sup>, integrated Datalogic Magellan 1500i Barcode Scanner<sup>4</sup>, and hand-held HP Engage 2D G2 Barcode Scanner. It delivers maximum function in a modern, small footprint design to complement your environment.<sup>7</sup>

**Product number: 6P2F3AA**

<sup>1</sup> Payment arm is 75 mm VESA® and is compatible only with HP Engage 6.6 inch Display for Ingenico Moby 5500M and HP Engage 6.6 inch Display with Ingenico Moby 5500M, available in the U.S. only. Payment terminals and 3rd party payment mounts not included with payment arm. Must configure payment arm at purchase.

<sup>2</sup> The Custom Modus3 Printer is factory install only and must be configured at purchase.

## HP Engage Express Bag Holder



Easy to use, the HP Engage Express Bag Holder<sup>6</sup> securely holds bags on the right side of the HP Engage Express Pedestal Stand<sup>3</sup> for quick and efficient checkout.

**Product number: 6P2F7AA**

<sup>3</sup> HP Engage Express Pedestal Stand must be bolted to the floor, bolts not included. See product Quick Specs for more information.

<sup>6</sup> HP Engage Express Shelves and HP Engage Express Bag Holder are only compatible with the HP Engage Express Pedestal Stand.

## HP Engage Express Countertop BCS Cradle



Built for demanding environments, the HP Engage Express Countertop Barcode Scanner Cradle<sup>5</sup> provides an optimal place for your hand-held barcode scanner to rest while keeping counters clutter-free. HP Engage Express Countertop BCS Cradle includes the HP Engage 2D G2 Barcode Scanner.<sup>7</sup>

**Product number: 6P2F9AA**

<sup>5</sup> HP Engage Express Countertop Cradle includes the HP Engage 2D G2 Barcode Scanner and is only compatible with the HP Engage Express Countertop Stand.

<sup>7</sup> HP Engage One Pro AiO Head Unit is not included and must be purchased separately.

## HP Engage Express Shelves



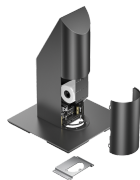
Add greater convenience to the self-checkout experience with HP Engage Express Shelves<sup>6</sup> for the HP Engage Express Pedestal Stand.<sup>3</sup> One right shelf and one left shelf are included.<sup>7</sup>

**Product number: 6P2G0AA**

<sup>3</sup> HP Engage Express Pedestal Stand must be bolted to the floor, bolts not included. See product Quick Specs for more information.

<sup>6</sup> HP Engage Express Shelves and HP Engage Express Bag Holder are only compatible with the HP Engage Express Pedestal Stand. Maximum weight per shelf is 20 kg/ 44 lb and if a bag holder is used, a shelf must be placed underneath the bag holder.

## HP Engage Express Countertop Mount



Enhance your peace of mind and securely mount your HP Engage Express to any countertop surface with our HP Engage Express Countertop Mount.

**Product number: 7P9E2AA**

## HP Engage Express Universal Payment Arm



Customize your customer experience with HP's Engage Express Universal Payment Arm<sup>8</sup> enabling a variety of different payment terminal connections to our HP Engage Express Countertop and Pedestal Stands.

**Product number: 7Y397AA**

<sup>8</sup> HP Engage Express Universal Payment Arm requires a 3PO payment bracket to connect to a payment terminal. Payment bracket and payment terminal not included. Must chose a HP Engage Express Countertop or Pedestal Stand enabled for payment at purchase or the universal payment arm will not connect to the stand.

# HP Engage One Pro AIO System

## Messaging Footnotes

- <sup>1</sup> White is only available in 15.6" and 23.8".
- <sup>2</sup> Actual brightness will be lower with touch screen.
- <sup>3</sup> Multicore is designed to improve performance of certain software products. Not all customers or software applications will necessarily benefit from use of this technology. Performance and clock frequency will vary depending on application workload and your hardware and software configurations. Intel's numbering, branding and/or naming is not a measurement of higher performance.
- <sup>4</sup> vPRO support requires either an Intel Core i5 or Core i7 processor and vPRO WLAN Card.
- <sup>5</sup> Mounting hardware sold separately.
- <sup>6</sup> MIL-STD-810G testing is not intended to demonstrate fitness of U.S. Department of Defense (DoD) contract requirements or for military use. Test results are not a guarantee of future performance under these test conditions. Accidental damage requires an optional HP Accidental Damage Protection Care Pack.
- <sup>7</sup> HP Total Test Process test results are not a guarantee of future performance under these test conditions. Accidental damage requires an optional HP Accidental Damage Protection Care Pack.
- <sup>8</sup> Tested by up to 10,000 wipes with germicidal towelettes over a 3-year period. See user guide for cleaning instructions. Tested with Sani-Cloth® HB Germicidal Disposable Wipe (EPA Reg. No. 61178-4-9480), Sani-Cloth® Plus Germicidal Disposable Cloth (EPA Reg. No. 9480-6), Sani-Cloth® AF3 Germicidal Disposable Wipes (EPA Reg. No. 9480-9), Super Sani-Cloth® Germicidal Disposable Wipes (EPA Reg. 9480-4), CaviWipes® (EPA Reg. No. 46781-8), Clorox Healthcare® Bleach Germicidal Wipes (EPA Reg. No. 67619-12), Windex® Electronic Wipes and PDI Easy Screen® Cleaning Wipe.
- <sup>9</sup> HP 44 rating is not a guarantee of future performance under these test conditions. Accidental damage requires an optional HP Accidental Damage Protection Care Pack.
- <sup>10</sup> 10th Gen Intel® Processors are an optional feature that must be configured at purchase. Multicore is designed to improve performance of certain software products. Not all customers or software applications will necessarily benefit from use of this technology. Performance and clock frequency will vary depending on application workload and your hardware and software configurations. Intel's numbering, branding and/or naming is not a measurement of higher performance.
- <sup>11</sup> Optional features sold separately or as add-on features.
- <sup>12</sup> 5% ocean bound plastics in speaker enclosure. 50% of the plastics in the product are made from recycled plastics. 100% of the Aluminum in the product is recyclable.
- <sup>13</sup> HP BIOSphere Gen6 features may vary depending on the platform and configuration.
- <sup>14</sup> HP Sure Click requires Intel Core i3, i5, i7 or i9 processors, Windows 10 Pro or Win 10 IoT Enterprise 2019 LTSC; and is not supported on Win 10 IoT Enterprise 2016 LTSB. See [https://bit.ly/2PrlT6A\\_SureClick](https://bit.ly/2PrlT6A_SureClick) for complete details.
- <sup>15</sup> HP Sure Run, Sure Recover & Sure Sense is supported on Win 10 Pro & Win 10 IoT Enterprise 2019 LTSC; but not on Win 10 IoT Enterprise 2016 LTSB.

## Technical Specifications Footnotes

- <sup>1</sup> Not all features are available in all editions or versions of Windows. Systems may require upgraded and/or separately purchased hardware, drivers, software or BIOS update to take full advantage of Windows functionality. Windows 10 is automatically updated, which is always enabled. ISP fees may apply and additional requirements may apply over time for updates. See <http://www.windows.com>.
- <sup>2</sup> Multicore is designed to improve performance of certain software products. Not all customers or software applications will necessarily benefit from use of this technology. Performance and clock frequency will vary depending on application workload and your hardware and software configurations. Intel's numbering, branding and/or naming is not a measurement of higher performance.
- <sup>3</sup> Your product does not support Windows 8 or Windows 7. In accordance with Microsoft's support policy, HP does not support the Windows 8 or Windows 7 operating system on products configured with Intel and AMD 7th generation and forward processors or provide any Windows 8 or Windows 7 drivers on <http://www.support.hp.com>.
- <sup>4</sup> Due to the non-industry standard nature of some third-party memory modules, we recommend HP branded memory to ensure compatibility. If you mix memory speeds, the system will perform at the lower memory speed.
- <sup>5</sup> For storage drives, GB = 1 billion bytes. TB = 1 trillion bytes. Actual formatted capacity is less. Up to 30 GB (for Windows 10) is reserved for system recovery software.
- <sup>6</sup> Wireless cards are optional or add-on features and requires separately purchased wireless access point and internet service. Availability of public wireless access points limited. The specifications for the 802.11ac WLAN are draft specifications and are not final. If the final specifications differ from the draft specifications, it may affect the ability of the notebook to communicate with other 802.11ac WLAN devices.
- <sup>7</sup> Intel® HD Graphics 610: integrated on Celeron™ G3965U; Intel® HD Graphics 620: integrated on 7th gen Core™ i7/i5/i3 processors.
- <sup>8</sup> For full Intel® vPro® functionality, Windows 10 Pro 64 bit, a vPro supported processor, vPro enabled chipset, vPro enabled wired LAN and/or WLAN card and TPM 2.0 are required. Some functionality requires additional 3rd party software in order to run. See <http://intel.com/vpro>
- <sup>9</sup> HP BIOSphere with Sure Start available only on business PCs with HP BIOS. HP BIOSphere Gen 6 requires Intel® 10th generation processors. HP BIOSphere Gen6 features may vary depending on the platform and configuration.
- <sup>11</sup> External power supplies, power cords, cables and peripherals are not low halogen. Service parts obtained after purchase may not be low halogen. Standard configurations meet the low halogen specifications however, some custom feature components may not meet the same Low Halogen standard. A standard configuration includes display head, Engage Pro stand, stability plate and I/O Connectivity Base.
- <sup>12</sup> HP Sure Run, Sure Recover & Sure Sense is supported on Win 10 Pro & Win 10 IoT Enterprise 2019 LTSC; but not on Win 10 IoT Enterprise 2016 LTSB.
- <sup>13</sup> Actual brightness will be lower with touch screen.
- <sup>14</sup> LAN - in Retail I/O Connectivity Base.
- <sup>15</sup> For further details please refer to Quick Specs document.
- <sup>16</sup> HP Sure Click requires Intel Core i3, i5, i7 or i9 processors, Windows 10 Pro or Win 10 IoT Enterprise 2019 LTSC; and is not supported on Win 10 IoT Enterprise 2016 LTSB. See [https://bit.ly/2PrlT6A\\_SureClick](https://bit.ly/2PrlT6A_SureClick) for complete details.
- <sup>17</sup> Wireless access point and Internet service required and sold separately. Availability of public wireless access points limited. Wi-Fi 6 (802.11ax) is backwards compatible with prior 802.11 specs. The specifications for Wi-Fi 6 are draft specifications and are not final. If the final specifications differ from the draft specifications, it may affect the ability of the notebook to communicate with other 802.11ax WLAN devices. Only available in countries where 802.11ax is supported.
- <sup>18</sup> Internal Port is next to the M.2 port
- <sup>20</sup> For the methods outlined in the National Institute of Standards and Technology Special Publication 800-88 "Clear" sanitation method. HP Secure Erase does not support platforms with Intel® Optane™.
- <sup>21</sup> HP 140W port only compatible with the 140W cable included with the product. Cable required for the HP Engage One Pro to operate.
- <sup>22</sup> Minimum one connectivity hub is required
- <sup>23</sup> Percentage of ocean-bound plastic contained in each component varies by product.
- <sup>24</sup> Recycled plastic content percentage is based on the definition set in the IEEE 1680.1-2018 standard.
- <sup>25</sup> ITE Derived Closed Loop Plastic percentage is based on the definition set in the IEEE 1680.1-2018 standard.
- <sup>26</sup> TCO is only offered on the 23.8".

Sign up for updates [hp.com/go/getupdated](https://hp.com/go/getupdated)

© Copyright 2015. Hewlett-Packard Development Company, L.P. The information contained herein is subject to change without notice. The only warranties for HP products and services are set forth in the express warranty statements accompanying such products and services. Nothing herein should be construed as constituting an additional warranty. HP shall not be liable for technical or editorial errors or omissions contained herein.

Microsoft, Windows, and the Windows Logo are trademarks or registered trademarks of Microsoft Corporation in the U.S. and other countries. Intel, Core, Celeron and Intel vPro are trademarks or registered trademarks of Intel Corporation or its subsidiaries in the United States and other countries. Android is a trademark of Google LLC. USB Type-C® and USB-C® are trademarks of USB Implementers Forum. Bluetooth is a trademark of its proprietor and used by HP Inc. under license. DisplayPort™ and the DisplayPort™ logo are trademarks owned by the Video Electronics Standards Association (VESA®) in the United States and other countries.

#us-en#, August 2023

--

