



Eaton Tripp Lite series IsoBreaker™ Managed PDU

Reinforce power reliability in high-density IT

Data centers, micro data centers and other environments with sensitive electronics and little or no tolerance for downtime require a high-density PDU built for enhanced power reliability. The Eaton Tripp Lite series IsoBreaker Managed PDU features first-to-market IsoBreaker technology. In the event of a power surge, this technology trips only the overloaded outlet, instead of the complete bank of outlets, preventing the need to power-off all connected equipment on the bank. The IsoBreaker Managed PDU's sophisticated monitoring and management capabilities, including remote and environmental monitoring, and high outlet density make it ideal in data centers, as well as edge/remote installations and other hot, crowded, remote and less-than-ideal IT spaces.

Key benefits:

Surge isolation

- First-to-market IsoBreaker feature isolates and trips only the outlet with the current surge and keeps the PDU from tripping a complete bank of outlets, protecting the uptime of servers and other critical equipment.

Sophisticated power monitoring

- THDv waveform capture provides precise input readings and accurately reports line noise to better diagnose power problems.
- Individual outlet metering and monitoring ensures proper load balance and detects power problems with greater accuracy.
- IP-based Auto Probe detects lost connectivity and restores service autonomously.

High-density design

- High-density outlet configuration powers up to 36 connected devices from a 0U rack-mount frame.
- Efficient 3-phase power supports 8.6 kW or 12.6 kW loads.

Market-leading management features

- Pre-installed GbE-capable network interface with the latest version of PowerAlert Device Manager firmware (PADM20) provides enhanced remote management capabilities.
- Individual outlet control provides precision power management of specific connected devices.
- Intelligence module is removable and rotatable and can be hot-swapped and upgraded.

Simplified procurement & deployment

- TAA-Compliant for GSA schedule purchases.
- IP consolidation allows assignment of a single IP address to up to 32 cascaded PDUs.



Environmental adaptability

- High-temp operation (up to 140°F/60°C) is ideal for data centers and remote network installations where reliable cooling may not be available.
- Optional EnviroSense2 modules (sold separately) provide a variety of environmental monitoring capabilities.

Product support

Eaton provides free product support via phone, email or chat. If you have a question, Eaton can help.

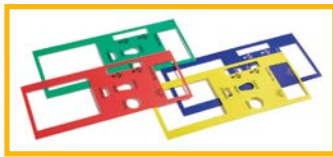
EATON

Powering Business Worldwide

Feature focus

Removable intelligence module with network interface

- 1 Push-button controls
- 2 Color touchscreen LCD provides current levels, environmental data and network information
- 3 2 USB-A ports connect environmental sensors* for remote temperature or temperature/humidity monitoring
- 4 3.5 mm serial port provides a command line interface (CLI) via included DB9 cable
- 5 LED can indicate five different network interface statuses
- 6 Ethernet port supports GbE
- 7 Micro-USB port for direct console access
- 8 Reset button

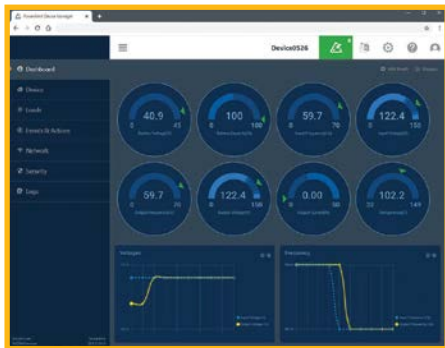


Removable intelligence module overlays (included) help with easy PDU classification by color.

*Uses any of three Tripp Lite by Eaton EnviroSense2 (E2) sensors.

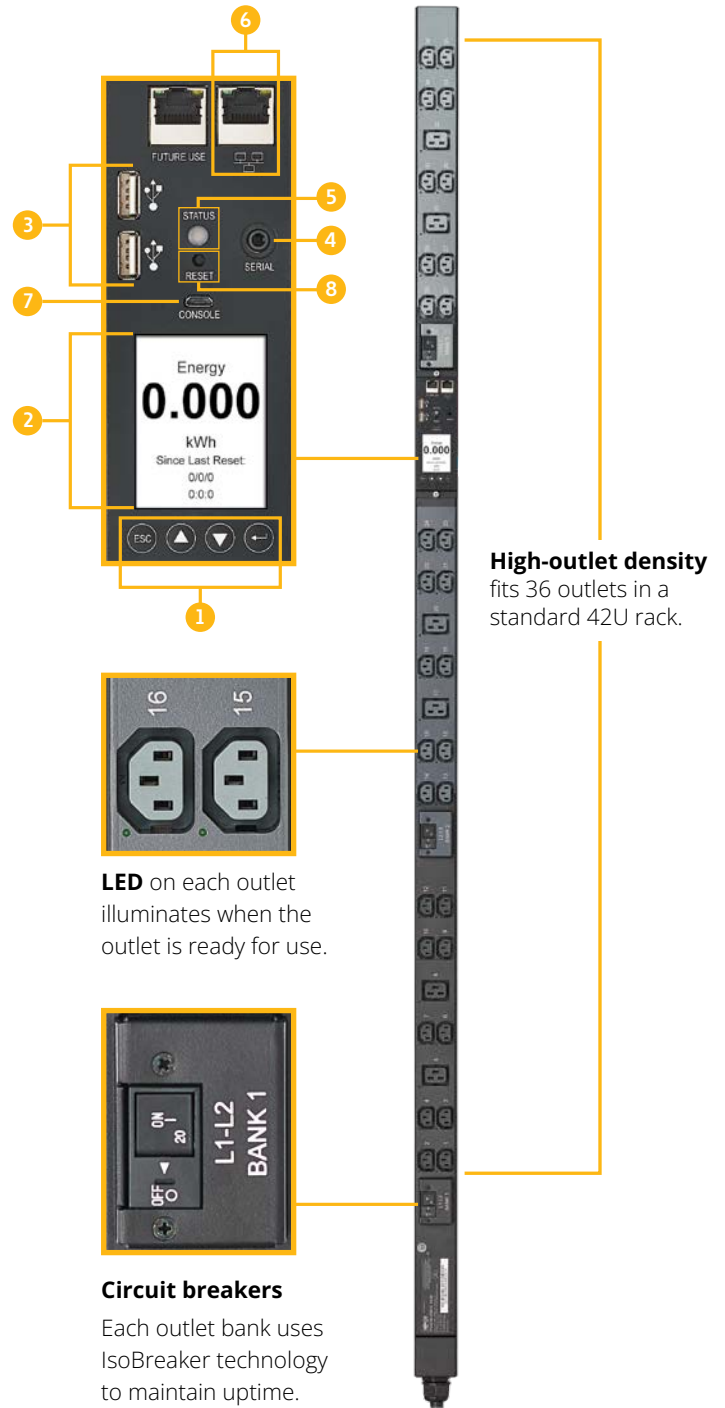
Remote management

Intelligence module supports the latest version of PowerAlert Device Manager firmware (PADM20) for enhanced remote management capabilities.



Convenient installation

Pre-installed toolless mounting buttons allow fast vertical (OU) installation in a rack.



LED on each outlet illuminates when the outlet is ready for use.

Circuit breakers

Each outlet bank uses IsoBreaker technology to maintain uptime.

Specifications

Model	PDU type	Form factor	Input phase	Input voltage	Output capacity	Input plug	Input cord length	Outlets	Dimensions (HxWxD)
PDU3EVS1L1530	Managed	OU (vertical)	3-phase	200; 208; 220; 230; 240	8.6kW	NEMA L15-30P	10 ft. (305 cm)	(30) C13; (6) C19	70 x 2.2 x 3.1 in. (178 x 5.6 x 7.9 cm)
PDU3EVS1L2130	Managed	OU (vertical)	3-phase	200; 208; 220; 230; 240	8.6kW	NEMA L21-30P	10 ft. (305 cm)	(30) C13; (6) C19	70 x 2.2 x 3.1 in. (178 x 5.6 x 7.9 cm)
PDU3EVS1G60	Managed	OU (vertical)	3-phase	200; 208; 220; 230; 240	12.6kW	IEC 309 60A Blue (3P+E)	10 ft. (305 cm)	(30) C13; (6) C19	70 x 2.2 x 3.1 in. (178 x 5.6 x 7.9 cm)
PDU3EVS1H50	Managed	OU (vertical)	3-phase	200; 208; 220; 230; 240	12.6kW	HUBBELL CS8365C 50A	10 ft. (305 cm)	(30) C13; (6) C19	70 x 2.2 x 3.1 in. (178 x 5.6 x 7.9 cm)



Eaton
1000 Eaton Boulevard
Cleveland, OH 44122
United States
Eaton.com

© 2023 Eaton
All Rights Reserved
Printed in USA
BR155053EN / 23-06-030
July 2023

Learn more at
TrippLite.Eaton.com/Isobreaker



Eaton, Tripp Lite, SmartPro and PowerAlert are registered trademarks.

All other trademarks are property of their respective owners.

Follow us on social media to get the latest product and support information.

