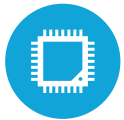




HIGHLIGHTS



Projected Capacitive Touch Screen



3 CPU Options Available (up to i5)



Up to 8GB RAM



Slim and Sleek Finish



Available in 15" or 17" Display

SPECIFICATIONS

PROCESSING

CPU: Intel® Celeron Quad Core J3455 up to 2.3GHz
 i3-7100U up to 2.4GHz Kabylake®
 i5-7300U up to 3.1GHz Kabylake®

System Memory: 1x DDR3-LV SODIMM 4GB (up to 8GB Optional)

Graphics Memory: Intel HD Graphics, 500

LCD PANEL

LCD Size: 15" & 17"

LCD Backlight type: LED

Brightness: 350 nits

Maximum Resolution: 1024 x 768 (15") 1280 x 1024 (17")

Touch Screen Type: Projected Capacitive (USB Interface)

IP Rating: IP65

Screen: Bezel-less True Flat

STORAGE

Solid State Drive: Standard 128 GB SSD
 Optional 256 GB SSD

POWER

Power Supply: 65W +19V power adapter (J3455 only) 90W
 Power Adapter (i3 and i5)

EMC & Safety: FCC / CE Class A, LVD

Operating Temperature: 5°C ~ 35°C (41°F ~ 95°F)

DIMENSIONS

15" with base; 13" H x 14 7/8" W x 9" D (with MSR);

Peripheral Variation (Width only): 15 5/8" (with fingerprint);
 16" (with MSR and Fingerprint)

EXPANSION

M.2 Slot: 1 Optional

I/O PORTS

USB: 2 (USB 2.0) 4 (USB 3.0)

Serial: 3 x RJ45 with DB9 Adapters (COM3, 4 powered with 5V/12V, by BIOS)

Gigabit LAN (10/100/1000): 1

Cash Drawer Port: 1 RJ11 (12V / 24V)

DC Jack: 1

Power Button: 1

PS/2: N/A

VGA: 1

Audio Out: 1 Set (Optional)

Display Port: 1 (Optional)

OPTIONAL PERIPHERALS

MSR USB: Encrypted Option Available

Fingerprint Reader: Steel Coat Crossmatch (USB interface)

Rear LCD: 8" x 15" (Touch Optional)

Customer Display: 2 x 20 VFD Display

Wireless LAN: 802.11 b/g/n/ac

Scanner: 2D Barcode Scanner

PIn Pad Mount



KEY FEATURES

1	15 LED LCD Projected Capacitive Display
2	Optional Rear Customer Display (sizes available)
3	External I/O Ports (15 total)
4	Optional Integrated Fingerprint Reader
5	Optional MSR

OS SUPPORT

J3455: Windows 10 (64 bit) Pro & IOT

i3 & i5: POSREADY 7 (64 bit), 8.1 Embedded Industry Retail Pro (64 bit), Windows 10 IOT & Pro (64 bit)