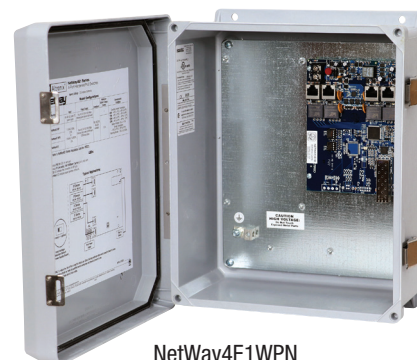


NetWay4E1WPN

4-port PoE+ Hardened Switch



Altronix NetWay4E1WPN Outdoor PoE+ Hardened Switch provides a 1Gb SFP port and four (4) PoE+ (30W) ports. Cameras/edge devices may be located up to 100m from the unit.



NetWay4E1WPN

Key Features

- Four (4) 10/100/1000 Mbps PoE/PoE+ (up to 30W) ports
- External 48-56V UL Listed ITE power supply required
- IEEE 802.3af (15W) and IEEE 802.3at (30W) compliant
- One (1) Gigabit SFP port
- NEMA4/4X, IP66 Rated enclosure for outdoor use
- PoE activity LED indicators
- CE European Conformity
- Lifetime Warranty

Similar products

NetWay4E1WPX	Outdoor 4-port PoE+ Hardened Switch in NEMA 4/4X, IP66-11 enclosure which accommodates stand-by batteries
NetWay4E1WP	Outdoor 4-port PoE+ Hardened Switch in NEMA 4/4X, IP66-11 enclosure
NetWay4E1PL	4-port PoE+ Hardened Switch with Integral Power on a Backplane
NetWay4E1X	Indoor 4-port PoE+ Hardened Switch in NEMA 1 Rated indoor enclosure
NetWay4E1B	4-port PoE+ Hardened Switch (board only)

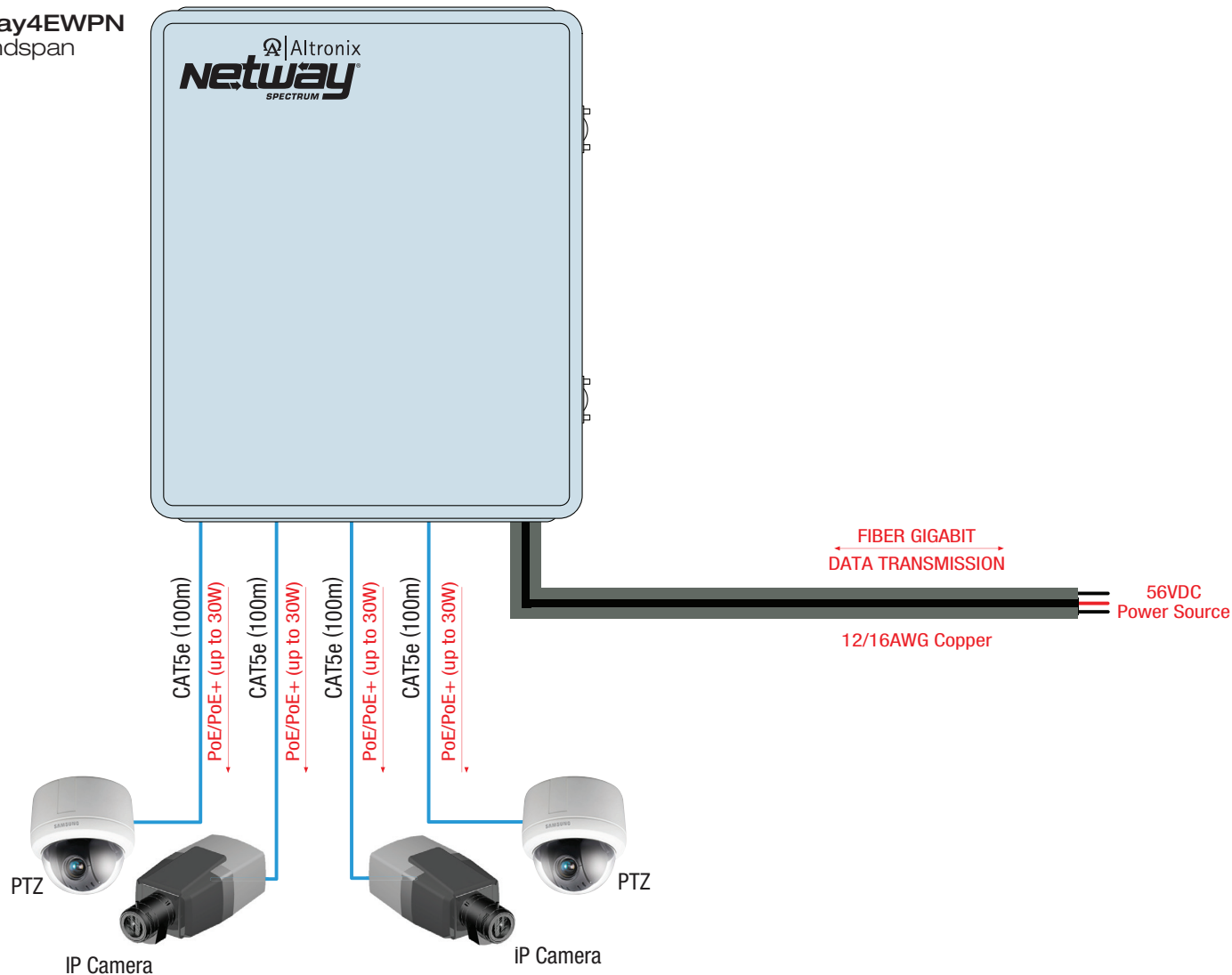
Lifetime Warranty

NetWay4E1WPN 4-port PoE+ Hardened Switch



Typical Applications

NetWay4EWPN
Endspan



Lifetime Warranty

NetWay4E1WPN

4-port PoE+ Hardened Switch



Specifications

Input

Voltage 48V-56V (UL Listed ITE power supply)

Output

Maximum Power Four (4) 10/100/1000 Mbps PoE/PoE+ (up to 30W) ports
IEEE 802.3af (15W) and IEEE 802.3at (30W) compliant
120W max. power
(external power supply required)
Integral surge protection

Fiber Port: One (1) Gigabit SFP port

Indicators (LED)

Individual PoE On LEDs for each port
Individual IP Link status, 10/100Base-T/active LEDs for each port
ALOS LED indicates fiber connection for SFP port
Heartbeat LED indicates proper operation of the unit

Agency Listings

CE European Conformity

Physical and Environmental

Enclosure Dimensions (H x W x D approx.):
13.31" x 11.31" x 5.59" (338.1mm x 287.3mm x 142mm)

NEMA 4/4X, IP66-11 Rated enclosure for outdoor use

Product Weight / Shipping (approx.)

Product Weight: 7.7 lb. (3.49kg)

Shipping Weight: 10.0 lb. (4.54kg)

Temperature

Operating (120W): -40°C to 75°C (-40°F to 167°F)

Storage: -40°C to 85°C (-40°F to 185°F)

Relative Humidity: 85% +/- 5%

Operating Altitude: -304.8 to 2,000m

Accessories (order separately)

SFP Modules - Hot pluggable Transceivers

P1MM Multi-Mode SFP Module for distances up to 550m.

P1SM10 Single-Mode SFP Module for distances up to 10km.

P1AB2K Single Strand SFP Module for distances up to 2km.

P1GCE Copper SFP Module for distances up to 100m.



4-port Ethernet over Fiber Media Converter for applications utilizing composite or conventional cabling

NetWaySP4 -

Unit passes a maximum power up to 120W per port from a Power Supply or Midspan Injector. Four (4) 1Gb SFP ports.

NetWaySP4P -

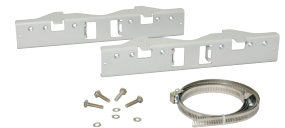
Unit passes a maximum power up to 120W per port from a built-in Power Supply/Charger. Four (4) 1Gb SFP ports.

NetWaySP4P2 -

Unit passes 56VDC power-limited 60W max. per port from a built-in Power Supply/Charger. Four (4) 1Gb SFP ports.

PMK1 - Pole Mount Kit

Designed to simplify installation of outdoor units (WP1, WP3 and WP4). It accommodates 2" - 8" (diameter) poles.



POE60 -

75W Power Supply/Lithium Iron Phosphate Charger

Provides 75W for NetWay Spectrum switches. It also features a built-in charger for Lithium Iron Phosphate batteries.



POE201 -

120W Power Supply/Charger

Provides 120W for NetWay Spectrum switches. It also features a built-in charger for sealed lead acid or gel type batteries.

Lifetime Warranty