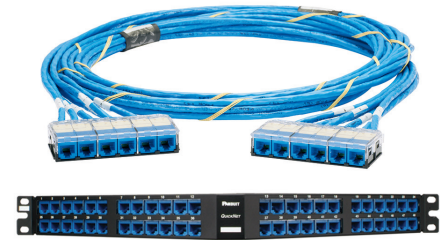


QuickNet™ Copper Cabling System

The QuickNet™ Copper Cabling System provides a custom, pre-terminated cabling solution which meets unique requirements. Fast and simple to install, the system enables quick network deployment, increased reliability, and lower total cost of ownership as compared to field terminated installations. Engineered for maximum design flexibility and high rack density utilization (up to 48-ports in one rack space), the system offers 100% factory tested pre-terminated cable assemblies in custom lengths and configurations. QuickNet™ Angled and Flat Patch Panels accept QuickNet™ Pre-Terminated Cassettes, Patch Panel Adapters, and Blanks, which snap in and out, with one hand, for quick installation.



Key Features

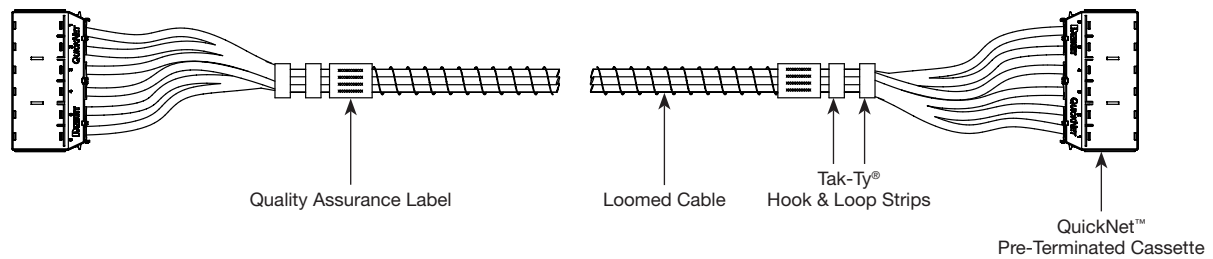
Benefits

Pre-terminated	Controlled factory environment provides consistent network performance while reducing installation time and on-site waste as compared to field-terminated installations
100% factory tested	Eliminates the time and cost associated with on-site testing and ensures verified performance (permanent link test data supplied with each cable assembly)
Wide range of cable types and performance levels	Category 6A UTP/FTP and Category 6 UTP performance levels available in plenum or riser cable fire ratings
Wide range of termination configurations and custom lengths	Cable assemblies allow customization including pre-terminated cassettes, jack modules, modular plugs, and/or unterminated cable options to provide design flexibility for all installations in lengths from 10' to 295
Pre-terminated cassettes	Snap in and out of QuickNet™ Patch Panels and include an integral release tab to ensure easy on-site moves, adds, and changes
Patch panel adapter	Snaps in and out of QuickNet™ Patch Panels and accepts Mini-Com™ Modules for UTP, fiber optic and audio/visual applications
Standard and high-density solution	QuickNet™ Patch Panels in angled and flat designs enable 24 and 48-ports in one rack unit for efficient rack space utilization
Assembly identification	Each cable assembly label includes part number, performance level, and serialized quality assurance number for future traceability
Integrated bonding and grounding	Innovative shielded cassette and shielded jack design provides linear conductive path for proper bonding to QuickNet™ Shielded Metal Patch Panels

Technical Information

- Each QuickNet™ Cable Assembly is factory tested to electrical permanent link specifications
- TX6A™ 10Gig™ Copper Cabling Systems exceed requirements of ANSI/TIA-568-C.2, ISO 110801 Class E_A Edition 2.1, and IEEE 802.3an standards for supporting 10GBASE-T requirements
- TX6500™ and TX6000™ Copper Cabling Systems exceed ANSI/TIA-568-C.2 and ISO 11801 2nd Edition Class E standards
- Jack modules utilize patented Giga-TX™ Technology which optimizes performance by maintaining cable pair geometry and eliminating conductor untwist
- Modular plugs meet all applicable ANSI/TIA-968-A requirements and exceed IEC 60603-7 specifications

QuickNet™ Cable Assembly Ordering Information for North America



Example:

Q	Z	P	B	C	C	B	0	0	0	1	F	0	1	0
1	2	3	4	5	6	7	8	9	10	11	12	13	14	15

Copper QN Trunk, Cat6A, UTP VariMaTriX, Plenum, Blue Cable, End 1 Cassette, End 2 Cassette, Blue Jacks, Standard Pkg, 10 Feet

1 – Q = QuickNet™

2 – Performance Level

- C = Category 6 UTP
- E = Category 6A U/FTP Shielded
- Z = Category 6A UTP Vari-MaTriX

3 – Flame/Smoke Rating

- R = Riser or P = Plenum

4 – Cable Color

- B = Blue or W = White

5 – Termination End 1

- C = Cassette
- J = Jack modules
- P = Modular plugs

6 – Termination End 2

- C = Cassette
- J = Jack modules
- P = Modular plugs
- U = Unterminated

7 – Termination Color Options

Jack Module Color Options

- B = Blue, L = Black, R = Red, W = White, Shielded Jack Modules, choose option L (all Shielded Jack Modules are Black)

Modular Plug and Unterminated Color Options

- X = No color option available, End 1 and End 2 are plug and/or unterminated

8-11 – Serial Code

- 0001** No Variation
- 000B** End 2 Unterminated with loose blue jacks and cassette
- 000Y** End 2 Unterminated with loose black jacks and cassette
- 0013** End 2 Unterminated with loose red jacks and cassette
- 0017** End 2 Unterminated with loose white jacks and cassette

12 – Unit of Measure

- F = Feet

13, 14, 15 – Assembly Length**

- Feet = 010 to 295

QuickNet™ Cable Assembly Ordering Information for North America

QuickNet™ Patch Panel and Accessories Ordering Information

Part Number	Part Description	No. of ^ Rack Spaces	Std. Pkg. Qty.
QAPP24BL	Angled 24-port patch panel	1	1
QAPP48HDBL	Angled 48-port high density patch panel	1	1
QAPP48HDVNSBL	Angled 48-port high density patch panel with pre-printed vertical numbering on each port for switch applications	1	1
QPP24BL	Flat 24-port patch panel	1	1
QPP48HDBL	Flat 48-port high density patch panel	1	1
QPP48HDVNSBL	Flat 48-port high density patch panel with pre-printed vertical numbering on each port for switch applications	1	1
QSP24BL	Flat 24-port shielded all metal patch panel, for use with shielded QuickNet™ Pre-Terminated Cassettes and Shielded Jack Modules	1	1
QSP48HDBL	Flat 48-port shielded all metal patch panel, for use with shielded QuickNet™ Pre-Terminated Cassettes and Shielded Jack Modules	1	1
QASP24BL	Angled 24-port shielded all metal patch panel, for use with shielded QuickNet™ Pre-Terminated Cassettes and Shielded Jack Modules	1	1
QASP48HDBL	Angled 48-port shielded all metal patch panel, for use with shielded QuickNet™ Pre-Terminated Cassettes and Shielded Jack Modules	1	1
QPPAB	Patch panel adapter accepts all Mini-Com™ Modules for multimedia applications	—	1
QPPBBL	Patch panel blank reserves space for future use and promotes proper airflow and cooling	—	1
QPPLC24	Label/label cover kit for 24-port QuickNet™ Patch Panels	—	1
QPPRT	Removal tool allows individual cables to be removed from plug pack without disruption of other network connections	—	1
QPPLD6-X	Lock-in device prevents unauthorized removal of cables from the plug pack	—	10
QPPN6***	QuickNet™ Plug Pack individual housing accepts six RJ45 modular plugs	—	1
QPPNR6S	QuickNet™ Recessed Plug Pack individual housing accepts six RJ45 modular plugs	—	1

^One rack space = 1.75" (44.45mm).

*All connectivity is wired T568B. Category 6 Enhanced Performance level utilizes Panduit® TX6500™ Category 6 UTP Cable.

Permanent link test results shipped with each cable assembly.

**QuickNet™ Patch Panels also available in White (WH).

DISCLAIMER: THE INFORMATION CONTAINED HEREIN IS INTENDED AS A GUIDE FOR USE BY PERSONS HAVING TECHNICAL SKILL AT THEIR OWN DISCRETION AND RISK. BEFORE USING ANY PANDUIT PRODUCT, THE BUYER MUST DETERMINE THE SUITABILITY OF THE PRODUCT FOR HIS/HER INTENDED USE AND BUYER ASSUMES ALL RISK AND LIABILITY WHATSOEVER IN CONNECTION THEREWITH. PANDUIT DISCLAIMS ANY LIABILITY ARISING FROM ANY INFORMATION CONTAINED HEREIN OR FOR ABSENCE OF THE SAME.

WORLDWIDE SUBSIDIARIES AND SALES OFFICES

PANDUIT US/CANADA
Phone: 800.777.3300

PANDUIT EUROPE LTD.
London, UK
Phone: 44.20.8601.7200

PANDUIT SINGAPORE PTE. LTD.
Republic of Singapore
Phone: 65.6305.7575

PANDUIT JAPAN
Tokyo, Japan
Phone: 81.3.6863.6000

PANDUIT LATIN AMERICA
Guadalajara, Mexico
Phone: 52.33.3777.6000

PANDUIT AUSTRALIA PTY. LTD.
Victoria, Australia
Phone: 61.3.9794.9020

For a copy of Panduit product warranties, log on to www.panduit.com/warranty

For more information

Visit us at www.panduit.com

Contact Customer Service by email: cs@panduit.com

or by phone: 800.777.3300

PANDUIT®

©2020 Panduit Corp.
ALL RIGHTS RESERVED.
Printed in the U.S.A.
COCB42--WW-ENG
5/2020