



# Series One Room Kits

For organizations that depend on G Suite and Google Meet to keep ideas and communication flowing, Lenovo and Google offer a turnkey, best-in-class solution that makes outfitting collaboration spaces fast, easy, and cost-efficient.

Google Meet Series One room kits from Lenovo are the only room kits purpose-built in partnership with Google to offer the best Google Meet user experience possible, backed by Lenovo's outstanding service and support. They are also the first room kits of their kind to carry the Series One designation, thanks to unique features like onboard-AI and enterprise-grade components.

Series One room kits include all the components you need to create modern workplace collaboration spaces. Kits are thoughtfully designed with an approachable aesthetic and are available in three different sizes. More importantly, these all-inclusive room kits are easy to shop for, easy to install, and easy to maintain.



Smarter  
technology  
for all





Google Meet

Lenovo



### OPTIONS TO FIT EVERY SPACE

From personal meeting spaces to executive boardrooms, Series One room kits have you covered with purpose-built options for small, medium, and large rooms. The kits arrive ready to go, right out of the box with compute system, controller, smart camera, cables, smart audio bar, and mic pod(s)<sup>1</sup>. Plus, the included mounting options allow you to install the compute on or under a table, or behind a display, to keep it out of sight, yet easily accessible.



### LOOKS AS GOOD AS IT SOUNDS

With their approachable design, Series One room kits from Lenovo complement the modern workspace aesthetic. Kits are available in two inviting colors—Chalk and Charcoal—for the look that works best within your space. And the beautiful design is matched by inherent intelligence. Advanced noise cancellation technology is processed through Google’s Edge TPU to offer the highest quality audio to meeting participants. The 4K-capable AI cameras deliver smoother pan and zoom movements resulting in a better visual experience. The touch controller features a user-friendly interface that makes joining meetings and sharing content easy and intuitive. Users can even join and leave video meetings, dial phone numbers, and more with Hey Google voice commands for touchless control.



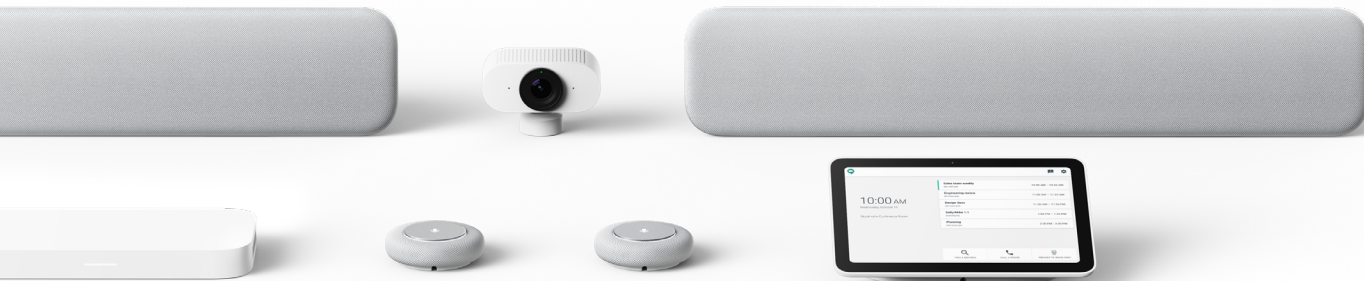
### EASY TO INSTALL, EASY TO MANAGE

As the first kits for Google Meet incorporating Power over Ethernet (PoE), Series One room kits from Lenovo are easier and more cost-effective to install than almost any other option. Here’s why: With power and network combined in one Ethernet cable, there are fewer cables to run and less clutter under or on the table. In addition, PoE installations can be completed faster than traditional deployments. And Series One room kits from Lenovo are managed through the G Suite admin console, something most IT teams are already skilled at using.



### SUPPORT YOU CAN DEPEND ON

In addition to providing a rich, immersive meeting experience, Series One room kits from Lenovo are backed by a 3-year Lenovo Premier Support warranty. Additional coverage is available through Lenovo’s optional Smart Office Professional Services, which provide personalized support every step of the way.



## WHAT’S IN THE BOX?

### small room kit

Perfect for huddle rooms and small conference rooms, this kit comes with compute system, smart camera, smart audio bar, remote control, and high-quality cabling.



### medium room kit

Ideal for medium-sized conference rooms, this kit comes with compute system, smart camera, smart audio bar, mic pod, touch controller, and high-quality cabling.



### large room kit

Designed for large conference rooms or boardrooms, this kit comes with compute system, smart camera XL, smart audio bar, add-on audio bar, two mic pods, touch controller, and high-quality cabling.



<sup>1</sup>See sidebar for components included in each kit size.



## compute system

### MOUNTING OPTIONS

Wall mount and table stand

### CPU

Intel i7-8550U

### MEMORY

4GB RAM

### STORAGE

128GB SSD

### WIRELESS DATA NETWORK

WiFi (802.11 AC) 2.4GHz/5GHz  
Bluetooth 4.2, Ethernet (PoE)

### PORTS

2x HDMI 1.4 output with CEC  
1x HDMI 1.4 input video port  
5x RJ45 Ethernet ports  
3x Type-A and 1x Type-C USB ports  
1x headphone jack w/ mic support (3.5 mm)

### DIMENSIONS (L X W X H)

135 x 284 x 29 mm



## smart camera

### smart camera

#### IMAGE

12 MP 1/2.3" CMOS Sensor  
Up to 1080p @ 30 fps  
f/2.8 aperture

#### OPTICS

Ultra-wide angle glass optics  
120° horizontal field of view

#### CONNECTION

Ethernet (PoE)

#### DIMENSIONS (L X W X H)

84 x 107 x 42 mm

### smart camera xl (included in large kits only)

#### IMAGE

20.30 MP 1" CMOS Sensor  
Up to 1080p @ 30 fps  
f/2.9 aperture

#### OPTICS

Wide angle glass optics  
95° horizontal field of view

#### CONNECTION

Ethernet (PoE)

#### DIMENSIONS (L X W X H)

84 x 122 x 52 mm



## smart audio bar

### smart audio bar

#### SPEAKER

20W RMS power  
80Hz-24kHz frequency response

#### MICROPHONE

8 element, linear beamforming array  
100Hz-24kHz pickup

#### AUDIO PERFORMANCE

AEC, ANC, and TrueVoice™ multi-channel noise cancellation

#### CONNECTIONS

1x USB-C with USB 2.0 UAC  
1x stereo analog RCA output (for assistive listening devices)  
1x Ethernet (PoE)  
2x RJ45 (daisy chain output data and power)

#### RANGE

Optimal pickup range of up to 4m

#### DIMENSIONS (L X W X H)

95 x 705 x 133 mm

### add-on audio bar (included in large kits only)

#### SPEAKER

20W RMS power  
80Hz-24kHz frequency response

#### MICROPHONE

8 element, linear beamforming array  
100Hz-24kHz pickup

#### RANGE

Optimal pickup range of up to 4m

#### DIMENSIONS (L X W X H)

95 x 705 x 133 mm



## mic pod

(included in medium and large kits only)

**MICROPHONE**

8 element, circular beamforming array  
100Hz-24kHz pickup

**CONNECTIONS**

1x Daisy Chain input port for data and power (up to 4 mic pods)  
1x Daisy Chain output port for data and power (up to 4 mic pods)

**RANGE**

Optimal pickup range of up to 2m

**DIMENSIONS (L X W X H)**

95 x 95 x 30 mm



## controller

**touch controller**  
(included in medium and large kits only)

**DISPLAY**

10.1" anti-smudge touchscreen  
Color sensor  
Orientation sensor

**RESOLUTION**

1280 x 800 x 3(RGB) LCD  
with Optically Bonded multi-touch screen

**CONNECTION**

1x 10Gb PoE connector

**DIMENSIONS (L X W X H)**

164 x 245 x 91 mm



**remote control**  
(included in small kits only)

**REMOTE**

2.4 RF remote

**KEYPAD**

10 keys (Navi Key, End Key, and Upper Keys)  
QWERTY key: 38 keys

**BATTERY**

Rechargeable lithium ion with USB-powered docking station

**DIMENSIONS (L X W X H)**

130 x 45 x 14 mm



## optional services

Lenovo's Smart Office Professional Services offer personalized, end-to-end support to help you make the most of your technology investment.

**ASSESS**

Lenovo is here to help identify any issues that could sidetrack your deployment by providing a detailed assessment of potential red flags and a follow-up report.

**DEPLOY**

From virtual deployment installation to integration assistance, Lenovo ensures your devices function optimally in your office environment.

**MAINTAIN**

Our easy-to-follow do's and don't's, remote check-ins, and assistance with ongoing security patches and updates take the stress out of updates and device changes.

**TRAIN**

Lenovo helps instruct all your audiences—IT and AV support teams, end users, and executives—on how to fully take advantage of your new technology.

**ONSITE**

Lenovo provides white glove treatment through a dedicated, on-site specialist who can complete physical set-up, installation, configuration, and device troubleshooting.

©2020 Lenovo. All rights reserved. These products are available while supplies last. Prices shown are subject to change without notice. For any questions concerning price, please contact your Lenovo Account Executive. Lenovo is not responsible for photographic or typographic errors. Warranty: For a copy of applicable warranties, write to: Warranty Information, 500 Park Offices Drive, RTP, NC 27709, Attn: Dept. ZPYA/B600. Lenovo makes no representation or warranty regarding third-party products or services. Trademarks: Lenovo and the Lenovo logo are trademarks or registered trademarks of Lenovo. Intel, the Intel logo, Intel Inside, Intel Core, and Core Inside are trademarks of Intel Corporation in the U.S. and/or other countries. ©2020 Google LLC. All rights reserved. Google and the Google logo are registered trademarks of Google LLC. Other company, product, and service names may be trademarks or service marks of others.