



P/N: 15G065165006AK V1.1

Quick Installation Guide

X570D4U-2L2T/BCM | X570D4U-2L2T | X570D4U



X570D4U-2L2T/BCM



X570D4U-2L2T



X570D4U

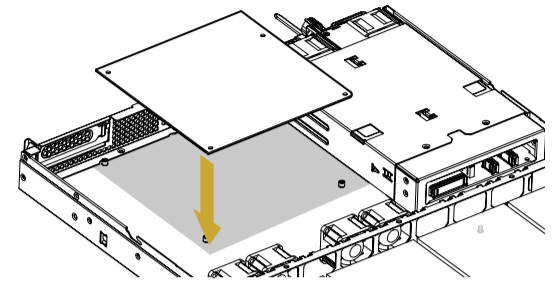
The server board User's Manual is available for download from the ASRock Rack's official website at <http://www.asrockrack.com>.

Take note of the following precautions before you install server board components or change any server board settings.

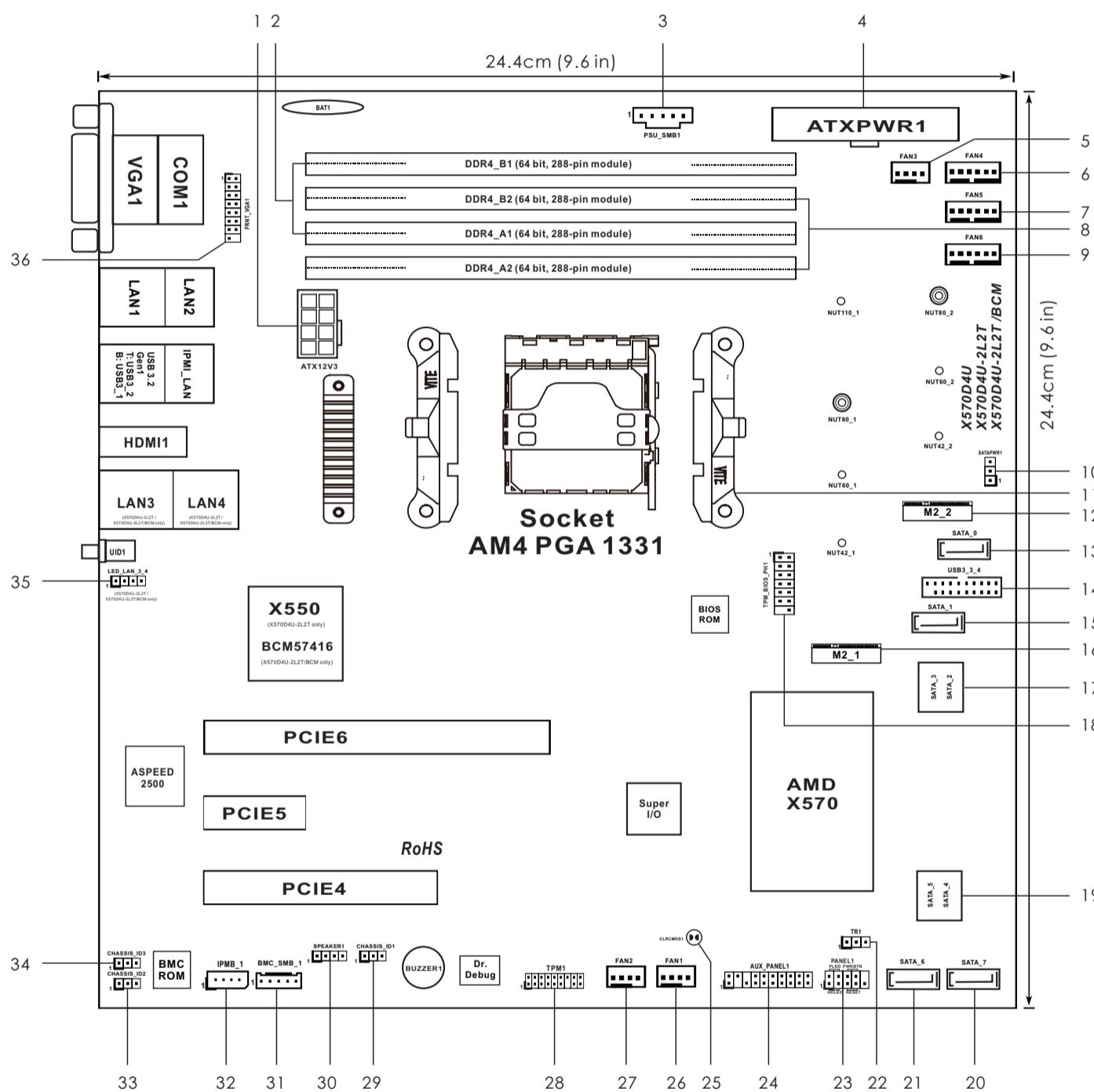
1. Unplug the power cord from the wall socket before touching any components.
2. To avoid damaging the server board's components due to static electricity, NEVER place your server board directly on the carpet or the like. Also remember to use a grounded wrist strap or touch a safety grounded object before you handle the components.
3. Hold components by the edges and do not touch the ICs.
4. Whenever you uninstall any component, place it on a grounded anti-static pad or in the bag that comes with the component.
5. When placing screws into the screw holes to secure the server board to the chassis, please do not over-tighten the screws! Doing so may damage the server board.

1 Install the Server Board

- 1 Insert the server board into the chassis.
- 2 Affix the screws clockwise into the mounting holes in all of the corners of the server board.
Do not over-tighten the screws



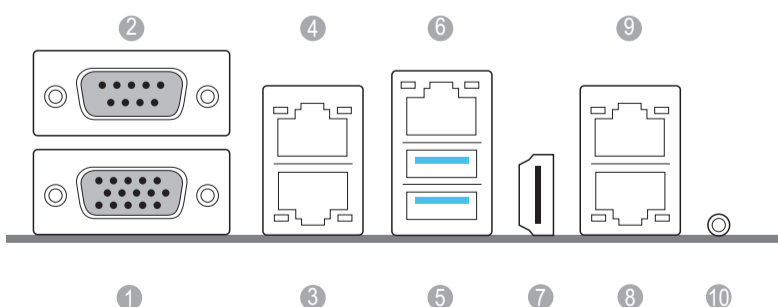
2 Motherboard Layout



- 1 ATX 12V Power Connector (ATX12V3)
- 2 2 x 288-pin DDR4 DIMM Slots (DDR4_A1, DDR4_B1, Blue)
- 3 PSU SMBus Header (PSU_SMB1)
- 4 ATX Power Connector (ATXPWR1)
- 5 System Fan Connector (4-pin) (FAN3)
- 6 System Fan Connector (6-pin) (FAN4)
- 7 System Fan Connector (6-pin) (FAN5)
- 8 2 x 288-pin DDR4 DIMM Slots (DDR4_A2, DDR4_B2, White)
- 9 System Fan Connector (6-pin) (FAN6)
- 10 SATA DOM Power Connector (SATAPWR1)
- 11 AM4 PGA 1331 Socket
- 12 M.2 Socket (M2_2) (Type 2242 / 2260 / 2280)
- 13 SATA3 DOM Connector (SATA_0), Red
- 14 USB 3.2 Gen1 Header (USB3_3_4)
- 15 SATA3 Connector (SATA_1)
- 16 M.2 Socket (M2_1) (Type 2242 / 2260 / 2280 / 22110)
- 17 SATA3 Connector (SATA_3)(Upper), SATA3 Connector (SATA_2)(Lower)
- 18 TPM-SPI Header (TPM_BIOS_PH1)
- 19 SATA3 Connector (SATA_5)(Upper), SATA3 Connector (SATA_4)(Lower)
- 20 SATA3 Connector (SATA_7)
- 21 SATA3 Connector (SATA_6)
- 22 Thermal Sensor Header (TR1)
- 23 System Panel Header (PANEL1)
- 24 Auxiliary Panel Header (AUX_PANEL1)
- 25 Clear CMOS Pad (CLRMOSE1)
- 26 System Fan Connector (4-pin) (FAN1)
- 27 System Fan Connector (4-pin) (FAN2)
- 28 TPM Header (TPM1)
- 29 Chassis ID1 Jumper (CHASSIS_ID1)*
- 30 Speaker Header (SPEAKER1)
- 31 BMC SMBus Header (BMC_SMB_1)
- 32 Intelligent Platform Management Bus Header (IPMB_1)
- 33 Chassis ID2 Jumper (CHASSIS_ID2)*
- 34 Chassis ID3 Jumper (CHASSIS_ID3)*
- 35 Front LAN LED Connector (LED_LAN_3_4) (X570D4U-2L2T / X570D4U-2L2T/BCM only)
- 36 Front VGA Header (FRNT_VGA1)

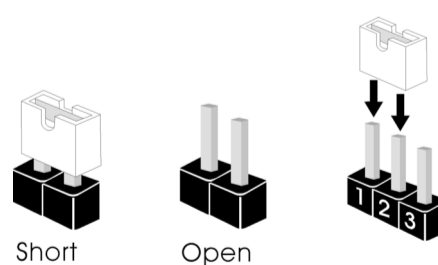
*Reserved for BOM option.

3 I/O Panel



No.	Description	No.	Description
1	VGA Port (VGA1)	6	LAN RJ-45 Port (IPMI_LAN1)
2	Serial Port (COM1)	7	HDMI Port
3	1G LAN RJ-45 Port (LAN1)	8	10G LAN RJ-45 Port (LAN3) (X570D4U-2L2T / X570D4U-2L2T/BCM only)
4	1G LAN RJ-45 Port (LAN2)	9	10G LAN RJ-45 Port (LAN4) (X570D4U-2L2T / X570D4U-2L2T/BCM only)
5	USB 3.2 Gen2 Ports (USB3_1_2)	10	UID Switch (UID1)

4 Jumper Cap On/Off

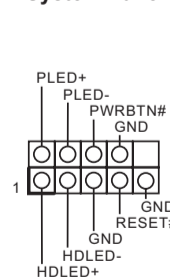


When the jumper cap is placed on the pins, the jumper is "Short". If no jumper cap is placed on the pins, the jumper is "Open".

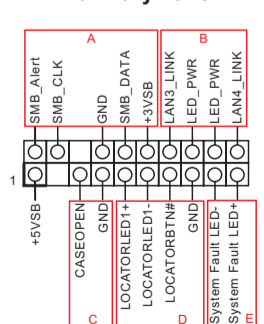
The illustration shows a 3-pin jumper whose pin1 and pin2 are "Short" when a jumper cap is placed on these 2 pins.

5 Headers

System Panel



Auxiliary Panel



The terms HDMI® and HDMI High-Definition Multimedia Interface, and the HDMI logo are trademarks or registered trademarks of HDMI Licensing LLC in the United States and other countries.

