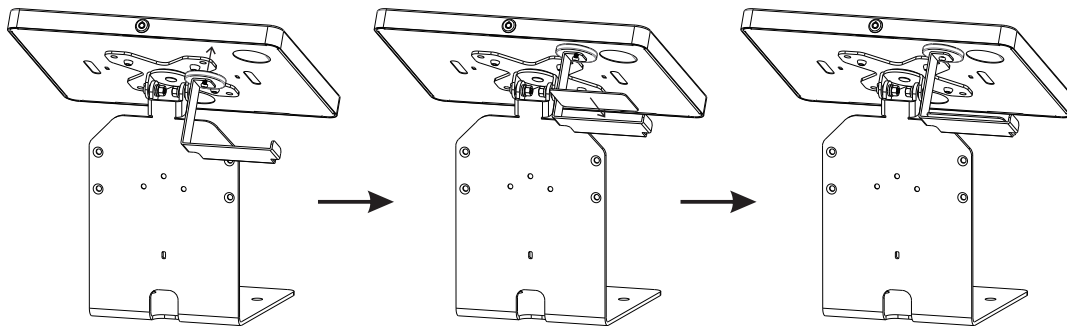
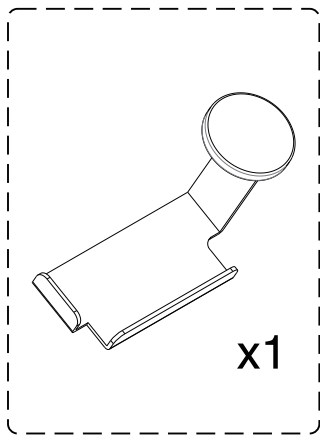




ID and Card Holder with Magnetic Attachment for Card Scanning (Black)

INSTRUCTION MANUAL

ADD-IDMAG



1. Place ID/Card holder on the back of the enclosure with the arm directly in front of the camera opening as shown . Adjust as needed when doing test shots with the back tablet camera.



36 Taaffe Place Brooklyn, NY 11205



support@ctadigital.com



778-991-0169



www.ctadigital.com