



Recycle Disassemble Instruction (Dismantled Information)

**Requirements according to ANNEX VII of DIRECTIVE 2012/19/EU
on waste electrical and electronic equipment (WEEE)**

Materials and components with hazardous content

LCDs may contain hazardous substances like Pb and BFRs which are covered by exemptions under the RoHS directive. However, the majority is present in the printed circuit boards assembly. In order to reduce emissions as much as possible, a complete disposal of the old appliance is required. This treatment may only be performed in authorized handling plants.








Product Name: LCD Monitor

Model No.: PD2725U





Disassembly Tools

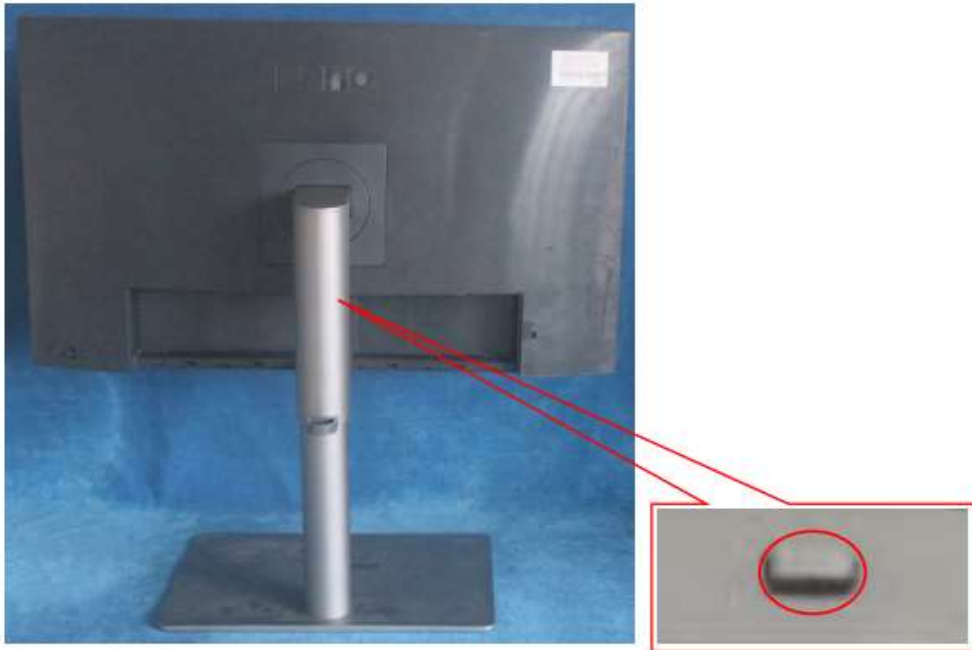
Tool	picture
Philips Screwdriver for M3 Screw	 A Philips screwdriver with a red handle and a silver shaft, lying horizontally on a light brown wooden surface.
Nosed Pliers	 A pair of red-handled nose pliers with long, thin jaws, lying horizontally on a light brown wooden surface.
Diagonal Cutting Pliers	 A pair of red-handled diagonal cutting pliers with short, angled jaws, lying horizontally on a light brown wooden surface.
Slotted screwdriver	 A slotted screwdriver with a green handle and a silver shaft, lying horizontally on a light brown wooden surface.
Six Point Sockets	 A six-point socket screwdriver with a yellow handle and a silver shaft, lying horizontally on a light brown wooden surface.
Philips Screwdriver for M2.5 Screw	 A Philips screwdriver with a red handle and a silver shaft, lying horizontally on a light brown wooden surface.
Knife	 A folding knife with a silver handle and a black blade, lying horizontally on a light brown wooden surface.



Disassembly process

1) Remove the stand base assy

Push the button to remove the stand base assy.



The stand assy and the base assy.





2) Remove the rear cover

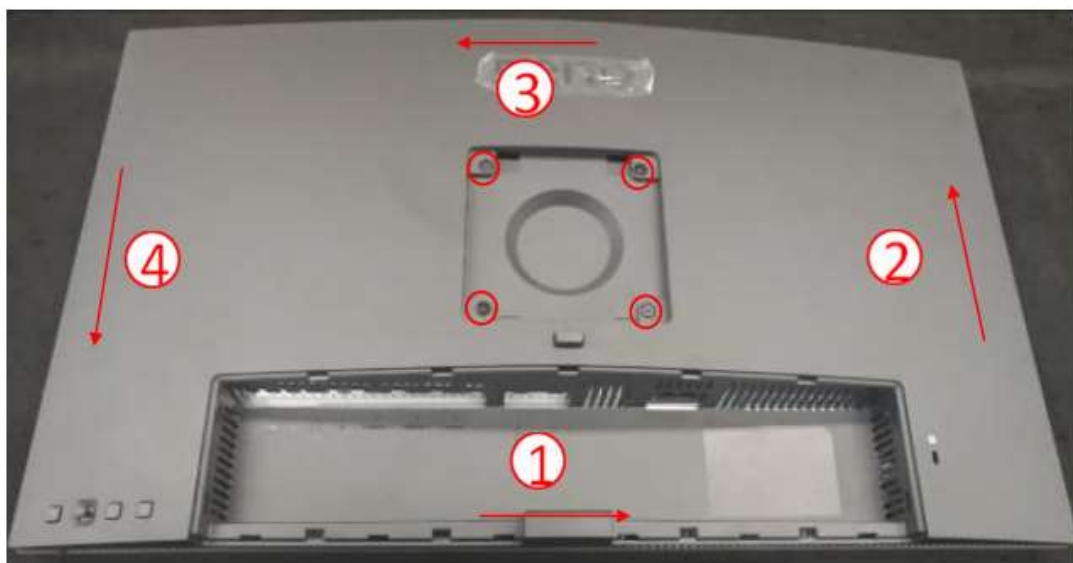
Remove the screws and pull apart middle frame & rear cover.

Note: Be careful, the Middle frame CLIP is easy to break. Bellow picture for reference.

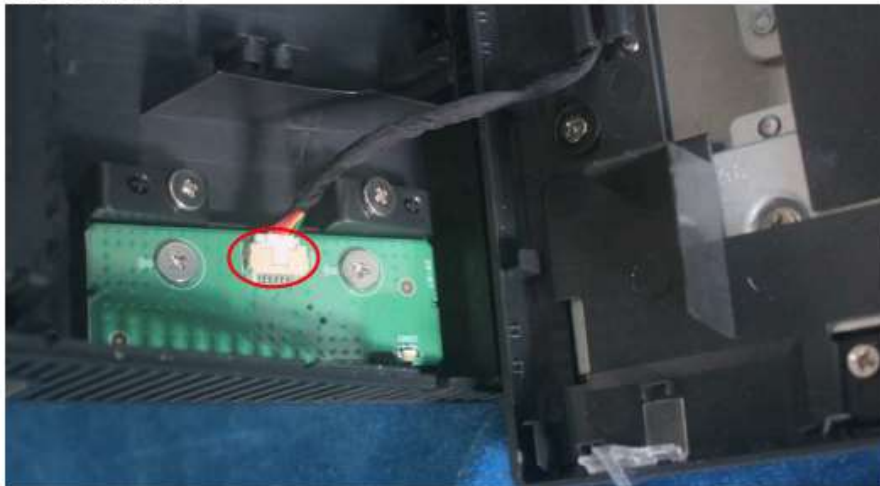
Use a tool (like picture using) to open all latches.



The figure of the tool:

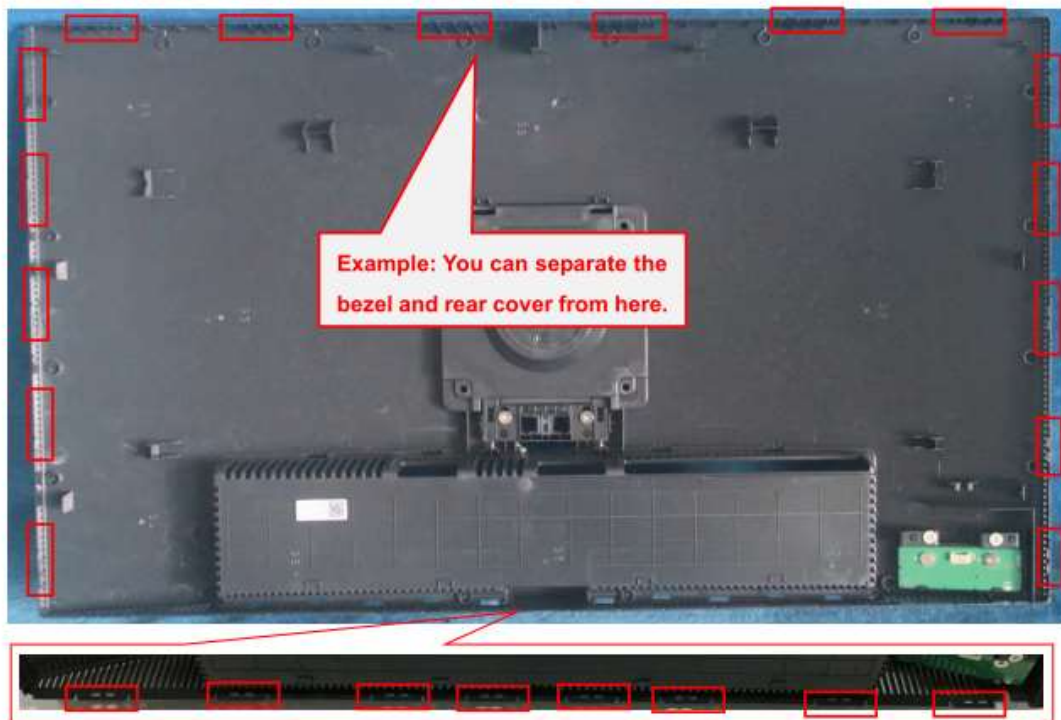


Disconnect the connector.





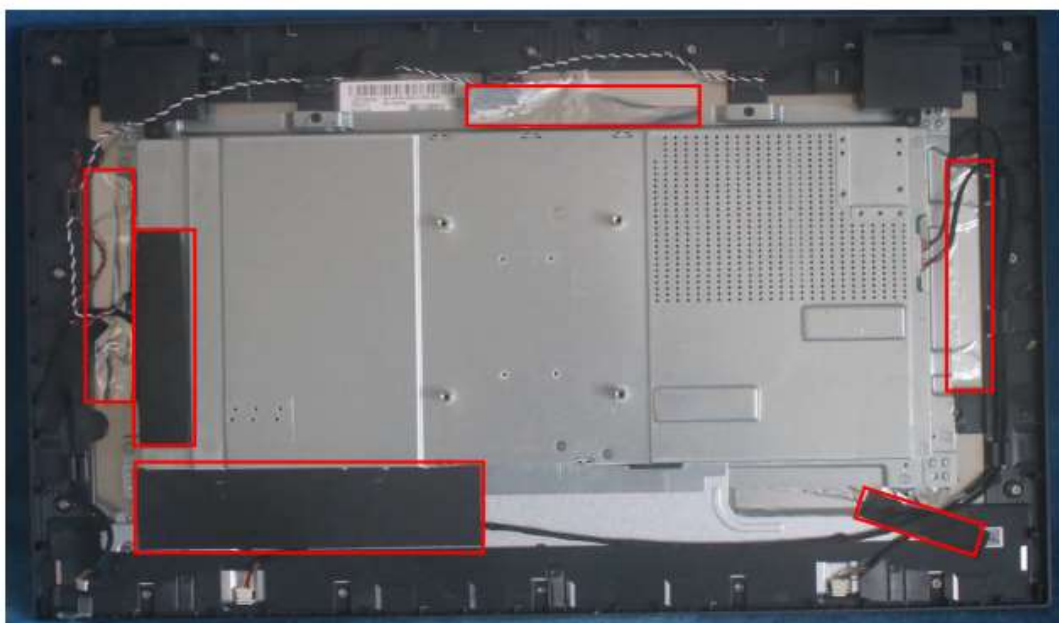
Note: The positions of the clips on the rear cover are as follow. There are some small gaps between CLIPS.
It's suggested to separate bezel and rear cover from the gaps.



3) Remove the mainframe from the panel

Remove the Mylar, black rubberized fabric and aluminum foil.

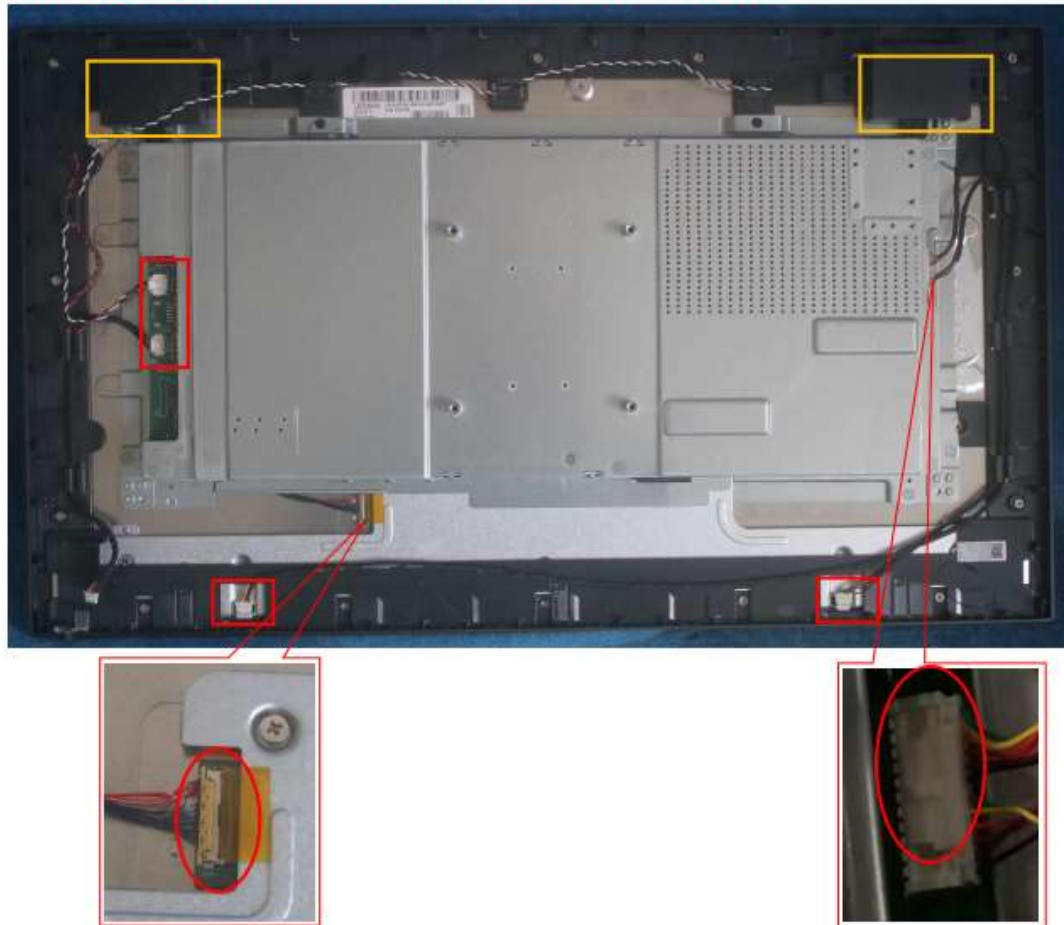
Note: When you assembled the LCD, you must tidy the wire as follow picture.



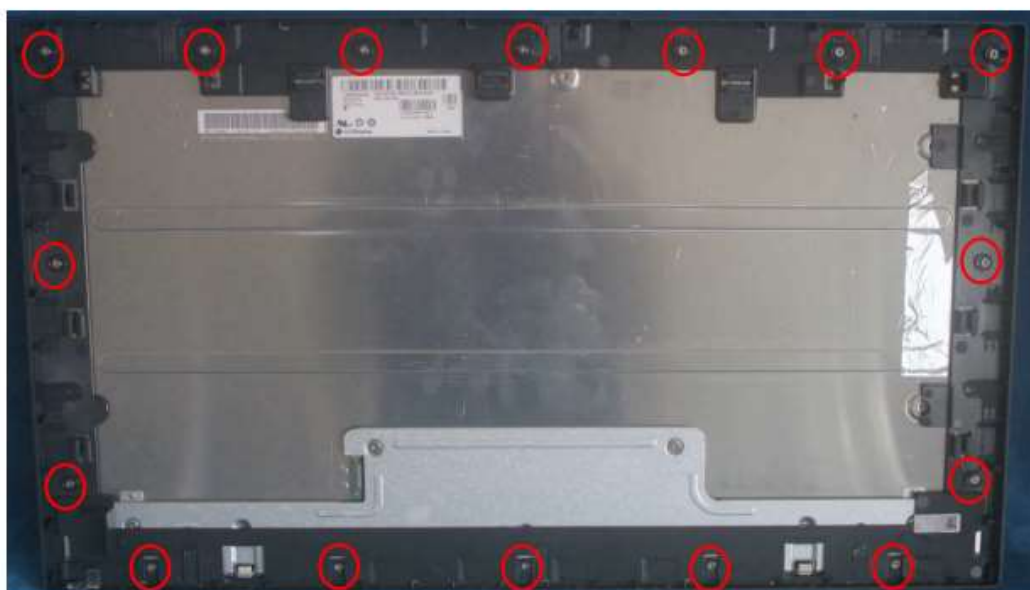


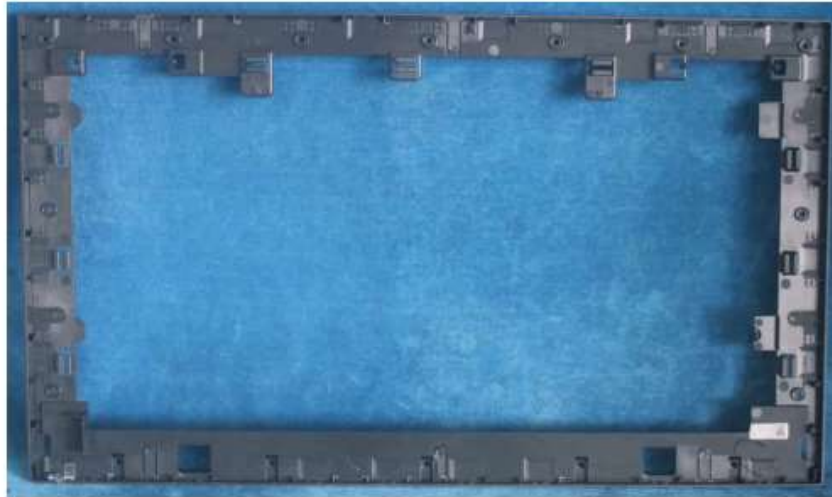
Pull out the wires to remove the middle frame and the speakers.

Note: When you assembled the LCD, you must tidy the wires as follow picture.



4) Remove the screws to separate the panel and the Middle Frame.





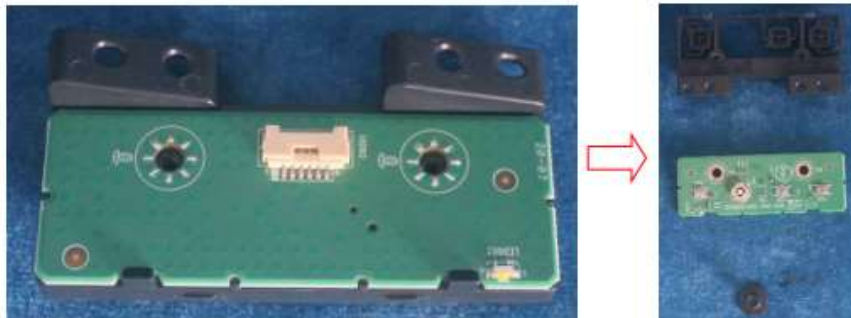
Remove the panel

Note: Be course the panel is easy to broken, when we remove the panel, we should hold the iron on the panel edge use two hands at the same time, and should avoid touching the panel surface.



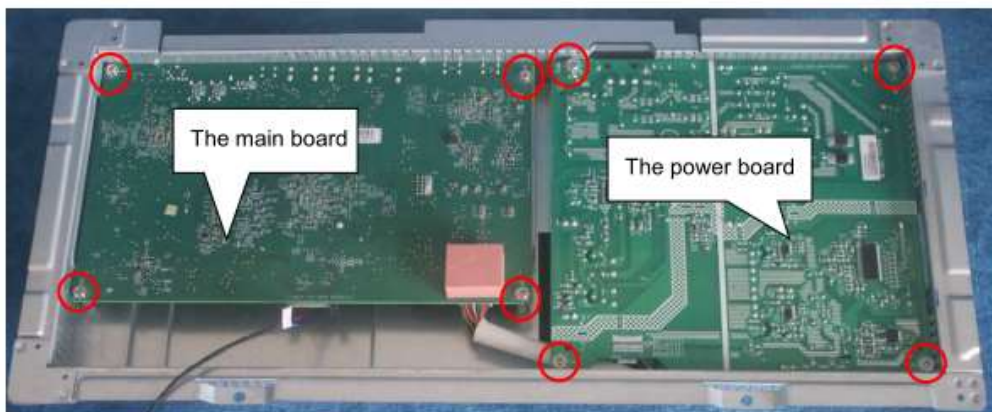
5) Remove the screws to the key board.



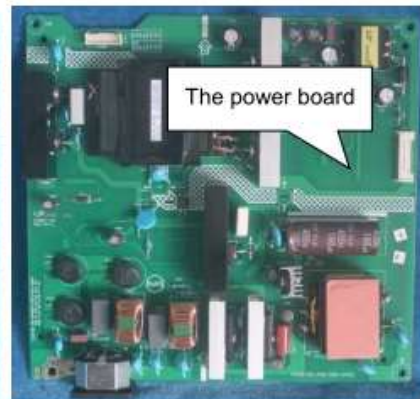
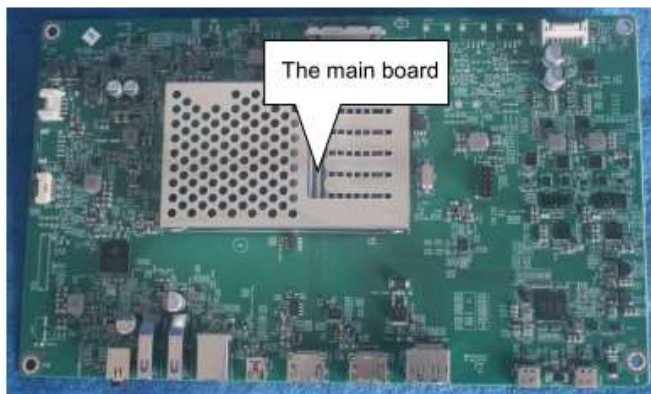


6) Remove the boards from the main frame.

Remove the main board and power board.



The main board and the power board





Disassembly Time

Total time: 30 minutes