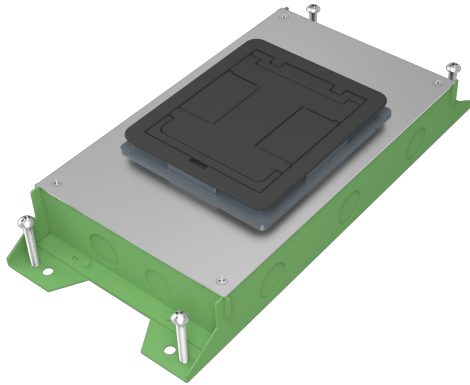




Wiremold
RFBA 2-Gang Shallow Floor Box - On Grade
Part No. RFBA2R25OG



Your go-to floor box just got better. Resource RFB Series Floor Boxes are designed for maximum efficiency throughout an entire building, bringing versatile recessed activations for power and data services to open space areas or directly to workstations. No matter what size you choose, components and accessories work across the entire line interchangeably. Simply mix-and-match as needed for your project. Improved wire and cable routing makes wire pulling much easier in adjacent compartments and around corners. Available in 2-, 4-, 6- and 10-gang models with a variety of covers, colors and profiles.* Installs in tile, stone, carpet, terrazzo, wood and polished concrete. Perfect for many applications, including schools, financial institutions, commercial office buildings, hospitality and residential.

Features & Benefits

One consistent design

Mix-and-match Resource RFBA Series Floor Boxes of any size with interchangeable components. Makes every project installation quick and efficient.

Improved wire and cable routing

Allows for easier wire pulling in adjacent compartments and around corners, reducing the overall cost for most cabling requirements.

Removable dividers post-pour

Fully adjustable before and after concrete pour.

Universal sized conduit feed

Meets all requirements for each box. 2- and 4-gang shallow boxes accept a 1" conduit feed, while all standard boxes accept a 2" conduit feed.

Two finishes

Every box configuration is available in either a standard zinc-plated construction or a lightweight "slab-on-grade" finish with fusion-bonded epoxy corrosion resistant paint.

Adapts to most power and communications needs

Common mounting plates can be used for any of the Resource RFB Series Floor Boxes. Reduces overall life cycle cost.

Specifications

General Info

| | | | |
|---------------------|----------|-----------------------|--------------|
| Product Line | Wiremold | UPC Number | 786564105305 |
| Country Of Origin | Mexico | Installation Location | On Grade |
| Number of Knockouts | 14 | Application Sector | Commercial |
| Standard | UL514 | | |

Dimensions

| | | | |
|------------------|--------|-------------------|----------|
| Product Depth US | 2.5 in | Product Length US | 17.75 in |
| Knockout Size | 1 in | | |

Listing Agencies / 3rd Party Agencies

| | | | |
|---------------------|------|--------------|-----|
| cULus ListingNumber | QCIT | cULus Listed | Yes |
|---------------------|------|--------------|-----|

Buy American Act Compliance

| | |
|-------|-----|
| NAFTA | Yes |
|-------|-----|

Additional Information

| | | | |
|-----------------|-----|---|-----|
| RoHS Conformant | Yes | Product Has Potential to Contribute to LEED | Yes |
|-----------------|-----|---|-----|

| | |
|-------------------------------|-----|
| Product Environmental Profile | Yes |
|-------------------------------|-----|

Technical Information

| | | | |
|------------|----------|-----------------|---|
| Floor Type | Concrete | Number of Gangs | 2 |
|------------|----------|-----------------|---|

| | | | |
|------------------------|---|--------|----|
| Number of Compartments | 2 | Plenum | No |
|------------------------|---|--------|----|

| | |
|----------------|--------|
| Indoor/Outdoor | Indoor |
|----------------|--------|
