

Installation Guide

Ultra High-Density Fiber Panel All-In-One Solution

N48M/N48S 1U Series



Este guía está disponible en español en la página de Tripp Lite: tripplite.com/support

Ce guide est disponible en français sur le site Web de Tripp Lite : tripplite.com/support

Русскоязычная версия настоящего краткого руководства представлена на веб-сайте компании Tripp Lite по адресу: tripplite.com/support

Dieses Handbuch ist in deutscher Sprache auf der Tripp Lite-Website verfügbar: tripplite.com/support

WARRANTY REGISTRATION

Register your product today and be automatically entered to win an ISOBAR® surge protector in our monthly drawing!

tripplite.com/warranty



1111 W. 35th Street, Chicago, IL 60609 USA • tripplite.com/support

Copyright © 2021 Tripp Lite. All rights reserved.

Installation

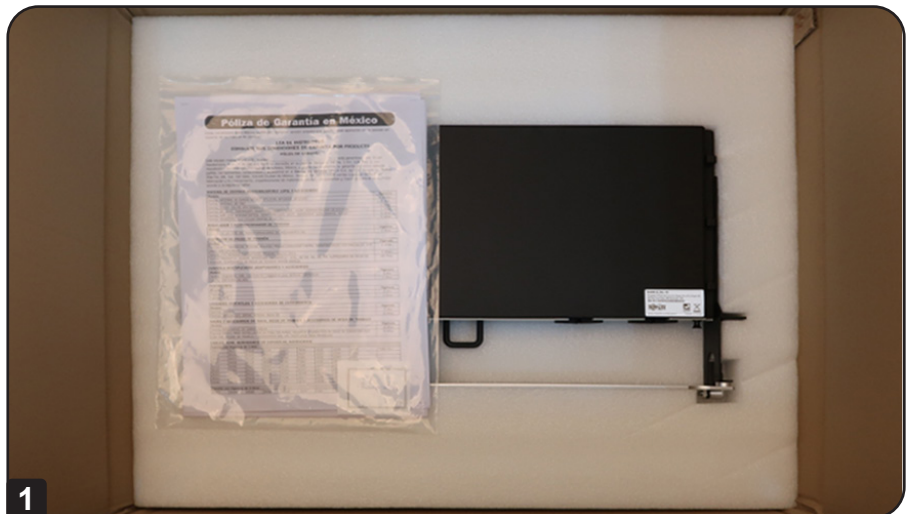
Materials Needed:

- Phillips Screwdriver
- Rack-Mounting Screws

Connector Type:

Fiber Panel Model	Connector 1	Connector 2
N48S-8L2L-10	LC/UPC Male	LC/UPC Male
N48S-6L8L-10	LC/UPC Male	LC/UPC Male
N48S-4L16L-10	LC/UPC Male	LC/UPC Male
N48S-2L24L-10	LC/UPC Male	LC/UPC Male
N48S-2L24L-20	LC/UPC Male	LC/UPC Male
N48S-4M3X8M-10	MTP-MPO/APC Female	MTP-MPO/APC Female
N48S-2M3X8M-20	MTP-MPO/APC Female	MTP-MPO/APC Female
N48S-4M8L4-10	MTP-MPO/APC Female	LC/UPC Male
N48S-2M8L4-20	MTP-MPO/APC Female	LC/UPC Male
N48S-2M24L12-10	MTP-MPO/APC Female	LC/UPC Male
N48S-2M24L12-20	MTP-MPO/APC Female	LC/UPC Male
N48M-8L2L-10	LC/PC Male	LC/PC Male
N48M-6L8L-10	LC/PC Male	LC/PC Male
N48M-4L16L-10	LC/PC Male	LC/PC Male
N48M-2L24L-10	LC/PC Male	LC/PC Male
N48M-2L24L-20	LC/PC Male	LC/PC Male
N48M-4M3X8M-10	MTP-MPO/PC Female	MTP-MPO/PC Female
N48M-2M3X8M-20	MTP-MPO/PC Female	MTP-MPO/PC Female
N48M-4M8L4-10	MTP-MPO/PC Female	LC/PC Male
N48M-2M8L4-20	MTP-MPO/PC Female	LC/PC Male
N48M-2M24L12-10	MTP-MPO/PC Female	LC/PC Male
N48M-2M24L12-20	MTP-MPO/PC Female	LC/PC Male

- 1 Open the box and unpack its contents.



Installation

- 2 Place the panel into position in an enclosure or open-frame rack. Align the mounting holes and use rack-mounting screws (2 per side, not included) to secure the unit.



- 3 To access the LC or MTP-MPO cables, untighten two snap rivets and pull out the tray.

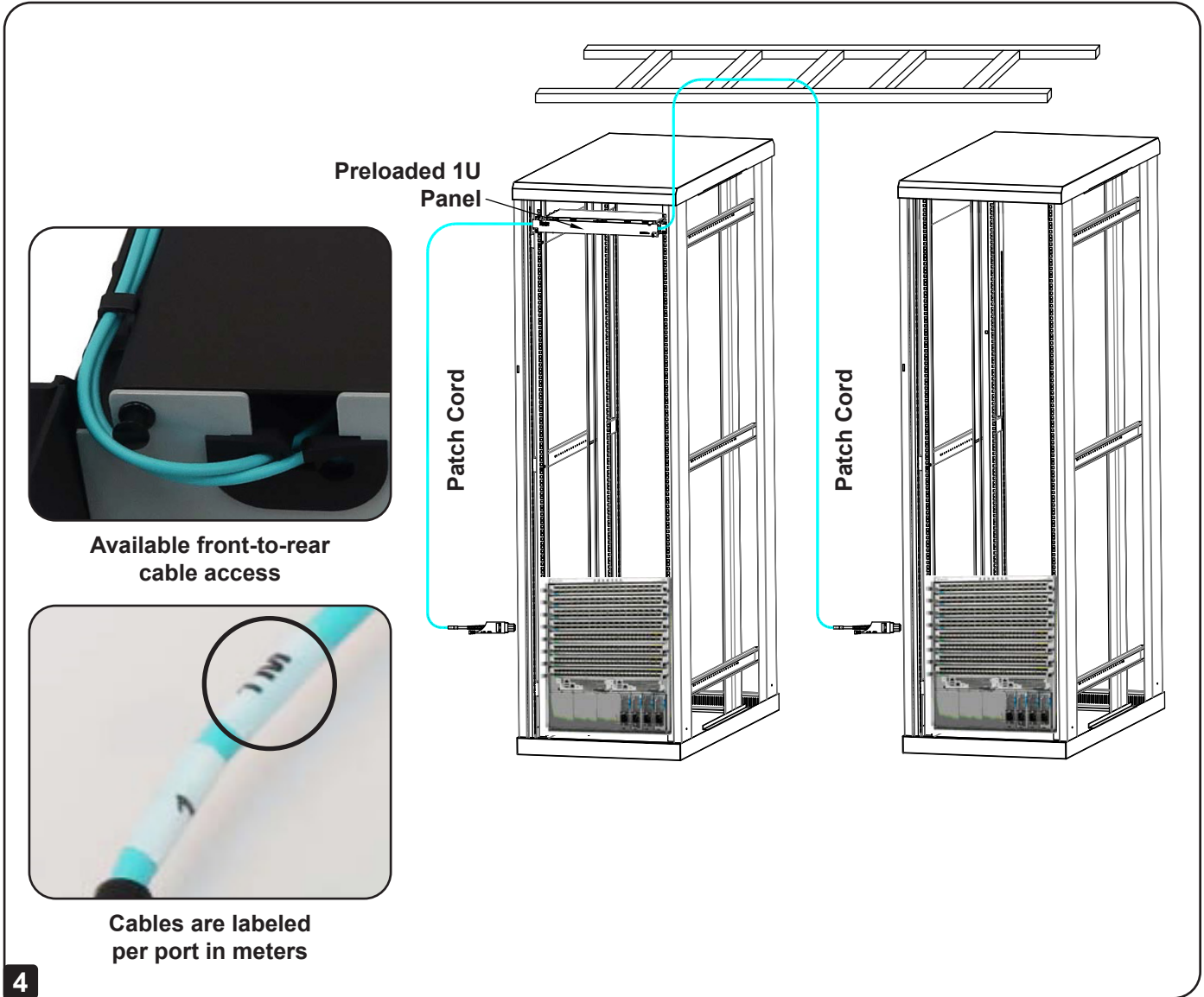
Note: The tray will be tilting down.



Installation

- 4** Locate the appropriate LC or MTP-MPO cable. Remove the Velcro strap, then uncoil and pull cable, as required.

Note: Excess cable slack can be recoiled inside the panel.



4

