

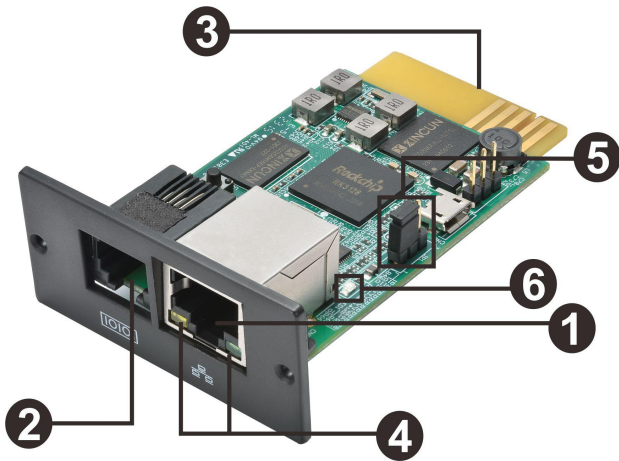
# SP100 Web Pro

## Quick Start Guide

### Package Contents

Qty	Description
1	SNMP card for all UPS series
1	installation CD
1	user instructions

### Hardware Overview



#### No. Description

- 1 Ethernet port (10/100/1000Base-T)
- 2 Sensor port/data transmission port
- 3 Golden finger: connects to UPS slot
- 4 Ethernet port status LEDs
- 5 Jumper setting to restore default setting
- 6 Running speed LED for Ethernet 1000Mbit/s

#### Ethernet port status LEDs

Link status LED (Green)	Flash	Link Active
	Off	Card is not connected to the network
1000M LED (Yellow)	Flash	Port is operating at 1000Mbit/s
	Light	Port is operating at 100Mbit/s
	Off	Current web bandwidth is 10Mbit/s

#### Pin assignment for Jumper

Pin #	Status	Description
Pin 1 & Pin 2	Closed	Normal operation
Pin 2 & Pin 3	Closed	After re-connecting utility, the IP address of SNMP web card and password will restore to default setting. Default static IP address: (192.168.102.230) Default password: 12345678

**NOTICE:** After setting is restored to default, be sure to change the jumper setting to connect Pin 1 and Pin 2 for normal operation.

## Installation and Connection

Follow below steps to install and connect the SNMP web card:

**Step 1:** Remove the cover of intelligent slot on the back panel of UPS and retain the screws

**Step 2:** Slide the card into the open slot and secure with the screws from step 1.

(see Fig. 2-1)



Fig. 2-1

Refer to Fig. 2-2 for connecting the SNMP web card.

**Step 3:** Plug Ethernet cable to the Ethernet port (RJ-45) on the SNMP web manager.

**Step 4:** Use one more Ethernet cable to connect to the sensor port on the SNMP web manager.

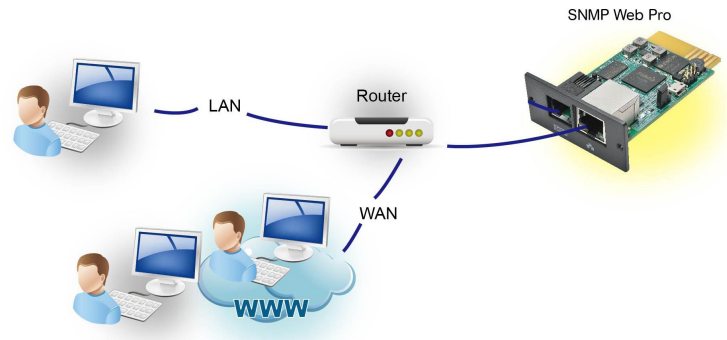


Fig. 2-2

## Configuration

a) Please install SNMP web manager software in your PC. After software is installed successfully, the Installer will leave a shortcut icon on your desktop.



Fig. 3-1

b) Enter specific IP address to search all SNMP devices in LAN. The SNMP web manager is default applied static IP address as 192.168.102.230, default subnet mask as 255.255.255.0, and default gateway as 192.168.102.254. Users can modify IP address or apply DHCP mode through web server of SNMP web pro card, SSH Client or SNMP Web Manager.

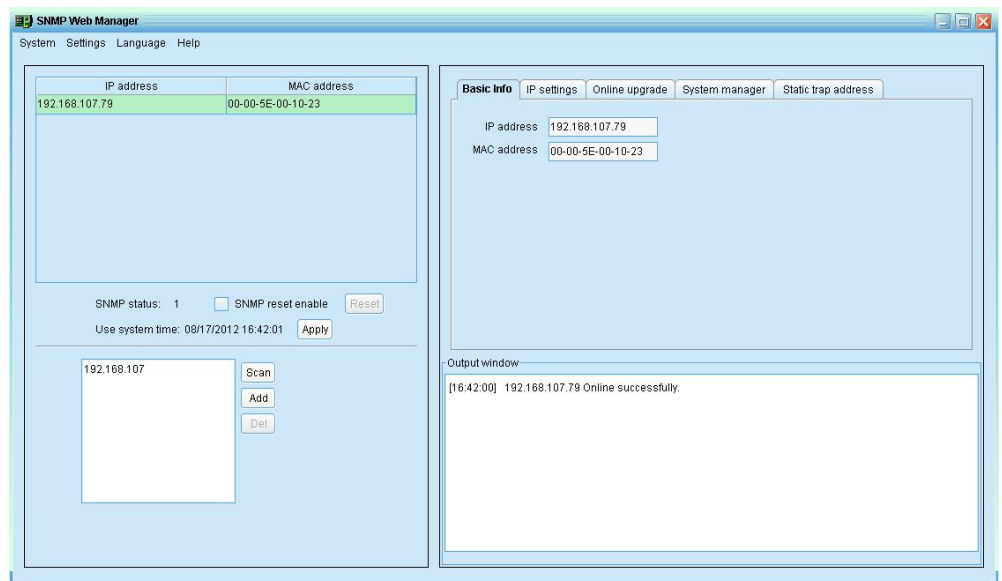


Fig. 3-2

c) User can modify IP setting, online upgrade, password management, and static trap address setting in SNMP Web Manager interface. It is necessary to enter password for any medications. The default password is 12345678

## Monitoring

Double click the selected device from the device list (refer to Fig. 3-2) to open web page as Fig. 4-1.

The screenshot displays the 'SNMP Web Pro 2.0' interface. On the left is a navigation menu with categories like Information, Basic information, UPS setting, Control, System configuration, Log, and Help. The main content area shows several data tables:

UPS information	
UPS mode	Line Mode
Auto reboot	enabled
ECO Mode	disabled
Bypass when UPS is off	disabled
Bypass not allowed	disabled
UPS warning	
UPS temp	26.4 °C
Converter mode	disabled
Fault type	

Input information	
Input voltage	235.7 V
Input frequency	50.0 Hz

Output information	
Output voltage	229.5 V
Output current	0.0 A
Output frequency	50.0 Hz
Load level	0 %

Battery information	
Battery voltage	54.6 V
Remaining backup time	834 Min
Battery capacity	100 %

EMD Information	
EMD temp	31.9 °C
Humidity	47.3 %
Alarm1	0
Alarm2	0

**Fig. 4-1**

Please check SNMP Web Manager User Manual for detailed configuration.