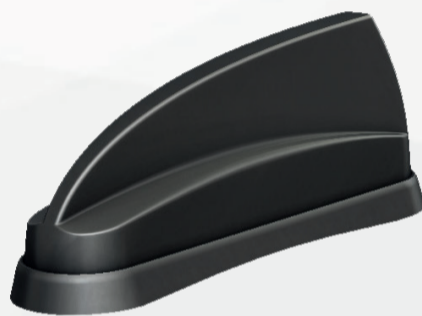


Next Generation LTE Antennas

Introducing the industry's most comprehensive range of antenna solutions that cover LTE Band 71 (617-698MHz), CBRS, Private LTE, and more. Panorama Antennas offers cutting edge, high performance products over an ever wider frequency spectrum allowing customers to purchase, install and utilise a future-proof product now for a whole range of different applications.

Mobile

4G/5G MiMo Sharkee® Antenna



FEATURES

2x2 MiMo 5G/4G LTE
617-960 / 1710-6000MHz
Optional Integrated GPS/GNSS
Up to 4x4 MiMo WiFi 2.4/5GHz
Support for VHF / UHF or AM/FM external whip on GPSD model
UN118 Cables

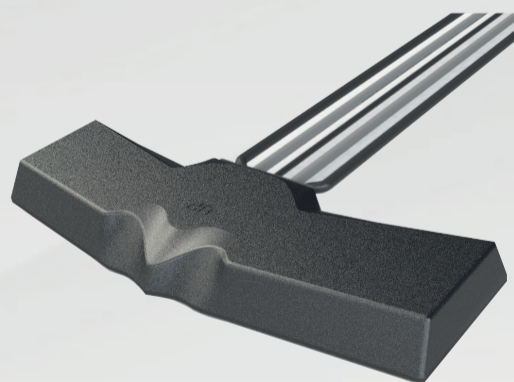
The GPSD and SHKG Sharkee® range has become a byword for industry leading technology in a discrete OEM sharfin housing. The 6-60 brings 5G capability to the Sharkee® family.



| Part no. | MiMo LTE | GPS/ GNSS | MiMo WiFi | External Whip |
|--------------|-------------|--------------|--------------|------------------|
| GPSD-6-60 | 2x2 | • | | • |
| GPSD-6-60-DW | 2x2 | • | 2x2 | • |
| GPSD-6-60-TW | 2x2 | • | 3x3 | • |
| GPSD-6-60-QW | 2x2 | • | 4x4 | • |
| SHKG-6-60 | 2x2 | • | | |
| SHKG-6-60-DW | 2x2 | • | 2x2 | |
| SHKG-6-60-TW | 2x2 | • | 3x3 | |
| SHKG-6-60-QW | 2x2 | • | 4x4 | |

* Part number excludes extension cable assemblies

Dash Mount MiMo Antenna



FEATURES

2x2 MiMo 5G/4G LTE
617-960 / 1710-6000MHz
Optional Integrated GPS/GNSS
Optional SiSo or 2x2 MiMo WiFi 2.4/5GHz
Supplied with UN118 Cables

The Panorama BAT range is designed for Telematics applications requiring high speed data with MiMo 4G / 5G and fall back 3G/2G support along with optional positioning through GPS/GNSS, and optional dual band 2.4/5.0GHz WiFi.



| Part no. | MiMo LTE | GPS/ GNSS | WiFi |
|-------------------|-------------|--------------|------|
| BATM-7-60 | 2x2 | | |
| BATGM-7-60 | 2x2 | • | |
| BATGM-7-60-S24-58 | 2x2 | • | 1x |
| BATGM-7-60-24-58 | 2x2 | • | 2x2 |

* Antenna supplied with 3m / 10ft of cable assembly with SMA male (cellular & GNSS) and reverse polarity SMA male (WiFi). Other cable / connector configurations available upon request

Great White® 5G MiMo Antenna

FEATURES

2x2 MiMo 5G/4G LTE
617-960 / 1710-6000MHz
Optional Integrated GPS/GNSS
Up to 6x6 MiMo WiFi 2.4/5.0GHz
UN118 Cables

The Great White® 5G range provides effective 2x2 MiMo LTE operations with excellent isolation and low correlation coefficient. Available in Black or White housing.


**IK10
RATED**
**IP69
RATED**


| Part no. | MiMo LTE | GPS/ GNSS | MiMo WiFi |
|------------------|-------------|--------------|--------------|
| LPMM-6-60 | 2x2 | | |
| LGMM-6-60 | 2x2 | • | |
| LGMDM-6-60-24-58 | 2x2 | • | 2x2 |
| LGMTM-6-60-24-58 | 2x2 | • | 3x3 |
| LGMQM-6-60-24-58 | 2x2 | • | 4x4 |
| LGMHM-6-60-24-58 | 2x2 | • | 6x6 |

*Part numbers refer to the black version only

MAKO® 5G MiMo Antenna

FEATURES

4x4 MiMo 5G/4G LTE
617-960 / 1710-6000MHz
Optional Integrated GPS/GNSS
Up to 6x6 MiMo WiFi 2.4/5.0GHz
UN118 Cables

The MAKO® 5G is up to 11 antennas in a single housing. Designed for use with Advanced Pro routers that require a 4x4 MiMo 5G/4G LTE antenna system. Available in black or white housing.

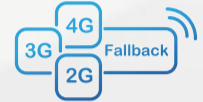

**IK10
RATED**
**IP69
RATED**


| Part no. | MiMo LTE | GPS/ GNSS | MiMo WiFi |
|-------------------|-------------|--------------|--------------|
| LPMM4-6-60 | 4x4 | | |
| LGMM4-6-60 | 4x4 | • | |
| LGMDM4-6-60-24-58 | 4x4 | • | 2x2 |
| LGMTM4-6-60-24-58 | 4x4 | • | 3x3 |
| LGMQM4-6-60-24-58 | 4x4 | • | 4x4 |
| LGMHM4-6-60-24-58 | 4x4 | • | 6x6 |

*Part numbers refer to the black version only

Branch

Directional 2x2 MiMo 4G/5G Antenna


**IP66
RATED**


FEATURES

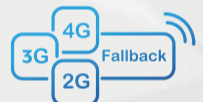
2x2 MiMo High Gain Directional Antenna for 4G/5G
617-960 / 1710-6000MHz
Optional Integrated GPS/GNSS
Suitable for wall or mast mounting

The WMM2G-6-60 is a high gain directional 2x2 MiMo antenna for 4G and 5G networks. It incorporates two wideband element assemblies in a single housing and is designed to support fixed site client devices. It offers 6dBi peak gain for 617- 960MHz and 9dBi peak gain for 1710-6000MHz.

| Part no. | MiMo LTE | GPS/ GNSS | Cable & Connector |
|------------------|-------------|--------------|-------------------------|
| WMM2G-6-60-05NJ | 2x2 | | 0.5m (1.6') 2x N Female |
| WMM2G-6-60-5SP | 2x2 | | 5m (17') 2x SMA Male |
| WMM2GG-6-60-05NJ | 2x2 | • | 0.5m (1.6') 2x N Female |
| WMM2GG-6-60-5SP | 2x2 | • | 5m (17') 2x SMA Male |

* Extension cables available upon request

Directional 4x4 MiMo 4G/5G Antenna


**IP66
RATED**


FEATURES

4x4 MiMo High Gain Directional Antenna for 4G/5G
617-960 / 1710-6000MHz
Supports New Generation CAT18/20 Devices
Optional Integrated GPS/GNSS
Suitable for wall or mast mounting

The WMM4G-6-60 is a high gain directional 4x4 MiMo antenna for 4G and 5G networks. It incorporates four pairs of wideband element assemblies in a single housing and is designed to support fixed site CAT18/20 client devices. It offers 6dBi peak gain for 617- 960MHz and 9dBi peak gain for 1710-6000MHz.

| Part no. | MiMo LTE | GPS/ GNSS | Cable & Connector |
|------------------|-------------|--------------|-------------------------|
| WMM4G-6-60-05NJ | 4x4 | | 0.5m (1.6') 4x N Female |
| WMM4G-6-60-5SP | 4x4 | | 5m (17') 4x SMA Male |
| WM-IN2582-10 | 4x4 | | 10m (33') 4x SMA Male |
| WM-IN2582-15 | 4x4 | | 15m (49') 4x SMA Male |
| WMM4GG-6-60-05NJ | 4x4 | • | 0.5m (1.6') 4x N Female |
| WMM4GG-6-60-5SP | 4x4 | • | 5m (17') 4x SMA Male |

* Extension cables available upon request

MAKING THE CONNECTION

www.panorama-antennas.com

IoT

Low Profile Panel Antenna

FEATURES

Cost effective 2G/3G/4G/5G coverage
617-960 / 1710-6000MHz
Integrated low loss cable
Robust but subtle design



| Part no. | Cable & Connector |
|--------------|--------------------|
| LPB-6-60-2SP | 2m (6'6") SMA Male |
| LPB-6-60-5SP | 5m (17') SMA Male |

*Other cable lengths and connector types available upon request

The LPB-6-60 is supplied with integrated 5mm / 0.2" double shielded CS29 coaxial cable and is available with a wide variety of connectors fitted. This Antenna is an ideal solution for use in industrial and domestic environments with cellular modems/routers and Machine to Machine (M2M) wireless connectivity applications.

Low Profile Magnetic Antenna

FEATURES

Cost effective 2G/3G/4G/5G coverage
617-960 / 1710-600MHz
Magnetic Mount
Low Profile Design



| Part no. | Cable & Connector |
|----------------|--------------------|
| LPBEM-6-60-2SP | 2m (6'6") SMA Male |
| LPBEM-6-60-5SP | 5m (17') SMA Male |

The Panorama LPBEM-6-60 is a range of low cost high performance magnetic mount antennas for temporary fit applications. At only 95mm (3.7") high and protected by a robust high impact radome the antenna is almost impervious to daily wear and tear.

4G/5G Bracket Mount Antenna

FEATURES

Cost Effective 2G/3G/4G/5G coverage
617-960 / 1710-6000MHz
Wall, mast or panel mount
Integrated low loss cable



| Part no. | Cable & Connector |
|---------------|--------------------|
| B4BE-6-60-2SP | 2m (6'6") SMA Plug |
| B4BE-6-60-5SP | 5m (17') SMA Plug |

*Other cable lengths and connector types available upon request

The B4BE antenna is a cost effective omni-directional broad band antenna for 5G/4G/3G and 2G devices from 617-960/1710-6000MHz and is suitable for external or internal installation. The omni-directional radiation pattern allows easy placement of the antenna in an elevated position.

MAKING THE CONNECTION

www.panorama-antennas.com

Wide Band 4G/5G Terminal Paddle Antenna



FEATURES

Ultra Wide Band - 2G/3G/4G/5G
617-960 / 1710-6000MHz
Suitable for routers and terminals
Articulated connector

The PWB-6-60 antenna is a ground plane independent antenna covering 617-960/1710-3800/4400-6000MHz. Supporting 2G/3G/4G and new 5G bands the PWB-6-60 is the ideal one-size-fits-all solution for next generation devices, routers and terminals.

| Part no. | Connector |
|----------------|--------------------------------------|
| PWB-6-60-RSMAP | Articulated SMA plug connector |
| PWB-6-60-RFDJ | Articulated FAKRA D female connector |

4G/5G Desk Mount MiMo Antenna



FEATURES

2x2 MiMo for 4G/5G
617-960 / 1710-6000MHz
Desk, window or wall mount
Integrated twin cable with a range of connectors

The DMM antenna provides an innovative and future proof solution for 2G/3G/4G and 5G networks. Incorporating two separately fed ultra wideband elements in a single housing the DMM is equipped to provide portable MiMo and diversity support for frequencies from 617-960/1710-6000MHz.

The DMM is an cost effective value added product for network operators and service providers ensuring a stable link with improved data rates for subscribers thereby improving satisfaction and retention.

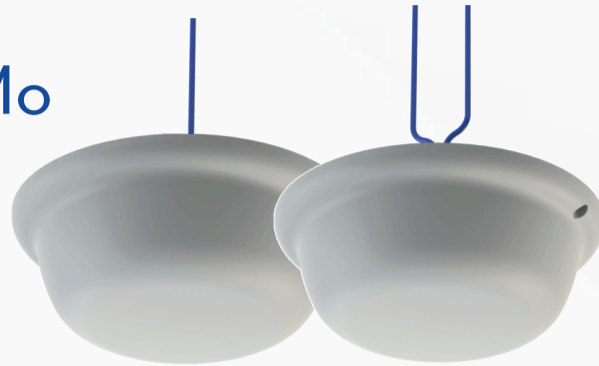
| Part no. | Connector |
|---------------|-----------------------|
| DMM-6-60-2SP | 2m (6'6") 2x SMA Male |
| DMM-6-60-2TS9 | 2m (6'6") 2x TS9 Male |

MAKING THE CONNECTION

www.panorama-antennas.com

In Building

Low PIM SiSo/MiMo Omni Ceiling Antenna



FEATURES

617-960 / 1710-6000MHz
Low profile
Flame Retardant Materials
Low PIM Construction

The CMSLP-6-60 range has been designed to provide omni-directional coverage for 4G & 5G networks in a low profile package. The compact, robust low-profile housing contains an efficient low PIM element covering 617-960/1710-6000MHz.

The CMM-6-60 range has been designed to provide 2x2 MiMo coverage for 4G & 5G networks in a low profile package. The compact, robust low-profile housing contains two antenna elements with effective isolation and low correlation covering 617-960/1710-6000MHz.

| Part no. | LTE | Connector |
|--------------------|-----|-----------|
| CMSLP-6-60-05NJ | 1x | N Female |
| CMSLP-6-60-054310J | 1x | 4.3-10 |
| CMM-6-60-05NJ | 2x2 | N Female |
| CMM-6-60-054310J | 2x2 | 4.3-10 |

Ultra Low Profile UHF & Cellular Ceiling Antenna



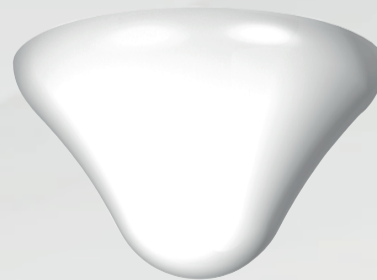
FEATURES

380-520 / 617-960 / 1710-3800MHz
Ultra Low Profile
SiSo UHF+3G/4G/5G Antenna
Flame Retardant Materials & Low PIM

The CMSLP-038-4 range has been designed to provide SiSo UHF+3G/4G & 3.8GHz 5G coverage for DAS networks in an ultra low profile package. The compact, robust low-profile housing contains a highly efficient antenna element covering 380-520/617-960/1710-3800MHz.

| Part no. | Connector |
|---------------------|-----------|
| CMSLP-038-4-05NJ | N Female |
| CMSLP-038-4-054310J | 4.3-10 |

UHF & Cellular Ceiling Antenna



FEATURES

380-520 / 617-960 / 1710-6000MHz
Ceiling mount design
Future proof UHF and cellular coverage
Flame Retardant Radome & Low PIM

Panorama's CMWBD-038-3-NJ allows businesses and facilities to support multi-service / multi-operator wireless coverage. A huge number of services are supported from 380MHz UHF to 6GHz - including UHF, GSM900, AWS 1700MHz, Quadband GSM, 3G UMTS, 2.4GHz WLAN, LTE & WiMAX etc. enabling simultaneous connectivity for employees, consumers and emergency services and providing in-building service providers and DAS installers with a convenient one size fits all solution.

| Part no. | Connector |
|----------------|-----------|
| CMWBD-038-3-NJ | N Female |

MAKING THE CONNECTION

www.panorama-antennas.com