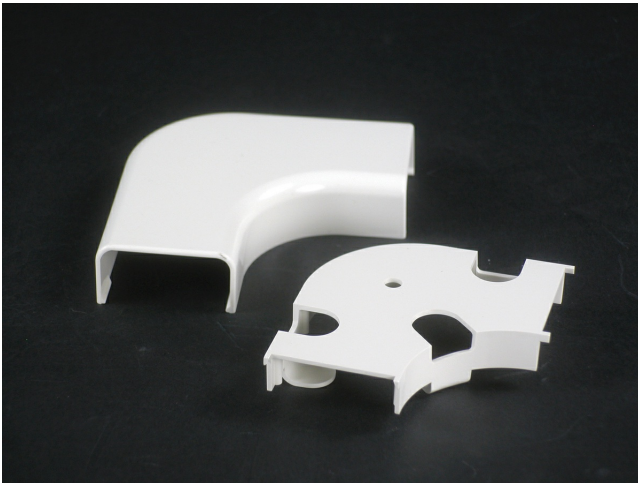




Wiremold
Uniduct 2900 Series Radiused Flat Elbow Fitting
Part No. 2911FO-FW



Uniduct® Series 2700, 2800, 2900 Latching Raceway Systems are one-piece, single channel, nonmetallic raceways ideally suited for routing and protecting fiber optic, UTP, and other low-voltage (50V or less) cabling in an easy to install, aesthetically pleasing application. With a broad range of small, low profile raceways to satisfy your customer's unique needs. As well as your own. Wiremold Nonmetallic Raceways are a perfect choice for classroom, workstation and hotel applications or anywhere you need a drop. Exceptionally durable and versatile, you can expect quick and easy installation, thanks to adhesive backing, 8' lengths and pre-drilled mounting holes.

Features & Benefits

For right angle turns on same surface. Maintains 1 1/4" (32mm) bend radius when installing UTP and fiber optic cable.

Specifications

General Info

Product Line	Wiremold	UPC Number	786776088762
Country Of Origin	United States	Application Sector	Residential/Commercial
Standard	Uniduct Series Raceway is not UL Listed and is only designed for use in protecting electrical cords, low voltage wiring and cabling.	Type	Raceway

Buy American Act Compliance

NAFTA	Yes
-------	-----

Additional Information

RoHS Conformant	Yes	Product Environmental Profile	Yes
-----------------	-----	-------------------------------	-----