



  
**COALESCE**<sup>TM</sup>  
WIRELESS  
PRESENTATION  
SYSTEM

**CONNECT AND GO MEETINGS FROM ANYWHERE**

BLACKBOX.COM



/COALESCE

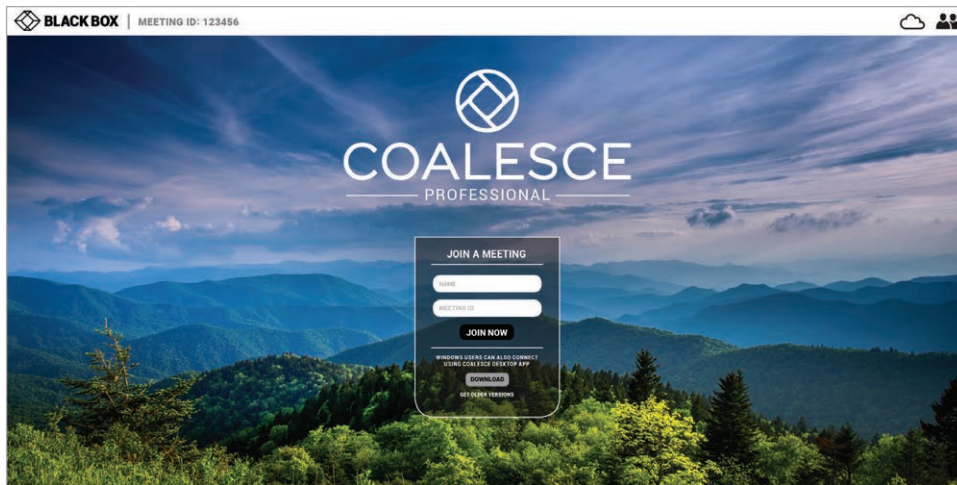
## MEETINGS MADE EASY WITH ALL-IN-ONE WIRELESS PRESENTATION

Today's workspaces require real-time collaboration tools enabling attendees and presenters to connect from multiple locations around the world. Black Box Coalesce makes it easy to connect and share content in meetings from anywhere in the world with AV technology designed to transform the way team members communicate. Coalesce features a new video conference tool that eliminates the need for a conference bridge, making it easy to present to or look in on a meeting remotely.

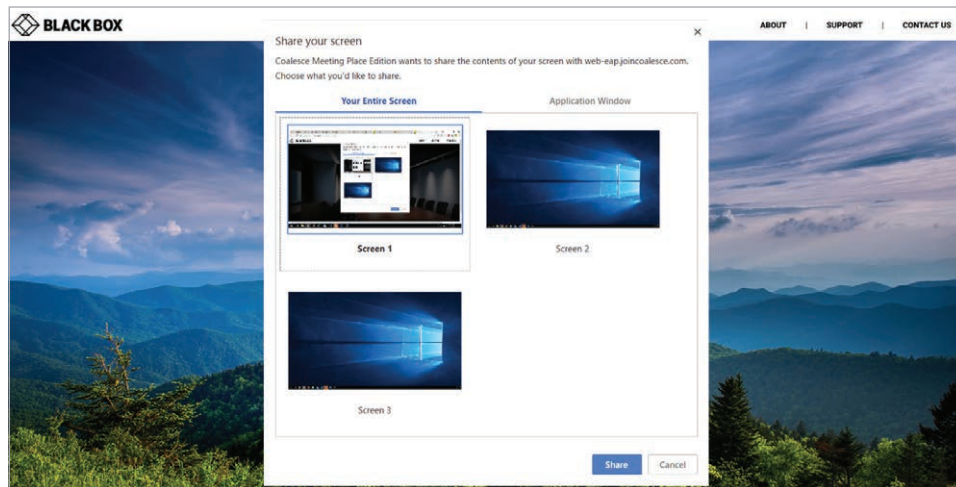
- Dongle-free, browser-based system
- Remote teams work as though they are in the same room in real-time
- Moderator functionality from anywhere in the world
- Connect and Go installation-free setup

## CONNECT AND GO WITH NO DONGLES OR CABLES

### STEP 1: CONNECT TO COALESCE IN YOUR BROWSER



### STEP 2: SHARE YOUR SCREEN AND PRESENT IN SECONDS.





**COALESCE PROFESSIONAL FEATURES AND BENEFITS**

- No Dongles or Wires
- Intuitive Desktop App or Browser Interface
- No Syncing or Pairing Required
- Enterprise-Level Security Encryption
- Video Conferencing
- Remote Meeting Presence
- Enterprise Deployment & Central System Management
- Moderator Functionality
- Central Deployment

**CHOOSE THE COALESCE PRODUCT THAT MEETS YOUR NEEDS**

Coalesce MPE is designed for in-room wireless presentation experiences, while Coalesce Professional allows you to expand the reach of your meetings.

FEATURES	COALESCE MEETING PLACE EDITION	COALESCE PROFESSIONAL
MULTI-PERSON SHARING	•	•
ATTENDEE DISPLAY MANAGEMENT	•	•
LOCAL NETWORK CONNECTION	•	•
OPTIONAL PIN	•	•
CHROME EXT & SUPPORT	•	•
REACH THROUGH PC CONTROL	•	•
WHITEBOARDING	•	•
EMBEDDED MEDIA PLAYER	•	•
REMOTE VIEWING		•
SPLASH SCREEN CUSTOMIZATION		•
CENTRAL DEPLOYMENT/MANAGEMENT		•
VIDEO CONFERENCING		•



## REAL-TIME COLLABORATION TOOLS FOR REAL-TIME MEETINGS

The Coalesce Platform includes many features designed for modern environments and meeting spaces:

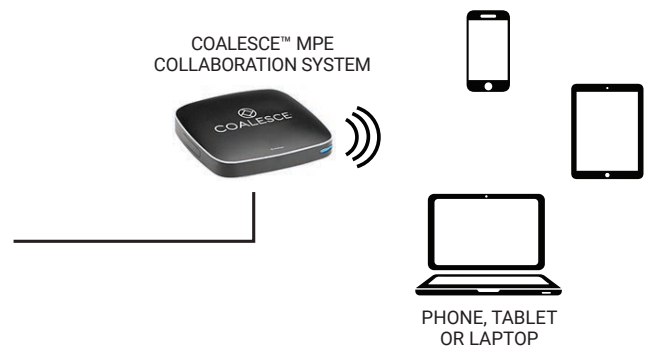
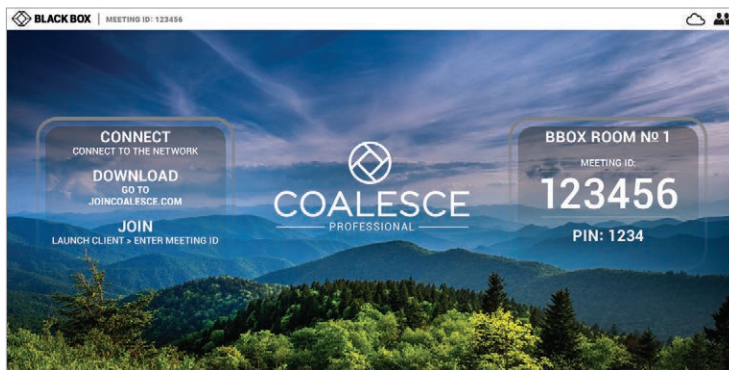
- Multi-person sharing: Enable simultaneous sharing up to eight presenters.
- Attendee display management: Moderate meetings and easily add/remove attendees from the meeting.
- Whiteboarding: Virtually sketch and annotate, screen capture and send ideas within the platform.
- File sharing: Edit documents in real-time just by logging into the platform.
- Screen capture: Save your notes and send to your team within the platform.
- Media player: Share HD video and web pages on all devices without any lag.
- Voice and video calls: Conduct person-to-person, room-to-room and meetings with participants around the world.
- Presentation management: Click a button to switch between presenters without unplugging cables or dongles.
- Remote viewing: View the meeting remotely as though you are in the room.
- Central deployment & management: Easily configure and deploy Coalesce Professional for your enterprise environment via web-browser interface.



# ENGINEERED FOR MEETINGS ACROSS YOUR CAMPUS OR AROUND THE WORLD

## Huddle Spaces

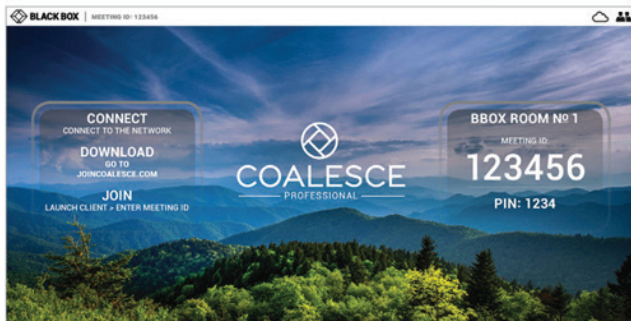
Spaces with 1 display and 1 source



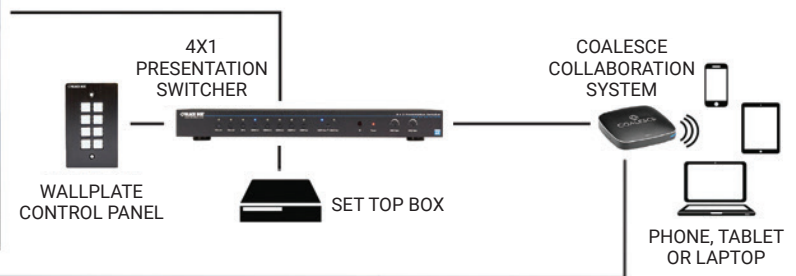
SYSTEM COMPONENTS:	
COALESCE MPE WIRELESS PRESENTATION SYSTEM	WC-COA-MPE
OR	
COALESCE PROFESSIONAL ALL-IN-ONE VIDEO CONFERENCING AND WIRELESS PRESENTATION SYSTEM	WC-COA-PRO
SLIMLINE HIGH-SPEED HDMI CABLE	VCS-HDMI-001M

## Small Meeting Room Applications

Spaces with 1 display and 2-4 sources



VIDEO CONFERENCING  
(COALESCE PROFESSIONAL ONLY)

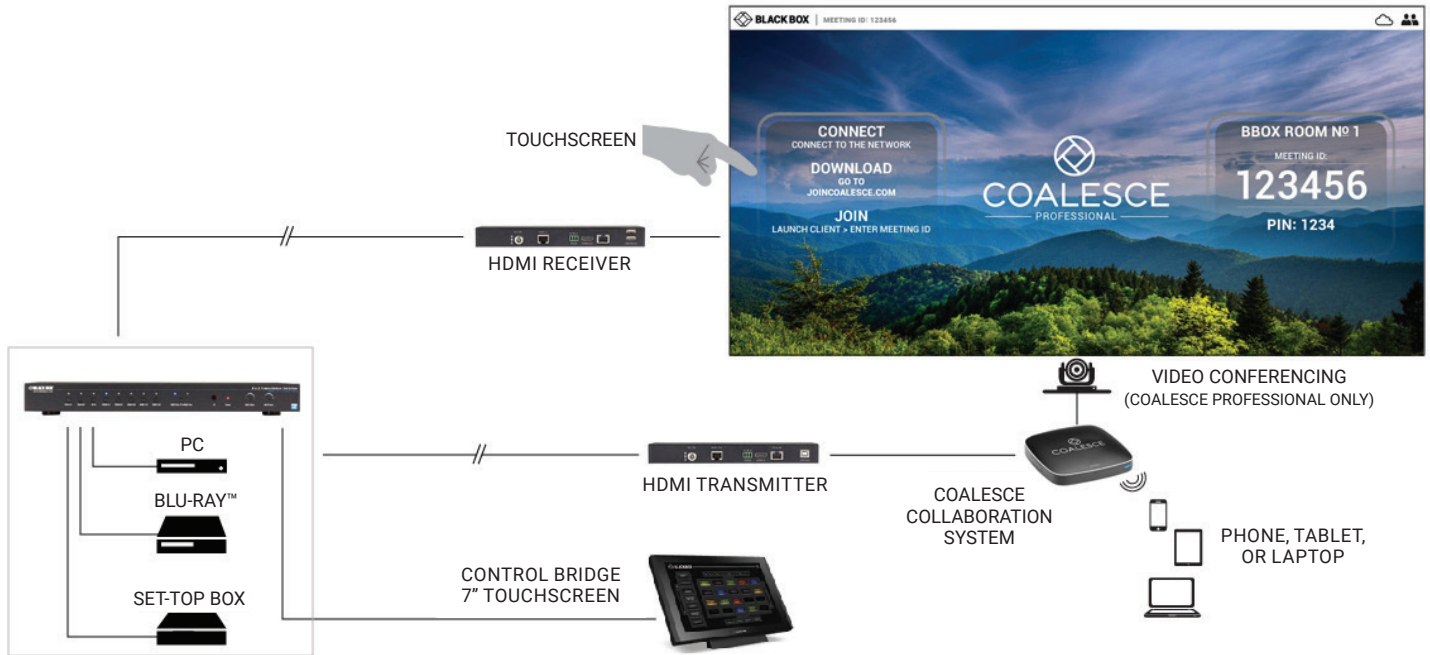


SYSTEM COMPONENTS:	
COALESCE MPE WIRELESS PRESENTATION SYSTEM	WC-COA-MPE
OR	
COALESCE PROFESSIONAL ALL-IN-ONE VIDEO CONFERENCING AND WIRELESS PRESENTATION SYSTEM	WC-COA-PRO
4 X 1 PRESENTATION SWITCHER	AVSC-401H
WALLPLATE CONTROL PANEL, 8-BUTTON	AVS-CTRL8
SLIMLINE HIGH-SPEED HDMI CABLE	VCS-HDMI-001M
GIGATRUE® CAT6 LOCKABLE PATCH CABLE	C6PC70-GY-06



# BOARDROOM APPLICATIONS

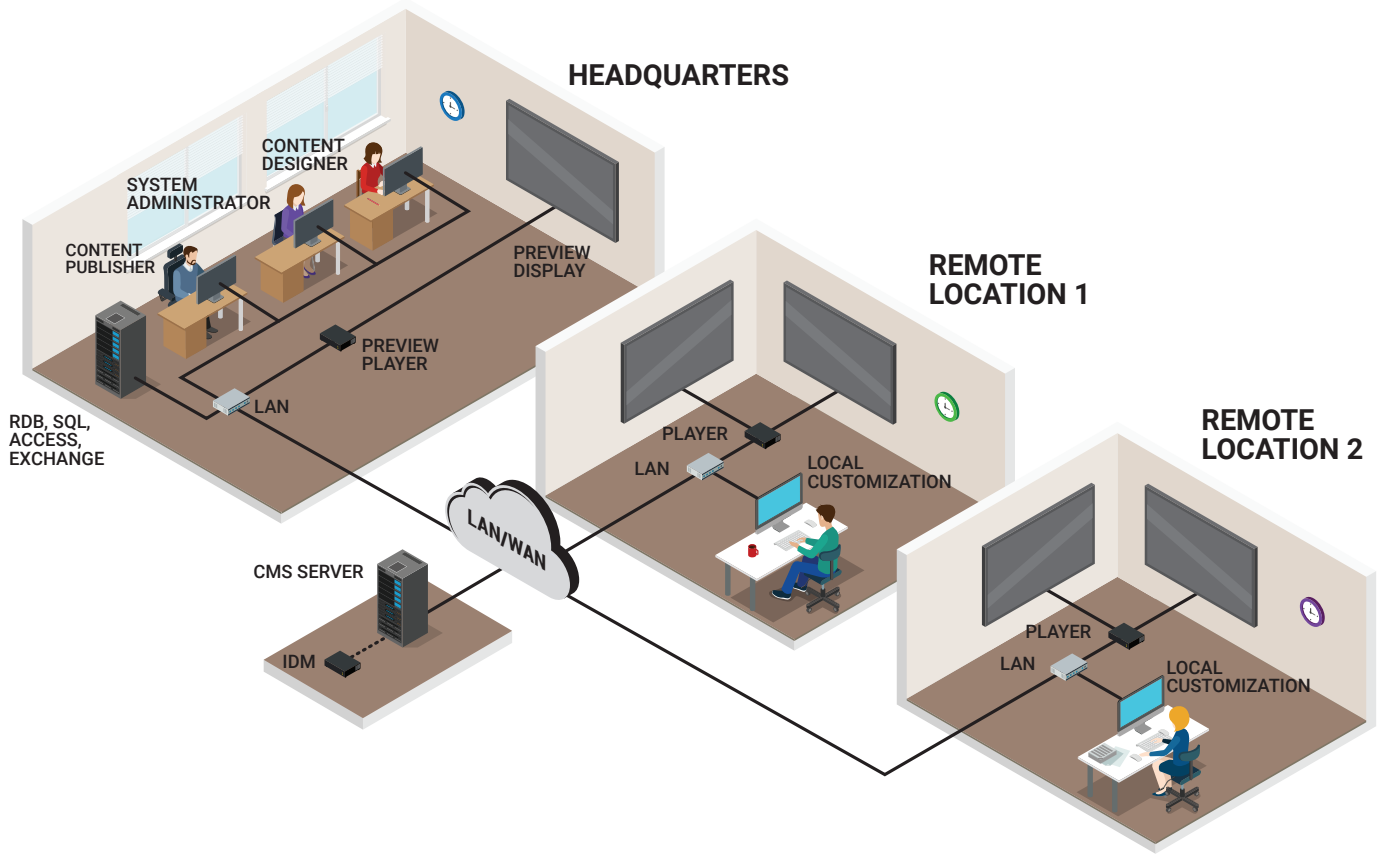
Spaces with 1-2 displays and 4 sources



SYSTEM COMPONENTS:	
COALESCE MPE WIRELESS PRESENTATION SYSTEM	WC-COA-MPE
OR	
COALESCE PROFESSIONAL ALL-IN-ONE VIDEO CONFERENCING AND WIRELESS PRESENTATION SYSTEM	WC-COA-PRO
8 X 2 PRESENTATION SWITCHER	AVSC-0802H
CONTROLBRIDGE 7" TOUCH SCREEN CONTROL SYSTEM	CB-TOUCH7-T
SELECT SERVER CABINET – 15U	RM2400A
VX1000 – HDMI RECEIVER	VX-1001-RX
VX1000 – HDMI TRANSMITTER	VX-1001-TX
SLIMLINE HIGH-SPEED HDMI CABLE	VCS-HDMI-001M
GIGATRUE® CAT6 LOCKABLE PATCH CABLE	C6PC70-GY-06
GIGATRUE® CAT6 HDBASET CABLE	EYN871B-PB-1000



# CENTRAL DEPLOYMENT FOR ENTERPRISE APPLICATIONS



## BLACK BOX CORPORATE AV SOLUTIONS



### COLLABORATION

Coalesce™ Meeting Place Edition enables local and remote users to connect and share content, screens and white board notes from any laptop, tablet and smart phone. Users can connect wirelessly or via the wired network.



### INFRASTRUCTURE

Whether you want cabling or cabinets, you'll find what you need right here. Questions? Our experts can assist with pre-configuration and training along with FREE application and engineering support.



### VIDEO SWITCHING & DISTRIBUTION

Easily switch, scale and extend any kind of video source to any number of displays. Use in standalone applications or connect remote sources. Black Box extenders and presentation switchers make you look like an AV pro, even if you're not.



### VISUAL COMMUNICATIONS

Make the most of your displays to inform, persuade and engage visitors, clients and employees. Our networked digital signage systems give you a dynamic and efficient way to communicate information and branding materials.



### ROOM CONTROL & MONITORING

Use ControlBridge™ to gain one touch control of all multimedia AV, KVM and IP-enabled devices as well as room automation systems in conference rooms. ControlBridge enables you to focus on the meeting, not the technology behind it.



## WHY BLACK BOX

### EXPERTISE

Black Box project engineers can assist with system assessment, design, deployment and training.

### BREADTH

Black Box offers the most comprehensive suite of engineered KVM solutions in the industry.

### SUPPORT

Reflecting our commitment to complete satisfaction, our dedicated team of highly trained support technicians is available by phone free of charge, 24 hours a day, every day of the year.

### WARRANTIES

Multi-year warranties with multi-year extensions and replacement options are available.

### FINANCIAL STRENGTH

Nearly \$1 billion in annual revenue; publicly traded (BBOX).

### EXPERIENCE

Providing leading technology solutions since 1976, Black Box helps more than 175,000 customers in 150 countries build, manage, optimize and secure IT infrastructures.

### CENTER OF EXCELLENCE

Black Box offers a Center of Excellence featuring professional services and support agreements that help optimize customers' systems and maximize uptime.

### SERVICE LEVEL AGREEMENTS

Our service level agreements give customers access to technical support, product training, dedicated application engineers and more.

