

# SonicWall® SonicWave 432o

## Safety, Regulatory and Legal Information

February 2019

Regulatory Model Number:  
APL42-0C1



232-004714-50 Rev A



Copyright © 2019 SonicWall Inc. All rights reserved.

SonicWall is a trademark or registered trademark of SonicWall Inc. and/or its affiliates in the U.S.A. and/or other countries. All other trademarks and registered trademarks are property of their respective owners.

The information in this document is provided in connection with SonicWall Inc. and/or its affiliates' products. No license, express or implied, by estoppel or otherwise, to any intellectual property right is granted by this document or in connection with the sale of SonicWall products. EXCEPT AS SET FORTH IN THE TERMS AND CONDITIONS AS SPECIFIED IN THE LICENSE AGREEMENT FOR THIS PRODUCT, SONICWALL AND/OR ITS AFFILIATES ASSUME NO LIABILITY WHATSOEVER AND DISCLAIMS ANY EXPRESS, IMPLIED OR STATUTORY WARRANTY RELATING TO ITS PRODUCTS INCLUDING, BUT NOT LIMITED TO, THE IMPLIED WARRANTY OF MERCHANTABILITY, FITNESS FOR A PARTICULAR PURPOSE, OR NON-INFRINGEMENT. IN NO EVENT SHALL SONICWALL AND/OR ITS AFFILIATES BE LIABLE FOR ANY DIRECT, INDIRECT, CONSEQUENTIAL, PUNITIVE, SPECIAL OR INCIDENTAL DAMAGES (INCLUDING, WITHOUT LIMITATION, DAMAGES FOR LOSS OF PROFITS, BUSINESS INTERRUPTION OR LOSS OF INFORMATION) ARISING OUT OF THE USE OR INABILITY TO USE THIS DOCUMENT, EVEN IF SONICWALL AND/OR ITS AFFILIATES HAVE BEEN ADVISED OF THE POSSIBILITY OF SUCH DAMAGES. SonicWall and/or its affiliates make no representations or warranties with respect to the accuracy or completeness of the contents of this document and reserves the right to make changes to specifications and product descriptions at any time without notice. SonicWall Inc. and/or its affiliates do not make any commitment to update the information contained in this document. For more information, visit <https://www.sonicwall.com/legal/>.

## Professional Installation

Because of the unique market and functionality targeted by this product, the SonicWave 432o requires specially trained professionals to configure and install the product. Also, according to FCC rules (similar rules in other regulatory domains), you are required to consult with an experienced professional RF installer/dealer/technician to conduct the installation, conform to the regulation, and correct the interference from the standard industry measures. The FCC requires you to be notified that any changes or modifications made to the device that are not expressly approved by SonicWall could void your authority to operate the equipment.

A professional installer is responsible for the proper installation and configuration of the outdoor SonicWave. The installer needs to understand and prepare for operating near any Terminal Doppler Weather Radar (TDWR) locations based on the FCC Memorandum and comply with all its requirements.

The professional installer needs to choose the correct antenna type and its gain should be so chosen that the equivalent isotropically radiated power (EIRP) is not more than that required for successful communication to ensure the reduction of potential radio interference with other users.

The professional installer must also properly select the current country of operation from the SonicWall configuration interface. Incorrectly entering the country of operation could result in illegal operation and might cause harmful interference to other systems.

SonicWall Inc. hereby declares that this product is distributed through our controlled distribution channel and requires that trained professionals are to install this product, and we will not sell this product directly to the general public through retail stores.

**WARNING: Electrical Hazard: Only qualified personnel should perform installation procedures. Within the context of the safety notes in this documentation qualified persons are defined as persons who are authorized to commission, ground and label devices, systems, and circuits in accordance with established safety practices and standards. A qualified person understands the requirements and risks involved with installing outdoor electrical equipment in accordance with national codes. Restricted Access location. This product is not intended to be installed and used in a home or public area accessible to the general population. When installed in schools, this equipment must be installed in a secure location accessible only by trained personnel.**

If you have any questions regarding the authorization, contact your SonicWall vendor for professional installation details.

## Installing SonicWave 432o Antennas

This section describes how to Install the included antennas (or approved alternates) onto the SonicWave.

The SonicWave default antenna configuration only supports Omni/Dipole antennas as shipped from the factory. When any other antenna or antenna pair is installed, the professional installer must correctly configure the SonicWave for the new antennas before enabling the radios. Configuration instructions are available online in the associated SonicWave Deployment Guide and are shipped with each SonicWall approved alternate antenna.

**CAUTION: To prevent damage to the SonicWave 432o, all RF output ports must be attached to an approved antenna before the radios are enabled.**

To install the antennas on your SonicWave 432o:

- 1 Remove all eight antennas from their bags and place one on each of the appropriate connectors, **matching the radio signals (5GHz or 2.4GHz) marked on the antennas to those marked above the connectors.**



- 2 Insert the antenna base firmly into the antenna connector.
- 3 Making sure there is no cross threading, fully tighten the silver knurled fitting using your fingers to the point that it cannot turn with moderate force. Do not use or twist the white antenna housing enclosure while securing the antenna.
- 4 Repeat **Step 2** and **Step 3** for each antenna.

**CAUTION: Only antennas provided by SonicWall are authorized for use with the SonicWave 432o. Be aware of the regulations in your region before using other antennas.**

## Connecting to Ground

Adequate grounding is required for the SonicWave 432o and the PoE injector. A ground screw assembly and wire are provided with the SonicWave. Consult a certified electrician to ensure that all grounding and cabling is installed in compliance with local electrical codes.

To connect the SonicWave 432o to ground:

- 1 Insert the provided ground connector screw into the star washer and then into the ring connector of the provided grounding wire. The ground connection for the SonicWave 432o is located on the back of the device.
- 2 Insert the ground connector screw into the SonicWave and tighten with a screwdriver to securely attach the grounding wire to the unit.
- 3 Securely attach the other end of the grounding wire to ground.

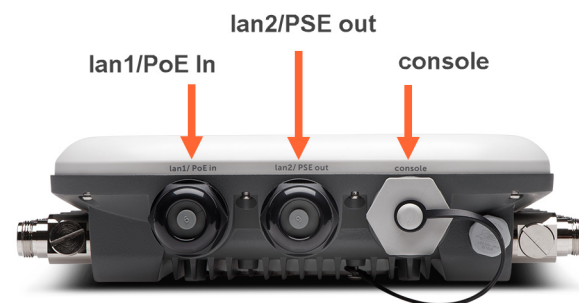
## Connecting PoE & Network Cables

The SonicWave 432o is powered by Power over Ethernet (PoE). SonicWall recommends using CAT 5e cables to connect PoE to the access point. For best results, first connect the antennas and cables and then mount the SonicWave to the pole or post.

**CAUTION: When using PoE to power the device, an 802.3at compliant PoE injector, PoE enabled switch, or SonicWall PoE enabled appliance is required to provide power to each SonicWave 432o. To maintain power to the SonicWave 432o, the maximum length of CAT 5e cable from the PoE device to the SonicWave 432o is 100 meters (333 feet).**

To connect the SonicWave 432o to PoE and the network:

- 1 Unscrew the cable gland sealing nut from the SonicWave **lan1/PoE In** port and remove it along with the slide claw and rubber seal, noting the orientation and positions of these parts.



- 2 Insert the CAT 5e Ethernet cable end (with RJ45 connector attached) through the sealing nut, then through the slide claw and seal.
- 3 Insert the RJ45 connector into the **lan1/PoE In** port, clicking it securely in place.
- 4 Slide the seal and claw into the SonicWave 432o port.
- 5 Screw the sealing nut securely onto the port opening and tighten the assembly by hand (finger-tight).

- 6 Connect the other end of the Ethernet cable to the **Data and Power Out** port on the PoE device.
- 7 Using a second Ethernet cable, connect the **Data in** port on the PoE device to an interface on your network device. If using a SonicWall firewall, connect it to an existing WLAN zone interface on the firewall or to an unused interface to be configured later in SonicOS.

The SonicWave 432o requires more bandwidth than a 1 Gigabit Ethernet connection can handle. SonicWall recommends connecting your SonicWave (through a PoE device) to a 2.5 Gbps interface to take full advantage of the SonicWave 432o data throughput capability.

- 8 Plug the power cord of the PoE Injector into an appropriate power outlet.
- 9 Wait up to two minutes for the **lan1 LED** on the SonicWave 432o to illuminate. This indicates an active connection.
- 10 Optionally connect the **lan2** port to an additional Ethernet connection.

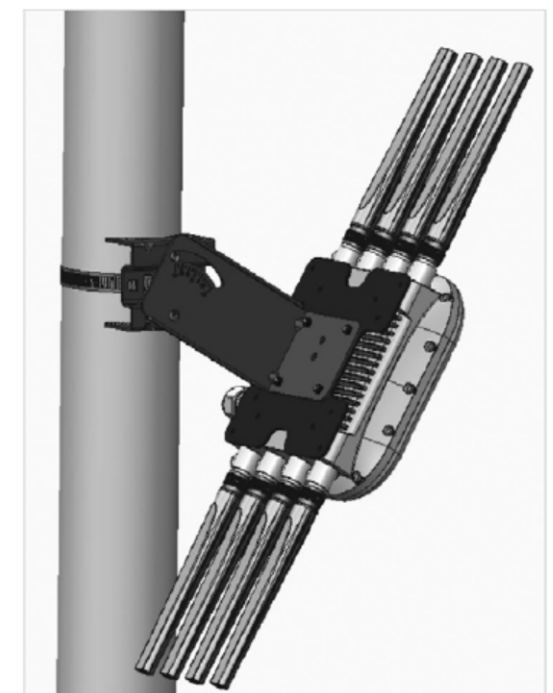
**NOTE: When a PoE powered device is connected to the lan2/PSE out port, the SonicWave 432o requires extra power and should be powered by a PoE injector or switch that provides 48 VDC, minimum 1.26 A (60 watts).**

- 11 The **console** port plug/cover must be securely installed as shown in the previous image (in **Step 1**) to maintain IP67 and NEMA 4X rating. For console port use, see the online SonicWave Deployment Guide.

## Mounting the SonicWave 432o on a Pole or Post

To mount the SonicWave 432o on a pole or post:

- 1 Fasten the mounting base securely to the back of the SonicWave 432o using the provided mounting screws.
- 2 Attach the pole-mount bracket to the mounting base using the provided screws. The pole-mount bracket can be attached either vertically or at a tilt of up to 30 degrees, depending on your requirements.
- 3 Loop the provided pole strap through the slots on the pole-mount bracket and then around the pole.
- 4 Tighten the strap with an appropriate screw driver and ensure that the device is firmly in place.



## Safety and Regulatory Information

SonicWave 432o complies with FCC U-NII New Rules.

### Regulatory Model Number

Regulatory Model / Type	Product Name
APL42-0C1	SonicWave 432o

		
--	---	---

- NOTE:** For NEMA Type 4X compliance, use the optional NEMA Type 4X mounting kit (purchased separately) and default antennas D121-05/D151-07.

- WARNING:** The following conditions are required for proper installation.

- Mount in a location away from direct sunlight and sources of heat. A maximum ambient temperature of 140° F (60° C) is recommended.
- Route cables away from power lines, fluorescent lighting fixtures, and sources of noise such as radios, transmitters, and broadband amplifiers.
- Ensure that no water or excessive moisture can enter the unit.
- Allow unrestricted airflow around the unit and through the vents on the side of the unit. A minimum of 1 inch (26mm) clearance is recommended.
- Consideration must be given to the connection of the equipment to the supply circuit. Appropriate consideration of equipment nameplate ratings must be used when addressing this concern. Do not overload the circuit.
- This equipment is not intended for use at workplaces with visual display units, in accordance with §2 of the German ordinance for workplaces with visual display units. To avoid incommoding reflections at visual display workplaces, this device must not be placed in the direct field of view.
- This product is not intended to be installed and used in a home or public area accessible to the general population. When installed in schools, this equipment must be installed in a secure location accessible only by trained personnel.

### Approved Alternate Antennas

Alternate antennas used with the SonicWave 432o must be approved and certified before use. However, in order to comply with the local laws and regulations, an approval might be required by the local regulatory authorities. The included antennas have been tested and approved for use with the SonicWave 432o model.

To reduce potential radio interference to other users, the antenna type and its gain should be so chosen that the equivalent isotropically radiated power (e.i.r.p) is not more than that required for successful communication.

Contact SonicWall for a list of antennas approved for use with the SonicWave 432o.

### RF Safety Distance

The antennas used for this transmitter must be installed to provide a separation distance of at least 61 cm from all persons and must not be co-located or operating in conjunction with another antenna or transmitter.

### Professional Installation Notice

To comply with FCC part 15 rules in the United States, the SonicWave 432o must be professionally installed to ensure compliance with the Part 15 certification. It is the responsibility of the operator and professional installer to ensure that only certified systems are deployed in the United States. The use of the system in any other combination (such as co-located antennas transmitting the same information) is expressly forbidden.

### Cable Connections

RS232 (Console) cables are designed for intra-building connection to other equipment. Do not connect these ports directly to communication wiring or other wiring that exits the building where the appliance is located.

### Power Supply Information

This product’s power is provided by the Ethernet cable plugged into the “LAN1” port, this is called “Power over Ethernet” or “PoE.” The PoE source should only be UL listed marked “Class 2” or “LPS” with an output rated 48 VDC, minimum 0.6 A, Tma: minimum 40 degrees C.

If PoE output on LAN2 is used to power an 802.3af compliant device, the PoE source should only be UL listed marked “Class 2” or “LPS,” with an output rated 48 VDC, minimum 1.26 A, Tma: minimum 40 degrees C.

LAN2 PSE output is 48 VDC, maximum 0.3 A.

## Exigences relatives à l’installation

- AVERTISSEMENT: Les conditions suivantes sont requises pour une installation correcte.**

- Procédez au montage dans un endroit à l'abri des rayons du soleil et des sources de chaleur. Une temperature ambiante maximale de 60 °C (140 °F) est recommandée.
- Faites passer les câbles à une distance raisonnable des lignes électriques, des luminaires pour lampes fluorescentes et des sources de bruit telles que les radios, les émetteurs et les amplificateurs à large bande.
- Veillez à éviter tout contact de l'appareil avec de l'eau ou une humidité excessive.
- Veillez à ce que l'air puisse circuler librement autour de l'appareil. Laissez un espace d'au moins 25,44 mm.
- Portez une attention particulière au raccordement de l'équipement au circuit d'alimentation, de manière à ce qu'une éventuelle surcharge des circuits ait un impact minime sur la protection contre les surintensités et sur les câbles d'alimentation. Respectez pour cela les mentions figurant sur la plaque d'identification du produit.
- Ce produit n'est pas conçu pour être installé et utilisé à domicile ou dans les lieux publics accessibles au grand public. Lorsqu'utilisé dans des écoles, cet équipement doit être installé dans un lieu sécurisé uniquement accessible au personnel qualifié.

### Autres antennes approuvées

Tout autre type d'antenne utilisé avec le SonicWave 432o doit être approuvé et certifié avant l'utilisation. Il est possible que les lois et règlements locaux exigent l'approbation préalable des organismes de réglementation locaux.

Les antennes comprises avec le produit ont été testées et approuvées pour l'utilisation avec le modèle SonicWave 432o.

Afin de réduire les perturbations radioélectriques affectant d'autres utilisateurs, veillez à choisir un type d'antenne et une valeur de gain de manière à ce que la puissance isotrope rayonnée équivalente (p.i.r.e.) ne dépasse pas la valeur requise pour une communication optimale.

Communiquez avec SonicWall pour obtenir une liste d'antennes approuvées pour l'utilisation avec le SonicWave 432o.

### Distance de sécurité RF

Les antennes utilisées avec cet émetteur doivent être installées de manière à laisser une distance de sécurité d'au moins 61 cm avec toute personne se trouvant à proximité. Les antennes ne doivent pas être situées à proximité d'autres antennes ou émetteurs et ne doivent pas être utilisées conjointement avec ces derniers.

### Raccordements

Les câbles RS232 (console) sont conçus pour un raccordement intra-bâtiment à d'autres appareils. Ne reliez pas ces ports directement à des câbles de communication ou à d'autres câbles qui sortent du bâtiment dans lequel se trouve l'appareil.

### Informations sur l’alimentation électrique

Ce produit est alimenté par le câble Ethernet branché sur le port « LAN1 »; ce type d'alimentation est appelé « alimentation par câble Ethernet » ou « PoE » (Power over Ethernet). La source d'alimentation par câble Ethernet (PoE) utilisée doit impérativement être homologuée UL, porter la mention « Classe 2 » ou « LPS », et avoir une puissance de sortie nominale de 48 V CC, 0,6 A minimum, TA : 40 °C minimum.

Si la sortie d'alimentation par câble Ethernet (PoE) LAN2 est utilisée pour alimenter un appareil conforme à la norme 802.3af, la source d'alimentation par câble Ethernet (PoE) utilisée doit impérativement être homologuée UL, porter la mention « Classe 2 » ou « LPS », et avoir une puissance de sortie nominale de 48 V CC, 1,26 A minimum, TA : 40 °C minimum.

La puissance de sortie d'alimentation du port LAN2 est de 48 V CC, 0,3 A maximum.

## Anforderungen an die Installation

- VERWARNUNG: Für eine ordnungsgemäße Montage sollten die folgenden Hinweise beachtet werden.**

- Wählen Sie für die Montage einen Ort, der keinem direkten Sonnenlicht ausgesetzt ist und sich nicht in der Nähe von Wärmequellen befindet. Die Umgebungstemperatur darf nicht mehr als 60 °C betragen.
- Führen Sie die Kabel nicht entlang von Stromleitungen, Leuchtstoffröhren und Störquellen wie Funksendern oder Breitbandverstärkern.
- Stellen Sie sicher, dass das Gerät vor Wasser und hoher Luftfeuchtigkeit geschützt ist.
- Stellen Sie sicher, dass die Luft um das Gerät herum zirkulieren kann. Hier ist ein Belüftungsabstand von mindestens 26 mm einzuhalten.
- Prüfen Sie den Anschluss des Geräts an die Stromversorgung, damit der Übersstromschutz sowie die elektrische Leitung nicht von einer eventuellen Überlastung der Stromversorgung beeinflusst werden. Prüfen Sie dabei

sorgfältig die Angaben auf dem Aufkleber des Geräts. Überlasten Sie nicht den Stromkreis.

- Dieses Gerät ist nicht zur Verwendung an Arbeitsplätzen mit visuellen Anzeigeräten gemäß §2 der deutschen Verordnung für Arbeitsplätze mit visuellen Anzeigeräten vorgesehen. Um störende Reflexionen am Bildshirmarbeitsplatz zu vermeiden, darf dieses Produkt nicht im unmittelbaren Gesichtsfeld platziert werden.
- Dieses Produkt ist nicht dafür entwickelt, um in Bereichen mit öffentlichem Zugang betrieben zu werden. Wenn es in Schulen betrieben wird, stellen Sie sicher, dass das Gerät in einem abgeschlossenen Raum installiert wird, der nur von speziell ausgebildetem Personal betreten werden kann.

### Kabelverbindungen

RS232-C-Kabel eignen sich für die Verbindung von Geräten in Innenräumen. Schließen Sie an die Anschlüsse der SonicWall keine Kabel an, die aus dem Gebäude herausgeführt werden, in dem sich das Gerät befindet.

### Informationen zur Stromversorgung

Die Stromversorgung durch das Ethernet-Kabel in die “LAN1” - Anschluss angeschlossen vorgesehen ist, wird dies als “Power over Ethernet” oder “PoE.” Dieses Produkt darf nur in Verbindung mit einem für den Europäischen Markt genehmigten und mit dem Logo „LPS.“ Ausgang: 48 VDC Gleichspannung, mind. 0,6 A, mindest TMA mindestens 40° Grad C, betrieben werden. Wenn PoE-Ausgang auf LAN2 verwendet wird, um ein 802.3af-kompatibles Gerät zu versorgen, dieses Produkt darf nur in Verbindung mit einem für den Europäischen Markt genehmigten und mit dem Logo „LPS.“ Ausgang: 48 VDC Gleichsspannung, mind. 1,26 A, mindest TMA mindestens 40° Grad C, betrieben werden.

LAN2 PSE Ausgang ist 48 VDC Gleichsspannung, maximal 0,3 A.

## EU and EFTA

This SonicWall appliance contains radio equipment to provide 2.4 GHz and 5 GHz RLAN/WLAN. To maintain Radio Equipment Directive 2014/53/EU compliance, use only SonicOS software and accessories provided with this appliance and by SonicWall.

Diese SonicWall Appliance enthält Funkanlagen zur Bereitstellung von RLAN/WLAN im Frequenzbereich von 2,4 GHz und 5 GHz. Verwenden Sie zur Einhaltung der Funkanlagenrichtlinie 2014/53/EU (Radio Equipment Directive - RED) ausschließlich SonicOS Software und Zubehör, das mit dieser Appliance und von SonicWall bereitgestellt wird.

To maintain safe exposure levels to electromagnetic fields, place appliance a minimum of 61 cm from all persons and domestic animals.

Zur Einhaltung unbedenklicher Expositionswerte durch elektromagnetische Felder sollte sich die Appliance mindestens 61 cm von Personen und Haustieren entfernt befinden.

### SonicWave 432o RF Transmitter Bands and Power

Frequency Band - MHz	Maximum Radio Frequency Power Transmitted - dBm EIRP
2412 - 2472	19.76
5500 - 5700	29.47

## Simplified EU/CE Declaration of Conformity

A “Declaration of Conformity” in accordance with the directives and standards has been made and is on file at: SonicWall International Limited, City Gate Park, Mahon, Cork, Ireland.

Hereby, SonicWall Inc. declares that the radio equipment type 2.4 GHz and 5 GHz RLAN/WLAN is in compliance with Directive 2014/53/EU. The full text of the EU declaration of conformity is available at the following Internet address: **https://www.SonicWall.com/Support**

Hierbij verklaar ik, SonicWall Inc., dat het type radioapparatuur 2.4 GHz and 5 GHz RLAN/WLAN conform is met Richtlijn 2014/53/EU. De volledige tekst van de EU-conformiteitsverklaring kan worden geraadpleegd op het volgende internetadres: **https://www.SonicWall.com/Support**

Hiermit erklärt SonicWall Inc., dass der Funkanlagentyp 2.4 GHz and 5 GHz RLAN/WLAN der Richtlinie 2014/53/EU entspricht. Der vollständige Text der EU-Konformitätserklärung ist unter der folgenden Internetadresse verfügbar: **https://www.SonicWall.com/Support**

Le soussigné, SonicWall Inc., déclare que l'équipement radioélectrique du type 2.4 GHz and 5 GHz RLAN/WLAN est conforme à la directive 2014/53/UE. Le texte complet de la déclaration UE de conformité est disponible à l'adresse internet suivante: **https://www.SonicWall.com/Support**

С настоящим SonicWall Inc. декларира, че този тип радиосъоръжение 2.4 GHz and 5 GHz RLAN/WLAN е в съответствие с Директива 2014/53/ЕС.

Цялостният текст на ЕС декларацията за съответствие може да се намери на следния интернет адрес: **https://www.SonicWall.com/Support**

Tímto SonicWall Inc. prohlašuje, že typ rádiového zařízení 2.4 GHz and 5 GHz RLAN/WLAN je v souladu se směrnici 2014/53/EU.

Úplně znění EU prohlášení o shodě je k dispozici na této internetové adrese: **https://www.SonicWall.com/Support**

Hermed erklærer SonicWall Inc., at radioudstyrstypen 2.4 GHz and 5 GHz RLAN/WLAN er i overensstemmelse med direktiv 2014/53/EU.

EU-overensstemmelseserklæringens fulde tekst kan findes på følgende internetadresse: **https://www.SonicWall.com/Support**

Με την παρούσα ο/η SonicWall Inc., δηλώνει ότι ο ραδιοεξοπλισμός 2.4 GHz and 5 GHz RLAN/WLAN πληροί την οδηγία 2014/53/ΕΕ.

Το πλήρες κείμενο της δήλωσης συμμόρφωσης ΕΕ διατίθεται στην ακόλουθη ιστοσελίδα στο διαδίκτυο: **https://www.SonicWall.com/Support**

Por la presente, SonicWall Inc. declara que el tipo de equipo radioeléctrico 2.4 GHz and 5 GHz RLAN/WLAN es conforme con la Directiva 2014/53/UE.

El texto completo de la declaración UE de conformidad está disponible en la dirección Internet siguiente: **https://www.SonicWall.com/Support**

Käesolevaga deklareerib SonicWall Inc., et käesolev raadioseadme tüüp 2.4 GHz and 5 GHz RLAN/WLAN vastab direktiivi 2014/53/EL nõuetele. ELi vastavusdeklaratsiooni täielik tekst on kättesaadav järgmisel internetiaadressil: **https://www.SonicWall.com/Support**

SonicWall Inc. vakuuttaa, että radiolaitetyyppi 2.4 GHz and 5 GHz RLAN/WLAN on direktiivin 2014/53/EU mukainen.

EU-vaatimustenmukaisuusvakuutuksen täysimittainen teksti on saatavilla seuraavassa internetosoitteessa: **https://www.SonicWall.com/Support**

SonicWall Inc. ovime izjavljuje da je radijska oprema tipa 2.4 GHz and 5 GHz RLAN/WLAN u skladu s Direktivom 2014/53/EU.

Cjeloviti tekst EU izjave o sukladnosti dostupan je na sljedećoj internetskoj adresi: **https://www.SonicWall.com/Support**

SonicWall Inc. igazolja, hogy a 2.4 GHz and 5 GHz RLAN/WLAN típusú rádióberendezés megfelel a 2014/53/EU irányelvnek.

Az EU-megfelelőségi nyilatkozat teljes szövege elérhető a következő internetes címen: **https://www.SonicWall.com/Support**

Il fabbricante, SonicWall Inc., dichiara che il tipo di apparecchiatura radio 2.4 GHz and 5 GHz RLAN/WLAN è conforme alla direttiva 2014/53/UE.

Il testo completo della dichiarazione di conformità UE è disponibile al seguente indirizzo Internet: **https://www.SonicWall.com/Support**

Aš, SonicWall Inc., patvirtinu, kad radijo įrenginių tipas 2.4 GHz and 5 GHz RLAN/WLAN atitinka Direktivą 2014/53/ES.

Visas ES atitikties deklaracijos tekstas prieinamas šiuo interneto adresu: **https://www.SonicWall.com/Support**

Ar šo SonicWall Inc. deklarė, ka radioiekārta 2.4 GHz and 5 GHz RLAN/WLAN atbilst Direktīvai 2014/53/ES.

Pilns ES atbilstības deklarācijas teksts ir pieejams šādā internetā vietnē: **https://www.SonicWall.com/Support**

B'dan, SonicWall Inc., niddikjara li dan it-tip ta' tagħmir tar-radju 2.4 GHz and 5 GHz RLAN/WLAN huwa konformi mad-Direttiva 2014/53/UE. It-test kollu tad-dikjarazzjoni ta' konformità tal-UE huwa disponibbli f'dan l-indirizz tal-Internet li ġej: **https://www.SonicWall.com/Support**

SonicWall Inc. niniejszym oświadcza, że typ urządzenia radiowego 2.4 GHz and 5 GHz RLAN/WLAN jest zgodny z dyrektywą 2014/53/UE. Pełny tekst deklaracji zgodności UE jest dostępny pod następującym adresem internetowym: **https://www.SonicWall.com/Support**

Prin prezenta, SonicWall Inc. declară că tipul de echipamente radio 2.4 GHz and 5 GHz RLAN/WLAN este în conformitate cu Directiva 2014/53/UE.

Textul integral al declarăției UE de conformitate este disponibil la următoarea adresă internet: **https://www.SonicWall.com/Support**

SonicWall Inc. týmto vyhlasuje, že rádiové zariadenie typu 2.4 GHz and 5 GHz RLAN/WLAN je v súlade so smernicou 2014/53/EU.

Úplně EU vyhlášení o zhodě je k dispozici na tejto internetovej adrese: **https://www.SonicWall.com/Support**

SonicWall Inc. potrjuje, da je tip radijske opreme 2.4 GHz and 5 GHz RLAN/WLAN skladen z Direktivo 2014/53/EU.

Celotno besedilo izjave EU o skladnosti je na voljo na naslednjem spletnem naslovu: **https://www.SonicWall.com/Support**

Härmed försäkrar SonicWall Inc. att denna typ av radioutrustning 2.4 GHz and 5 GHz RLAN/WLAN överensstämmer med direktiv 2014/53/EU.

Den fullständiga texten till EU-försäkran om överensstämmelse finns på följande webbadress: **https://www.SonicWall.com/Support**

- NOTE:** Additional regulatory notifications and information for this product can be found online at: **https://www.sonicwall.com/support/technical-documentation**

## Warranty Information

All SonicWall appliances come with a 1-year Limited Hardware Warranty which provides delivery of critical replacement parts for defective parts under warranty. Visit the Warranty Information page for details on your product’s warranty at **https://www.sonicwall.com/support**.