

# TRENDnet<sup>®</sup>



---

## Quick Installation Guide

### TEW-825DAP(V1)

# Table of Content

---

## **1 English**

1. Before You Start
2. Initial Access Point Setup
3. AP Management Utility
4. Mounting the Device

# 1. Before You Start

---

## Package Contents

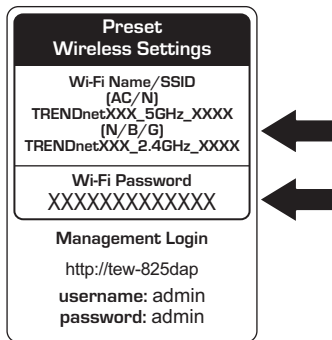
- TEW-825DAP
- 1 x Network cable (1.5m / 5 ft.)
- CD-ROM (User's Guide and Configuration Utility)
- Quick Installation Guide
- Power adapter (12V DC, 1.5 A)
- Mounting plate

## Minimum Requirements

- Computer with network port and web browser
- Network switch or router with an available network port

## 2. Initial Access Point Setup

1. Bring the TEW-825DAP to a location of its final installation point.
2. Connect the TEW-825DAP to your router or switch. You may also connect the device directly to a network port on your computer. If you are connecting to a router or switch, make sure your computer is connected to the same network.
3. If you are connecting your TEW-825DAP to a PoE router or switch, the device will power on automatically. If you are connecting to a computer, or a non-PoE router or switch, you will need to use the included power adapter.
4. To use the power adapter, plug the power adapter into the TEW-825DAP, then plug the adapter into an electrical outlet. Wait 60 seconds, then confirm that the status LEDs on the front of the unit are illuminated. Your TEW-825DAP access point is now active. The device is pre-configured to automatically connect to your network.
5. For your security, each TEW-825DAP comes pre-encrypted with a unique WiFi Name (SSID) and WiFi Password. You can find your device's SSID and WiFi password on the white labels located on the device. Use this information to connect to the TEW-825DAP access point. If the TEW-825DAP is reset, the SSID and WiFi key will also be reset to the default login credentials located on the white label.



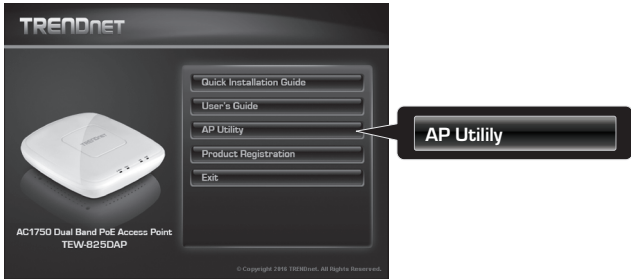
6. No further setup is required, proceed to Section 4 **Mounting the Device**. To change device settings proceed to Section 3 **AP Management Utility**.

### 3. AP Management Utility

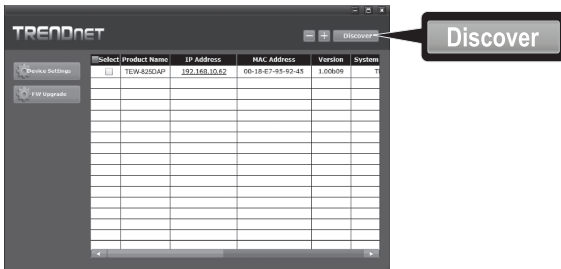
1. Insert the included CD into your computer, and select **AP Utility** from the menu.

**Note:** The AP Management Utility only supports Windows based computers. Please visit TRENDnet.com for complete list of the supported operating systems.

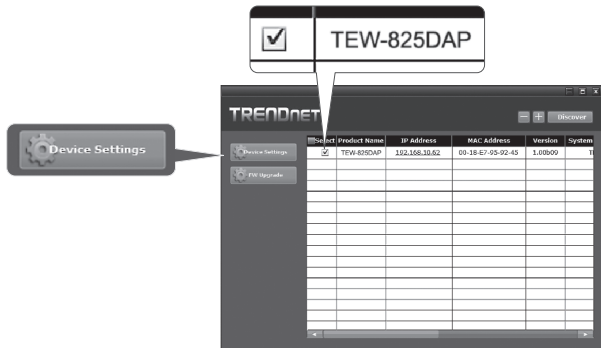
**Mac Users:** Please refer to the User's Guide to manually configure the access point.



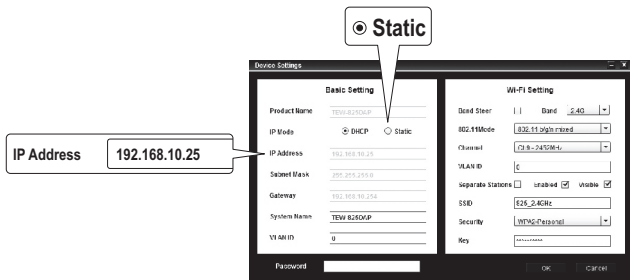
2. Run the utility. The utility will attempt to detect your device automatically. If it does not, click on the **Discover** button.



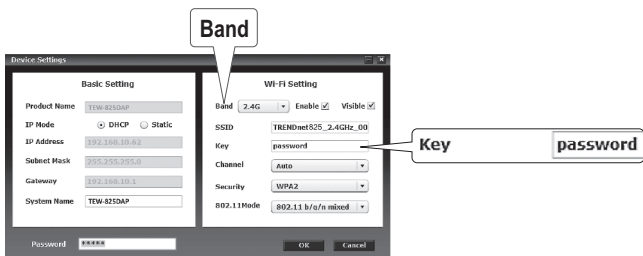
3. Select your device by checking the box next to your TEW-825DAP, and click on **Device Settings**.



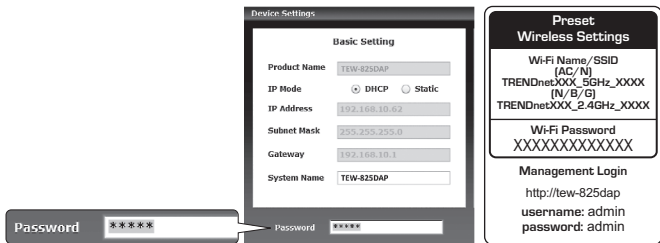
4. The Device Settings page will show your basic Wi-Fi network settings. If your network requires a static IP address, select the **Static** radio button and enter your settings. If you are not sure, leave **IP Mode** on the default setting, **DHCP**.



5. To configure your wireless network, select the Band from the dropdown menu, and enter your settings. If you are using both 2.4GHz and 5GHz networks, they must be configured individually. The Key is your current WiFi password. The default key is located on the white sticker on the bottom of the TEW-825DAP.

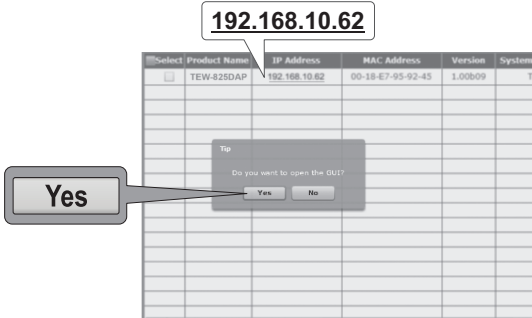


6. When you are finished, enter the AP management password for your TEW-825DAP (default: admin) and click **OK** to save your changes. If this is the first time you are accessing the device, or if the unit has been reset, the default password is admin. The utility will save your settings.



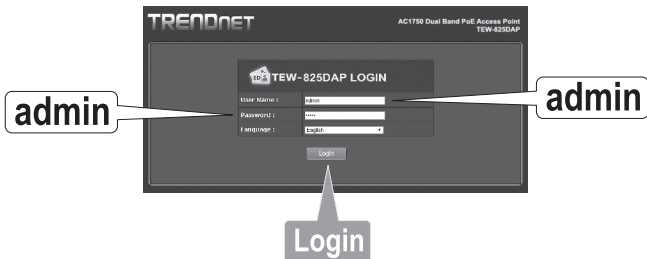
7. If you are using both 2.4GHz and 5GHz networks, they must be configured individually. Repeat steps 2 to 6 to configure your other network.
8. Once your wireless networks are configured, confirm connectivity by logging into your TEW-825DAP WiFi network. If you can successfully connect, your configuration is complete.

9. To access the unit's advanced settings, launch the AP Management utility, locate your TEW-825DAP, click on the IP Address, and select **Yes** to configure your device.



10. This will launch your default web browser, and automatically direct it to your TEW-825DAP for advanced settings.
11. On the Login screen, enter the username and password. If this is your first time accessing the device, or if the TEW-825DAP has been reset, the default login credentials are:

**User Name: admin**  
**Password: admin**



12. Select the desired language, then click **Login** to continue.



13. The status screen will display information about your TEW-825DAP access point, and the unit's wireless networks.

**TRENDNET** AC1750 Dual Band PoE Access Point  
TEW-825DAP

Save/Reload: 0

**Status**

This section displays the device status information.

**System Info**

Device Name	TEW-825DAP
Firmware Version	1.00 , 27, May, 2015
System Time	Wed May, 27, 2015 20:41:54
System Up Time	0 Day, 4:21:40

**Network**

MAC Address	00:18:E7:95:92:45
IP Address	192.168.10.62
Subnet Mask	255.255.255.0
Default Gateway	192.168.10.1
Primary Domain Name Server	192.168.10.1
Secondary Domain Name Server	0.0.0.0

**2.4GHz Wireless**

Operation Mode	Access Point
Wireless Mode	2.4GHz 802.11 b/g/n mixed mode
Channel Width	20/40 MHz
Channel (Frequency)	6

SSID List:

SSID	MAC Address	Security Mode
TRENDnet825_2.4GHz_0045	00:18:E7:95:92:45	WPA2-PSK AES

**5GHz Wireless**

Operation Mode	Access Point
Wireless Mode	5GHz 802.11 a/n/ac mixed mode
Channel Width	20/40/80 MHz
Channel (Frequency)	149

SSID List:

SSID	MAC Address	Security Mode
TESTEST5555	00:18:E7:95:92:46	WPA2-PSK AES

14. For detailed information on advanced settings and features, please refer to the User's Guide.

## 4. Mounting the Device

1. Remove the mounting plate from the TEW-825DAP.



2. Place the mounting plate on the wall or ceiling where the device will be located, and mark the location of the screw holes. Ensure that the device has enough clearance to slide on and off the mounting plate. If it is a non-PoE installation, ensure that your mounting location has access to an electrical outlet.
3. Drill out the marked screw holes, and insert the plastic wall anchors into the screw holes.
4. Secure the mounting plate, using the screws that came with the device.
5. Place the TEW-825DAP on the mounting plate, and attach the network cable. If it is a non-PoE installation, connect the power adapter.



Toll Free English Technical Support  
**US/Canada: 855-373-4741**  
Hours: Monday-Friday  
7:00 AM- 6:00 PM, Pacific Standard Time.  
After hours: 866-845-3673

# Declaration of Conformity

TRENDnet<sup>®</sup>

## Manufacturer's Name and Address

TRENDnet, Inc.  
20675 Manhattan Place  
Torrance, CA 90501 USA



## Product Information

**Model Number:** TEW-825DAP  
**Product Name:** AC1750 Dual Band PoE Access Point  
**Trade Name:** TRENDnet

TRENDnet hereby declare that the product is in compliance with the essential requirements and other relevant provisions under our sole responsibility.

## Safety

EN 60950-1: 2006 + A11: 2009; + A1: 2010 + A12: 2011 + A2: 2013

## EMC

EN 301 489-1 V1.9.2: 09-2011  
EN 301 489-17 V2.2.1: 09-2012  
EN 55032: 2012 + AC: 2013  
EN 55024: 2010

## Radio Spectrum & Health

EN 300 328 V1.9.1: 02-2015  
EN 301 893 V1.8.1: 03-2015  
EN 62311: 2008

## Energy Efficiency

Regulation (EC) No. 1275/2008, No. 278/2009, No. 801/2013

This product is herewith confirmed to comply with the Directives.

## Directives:

Low Voltage Directive 2014/35/EC  
EMC Directive 2014/30/EU  
R&TTE Directive 1999/5/EC  
EMF Directive 1999/519/EC  
Codesign Directive 2009/125/EC  
RoHS Directive 2011/65/EU  
REACH Regulation (EC) No. 1907/2006

Person responsible for this declaration.

Place of Issue: Torrance, California, USA

Date: October 06, 2016

Name: Sonny Su

Title: Director of Technology

Signature:

## **Limited Warranty**

TRENDnet warrants its products against defects in material and workmanship, under normal use and service. Specific warranty periods are listed on each of the respective product pages on the TRENDnet website.

## **Garantie Limitée**

TRENDnet garantit ses produits contre les problèmes de matériel ou de fabrication, dans des conditions normales d'utilisation et de service. Les périodes de garanties précises sont mentionnées sur chacun des pages produits du site web de TRENDnet.

## **Eingeschränkte Garantie**

TRENDnet gewährt eine Garantie für seine Produkte im Falle von Material- und Bearbeitungsdefekten, bei normaler Verwendung und Wartung. Spezielle Garantiezeiträume werden auf jeder Produktseite auf der Website von TRENDnet genannt.

## **Garantía limitada**

TRENDnet garantiza que sus productos carecen de defectos en el material y la fabricación, en condiciones de uso y funcionamiento normales. Los periodos específicos de garantía figuran en cada una de las páginas de producto del sitio web de TRENDnet.

## **Ограниченная гарантия**

Компания TRENDnet предоставляет гарантию на свои изделия от дефектов материалов и сборки при нормальном использовании и обслуживании. Конкретные гарантийные сроки указаны на странице каждого продукта на сайте компании TRENDnet.

## **Garantia Limitada**

A TRENDnet garante seus produtos contra defeitos de material e mão de obra sob condições normais de uso e serviço. Os períodos de garantia específicos estão listados em cada uma das páginas dos respectivos produtos no site da TRENDnet.

## **Piiratud garantii**

TRENDneti garantii hõlmab materjali- ja koostamisdefekte, mis ilmnevad toote tavapärasel kasutamisel. Garantiiaja täpne pikkus konkretse toote puhul on leitav TRENDneti kodulehelt vastava toote infolehel.

## **Garanzia limitata**

TRENDnet garantisce i propri prodotti da difetti di materiali e manodopera, in condizioni di normale uso ed esercizio. I periodi di garanzia specifici sono elencati sulle rispettive pagine di prodotto sul sito TRENDnet.

## Safety notes



Before using your TRENDnet device for the first time, it is essential to read and understand all safety and operating instructions.

Keep instructions in a safe place for future reference. Some TRENDnet products are rated for outdoor applications and can sustain certain weather conditions.

Please refer to the product's Ingress Protection (IP) rating and the operating humidity and temperature range.

### **DANGER due to electricity**

Warning: Never open TRENDnet devices. Doing so poses the risk of electric shock!

The device is voltage free only when unplugging from the mains power supply.

No physical maintenance of TRENDnet devices is required.

If damage occurs, disconnect the TRENDnet device from the power outlet and contact a qualified technician ONLY.

Damage is defined as:

- If the power cable/plug is damaged
- If the device has been submerged in liquid (e.g. rain or water; except products that are rated for outdoor applications)
- If the device is inoperable
- If there is damage to the housing of the device

Only operate TRENDnet devices using a mains power supply.

To disconnect devices from the mains supply, remove the device itself or its mains plug from the power outlet. The power outlet and all connected network devices should be easily accessible so that you can pull the mains plug quickly if needed.

TRENDnet devices are designed for indoor use only and in a dry location (except those that are rated for outdoor applications).

To clean a TRENDnet device, disconnect it from the mains supply first and only use a dry towel.

### **DANGER due to overheating**

Never expose TRENDnet devices to extreme heat (e.g. direct sunlight, fire, or other heat sources). For outdoor rated products, please install the product in an environment that is within the product's operating temperature and humidity range.

Do not interlock multiple TRENDnet devices.

Only install TRENDnet devices in locations with adequate ventilation (slots and openings on the housing are used for ventilation).

- Do not cover TRENDnet devices when operating.
- Do not place any objects on TRENDnet devices.
- Do not insert any foreign objects into the openings of TRENDnet devices.
- Do not place TRENDnet devices next to an open flame (e.g. fire or candles).
- Do not expose TRENDnet devices to direct heat (e.g. radiator or direct sunlight).

## Certifications

This device complies with Part 15 of the FCC Rules.

Operation is subject to the following two conditions:

- (1) This device may not cause harmful interference.
- (2) This device must accept any interference received.

Including interference that may cause undesired operation.



Waste electrical and electronic products must not be disposed of with household waste. Please recycle where facilities exist. Check with your Local Authority or Retailer for recycling advice.

Applies to PoE Products Only: This product is to be connected only to PoE networks without routing to the outside plant.

## Note

The Manufacturer is not responsible for any radio or TV interference caused by unauthorized modifications to this equipment. Such modifications could void the user's authority to operate the equipment.

## Advertencia

En todos nuestros equipos se mencionan claramente las características del adaptador de alimentación necesario para su funcionamiento. El uso de un adaptador distinto al mencionado puede producir daños físicos y/o daños al equipo conectado. El adaptador de alimentación debe operar con voltaje y frecuencia de la energía eléctrica domiciliar existente en el país o zona de instalación.

## Technical Support

If you have any questions regarding the product installation, please contact our Technical Support.

Toll free US/Canada: **1-866-845-3673**

Regional phone numbers available at [www.trendnet.com/support](http://www.trendnet.com/support)

## TRENDnet

20675 Manhattan Place  
Torrance, CA 90501  
USA

## Product Warranty Registration

Please take a moment to register your product online. Go to TRENDnet's website at: [www.trendnet.com/register](http://www.trendnet.com/register)