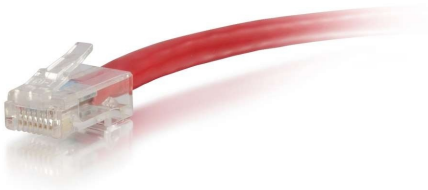


For fast Ethernet and Gigabit computer networks that require bandwidth-intensive voice, data, or video distribution applications. Meets all Cat6 TIA/EIA standards, and drastically reduces both impedance and structural return loss (SRL). Each of the individual pairs is bonded together to help maintain the twist-spacing throughout the line right up to the termination point. Constructed from high quality copper cable, this design minimizes Near-End Crosstalk (NEXT) levels. Available in a variety of colors to easily color-code your network installation.



## Features & Benefits

Designed for network adapters, hubs, switches, routers, HDBaseT applications and more

Supports 10 Gigabit networks up to 180ft for fast data transmission and maximum performance and supports 1 Gigabit up to 328ft

Meets all Cat6 TIA/EIA requirements for supporting a wide variety of applications

Constructed with unshielded twisted pair (UTP) wires, designed to counter EMI, RFI, and crosstalk

Available in a variety of colors to color-code a network

## Specifications

### General Info

Product Line	C2G	Replaced by Part Number	27184, 04160
Color	Red	UPC Number	757120041597
Country Of Origin	Vietnam	Features	PoE (Power Over Ethernet)
Application Sector	Commercial, Industrial, Residential	Warranty Type	Lifetime
Type	Cable		

### Dimensions

Product Length US	14.0 FT	Cable Length	14 ft
-------------------	---------	--------------	-------

### Listing Agencies / 3rd Party Agencies

---

CE Certified	Yes	REACH Compliant	Yes
--------------	-----	-----------------	-----

---

### Additional Information

---

RoHS Conformant	Yes
-----------------	-----

---

### Technical Information

---

Jacket Material	PVC (Polyvinyl Chloride)	Wire Gauge	24 AWG
-----------------	--------------------------	------------	--------

---

Cable Type	Ethernet Patch Cable, Unbooted, Unshielded (UTP)	Jacket Rating	Standard / Non-Rated
------------	--	---------------	----------------------

---

Cable Diameter	6 mm	Adapter Rear	RJ-45 Male
----------------	------	--------------	------------

---

Adapter Front	RJ-45 Male
---------------	------------

---