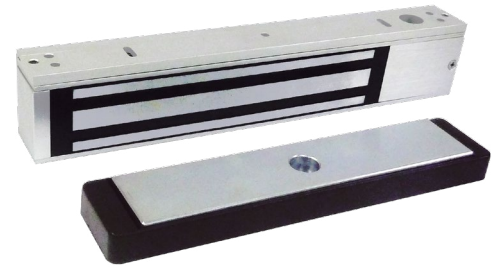


350 Series

Narrow Electromagnetic Locks



SDC's 350 series narrow electromagnetic locks provide 1200lbs holding force and failsafe access control for perimeter and interior doors that meet building security and fire life safety code requirements. The 350 series is specifically designed for high profile openings that require less obtrusive surface mount lock with architecturally superior appearance.

Unlike typical surface mount magnetic locks that project 3 to 3½" inches into openings, the 350 series lock projects only 2 1/16" into the opening, enabling it to blend in exceptionally well with virtually any narrow frame. The best solution available to maintain the architectural aesthetics of high profile door entrances.

Designed to ensure trouble free interface with electronic access control systems, automatic door operators, peripheral equipment and fire life safety systems for emergency release. Bond alert status (BAS), door position status (DPS) and visual status indicators (LED) are standard, enabling distributors to stock one lock and eliminate need for special orders.

An internal wire chamber with PC board mounted terminal blocks permits wiring before or after lock mounting. Interlocking quick mount brackets leave hands free for fast, easy screw fastening and wiring, eliminating awkward simultaneous holding and fastening of lock. Captive lock mounting screws provide additional convenience and speed. The armature housing prevents sagging, provides quieter operation and superior appearance.

Retrofits existing Locknetics 350+ installation without replacing the original armature or additional modifications.



MODELS

- 350** Single Narrow Magnetic Lock, 1200lbs
- 352** Double Narrow Magnetic Lock, 1200lbs



STANDARD FEATURES

- Retrofits existing Locknetics 350+*
- Narrow housing designed for narrow frames
- Wire access chamber with terminal block
- Interlocking quick mount assembly
- Field selectable dual voltage
- Voltage and current spike protection
- Captive lock mounting screws
- Door position status (DPS)
- Bond alert status (BAS)
- Visual status indicator (LED)

* Locknetics, Magforce, 350+ and 352+ trademarks belong to Ingersoll Rand and Schlage Lock. SDC is not part of or affiliated with Ingersoll Rand, Schlage Lock company or any of their affiliates.



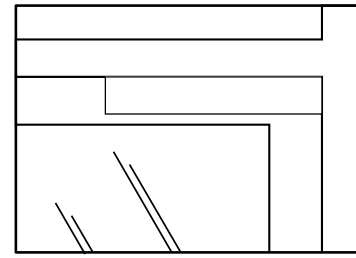
APPLICATIONS

RETROFITS DISCONTINUED LOCKNETICS 350+

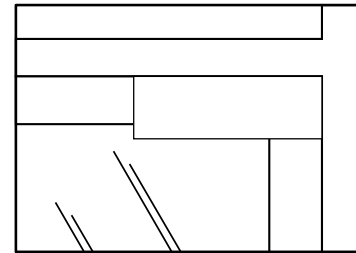
The 350 series retrofits the discontinued Locknetics 350+ magnetic lock without modifications. Since the Locknetics manufacturing facility is now closed, SDC's 350 series has been designed to utilize the same mounting template, physical dimensions and features. Plus, the SDC 350 series includes additional features such as full monitoring and interlocking quick mounting for faster installation.

NARROW APPLICATIONS

350 narrow magnetic lock models compatible with single, inswinging or outswinging, hollow metal, aluminum and wood doors and frames and glass doors. 352 models are compatible with pairs of inswinging or outswinging, hollow metal, aluminum and wood doors and frames and glass doors without mullions.

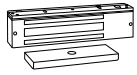


350 Series



Conventional Magnetic Locks

CROSS REFERENCE



1510

1570

1580

E1200

E600

E6200

| | 1510 | 1570 | 1580 | E1200 | E600 | E6200 |
|----------------------|--------------------------------|--------------------------------|----------|-----------|----------|-----------|
| Maglock Type | Standard | Standard | Standard | Standard | Standard | Standard |
| Trademark | EMLock® | EMLock® | EMLock® | Excel™ | Excel™ | ----- |
| Warranty | Lifetime | Lifetime | Lifetime | 5 Year | 5 Year | 5 Year |
| Holding Force | 1,650 lbs | 1,200 lbs | 650 lbs | 1,200 lbs | 600 lbs | 1,200 lbs |
| Single | 1511 | 1571 | 1581 | E1200 | E600 | E6200 |
| Double | 1512 | 1572 | 1582 | ----- | ----- | ----- |
| Monitoring | Optional or Field Upgrade Kits | Optional or Field Upgrade Kits | Optional | Standard | Standard | Standard |

[CLICK TO VIEW](#)

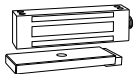
[CLICK TO VIEW](#)

[CLICK TO VIEW](#)

[CLICK TO VIEW](#)

[CLICK TO VIEW](#)

[CLICK TO VIEW](#)



350

1590

1575 / 1576

E300

EP17624

| | 350 | 1590 | 1575 / 1576 | E300 | EP17624 |
|----------------------|-----------|---------------|-----------------|-----------|-----------------------|
| Maglock Type | Specialty | Specialty | Specialty | Specialty | Specialty |
| Application | Narrow | Sliding Doors | Outdoor Gates | Cabinets | Hazardous |
| Weatherized | ----- | ----- | Yes | ----- | Explosion Proof |
| Holding Force | 1,200 lbs | 850 lbs | 1,200 lbs | 300 lbs | 600 lbs |
| Single | 350V | 1591U | 1575U, 1576U | E300 | EP17624, EP17624TJ |
| Double | 352V | ----- | ----- | ----- | ----- |
| Monitoring | Standard | Optional | Standard | Standard | Standard |

[CLICK TO VIEW](#)

[CLICK TO VIEW](#)

[CLICK TO VIEW](#)

[CLICK TO VIEW](#)

[CLICK TO VIEW](#)



SPECIFICATIONS

| | 350 | 352 |
|-----------------------------------|---|--|
| Housing | Aluminum | Aluminum |
| Door Type | Swing, Single | Swing, Double |
| Holding Force | 1,200 lbs | 1,200 lbs |
| Dimensions | 12½" x 2½" x 1½" Housing 10⅞" x 2" x ⅞" Armature | 25" x 2½" x 1½" Housing 10⅞" x 2" x ⅞" Armature |
| Weight | 10 lbs | 19 lbs |
| Input | 12/24 VDC ± 10% Field Selectable | 12/24 VDC ± 10% Field Selectable |
| Current Draw | 309 mA @ 24 VDC 560 mA @ 12 VDC | 618 mA @ 24 VDC 1.02 Amps @ 12 VDC |
| Door Position Status (DPS) | SPDT 250 mA @ 30 VDC Resistive | SPDT 250 mA @ 30 VDC Resistive |
| Bond Alert Status (BAS) | SPDT 1 Amp @ 30 VDC Resistive | SPDT 1 Amp @ 30 VDC Resistive |



350V



352V


CERTIFICATIONS

UL 864 Control Units and Accessories for Fire Alarm Systems
 ULC-S527 Control Units for Fire Alarm Systems
 ANSI/BHMA A156.23 Grade 1

HOW TO ORDER

FOLLOW STEPS FOR ORDERING

 Designates optional step

| | | | | | | | |
|---|--|--------------|---|---|-------------------|------------|----------|
| <p>1 SPECIFY MODEL</p> <p>350 Single Narrow Magnetic Lock, 1200lbs 352 Double Narrow Magnetic Lock, 1200lbs</p> | <p>2 SPECIFY FINISH</p> <p>V 628 Dull Aluminum  Standard</p> | | | | | | |
| <table border="1"> <tr> <td style="background-color: #003366; color: white;">STEP NUMBER:</td> <td style="text-align: center;">1</td> <td style="text-align: center;">2</td> </tr> <tr> <td>ORDERING EXAMPLE:</td> <td style="text-align: center;">350</td> <td style="text-align: center;">V</td> </tr> </table> | | STEP NUMBER: | 1 | 2 | ORDERING EXAMPLE: | 350 | V |
| STEP NUMBER: | 1 | 2 | | | | | |
| ORDERING EXAMPLE: | 350 | V | | | | | |

RELATED PRODUCTS

TOP JAMB MOUNTING KITS

Accommodate the installation of a standard magnetic lock to the pull-side of hollow metal door openings.

- TJ350** Top Jamb Kit, Single
- TJ352** Top Jamb Kit, Double



GLASS DOOR MOUNTING KITS

Accommodate the installation of the lock armature assemblies to glass doors without top rails. Field adjustable for 1/2", 5/8" and 3/4" glass herculite doors.

- HDB350V** 2 1/2" x 1 1/2" x 9 7/8"
- HDB352V** 2 1/2" x 1 1/2" x 9 7/8", Qty 2

