

1 Port FTDI USB to Serial RS232 Adapter Cable with COM Retention

Product ID: ICUSB2321F



The ICUSB2321F 1-Port USB to Serial RS232 Adapter Cable with FTDI chipset and COM Retention converts an available USB 1.1 or 2.0 port into an RS232 serial DB9 port to connect, monitor and control your serial devices.

This compact adapter features COM retention, allowing the same COM port value to automatically be re-assigned to the port if the cable is disconnected and re-connected to the host computer, or if the system is rebooted. The ICUSB2321F uses the FTDI chipset which supports additional customization, advanced features, and compatibility not necessarily offered by other solutions.

Compatibility with a broad list of Operating Systems including Windows, Windows CE, Mac OS and Linux, makes this product easy to integrate into mixed environments.

Backed by a StarTech.com 2-year warranty and free lifetime technical support.

Certifications, Reports and Compatibility

Applications

- Perfect for IT Administrators looking to add legacy functionality to newer notebooks, PCs and servers that lack an integrated RS232 port
- Connect, monitor and control industrial/automotive sensors and equipment
- Connect bar code scanners, receipt printers and other point of sale devices
- Connect and program LED and Digital signage boards with serial communication ports
- Connect a satellite receiver, serial modem, or PDU

Features

- Integrated FTDI USB UART Chip
- Baud Rate up to 115.2Kbps
- COM Port assignments maintained across reboot
- Powered by the USB port - no external power adapter required
- Single cable design for portability
- Designed to make serial port expansion quick and easy
- Compatible with Windows, Mac OS and Linux
- 6-foot cable length for connecting to devices without having to be too close
- USB to Straight-Through RS232 Serial Adapter

Hardware

Warranty	2 Years
Ports	1
Interface	Serial
Bus Type	USB 2.0
Port Style	Cable Adapters
Chipset ID	FTDI - FT232RL

Performance

Serial Protocol	RS-232
Max Baud Rate	115.2 Kbps
Data Bits	7, 8
FIFO	256 Bytes
Parity	None, Odd, Even, Mark, Space
Stop Bits	1, 2
MTBF	836981.2 hours

Connector(s)

Connector Type(s)	DB-9 (9 pin, D-Sub)
	USB Type-A (4 pin) USB 2.0

Software

OS Compatibility	Windows CE (4.2, 5.0, 6.0), XP Embedded, 98SE, 2000, XP, Vista, 7, 8, 8.1, 10
	Windows Server 2003, 2008 R2, 2012, 2012 R2, 2016, 2019
	macOS 10.6 to 10.15, 11.0
	Linux Kernel 3.0.x - 5.4.x (LTS Versions Only)

Special Notes / Requirements

System and Cable Requirements	One available USB 1.1 (or better) port
-------------------------------	--

Power

Power Source	USB-Powered
--------------	-------------

Environmental

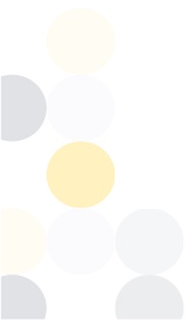
Operating Temperature	0C to 55C (32F to 131F)
Storage Temperature	-20C to 85C (-4F to 185F)
Humidity	5~95% RH

Physical Characteristics

Color	Black
Material	Plastic
Cable Length	6.0 ft [1.8 m]
Product Length	1.8 in [45 mm]
Product Width	1.6 in [41.5 mm]
Product Height	0.9 in [22 mm]
Weight of Product	3.2 oz [90 g]

Packaging Information

Package Length	6.9 in [17.5 cm]
----------------	------------------



Package Width	5.7 in [14.5 cm]
Package Height	1.3 in [32 mm]
Shipping (Package) Weight	6.2 oz [176 g]

What's in the Box

Included in Package	USB to RS-232 Serial Adapter
	Driver CD
	Instruction Manual

****Product appearance and specifications are subject to change without notice.***

