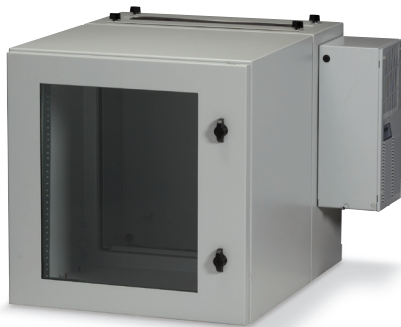


## Climate-Controlled Cabinets

- Cool the cabinet, not the room.
- No plumbing required.
- NEMA 12 rated.



12U Wallmount  
800 BTU



24U 8000 BTU



42U 12,000 BTU

# Wallmount ClimateCab Cabinets

## Secure protection for any location.

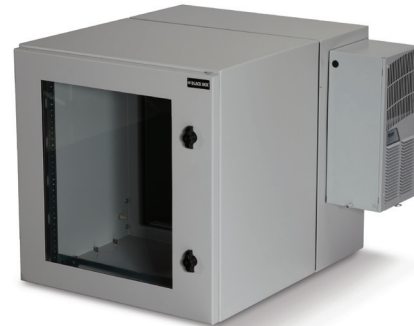
When you need to install rackmount equipment in less-than-ideal environments or in areas without existing cooling infrastructure, ClimateCab NEMA 12 Wallmount Cabinets are your answer. Their self-contained cooling system keeps your equipment housed in ideal conditions in virtually any location.

On the double-hinged models, the cabinet swings away from either a front or a rear door, enabling access to the rear of your equipment. Single-hinged models in which only the front door opens are also available.

- NEMA 12 rated for protection against falling dirt, circulating dust, lint, debris, and splashing liquids in indoor environments.
- Includes 19" rails with M6 mounting holes.
- Scratch-resistant safety glass window provides easy viewing.
- Fully welded body and door construction.
- Robust 12-gauge frame and 14 or 16 gauge sides and doors. Seamless door gaskets keep out dust and contaminants.
- Save energy and money by cooling only the cabinet rather than the whole room or IT center.



*ClimateCab with Air-Conditioning*



*ClimateCab with Air-Conditioning and Gland Plates*

## Additional Features

The cabinet includes 10-32 tapped rails and twenty 10-32 screws. Optional square-holed rack angles are available for equipment mounting flexibility. Convenient studs are provided on the door and body for bonding and grounding.

The cabinet is finished in 7035 RAL light gray, textured, low-gloss polyester powder paint. Other paint finishes are available. The window is made from clear scratch- and impact-resistant safety glass.



*ClimateCab with Fan*

## Product Selection Guide | Wallmount ClimateCab

Size	Hinge	Exterior Height	Cabinet Width	Total Width	Exterior Depth	Equipment Depth	Weight Capacity	AC Size (BTU)	Product Code
12U	Single	24"	24"	30.3"	24"	21.2"	100 lb.	800 BTU (235 W)	RMW5130AC-R2
	Double			30.3"	29.1"	26.4"		800 BTU (235 W)	RMW5110AC-R2
	Double			30.3"	29.1"	26.4"		800 BTU (235 W)	RWM5110ACG-R2
	Single			24"	24"	21.2"		Fan/Ambient Air	RMW5120AF
	Double			24"	24"	21.2"		Fan/Ambient Air	RMW5100AF

## Save by cooling only the cabinet, not the entire room.

- Ideal for indoor use when you need to keep your servers outside a climate-controlled data center.
- Digitally controlled air conditioners are available in 5000, 8000, and 12,000 BTUs (1465, 2344, and 3516 W) and in 120V or 230V (other models available upon request).
- NEMA 12 rated for protection against falling dirt; circulating dust, lint, and debris; and dripping or splashing liquids in indoor environments.
- Fully gasketed openings, including a gland plate in the base, help to protect your devices from dust and other contaminants.
- PLEXI-GLAS® window in front door.
- Fully welded 12-gauge steel frame holds up to 1500 pounds (680 kg).
- Three-point locking handles on front and rear doors.
- Feature standard 19" rails.
- Include casters and levelers for easy placement.
- Rack angles are adjustable front to rear.

The ClimateCab NEMA 12 Cabinet is your answer when you need to house servers or IT equipment but don't have a cooling infrastructure in place. In smaller installations, you can save thousands by using a ClimateCab cabinet instead of installing a complete data center with a custom cooling system and raised floors.

ClimateCab is sealed against dripping water and dust, too. Sealed cable entries prevent air exchange. The digitally controlled air-conditioning unit (included) keeps your equipment comfortably cool. Just install your equipment, plug in the AC unit, and you have a complete, self-contained, self-supporting data center!

The air-conditioning unit helps to control the temperature inside your ClimateCab by removing the heat buildup created by hot network devices. This unit uses closed-loop cooling in which the clean air inside the cabinet is kept separate from the ambient air to protect delicate components from humidity, dust, and other contaminants.

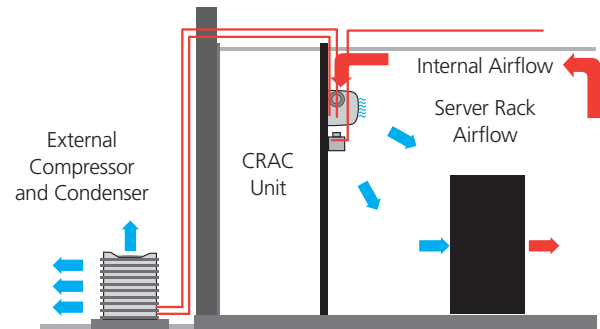
The AC mounts in the side of the cabinet in minutes with eight bolts and can easily be installed by one or two people. Mounting hardware, gaskets, and instructions are included.



Included AC unit mounts on the side of the ClimateCab cabinet. Installation takes about five minutes. CC42U5000T: left: front view; right: rear view.

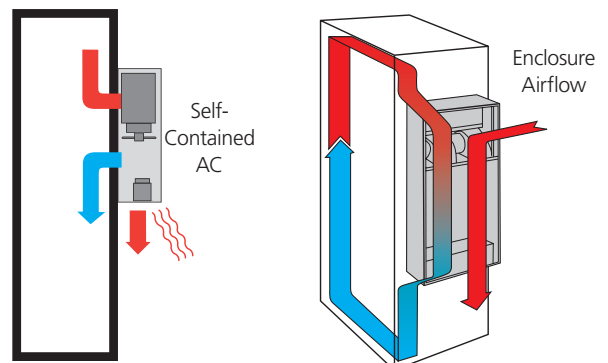
## Without ClimateCab

- Compressor, air handler, and pump all require dedicated electrical circuits.
- Piping and wiring installation can be disruptive.
- Air conditioners need a drain for condensate.
- Project can take weeks to implement and require contractors.
- Inefficient cooling wastes money.



## With ClimateCab cooling equipment is simple.

- Put the cabinet where you want it and plug it in.
- No need for piping, wiring, or a drain.
- ClimateCab is efficient, self-contained cooling that doesn't waste your money cooling an entire room.



### What's included

- ClimateCab NEMA 12 Cabinet with M6 or Tapped Rails
- 5000-, 8000-, or 12,000-BTU air-conditioning unit
- Hardware to mount the AC to the cabinet ([8] mounting bolts, [8] steel washers, and a gasket kit) and Instructions

# ClimateCab Cabinets

## Product Selection Guide | ClimateCab Kits

Size	Depth (inches)	Rail Type	Power (V)	AC Size (BTU)	Code
24U	31.5	M6	120	5000	CC24U5000M631-R2
	40	M6	120	5000	CC24U5000M640-R2
	40	M6	230	5000	CC24U5000M640-23
	31.5	M6	120	8000	CC24U8000M631-R2
	40	M6	120	8000	CC24U8000M640-R2
	36	M6	120	8000	CC24U368000M6
42U	42	M6	120	5000	CC42U5000M6-R2
	31.5	Tapped	120	5000	CC42U5000T-R2
	40	M6	230	5000	CC42U5000M6-230-R2
	40	Tapped	230	5000	CC42U5000T-230-R2
	42	M6	120	8000	CC42U8000M6-R2
	31.5	Tapped	120	8000	CC42U8000T-R2
	40	M6	230	8000	CC42U8000M6-230-R2
	31.5	Tapped	230	8000	CC42U8000T-230-R2
	42	M6	120	12,000	CC42U12000M6-R2
	31.5	Tapped	120	12,000	CC42U12000T-R2
	40	M6	230	12,000	CC42U12000M6-230-R2
	31.5	Tapped	230	12,000	CC42U12000T-230-R2

© Copyright 2014. Black Box Corporation. All rights reserved. Printed in U.S.A. Black Box® and the Double Diamond logo are registered trademarks of BB Technologies, Inc. Any third-party trademarks appearing in this brochure are acknowledged to be the property of their respective owners.

BR00113-ClimateCab\_v4