



Quick Start Guide

USB to Serial Adapter

GUC232A

PART NO. Q0248-b

www.iogear.com

Package Contents

- 1 USB to Serial Adapter
- 1 Quick Start Guide
- 1 Warranty Card

System Requirements

Macintosh

- Mac OS X 10.2 or Later
- Available USB Port

PC

- Windows® 7/8.1/10*
- Available USB Port

Driver Installation

Please download the driver from

http://iogear.custhelp.com/app/answers/detail/a_id/1026

Overview

- Full Compliance with USB specification v1.1
- Works with serial GPS devices, converts the serial interface on your GPS unit into USB
- For use with PDAs, Cellular Phones, Digital Cameras, Dial-up Modems, ISDN Terminal Adapters, and other Serial Components.
- Converts serial devices to USB
- Supports the RS 232 Serial interface standard
- Supports automatic handshake mode
- Over 921.6Kbps data transfer rate
- Supports remote wakeup and power management
- Provides a 96 byte buffer for each upstream and downstream data transfer
- Easy Installation

*Older serial number ranges may not work with Windows 8/8.1

Windows Installation Procedure

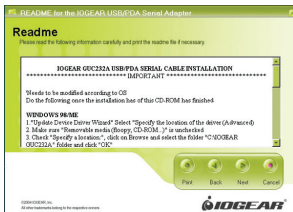
2

For Windows 7/8.1/10

Note: Please do not plug in the USB to Serial Adapter until after you have completed the following instructions.

1. Download the driver from IOGEAR website.

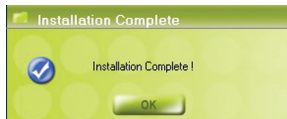
2. You will see the README for the IOGEAR installation.



3. After you click **Continue**, you will be presented with the End User Agreement of the IOGEAR USB to Serial Adapter. It is strongly suggested that you read in the End User Agreement in its entirety. Once you have finished reading, you may select "I accept the terms in this License Agreement" if you wish to continue the installation procedure.



4. You will now begin the installation procedure.
Click **Start**.
5. The installation procedure will begin.
6. You have finished installing the drivers for your IOGEAR USB to Serial Adapter.



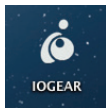
To Configure your Serial Device:

1. Open **device manager** on your Windows computer or laptop.
2. Expand the **Ports** (COM & LPT) tab. You should see your device listed as an ATEN USB to Serial Bridge assigned to a COM Port.
3. To configure your serial device, right click on this device and select **Properties**.

Mac OS X Installation Procedure

Note: Please do not plug in your IOGEAR USB to Serial Adapter until after you have completed the below instructions.

1. Download the corresponding driver version from www.iogear.com/support



2. Double Click on download package driver, (using PL2303_1.0.8.pkg in this example).

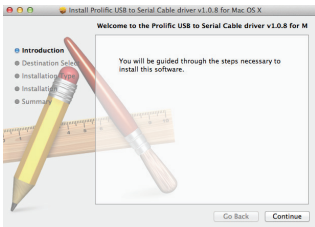


PL2303_1.0.8.pkg

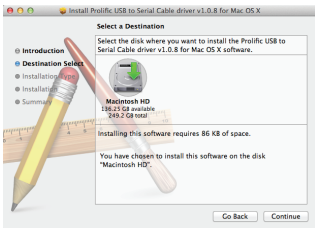
Mac OS X Installation Procedure

5

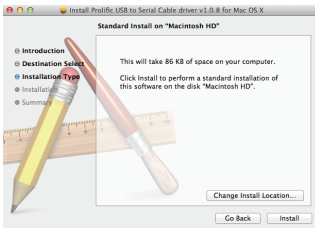
3. The USB to Serial Cable driver installation will appear. Click **Continue**.



4. You will now be asked where you would like to install the driver package. Select the Hard Disk that contains your Mac OS X (or "10") partition, then click **Continue**.



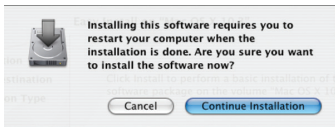
5. You will now be asked if you wish to perform a basic installation of the software package on your Mac OS X volume. Click **Install**.



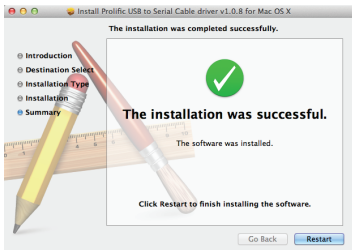
6. You will now be asked for your Mac OS X login password. This is the password used when setting up your Macintosh computer. If you do not know what it is, please contact your network administrator. Once you have entered your password, click **OK**.



7. A small prompt will appear, letting you know that your computer will be restarted after installation has been completed. Click **Continue Installation**.



8. Once the installation procedure is completed, click **Restart**.



Configuring your Serial Device:

Go to the **Settings**, **Preferences**, or **Setup** of the software you are using with your device and check which port is selected; you will want to change it to the "USB serial-port".

Note: If you are having issues configuring your device, try restarting your computer.

Compliance Information

CA Prop 65 WARNING: This product may contain chemicals known to the State of California to cause cancer, birth defects, or other reproductive harm.

Federal Communication Commission Interference Statement

This equipment has been tested and found to comply with the limits for a Class B digital service, pursuant to Part 15 of the FCC rules. These limits are designed to provide reasonable protection against harmful interference in a residential installation. Any changes or modifications made to this equipment may void the user's authority to operate this equipment. This equipment generates, uses, and can radiate radio frequency energy. If not installed and used in accordance with the instructions, may cause harmful interference to radio communications. However, there is no guarantee that interference will not occur in a particular installation. If this equipment does cause harmful interference to radio or television reception, which can be determined by turning the equipment off and on, the user is encouraged to try to correct the interference by one or more of the following measures:

- Reorient or relocate the receiving antenna
- Increase the separation between the equipment and receiver
- Connect the equipment into an outlet on a circuit different from that to which the receiver is connected
- Consult the dealer or an experienced radio/TV technician for help

FCC Caution: Any changes or modifications not expressly approved by the party responsible for compliance could void the user's authority to operate this equipment.

Limited Warranty

WE'RE HERE TO HELP YOU!

NEED ASSISTANCE SETTING UP THIS PRODUCT?

Make sure you:

1. Visit www.iogear.com for more product information
2. Visit www.iogear.com/support for live help and product support

Warranty Information

This product carries a 3 Year Limited Warranty. For the terms and conditions of this warranty, please go to <http://www.iogear.com/support/warranty>

Register online at <http://www.iogear.com/register>

Important Product Information

Product Model _____

Serial Number _____

Contact

iogear.custhelp.com
support@iogear.com
www.iogear.com