



Imation USB 2.0 Swivel Flash Drive – User Guide ReadMe

Getting Started

Plug the Imation USB 2.0 Swivel Flash Drive directly into the computer's USB port or attach the included USB extension cable and plug the cable into the computer's USB port.

LED Indicator

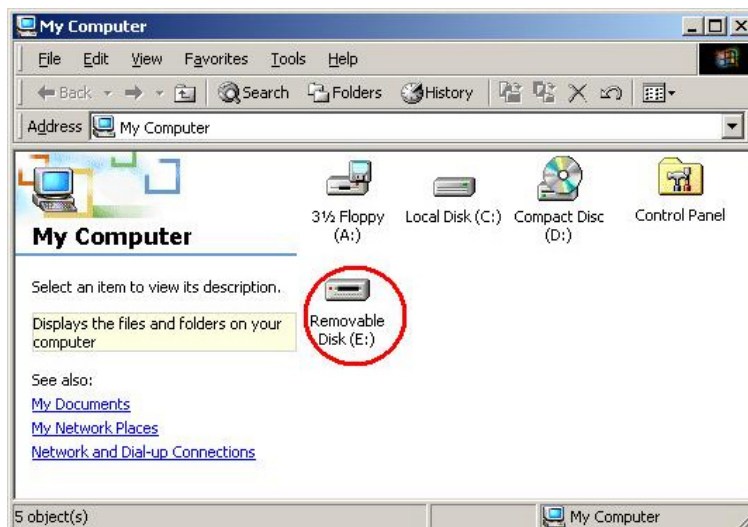
When inserted into the computer port, the Imation USB 2.0 Swivel Flash Drive's LED will flash on and off repeatedly. In standby mode, it will flash once a second. During the reading and writing of data, the LED will flash continuously.

The Imation USB 2.0 Swivel Flash Drive can input/output and edit/delete data immediately after it is connected to the port.

Driver Installation (Windows 98SE only)

Download the driver from the Imation web site (<http://www.imation.com/downloads/>) and save the downloaded file to your desktop. Click on the driver icon, choose setup, then follow the instructions on setup menus.

After installation, your PC will recognize the Imation USB 2.0 Swivel Flash Drive as a Removable Disk, as shown below:



Unplug the Imation USB 2.0 Swivel Flash Drive after the driver has been installed, and then plug it back in for normal operation.