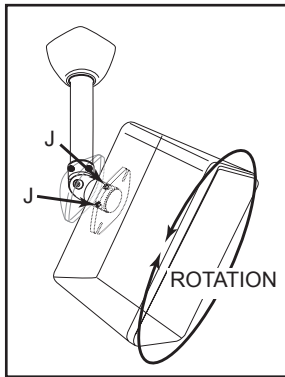


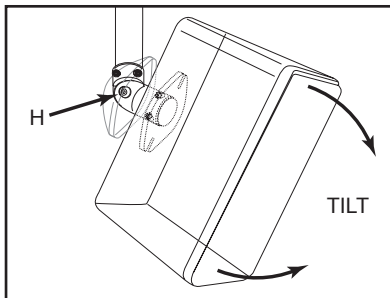
#### ATTACHING SPEAKER ASSEMBLY TO EXTENSION

Install The plastic speaker plate cover (G) onto speaker plate link assembly installed on speaker cabinet. Carefully align the link assemblies together using the threaded binder nut (I) as a guide. Using the 5/16\"-18 button head link screw (H), join the link assemblies together. Set your approximate tilt angle, being sure serrations are fully aligned at joint. Tighten the 5/16\"-18 button head link screw using the supplied 3/16\" allen wrench.



#### ADJUSTING SPEAKER ALIGNMENT - ROTATION

You must first pull back the plastic speaker plate cover (G) to expose the link cap screws (J). You can adjust the rotation of the speaker by loosening the 1/4\"-20 socket head cap screws (J) on the link assembly. Loosen these screws slightly using the 3/16\" allen wrench (O). Adjust speaker to desired position and re-tighten the link cap screws (J).



#### ADJUSTING SPEAKER ALIGNMENT - TILT

You can adjust the tilt of the speaker by loosening the 5/16\"-18 button head link screw (H) on the link assembly. Loosen the screw slightly using the 3/16\" allen wrench (O). **CAUTION: Make sure you support the weight of the speaker as you loosen screw.** Adjust speaker to desired position and re-tighten the button head link screw (H).



Finished Product

rev 08/24/05

# Installation Instructions Bookshelf Series Extended Speaker Mount-Model BKPSPE



**CAUTION: RECOMMENDED HARDWARE PROVIDED IS DESIGNED FOR SPEAKER WEIGHTS INDICATED. INSTALLER MUST CONSIDER THE INTEGRITY AND DESIGN OF THE SPEAKER CABINET. SOME INSTALLATIONS MAY REQUIRE THE INSTALLATION OF A THROUGH BOLT AND REINFORCEMENT BACKING IF SPEAKER CABINET DESIGN WILL NOT SUPPORT SPEAKER WEIGHT.**

### PARTS LIST

Assembled at Factory

A	Wall Plate / Ceiling / Speaker Plate	4
B	Coupler Link	4
C	Extension Tube	2
D	Plastic Wall Plate Cover	2
E	Link	4
F	Link Cap	4
G	Plastic Speaker Plate Cover	2
H	5/16\"-18 x 3/4\" button head link screw	2
I	5/16\"-18 serrated binder nut (with id. mark)	2
J	1/4\"-20 x 1\" socket head cap screw	16

Bagged Hardware Kit

K	#14 x 2\" self tapping screw	4
L	#14 x 1\" self tapping screw	4
M	1/4\"-20 x 3/4\" machine screw	4
N	Toggler@Alligator anchors	4

#### REQUIRED TOOLS

## SoundGear™

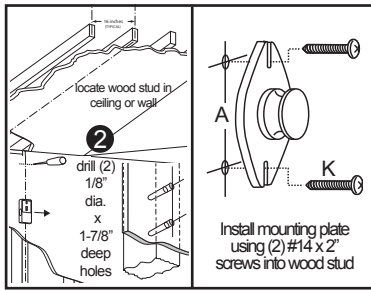
### Maximum weight load 25 lbs.

#### WARRANTY INFORMATION

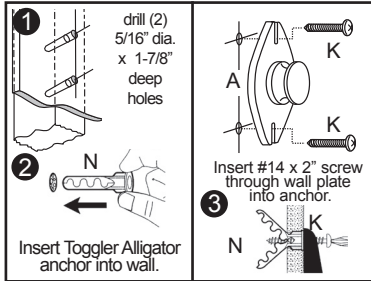
All Vantage Point Products Corp. products are manufactured to ensure superior quality, performance and durability for a lifetime of use. Warranty covers the product to be free of defects in materials and workmanship under normal and reasonable use. Vantage Point Products will repair or replace, at our option, any product which proves to be defective upon our inspection. This warranty will not apply to products that have been lost or damaged by misuse, abuse or accident, altered or repaired in any way or by any person or firm other than specified by us, used in violation of instructions or incorrect assembly nor used in a manner other than specified by us. This warranty is nontransferable to a new owner and may require proof of purchase. All claims must be directly handled with Vantage Point Products Corp. by calling us at 1-800-582-9595.

"TOGGLER is a registered trademark of Merchandise Plastics Corp." ALLIGATOR® ANCHOR "Patented under US Patent numbers 4,181,061; 4,752,170 and 5,161,296 and foreign counter parts thereof. Other patents pending"

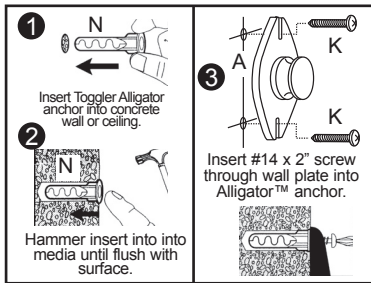
Vantage Point Products Corp • P.O. Box 2485 Santa Fe Springs, CA 90670 USA  
 USA Tel: 1.800.582.9595 • Canada Tel: 905.607.9994 • Europe Tel: 31.72.581.6056  
 Web Site: www.vanptc.com • Email: cons-serv@vanptc.com



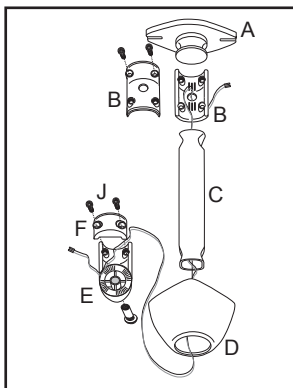
**SOLID WOOD OR WOOD STUD** - Using a stud finder locate the wood stud or framing member. Using a pick or small drill bit locate the center of the wood stud, be careful doing this as you don't want to go any wider than the width of the Speaker Wall Plate (A) (wall plate will cover any extra holes) Using the wall plate as a template mark hole position on mounting surface (see fig. 1) **NOTE: In wall mounting applications position mounting holes in a vertical pattern.** Drill holes through the drywall and into the wood stud using a 1/8" drill bit. These holes should be drilled no less than 1-7/8" deep (see fig 2) You can accomplish this by placing a piece of tape at 1-7/8" from the end of the drill bit providing you with a guide. After holes are drilled, mount the wall plate using the #14 x 2" self tapping screws (L).



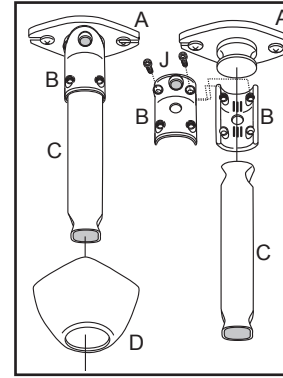
**SOLID CONCRETE OR HOLLOW BLOCK** - Using the speaker wall plate (A) as a template mark hole position on mounting surface (see fig. 1) **NOTE: In wall mounting applications position mounting holes in a vertical pattern.** (see fig. 3) Drill holes in the solid concrete or hollow block using a 5/16" masonry drill bit. Once holes are drilled insert the #14 TOGGLER® ALLIGATOR anchors (N) into the holes making sure anchor is flush with wall or ceiling surface (see fig. 2) With TOGGLER® ALLIGATOR anchors in place, mount the wall plate using the #14 x 2" self tapping screws (K) (see fig. 3)



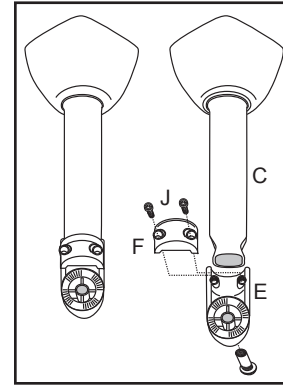
**HOLLOW DRYWALL SURFACE** - Locate best mounting location in ceiling or wall. Using the Speaker Wall Plate (A) as a template mark hole position on mounting surface (see fig. 1) **NOTE: In wall mounting applications position mounting holes in a vertical pattern.** (see fig.) Drill holes in the drywall using a 5/16" drill bit. Once holes are drilled insert the #14 TOGGLER® ALLIGATOR anchors (N) into the holes making sure anchor is flush with wall or ceiling surface (see fig. 2) With TOGGLER® ALLIGATOR anchors in place, mount the wall plates using the #14 x 2" self tapping screws (K) (see fig. 3).



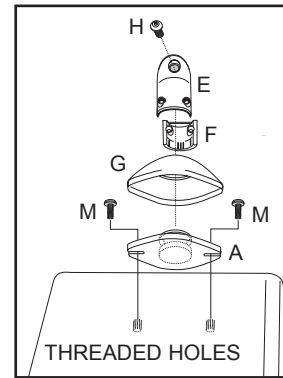
**SPEAKER WIRE ROUTING** The design of this product allows for the concealing of the speaker wire through the center of the extension tube. Route the speaker wire through the access hole in the coupler link (B) feed the wire through the center of the extension tube (C) until it exits out the opposite end. Slip wire through the center hole on the Wall plate cover (D) and into the other link set. Speaker wire should exit through gap between the link (E) and link cap (F). See drawing to the left for reference. Make sure when tightening the link assemblies the speaker wire is not pinched or crushed.



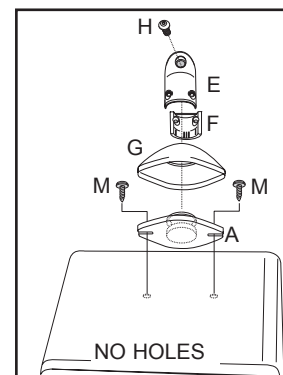
**ATTACHMENT OF COUPLER LINK AND EXTENSION**  
Engage one half of the coupler link (B) to the extension tube (C), position assembly onto the wall/ceiling plate (A). Move the remaining coupler link half (B) into place. Assemble using (4) 1/4"-20 x 1" socket head cap screws (J). Tighten screws using the provided 3/16" allen wrench. Make sure coupler link (B) is fully seated onto both the wall / ceiling plate (A) and extension tube (C). This is a good time to feed the speaker wire through assembly. Install the plastic wall / ceiling plate cover (D) over extension tube assembly.



**ASSEMBLY OF LINK TO EXTENSION TUBE**  
Install either of the links (E) onto the end of the extension tube (C). Secure link cap (F) to the link (E) by using the 1/4"-20 x 1" link cap screws (J). Tighten the screws using the provided 3/16" allen wrench. Make sure the link assembly is fully seated on extension tube (C).



**INSTALLING SPEAKER PLATE 1/4"-20 THREADED HOLES**  
Hardware has been provided for speaker cabinets with factory installed 1/4"-20 threaded inserts. Verify the thread size in your speaker cabinets prior to installation. Using the 1/4"-20 x 3/4" phillips machine screws (M) install the speaker plate (A) to the speaker cabinet. Once speaker plate (A) is installed, install the link (E) and link cap (F) assembly onto the speaker plate (A). Secure using the 1/4"-20 x 1" socket head cap screws. Tighten using the provided 3/16" allen wrench (O).



**INSTALLING SPEAKER PLATE WOOD CABINETS**  
Locate the optimum mounting position for the speaker plate (A). Using the the speaker plate (A) as a template, mark mounting hole location. **CAUTION: Do not drill into speaker where you could possibly damage any internal components.** Drill holes using a 1/8" drill bit. Holes should be drilled no more than 3/4" in depth. (You can accomplish this by placing a piece of tape 3/4" from the end of the drill bit, this will provide you with a guide) Using the #14 x 1" self tapping screws (L) mount the speaker plate (A) to the speaker cabinet. Once speaker plate (A) is installed, install the link (E) and link cap (F) assembly onto the speaker plate (A). Secure using the 1/4"-20 x 1" socket head cap screws. Tighten using the provided 3/16" allen wrench (O).