



# FortiCam FD55-CA

## QuickStart Guide



December 6, 2023

## 1<sup>st</sup> Edition

Copyright © 2023 Fortinet, Inc. All rights reserved. Fortinet®, FortiGate®, FortiCare® and FortiGuard®, and certain other marks are registered trademarks of Fortinet, Inc., and other Fortinet names herein may also be registered and/or common law trademarks of Fortinet. All other product or company names may be trademarks of their respective owners. Performance and other metrics contained herein were attained in internal lab tests under ideal conditions, and actual performance and other results may vary. Network variables, different network environments and other conditions may affect performance results. Nothing herein represents any binding commitment by Fortinet, and Fortinet disclaims all warranties, whether express or implied, except to the extent Fortinet enters a binding written contract, signed by Fortinet's General Counsel, with a purchaser that expressly warrants that the identified product will perform according to certain expressly-identified performance metrics and, in such event, only the specific performance metrics expressly identified in such binding written contract shall be binding on Fortinet. For absolute clarity, any such warranty will be limited to performance in the same ideal conditions as in Fortinet's internal lab tests. Fortinet disclaims in full any covenants, representations, and guarantees pursuant hereto, whether express or implied. Fortinet reserves the right to change, modify, transfer, or otherwise revise this publication without notice, and the most current version of the publication shall be applicable.

Technical Documentation

<https://docs.fortinet.com>

Knowledge Base

<https://kb.fortinet.com>

Forums

<https://forum.fortinet.com>

Customer Service & Support

<https://support.fortinet.com>

Training Services

<https://training.fortinet.com>

FortiGuard Threat Research & Response

<https://www.fortiguard.com>

Document Feedback

[techdocs@fortinet.com](mailto:techdocs@fortinet.com)

Product License Agreement/EULA &  
Warranty Terms

<https://www.fortinet.com/content/dam/fortinet/assets/legal/EULA.pdf>

# Table of Contents

Package Contents	1
Hardware Installation	2
Status LEDs	13
Buttons	14
Camera Connection	15
Technical Specifications	18
Register for Support and Cloud Access	20
Cautions and Warnings	21
Regulatory Notices	22

# Package Contents

- FortiCam camera
- 4 Mounting screws
- 4 Wall anchors
- Star (T10 Torx) key wrench
- Multi-wire grommet
- EMT adapter
- Replacement dry pack (silica gel desiccant)
- Drill template (alignment) sticker



# Hardware Installation

There are multiple ways to install the camera. These instructions show mounting on a wall or ceiling. For alternatives, see the [Mounting Guide](#).

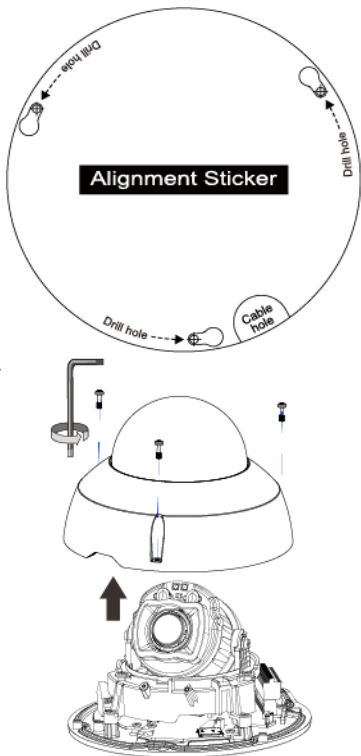
**Caution:** Only remove the protective wrap from the lens once installation is complete to avoid damage and scratches.

Provide adequate grounding to the camera and the PoE injector, in compliance with your local electrical code or regulations. The grounding wire color must be a green-and-yellow combination and the conductor size must be a minimum of 18 AWG. If the camera is powered by a power adapter, the power adapter should be properly grounded.

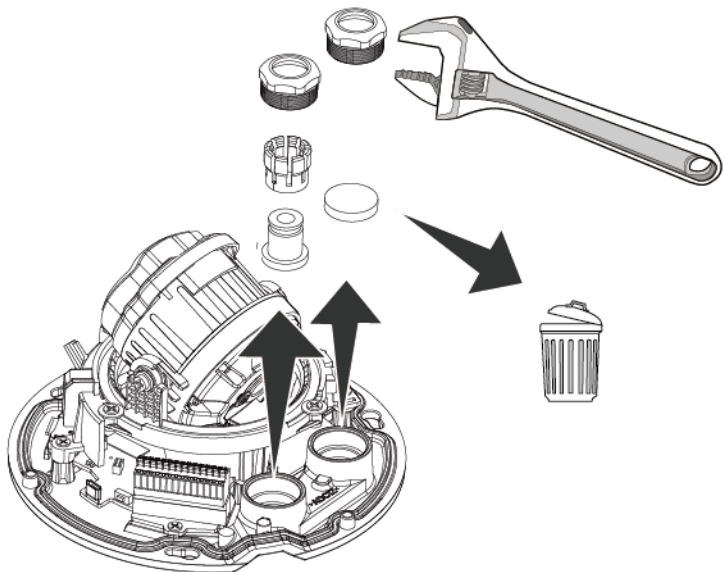
Hire qualified technicians to carry out maintenance and repairs. Disconnect power from the unit when performing maintenance.

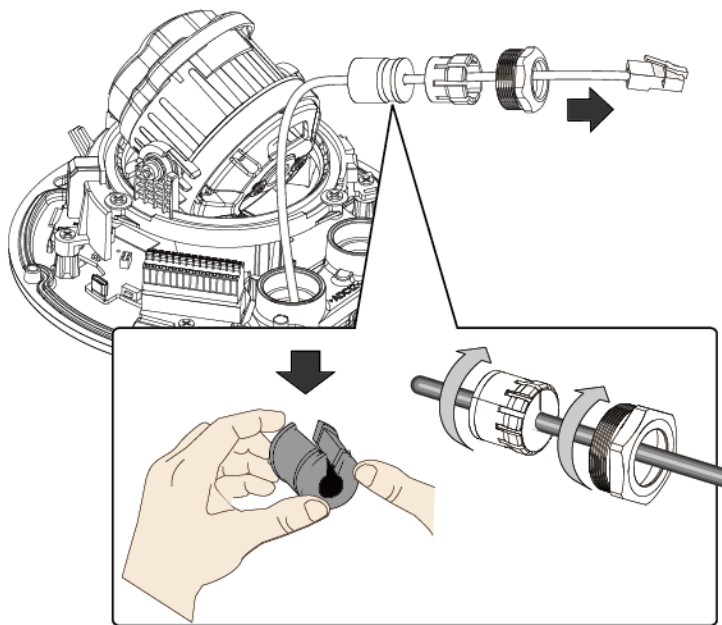
## To install the camera

1. Before installing cameras, carefully design your system. Verify coverage of each camera. Decide whether to run cables **through** the wall/ceiling (drilling required) or **along** it, through the notch on the base. Choose a location that is not easily accessible, away from impacts and heavy vibrations. Avoid exposure to direct sunlight in outdoor locations for better image quality and longer service life.
2. Put the drill template sticker on the wall/ceiling. Drill the mounting holes.
3. Loosen the T10 anti-tamper screws and dome cover. Remove the black foam ring around the lens. (It provides padding during shipment.) Do not touch the electronics.

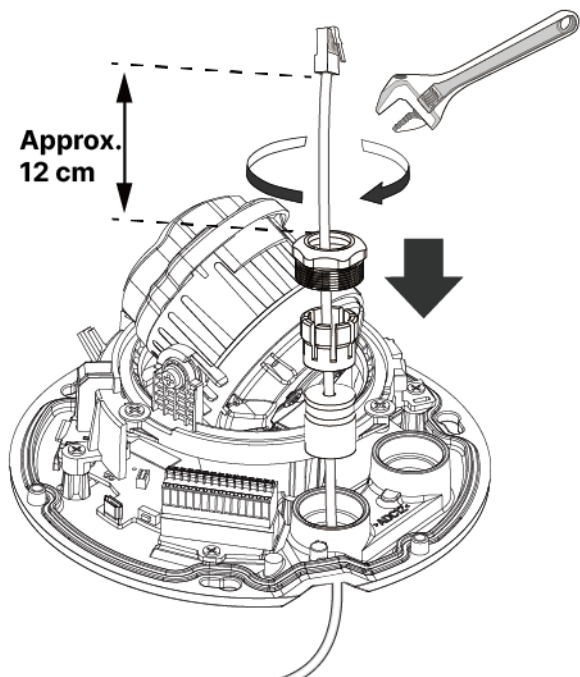


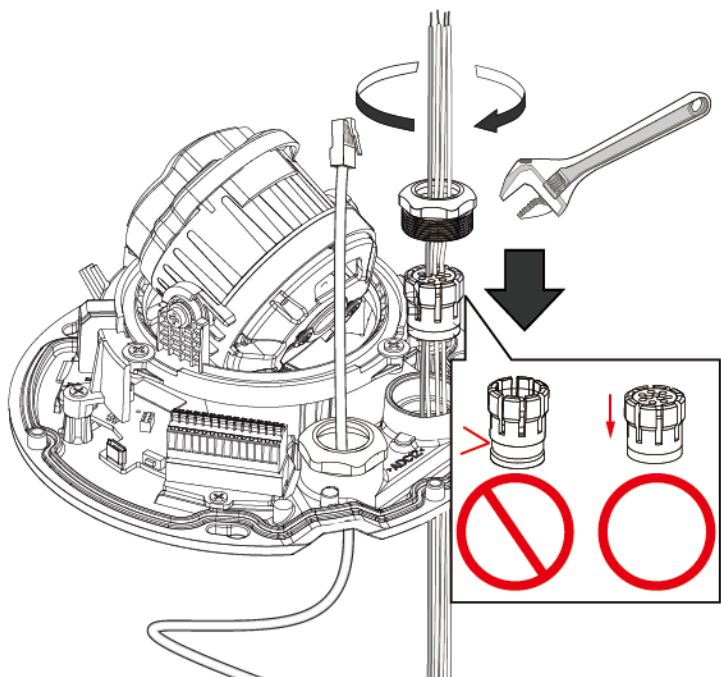
4. Loosen the grommets. Pull 12 cm of the network cable through a grommet hole. Pull the terminal wires through the other hole. Attach the grommet fittings. Tighten the grommets.



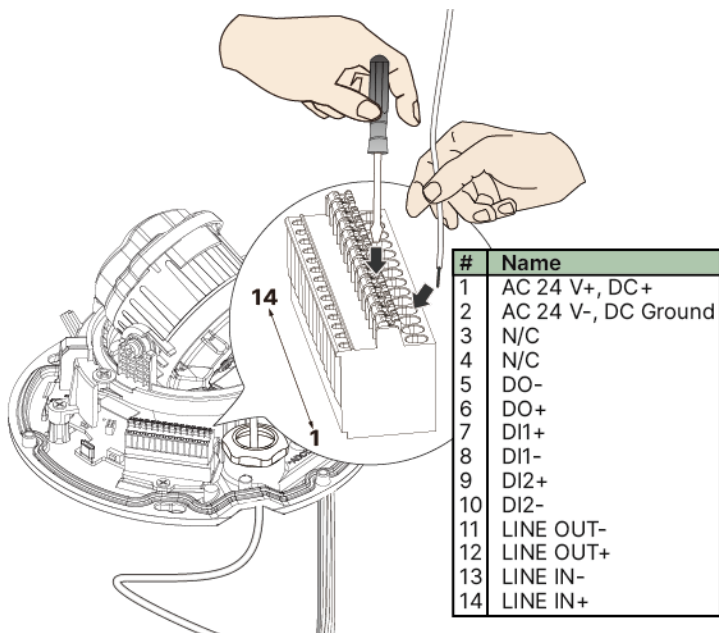




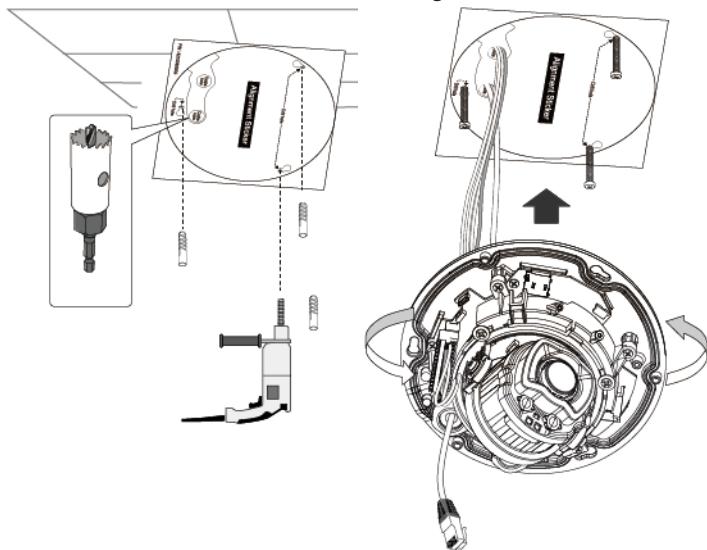




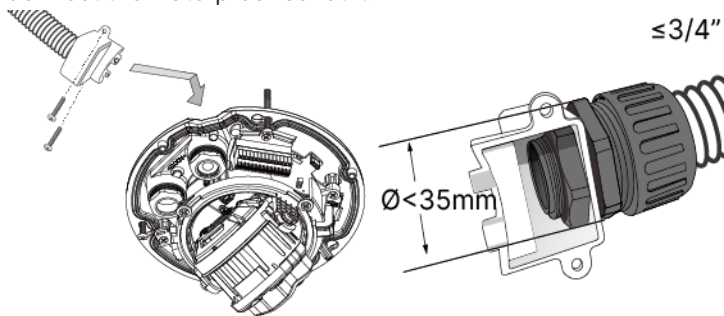
5. Connect the terminal wires.



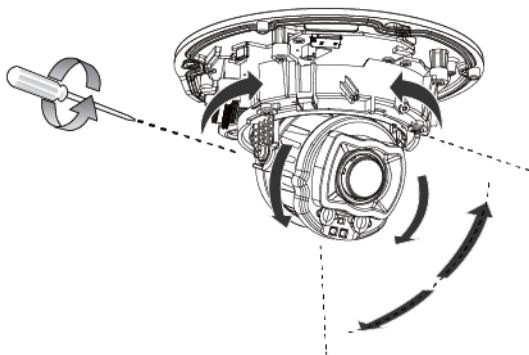
6. Mount the camera to the wall or ceiling.



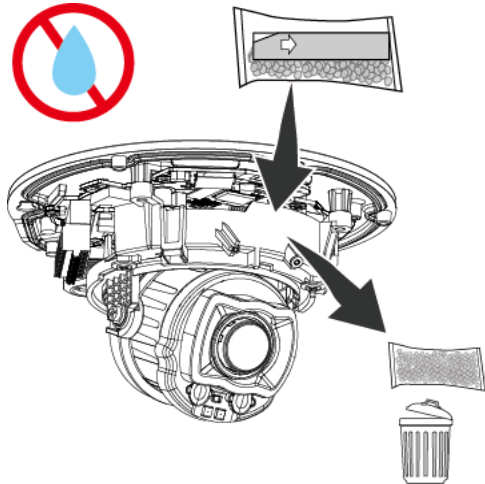
7. Connect the waterproof conduit.



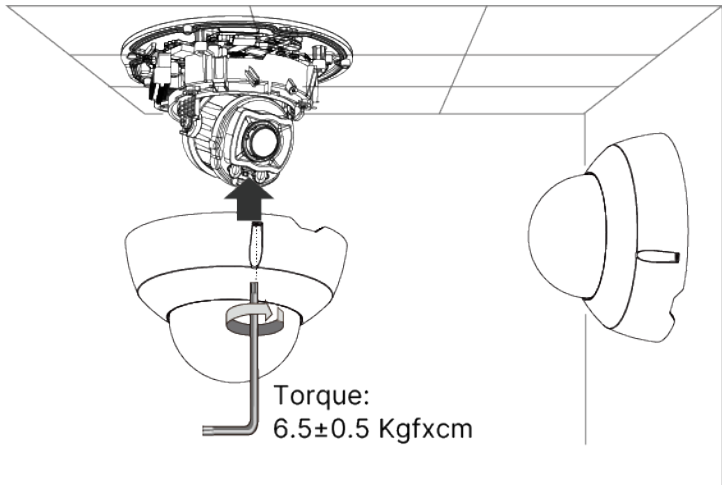
8. Adjust the pan and tilt using the 3-axis joint.



9. Replace the desiccant inside of the dome cover. Verify that there is no moisture trapped inside of the dome cover.



- 10.** Gently wipe the inside of the dome cover with a clean, lint-free cloth to remove all dust and particles. Install the dome cover. Remove protective wrap from the dome cover.



# Status LEDs

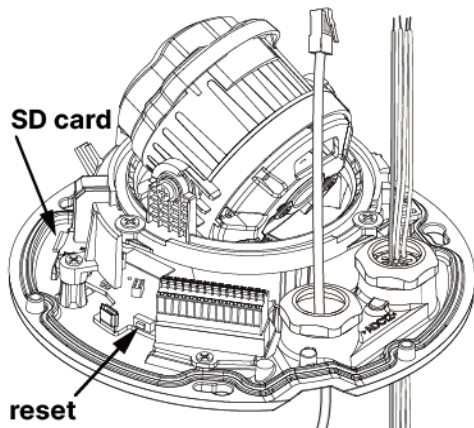
**Note:** Status LEDs can be disabled through software.

Operation		
Color	Solid	Flashing
Green	Connected via Ethernet	Firmware updating (green/red)
Amber	Warning	Cloud warning (amber/red) <b>Note:</b> Can indicate the camera is not registered and claimed in FortiCloud.
Red	Fatal error	

Bootup Sequence	
Red	Hardware initialization
Green	Network OK
Red	Searching for cloud (flashing) <b>Note:</b> If permanently flashing, can indicate no Internet access.



# Buttons



Reset Button Operation		
Press Time	LED	Action
< 5 seconds	No change in color	Reboot
> 10 seconds	Amber flashing	Factory reset <b>Note:</b> The default IP address of the camera is 192.168.1.245.

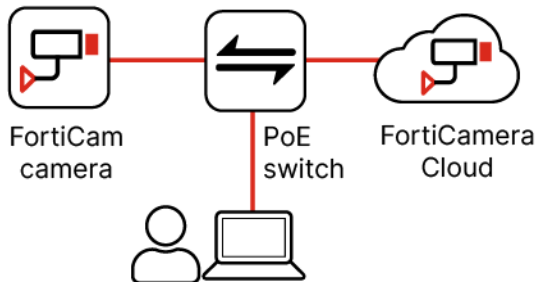
# Camera Connection

**Caution:** This device complies with IEEE 802.3at PoE specification. Do not use any PoE injectors that are not IEEE 802.3at compliant as they may damage your device.

**Attention:** Cet appareil est conforme à la spécification PoE IEEE 802.3at. N'utilisez pas d'injecteurs PoE non conformes à la norme IEEE 802.3at car ils pourraient endommager votre appareil.

**Caution:** The power cord of the PoE adapter or PoE switch should be connected to a socket outlet with a grounded connection.

**Attention:** Le cordon d'alimentation de l'adaptateur PoE ou du commutateur PoE doit être connecté à une prise de courant avec une connexion à la terre.



## To use FortiCamera Cloud to connect the camera

To connect with FortiRecorder instead, see “To use FortiRecorder to connect the camera” on page 17.

1. Connect the Ethernet port of the camera to a PoE switch or PoE injector.

The camera automatically gets its IP address from the DHCP server. Else the default IP address of the camera is 192.168.1.245.

2. Register the camera using the instructions and cloud key that are on a label attached to the camera, shown below.

Connect with FortiCloud

1. Register camera at <https://support.fortinet.com> using this FortiCloud key.
2. Connect camera to the network. Make sure it has Internet Access.
3. Sign on to <https://forticameracloud.com>

You can now claim and deploy the camera.



PLACE KEY STICKER HERE

Secure your product by removing this sticker

3. Remove the label from the camera. Keep it together with the serial number and MAC address for later identification.
4. Once the camera connects to the cloud and is claimed, its firmware will be updated automatically. This may take several

minutes and multiple reboots. **Do not power off the camera during this process.**

For connection troubleshooting, see [FortiCamera Cloud Portal Guide](#).

### **To use FortiRecorder to connect the camera**

1. Connect the Ethernet port of the camera to the FortiRecorder NVR via a PoE switch.  
The camera automatically gets its IP address from the DHCP server. Else the default IP address of the camera is 192.168.1.245.
2. Use the FortiRecorder GUI to configure the discovered camera.  
For details or connection troubleshooting, see the [FortiRecorder Administration Guide](#).

# Technical Specifications

Camera	
<b>Format</b>	Fixed dome, day/night, vandal
<b>Sensor Type</b>	5 MP, 1/2.7" low light CMOS
<b>Iris</b>	F1.6(W), F3.3(T), P-iris
<b>Focal Length</b>	2.7-13.5 mm (motorized, auto-focus)
<b>View Angle</b>	H:28-96°, V:21-70°, D:35-127°
<b>Minimum Illumination</b>	0.06 Lux (color) @ F1.6 0.005 Lux (B/W) @ F1.6
<b>WDR</b>	HDR (>90 dB)
<b>Network Interface</b>	RJ-45 Ethernet 10/100 Mbps
<b>IRLED/IRC</b>	50+m/yes
<b>3DNR</b>	Yes
<b>Streaming Protocol</b>	RTSP
<b>SD Card</b>	512 GB SD card (Included)
<b>Video Compression</b>	H.264/H.265 (HEVC)
<b>Audio</b>	Two-way, line in/out

<b>Camera</b>	
<b>Image Resolution</b>	5 MP, 1080p, or 720p at 30 fps
<b>Mounting</b>	Wall, ceiling, 3-axis, 3/4" conduit
<b>Dimensions</b>	
<b>Height x Width x Length</b>	4.05 × 6.1 × 6.1"(103 × 155 × 155 mm)
<b>Weight</b>	2.17 lb. (986 g)
<b>Environment</b>	
<b>Power Required</b>	PoE (802.3at)
<b>Power Consumption (AVG)</b>	<22.5 W
<b>Operating Temperature</b>	-40–122°F (-40–50°C) working IR on -22–144°F (-30–60°C) working IR off -22–144°F (-30–60°C) starting
<b>Humidity</b>	<90% non-condensing
<b>Compliance</b>	
FCC Class A, ICES-003, CE, CB, RCM, IP66, IP67, IK10	

# Register for Support and Cloud Access

Register your Fortinet product to receive:

- Technical support
- New product features
- Protection from new threats

Vous devez enregistrer le produit pour recevoir:

- Support technique
- Nouvelles fonctionnalités du produit
- Protection contre de nouvelles menaces

La reistrazione ti permette di usufruire di:

- Supporto tecnico
- Nuove funzionalita
- Protezione dalle ultime minacce

Debe registrar el producto para recibir:

- Apoyo técnico
- Nuevas funcionalidades del producto
- Protección contra ataques

下記フォーティネットからのサービスを受けるために、ご購入製品の登録が必要です:

- テクニカルサポート
- 新機能の追加
- 新しい脅威への防御

注册您的飞塔产品后可以得到:

- 技术支持
- 新产品特点信息
- 最新威胁防护

Web: <https://support.fortinet.com/>

Cloud: <https://forticameracloud.com/>

Toll free: 1 866 648 4638

Phone: 1 408 486 7899

Fax: 1 408 235 7737

Email: [register@fortinet.com](mailto:register@fortinet.com)

# Cautions and Warnings

## Environmental Specifications

Ambient operating temperature: -40°C to 50°C

Refer to specific Product Model Data Sheet for Environmental Specifications (Operating Temperature, Storage Temperature, Humidity, and Altitude)

Référez à la Fiche Technique de ce produit pour les caractéristiques environnementales (Température de fonctionnement, température de stockage, humidité et l'altitude).

## Safety

**Caution:** This equipment is to be used in a Network Environment 0 per IECTR 62101. This product is connected only to PoE networks without routing to the outside plant.

**Attention:** Ce matériel doit être utilisé dans un Environnement Réseau 0 par IECTR 62101. Ce produit est uniquement connecté aux réseaux PoE sans installation externe de routage.

This product is intended to be supplied by a Listed Direct Plug-In Power Unit marked LPS or Class 2 and rated 12 Vdc, 1.92 A, by 42.5-57 Vdc from PoE source, or by AC 24 V, 1.4 A.

Le produit doit être alimenté par un bloc d'alimentation à courant continu homologué UL marqué LPS ou Classe 2 de 12 Vdc, 1.92 A, par une source d'alimentation électrique par Ethernet (PoE) de 42.5-57 Vdc, ou par AC 24 V, 1.4 A.

The connecting cable between the outdoor equipment and the indoor ITE devices should comply with Class 3 wiring methods as listed in NEC, Table 725.154(G) for Class 3 Cable Substitutions.

Le câble connectant l'équipement extérieur et ceux d'intérieur de type ITE doit être conforme avec les méthodes de câblage de classe 3 tel que listé dans le standard NEC, Table 725.154(G) pour les câbles de substitutions de classe 3.

PoE input cable type should be CL3, CL3P, CL3R, CL3X, marked "SUNLIGHT RESISTANT", "SUN. RES.", or "SR." and "water resistant" or "W".

Le type de câble PoE d'entrée doit être CL3, CL3P, CL3R, CL3X marqué "SUNLIGHT RESISTANT": "SUN RES.» Ou «SR». et "waterproof" ou "W".



# Regulatory Notices

## **Federal Communication Commission (FCC) – USA**

This device complies with Part 15 of FCC Rules. Operation is subject to the following two conditions:

- (1) this device may not cause harmful interference, and
  - (2) this device must accept any interference received; including interference that may cause undesired operation.
- This equipment has been tested and found to comply with the limits for a Class A digital device, pursuant to Part 15 of the FCC Rules. These limits are designed to provide reasonable protection against harmful interference when the equipment is operated in a commercial environment. This equipment generates, uses, and can radiate radio frequency energy, and if it is not installed and used in accordance with the instruction manual, it may cause harmful interference to radio communications. Operation of this equipment in a residential area is likely to cause harmful interference, in which case the user will be required to correct the interference at his own expense.

**WARNING:** Any changes or modifications to this unit not expressly approved by the party responsible for compliance could void the user's authority to operate the equipment.

## **Industry Canada Equipment Standard for Digital Equipment (ICES) – Canada**

CAN ICES-003 (A) / NMB-003 (A)

This digital apparatus does not exceed the Class A limits for radio noise emissions from digital apparatus set out in the Radio Interference Regulations of the Canadian Department of Communications.

Cet appareil numérique n'émet pas de bruits radioélectriques dépassant les limites applicables aux appareils numériques de la classe A prescrites dans le Règlement sur le brouillage radioélectrique édicté par le ministère des Communications du Canada.

## **European Conformity (CE) - EU**

This is a Class A product. In a domestic environment, this product may cause radio interference, in which case the user may be required to take adequate measures.







