

GAMING UTILITY

User Manual

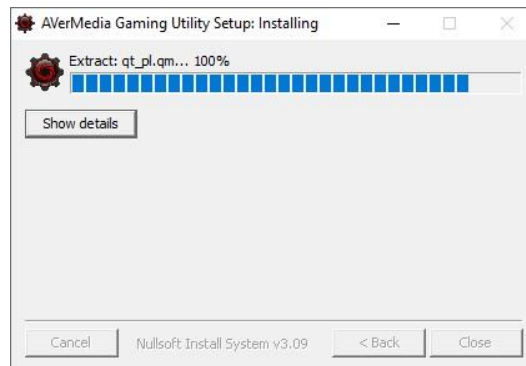
Overview	2
Installation	2
Device Information	3
Device Audio Settings	3
HDCP*	4
RGB Control	5
Light Control	5
Light Effects	5
Settings	6
Troubleshooting	7
Compatibility	7
Help and Suggestions	8

Overview

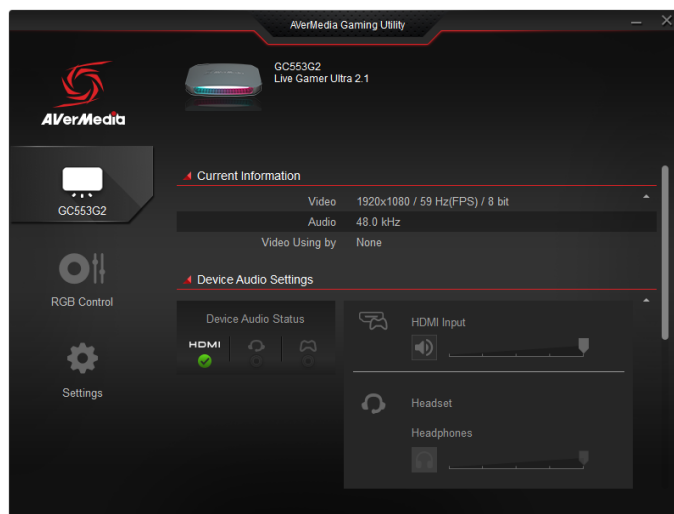
AVerMedia Gaming Utility is a handy tool that helps users obtain their capture card's information, adjust its audio settings, customize the RGB lighting, and more.

Installation

Visit your capture card's webpage and download Gaming Utility. Install it by following the step-by-step instructions.



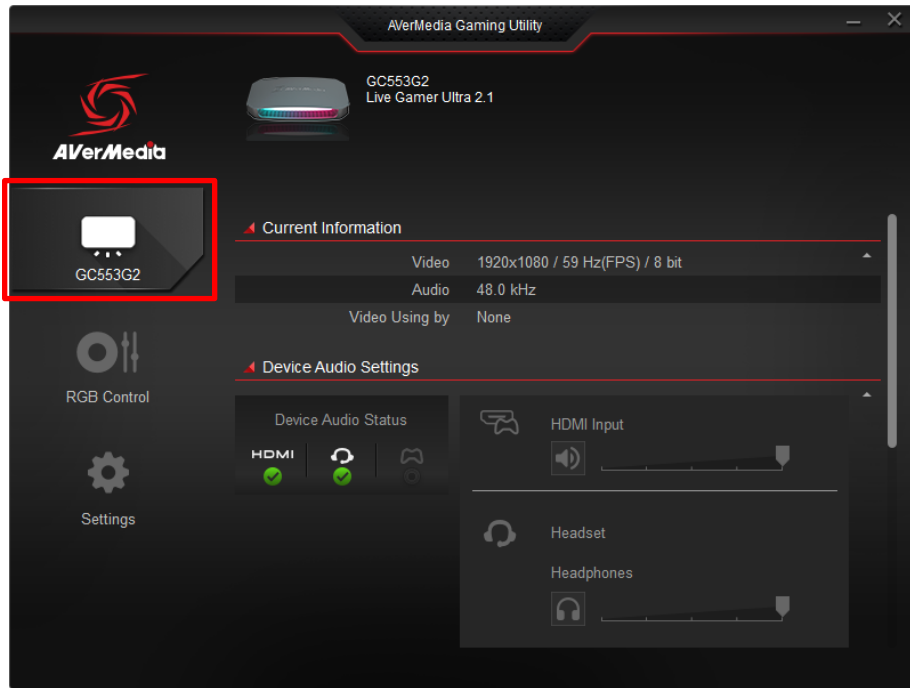
Once installed, you'll be greeted with an interface shown below.



Note: Gaming Utility currently supports capture cards GC575, GC573, GC571, GC570D, GC555, GC553G2, and GC553. The support list may be updated without prior notice.

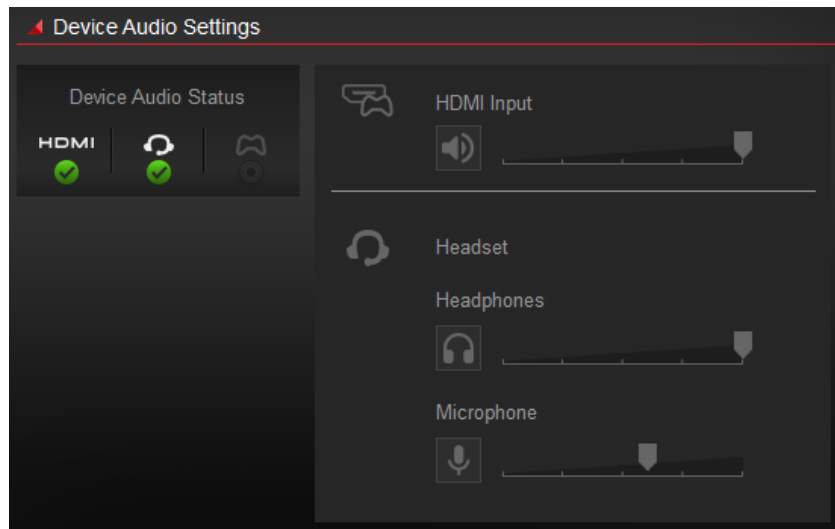
Device Information

Located near the upper left of the UI, this function provides information about your capture card, including audio and HDCP settings as you scroll down.

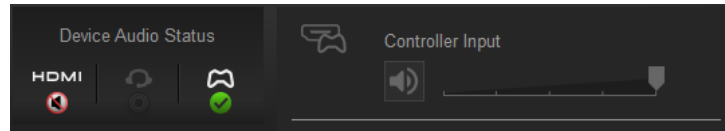


Device Audio Settings

For example, with GC553G2, you can adjust not only HDMI audio input but also headphones and microphone volumes.

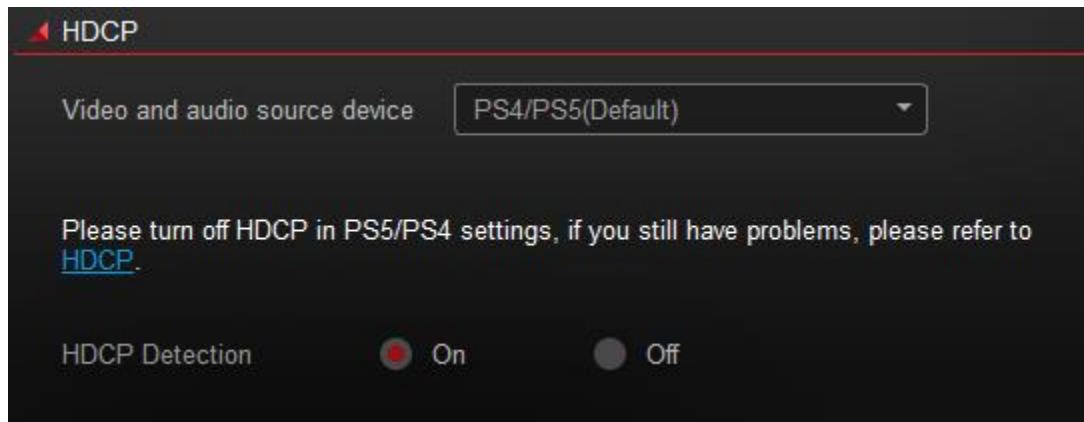


Note: When connecting an audio cable from your controller to GC553G2, audio capture will automatically switch from HDMI to the controller, with Controller Input volume control available as shown below.



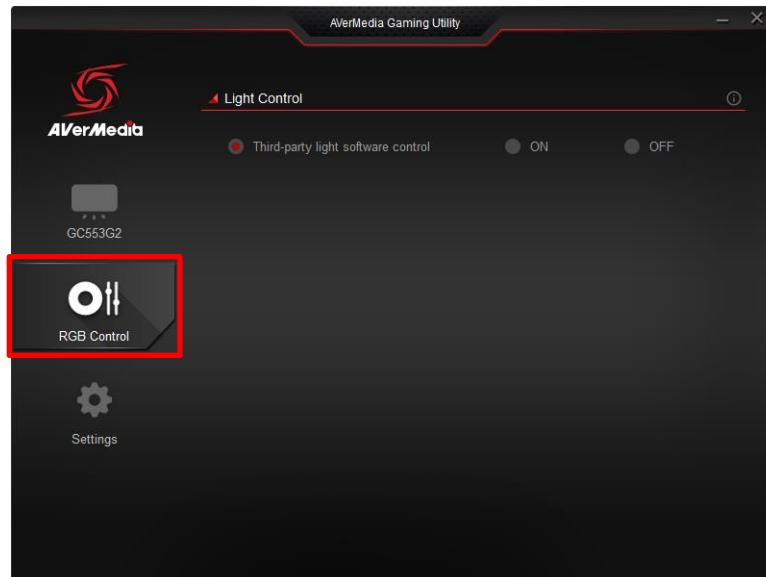
HDCP*

Select the proper video and audio source and follow the recommended setting for your source type.



* HDCP detection is a security verification process that occurs while connecting two digital devices (e.g. a player and a monitor) to ensure that transmitted content is protected from unauthorized copying.

RGB Control



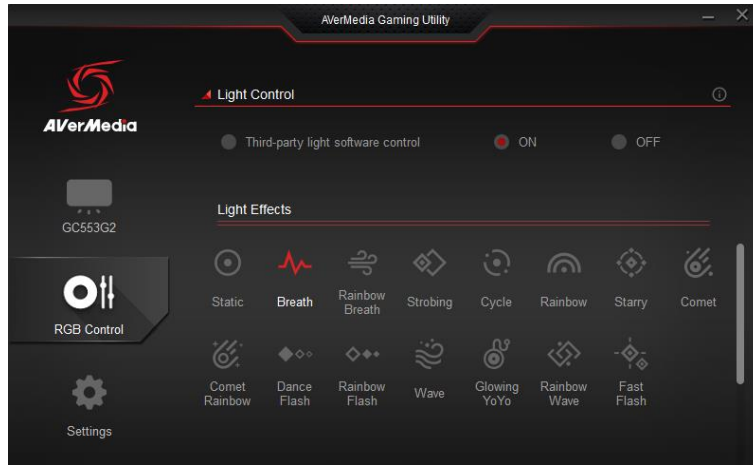
Light Control

Under the **Light Control** setting, you have the option to turn On, Off, or enable **Third-party light software control** (default setting). This allows other light control programs, such as those from ASRock, MSI, and others, to manage the capture card's lighting to sync with theirs.

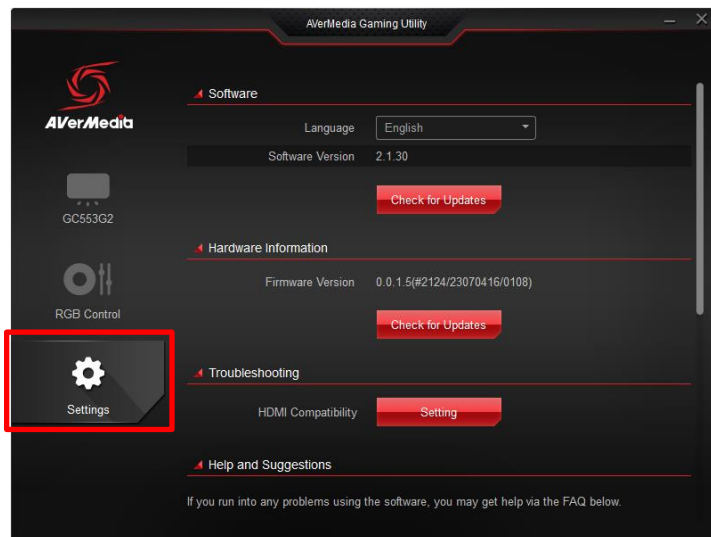
Note: To avoid software conflicts, it is recommended to disable all lighting control from other software if you choose to turn it on in Gaming Utility.

Light Effects

When the **Light Control** setting is turned on, you get to choose from a collection of lighting effects. Depending on the one you choose, some can be customized to their color, speed, and brightness.



Settings

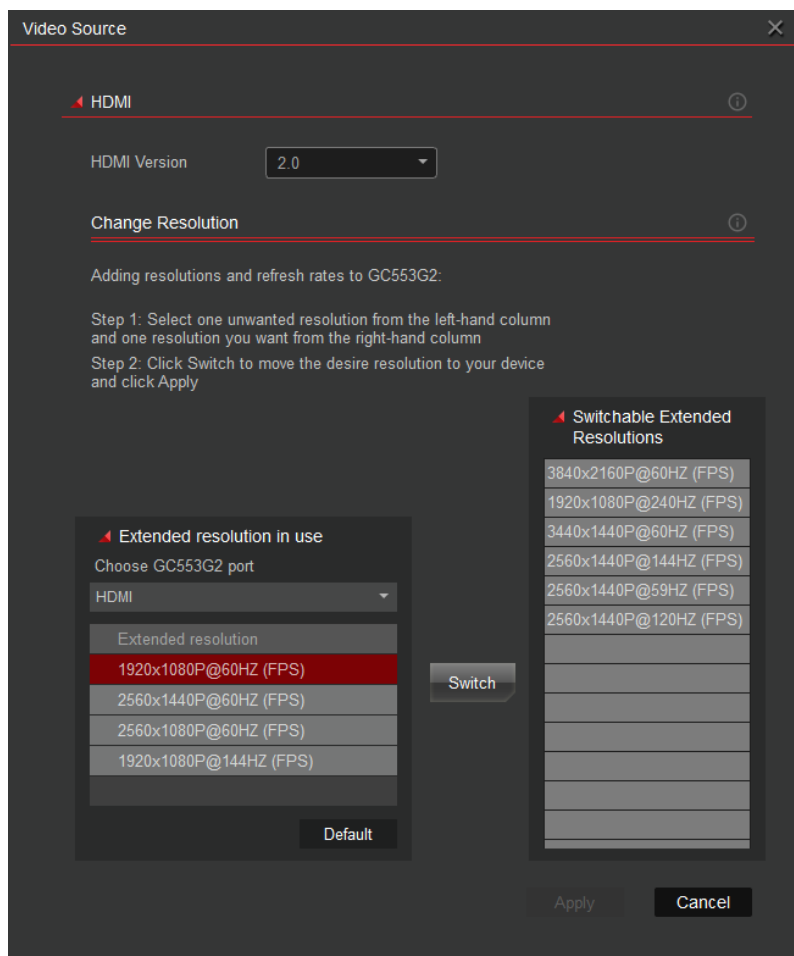


The Settings include essential functions such as software and hardware updates, troubleshooting, and more.

Troubleshooting

Compatibility

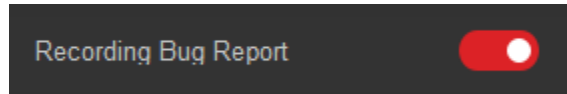
If your monitor is having trouble displaying videos, you may try different HDMI versions for better compatibility. Take HDMI 2.0 for instance, if you select it at the top, a list of respective resolutions and refresh rates will be available. Simply follow the steps to swap the resolutions you want to the left for your capture card to use.



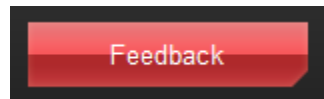
Help and Suggestions

This setting has a feedback function that can record the system log when the problem happens.

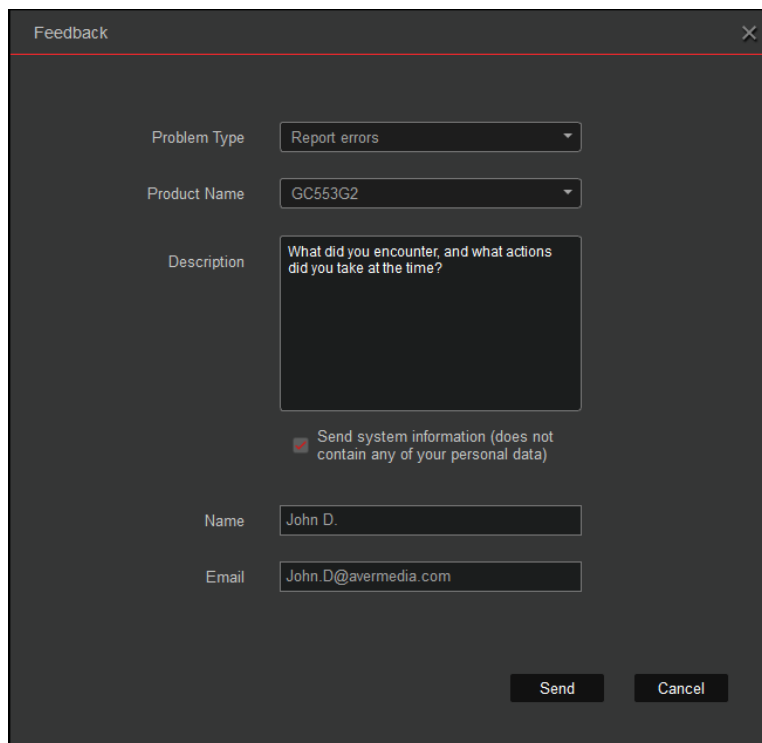
First, you need to enable Recording Bug Report.



Reproduce the problem for the software to record it. After the problem reoccurs, click Feedback.



Fill in the form, and submit the bug report.

A dark grey feedback form window titled "Feedback" with a close button in the top right corner. It contains the following fields:

- Problem Type: A dropdown menu with "Report errors" selected.
- Product Name: A dropdown menu with "GC553G2" selected.
- Description: A text area with the placeholder text "What did you encounter, and what actions did you take at the time?".
- Send system information: A checkbox that is checked, with the text "Send system information (does not contain any of your personal data)".
- Name: A text input field containing "John D.".
- Email: A text input field containing "John.D@avermmedia.com".

At the bottom right, there are two buttons: "Send" and "Cancel".

AVerMedia