



**macOS**

**Scanner Driver & Utilities**

**User's Guide**

# Contents

<b>Introduction</b> .....	2
<b>How to Use the Manual</b> .....	3
Notations Used in the Manual .....	4
<b>Disclaimers</b> .....	5
<b>Copyright</b> .....	6
<b>Trademarks</b> .....	7
<b>Before Use</b> .....	9
<b>Installing the Driver</b> .....	11
<b>Flow of Preparations for Scanning</b> .....	12
<b>Pre-installation Check</b> .....	13
System Requirements .....	14
About the Readme File .....	15
<b>Installing the Driver</b> .....	16
<b>Registering a Scanner</b> .....	17
Registering an MF Scan Utility Compatible Scanner .....	18
Registering an MF Toolbox Compatible Scanner .....	21
<b>Uninstalling a Driver</b> .....	24
<b>Scanning Using the Driver</b> .....	26
<b>Scanning from the MF Scan Utility</b> .....	27
<b>Scanning from the MF Toolbox</b> .....	28
<b>Scanning from an Application</b> .....	31
<b>About Guidelines for Resolution Settings</b> .....	32
<b>Settings List</b> .....	34
<b>MF Scan Utility Settings</b> .....	35
<b>MF Toolbox Settings</b> .....	42
<b>ScanGear MF Settings</b> .....	47
<b>Troubleshooting</b> .....	52
<b>Cannot Scan</b> .....	53
<b>The Scanned Image is Dirty</b> .....	54

# Introduction

<b>Introduction</b> .....	2
<b>How to Use the Manual</b> .....	3
Notations Used in the Manual .....	4
<b>Disclaimers</b> .....	5
<b>Copyright</b> .....	6
<b>Trademarks</b> .....	7

# Introduction

---

- ▶ **How to Use the Manual(P. 3)**
- ▶ **Disclaimers(P. 5)**
- ▶ **Copyright(P. 6)**
- ▶ **Trademarks(P. 7)**

## How to Use the Manual

---

This explains things that you need to know in order to use this manual.

▶ **Notations Used in the Manual(P. 4)**

# Notations Used in the Manual

---

This explains symbols and settings used in this manual.

## Symbols Used in This Manual

In this manual, explanations of items and operations that must be followed while using the driver are set forth the symbols that indicate the following.



### IMPORTANT

- Indicates operational requirements and restrictions. Be sure to read these items carefully to operate the product correctly, and avoid damage to the product.



### NOTE

- Indicates a clarification of an operation, or contains additional explanations for a procedure. Reading these notes is highly recommended.

## About Settings

In this manual, setting names displayed on the computer screen are represented as shown in the following examples.

Example:

[Settings]

[OK]

## Disclaimers

---

The information in this document is subject to change without notice.

CANON INC. MAKES NO WARRANTY OF ANY KIND WITH REGARD TO THIS MATERIAL, EITHER EXPRESS OR IMPLIED, EXCEPT AS PROVIDED HEREIN, INCLUDING WITHOUT LIMITATION, THEREOF, WARRANTIES AS TO MARKETABILITY, MERCHANTABILITY, FITNESS FOR A PARTICULAR PURPOSE OF USE OR NON-INFRINGEMENT. CANON INC. SHALL NOT BE LIABLE FOR ANY DIRECT, INCIDENTAL, OR CONSEQUENTIAL DAMAGES OF ANY NATURE, OR LOSSES OR EXPENSES RESULTING FROM THE USE OF THIS MATERIAL.

## Copyright

---

Copyright CANON INC. 2023

No part of this publication may be reproduced, transmitted, transcribed, stored in a retrieval system, or translated into any language or computer language in any form or by any means, electronic, mechanical, magnetic, optical, chemical, manual, or otherwise, without the prior written permission of Canon Inc.



## Trademarks

---

Apple, macOS, and Safari are trademarks of Apple Inc.

All brand names and product names appearing on this document are registered trademarks or trademarks of their respective owners.

All other trademarks are the property of their respective owners.

# Before Use

**Before Use** ..... 9

## Before Use

---

- The newest driver versions are released on the Canon website. You can download them as necessary after checking your operating environment.  
Canon website: <https://global.canon/>
- The functions that you can use may vary according to the following conditions.
  - The device you are using and its configuration
  - The device firmware version
  - The option structure of the device
  - The driver version
  - The environment of the computer you are using
  - The application you are using
- There may be instances where the illustrations of displays and content of procedures in this manual differ from what is actually displayed.
- The descriptions in this manual use examples from macOS 13 (Ventura).

# Installing the Driver

<b>Installing the Driver</b> .....	11
<b>Flow of Preparations for Scanning</b> .....	12
<b>Pre-installation Check</b> .....	13
System Requirements .....	14
About the Readme File .....	15
<b>Installing the Driver</b> .....	16
<b>Registering a Scanner</b> .....	17
Registering an MF Scan Utility Compatible Scanner .....	18
Registering an MF Toolbox Compatible Scanner .....	21
<b>Uninstalling a Driver</b> .....	24

## Installing the Driver

---

This section explains driver installation and device preparation.

- ▶ **Flow of Preparations for Scanning(P. 12)**
- ▶ **Pre-installation Check(P. 13)**
- ▶ **Installing the Driver(P. 16)**
- ▶ **Registering a Scanner(P. 17)**
- ▶ **Uninstalling a Driver(P. 24)**

## Flow of Preparations for Scanning

---

Before using the driver and scanning, there are preparations that need to be done beforehand.

This driver is a macOS scanner driver for Canon devices. When it is installed, utility for scanning data to a computer called MF Scan Utility and MF Toolbox is also installed. The driver can connect to this utility to attach scanned images to e-mail and extract text from images.

This section describes the preparations required before scanning.

Carry out preparations and settings in the following order.

1. Obtain an installer by one of the following methods.
  - Download it from the Canon website (<https://global.canon/>)
  - Supplied CD-ROM
2. Install the driver to macOS.
3. Check the utility (MF Scan Utility or MF Toolbox) that supports the scanner you are using.
4. Register the scanner you want to use to macOS.



### NOTE

- You can check the version of the installed driver or utility from the menu bar.

## Related Topics

---

- ▶ **Installing the Driver(P. 16)**
- ▶ **Registering a Scanner(P. 17)**

## Pre-installation Check

---

This describes the items to be checked beforehand in order to install the driver correctly.

- ▶ **System Requirements(P. 14)**
- ▶ **About the Readme File(P. 15)**

## System Requirements

---

Use one of the following system environments with this driver.

### Operating Systems

macOS 10.13.6 or later

### Hardware

A computer guaranteed to operate using the above operating system.



## About the Readme File

---

The following content is contained in the Readme file.

- Limitations, restrictions, and cautions when installing or using the driver
- Utility that supports the device (MF Scan Utility or MF Toolbox)

Refer to README-ENG.html in the accompanying CD-ROM or the downloaded driver folder.

# Installing the Driver

---

This section explains the procedure for installing the driver to macOS.

Install the driver and register the scanner to use.

## Prerequisites

---

- Obtain the driver installer.
- **System Requirements(P. 14)**
- Close all running applications.
- If the computer and device are connected by USB, turn off the main power of the device.

## Procedures

---

**1** Open the driver installer folder → select [Canon\_ScanGear\_MF.pkg] or [Canon\_Driver.pkg].

**2** Read the Software License Agreement → click [Continue].

If a dialog asking you to confirm that you agree to the Software License Agreement is displayed, click [Agree].

**3** Click [Install].

If a dialog for entering a user name and/or password is displayed, enter the name and password of a computer administrator and continue according to the instructions in the dialog.

**4** Click [Close].

Install the MF Scan Utility and MF Toolbox required to register the scanner.

Register the scanner.

## Related Topics

---

- ▶ [Flow of Preparations for Scanning\(P. 12\)](#)
- ▶ [Registering an MF Scan Utility Compatible Scanner\(P. 18\)](#)
- ▶ [Registering an MF Toolbox Compatible Scanner\(P. 21\)](#)

## Registering a Scanner

---

You can register the scanner you are going to use.

The MF Scan Utility or MF Toolbox is used to register a scanner. To find out which utility corresponds to the device you are using, refer to the Readme file.

- ▶ **Registering an MF Scan Utility Compatible Scanner(P. 18)**
- ▶ **Registering an MF Toolbox Compatible Scanner(P. 21)**

## Registering an MF Scan Utility Compatible Scanner

You can register a scanner to macOS using the MF Scan Utility.

Here, the procedures for network connection and USB connection will be explained.

### Prerequisites

- **Installing the Driver(P. 16)**
- Confirmation of the specified IP address (when connected by TCP/IP)  
If you do not know the IP address, check with the network administrator.
- Confirmation of the corresponding utility  
For the utility corresponding to the device, refer to the Readme file.

### Procedures

#### When registering a scanner connected over a network

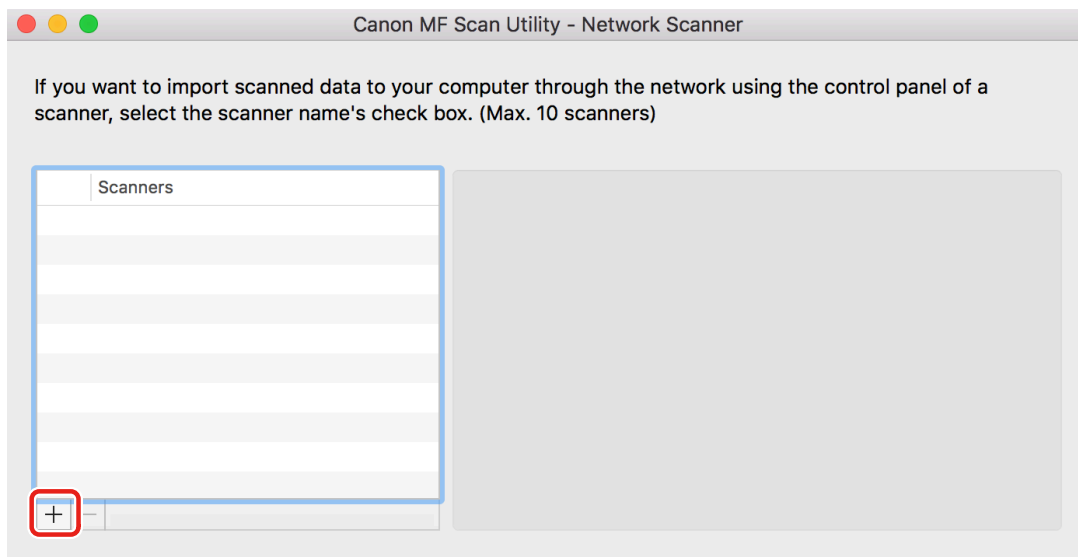
#### 1 Click "Launchpad" in "Dock" → click [Canon MF Scan Utility].

MF Scan Utility starts.

When you start MF Scan Utility for the first time or if no scanners are registered, a message indicating that no scanners are registered is displayed. Close the message and proceed to step **3.(P. 18)**.

#### 2 Select [Network Scanner Settings] > [Canon MF Scan Utility] in the menu bar.

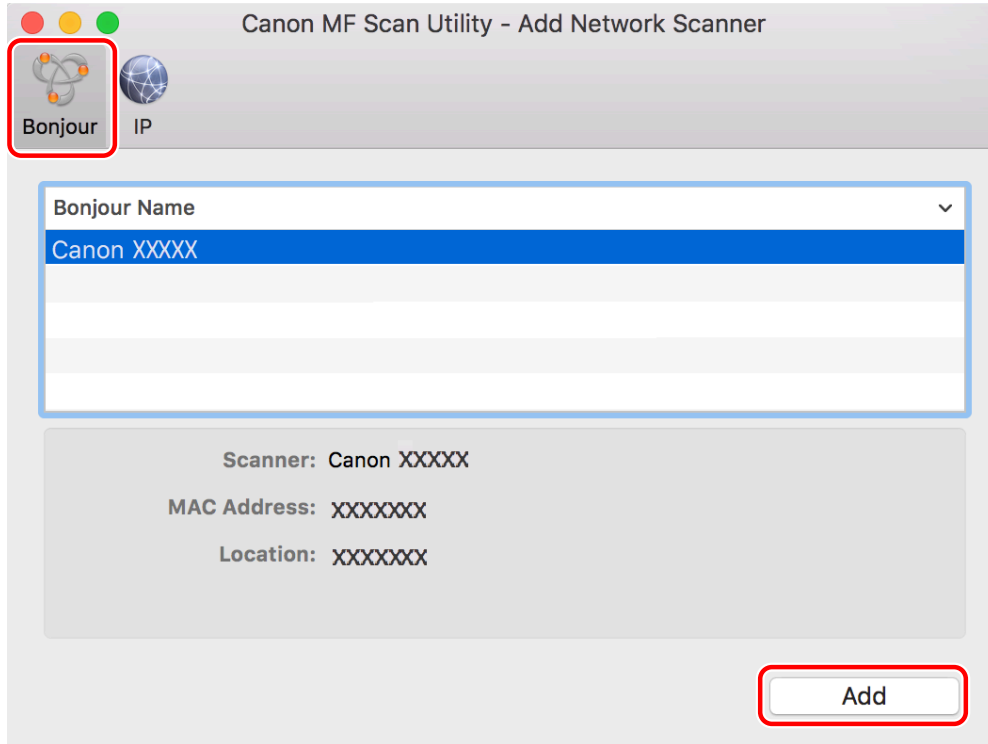
#### 3 Click [+] at the bottom of the [Canon MF Scan Utility - Network Scanner] dialog.



## 4 Register the scanner.

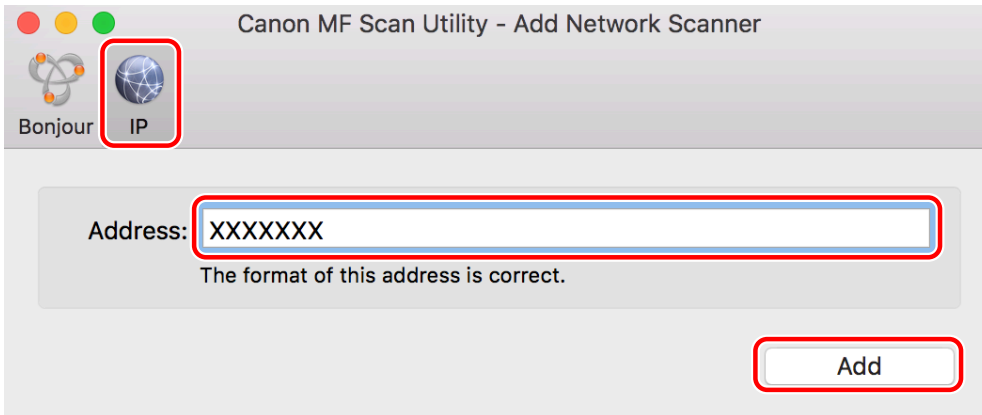
### For a Bonjour connection

Display the [Bonjour] tab → select the Bonjour name → click [Add].



### For a TCP/IP connection

Display the [IP] tab → enter the IP address of the scanner → click [Add].



## 5 Start the MF Scan Utility.

## 6 In the main dialog of [Canon MF Scan Utility], check that the registered scanner is displayed in [Scanner]/[Product Name].

If the registered scanner is not displayed, reinstall the driver.

## When registering a scanner connected by USB

### 1 Turn the scanner on → connect the scanner and the computer by USB cable.

**2** Click "Launchpad" in "Dock" → click [Canon MF Scan Utility].

MF Scan Utility starts.

**3** In the main dialog of [Canon MF Scan Utility], check that the registered scanner is displayed in [Scanner]/[Product Name].

If the scanner is not displayed, restart the MF Scan Utility after reconnecting the USB cable. If the scanner is still not displayed, reinstall the driver.

## Related Topics

---

- 🔗 [About the Readme File\(P. 15\)](#)

# Registering an MF Toolbox Compatible Scanner

You can register a scanner to macOS using the MF Toolbox.

Here, the procedures for network connection and USB connection will be explained.

## Prerequisites

- **Installing the Driver(P. 16)**
- Confirmation of the specified IP address (when connected by TCP/IP)  
If you do not know the IP address, check with the network administrator.
- Confirmation of the corresponding utility  
For the utility corresponding to the device, refer to the Readme file.

## Procedures

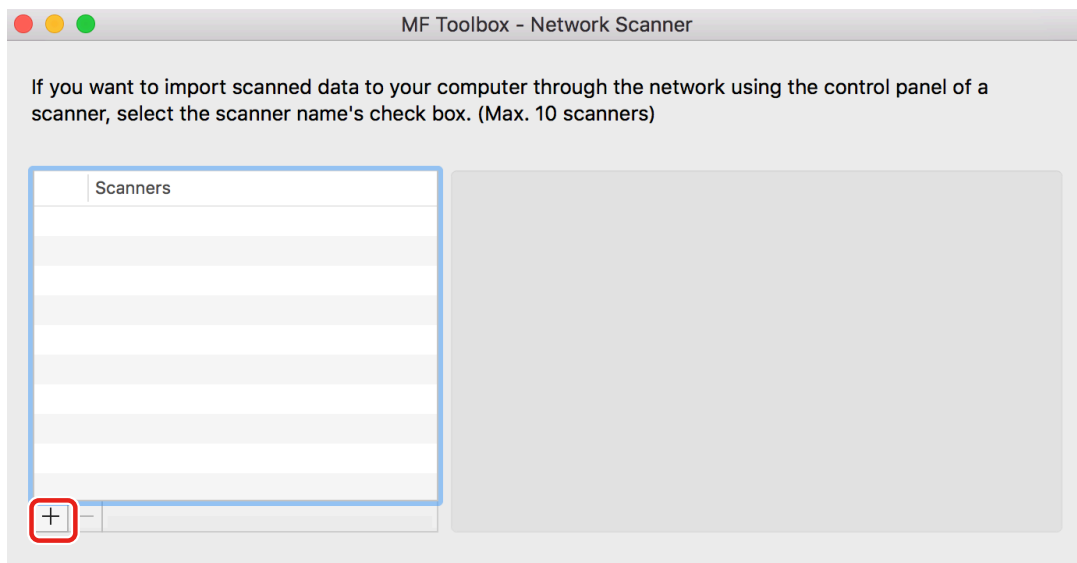
### When registering a scanner connected over a network

#### 1 Click "Launchpad" in "Dock" → click [MF Toolbox].

When you start MF Toolbox for the first time or if no scanners are registered, a message indicating that no scanners are registered is displayed. Close the message and proceed to the next step.

#### 2 Select [Network Scanner Settings] > [MF Toolbox] in the menu bar.

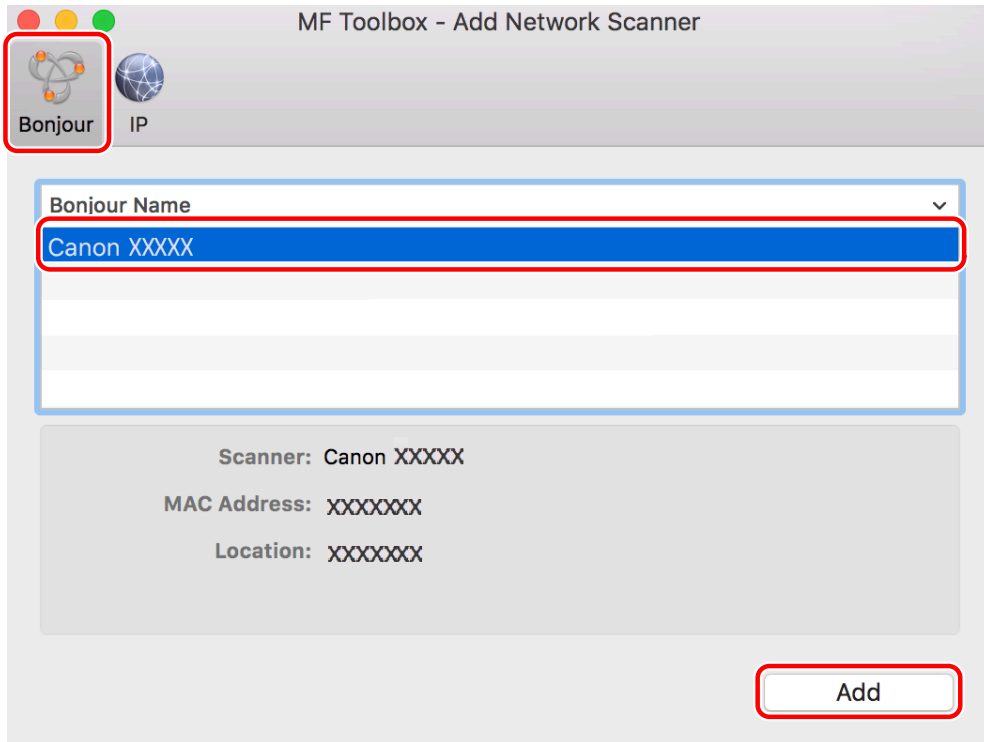
#### 3 Click [+] at the bottom of the [MF Toolbox - Network Scanner] dialog.



## 4 Register the scanner.

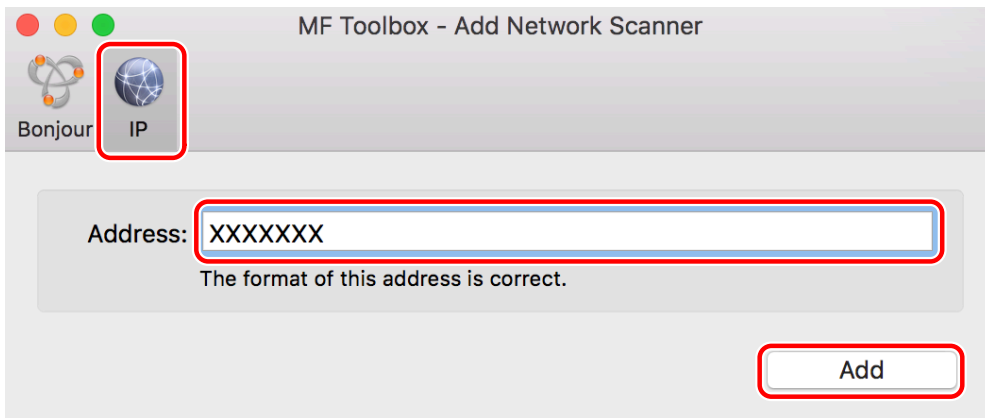
### For a Bonjour connection

Display the [Bonjour] tab → select the Bonjour name → click [Add].



### For a TCP/IP connection

Display the [IP] tab → enter the IP address of the scanner → click [Add].



## 5 Check that the registered scanner is displayed in the [MF Toolbox - Network Scanner] dialog.

If the registered scanner is not displayed, reinstall the driver.

## When registering a scanner connected by USB

- 1 Turn the scanner on → connect the scanner and the computer by USB cable.
- 2 Click "Launchpad" in "Dock" → click [MF Toolbox].



MF Toolbox starts.

**3 Select [Scanner] from the menu bar → check that the registered scanner is displayed in the displayed pop-up menu.**

If the scanner is not displayed, restart the MF Toolbox after reconnecting the USB cable. If the scanner is still not displayed, reinstall the driver.

## Related Topics

---

- ▶ [About the Readme File\(P. 15\)](#)

# Uninstalling a Driver

---

This explains the procedure for uninstalling a driver that is no longer needed.

## Prerequisites

---

- When connected by USB, removal of the USB cable connecting the device and the computer
- Confirmation of the device name to be deleted



### NOTE

- The driver can be upgraded. It is not necessary to uninstall the old driver.

## Procedures

---

### 1 Delete the files of the driver to uninstall in the [Library] folder of macOS.

If a confirmation dialog is displayed, enter an administrator name and password and click [OK].

The name represented by "\*\*\*\*" varies according to the device.

- Applications/Canon MF Utilities
- Library/Application Support/Canon/ScanGear MF
- Library/Application Support/Canon/WMCLibrary.framework
- Library/Application Support/Canon/WMCReg.plist
- Library/Image Capture/Devices/Canon MFScanner\*\*\*\*.app
- Library/Image Capture/TWAIN Data Sources/Canon \*\*\*\*.ds
- Library/Image Capture/TWAIN Data Sources/Canon \*\*\*\* USB.ds
- Library/LaunchAgents/jp.co.canon.ScanGearMF.appl.Canon-MF-Scan-Agent.plist
- Library/LaunchAgents/jp.co.canon.ScanGearMF.appl.Canon-MFSU-Agent.plist
- Library/Printers/Canon/MFScanner

Depending on the environment you are using, some or all of the folders and files listed above may not be present.

### 2 Restart macOS.

# Scanning Using the Driver

<b>Scanning Using the Driver</b> .....	26
<b>Scanning from the MF Scan Utility</b> .....	27
<b>Scanning from the MF Toolbox</b> .....	28
<b>Scanning from an Application</b> .....	31
<b>About Guidelines for Resolution Settings</b> .....	32

## Scanning Using the Driver

---

You can scan the documents using a utility that supports the device or other image editing software.

For information on whether the device you are using supports MF Scan Utility or MF Toolbox, check the Readme file.

- ▶ **Scanning from the MF Scan Utility(P. 27)**
- ▶ **Scanning from the MF Toolbox(P. 28)**
- ▶ **Scanning from an Application(P. 31)**
- ▶ **About Guidelines for Resolution Settings(P. 32)**

## Scanning from the MF Scan Utility

This explains the basic procedure for scanning using the MF Scan Utility.

### 1 Set the original in the device.

### 2 Set the device to online.

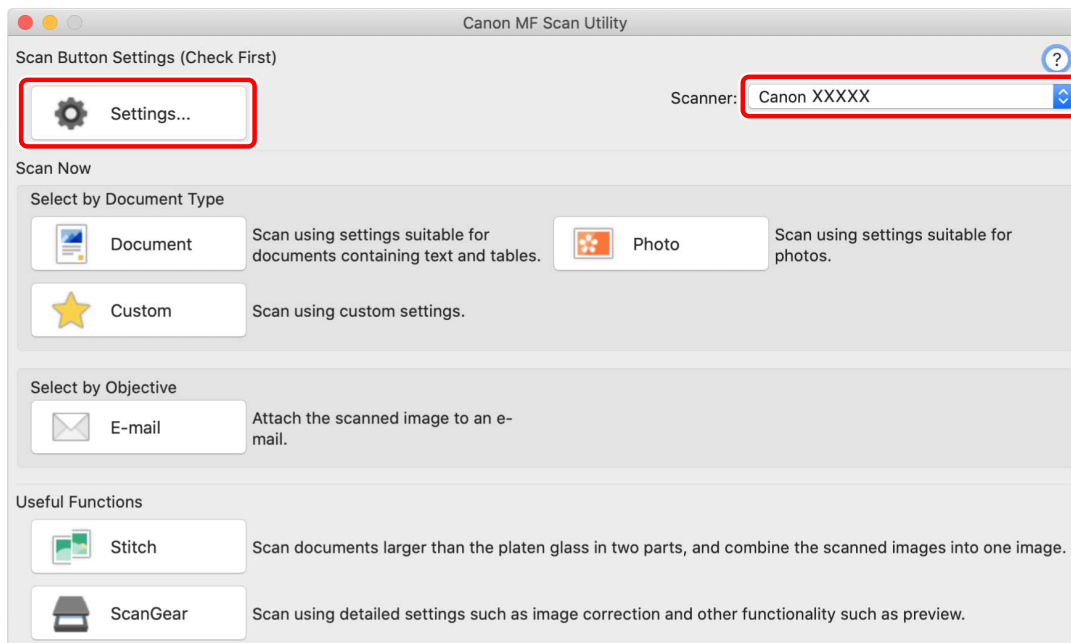
If [System Management Settings] > [Auto Online for Remote Scan] is disabled, select [Scan] > [Remote Scanner] from the scan functions screen and set it to online. For details, refer to the manual of the device.

### 3 Click "Launchpad" in "Dock" → click [Canon MF Scan Utility].

The MF Scan Utility main dialog is displayed.

### 4 Select the device to use from [Scanner]/[Product Name].

If necessary, click [Settings] and configure the detailed settings.



### 5 Click an icon such as [Document], [Photo], etc. according to your needs.

Scanning starts.

The scanned image is saved to the folder specified in the [Save Settings] pane > [Save in] in the [Settings] dialog.

## Related Topics

- MF Scan Utility Settings(P. 35)

## Scanning from the MF Toolbox

---

This explains the basic procedure for scanning using the MF Toolbox.

### 1 Set the original in the device.

### 2 Set the device to online.

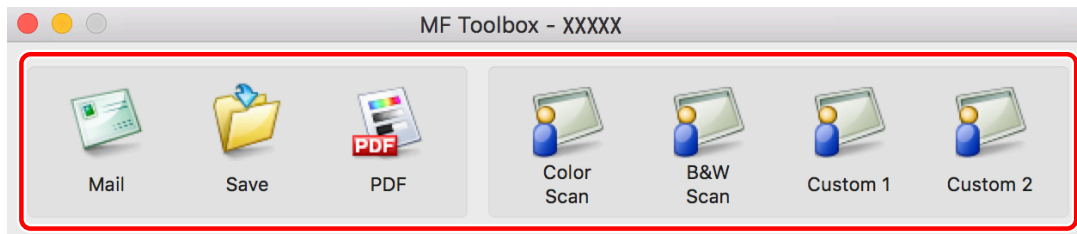
If [System Management Settings] > [Auto Online for Remote Scan] is disabled, select [Scan] > [Remote Scanner] from the scan functions screen and set it to online. For details, refer to the manual of the device.

### 3 Click "Launchpad" in "Dock" → click [MF Toolbox].

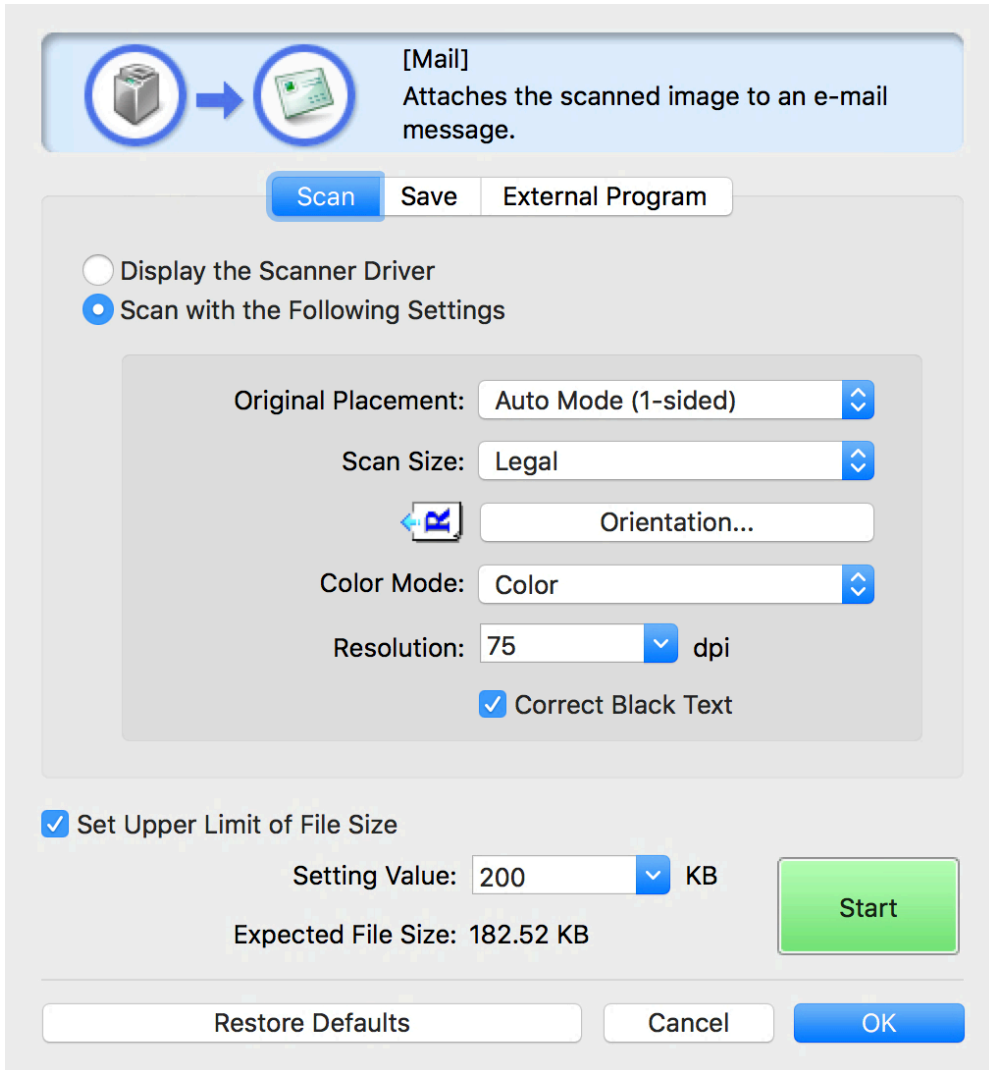
The main dialog corresponding to the device selected in the MF Toolbox is displayed.

To change the device, select the menu bar > [Scanner] → select the device name.

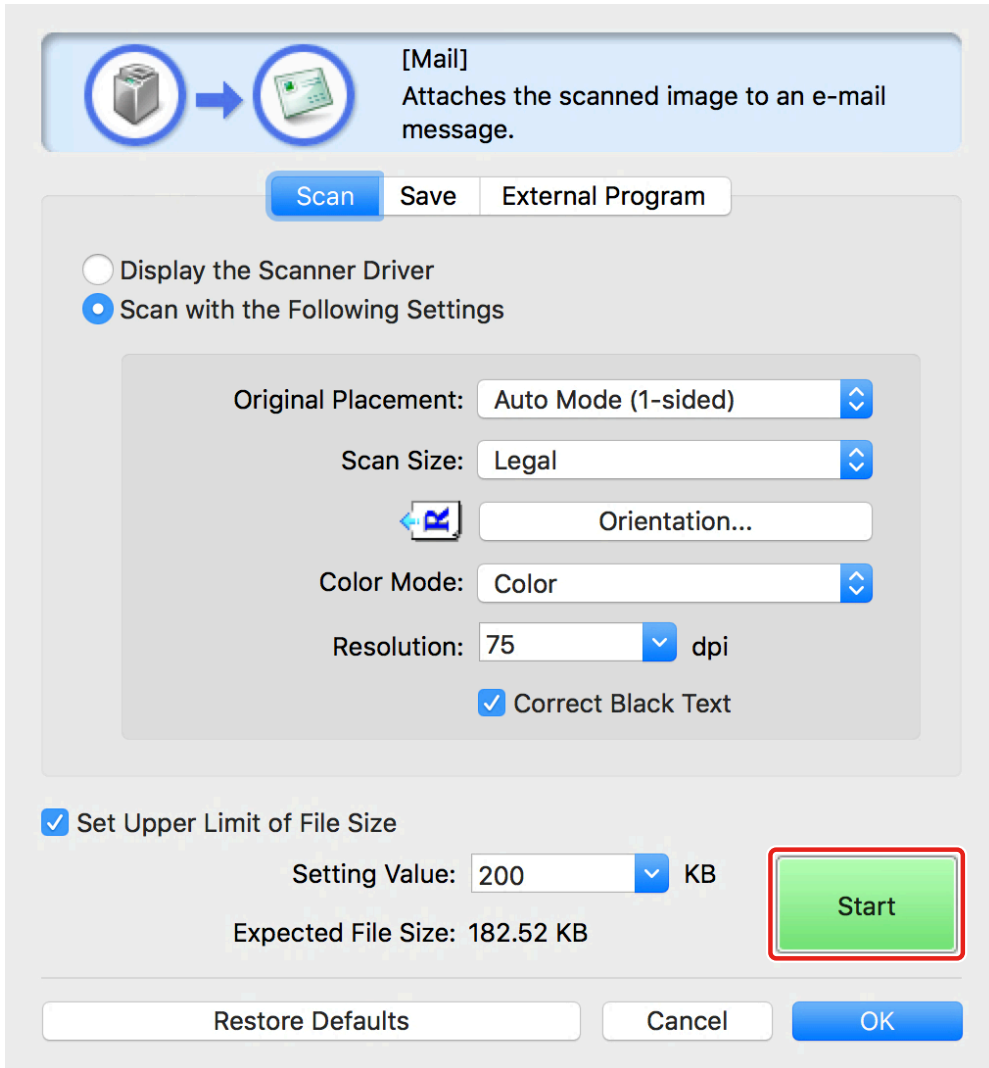
### 4 Click an icon such as [Mail], [Save], etc. according to your needs.



### 5 Change the scan settings if required.



**6** Click [Start].



The scanned image is saved to the folder specified in the [Save] pane > [Save Scanned Image to] in the scan dialog.

## Related Topics

- ▶ MF Toolbox Settings(P. 42)



## Scanning from an Application

---

This explains the basic procedure for scanning using ScanGear MF from an application such as image editing software.

### 1 Set the original in the device.

### 2 Set the device to online.

If [System Management Settings] > [Auto Online for Remote Scan] is disabled, select [Scan] > [Remote Scanner] from the scan functions screen and set it to online. For details, refer to the manual of the device.

### 3 Select the scanning functions from the menu of the application → select the device.

The ScanGear MF dialog is displayed.

The procedure displayed in the ScanGear MF dialog may vary according to the application.

### 4 Configure the scan settings in either the [Simple Mode] or [Advanced Mode] pane and click [Scan].

When scanning is complete, the image is read into the application.



#### NOTE

- You may not be able to scan from the second original onward, or an error message may be displayed after you scan an original. If this happens, set each original one at a time and rescan.

## Related Topics

---

- ▶ [ScanGear MF Settings\(P. 47\)](#)

## About Guidelines for Resolution Settings

---

When scanning, if you set a high resolution (increase the numerical value), the image will be extremely detailed, and if you set a low resolution (decrease the numerical value), the image will be rough.

Guidelines for resolutions to set and the purpose of a scanned image are shown below.

- 150 dpi
  - Color printing
  - Use in a web site
  - Attaching to an email
- 300 dpi
  - Black-and-white printing
  - Saving images to a computer

If you want to magnify the scanned image and print it, set a resolution higher than the above guidelines.

You can set resolution in one of the following settings.

- When using the MF Scan Utility: the [Scan Options] pane of the [Settings] dialog > [Resolution]
- When using the MF Toolbox: the [Scan] pane > [Resolution]
- When using the ScanGear MF: the [Advanced Mode] pane > [Output Settings] > [Resolution]



### NOTE

- If you set the output resolution at double, the size of the image data will quadruple. If the amount of data is too high, errors such as insufficient memory could easily occur, therefore set the minimum resolution required for the purpose.

## Related Topics

---

- ▶ [MF Scan Utility Settings\(P. 35\)](#)
- ▶ [MF Toolbox Settings\(P. 42\)](#)
- ▶ [ScanGear MF Settings\(P. 47\)](#)

# Settings List

<b>Settings List</b> .....	34
<b>MF Scan Utility Settings</b> .....	35
<b>MF Toolbox Settings</b> .....	42
<b>ScanGear MF Settings</b> .....	47

## Settings List

---

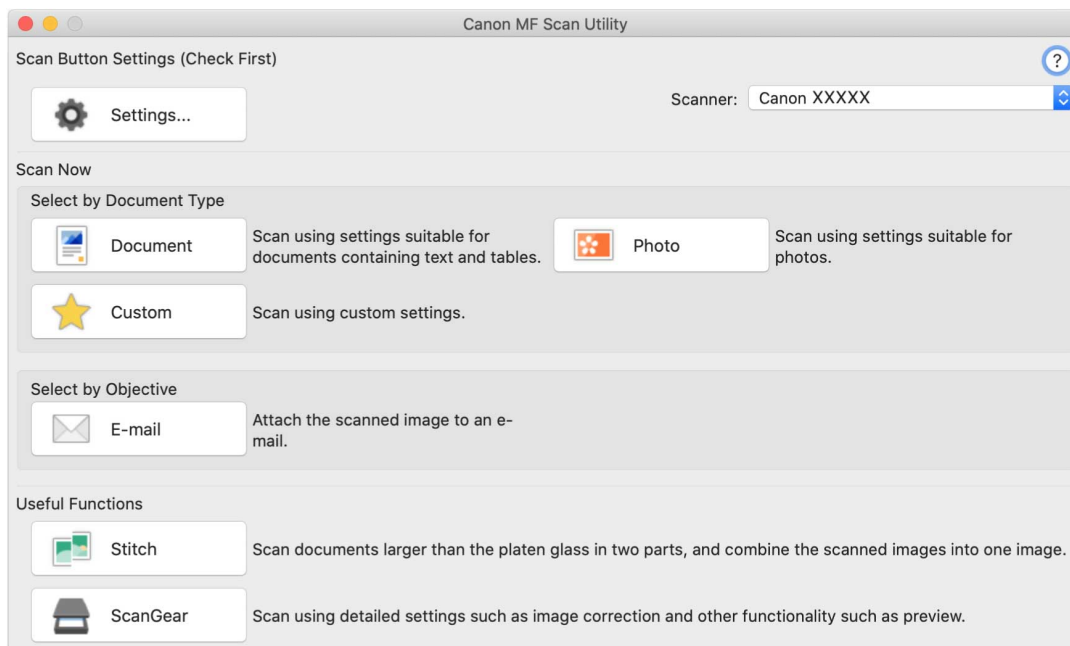
- ▶ **MF Scan Utility Settings(P. 35)**
- ▶ **MF Toolbox Settings(P. 42)**
- ▶ **ScanGear MF Settings(P. 47)**

## MF Scan Utility Settings

This section explains the main dialog that is displayed first when the MF Scan Utility is started and the [Settings] dialog for setting details when scanning.

### Main Dialog

You can select the main scanning functions that can be specified with the MF Scan Utility.



#### [Settings]

Sets details when scanning with the MF Scan Utility.

#### [Scanner]/[Product Name]

Specifies the device to be used for scanning.

#### [Document]

Scans with settings suitable for documents that include text and diagrams.

#### [Photo]

Scans with settings suitable for photographs.

#### [Custom]

Registers frequently used settings as a "profile."

#### [E-mail]

Attaches a scanned image to specified e-mail software.

**[Stitch]**

Combines multiple scans of an original that is too large to fit on the platen into one image.

You can scan originals that are up to about twice the size of the platen.

 [Image Stitch] Dialog

**Toolbar**( /  /  /  /  )

You can delete, manipulate in the preview, enlarge, reduce, rotate, etc. a selected image.

**[Select Output Size]**

Specifies an output size after combining.

**[Scan Direction]**

Specifies a direction for combining.

**[Scan Image 1]**

Scans the part of the original to be scanned first (the part displayed as "1" in the preview area) and displays it in a preview.

**[Scan Image 2]**

Scans the part of the original to be scanned next (the part displayed as "2" in the preview area) and displays it in a preview.

**[Adjust cropping frames]**

When adjusting the area to be saved, adjusts the cropping frame (the dotted-line border) displayed in the preview area.

**[Save Image]**

Saves the combined image.

**[ScanGear]**

Displays the ScanGear MF dialog to set scanning details and start scanning.

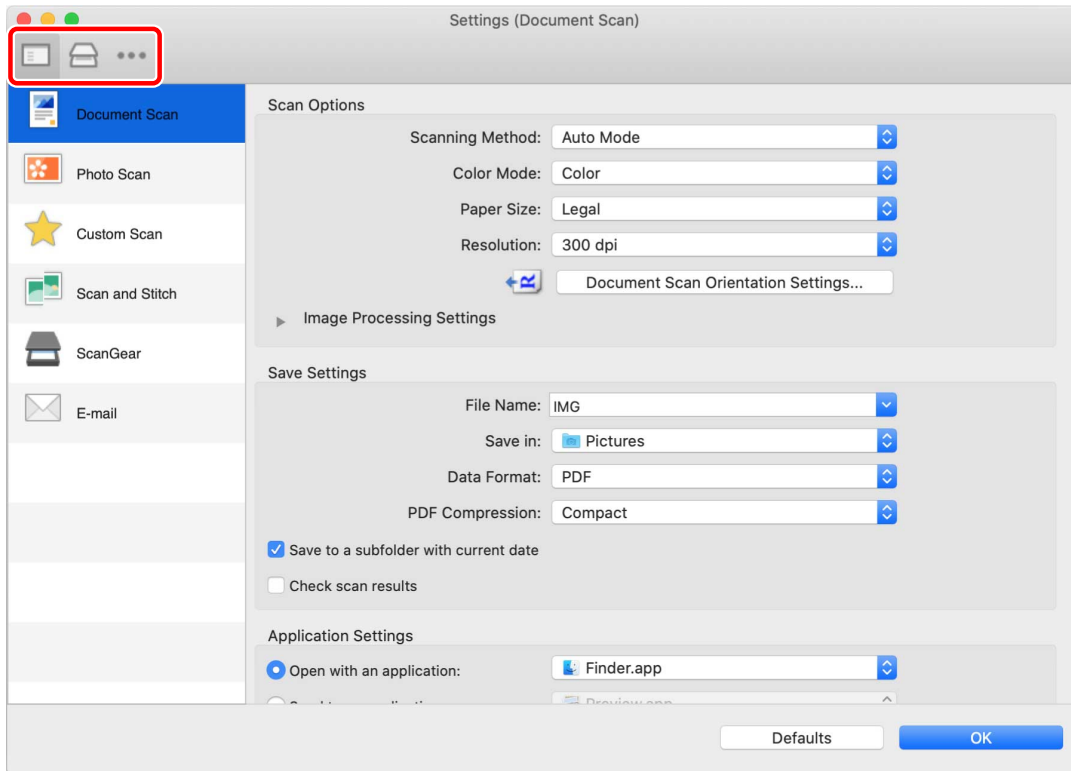
You can adjust the scanning area, set image correction functions, etc. while checking the preview.

**[Settings] Dialog**

You can set scanning details before scanning with the MF Scan Utility.

**Toolbar**

Select whether to scan from the computer or the device, and set details. Also sets basic items for using the MF Scan Utility.



[  ] (scanning from a computer)

Sets details when scanning from the computer using the MF Scan Utility and operations after scanning.

After selecting an icon for one of the items displayed on the left side of the [Settings] dialog, set the necessary items in the pane displayed on the right side. The set items are applied when scanning from the main dialog.

The functions corresponding to the icons of the items displayed on the left side of the [Settings] dialog are the same as the scan functions that you can select in the main dialog.

[  ] (scanning from a device)

Sets details when scanning from the control panel of the device and operations after scanning.

When confirming settings, after selecting the icons for the following items displayed on the left side of the [Settings] dialog, you can confirm them in the pane displayed on the right side.

**[Color Scan]/[B&W Scan]**

The initial values for color and black-and-white scanning are displayed.

**[Custom 1]/[Custom 2]**

The initial values according to the device are displayed. Depending on the device, you can change the icon names.

[  ] (basic settings)

Sets basic items such as the e-mail attachment data size to be used with the MF Scan Utility, the save destination folder for temporary files, etc.

**[E-mail Attachment Size]**

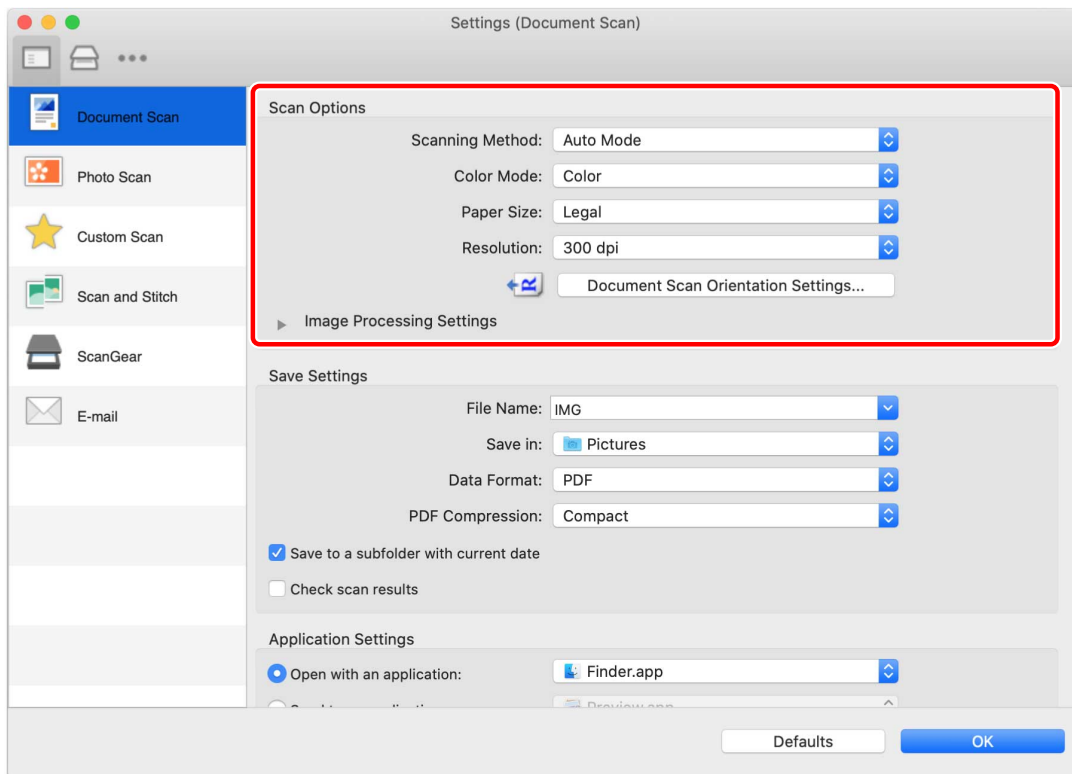
When attaching a scanned image to an e-mail, specifies the file size.

**[Folder for Temporary Files]**

Specifies the folder where images will be temporarily saved.

**[Scan Options] Pane**

When scanning, sets the position to place the original (the platen glass or feeder), the color mode, original size, etc.



**[Scanning Method]**

When scanning, sets the position to place the original (the platen glass or feeder).

If you select [Auto Mode], the original will be scanned from the feeder if it is set in the feeder. If the original is not set in the feeder, the device will scan from the platen.

**[Color Mode]**

Specifies the color mode of the original to be scanned.

**[Paper Size]**

Sets the size of the original to be scanned.

If you select [Custom], you can set any desired original size.

**[Resolution]**

Specifies a resolution when scanning.


**[Document Scan Orientation Settings]**

When the original is set in the feeder, set the scanning direction to match the orientation of the original.

**[Scan both sides when scanning from the feeder]**

Specify this when scanning both sides of an original set in the feeder.

**[Image Processing Settings]**

Sets a detailed image processing method. If you click [  ], you can set the following items.

**[Correct black text]**

Clarifies the contours of black text.

**[Sharpen outline]**

Emphasizes the contours of images to give them a sharp effect. This is effective when scanning photographs etc. that are out of focus.

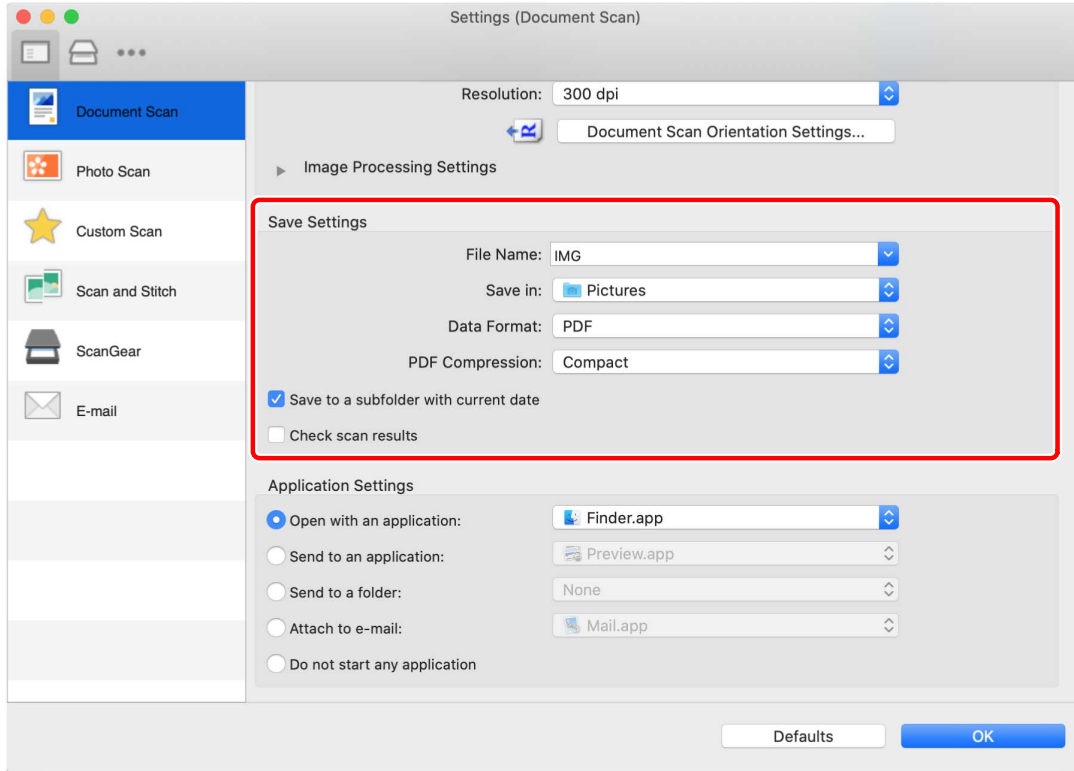
**[Reduce moire]**



Reduces density inconsistencies and moire (striped) patterns that occur when scanning printed photographs, color magazines, etc.

### [Save Settings] Pane

Sets the file name, save destination, data format, etc. of scanned image data.



### [File Name]

Specifies file names for images to be saved.

When scanning an image, the date and a four-digit number such as "20XX0101\_0001" are attached after the specified file name.

### [Save in]

Specifies the save destination for a scanned image.

### [Data Format]

Sets the format to save the scanned image data as.

### [JPEG Image Quality]

If you have selected [JPEG/Exif] for [Data Format], set the image quality.

### [PDF Compression]

If you have selected [PDF (Divide into Single-Page Files)]/[PDF] for [Data Format], set a compression ratio.

### [Save to a subfolder with current date]

A subfolder named after the scan date is automatically created in the folder specified in [Save in], and the image is saved therein.

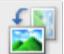
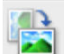
### [Check scan results]

When you begin scanning, the [Save Settings] dialog is displayed. Specify the data format, image order, save destination, etc. while checking the thumbnail image of the scan result.

 [Save Settings] Dialog

## Thumbnail images

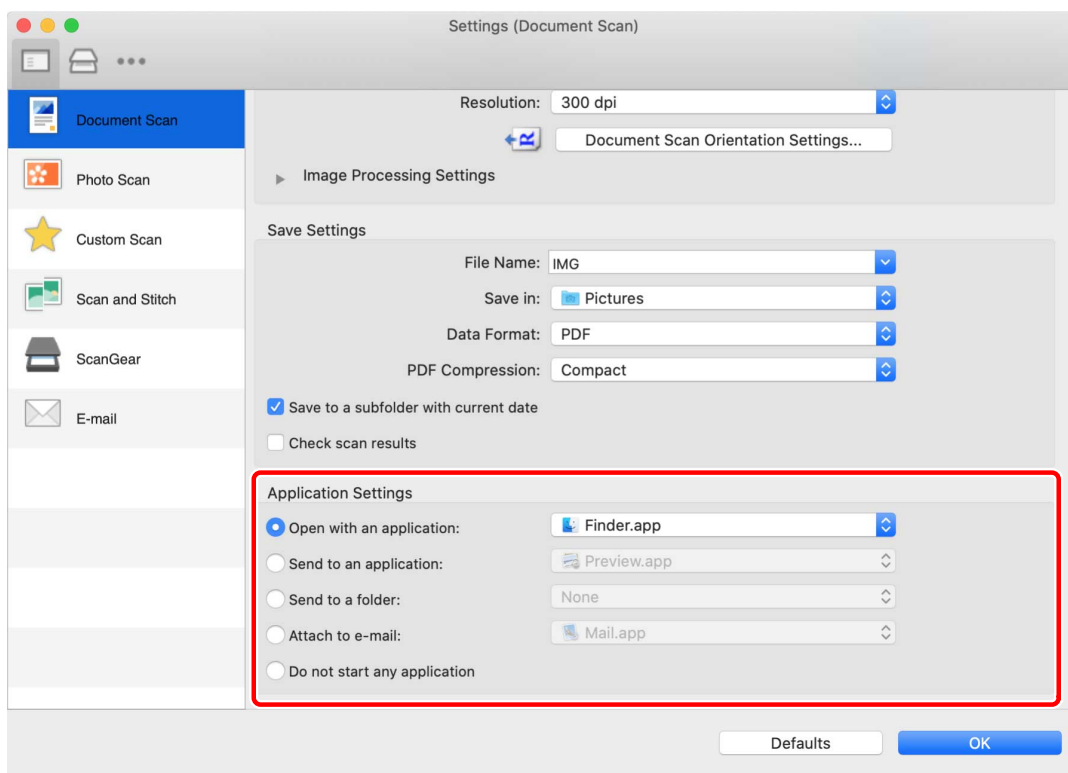
You can manipulate the image, change the save order, rotate the image, etc.

- To change the save order: drag and drop the images
- To rotate an image: select the image → click [  ]/[  ].

Items in the [Save Settings] dialog other than the thumbnail images are the same as the items in the [Save Settings] pane.

## [Application Settings] Pane

Sets the method of linking to an application when opening and processing scanned images.



### [Open with an application]

Specifies an application to use for editing scanned images.

### [Send to an application]

Specifies an application to transfer to for viewing and managing scanned images.

### [Send to a folder]

Specifies the save destination when saving a scanned image to a folder other than the prescribed folder. Normally, scanned images are saved to the folder specified in the [Save Settings] pane > [Save in] in the [Settings] dialog.

### [Attach to e-mail]

Specifies the e-mail software to use in order to attach a scanned image to an e-mail.

### [Do not start any application]

Saves the scanned image to the prescribed folder without opening another application.

Normally, scanned images are saved to the folder specified in the [Save Settings] pane > [Save in] in the [Settings] dialog.

**[E-mail Client]**

Adds mail software.

**Related Topics**

---

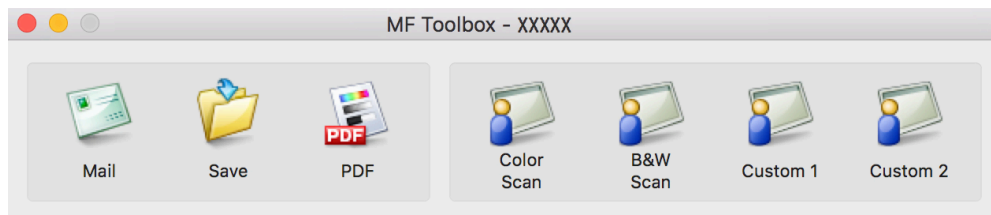
- ▶ [Scanning from the MF Scan Utility\(P. 27\)](#)
- ▶ [ScanGear MF Settings\(P. 47\)](#)

## MF Toolbox Settings

This section explains the main dialog displayed first when MF Toolbox is started, the scan dialog for setting details when scanning, and the [Preferences] dialog for setting content that can be customized with MF Toolbox.

### Main Dialog

You can select a scanning method according to your needs. You can also register settings updated in the scan dialog.



#### [Mail]

Attaches a scanned image to an e-mail.

#### [Save]

Saves a scanned image to macOS.

#### [PDF]

Saves a scanned image as a PDF format file.

#### [Color Scan]

Saves a scanned image with color settings. You can register the updated settings in the scan dialog.

#### [B&W Scan]

Saves a scanned image with black-and-white settings. You can register the updated settings in the scan dialog.

#### [Scan-1]-[Scan-4]/[Custom 1]/[Custom 2]

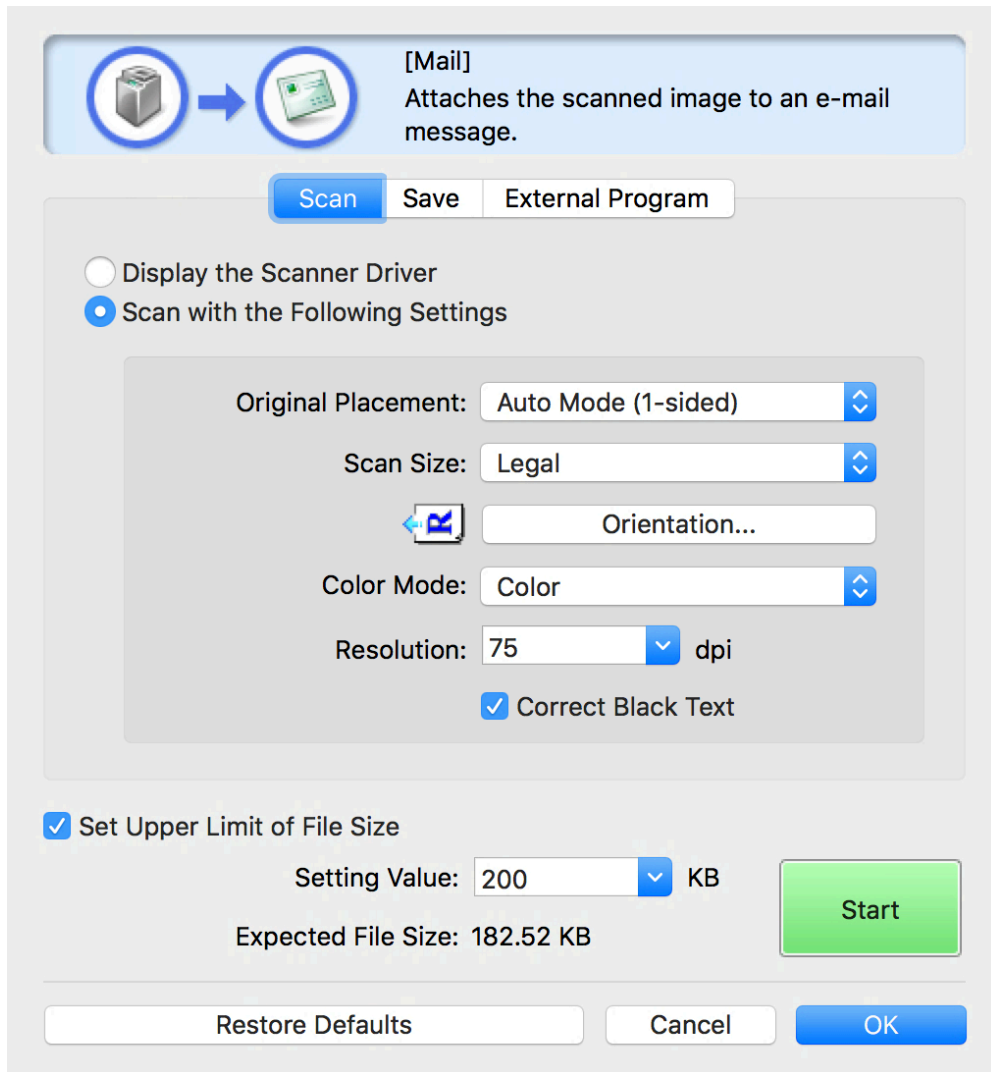
The initial values for scanning are set according to the settings of the device. Depending on the device, you can change the names of the icons in the [Preferences] dialog.

You can also register settings updated in the scan dialog.

### Scan Dialog

You can set scan method details, execute scanning, etc.

Refer to the scanning method icon names displayed at the top of the dialog concerning what scanning method settings to update or what scanning method to actually scan with.



### [Set Upper Limit of File Size]

Sets the maximum value for the file size of scanned images in [Setting Value]

### [Expected File Size]

Displays the predicted size of the image file when scanning with the set content. If the predicted size exceeds the numerical value of [Setting Value] set in [Set Upper Limit of File Size], it is displayed in red.

### [Start]

Executes scanning.

### [Scan] Pane

Sets the position where the original is set, scan size, color mode, etc.

You can also specify to scan using the settings of ScanGear MF rather than the settings of MF Toolbox.

### Scan settings option button

If you select [Display the Scanner Driver] and click [Start], ScanGear MF is started and scanning is performed with the content set by ScanGear MF.

If you select [Scan with the Following Settings], you can set MF Toolbox.

**[Original Placement]**

When scanning, sets the position to place the original (the platen glass or feeder).

If you select [Auto Mode], the original will be scanned from the feeder if it is set in the feeder. If the original is not set in the feeder, the device will scan from the platen.

**[Scan Size]**

Sets the size of the original to be scanned.

**[Orientation]**

When scanning from the feeder, selects the orientation of the original.

When [Original Placement] > [Feeder (2-sided)]/[Auto Mode (2-sided)] is selected, you can also specify [Book Opening]

**[Color Mode]**

Specifies the color mode of the original to be scanned.

**[Resolution]**

Specifies a resolution when scanning.

**[Correct Black Text]**

Clarifies the contours of black text.

**[Save] Pane**

Specifies the file name with which the scanned image will be saved, the save destination, etc. You can set the details when saving as a PDF in the [PDF Settings] dialog.

**[File Name]**

Specifies the file name with which the scanned image will be saved.

If a file with the same name exists, a number starting from "1" is attached to the end of the file name.

**[Save as Type]**

Specifies the file format in which the scanned image will be saved.

**[PDF Settings]**

Sets details when saving a scanned image in PDF format.

**[PDF Settings] Dialog****[PDF Type]**

Specifies whether a one-page PDF is created for each scanned image file or whether a PDF comprising multiple pages is created.

If you select [Add Page], a page of the scanned image is added and saved to the PDF file specified in [Create PDF File Based On].

**[PDF Compression]**

Specifies a PDF compression method.

If you select [Compact], the file size will be smaller than [Standard] but the image quality will decrease.

If [Black and White] is selected for the [Scan] pane > [Color Mode], a file equivalent to [Standard] will be saved even if you select [Compact].

**[Save Scanned Image to]**

Specifies the save destination for a scanned image.

**[Save Pictures to a Subfolder with Current Date]**

Creates a subfolder named after the scan date in the folder specified in [Save Scanned Image to], and saves the image therein.

**[Open the Storage Location After Scanning Is Finished]**

Opens the folder where the scanned image has been saved after scanning.

**[External Program] Pane****[Program to Start After Scanning Is Finished]**

Starts the application set for the scanned image.

**[Preferences] Dialog**

Sets the computer that sends scanned images, the button names for scanning methods displayed in the main dialog, etc.

[Preferences]  
Configures scanner settings.

**Settings of the Computer Name and Comments**

Computer Name: XXXXXXX

Comment

Color Scan: Scan-1

B&W Scan: Scan-2

Custom 1: Scan-3

Custom 2: Scan-4

Close Toolbox After Finishing Scanning When Started from Scanner

Restore Defaults      Cancel      OK

**[Start Key on the Scanner]**

When initiating scanning from the device, specifies which method registered in MF Toolbox to scan with or whether to display the main dialog.

**[Computer Name]**

Sets the computer name to be displayed as the scanned image transmission destination in the device.

**[Button 1]-[Button 4]**

Sets the [Display Name] and [Comment] of the buttons displayed in the main dialog. Depending on the device, the set comment may be displayed at the device when scanning.

**[Color Scan]/[B&W Scan]/[Custom 1]/[Custom 2]**

Sets the [Comment] of the buttons displayed in the main dialog. Depending on the device, the set comment may be displayed at the device when scanning.

## **[Close Toolbox After Finishing Scanning When Started from Scanner]**

When scanning from the device, closes MF Toolbox when scanning is complete.

### **Related Topics**

---

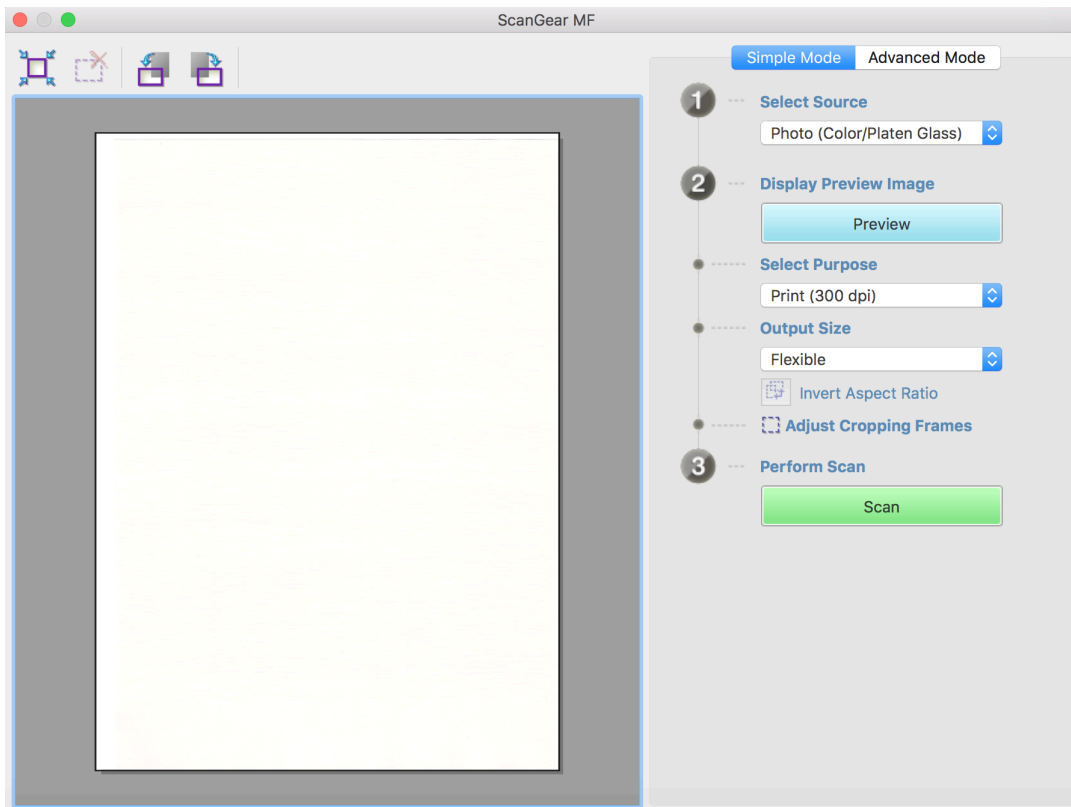
- ▶ **Scanning from the MF Toolbox(P. 28)**
- ▶ **ScanGear MF Settings(P. 47)**



## ScanGear MF Settings

In ScanGear MF, you can set and adjust the intended use of the scanned image etc.

When scanning, you can configure settings in either the [Simple Mode] pane or the [Advanced Mode] pane.



### Toolbar

In the preview, you can specify and manipulate the scan area (cropping frame).

If you manipulate the cropping frame with the mouse, you can change the size of and move the scanning area. Also, to specify multiple cropping frames, click outside the cropping frame and drag to enclose the area you want to additionally specify. You can set up to 10 cropping frames.



Sets a cropping frame the same size as the image (auto crop).

The cropping frame narrows when you click the icon.



Deletes the selected cropping frame.



Rotates the image 90 degrees to the right or left.

## [Simple Mode] Pane

This pane combines the basic settings of the ScanGear MF scan settings. If you operate them in order of [1] to [3] in the pane, you can configure and scan with all the necessary settings.

### [Select Source]

Sets the type, color, and where the original has been set. The image settings are adjusted according to the state of the original. If you select [Magazine (Color/Platen Glass)], you can reduce inconsistencies in contrast and moire patterns that occur when scanning printed materials.

### [Preview]

When the original is set on the platen, this previews the current settings. The cropping frame that indicates the scanning area is displayed as dotted lines in the preview. In the preview, you can adjust the settings while checking the image.

If the cropping frame is not displayed, specify the area you want to scan in the previewed image by dragging the mouse.


### [Select Purpose]

Specifies the intended use of a scanned image. The resolution is set according to the intended use.

### [Output Size]

Specifies the printed size or displayed size of the image according to the purpose of use in [Select Purpose]. If you select [Flexible], you can change the size by dragging the cropping frame displayed in the preview.

If you select [Add/Delete], you can register the output size. You can register a maximum of 10 output sizes for each purpose of use in [Select Purpose].

Clicking [  Invert Aspect Ratio] switches the cropping frame between horizontal and vertical and switches the orientation of the output size. You cannot operate this if [Flexible] is selected.

### [Scan]

Scans the original with the current settings. When cropping frames have not been set, it scans the entire original.

## [Advanced Mode] Pane

Adjusts the image quality in more detail than the [Simple Mode] pane.

### [Input Settings]

Sets the setting method, size, and color mode of the original.

### [Original Placement]

Specifies the method of setting the original in the device.

### [Scan Size]

Specifies the scan size when scanning an original. The same size as the original is normally selected.

If you select [Add/Delete], you can set any desired size.

**[Orientation]**

If you set the original in the feeder, this is set to match the orientation of the original. Also, when you set a double-sided original, you can also set [Book Opening].

**[Color Mode]**

Specifies the color mode of the original to be scanned.

**[Output Settings]**

Sets the output resolution and output size.


**[Resolution]**

Specifies the resolution according to the purpose of the image.

**[Output Size]**

Specifies the print size or display size of the scanned image.

If you select [Add/Delete], you can set any desired size.

Clicking [  ] changes the direction of the cropping frame and switches the orientation of the output size.

When [Flexible] is selected, you can drag and select the part you want to scan in the image displayed in the preview to set the output size.

If you select [Add/Delete], you can register the output size. You can register a maximum of 10 output sizes for each [Purpose] in [Add/Delete].

**[Data Size]**

In the [Resolution] and [Output Size] settings, the image data size is displayed when scanning an original.

**[Image Settings]**

When scanning a photographic original, this corrects scratches and color fade.

You can set this when color or [Grayscale] is selected in [Input Settings] > [Color Mode].

**[Use Unsharp Mask]**

Emphasizes the contours of images to give them a sharp effect. This is effective when scanning photographs etc. that are out of focus.

**[Use Descreen]**

Reduces density inconsistencies and moire (striped) patterns that occur when scanning printed photographs, color magazines, etc.

**[Correct Black Text]**

Clarifies the contours of black text.

**[  ](Threshold)**

Adjusts the threshold value for black and white images.

You can set this when [Black and White] is selected in [Input Settings] > [Color Mode].

**[Threshold Level]**

When scanning with two tones of black and white, changes the threshold value and adjusts the contrast.

**[Color Settings]**

Configures settings relating to color matching and gamma adjustment.

### **[Color Correction]**

Specifies the color adjustment method.

[Color Matching]: Automatically matches the colors of the scanner, monitor, and color printer. You can set this when color is selected for the [Advanced Mode] pane > [Color Mode].

[None]: Does not perform color matching. You can set this when color or [Grayscale] is selected in the [Advanced Mode] pane > [Color Mode].

### **[Display Gamma]**

Sets the gamma value of the display so that the image is displayed with a brightness that is faithful to the original.

When color or [Grayscale] is selected for the [Advanced Mode] pane > [Color Mode], the gamma value setting is reflected in the image.

### **[Preview]**

When the original is set on the platen, this previews the current settings. The cropping frame that indicates the scanning area is displayed as dotted lines in the preview.

In the preview, you can adjust the settings while checking the image.

If the cropping frame is not displayed, specify the area you want to scan in the previewed image by dragging the mouse.

### **[Scan]**

Scans the original with the current settings. When cropping frames have not been set, it scans the entire original.

## **Related Topics**

---

- ▶ **Scanning from an Application(P. 31)**

# Troubleshooting

<b>Troubleshooting</b> .....	52
<b>Cannot Scan</b> .....	53
<b>The Scanned Image is Dirty</b> .....	54

# Troubleshooting

---

This explains solutions to common problems.

Limitations and precautions are also included in the Readme file.

▶ **Cannot Scan(P. 53)**

▶ **The Scanned Image is Dirty(P. 54)**

## Cannot Scan

---

If scanning does not start, the computer does not recognize the scanner, or you cannot perform scanning, it could be caused by one of the following.

Follow the instructions described in each "Remedy."

### Cause 1.

**The device settings are not configured correctly**

#### Remedy

Check the connection state and settings of the computer and device.

- If connected by Bonjour, check that Bonjour is in a usable state in the control panel.
- If connected by USB via a USB hub, check whether scanning is possible with the USB cable connected directly to the computer. If scanning is possible, check that the USB hub is operating correctly.

### Cause 2.

**The remote scanner function is offline**

#### Remedy

Set the remote scanner function of the device to online. For details, refer to the manual of the device.

### Cause 3.

**The device is not set in the utility (MF Scan Utility or MF Toolbox) you are using**

#### Remedy

After installing the driver, it is necessary to register the device in the utility.

### Cause 4.

**If you are using ScanGear MF, [Original Placement] is not set correctly**

#### Remedy

In the [Advanced Mode] dialog, correctly set where the original is set in the device in [Original Placement].

## Related Topics

---

- ▶ Scanning from the MF Scan Utility(P. 27)
- ▶ Scanning from the MF Toolbox(P. 28)

## The Scanned Image is Dirty

---

If the scanning section of the device is dirty or if the original is unclear, it may be caused by one of the following. Follow the instructions described in each "Remedy."

### Cause 1.

**The platen glass or platen cover is dirty**

#### Remedy

Clean the platen glass, platen cover, or feeder scanning area. For details, refer to the manual of the device.

### Cause 2.

**The state of the original is bad**

#### Remedy

The quality of the scanned image may be improved by correction processing in the utility. Set this in the pane of the utility corresponding to the device.

- In MF Scan Utility  
In the [Scan Options] pane of the [Settings] dialog > the settings in [Image Processing Settings]
- In MF Toolbox  
The settings in the [Scan] pane of the scan dialog
- In ScanGear MF  
The settings in the [Advanced Mode] pane

## Related Topics

---

- ▶ [MF Scan Utility Settings\(P. 35\)](#)
- ▶ [MF Toolbox Settings\(P. 42\)](#)
- ▶ [ScanGear MF Settings\(P. 47\)](#)



This Font Software is licensed under the SIL Open Font License, Version 1.1.

This license is copied below, and is also available with a FAQ at: <http://scripts.sil.org/OFL>

-----  
SIL OPEN FONT LICENSE Version 1.1 - 26 February 2007  
-----

#### PREAMBLE

The goals of the Open Font License (OFL) are to stimulate worldwide development of collaborative font projects, to support the font creation efforts of academic and linguistic communities, and to provide a free and open framework in which fonts may be shared and improved in partnership with others.

The OFL allows the licensed fonts to be used, studied, modified and redistributed freely as long as they are not sold by themselves. The fonts, including any derivative works, can be bundled, embedded, redistributed and/or sold with any software provided that any reserved names are not used by derivative works. The fonts and derivatives, however, cannot be released under any other type of license. The requirement for fonts to remain under this license does not apply to any document created using the fonts or their derivatives.

#### DEFINITIONS

"Font Software" refers to the set of files released by the Copyright Holder(s) under this license and clearly marked as such. This may include source files, build scripts and documentation.

"Reserved Font Name" refers to any names specified as such after the copyright statement(s).

"Original Version" refers to the collection of Font Software components as distributed by the Copyright Holder(s).

"Modified Version" refers to any derivative made by adding to, deleting, or substituting -- in part or in whole -- any of the components of the Original Version, by changing formats or by porting the Font Software to a new environment.

"Author" refers to any designer, engineer, programmer, technical writer or other person who contributed to the Font Software.

#### PERMISSION & CONDITIONS

Permission is hereby granted, free of charge, to any person obtaining a copy of the Font Software, to use, study, copy, merge, embed, modify, redistribute, and sell modified and unmodified copies of the Font Software, subject to the following conditions:

- 1) Neither the Font Software nor any of its individual components, in Original or Modified Versions, may be sold by itself.
- 2) Original or Modified Versions of the Font Software may be bundled, redistributed and/or sold with any software, provided that each copy contains the above copyright notice and this license. These can be included either as stand-alone text files, human-readable headers or in the appropriate machine-readable metadata fields within text or binary files as long as those fields can be easily viewed by the user.
- 3) No Modified Version of the Font Software may use the Reserved Font Name(s) unless explicit written permission is granted by the corresponding Copyright Holder. This restriction only applies to the primary font name as presented to the users.
- 4) The name(s) of the Copyright Holder(s) or the Author(s) of the Font Software shall not be used to promote, endorse or advertise any Modified Version, except to acknowledge the contribution(s) of the Copyright Holder(s) and the Author(s) or with their explicit written permission.
- 5) The Font Software, modified or unmodified, in part or in whole, must be distributed entirely under this license, and must not be distributed under any other license. The requirement for fonts to remain under this license does not apply to any document created using the Font Software.

#### TERMINATION

This license becomes null and void if any of the above conditions are not met.

#### DISCLAIMER

THE FONT SOFTWARE IS PROVIDED "AS IS", WITHOUT WARRANTY OF ANY KIND, EXPRESS OR IMPLIED, INCLUDING BUT NOT LIMITED TO ANY WARRANTIES OF MERCHANTABILITY, FITNESS FOR A PARTICULAR PURPOSE AND NONINFRINGEMENT OF COPYRIGHT, PATENT, TRADEMARK, OR OTHER RIGHT. IN NO EVENT SHALL THE COPYRIGHT HOLDER BE LIABLE FOR ANY CLAIM, DAMAGES OR OTHER LIABILITY, INCLUDING ANY GENERAL, SPECIAL, INDIRECT, INCIDENTAL, OR CONSEQUENTIAL DAMAGES, WHETHER IN AN ACTION OF CONTRACT, TORT OR OTHERWISE, ARISING FROM, OUT OF THE USE OR INABILITY TO USE THE FONT SOFTWARE OR FROM OTHER DEALINGS IN THE FONT SOFTWARE.