

PHILIPS

Fidelio

Wireless Home Speaker FS1



User manual

Register your product and get support at:
www.philips.com/support

Contents

1	Important	3	7	Product specifications	16
	Safety	3			
	Help and support	3			
2	Your wireless speaker	4	8	Troubleshooting	17
	What's in the box	4			
	Overview of the speaker	4			
3	Get started	6	9	Notice	18
	Plug in the power	6			
	Turn on and off	6			
4	Connect	7			
	Connect to Wi-Fi (Wireless Operation)	7			
	Connect the soundbar to Philips Play-fi enabled TV	10			
5	Lighting operation	11			
	Pairing with Ambilight TV	11			
	Follow Music	12			
	Mood Light mode	12			
	Adjust brightness	13			
	LED light Off	13			
	Overview	13			
6	Play	14			
	Play from Bluetooth devices	14			
	Control playback	14			
	Multi-point control	14			
	Listen to an external device	15			
	Listen to Spotify	15			
	Upgrade Firmware	15			
	Factory reset	15			

1 Important

Safety

Important safety instructions

- Make sure that the power supply voltage corresponds to the voltage on the back or the underside of the unit.
- The speaker shall not be exposed to dripping or splashing.
- Do not place any source of danger on the speaker (e.g. liquid filled objects, lit candles).
- Make sure that there is enough free space around the speaker for ventilation.
- Please use the speaker safely in an environment with temperature between 0°C and 45°C.
- Only use attachments and accessories specified by the manufacturer.



Warning

- Never remove the casing of this speaker.
- Never lubricate any part of this speaker.
- Place this speaker on a flat, hard and stable surface.
- Never place this speaker on other electrical equipment.
- Only use this speaker indoors. Keep this speaker away from water, moisture and liquid-filled objects.
- Keep this speaker away from direct sunlight, naked flames or heat.
- Risk of explosion if a battery is replaced by an incorrect type.

For 5G WiFi Device

The device for operation in the band 5150–5350 MHz is only for indoor use to reduce the potential for harmful interference to co-channel mobile satellite systems.

AT	BE	BG	CZ	DK	EE	FR
DE	IS	IE	IT	EL	ES	CY
LV	LI	LT	LU	HU	MT	NL
NO	PL	PT	RO	SI	SK	TR
FI	SE	CH	UK	HR		

Help and support

For extensive online support, visit www.philips.com/support to:

- download the user manual and the quick start guide
- watch video tutorials (available only for selected models)
- find answer to frequently answered questions (FAQs)
- email us a question
- chat with our support representative

Follow the instructions on the website to select your language, and then enter your product model number. Alternatively, you can contact Consumer Care in your country. Before you contact, note down the model number and serial number of your product. You can find this information on the back or bottom of your product.

2 Your wireless speaker

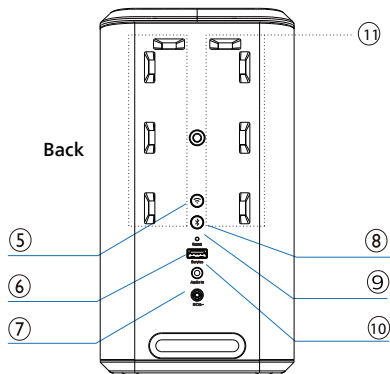
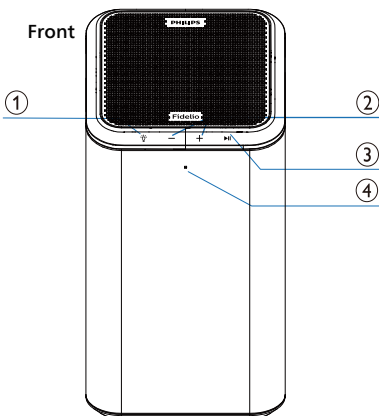
Congratulations on your purchase, and welcome to Philips! To fully benefit from the support that Philips offers, register your product at www.philips.com/support.

What's in the box

Check and identify the contents of your package:







- Speaker
- Power adaptor
- Power cable
- Quick start guide
- Safety sheet
- Worldwide warranty

Overview of the speaker



- Indicate the status.
 - Press and hold for 3 seconds to enter the pairing with Ambilight TV mode.
 - Press to select the LED light mode.
- Press to increase or decrease volume.
 - Press and once to increase the LED light brightness.
 - Press and once to decrease the LED light brightness.
- Play, pause or resume in Bluetooth/Play-Fi playback.
 - Press and once to select next LED light color.
- Wi-Fi LED indicator (White)**

LED State	Status
Blink	Wi-Fi Access Point (AP) mode
Double blink	Wi-Fi Protected Setup (WPS) mode
Constant on	Connected / Pairing successful

- ⑤  **Wi-Fi Setup button**
- Trigger Wi-Fi setup for Play-Fi.
 - Press and hold the button for 3 seconds to active the WPS mode.
 - Press and hold the button for 8 seconds to active the AP mode.
- ⑥  **For service**
- USB socket for speaker software upgrade only. No playback function.
- ⑦  **DC In**
- Connect to the power supply.
- ⑧ 
- Press and hold to activate the pairing function or disconnect the existing paired Bluetooth device.
- ⑨  **Reset**
- Press with a sharp object for 5 seconds to restore factory defaults.
- ⑩  **Audio In**
- Audio input socket (3.5mm) for an external audio device.
- ⑪ **Built-in LED light**

3 Get started

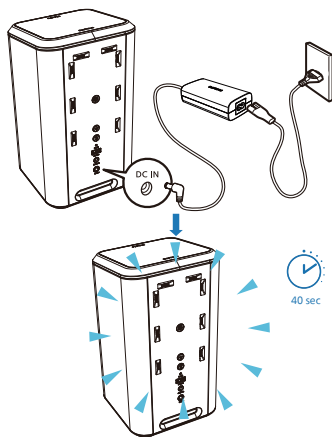
Note

- The speaker will turn off automatically after 15 minutes without user operations and music playback.

Plug in the power

- The speaker is powered by DC input.
- Connect the adapter cable to the DC in port of the speaker and then into a mains socket.
- Risk of product damage! Ensure that the power supply voltage corresponds to the voltage printed on the back or the underside of the unit.

LED State	Status
Turn around in blue color for 40 seconds	Attempting to connect to the router
Turn off	Wi-Fi connection is successful
Blink red for 5 seconds	Wi-Fi connection failed



Turn on and off

Unplug the adapter cable from the main socket to turn off the speaker.

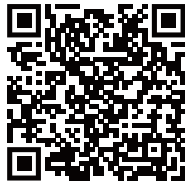
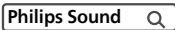
4 Connect

Connect to Wi-Fi (Wireless Operation)

(For iOS and Android version)

By connecting this unit and mobile phones, tablets (such as iPad, iPhone, iPod touch, Android phones, etc.) to the same Wi-Fi network, you can then use the Philips Sound app powered by DTS Play-fi to control the soundbar to listen to audio files.

- 1 Download and install the Philips sound app powered by DTS play-fi on a phone or tablet.



- Make sure your router is turned on and working properly.

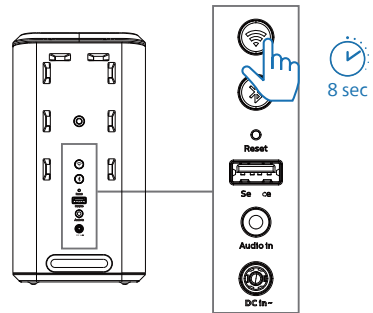
Note

- Depending on the device version, the operation screen and the way to perform operations may vary.

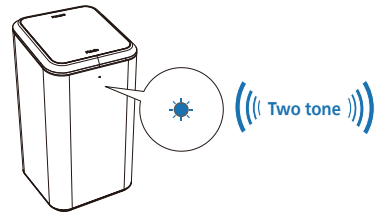
- 2 Connect your phone or tablet to the same Wi-Fi network that you want to connect your soundbar.



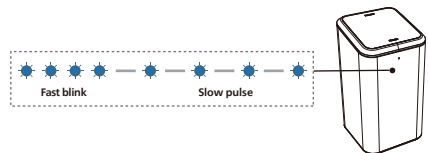
- 3 Press and hold (Wi-Fi) button located at the back cabinet for 8 seconds to trigger the Wi-Fi connection



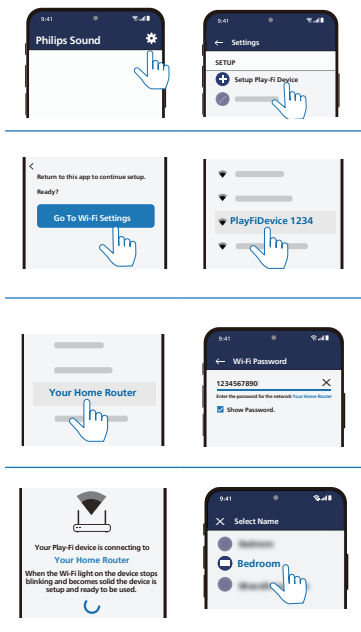
- Until the speaker make a second tone and then release the button



- 4 Wait until the Wi-Fi light indicator on the front cabinet goes from a fast blink to a slow pulse. When it begins pulsing slowly, it indicates that the speaker is entering the Wi-Fi setup mode.





- 5 Launch the Philips Sound app powered by DTS Play-fi. Follow the instructions in the app to connect this product to your Wi-Fi network.



- 6 After successful Wi-Fi connection, the Wi-Fi light indicator will stop pulsing and turn solid. Once you set up this product on your Wi-Fi network, you can control it from any smartphone or tablet on the same network.
- 7 After connection, you can change the device name. There are several names to choose from or create your own by choosing Custom Name at the end of the name list. Otherwise, it follows the default name.

- 8 After connection, this product may perform a software update. Upgrade to the latest software when it is your first time set up. The software upgrade may take several minutes. Do not unplug your speaker, turn off your device, or leave the network during the update.

Note

- After connection, the product may perform a software update. Upgrade is required after initial set up. Without the upgrade, not all product features can be available.
- When the first time set up is not successful, hold down the  (Wi-Fi) button on the soundbar for 8 seconds until the second tone can be heard and the Wi-Fi light is changed to a slow pulse. Reset the Wi-Fi connection, restart the app and start the set up again.
- If you want to change from one network to another, you need to set up the connection again. Press hold down the  (Wi-Fi) button on the soundbar for 8 seconds to reset the Wi-Fi connection.
- When the first time set up is not successful, please close the Philips Sound app powered by DTS Play-fi. Restart the app and try the setup again.

AirPlay setup

Use AirPlay to set up the Wi-Fi connection of iOS device (iOS7 or later) and speaker.

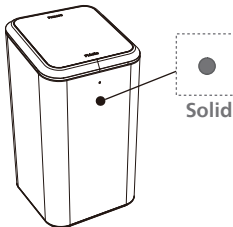
- 1 iOS device: Settings > Wi-Fi > select home network 【Play-fi device (xxxxxx)】
 - Go to the Wi-Fi set up. The Play-Fi device name displays in around 5 seconds.



- Select the Play-Fi device in the Airplay set up.
- Press "Done" when set up complete



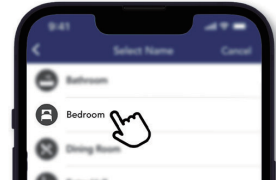
- After successful Wi-Fi connection, the Wi-Fi light indicator will stop pulsing and turn solid.



- 2 Return to Philips Sound App to name the device.

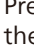

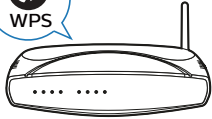


- 3 After connection, you can change the device name. There are several names to choose from or create your own by choosing Custom Name at the end of the name list. Otherwise, it follows the default name.

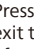


WPS mode

If your router has Wi-Fi Protected Setup (WPS), you can set up the connection without entering a password.

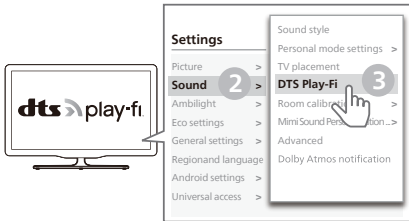
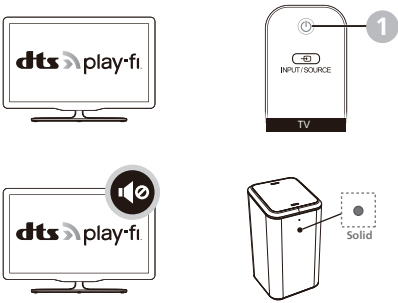
- 1 Press and hold the  (Wi-Fi) button for 3 seconds. You will hear a tone and the Wi-Fi light will begin double blink.
- 2 Press the WPS button on your router. The button is normally marked with this WPS logo.  
- 3 After successful Wi-Fi connection, the Wi-Fi light indicator will stop pulsing and turn solid.

Note

- WPS is not a standard feature on all routers. If your router does not have WPS then use Standard Wi-Fi Setup.
- Press the  (Wi-Fi) button once if you want to exit the WPS mode or it will automatically exit after 2 minutes.

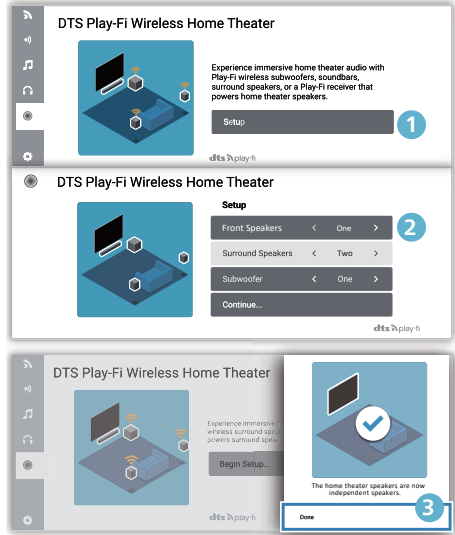
Connect the speaker to Philips Play-fi enabled TV

- 1 Power up your DTS Play-fi TV connected to the internet.
 - ↳ TV sound is muted.
- 2 Enter the Settings menu on TV.
 - ↳ Setting > Sound > DTS Play-fi



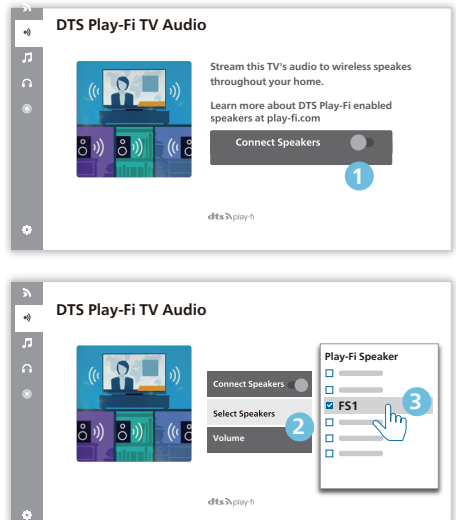
Surround sound Setup

Follow the on-screen setup.




TV Audio Setup

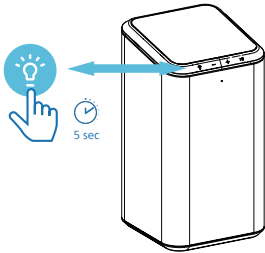
You can also stream the TV's audio to your home speakers wirelessly. Follow the on-screen setup.



5 Lighting operation

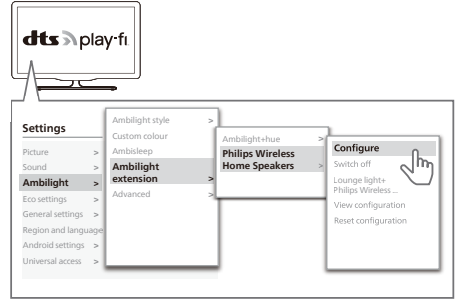
You can set the built-in LED light of the speaker to follow the color of your Philips Ambilight TV. Alternatively, you can set the light to show a preset color style or you can switch the light off.


Press the  button repeatedly on the speaker to switch the light mode:
1. Work with Ambilight / Follow music (when no Ambilight TV linked or TV is disconnected), 2. Mood light, 3. Off.



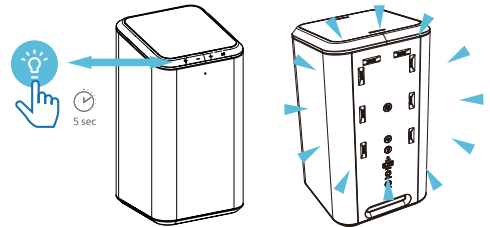
3 Activate the configuration as shown on the Ambilight TV:

Settings > Ambilight > Ambilight extension > Ambilight+Philips Wireless Home Speakers > Configure.



4 Follow the set up instruction on the TV. It will guide you to long press  button on the speaker to enter the pairing mode with Ambilight TV.

5 When the speaker opens for pairing, the LEDs blink in yellow.



6 When the speaker is paired with Ambilight TV, the LED light on speaker will followed the Ambilight TV.

Note

- The pairing will time out after 2 minutes.

Pairing with Ambilight TV


Set up your speakers to follow the colors of the Ambilight TV. The speaker will expand the Ambilight effect from TV screen.

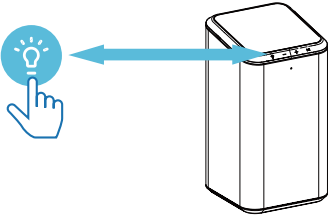
- 1 Before starting the setup, make sure the speaker and TV are connected to the same Wi-Fi network.
- 2 Turn on the Phillips Ambilight TV. The setup of Ambilight TV pairing is to be done on the TV.



Follow Music

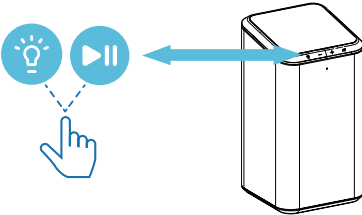
If there is no Ambilight TV linked or TV is disconnected, the LED light on speaker will automatically switch to Follow Music during music playback.

You can select one of the styles that follow the dynamics of the sound.

- 1 To set the LED light, press the  button on the speaker to Mode 1 "Work with Ambilight / Follow music" mode.




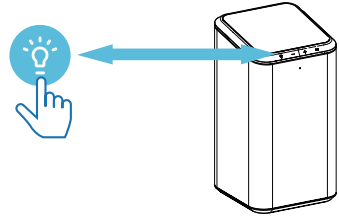
- 2 You can select one of the preset color styles. To set the color, press  and  to select the color style you want.





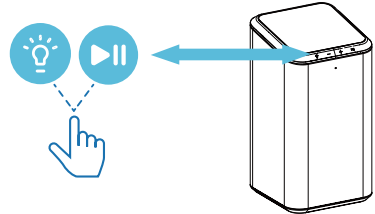
Mood Light mode

The mood light mode (Lounge mode) of your speaker allows you to switch on the LED light (static light) with or without audio playback. So you can light up your room with LED light.

- 1 To set the LED light, press the  button on the speaker to Mode 2 "Mood Light" mode.



- 2 You can select one of the preset color styles. To set the color, press  and  to select the color style you want.



The available mood light styles are:





- Warm white – Default static color
- Hot Lava - Red static color
- Deep Water - Blue static color
- Green Nature - Green static color
- Orange – Orange static color
- Lemon – Yellow static color
- Lavender – Light Purple static color

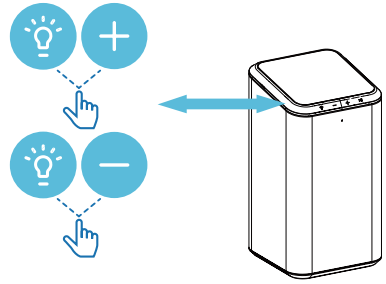
Note

- Keep the power supply connected in the mood light mode. The network or Bluetooth connection is not required in the mood light mode.


Adjust brightness

Set the level of LED light brightness.





- Press  and  once to increase the LED light brightness.
- Press  and  once to decrease the LED light brightness.



LED light Off

To switch off LED light, press the  button on the speaker to Mode 3 "Off".

Overview

	Mode	Ambilight TV	LED state	Action
1	Follow Ambilight TV	Paired	Follow the color of Ambilight TV	<ul style="list-style-type: none">• Press and hold for 3 seconds to enter the pairing mode.
	Follow music	Not paired	Vary with the rhythm of audio in music playback	<ul style="list-style-type: none">• Press  &  button to select the color.• Press  &  button to increase/decrease the brightness.
2	Mood Light (Lounge mode)		Static color	
3	Off		Off	

6 Play

Play from Bluetooth devices

With this speaker, you can enjoy audio from your Bluetooth device.

Note

- Make sure that the Bluetooth function is enabled on your device.
- The maximum distance for pairing the speaker and your Bluetooth device is 20 meters (66 feet).
- Keep away from any other electronic device that may cause interference.

- 1 Press and hold **⌘** button at the back cabinet for 8 seconds to enter the Bluetooth pairing mode.
- 2 On the Bluetooth device, turn on Bluetooth, search for and select **"Play-Fi Device (XXXXXX)-BT"** to start connection.
- 3 Select and play audio files or music on your Bluetooth device.

LED indicator	Description
Blinking blue slowly	<ul style="list-style-type: none">• Ready for pairing• Reconnecting the last connected device
Solid blue	Connected

Note

- To disconnect a device, press and hold **⌘** for 2 seconds until the LED indicator blinks blue quickly.
- When you turn on the speaker, it always automatically tries to reconnect the last successfully connected device.
- To clear the pairing information, press and hold **⌘** for 6 seconds until the LED indicator slowly blinks blue.

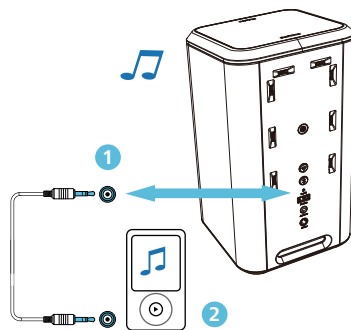
Control playback

When playing the music

⏸ Press to pause or resume play

⏪ / ⏩ Adjust the volume

Listen to an external device



Connect your MP3 player to play your audio files or music.

What you need

- An MP3 player.
- A 3.5mm stereo audio cable.

- 1 Using the 3.5mm stereo audio cable, connect the MP3 player to the **AUDIO IN** connector on this product.
- 2 Press the buttons on your MP3 player to select and play audio files or music.

Listen to Spotify

Use your phone, tablet or computer as a remote control for Spotify. Go to spotify.com/connect to learn how.

Upgrade Firmware

To get the best features and support, update your product with the latest firmware version.

Update firmware via Philips Sound app (Settings > Fine Tune / Update Firmware)

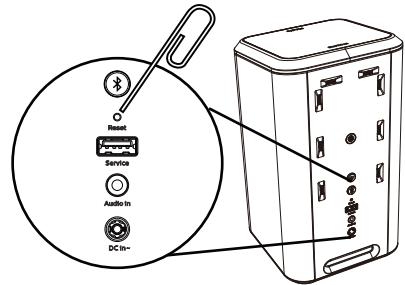
The firmware for MCU and DSP can be upgraded to the latest version via Philips Sound powered by DTS Play-fi. Please go to settings menu and select PS Fine Tune / Update Firmware option to check it out. If the upgrade is released, the upgraded icon can be pressed to proceed automatically.

Once this product is connected to Wi-Fi, it can receive over-the-air firmware update. Always upgrade with the latest firmware version to improve the performance of this product.

Factory reset

Reset device to default setting.

- 1 Connect the speaker to power, use a needle to push the **Reset** button on rear of speaker for 5 seconds.



- You will hear a tone and then the speaker will automatically restart.
- The speaker is restored to factory defaults.

7 Product specifications



Note

- Product information is subject to change without prior notice.

General information

Power supply	100-240V~, 50/60Hz
Power consumption	< 60W
Standby consumption	< 0.5W
Dimensions (W x H x D)	142 x 253 x 142mm
Weight (main unit)	2.328Kg
Operating temperature	0°C - 40°C

Amplifier

Output power	60W RMS 120W MAX
Frequency response	50-20000Hz
Signal to Noise Ratio	> 70db
Total harmonic distortion	1%

Speakers

Impedance	4ohm
Input power	30W (woofer) 20W (upfiring) 10W (tweeter)
Speaker driver	1 x 3.5" woofer 1 x 25MM tweeter 2 x passive radiators 1 x 2.5" upfiring Mid-Range

Bluetooth

Bluetooth version	v5.0, AAC, SBC
Frequency range	2404-2480MHz
Maximum transition power	4dBm
Compatible Bluetooth profiles	A2DP
Bluetooth range	approx.20m

Network supported

Wireless network	802.11 a/b/g/n/ac
2.4G Wi-Fi transmitter frequency range	2412-2462MHz
2.4G Wi-Fi transmitter power	13±2dBm
5G Wi-Fi transmitter frequency range	5150-5850MHz
5G Wi-Fi transmitter power	11±2dBm

8 Troubleshooting



Warning

- Risk of electric shock. Never remove the casing of the product.

To keep the warranty valid, never try to repair the product yourself.

If you have problems using this product, check the following points before you request service. If you still have a problem, get support at www.philips.com/support.

General

No power

- Ensure that there is power at the DC outlet.
- Make sure the DC IN socket of the speaker is properly connected.
- As a power-saving feature, the speaker turns off automatically 15 minutes after no audio signal is received or no audio device is connected.

No sound

- Adjust the volume on this speaker.
- Adjust the volume on the connected device.
- In **AUDIO IN** mode, make sure that music playback through Bluetooth is stopped.
- Make sure that your Bluetooth device is within the operational range.

No response from the speaker

- Restart the speaker.

Bluetooth

Quality of audio play from a connected Bluetooth device is poor.

- The Bluetooth reception is poor. Move the device closer to the speaker, or remove any obstacle between the device and the speaker.

I can't find the Bluetooth name of this unit on my Bluetooth device

- Ensure the Bluetooth function is activated on your Bluetooth device.
- Re-pair the unit with your Bluetooth device.

Cannot connect with my Bluetooth device

- The Bluetooth function of your device is not enabled. Refer to the user manual of your device to find out how to enable the function.
- This speaker is not in pairing mode.
- This speaker is already connected to another Bluetooth-enabled device. Disconnect and try again.

Wi-Fi

Wi-Fi connection cannot be established

- Check the availability of WLAN network on the router.
- Place the Wi-Fi router closer to the unit.
- Make sure the password is correct.
- Check the WLAN function or reboot the modem and Wi-Fi router.

Play-Fi

Cannot discover the Play-Fi supported devices from the app.

- Make sure the device is connected to the Wi-Fi.

Cannot play Play-Fi music

- Certain network service or contents available through the device may not be accessible in case the service provider terminates its service.
- When the first time setup is not successful, close the Philips Sound app powered by DTS Play-Fi. Restart the app.
- When the speaker was set as Stereo Pairs or Surround sound, the speaker need to be disconnected in the App before use separately.

9 Notice

Any changes or modifications made to this device that are not expressly approved by MMD Hong Kong Holding Limited may void the user's authority to operate the product.

Compliance



Hereby, TP Vision Europe BV declares that this product is in compliance with the essential requirements and other relevant provisions of Directive 2014/53/EU. You can find the Declaration of Conformity on www.philips.com/support.

Care of the environment

Disposal of your old product



Your product is designed and manufactured with high quality materials and components, which can be recycled and reused.



This symbol on a product means that the product is covered by European Directive 2012/19/EU.



This symbol means that the product contains batteries covered by European Directive 2013/56/EU which cannot be disposed of with normal household waste. Inform yourself about the local separate.

collection system for electrical and electronic products and batteries. Follow local rules and never dispose of the product and batteries with normal household waste. Correct disposal of old products and batteries helps prevent negative consequences for the environment and human health.

Environmental information

All unnecessary packaging has been omitted. We have tried to make the packaging easy to separate into three materials: cardboard (box), polystyrene foam (buffer) and polyethylene (bags, protective foam sheet) Your system consists of materials which can be recycled and reused if disassembled by a specialized company. Please observe the local regulations regarding the disposal of packaging materials, exhausted batteries and old equipment.

FCC Statement (USA and Canada only)

This device complies with Part 15 of the FCC Rules. Operation is subject to the following two conditions: (1) This device may not cause harmful interference, and (2) This device must accept any interference received, including interference that may cause undesired operation.



Warning

- Changes or modifications not expressly approved by the party responsible for compliance could void the user's authority to operate the equipment.



Note

- This equipment has been tested and found to comply with the limits for a Class B digital device, pursuant to Part 15 of the FCC Rules.

These limits are designed to provide reasonable protection against harmful interference in a residential installation.

This equipment generates, uses and can radiate radio frequency energy, if not installed and used in accordance with the instructions, may cause harmful interference to radio communications. However, there is no guarantee that interference will not occur in a particular installation. If this equipment does cause harmful interference to radio or television reception, which can be determined by turning the equipment off and on, the user is encouraged to try to correct the interference by one or more of the following measures: (1) Reorient or relocate the receiving antenna. (2) Increase the separation between the equipment and receiver. (3) Connect the equipment into an outlet on a circuit different from that to which the receiver is connected. (4) Consult the dealer or an experienced radio/TV technician for help.

RF Warning Statement

The device has been evaluated to meet general RF exposure requirements. The device can be used in portable exposure conditions without restriction.

IC-Canada :CAN IECES-003(B)/NMB-003(B)

This device contains licence-exempt transmitter(s)/receiver(s) that comply with Innovation, Science and Economic Development Canada's licence-exempt RSS(s). Operation is subject to the following two conditions

- 1 This device may not cause interference.
- 2 This device must accept any interference, including interference that may cause undesired operation of the device.

Trademark notice



Google, Google Play and Chromecast built-in are trademark of Google LLC. Google Assistant is not available in certain languages and countries.



For DTS patents, see <http://patents.dts.com>.
Manufactured under license from DTS, Inc. (for companies headquartered in the U.S./Japan/Taiwan) or under license from DTS Licensing Limited (for all other companies). DTS, Play-Fi, and the DTS Play-Fi logo are registered trademarks or trademarks of DTS, Inc. in the United States and other countries.
© 2021 DTS, Inc. ALL RIGHTS RESERVED.



The Wi-Fi CERTIFIED™ Logo is a registered trademark of Wi-Fi Alliance®.



To control this AirPlay 2-enabled speaker, iOS 11.4 or later is required. Use of the Works with Apple badge means that an accessory has been designed to work specifically with the technology identified in the badge and has been certified by the developer to meet Apple performance standards.
Apple® and AirPlay® are trademarks of Apple Inc., registered in the U.S. and other countries.



The Spotify Software is subject to third party licenses found here: www.spotify.com/connect/third-party-licenses.



The Bluetooth® word mark and logos are registered trademarks owned by Bluetooth SIG, Inc. and any use of such marks by MMD Hong Kong Holding Limited is under license. Other trademarks and trade names are those of their respective owners.



Specifications are subject to change without notice. Please visit www.Philips.com/support for the latest updates and documents. Philips and the Philips Shield Emblem are registered trademarks of Koninklijke Philips N.V. and are used under license.

This product has been manufactured by and is sold under the responsibility of MMD Hong Kong Holding Limited. or one of its affiliates, and MMD Hong Kong Holding Limited. is the warrantor in relation to this product.

