

# Latitude 7320 Detachable

## Setup and Specifications

## Notes, cautions, and warnings

 **NOTE:** A NOTE indicates important information that helps you make better use of your product.

 **CAUTION:** A CAUTION indicates either potential damage to hardware or loss of data and tells you how to avoid the problem.

 **WARNING:** A WARNING indicates a potential for property damage, personal injury, or death.

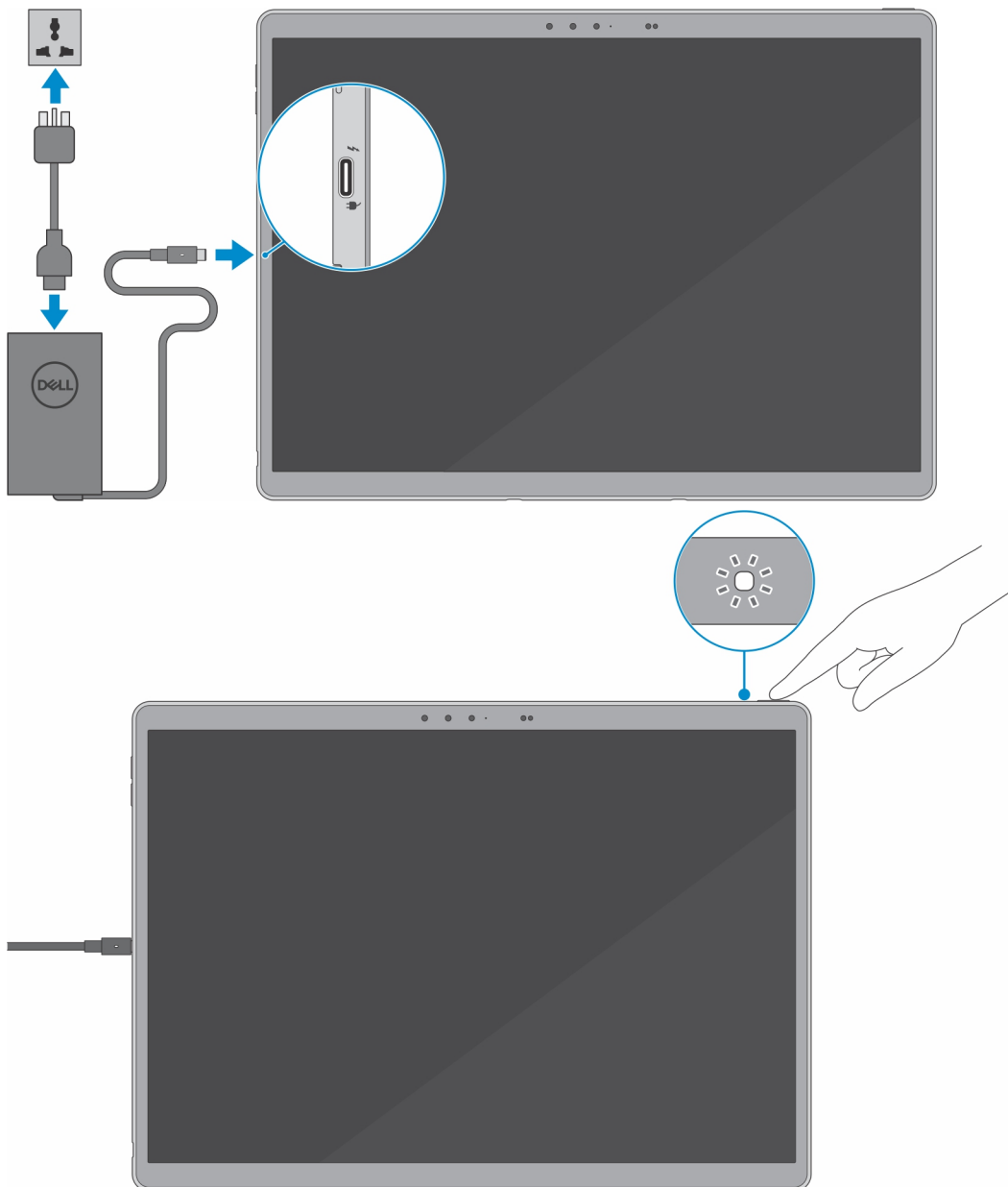
# Contents

<b>Chapter 1: Set up your Latitude 7320 Detachable.....</b>	<b>4</b>
<b>Chapter 2: Views of Latitude 7320 Detachable.....</b>	<b>7</b>
Right.....	7
Left.....	7
Display.....	8
Back.....	9
Top.....	9
Bottom.....	10
<b>Chapter 3: Keyboard shortcuts.....</b>	<b>11</b>
Battery Charge and Status LED .....	12
<b>Chapter 4: Specifications of Latitude 7320 Detachable.....</b>	<b>13</b>
Dimensions and weight.....	13
Processor.....	14
Chipset.....	14
Operating system.....	14
Memory.....	15
External ports.....	15
Wireless module.....	15
WWAN module.....	16
Audio.....	16
Storage.....	17
Keyboard.....	17
Camera.....	18
Power adapter.....	18
Battery.....	19
Display.....	20
Fingerprint reader.....	21
GPU—Integrated.....	21
Computer environment.....	21
Sensor .....	22
Sensor and control specifications .....	22
<b>Chapter 5: Dell low blue light display.....</b>	<b>23</b>
<b>Chapter 6: Getting help and contacting Dell.....</b>	<b>24</b>

# Set up your Latitude 7320 Detachable

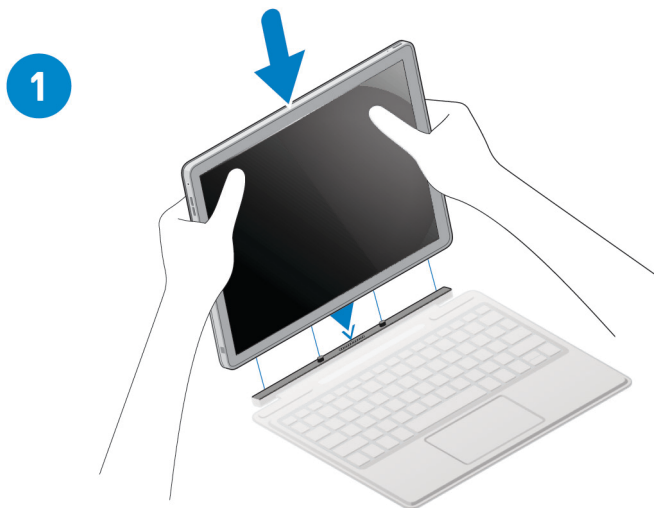
**NOTE:** The images in this document may differ from your computer depending on the configuration you ordered.

1. Connect the power adapter and press the power button.

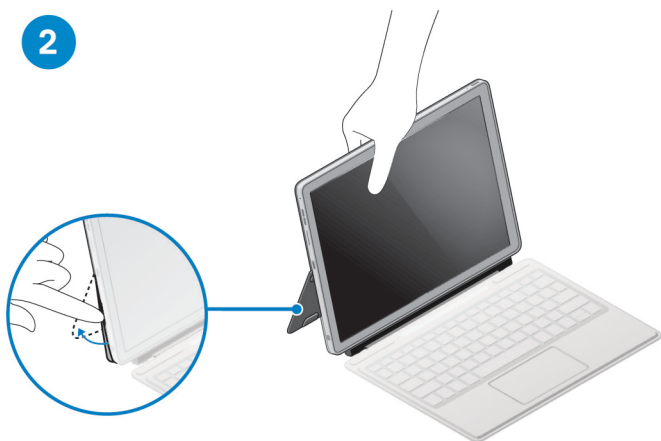


**NOTE:** The battery may go into power-saving mode during shipment to conserve charge on the battery. Ensure that the power adapter is connected to your computer when it is turned on for the first time.

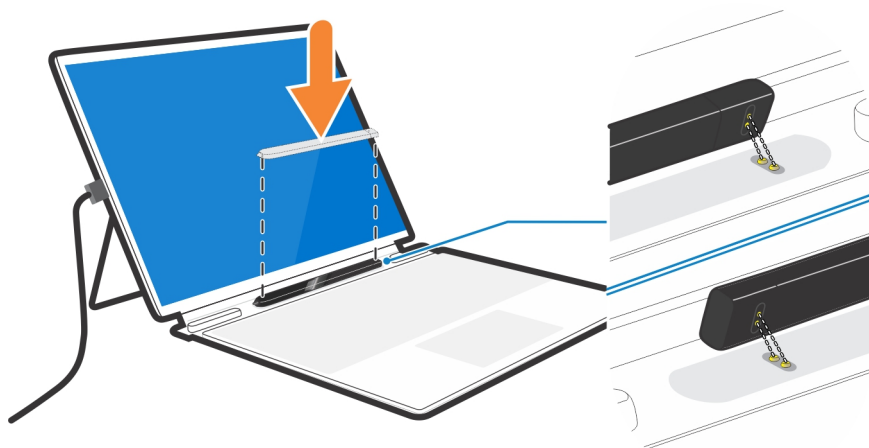
2. Connect the Latitude 7320 Detachable keyboard and deploy the kick stand.
  - a. Align the docking connectors on the Latitude 7320 Detachable, with the connectors on the Latitude 7320 Detachable keyboard.



- b. Dock the Latitude 7320 Detachable to the Latitude 7320 Detachable keyboard.
- Using your finger tips, deploy the kick stand from the recess on the computer.



3. Align the Latitude 7320 Detachable Active pen charging pins with the charging pins on the Latitude 7320 Detachable keyboard and dock it in the cradle.




**i** **NOTE:** The charging time for the Latitude 7320 Detachable Active pen is 30 seconds.

4. Finish Windows setup.

Follow the on-screen instructions to complete the setup. When setting up, Dell recommends that you:





- Connect to a network for Windows updates.

 **NOTE:** If connecting to a secured wireless network, enter the password for the wireless network access when prompted.

- If connected to the Internet, sign in with or create a Microsoft account. If not connected to the Internet, create an offline account.
- On the **Support and Protection** screen, enter your contact details.

5. Locate and use Dell apps from the Windows Start menu—Recommended.

**Table 1. Locate Dell apps**

Resources	Description
	<p><b>SupportAssist</b></p> <p>Proactively checks the health of your computer's hardware and software. The SupportAssist OS Recovery tool troubleshoots issues with the operating system. For more information, see the SupportAssist documentation at <a href="http://www.dell.com/support">www.dell.com/support</a>.</p> <p> <b>NOTE:</b> In SupportAssist, click the warranty expiry date to renew or upgrade your warranty.</p>
	<p><b>Dell Update</b></p> <p>Updates your computer with critical fixes and latest device drivers as they become available. For more information about using Dell Update, see the knowledge base article <a href="https://www.dell.com/support/entries/entry/SLN305843">SLN305843</a> at <a href="http://www.dell.com/support">www.dell.com/support</a>.</p>
	<p><b>Dell Digital Delivery</b></p> <p>Download software applications, which are purchased but not pre-installed on your computer. For more information about using Dell Digital Delivery, see the knowledge base article <a href="https://www.dell.com/support/entries/entry/153764">153764</a> at <a href="http://www.dell.com/support">www.dell.com/support</a>.</p>

# Views of Latitude 7320 Detachable

## Topics:

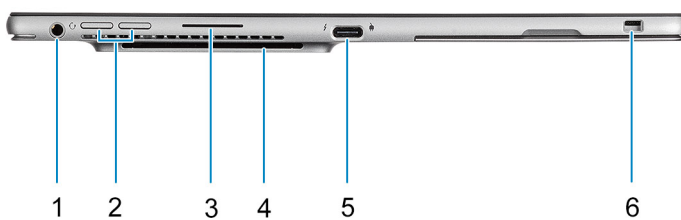
- Right
- Left
- Display
- Back
- Top
- Bottom

## Right



1. USB4 Type-C ports with Thunderbolt4/PowerDelivery/DisplayPort
2. Speaker
3. Nano SIM card slot

## Left



- 1. Combo Mic/Headphone Jack
- 2. Volume up/down button
- 3. Speaker
- 4. Contactless/Contacted smart card reader (optional)
- 5. USB4 Type-C ports with Thunderbolt4/Power Delivery/Display Port
- 6. Wedge-shaped lock slot

## Display



- 1. Ambient light sensor
- 2. IR emitters
- 3. IR/RGB camera
- 4. Front/rear camera status LED
- 5. Proximity sensor
- 6. LCD panel

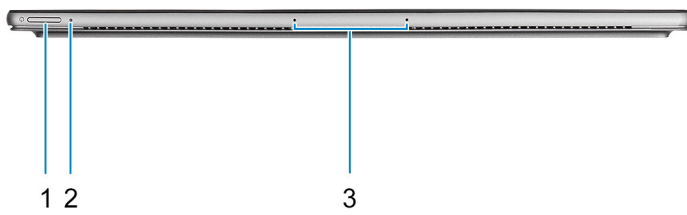


## Back



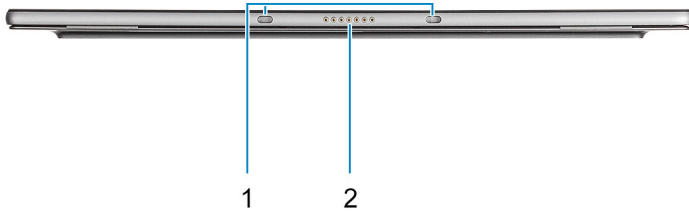
- 1. Fingerprint reader
- 2. NFC reader
- 3. Rear RGB camera
- 4. Kickstand

## Top



- 1. Power button
- 2. Battery status/Diagnostics LED
- 3. Microphone

## Bottom



1. Keyboard docking magnets
2. Pogo connector

## Keyboard shortcuts

**NOTE:** Keyboard characters may differ depending on the keyboard language configuration. Keys used for shortcuts remain the same across all language configurations.

Some keys on your keyboard have two symbols on them. These keys can be used to type alternate characters or to perform secondary functions. The symbol shown on the lower part of the key refers to the character that is typed out when the key is pressed. If you press shift and the key, the symbol shown on the upper part of the key is typed out. For example, if you press **2**, **2** is typed out; if you press **Shift + 2**, **@** is typed out.

The keys F1-F12 at the top row of the keyboard are function keys for multi-media control, as indicated by the icon at the bottom of the key. Press the function key to invoke the task represented by the icon. For example, pressing F1 mutes the audio (refer to the table below).

However, if the function keys F1-F12 are needed for specific software applications, multi-media functionality can be disabled by pressing **Fn + Esc**. Subsequently, multi-media control can be invoked by pressing **Fn** and the respective function key. For example, mute audio by pressing **Fn + F1**.

**NOTE:** You can also define the primary behavior of the function keys (F1–F12) by changing **Function Key Behavior** in BIOS setup program.

**Table 2. List of keyboard shortcuts**

Function key	Primary behavior	Function key	Secondary behavior
F1	Mute audio	Fn + F1	Operating system and application specific F1 behavior
F2	Decrease volume	Fn + F2	Operating system and application specific F2 behavior
F3	Increase volume	Fn + F3	Operating system and application specific F3 behavior
F4	Mic Mute	Fn + F4	Operating system and application specific F4 behavior
F5	Keyboard backlight <b>NOTE:</b> Not applicable for non-backlight keyboard.	Fn + F5	Operating system and application specific F5 behavior
F6	Decrease screen brightness	Fn + F6	Operating system and application specific F6 behavior
F7	Increase screen brightness		Operating system and application specific F7 behavior
F8	Switch to external display	Fn + F8	Operating system and application specific F8 behavior
F9	Disable camera	Fn + F9	Operating system and application specific F9 behavior

**Table 2. List of keyboard shortcuts (continued)**

Function key	Primary behavior	Function key	Secondary behavior
F10	Print Screen	Fn + F10	Operating system and application specific F10 behavior
F11	Home	Fn + F11	Operating system and application specific F11 behavior
F12	End	Fn + F12	Operating system and application specific F12 behavior

The **Fn** key is also used with selected keys on the keyboard to invoke other secondary functions.

**Table 3. Secondary behavior**

Function key	Behavior
Fn + Esc	Toggle Fn-key lock
Fn + PrtScr	Turn off/on wireless
Fn + B	Pause/Break
Fn + Insert	Sleep
Fn + S	Toggle scroll lock
Fn + H	Toggle between power and battery-status light/hard-drive activity light
Fn + R	System request
Fn + Ctrl	Open application menu
Fn + PgUp	Page up
Fn + PgDn	Page down
Fn + Home	Home
Fn + End	End

**Topics:**

- [Battery Charge and Status LED](#)

## Battery Charge and Status LED

**Table 4. Battery Charge and Status LED Indicator**

Power Source	LED Behavior	System Power State	Battery Charge Level
AC Adapter	Off	S0 - S5	Fully Charged
AC Adapter	Solid White	S0 - S5	< Fully Charged
Battery	Off	S0 - S5	11-100%
Battery	Solid Amber (590+/-3 nm)	S0 - S5	< 10%

- S0 (ON) - System is turned on.
- S4 (Hibernate) - The system consumes the least power compared to all other sleep states. The system is almost at an OFF state, expect for a trickle power. The context data is written to hard drive.
- S5 (OFF) - The system is in a shutdown state.

# Specifications of Latitude 7320 Detachable


## Topics:

- Dimensions and weight
- Processor
- Chipset
- Operating system
- Memory
- External ports
- Wireless module
- WWAN module
- Audio
- Storage
- Keyboard
- Camera
- Power adapter
- Battery
- Display
- Fingerprint reader
- GPU—Integrated
- Computer environment
- Sensor
- Sensor and control specifications

## Dimensions and weight

The following table lists the height, width, depth, and weight of your Latitude 7320 Detachable.

**Table 5. Dimensions and weight**

Description	Values
Height:	
Front height	8.44 mm (0.33 in.)
Rear height	8.44 mm (0.33 in.)
Width	288.42 mm (11.35 in.)
Depth	207.90 mm (8.18 in.)
Weight (minimum)	0.789 kg (1.7 lb)
	 <b>NOTE:</b> The weight of your computer depends on the configuration ordered and manufacturing variability.

# Processor

The following table lists the details of the processors supported by your Latitude 7320 Detachable.

**Table 6. Processor**

Description	Option one	Option two	Option three
Processor type	11 <sup>th</sup> Generation Intel Core i5-1130G7	11 <sup>th</sup> Generation Intel Core i5-1140G7 vPro	11 <sup>th</sup> Generation Intel Core i7-1180G7 vPro
Processor wattage	12 W	12 W	12 W
Processor core count	4	4	4
Processor thread count	8	8	8
Processor speed	1.80 GHz up to 4.00 GHz	1.80 GHz up to 4.20 GHz	2.20 GHz to 4.60 GHz
Processor cache	8 MB	8 MB	12 MB
Integrated graphics	Intel Iris X <sup>e</sup> Graphics	Intel Iris X <sup>e</sup> Graphics	Intel Iris X <sup>e</sup> Graphics

# Chipset

The following table lists the details of the chipset supported by your Latitude 7320 Detachable.

**Table 7. Chipset**

Description	Values
Chipset	Intel
Processor	11 <sup>th</sup> Generation Intel Core i5/i7
DRAM bus width	64-bit
Flash EPROM	NA
PCIe bus	Up to Gen4

# Operating system

Your Latitude 7320 Detachable supports the following operating systems:

- Windows 11 Home, 64-bit
- Windows 11 Pro, 64-bit
- Windows 11 Pro National Academic, 64-bit
- Windows 10 Home, 64-bit
- Windows 10 Pro, 64-bit

# Memory

The following table lists the memory specifications of your Latitude 7320 Detachable.

**Table 8. Memory specifications**

Description	Values
Memory slots	onboard
Memory type	LPDDR4x
Memory speed	4267 MT/s
Maximum memory configuration	16 GB
Minimum memory configuration	4 GB
Memory size per slot	4 GB, 8 GB, 16 GB
Memory configurations supported	<ul style="list-style-type: none"><li>• 4 GB</li><li>• 8 GB</li><li>• 16 GB</li></ul>

# External ports

The following table lists the external ports of your Latitude 7320 Detachable.

**Table 9. External ports**

Description	Values
Network port	NA
USB ports	<ul style="list-style-type: none"><li>• 2 USB4 Type-C ports with Thunderbolt4/Power Delivery/Display Port</li></ul>
Audio port	1 Combo Mic/Headphone Jack
Video port	DisplayPort through USB4 Type-C port
SIM-card slot	One nanoSIM-card slot
Power-adaptor port	USB4 Type-C
Security	<ul style="list-style-type: none"><li>• One wedge-shaped lock slot</li><li>• Smart card reader</li><li>• NFC</li></ul>


# Wireless module

The following table lists the Wireless Local Area Network (WLAN) module supported on your Latitude 7320 Detachable.

**Table 10. Wireless module specifications**


Description	Values
Model number	Intel Dual Band Wireless-AX201D2W

**Table 10. Wireless module specifications (continued)**

Description	Values
	 <b>NOTE:</b> The WLAN card is integrated into the system board.
Transfer rate	2400 Mbps
Frequency bands supported	2.4/ 5 GHz
Wireless standards	<ul style="list-style-type: none"> <li>● Wi-Fi 802.11a/b/g</li> <li>● Wi-Fi 4 (Wi-Fi 802.11n)</li> <li>● Wi-Fi 5 (Wi-Fi 802.11ac)</li> <li>● Wi-Fi 6 (Wi-Fi 802.11ax)</li> </ul>
Encryption	<ul style="list-style-type: none"> <li>● 64-bit/128-bit WEP</li> <li>● AES-CCMP</li> <li>● TKIP</li> </ul>
Bluetooth	Bluetooth 5.1

## WWAN module

**Table 11. WWAN module specifications**

Description	Values
Model number	Qualcomm® Snapdragon™ X20 Global Gigabit LTE, CAT16
Transfer rate	Up to 867 Mbps DL/50 Mbps UL (Cat 16)
Frequency bands supported	(1/2/3/4/5/7/8/12/13/14/17/18/19/20/25/26/28/29/30/32/38/39/40/41/42/43/46/48/66 ), HSPA+ (1/2/4/5/6/8/9/19 )
Wireless standards	Not Applicable
Encryption	Not Applicable
Bluetooth	Not Applicable
 <b>NOTE:</b> For instructions on how to find your computer's IMEI (International Mobile Station Equipment Identity) number, see the knowledge base article <a href="https://www.dell.com/support">000143678</a> at <a href="https://www.dell.com/support">www.dell.com/support</a> .	

## Audio

The following table lists the audio specifications of your Latitude 7320 Detachable.

**Table 12. Audio specifications**

Description	Values
Audio controller	Realtek ALC711
Stereo conversion	Supported
Internal audio interface	Intel Soundwire



**Table 12. Audio specifications (continued)**

Description		Values
External audio interface		Universal Audio Jack
Number of speakers		2 Stereo speakers
Internal-speaker amplifier		2 W average per channel
External volume controls		through dedicated volume button
Speaker output:		
	Average speaker output	2 W per channel
	Peak speaker output	2.5 W per channel
Subwoofer output		Not supported
Microphone		2 Omni-directional Noise Canceling Microphones

## Storage

This section lists the storage options on your Latitude 7320 Detachable.

Your computer supports one of the following configurations:

- One M.2 2230 solid-state drive
- One M.2 2230 PCIe/NVMe Class 35 SED

**Table 13. Storage specifications**

Storage type	Interface type	Capacity
M.2 2230, Class 35 SSD	Gen 3 PCIe x4 NVMe	Up to 1 TB
M.2 2230, Class 35 SED SSD	Gen 3 PCIe x4 NVMe	256 GB

## Keyboard

The following table lists the keyboard specifications of your Latitude 7320 Detachable.

**Table 14. Keyboard specifications**

Description	Values
Keyboard type	<ul style="list-style-type: none"> <li>• Dell Latitude 7320 Detachable Travel keyboard</li> </ul>
Keyboard layout	QWERTY
Number of keys	<ul style="list-style-type: none"> <li>• United States and Canada: 80 keys</li> <li>• United Kingdom: 81 keys</li> <li>• Japan: 84 keys</li> </ul>
Keyboard size	X=288.42 mm (11.36 inches) Y=228.14 mm (8.98 inches)
Keyboard shortcuts	Some keys on your keyboard have two symbols on them. These keys can be used to type alternate characters or to

**Table 14. Keyboard specifications (continued)**

Description	Values
	perform secondary functions. To type the alternate character, press Shift and the desired key. To perform secondary functions, press Fn and the desired key. <b>i</b> <b>NOTE:</b> You can define the primary behavior of the function keys (F1–F12) changing <b>Function Key Behavior</b> in BIOS setup program.

## Camera

The following table lists the camera specifications of your Latitude 7320 Detachable.

**Table 15. Camera specifications**

Description	Values
Number of cameras	Two
Camera type	8 MP RGB Camera
Camera location	World Facing Camera
Camera sensor type	<ul style="list-style-type: none"> <li>• CMOS sensor technology</li> <li>• Proximity sensor</li> </ul>
Camera resolution:	
Still image	8.03 megapixel
Video	1920 x 1080 at 30 fps
Infrared camera resolution:	
Still image	8.03 megapixel
Video	1920 x 1080 at 30 fps
Diagonal viewing angle:	
Camera	88.9 degrees
Infrared camera	86.7 degrees

## Power adapter

The following table lists the power adapter specifications of your Latitude 7320 Detachable.

**Table 16. Power adapter specifications**

Description	Option one	Option two	Option three
Type	65 W, USB Type-C	45 W, USB Type-C SFF	60 W, USB Type-C Ultra SFF
Input voltage	100 VAC–240 VAC	100 VAC–240 VAC	100 VAC–240 VAC
Input frequency	50 Hz–60 Hz	50 Hz–60 Hz	50 Hz–60 Hz

**Table 16. Power adapter specifications (continued)**

Description	Option one	Option two	Option three
Input current (maximum)	1.70 A	1.30 A	1.60 A
Output current (continuous)	<ul style="list-style-type: none"> <li>20 V/3.25 A (Continuous)</li> <li>15 V/3 A (Continuous)</li> <li>9.0 V/3 A (Continuous)</li> <li>5.0 V/3 A (Continuous)</li> </ul>	<ul style="list-style-type: none"> <li>20 V/2.25 A (Continuous)</li> <li>15 V/3 A (Continuous)</li> <li>9.0 V/3 A (Continuous)</li> <li>5.0 V/3 A (Continuous)</li> </ul>	<ul style="list-style-type: none"> <li>20 V/3 A (Continuous)</li> <li>15 V/3 A (Continuous)</li> <li>9.0 V/3 A (Continuous)</li> <li>5.0 V/3 A (Continuous)</li> </ul>
Rated output voltage	<ul style="list-style-type: none"> <li>20 VDC</li> <li>15 VDC</li> <li>9 VDC</li> <li>5 VDC</li> </ul>	<ul style="list-style-type: none"> <li>20 VDC</li> <li>15 VDC</li> <li>9 VDC</li> <li>5 VDC</li> </ul>	<ul style="list-style-type: none"> <li>20 VDC</li> <li>15 VDC</li> <li>9 VDC</li> <li>5 VDC</li> </ul>
Temperature range:			
Operating	0°C to 40°C (32°F to 104°F)	0°C to 40°C (32°F to 104°F)	0°C to 40°C (32°F to 104°F)
Storage	-40°C to 70°C (-40°F to 158°F)	-40°C to 70°C (-40°F to 158°F)	-40°C to 70°C (-40°F to 158°F)


## Battery

The following table lists the battery specifications of your Latitude 7320 Detachable.

**Table 17. Battery specifications**

Description	Option one	Option two	
Battery type	2-Cell, 40 WHr, Polymer	2-Cell, 40 WHr, Long Cycle Life, Polymer (optional)	
Battery voltage	8.90 VDC	8.90 VDC	
Battery weight (maximum)	0.16 kg (0.35 lb)	0.16 kg (0.35 lb)	
Battery dimensions:			
	Height	4.80 mm (0.188 in.)	4.80 mm (0.19 in.)
	Width	81.20 mm (3.19 in.)	81.20 mm (3.19 in.)
	Depth	185 mm (7.28 in.)	185 mm (7.28 in.)
Temperature range:			
	Operating	0°C to 45°C (32°F to 113°F)	0°C to 45°C (32°F to 113 °F)
	Storage	-20°C to 65°C (-4°F to 149°F)	-20°C to 65°C (-4°F to 149 °F)
Battery operating time	Varies depending on operating conditions and can significantly reduce under certain power-intensive conditions.	Varies depending on operating conditions and can significantly reduce under certain power-intensive conditions.	
Battery charging time (approximate) <i>i</i> <b>NOTE:</b> Control the charging time, duration, start and end time, and so on using the Dell Power Manager	4 hours (when the computer is off) <i>i</i> <b>NOTE:</b> Control the charging time, duration, start and end time, and so on using the Dell Power	4 hours (when the computer is off) <i>i</i> <b>NOTE:</b> Control the charging time, duration, start and end time, and so on using the Dell Power Manager	

**Table 17. Battery specifications (continued)**

Description	Option one	Option two
application. For more information on the Dell Power Manager see, <i>Me and My Dell</i> on <a href="http://www.dell.com">www.dell.com</a> .	Manager application. For more information on the Dell Power Manager see, <i>Me and My Dell</i> on <a href="http://www.dell.com/">www.dell.com/</a>	application. For more information on the Dell Power Manager see, <i>Me and My Dell</i> on <a href="http://www.dell.com/">www.dell.com/</a>
Coin-cell battery	Not supported	Not supported
 <b>CAUTION: Operating and storage temperature ranges may differ among components, so operating or storing the device outside these ranges may impact the performance of specific components.</b>		

## Display

The following table lists the display specifications of your Latitude 7320 Detachable.

**Table 18. Display specifications**

Description	Values	
Display type	Full High Definition (FHD+)	
Touch options	Yes	
Display-panel technology	Wide Viewing Angle (WVA)	
Display-panel dimensions (active area):		
	Height	182.98 mm (7.20 in.)
	Width	274.46 mm (10.80 in.)
	Diagonal	329.86 mm (12.98 in.)
Display-panel native resolution	1920 x 1280	
Luminance (typical)	500 nits	
Megapixels	2.45	
Color gamut	100% (sRGB)	
Pixels Per Inch (PPI)	177	
Contrast ratio (min)	1200:1	
Response time (max)	35 ms	
Refresh rate	60 Hz	
Horizontal view angle	80 +/- degrees	
Vertical view angle	80 +/- degrees	
Pixel pitch	0.1429 x 0.1429	
Power consumption (maximum)	2.63 W	

**Table 18. Display specifications (continued)**

Description	Values
Anti-glare vs glossy finish	Anti-Reflection /Anti-Smudge coating / DXC (Durable AR Coating)

## Fingerprint reader

The following table lists the fingerprint-reader specifications of your Latitude 7320 Detachable.

**Table 19. Fingerprint reader specifications**

Description	Values
Fingerprint-reader sensor technology	Capacitive
Fingerprint-reader sensor resolution	363 dpi
Fingerprint-reader sensor pixel size	104 x 86

## GPU—Integrated

The following table lists the specifications of the integrated Graphics Processing Unit (GPU) supported by your Latitude 7320 Detachable.

**Table 20. GPU—Integrated**

Controller	External display support	Memory size	Processor
Intel UHD Graphics	DisplayPort through USB 3.2 Gen1 Type-C port	Shared system memory	11th Generation Intel Core i5/i7
Intel Iris X <sup>e</sup> Graphics	DisplayPort through USB 3.2 Gen1 Type-C port	Shared system memory	11th Generation Intel Core i5/i7

## Computer environment

**Airborne contaminant level:** G1 as defined by ISA-S71.04-1985

**Table 21. Computer environment**

Description	Operating	Storage
Temperature range	0°C to 35°C (32°F to 95°F)	-40°C to 65°C (-40°F to 149°F)
Relative humidity (maximum)	10% to 90% (non-condensing)	0% to 95% (non-condensing)
Vibration (maximum)*	0.66 GRMS	1.30 GRMS
Shock (maximum)	110 G†	160 G†
Altitude (maximum)	-15.2 m to 3048 m (4.64 ft to 5518.4 ft)	-15.2 m to 10668 m (4.64 ft to 19234.4 ft)

\* Measured using a random vibration spectrum that simulates user environment.

† Measured using a 2 ms half-sine pulse when the hard drive is in use.

# Sensor

The following table lists the sensor of your Latitude 7320 Detachable.


**Table 22. Sensor**

<b>Sensor support</b>
Gyroscope
eCompass/Magnetometer
Accelerometer
GPS (via WWAN Card only)
Ambient Light Sensor
Adaptive Thermal Performance (via Gyroscope/Accelerometer)
Dell ExpressSign-In 1.0 (via Proximity Sensor)
Dell ExpressSign-in 2.0 (via Intel Camera Sensing Technology)
Wake/Power on with lid open

## Sensor and control specifications

Hall Effect sensor is located on System board

## Dell low blue light display

 **WARNING: Prolonged exposure to blue light from the display may lead to long-term effects such as eye strain, eye fatigue, or damage to the eyes.**

Blue light is a color in the light spectrum which has a short wavelength and high energy. Chronic exposure to blue light, particularly from digital sources, may disrupt sleep patterns and cause long-term effects such as eye strain, eye fatigue, or damage to the eyes.

The display on this computer is designed to minimize blue light and complies with TÜV Rheinland's requirement for low blue light displays.

Low blue light mode is enabled at the factory, so no further configuration is necessary.

To reduce the risk of eye strain, it is also recommended that you:


- Position the display at a comfortable viewing distance between 20 and 28 inches (50 and 70 cm) from your eyes.
- Blink frequently to moisten your eyes, wet your eyes with water, or apply suitable eye drops.
- Look away from your display, and gaze at a distant object at 20 ft (609.60 cm) away for at least 20 seconds during each break.
- Take an extended break for 20 minutes every two hours.

# Getting help and contacting Dell

## Self-help resources


You can get information and help on Dell products and services using these self-help resources:


**Table 23. Self-help resources**

Self-help resources	Resource location
Information about Dell products and services	<a href="http://www.dell.com">www.dell.com</a>
Tips	
Contact Support	In Windows search, type <code>Contact Support</code> , and press Enter.
Online help for operating system	<a href="http://www.dell.com/support/windows">www.dell.com/support/windows</a> <a href="http://www.dell.com/support/linux">www.dell.com/support/linux</a>
Troubleshooting information, user manuals, setup instructions, product specifications, technical help blogs, drivers, software updates, and so on.	<a href="http://www.dell.com/support">www.dell.com/support</a>
Dell knowledge base articles for a variety of computer concerns.	<ol style="list-style-type: none"> <li>1. Go to <a href="https://www.dell.com/support/home/?app=knowledgebase">https://www.dell.com/support/home/?app=knowledgebase</a>.</li> <li>2. Type the subject or keyword in the <b>Search</b> box.</li> <li>3. Click <b>Search</b> to retrieve the related articles.</li> </ol>

## Contacting Dell

To contact Dell for sales, technical support, or customer service issues, see [www.dell.com/contactdell](http://www.dell.com/contactdell).

 **NOTE:** Availability varies by country and product, and some services may not be available in your country.

 **NOTE:** If you do not have an active internet connection, you can find contact information on your purchase invoice, packing slip, bill, or Dell product catalog.