

# INSTALLATION INSTRUCTIONS MH-ARM-XXXX

## Forklift Keyboard Pillar Mount

### TOOLS REQUIRED:

Standard socket set

Standard wrench set

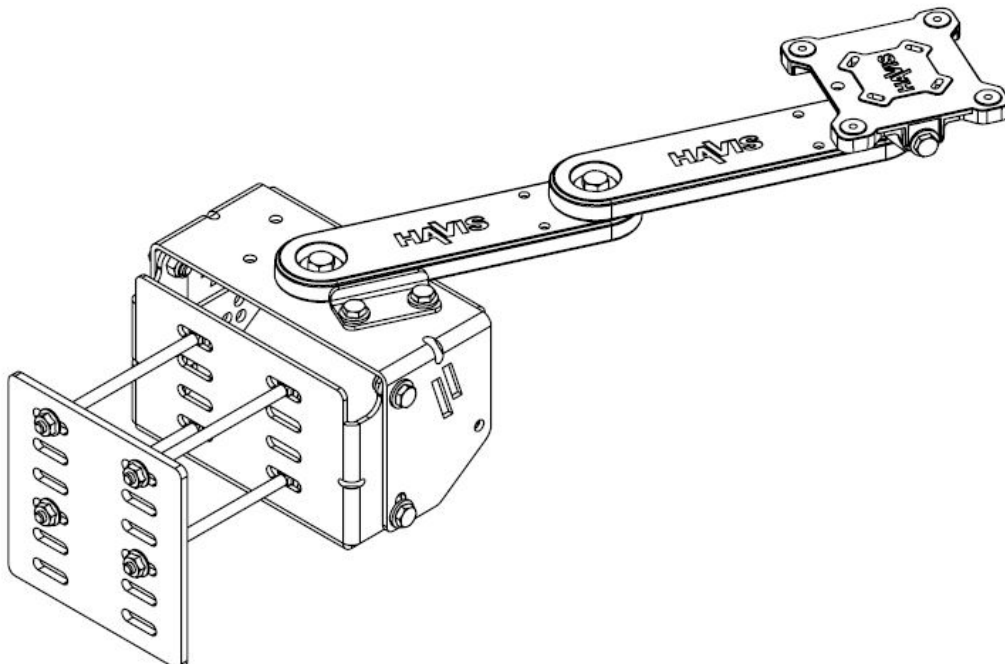
### PARTS and MOUNTING HARDWARE:

#### MH-ARM

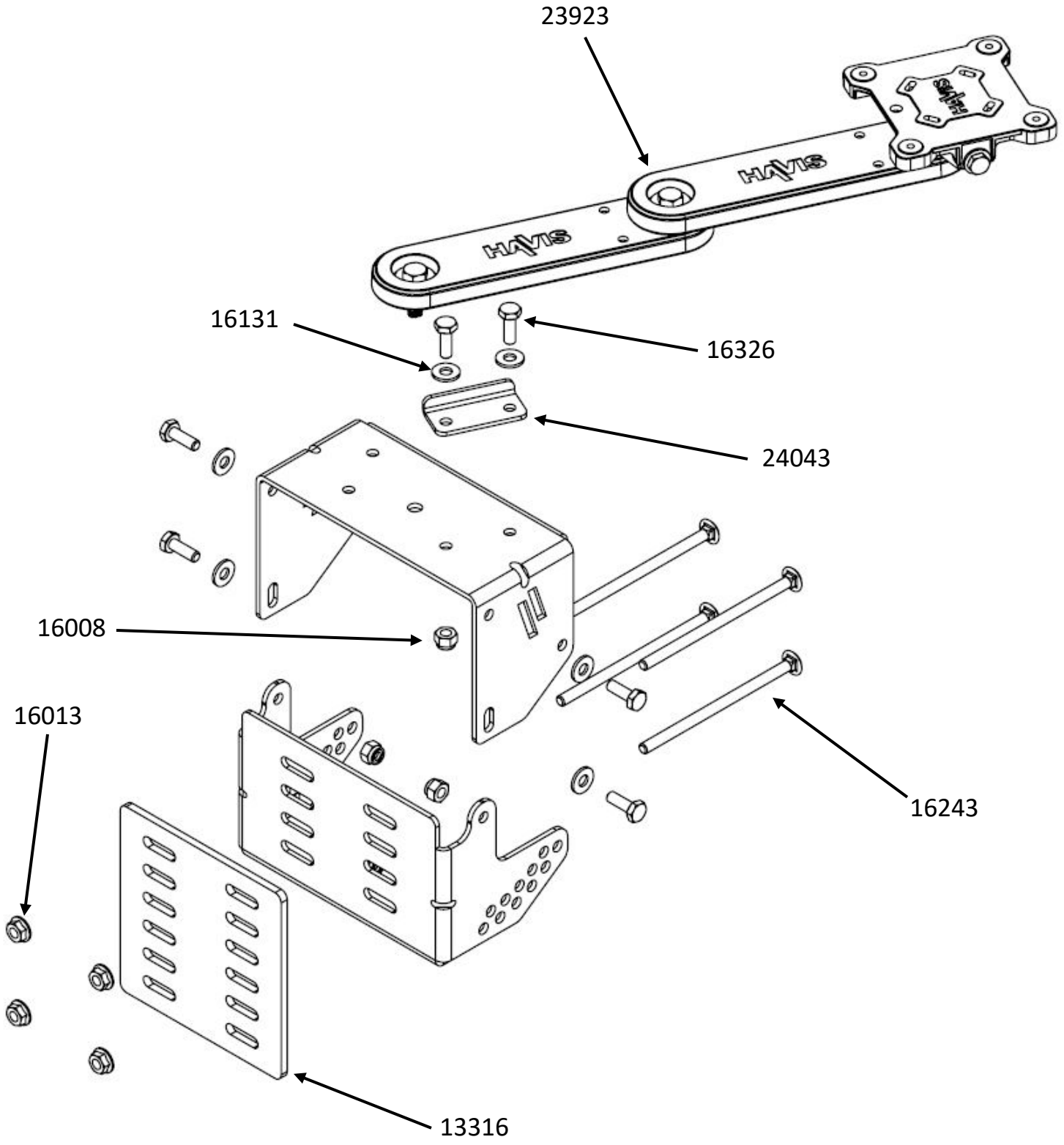
<u>QTY</u>	<u>DESCRIPTION</u>	<u>PART#</u>
1	Backing plate	13316
1	Pivot arm stop	24043
2	¼" Nylock nut	16008
4	¼" Serrated Nut	16013
2	¼" Flat washer	16131
4	¼" x 4.5" Carriage bolt	16243
2	¼" x ¾" Hex head bolt	16326

#### MD-ARM-XXXX

<u>QTY</u>	<u>DESCRIPTION</u>	<u>PART#</u>
1	Dual 6" keyboard swing arm (0606)	23923
1	Dual 6" keyboard swing arm (0603)	23839
1	Dual 6" keyboard swing arm (0600)	23925
1	Dual 6" keyboard swing arm (0306)	23924



**MH-ARM-0606**





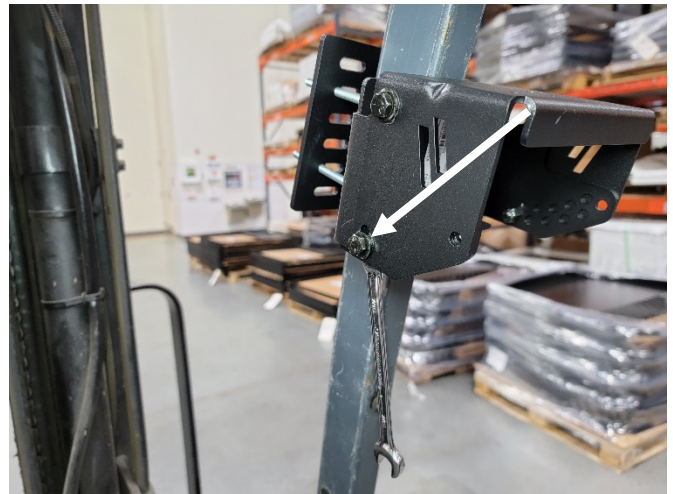
View of MH-ARM with MD-ARM-0606 components



Place MH-ARM assembly on forward frame of forklift and determine desired height.



Place carriage bolts through assembly, back plate, and tighten nuts.



The MH-ARM has adjustment points to ensure the top is level.



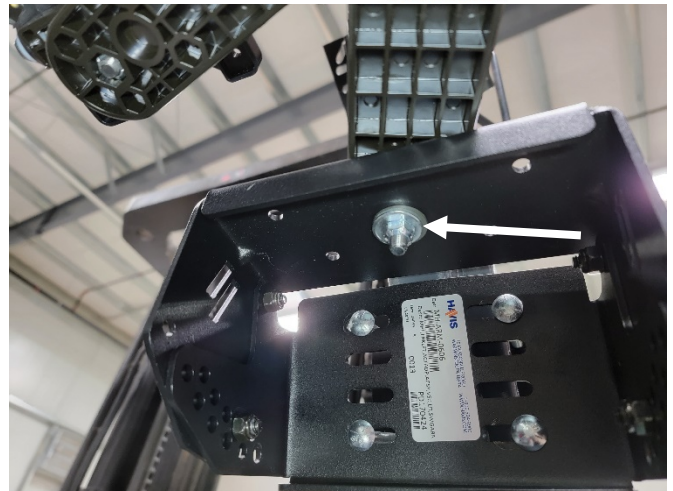
Remove the 1/4" x 3/4" bolt and nylock nut from both sides of the mount. Move mount until level.



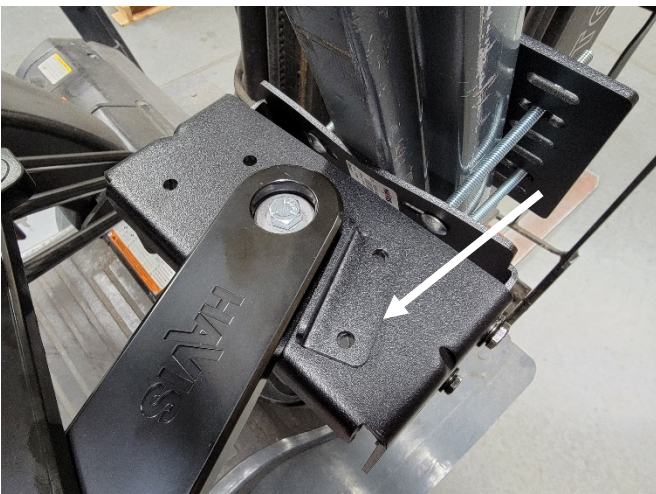
Reinstall previously removed hardware once mount is level. Tighten hardware.



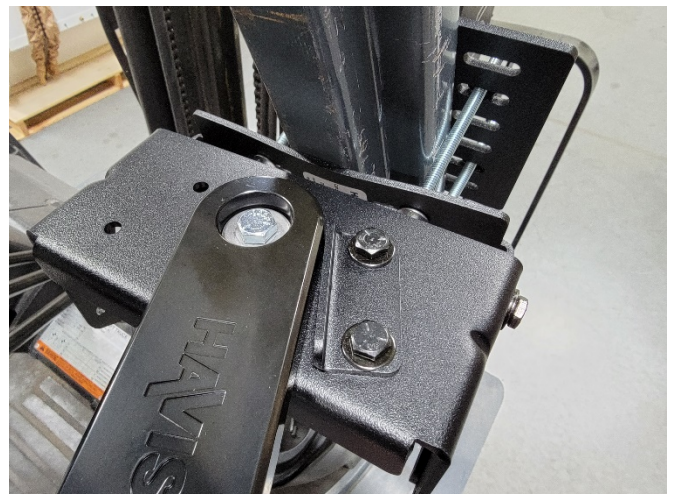
Mount the MD-ARM-XXXX to the top of the MH-ARM mount using supplied hardware.



Tighten hardware to desired tension. Arm should have similar tension to middle joint.



Add pivot arm stop to side of mount to limit ARM movement outside of forklift.



Install (2) 1/4" x 3/4" bolts, flat washers and nylock nuts through top of mount.



Add keyboard mount and keyboard to the MD-ARM-XXXX and confirm smooth movement.



Installation is now complete.