



4-Port DisplayPort 1.4 8K MST Dual Head KVM Console Switch

User Manual



04-1386A

P/N: CE-KV0H11-S1



Safety and Notice

The device has been tested for conformance to safety regulations and requirements, and has been certified for international use. However, like all electronic equipment, the device should be used with care. Please read and follow the safety instructions to protect yourself from possible injury and to minimize the risk of damage to the unit.

- Follow all instructions and warnings marked on this unit.
- Do not attempt to service this unit yourself, except where explained in this manual.
- Provide proper ventilation and air circulation and do not use near water.
- Keep objects that might damage the device and assure that the placement of this unit is on a stable surface.
- Use only the power adapter and power cords and connection cables designed for this unit.
- Do not use liquid or aerosol cleaners to clean this unit.
- Always unplug the power to the device before cleaning.



Thank You
for your purchase!

Features

- DisplayPort 1.4 compliant
- Supports up to 8K@30
Because bandwidth limit. Please refer to the MST Video output table to adjust the video output resolution.
- Supports DSC 1.2
- HDCP 2.2 compliant
- Video bandwidth: 32.4Gbps
- Supports SST or MST (Multi-Stream Transport)
- Supports separate line input and output
- Plug and Play without any driver needed
- Supports built-in 4-port USB 3.2 Gen 1 HUB to share USB devices
- Supports independent HID keyboard & mouse ports
- Supports hotkeys function
- EDID Bypass
- Firmware upgradable for support of new features and technology enhancements
- The KVM can switch every input by push buttons

Package contents

- 4-Port DisplayPort 1.4 8K MST Dual Head KVM Console Switch
- Power adapter DC 12V/2A
- USB 3.0 + MIC + Stereo cable x4
- DP Cable x4
- User Manual

What is DisplayPort MST? (Multi-Stream Transport)

MST has been a feature of the DisplayPort standard since version 1.2 was released. The key factor of the technology's usefulness for desktop users is that it allows multiple independent displays to be driven from a single DisplayPort output source device.

The combined data requirements of all the displays cannot exceed the limits of the single DisplayPort port that the video source originates from, nor exceed the capabilities of your graphics cards.

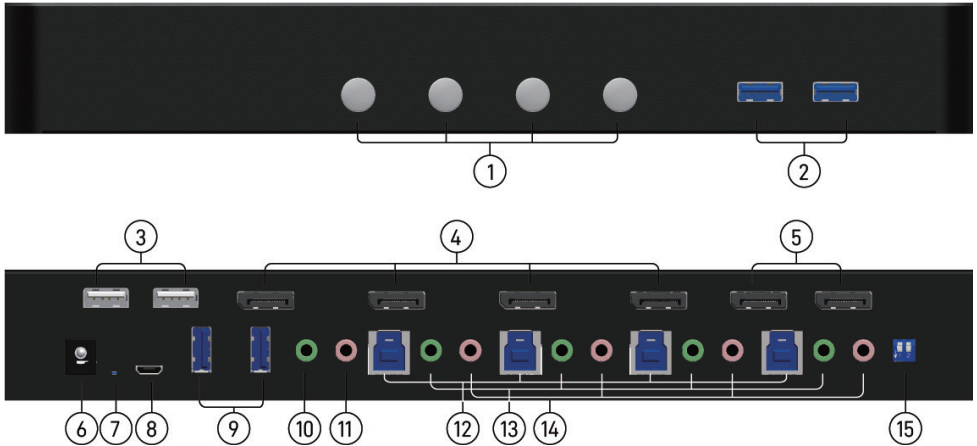
MST Video output table

	DP 1.2 Host	DP 1.4 Host
Single Display	4K60	8K30
Dual Display	4K30 + 4K30	4K60 + 4K60

Note

1. DisplayPort 1.2 spec does NOT support HDR
2. The suggested DisplayPort cable length is 1.5m to 2m
3. DisplayPort does NOT support dongle device
4. MacOS does NOT support MST technology and will only mirror each display
5. AMD graphics card does NOT support MST mode

Layout

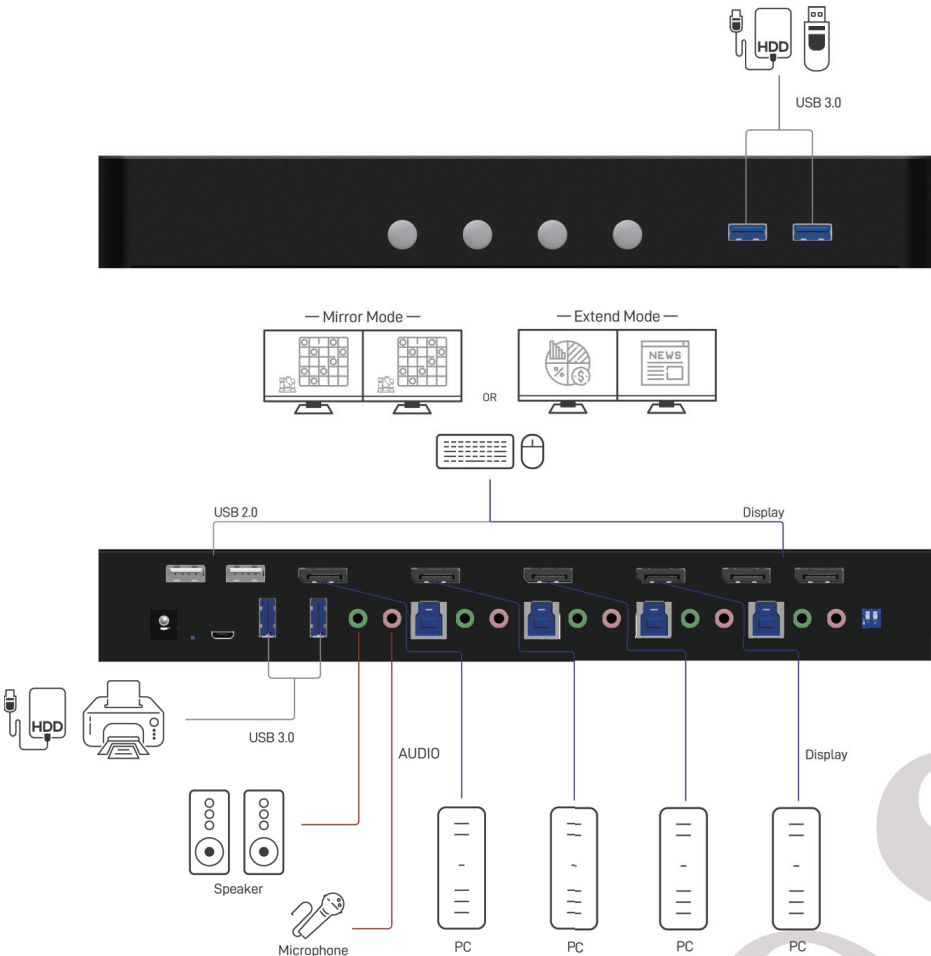


1. **Port 1-4 Selection Push Button:** Switch between computers
2. **USB 3.0 Hub:** Connect to USB devices 5V/0.9A
3. **Console USB HID Ports:** For keyboard & mouse only
4. **KVM Video IN 1-4:** Connect the DP cable to PC
5. **Console MST Video OUT:** Connect the DP cable to a display
Please refer to "MST Video output table"
6. **+12V DC:** +12V DC power jack
7. **Power Status:** Power indicator LED
8. **Micro USB:** For F/W update
9. **USB 3.0 Hub:** Connect to USB devices 5V/0.9A
10. **Speaker OUT:** Connect to analog stereo audio speaker
11. **Mic IN:** Connect to analog stereo audio source
12. **KVM USB 3.0(Type B):** Connect the USB cable to PC
13. **KVM speaker 1-4:** Connect the stereo cable to PC
14. **KVM Mic 1-4:** Connect the stereo cable to PC
15. **2-Pin Dip Switch:** For F/W update

Dip Switch

Position		Description
PIN#1	ON[↓]	KVM firmware update mode
	OFF[↑]	Working mode
PIN#2	ON[↓]	Reserved
	OFF[↑]	Reserved

Application



Hotkey

Default setting, all of the following commands begin by pressing the [Scroll Lock] or [Ctrl] key twice. Please follow the hotkey command listed below for selected operating functions:

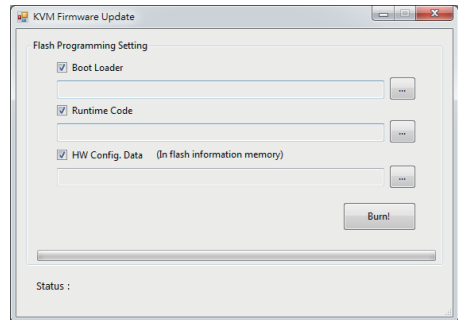
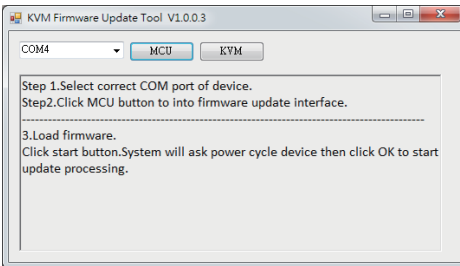
Hot key Definition	
[Scroll Lock] + [Scroll Lock] + [O] + [F] + [F]	Turn off HOTKEY function
[Scroll Lock] + [Scroll Lock] + [O] + [N]	Turn on HOTKEY function
[Scroll Lock] + [Scroll Lock] + [NUMBER1~4] + [Enter]	Switch input 1~4 source to output
[Scroll Lock] + [Scroll Lock] + [S]	Auto Scan/ Exit Auto Scan mode (Note 2)
[Scroll Lock] + [Scroll Lock] + [I] + [N] + [Enter]	Auto Scan Set [N]: 5~599 (Note 3)
[Scroll Lock] + [Scroll Lock] + [+]	Auto Scan Interval Add 5 Seconds
[Scroll Lock] + [Scroll Lock] + [-]	Auto Scan Interval Subtract 5 Seconds
[Scroll Lock] + [Scroll Lock] + [L] + [A]	Audio Lock / Audio Unlock
[Scroll Lock] + [Scroll Lock] + [L] + [U]	USB Lock / USB Unlock

Note:

1. Auto scan through each channel for quick screen browsing (default = 15 seconds)
2. You can set the auto scan interval according to the steps. (N = Number, 5~599)

Firmware update

1. Connect the Micro-USB to USB cable between PC and device
2. Set dip switch PIN#1 to ON[↓] and then power on device
3. Open firmware update software and then select COM Port
4. Click “KVM” button to open “KVM Firmware Update” windows
5. Check all items and click each “...” button to select the file which you want to write into device.
6. Click the “Burn!” button to start firmware update
7. After updating, please set the dip switch PIN#1 to OFF [↑] and power cycle the device



Support

For more info or tech support
<http://www.siig.com/support>