

- 1 x GCS82DPC
- 1 x Quick Start Guide
- 1 x Warranty Card

## System Requirements

### Console:

- DisplayPort monitor
- Standard wired USB keyboard
- Standard 3-button wired USB mouse
- Speakers and microphones (optional)

### Computer:

- DisplayPort port and USB-A port
- USB Type-C port with DisplayPort Alt Mode enables USB-C connection to carry DisplayPort signals
- Audio ports (optional)

### Operating Systems:

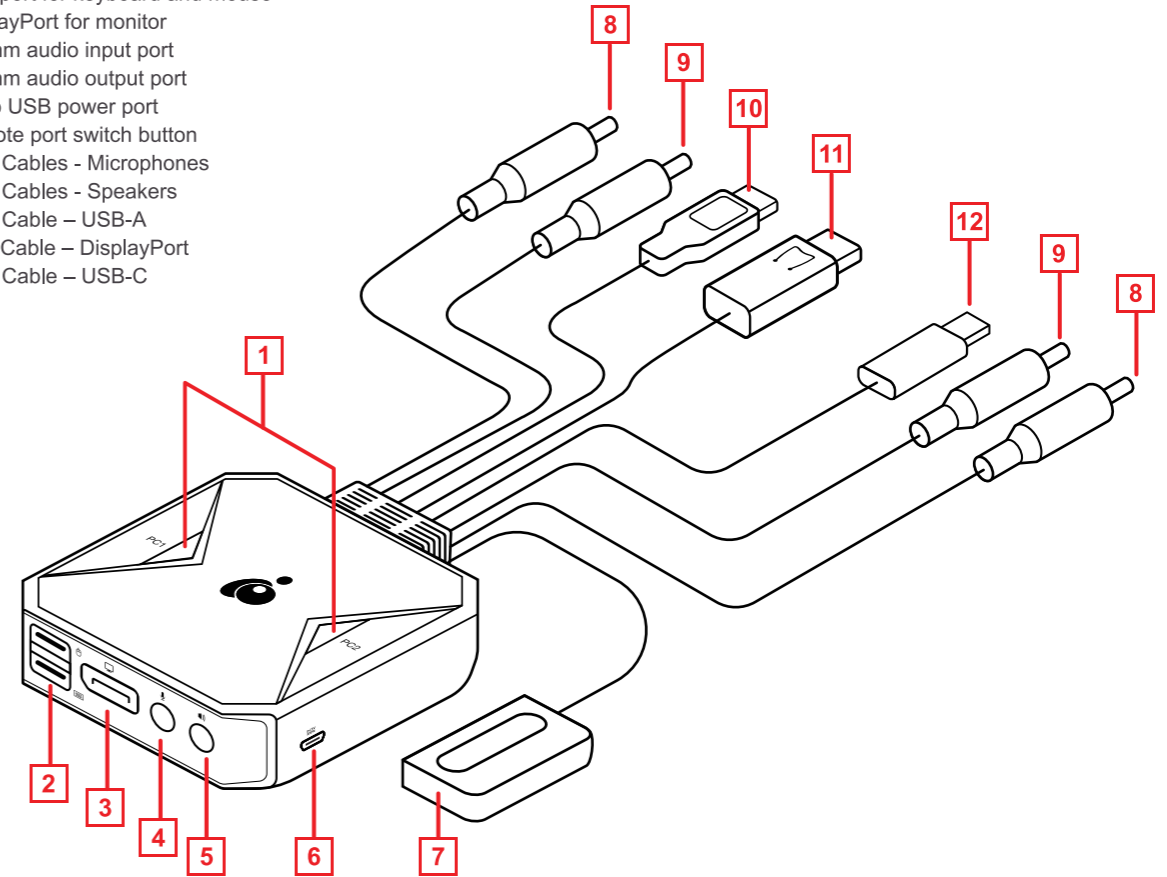
- Windows® 7, 8.1, 10, 11
- Mac OS® 9.0+
- Linux®, UNIX®, and other USB supported systems

## Quick Start Guide

2-Port 4K KVM Switch with DisplayPort/USB-C™ and Audio

GCS82DPC  
PART NO. Q1703

1. Port LEDs
2. USB port for keyboard and mouse
3. DisplayPort for monitor
4. 3.5 mm audio input port
5. 3.5 mm audio output port
6. Micro USB power port
7. Remote port switch button
8. KVM Cables - Microphones
9. KVM Cables - Speakers
10. KVM Cable – USB-A
11. KVM Cable – DisplayPort
12. KVM Cable – USB-C

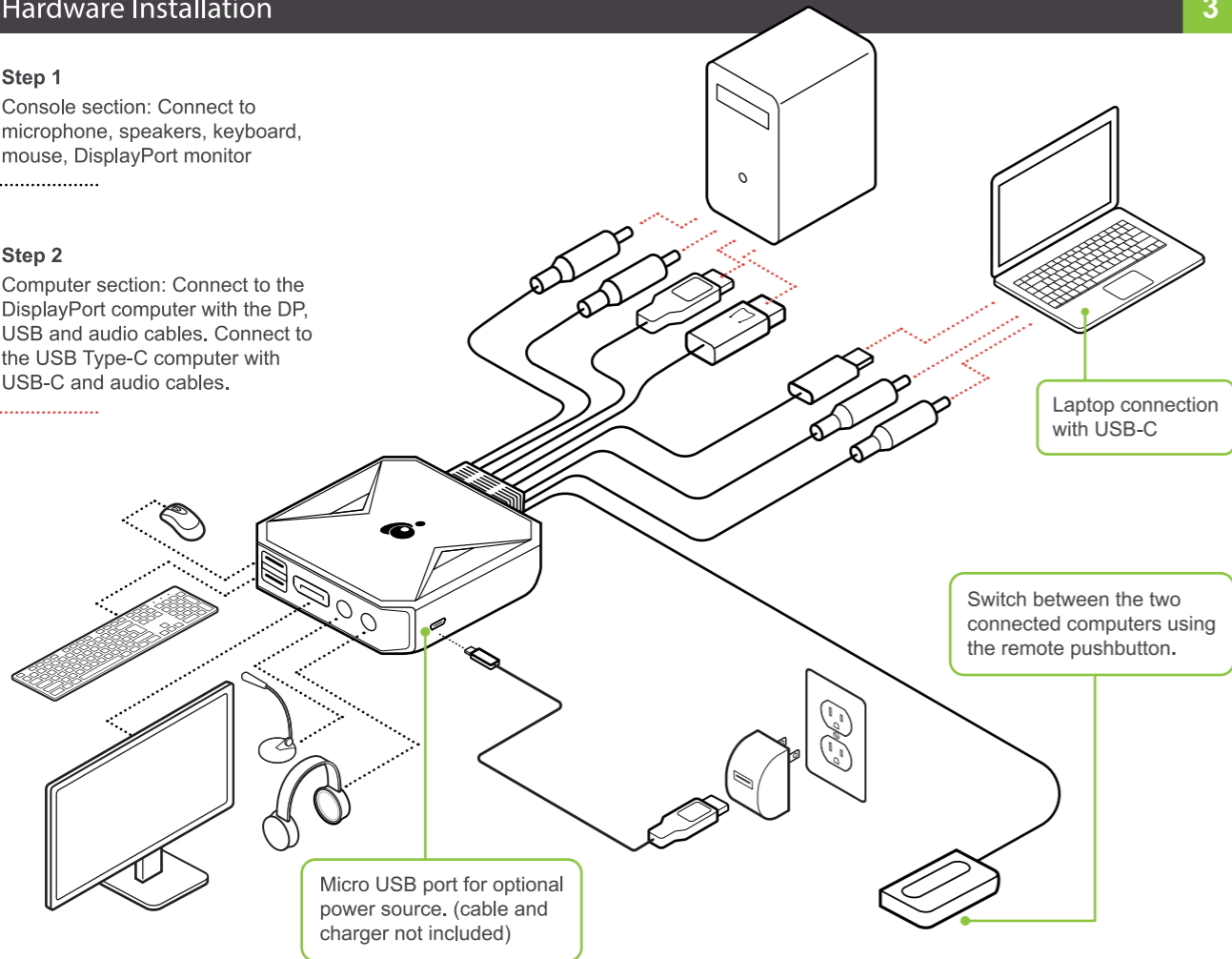


### Step 1

Console section: Connect to microphone, speakers, keyboard, mouse, DisplayPort monitor

### Step 2

Computer section: Connect to the DisplayPort computer with the DP, USB and audio cables. Connect to the USB Type-C computer with USB-C and audio cables.



## Limited Warranty

This product carries a limited or lifetime manufacturer's warranty. For terms and conditions visit <https://www.iogear.com/support/warranty>.

Register online at <https://www.iogear.com/register>

### Important Product Information

Product Model \_\_\_\_\_  
 Serial Number \_\_\_\_\_

## Contact

WE'RE HERE TO HELP YOU!  
 NEED ASSISTANCE SETTING UP THIS PRODUCT?

- Make sure you:
1. Visit [www.iogear.com](http://www.iogear.com) for more product information
  2. Visit [www.iogear.com/support](http://www.iogear.com/support) for live help and product support

**IOGEAR**  
[iogear.custhelp.com](http://iogear.custhelp.com)  
[support@iogear.com](mailto:support@iogear.com)  
[www.iogear.com](http://www.iogear.com)

## EMC Information

### Federal Communication Commission Interference Statement

This equipment has been tested and found to comply with the limits for a Class B digital service, pursuant to Part 15 of the FCC rules. These limits are designed to provide reasonable protection against harmful interference in a residential installation. Any changes or modifications made to this equipment may void the user's authority to operate this equipment. This equipment generates, uses, and can radiate radio frequency energy. If not installed and used in accordance with the instructions, may cause harmful interference to radio communications. However, there is no guarantee that interference will not occur in a particular installation. If this equipment does cause harmful interference to radio or television reception, which can be determined by turning the equipment off and on, the user is encouraged to try to correct the interference by one or more of the following measures:

- Reorient or relocate the receiving antenna
- Increase the separation between the equipment and receiver
- Connect the equipment into an outlet on a circuit different from that to which the receiver is connected
- Consult the dealer or an experienced radio/TV technician for help

**FCC Caution:** Any changes or modifications not expressly approved by the party responsible for compliance could void the user's authority to operate this equipment.

This device complies with Part 15 of the FCC Rules. Operation is subject to the following two conditions:

- (1) this device may not cause harmful interference, and
- (2) this device must accept any interference received, including interference that may cause undesired operation.

**CE Statement:**  
 This device has been tested and found to comply with the following European Union directives: Electromagnetic Capability (2014/30/EU) and Low Voltage (2006/95/EC).