

Quick Start Guide

2-Port Full HD KVM Switch with
HDMI® and USB Connections

GCS32HU
PART NO. Q1682

Package Contents

1

- 1 x GCS32HU
- 1 x Quick Start Guide
- 1 x Warranty Card

System Requirements

Console:

- HDMI monitor
- Standard wired USB keyboard
- Standard 3-button wired USB mouse

Computer:

- HDMI port
- USB Type-A port

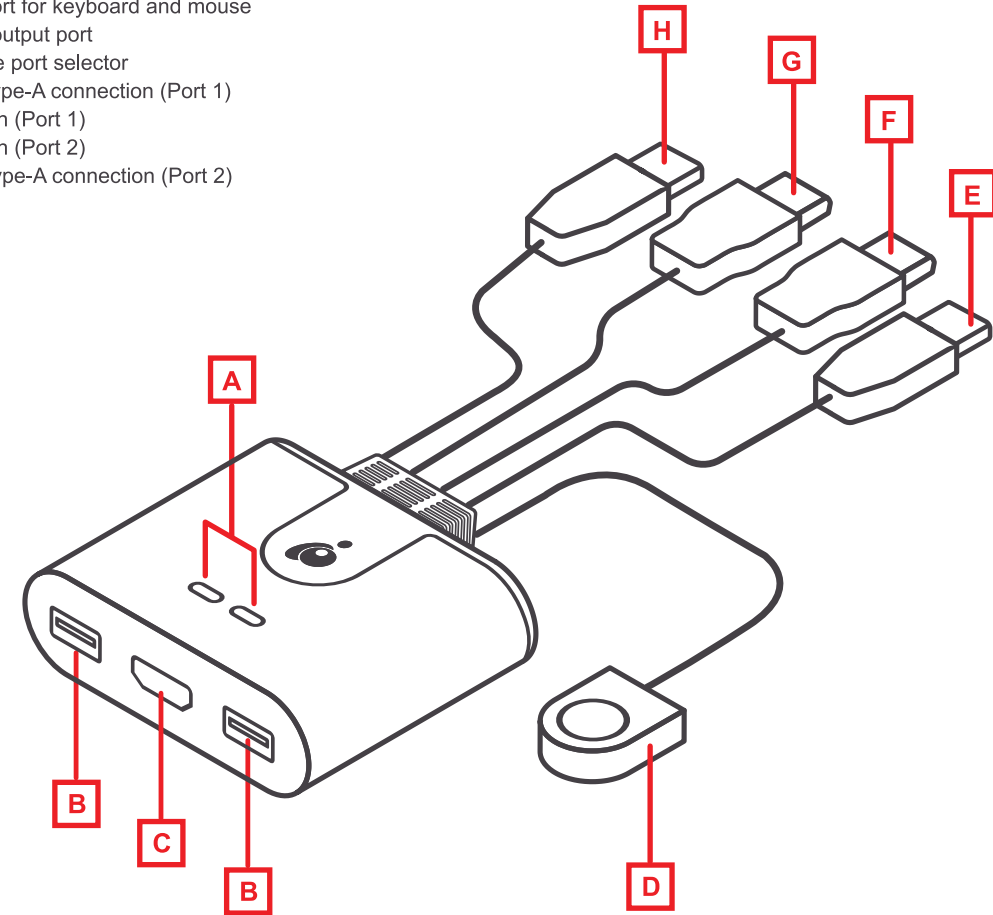
Operating Systems:

- Windows® 7, 8.1, 10
- Mac OS 9.0+
- Linux®, UNIX®, and other USB supported systems

Overview

2

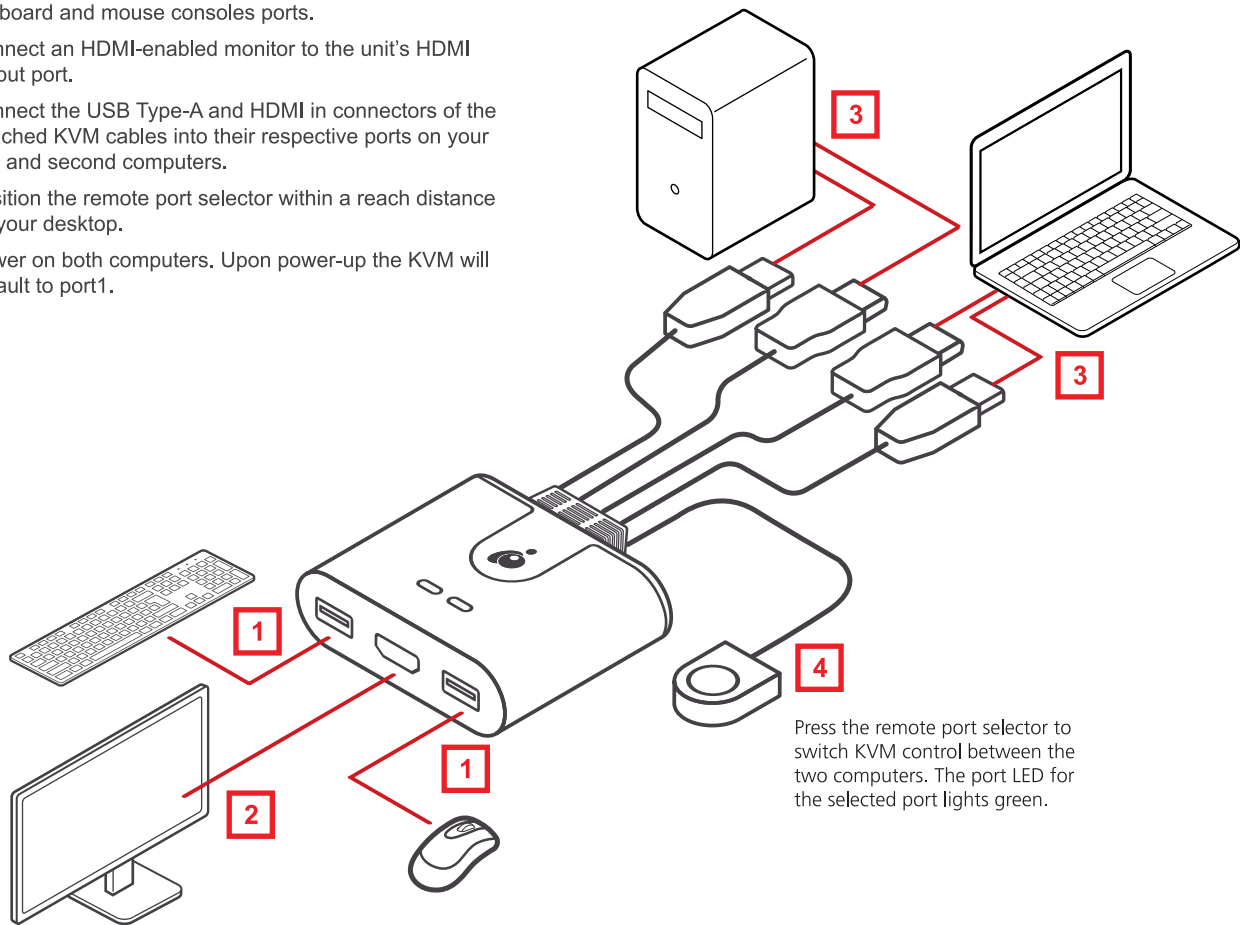
- A. Port LEDs
- B. USB port for keyboard and mouse
- C. HDMI output port
- D. Remote port selector
- E. USB Type-A connection (Port 1)
- F. HDMI in (Port 1)
- G. HDMI in (Port 2)
- H. USB Type-A connection (Port 2)



Hardware Installation

3

1. Connect your keyboard and mouse to the unit's USB keyboard and mouse consoles ports.
2. Connect an HDMI-enabled monitor to the unit's HDMI output port.
3. Connect the USB Type-A and HDMI in connectors of the attached KVM cables into their respective ports on your first and second computers.
4. Position the remote port selector within a reach distance on your desktop.
5. Power on both computers. Upon power-up the KVM will default to port1.



Limited Warranty

This product carries a 3 Year Limited or Lifetime Warranty. For the terms and conditions of this warranty, please go to <https://www.iogear.com/support/warranty>

Register online at <https://www.iogear.com/register>

Important Product Information

Product Model _____

Serial Number _____

Contact

WE'RE HERE TO HELP YOU!
NEED ASSISTANCE SETTING UP THIS PRODUCT?

Make sure you:

1. Visit www.iogear.com for more product information
2. Visit www.iogear.com/support for live help and product support

IOGEAR

iogear.custhelp.com

support@iogear.com

www.iogear.com

EMC Information

Federal Communication Commission Interference Statement

This equipment has been tested and found to comply with the limits for a Class A digital service, pursuant to Part 15 of the FCC rules. These limits are designed to provide reasonable protection against harmful interference in a residential installation. Any changes or modifications made to this equipment may void the user's authority to operate this equipment. This equipment generates, uses, and can radiate radio frequency energy. If not installed and used in accordance with the instructions, may cause harmful interference to radio communications. However, there is no guarantee that interference will not occur in a particular installation. If this equipment does cause harmful interference to radio or television reception, which can be determined by turning the equipment off and on, the user is encouraged to try to correct the interference by one or more of the following measures:

- Reorient or relocate the receiving antenna
- Increase the separation between the equipment and receiver
- Connect the equipment into an outlet on a circuit different from that to which the receiver is connected
- Consult the dealer or an experienced radio/TV technician for help

FCC Caution: Any changes or modifications not expressly approved by the party responsible for compliance could void the user's authority to operate this equipment.

This device complies with Part 15 of the FCC Rules. Operation is subject to the following two conditions:

- (1) this device may not cause harmful interference, and
- (2) this device must accept any interference received, including interference that may cause undesired operation.

CE Statement:

This device has been tested and found to comply with the following European Union directives: Electromagnetic Capability (2014/30/EU) and Low Voltage (2006/95/EC).