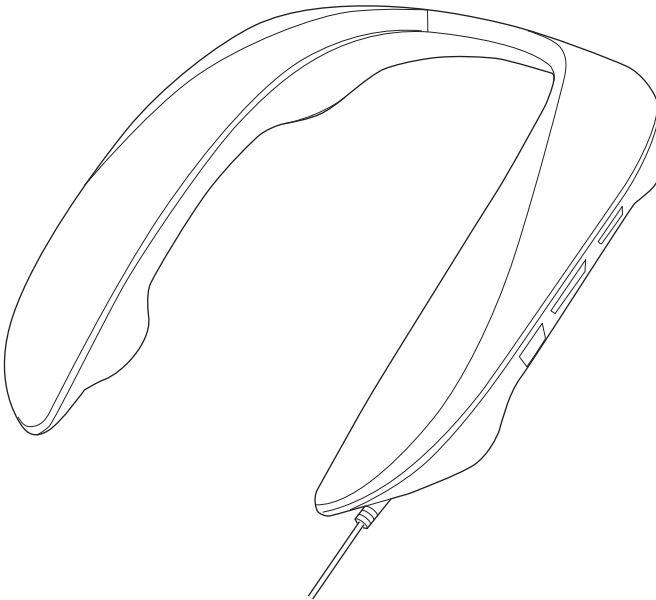


# Panasonic<sup>®</sup>

## Operating Instructions

Wearable Speaker System

Model No. **SC-GN01**



 **SOUND SLAYER™**

Thank you for purchasing this product.

Please read these instructions carefully before using this product, and save this manual for future use.

---

# Safety precautions

## ■ Unit

### **WARNING:**

To reduce the risk of fire, electric shock or product damage,

- Do not expose this unit to rain, moisture, dripping or splashing.
- Do not place objects filled with liquids, such as vases, on this unit.
- Use the recommended accessories.
- Do not remove covers.
- Do not repair this unit by yourself. Refer servicing to qualified service personnel.

## ■ Places where you use or store the product

- This unit is for indoor use.
- Do not use or leave where the temperature is extremely high such as in locations exposed to direct sunlight or near heating devices.
- Do not use or leave in locations with a lot of dust.
- Do not use or leave in locations with a lot of vibration.
- Do not use or leave in locations with a lot of moisture, such as bathrooms.

## ■ Handling

- Do not drop, hit, or apply strong shocks. This may cause malfunction.
- Sound may be interrupted or you may hear noise if the plug tip is dirty. If this occurs, wipe the tips of the plug and plug adaptor clean with a soft dry cloth.
- When connected with the audio cable (supplied)
  - This unit is for use with stereo AV devices.
  - Sound is not output from the right side (R) if used with monaural devices.
- If the USB cable has excess length, coil it up to an appropriate length on the USB plug side before use.

This unit may receive radio interference caused by mobile telephones during use. If such interference occurs, please increase separation between this unit and the mobile telephone.

The symbols on this product (including the accessories) represent the following: --- DC

---

# Table of contents

Safety precautions .....	2
<b>Before use</b>	
Accessories .....	4
Maintenance.....	4
Part names (Main unit).....	5
Part names (Operation buttons/audio input/output terminal) .....	6
<b>Preparation</b>	
Connecting with the USB cable (USB input) .....	7
Connecting with the supplied audio cable (analogue input).....	9
Fit the unit .....	10
Turning the unit on and off .....	10
<b>Operation</b>	
Basic operations.....	11
• Adjusting the volume .....	11
• Muting (speaker mute).....	11
Changing the unit's settings .....	12
• Enjoying sound field effects that suit the source (sound mode) .....	12
• Microphone muting .....	12
• Changing the volume balance between the front and back speakers (balance mode) .....	13
• Changing the volume of the other party in a chat (chat volume mode) .....	13
• Sound positioning mode.....	14
• Opening sound settings.....	14
<b>Other</b>	
Restore factory settings .....	15
Licenses .....	15
Troubleshooting.....	16
Specifications .....	18

## Expressions used in this document

- Pages to be referred to are indicated as "→ ○○".
- The product illustrations may differ from the actual product.

## Accessories

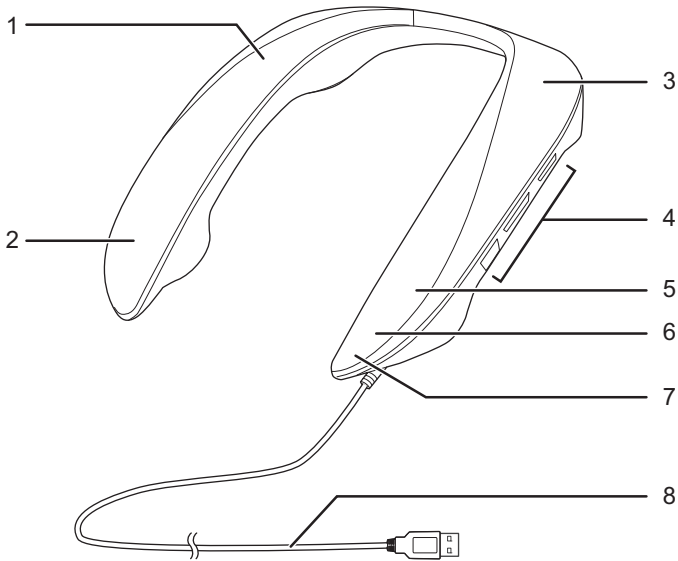
Please check and identify the supplied accessories.

**1 x Audio cable**

## Maintenance

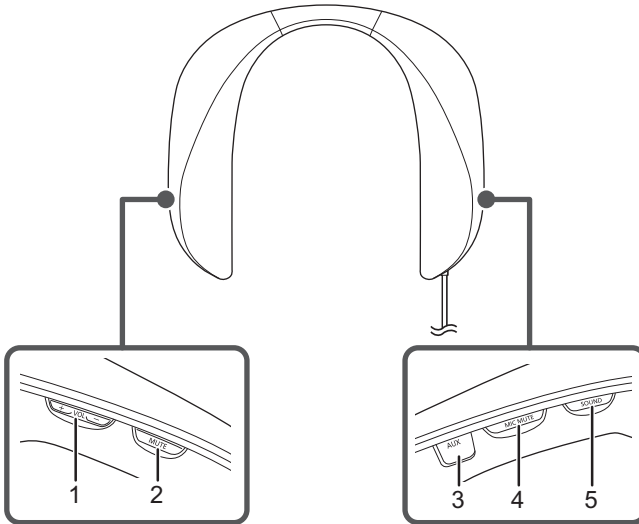
- To clean the main unit, wipe with a soft, dry cloth.
- Never use alcohol, paint thinner or benzine to clean this system.
- Before using chemically treated cloth, read the instructions that came with the cloth carefully.

## Part names (Main unit)



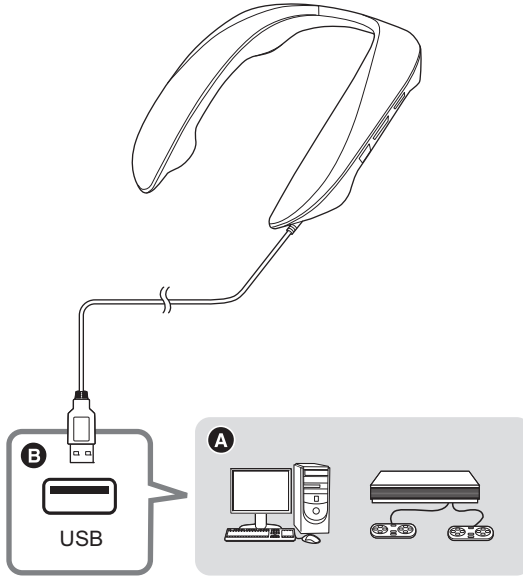
- 1 Surround (R) speaker
- 2 Front (R) speaker
- 3 Surround (L) speaker
- 4 Operation buttons/audio input/output terminal (→ 6, "Part names (Operation buttons/audio input/output terminal)")
- 5 Front (L) speaker
- 6 Microphone
- 7 Operation indicator (red) (→ 12, "Microphone muting")
- 8 USB cable

## Part names (Operation buttons/audio input/output terminal)



- 1 [+ VOL -] buttons (volume buttons)
- 2 [MUTE] button (sound mute button)
- 3 Audio input/output terminal [AUX] (connect the supplied sound audio cable)
- 4 [MIC MUTE] button (microphone mute button)
- 5 [SOUND] button (sound mode button)

## Connecting with the USB cable (USB input)



**A** Connected device

**B** Connect to a USB port with a power supply capacity of 5 V 900 mA. (A USB3.0 port is recommended.)  
Volume reduces if the power supply of the port is 5 V 500 mA.

Connect to a device with a USB port (PC, PS4/PS5, etc.).

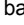
- Power is supplied from the USB port that the unit is connected to.
- First turn on the device to be connected, then connect this unit.
- In order to properly use this unit, depending on the operating environment and OS, you need to change some sound settings on the computer. (→ 8, "When connecting to a PC")

### ■ When connecting to a PC

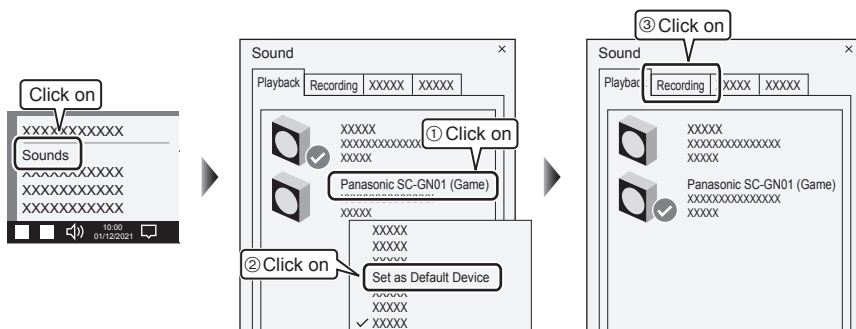
In order to properly use this unit, depending on the operating environment and OS, you need to change some sound settings on the computer. Two devices are shown when you connect this unit, so make the settings as follows:

#### Make “Panasonic SC-GN01 (Game)” the default device for “Playback”.



- 1 Click the speaker icon in the task tray.
- 2 Click the “” at the top right of the volume bar.
- 3 Select “Panasonic SC-GN01 (Game)”.

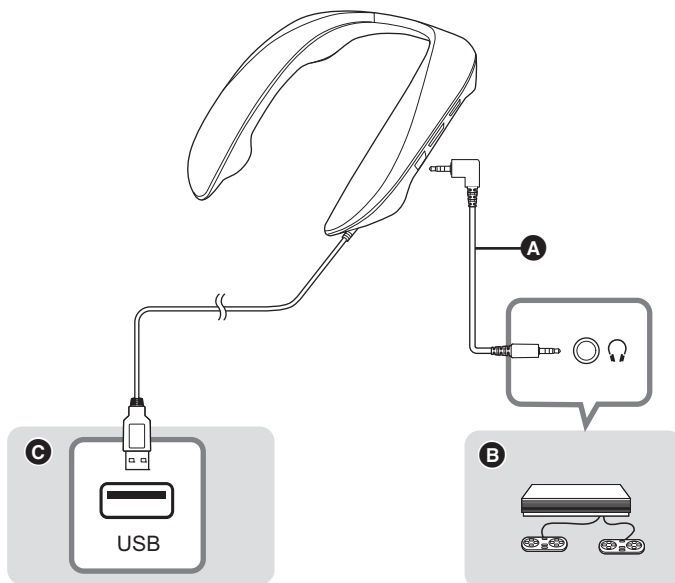
#### Make “Panasonic SC-GN01 (Game)” the default device for “Playback”, make “Panasonic SC-GN01 (Chat)” the default device for “Recording”.



- 1 Right-click the speaker icon in the task tray and select “Sounds”.
- 2 Click the “Playback” tab.
- 3 Right-click “Panasonic SC-GN01 (Game)” and select “Set as Default Device”.
- 4 Click the “Recording” tab.
- 5 Right-click “Panasonic SC-GN01 (Chat)” and select “Set as Default Device”.



## Connecting with the supplied audio cable (analogue input)



- Ⓐ Audio cable (supplied)
- Ⓑ Connected device
- Ⓒ a USB AC adaptor, etc.

Connect using the supplied audio cable.

Use this method when connecting to a device equipped with an analogue audio input/output terminal (headset terminal) (Nintendo Switch, Xbox, etc.).

- Power is not supplied to this unit when only the audio cable is used for the connection. Also connect the USB cable to a port that supplies power (a USB AC adaptor, etc.).

### Note:

- Do not use any other audio cables except the supplied one.
- Connect this unit and the connected device with the audio cable first, then connect the USB cable to the power source (USB AC adaptor, etc.). Noise may occur if you plug in or unplug the audio cable while the USB cable is connected (power is being supplied).
- Noise may occur if you connect a device which is the same as the input and output of analogue audio signals or another device that is connected by some kind of wiring with a USB cable.

## Fit the unit

Fit the unit by putting it around your shoulders, taking care of how it is positioned.



## Turning the unit on and off

The power for this unit is turned on and off by plugging the USB cable into or unplugging it from the power supply.

### To turn the unit on

Plug the USB cable into the power supply.

### To turn the unit off

Unplug the USB cable from the power supply.

---

### Note:

- When using a USB AC adaptor, etc., connect the USB cable to it first, then plug it to the mains socket.
- If the sound is distorted, turn down the volume.
- If there is an excessive input signal, the function of this unit may stop automatically and the power may be turned off for safety.

---

# Basic operations

## Adjusting the volume

Adjust the volume. (17 levels)

**Press the [+ VOL –] buttons.**

---

**Note:**

- The volume setting is maintained even when the power is turned off.
- Separate volume settings are maintained for connection using the USB cable (USB input) and connection using the supplied audio cable (analogue input).

## Muting (speaker mute)

Temporarily makes the sound inaudible.

- A voice prompt will notify you that speaker muting is ON/OFF.

**Press the [MUTE] button.**

An operation tone is made and the sound is muted.

- Press again to cancel.

---

**Note:**

- Mute is cancelled in the following cases:
  - When the power is turned off/on
  - When volume is adjusted
  - When the unit enters the mode for balancing the speakers
  - When the unit enters the sound positioning mode

## Changing the unit's settings

### Enjoying sound field effects that suit the source (sound mode)

You can enjoy sound field effects that suit the images on connected equipment by switching the sound mode. (Factory default: RPG)

#### Press the [SOUND] button.

The voice prompt announces the current mode when you press the [SOUND] button.

The mode changes if you press the [SOUND] button again within 3 seconds of the announcement.

• A guidance message will notify you of the mode you switched to.

<b>RPG</b>	Mode suited to RPG (role-playing games).
<b>FPS</b>	Mode suited to FPS (first-person shooter games).
<b>Voice</b>	Enhances voices. Mode that makes people's voices easier to hear.
<b>Music</b>	Enjoy sound with instruments and vocals enveloping you.
<b>Cinema</b>	Enjoy sound with the spatial effects and power you would expect from a film.
<b>STEREO</b>	Output is stereo.

#### Note:

• The setting is maintained until it is changed again.

### Microphone muting

Switches ON/OFF the microphone.

• A voice prompt will notify you that microphone muting is ON/OFF.

#### Press the [MIC MUTE] button.

The operation indicator (red) lights and the microphone is muted.

• Press again to cancel.

#### Note:

• Mute is cancelled when you turn off the unit.

## Changing the volume balance between the front and back speakers (balance mode)

You can adjust sound balance by changing the output of the surround speakers against the front speakers. (Factory default: Unadjusted (0 dB))

- 1 While pressing the [MIC MUTE] button, press the [VOL –] button.**
  - An operation tone is made and the unit is in the mode for balancing the speakers.
  - When the unit enters the mode for balancing the speakers, the operation indicator blinks twice each time.
- 2 While the unit is in the mode for balancing the speakers, press the [+ VOL –] buttons to adjust (7 levels).**
  - Output increases when you press the [+ VOL] button.
  - Output decreases when you press the [VOL –] button.
  - Operation tones are made at the maximum value (+3 dB), unadjusted value (0 dB), and minimum value (–3 dB).
- 3 Press any button other than the [+ VOL –] buttons to complete the settings.**
  - The settings are also completed if the unit is left in the mode for balancing the speakers for 10 seconds or more.

### Note:

- These can only be adjusted when this unit is connected by the USB cable.
- The setting is maintained until it is changed again.

## Changing the volume of the other party in a chat (chat volume mode)

Adjust the audio output of the other party in a chat that is output from the speakers. (Factory default: Unadjusted value (0 dB))

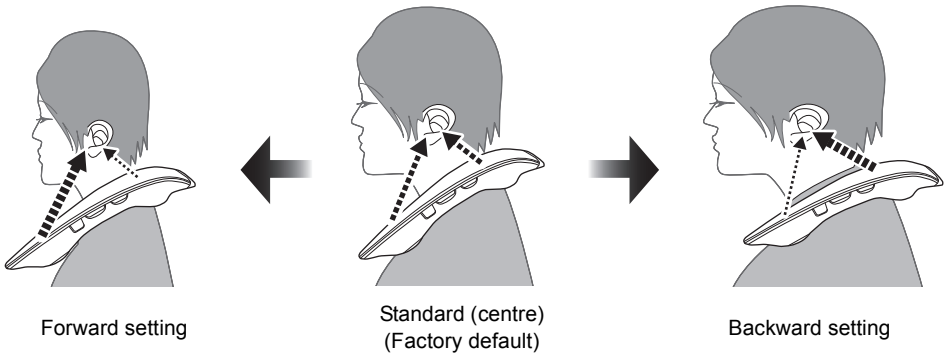
- 1 While pressing the [MIC MUTE] button, press the [+ VOL] button.**
  - An operation tone is made and the unit is in the chat volume mode.
  - When the unit enters the chat volume mode, the operation indicator blinks three times each time.
- 2 While the unit is in the chat volume mode, press the [+ VOL –] buttons to adjust (7 levels).**
  - Output increases when you press the [+ VOL] button.
  - Output decreases when you press the [VOL –] button.
  - Operation tones are made at the maximum value (+3 dB), unadjusted value (0 dB), and minimum value (–3 dB).
- 3 Press any button other than the [+ VOL –] buttons to complete the settings.**
  - The settings are also completed if the unit is left in the chat volume mode for 10 seconds or more.

### Note:

- These can only be adjusted when this unit is connected to a computer by the USB cable.
- The setting is maintained until it is changed again.

## Sound positioning mode

It may not be possible to achieve a suitable surround effect due to the difference in positioning between the front and back speakers compared to the ear when the unit is placed on your shoulders. You can make allowances so that it sounds suitable by adjusting the audio output of the speakers.



### 1 While pressing the [MIC MUTE] button, press the [MUTE] button.

- An operation tone is made and the unit is in the sound positioning mode.
- When the unit enters the sound positioning mode, the operation indicator blinks four times each time.

### 2 While the unit is in the sound positioning mode, press the [+ VOL -] buttons to adjust.

- Pressing the [+ VOL] button sets the speaker sound position forwards.
- Pressing the [VOL -] button sets the speaker sound position backwards.
- An operation tone is made when set to forward, standard (centre), or backward.

### 3 Press any button other than the [+ VOL -] buttons to complete the settings.

- The settings are also completed if the unit is left in the sound positioning mode for 10 seconds or more.

#### Note:

- The setting is maintained until it is changed again.

## Opening sound settings

An opening sound is made when you turn on this unit. Use the following procedure to turn off the opening sound (so the sound is not made).

#### To turn the opening sound off

#### Press and hold the [MUTE] button for 10 or more seconds.

- An operation tone is made and the opening sound is turned off.
- To turn the sound on again, press and hold the [MUTE] button for 10 seconds again.

#### Note:

- The setting is maintained until it is changed again.

## Restore factory settings

This is done when returning the unit to the state of purchase, such as by discarding or transferring the unit.

- 1 Press [VOL –] until the volume reaches the minimum level [0].**
  - An operation tone is made when the volume reaches the minimum level [0].
- 2 Press and hold the [SOUND] and [MUTE] buttons for about 5 seconds or more.**
  - An operation tone is made and the unit is in the factory settings mode.
  - When the unit enters the factory settings mode, the operation indicator blinks once every second.
- 3 Press the [MIC MUTE] button while the unit is in the factory settings mode.**
  - The settings are each initialised, returning to the factory settings.

## Licenses

SOUNDSLAYER is a trademark of Panasonic Corporation.

PS4 and PS5 are registered trademarks or trademarks of Sony Interactive Entertainment Inc.

Windows, Xbox, Xbox One, Xbox Series S, Xbox Series X are registered trademarks or trademarks of Microsoft Corporation.

Nintendo Switch is a registered trademark or a trademark of Nintendo.

Other names of systems and products mentioned in these instructions are usually the registered trademarks or trademarks of the manufacturers who developed the system or product concerned.

Some <sup>TM</sup> and <sup>®</sup> marks are not specified in the text.

---

## Troubleshooting

Before requesting service, make the following checks. If you are in doubt about some of the check points, or if the solutions indicated do not solve the problem, consult your dealer for instructions.

### **The unit does not work.**

- Make sure the USB cable is firmly connected to the USB port of each device or the AC adaptor (optional).
  - Make sure the USB port is normal. If there are other USB ports on your computer, try using one of the other USB ports.
  - If the power still does not come on even after performing the above, unplug the USB cable and then plug it in again.
- 

### **There is no sound.**

- The USB port or plug may be dirty. Wipe the USB port and plug clean with a soft dry cloth.
  - The sound may have been muted or turned down low on the connected device. Adjust the volume on the connected device.
  - Make sure that "Panasonic SC-GN01 (Game)" is selected as the audio output device on the connected device.
- 

### **The sound is low.**

- Also increase the volume on the other devices as well as this unit.
  - You may have connected to a USB2.0 port. Connect to a USB3.0 port.
- 

### **There are interruptions to the sound. / Too much noise. / Poor sound quality.**

- Make sure the USB port is normal. If there are other USB ports on your computer, try using one of the other USB ports.
  - There may be a USB hub between the unit and the computer. If there are other USB ports on your computer, try using one of the other USB ports.
  - You may be trying to supply power from the USB port of a device which is the same as the input and output of analogue audio signals or another device that is connected by some kind of wiring. Supply power with a USB AC adaptor, etc..
- 

### **Cannot operate the unit.**

- Try unplugging the USB cable and then plugging it in again.
- 

### **There is no surround effect.**

- Make sure that "Panasonic SC-GN01 (Game)" is selected as the sound device on your PC.
- 

### **No output of chat audio.**

- Make sure that "Panasonic SC-GN01 (Chat)" is selected as audio output device on your game, chat app, or meeting app, etc.
-



**Poor sound quality for chat audio.**

- Turn off the noise cancelling functions in the apps you are using for chat or meetings, then try again.
- 

**Low volume for chat audio.**

- Also increase the volume on the other devices as well as this unit.
- 

**No output of analogue audio.**

- Check whether there is a problem with the headphone jack or analogue output terminal on the device you are using. Use a pair of earphones or headphones to check whether audio is being output correctly, then try again.
- 

**This unit is not detected when connected with the USB cable.**

- Try restarting the connected device.
- 

**An opening sound is made while the USB cable is connected.**

- Due to its specifications, the connected device may temporarily stop supplying power via USB. When this occurs, this unit may turn off and then on, but it is not a malfunction.
- 

**I have changed the settings in the balance mode and chat volume mode, but the speaker volume does not increase after the change.**

- This unit has a function that activates a control mechanism that suppresses the output when the volume is high. This is not a malfunction. Before making adjustments, lower the volume.
-

# Specifications

## ■ General

<b>Power supply</b>	DC 5 V, 900 mA • Power is supplied from the USB cable on the connected equipment
<b>Power consumption</b>	Approx. 4.5 W
<b>Dimensions (W × H × D)</b>	Approx. 240 mm × 46 mm × 209 mm
<b>Length of USB cable</b>	Approx. 3 m (2.94 m ± 0.05 m)
<b>Mass</b>	Approx. 244 g
<b>Operating condition</b>	Operating temperature range: 5 °C to 35 °C  Operating humidity range: 20 %RH to 80 %RH (no condensation)

## ■ Amplifier section

<b>Total RMS output power (non-simultaneous drive)</b>	4 W <sup>*1</sup> (1 kHz, T.H.D., 10.0 %, 6 Ω, 20 kHz LPF)
--	---

## ■ Speaker section

<b>Front speaker (L/R) built in, Surround speaker (L/R) built in</b>	Speaker units: 3 cm Cone type 4 pcs  Impedance: 6 Ω
--	---

## ■ Microphone section

<b>Microphone units</b>	MEMS type 2 pcs
-------------------------	-----------------

## ■ Terminal section

<b>USB plug</b>	USB Type A
<b>Audio input/output (AUX) (for headset terminal)<sup>*2</sup></b>	3.5 mm mini jack CTIA compliant <sup>*3</sup>

### ■ Compatible equipment\*4

<b>Connection with USB cable</b>	PC, PS4/PS5, Nintendo Switch (TV mode)
<b>Connection with Audio cable*5</b>	PC, PS4/PS5, Xbox One/Xbox Series S/X, Nintendo Switch (Tabletop/Handheld mode)
<b>PC compatible OS*6</b>	Windows 10

### ■ Accessories

<b>Audio cable</b>	Approx. 1.5 m
--------------------	---------------

- \*1 When the power supply capacity of the USB port on the connected device is 5 V 900 mA. Volume reduces if the power supply is 5 V 500 mA.
- \*2 When the audio cable (supplied) is used for the connection to the headset terminal on the connected device, also connect the USB cable to either the USB port on the connected device or to a USB AC adaptor (optional). Use a USB AC adaptor (optional) with a power supply capacity equivalent to 5 V 900 mA.
- \*3 Audio output and microphone input operation is not guaranteed with all devices equipped with headset terminals compatible with a 3.5 mm mini jack.
- \*4 Before connecting with other devices, be sure to read the operating instructions for each of the devices.
- \*5 For use, connect the USB plug to either the USB port on the connected device or to a USB AC adaptor (optional).
- \*6 Operation is not guaranteed on all computers that are running the supported OSs.

• Specifications are subject to change without notice.

### Disposal of Old Equipment Only for European Union and countries with recycling systems



This symbol on the products, packaging, and/or accompanying documents means that used electrical and electronic products must not be mixed with general household waste. For proper treatment, recovery and recycling of old products, please take them to applicable collection points in accordance with your national legislation. By disposing of them correctly, you will help to save valuable resources and prevent any potential negative effects on human health and the environment.

For more information about collection and recycling, please contact your local municipality. Penalties may be applicable for incorrect disposal of this waste, in accordance with national legislation.

**For the United Kingdom and Ireland customers**

## Sales and Support Information

### Customer Communications Centre

- For customers within the UK: 0344 844 3899
- For customers within Ireland: 01 289 8333
- Monday–Friday 9:00 am–5:00 pm (Excluding public holidays).
- For further support on your product, please visit our website:  
[www.panasonic.co.uk](http://www.panasonic.co.uk)

### Direct Sales at Panasonic UK

- Order accessory and consumable items for your product with ease and confidence by phoning our Customer Communications Centre Monday–Friday 9:00 am–5:00 pm (Excluding public holidays).
- Or go on line through our Internet Accessory ordering application at [www.pas-europe.com](http://www.pas-europe.com).
- Most major credit and debit cards accepted.
- All enquiries transactions and distribution facilities are provided directly by Panasonic UK.
- It couldn't be simpler!
- Also available through our Internet is direct shopping for a wide range of finished products. Take a browse on our website for further details.

Manufactured by:

Panasonic Corporation  
Kadoma, Osaka, Japan

Importer for UK:

Panasonic UK, a branch of  
Panasonic Marketing Europe GmbH  
Maxis 2, Western Road, Bracknell, Berkshire, RG12 1RT

Authorized Representative in Europe:

Panasonic Marketing Europe GmbH  
Panasonic Testing Centre  
Winsbergring 15, 22525 Hamburg, Germany



Panasonic Corporation

<http://www.panasonic.com>

© Panasonic Corporation 2021

(En)

TQBS0443  
F0821MH0