



OWNER'S MANUAL

# LG Cloud Device

## All-in-One Thin Client

---

Please read this manual carefully before operating your set and retain it for future reference.

24CN670N

24CN670NK

24CN670I

24CN670W

24CN670WK

24CN670IK

[www.lg.com](http://www.lg.com)

Copyright © 2020 LG Electronics Inc. All Rights Reserved.

# TABLE OF CONTENTS

ON CLEANING .....	3
LICENSE .....	3
OPEN SOURCE SOFTWARE NOTICE INFORMATION .....	4
BEFORE READING THE OWNER'S MANUAL.....	4
ASSEMBLY AND PREPARING.....	5
USING THE MONITOR.....	19
USING THE RFID FUNCTION .....	22
USER SETTINGS .....	22
TROUBLESHOOTING .....	27
PRODUCT SPECIFICATION .....	29

# ON CLEANING

## Recommended Cleaning Chemicals

- Isopropanol 70 %
- Ethanol 70 %
- Biospot 500 ppm
- 0.9 % NaCl solution

## How to Use Cleaner

- Prior to cleaning, turn off the monitor and remove the power cable.
- Soak a soft cloth in a recommended cleaner, then lightly rub the screen with no more than 1 N of force.
- The cleaner could cause serious damage if it leaks inside the monitor while cleaning.
- The display could be damaged, so only clean the parts of the monitor other than the screen's LCD panel.
- Do not use benzene, thinner, acids or alkaline cleaners or other such solvents.
- Cleaning guidelines for displays must only be carried out by medical professionals (doctors or nurses) and must not be handled by patients.

# LICENSE

Each model has different licenses. Visit [www.lg.com](http://www.lg.com) for more information on the license.



The terms HDMI, HDMI High-Definition Multimedia Interface, and the HDMI Logo are trademarks or registered trademarks of HDMI Licensing Administrator, Inc.



MaxxAudio and additional MAXX trademarks are trademarks and/or registered trademarks of Waves Audio Ltd.



The SuperSpeed USB Trident logo is a registered trademark of USB Implementers Forum, Inc.



(Wi-Fi/Bluetooth supported models only.)

The Bluetooth® word mark and logos are registered trademarks owned by Bluetooth SIG, Inc. and any use of such marks by LG Electronics Inc. is under license. Other trademarks and trade names are those of their respective owners.

\* USB Type-C™ and USB-C™ are trademarks of USB Implementers Forum.

## OPEN SOURCE SOFTWARE NOTICE INFORMATION

**Only 24CN670W, 24CN670WK, 24CN670I, 24CN670IK**

To obtain the source code under GPL, LGPL, MPL, and other open source licenses, that is contained in this product, please visit <http://opensource.lge.com>.

In addition to the source code, all referred license terms, warranty disclaimers and copyright notices are available for download.

LG Electronics will also provide open source code to you on CD-ROM for a charge covering the cost of performing such distribution (such as the cost of media, shipping, and handling) upon email request to [opensource@lge.com](mailto:opensource@lge.com).

This offer is valid for a period of three years after our last shipment of this product. This offer is valid to anyone in receipt of this information.

## BEFORE READING THE OWNER'S MANUAL

For models equipped with SSD (solid state disk), stored data may be lost in the event of a malfunction due to the nature of SSD. You must back up important user data in external storage devices (USB HDD, memory, etc.). By the nature of this product, a malfunction in the mainboard may lead to the loss of stored data. Accordingly, you must back up important user data in external storage devices (USB HDD, memory, etc.).

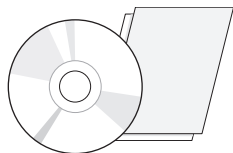
If you shut down the product before system loading is complete, it may not shut down properly. Shut down the product once system loading is complete. (System loading takes about 1 to 2 minutes to complete, but it may vary depending on the user environment.)

# ASSEMBLY AND PREPARING

## Product Composition

Please check whether all the components are included in the box before using the product. If there are any missing components, contact the retailer where you purchased the product.

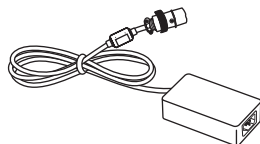
Note that the product and related components may look different from those shown here.



CD (Owner's Manual)/Regulatory Manual/  
Cards



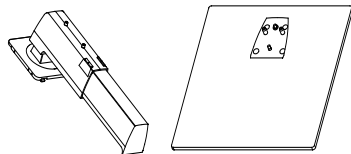
Power Cord



AC/DC Adaptor



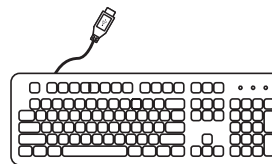
Cable Holder



Stand Body/Stand Base



Mouse (Only 24CN670WK, 24CN670NK,  
24CN670IK)



Keyboard (Only 24CN670WK, 24CN670NK, 24CN670IK)

**⚠ CAUTION**

- Always use genuine LG components to ensure safety and product performance.
- The product warranty will not cover damage or injury caused by the use of unauthorized components.
- It is recommend that use the supplied components.
- If you use generic cables not certified by LG, the screen may not display or there may be image noises.
- Need to use the authorized components about the below accessories. Unauthorized components may be cause of the damage and malfunction of the product.

Component	Standard
Power Cord	US – Approved Medical grade regulation Others – Approved country safety regulation

- The AC/DC adaptors and etc. except the upper components need to be used only supplied by manufacturer.

**ⓘ NOTE**

- The components may look different from those illustrated here.
- Without prior notice, all product information and specifications contained in this manual are subject to change to improve the performance of the product.
- To purchase optional accessories, visit an electronics store or an online shopping site, or contact the retailer from which you purchased the product.
- The power cord provided may differ depending upon the region.

**BIOS****⚠ CAUTION**

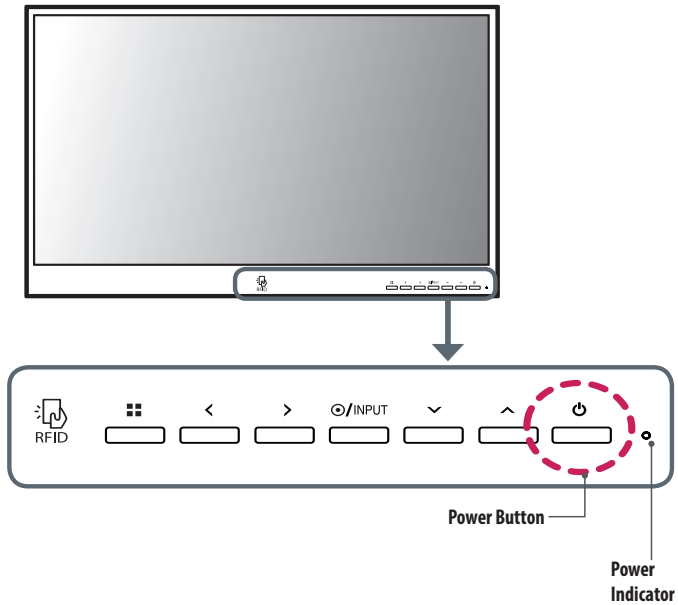
- BIOS Password: Without the registered password, access to the system will be denied. Write down and keep the password in a safe place.
- SSD Password: If you forgot SSD Password, you cannot restore the SSD.
- The replacement of SSD due to a forgotten SSD Password is not covered by warranty.

**Supported Software and Language pack install guide**

You can download the latest version for installation on the LG Electronics website ([www.lg.com](http://www.lg.com)).

- Language pack install guide (Only Windows 10 IoT Enterprise LTSB 2016 (RS1))

## Product and Button Description



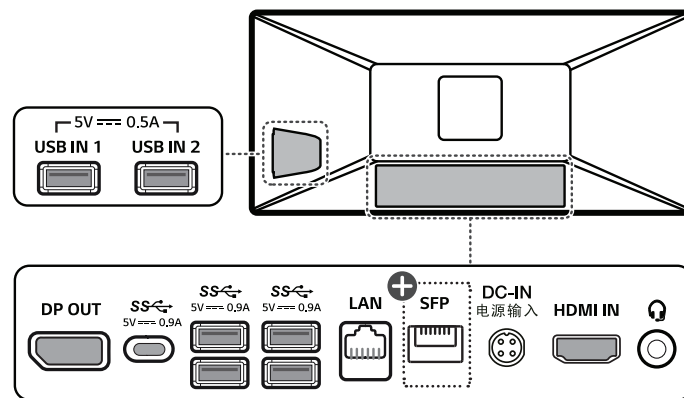
## Front Adjust Button Functions Information

Button	Description	
RFID	Tag the RFID card to run the RFID module.	
■ (Menu)	If the menu is inactive	Activates the main menu.
	If the menu is active	Exits the OSD menu when the button is pressed.
<	If the menu is inactive	Adjusts the volume level of the monitor.
	If the menu is active	Left directional key.
>	If the menu is inactive	Adjusts the volume level of the monitor.
	If the menu is active	Right directional key.
● /INPUT	If the menu is inactive	Change the input signals. The input signal (HDMI/PC) will be changed sequentially. * When the input signal is changed to PC, the PC is turned on. (Depending on the PC setting)
	If the menu is active	Selects and confirms menus or options.
∨	Down directional key.	
∧	Up directional key.	
(Power button)	HDMI input	Turn the monitor power on/off.
	PC input	Turn the PC power on/off.

## Power Indicator

Mode	LED Color
PC On	White
PC Sleep	Blinking
PC Off	Off

## Connectors



**+**: SFP supported models only.

**!** **CAUTION**

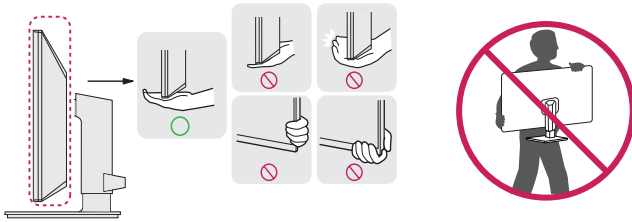
- Take caution when handling the product as the SFP port's protrusions are sharp and may injure your hand. (SFP supported models only.)



## Moving and Lifting the Monitor

When moving or lifting the monitor, follow these instructions to prevent the monitor from being scratched or damaged and to ensure safe transportation, regardless of its shape or size.

- Place the monitor in the original box or packing material before attempting to move it.
- Before moving or lifting the monitor, disconnect the power cord and all other cables.
- Hold the bottom and side of the monitor frame firmly. Do not hold the panel itself.
- When holding the monitor, the screen should face away from you to prevent it from being scratched.
- When transporting the monitor, do not expose the monitor to shock or excessive vibration.
- When moving the monitor, keep it upright and never turn the monitor on its side or tilt it sideways.



### ⚠ CAUTION

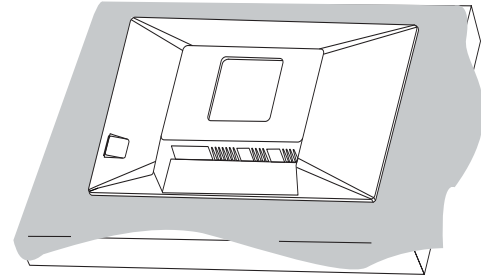
- Avoid touching the monitor screen as much as possible.
  - This may result in damage to the screen or some of the pixels used to create images.
- If you use the monitor panel without the stand base, its button may cause the monitor to become unstable and fall, resulting in damage to the monitor or human injury. In addition, this may cause the button to malfunction.

## Installing the Monitor

### Assemble the Stand

- Note that the product may look different from the illustrations in this user manual.

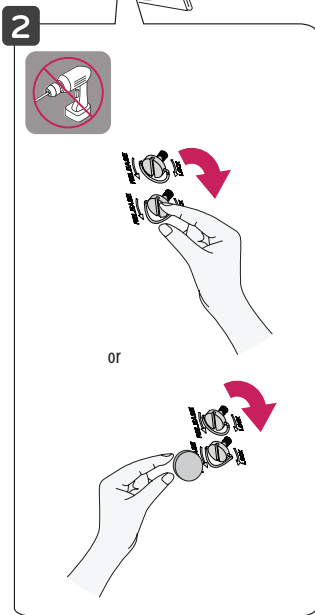
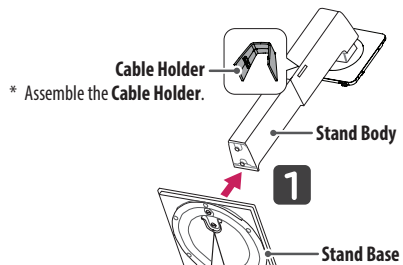
1



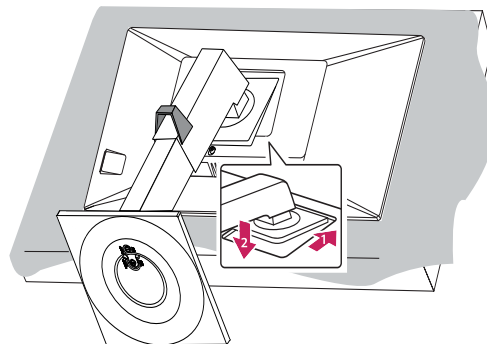
### ⚠ CAUTION

- To protect the screen from scratches, cover the surface with a soft cloth.

2

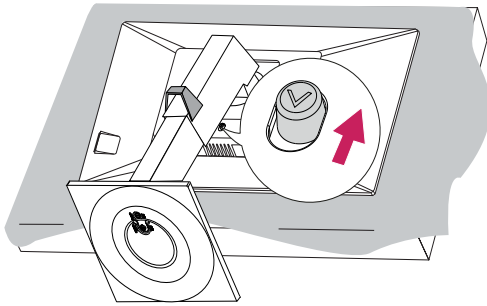


3



**NOTE**

- Press the stand until the button rises to maximum height.



**CAUTION**

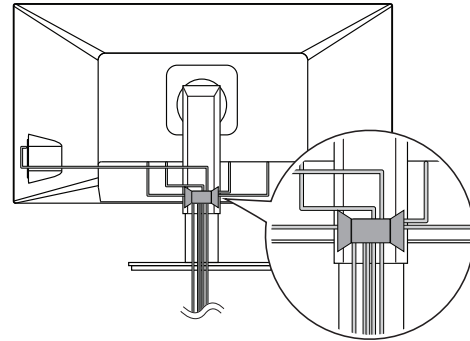
- Illustrations in this document represent typical procedures, so they may look different from the actual product.
- Do not use foreign substances (oil, lubricants) when assembling the product. (This may damage the product)
- Applying excessive force when tightening screws may cause damage to the monitor. Damage caused in this way will not be covered by the product warranty.
- Do not carry the monitor upside down by just holding the stand base. This may cause the monitor to fall off the stand and could result in personal injury.
- When lifting or moving the monitor, do not touch the monitor screen. The force applied to the monitor screen may cause damage to it.

**NOTE**

- The stand can be disassembled by following the assembly steps in the opposite order.

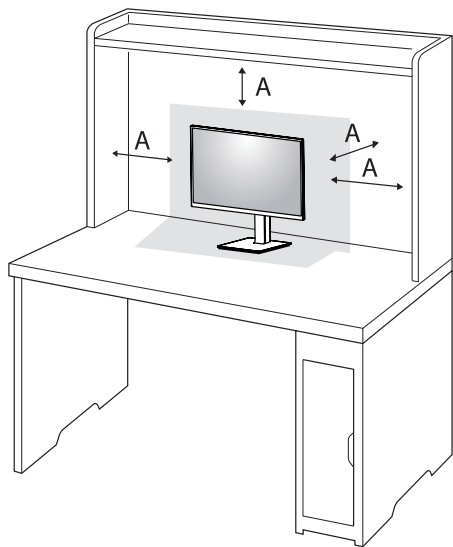
## Tidying up Cables

Arrange the cables using cable holders as shown in the illustration.



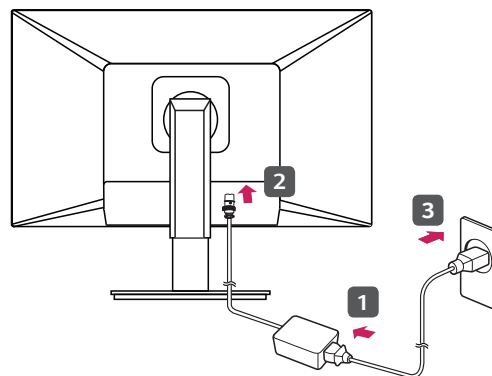
## Installing on a Table

- 1 Lift the monitor and place it on the table in an upright position. Place the monitor at least 100 mm (3.9 inches) away from the wall to ensure sufficient ventilation.



A: 100 mm (3.9 inches)

- 2 Connect the power cord to the monitor and then plug the power cord into the wall outlet.



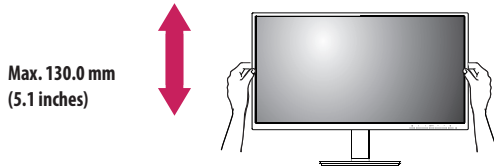
- 3 Press the  button on the front of the monitor to turn on the monitor.

### CAUTION

- Unplug the power cord before moving or installing the monitor. There is risk of electric shock.
- Make sure to use the power cord that is provided in the product package and connect it to a grounded power outlet.
- If you need another power cord, please contact your local dealer or the nearest retail store.

## Adjusting the Stand Height

- 1 Place the monitor mounted on the stand base in an upright position.
- 2 Handle the monitor with both hands for safety.



### WARNING

- When adjusting the screen height, do not place your hand on the stand body to avoid injury to your fingers.

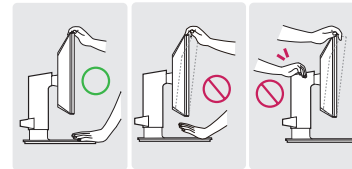
## Adjusting the Angle

- 1 Place the monitor mounted on the stand base in an upright position.
- 2 Adjust the angle of the screen.

The angle of the screen can be adjusted forward or backward from  $-5^{\circ}$  to  $35^{\circ}$  for a comfortable viewing experience.

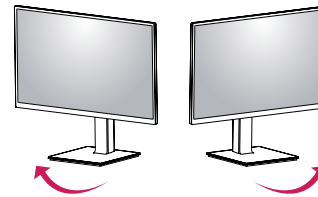
### WARNING

- To avoid injury to the fingers when adjusting the screen, do not hold the lower part of the monitor's frame as illustrated below.
- Be careful not to touch or press the screen area when adjusting the angle of the monitor.



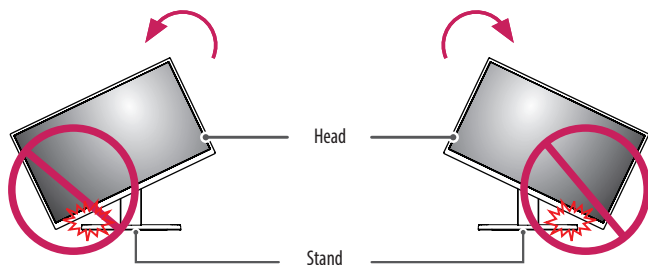
## Swivel stand

Swivel 355 degrees and adjust the angle of the Monitor set to suit your view.



## Pivot Feature

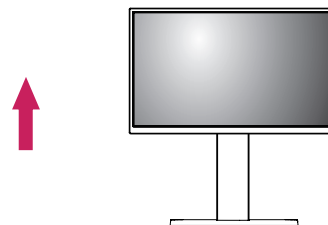
The pivot feature allows the monitor to rotate 90 degrees clockwise or counter-clockwise.



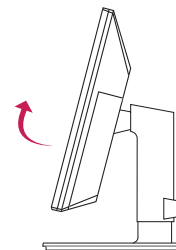
### WARNING

- To avoid scratching the stand base, do not use excessive force or speed when rotating the monitor using the pivot feature, and make sure that the stand does not make contact with the monitor.

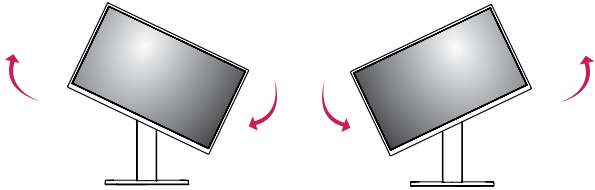
- 1 Raise the monitor up to the maximum height.



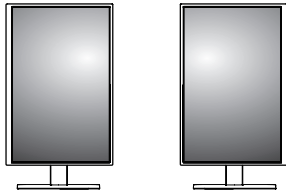
- 2 Adjust the angle of the monitor in the direction of the arrow as shown in the figure.



3 Rotate the monitor clockwise or counter-clockwise as shown in the figure.



4 Complete the installation by rotating the monitor 90° as shown in the figure.

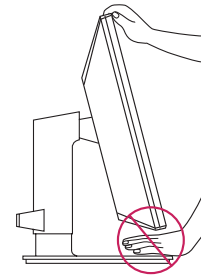


**NOTE**

- Auto Pivot feature of the display is not supported.
- The screen can be rotated easily using the screen pivot shortcut key provided with your Windows operating system. Note that some Windows versions and some graphics card drivers may use different settings for the screen pivot key or may not support the pivot key at all.
- Windows operating system screen pivot shortcut key.
  - 0°: Ctrl + Alt + keyboard up key (↑)
  - 90°: Ctrl + Alt + keyboard left key (←)
  - 180°: Ctrl + Alt + keyboard down key (↓)
  - 270°: Ctrl + Alt + keyboard right key (→)

**WARNING**

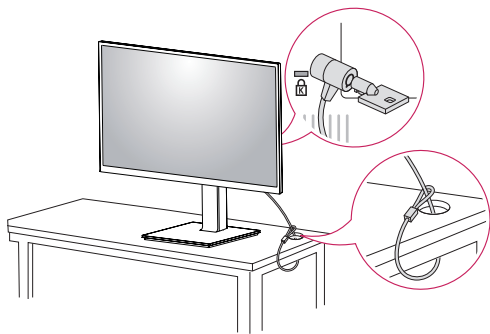
- Take care when rotating the monitor if the cable is connected.
- To avoid injury to your fingers, do not put them between the screen and the stand base when turning the monitor's screen.



## Using the Kensington Lock

For more information on installation and usage, refer to the Kensington lock owner's manual or visit the website at <http://www.kensington.com>.

Connect the monitor to a table using the Kensington security system cable.

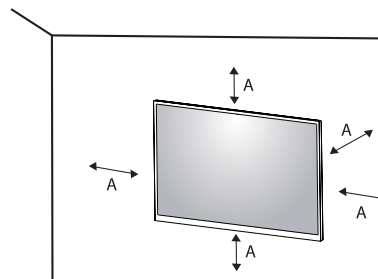


### ! NOTE

- The Kensington security system is optional. You can obtain optional accessories from most electronics stores.

## Installing on the Wall

Install the monitor at least 100 mm (3.9 inches) away from the wall and leave about 100 mm (3.9 inches) of space at each side of the monitor to ensure sufficient ventilation. Detailed installation instructions can be obtained from your local retail store. Alternatively, please refer to the manual for how to install and set up a tilting wall mounting bracket.

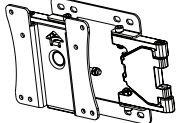


A: 100 mm (3.9 inches)



## Installing the Wall Mount Plate

This monitor meets the specifications for the wall mount plate or other compatible devices.  
To install the monitor to a wall, attach a wall mounting bracket (optional) to the back of the monitor.  
Make sure that the wall mounting bracket is securely fixed to the monitor and to the wall.

<b>Wall Mount</b>	100 mm x 100 mm (3.9 inches x 3.9 inches)
<b>Standard screw</b>	M4 x L10
<b>Number of screws</b>	4
<b>Wall Mount Plate (Optional)</b>	LSW149 

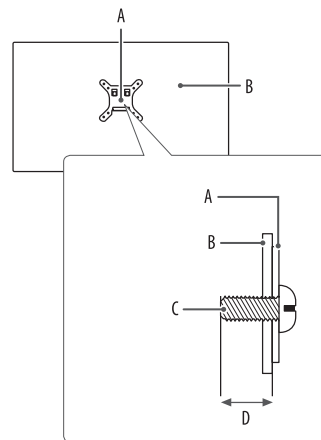
### ! NOTE

- A non-VESA standard screw may damage the product and cause the monitor to fall. LG Electronics is not liable for any accidents relating to the use of non-standard screws.
- The wall mount kit includes the installation guide and all necessary parts.
- The wall mounting bracket is optional. You can obtain optional accessories from your local dealer.
- The length of the screw may differ for each wall mounting bracket. If you use screws longer than the standard length, it may damage the inside of the product.
- For more information, please refer to the user manual for the wall mounting bracket.
- Be careful not to apply too much force while mounting the wall mount plate as it may cause damage to the screen.
- Remove the stand before installing the monitor on a wall mount by performing the stand attachment in reverse.

**⚠ CAUTION**

- Unplug the power cord before moving or installing the monitor to avoid electric shock.
- Installing the monitor on the ceiling or on a slanted wall may result in the monitor falling off, which could lead to injury. Use an authorized LG wall mount and contact the local dealer or qualified personnel.
- To prevent injury, this apparatus must be securely attached to the wall in accordance with the installation instructions.
- Applying excessive force when tightening screws may cause damage to the monitor. Damage caused in this way will not be covered by the product warranty.
- Use the wall mounting bracket and screws that conform to VESA standards. Damage caused by the use or misuse of inappropriate components will not be covered by the product warranty.

- When measured from the back of the monitor, the length of each installed screw must be 8 mm (0.3 inches) or less.



A: Wall Mount Plate

B: Back of the Monitor

C: Standard screw

D: Max. 8 mm (0.3 inches)

# USING THE MONITOR

- Illustrations in this manual may differ from the actual product.

Press the (●/INPUT) button and then select the input option.

## ⚠ CAUTION

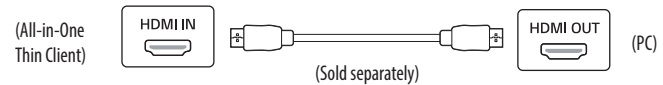
- Always use genuine LG components to ensure safety and product performance.
- Do not press the screen for a prolonged time. This may cause image distortion.
- Do not display a still image on the screen for a prolonged time. This may cause image retention. Use a screensaver if possible.
- When connecting the power cord to the outlet, use a grounded (3-hole) power strip or a grounded power outlet.
- The monitor may flicker when turned on in an area where the temperature is low. This is normal.
- Sometimes red, green, or blue spots may appear on the screen. This is normal.

## Connecting to a PC

- This monitor supports the \*Plug and Play feature.
- \* Plug and Play: A feature that allows you to add a device to your computer without having to reconfigure anything or install any manual drivers.

### HDMI Connection

Transmits digital video and audio signals from your PC to the monitor.



## ⚠ CAUTION

- Using a DVI to HDMI/DP (DisplayPort) to HDMI cable may cause compatibility issues.
- Use a certified cable with the HDMI logo attached. If you do not use a certified HDMI cable, the screen may not display or a connection error may occur.
- Recommended HDMI cable types
  - High Speed HDMI®/™ cable
  - High Speed HDMI®/™ cable with Ethernet

## Connecting monitor

### DisplayPort Connection

Transmits the PC's digital video and audio signals to the monitor. Connect your monitor which is supported DP using the DisplayPort cable.

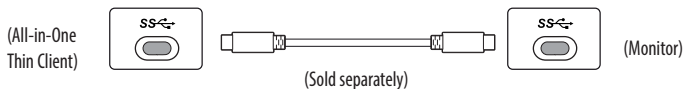


#### ! NOTE

- There may be no video or audio output depending on the DP (DisplayPort) version of the PC.

### USB-C connection

Transmits digital video and audio signals from your PC to the monitor.



#### ! NOTE

- DP Alternate Mode (DP over USB-C) are supported via USB-C Port.
- Features may not work properly depending on the connected device's specifications and the environment.
- Connect Adapter to supply power to the Monitor.

## Connecting LAN

### LAN connection

Connect the router or switch to the monitor.

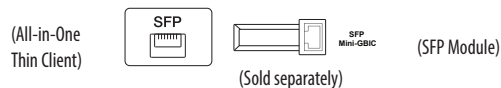
#### ! NOTE

- The LAN cable is sold separately.
- The following LAN cable type can be used: Standard: IEEE 802.3 ETHERNET
- Connect the LAN cable and the peripheral devices to use the cloud monitor.



### SFP connection

(SFP supported models only.)



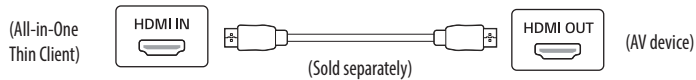
#### ! NOTE

- Only supports 1 Gbps module. (155 Mbps, 10 Gbps (SFP+) are not supported)
- When you choose the SFP module, refer to the compatibility list by SFP vendor.
- Use the same SFP module to connect both devices.
- Devices are sold separately.

## Connecting AV Devices

### HDMI Connection

HDMI transmits digital video and audio signals from your AV device to the monitor.



#### ! NOTE

- Using a DVI to HDMI/DP (DisplayPort) to HDMI cable may cause compatibility issues.
- Use a certified cable with the HDMI logo attached. If you do not use a certified HDMI cable, the screen may not display or a connection error may occur.
- Recommended HDMI cable types
  - High Speed HDMI<sup>®</sup>/TM cable
  - High Speed HDMI<sup>®</sup>/TM cable with Ethernet

## Connecting Peripherals

### USB connection - PC

Peripheral devices connected to the USB IN port can be controlled from the PC.

#### ! NOTE

- It is recommended you install all Windows Updates to keep your Windows up-to-date before connecting to the product for use.
- Peripheral devices are sold separately.
- A keyboard, mouse, or USB device can be connected to the USB port.
- The charging speed may vary depending on the device.

#### ⚠ CAUTION

Cautions when using a USB device.

- A USB device with an automatic recognition program installed, or that uses its own driver, may not be recognized.
- Some USB devices may not be supported or may not work properly.
- It is recommended to use a USB hub or hard disk drive with power supplied. (If the power supply is not adequate, the USB device may not be recognized properly.)

## Connecting Headphones and Microphone

Connect peripherals to the monitor via the headphones and Microphone port.

### NOTE

- Peripheral devices are sold separately.
- Depending on the audio settings of the PC and external device, headphones and speaker functions may be limited.
- If you use angled earphones, it may cause a problem with connecting another external device to the monitor. Therefore, it is recommended to use straight earphones.



Angled



Straight  
(Recommend)

## USING THE RFID FUNCTION

- 24CN670 series has embedded RFID card reader that can read 125 kHz and 13.56 MHz RFID card.
- RFID card reader supports most common RFID cards, but some types of cards may need configuration before first use. (You can search supported card list and download pcProxConfig program from the LGE website.)
- You can tag the RFID card/badge within 2.5 cm (0.9 inches) distance from the RFID logo on the front of monitor.

### CAUTION

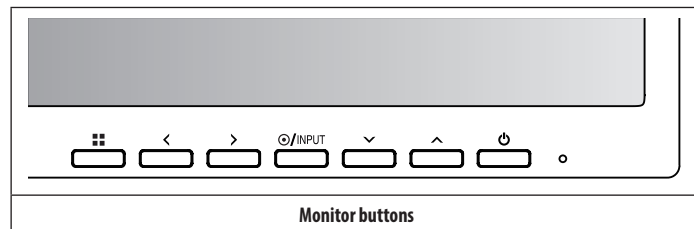
- Placing magnetic devices around RFID card readers may affect recognition.
- The force applied to the RFID logo on the front of monitor may erase logo and cause damage to it.

## USER SETTINGS

### NOTE

- Your monitor's OSD (On Screen Display) may differ slightly from that shown in this manual.

## Activating the Main Menu



### Menu Settings

- 1 To view the OSD menu, press the button and then enter the Settings.
- 2 Use the / / / to adjust the options.
- 3 To return to the upper menu or set other menu items, press the or button.
- 4 If you want to exit the OSD menu, press the button.

The applicable setting options are as shown below.



[Quick Settings]



[Input]



[Picture]



[Sound]



[General]

## [Quick Settings]

### ☰ > [Quick Settings]

- [Brightness]: Adjusts the brightness of the screen.
- [Contrast]: Adjusts the contrast of the screen.
- [Volume]: Adjusts the volume level.
  - You can adjust [Mute]/[Unmute] by √ key in the [Volume] menu.
- [Color Temp]: Set your own color temperature.
  - [Custom]: The user can customize the red, green and blue color.
  - [Warm]: Sets the screen color to a reddish tone.
  - [Medium]: Sets the screen color to between a red and blue tone.
  - [Cool]: Sets the screen color to a bluish tone.

## [Input]

### ☰ > [Input]

- [Input List]: Selects the input mode.
- [Aspect Ratio]: Adjusts the aspect ratio of the screen.
  - [Full Wide]: Displays the video in widescreen, regardless of the video signal input.
  - [Original]: Displays video according to the aspect ratio of the video signal input.

### ! NOTE

- The ratio is disabled in the interlaced signal.
- The display may look the same for [Full Wide], [Original] options at the recommended resolution.

## [Picture]

### ☰ > [Picture] > [Picture Mode]

- [Custom]: Allows the user to adjust each element. The color mode of the main menu can be adjusted.
- [Reader]: Optimizes the screen for reading documents.
- [Photo]: Optimizes the screen to view photos.
- [Color Weakness]: This mode is for users who cannot distinguish between red and green. It enables users with color weakness to easily distinguish between the two colors.

This is subsidiary for color weakness user. Therefore if you feel uncomfortable with the screen, please turn off this function.

This function can't distinguish some colors in some images.

**■ ■ > [Picture] > [Picture Adjust]**

- [Brightness]: Adjusts the brightness of the screen.
- [Contrast]: Adjusts the contrast of the screen.
- [Sharpness]: Adjusts the sharpness of the screen.
- [SUPER RESOLUTION+]: Because this is a function to increase the sharpness of low resolution pictures, it is not recommended to use the function for normal text or for desktop icons. Doing so may result in unnecessarily high sharpness.
  - [High]: Optimizes the screen for crystal clear images.
  - [Middle]: Optimizes the screen for comfortable viewing, with images at the middle level between the low and high modes.
  - [Low]: Optimizes the screen for smooth and natural images.
  - [Off]: Displays in the most common setting. Disables [SUPER RESOLUTION+].
- [Black Level]: Sets the offset level (for HDMI only).  
Offset: as a reference for a video signal, this is the darkest color the monitor can display.
  - [High]: Keeps the current contrast ratio of the screen.
  - [Low]: Lowers the black levels and raises the white levels from the current contrast ratio of the screen.
- [DFC]: Adjusts the brightness automatically according to the screen.

- [Response Time]: Sets a response time for displayed pictures based on the speed of the screen. For a normal environment, it is recommended that you use [Fast]. For a fast-moving picture, it is recommended that you use [Faster]. Setting to [Faster] may cause image sticking.
  - [Faster]: Sets the response time to [Faster].
  - [Fast]: Sets the response time to [Fast].
  - [Normal]: Sets the response time to [Normal].
  - [Off]: Does not use the response time improvement feature.
- [Black Stabilizer]: You can control the black contrast to have better visibility in dark scenes. Increasing the [Black Stabilizer] value brightens the low gray level area on the screen. (You can easily distinguish objects on dark screens.) Reducing the [Black Stabilizer] value darkens the low gray level area and increases the dynamic contrast on the screen.



**☰ > [Picture] > [Color Adjust]**

- [Gamma]
  - [Mode 1], [Mode 2], [Mode 3]: The higher the gamma value, the darker the image becomes. Likewise, the lower the gamma value, the lighter the image becomes.
  - [Mode 4]: If you do not need to adjust the gamma settings, select [Mode 4].
- [Color Temp]: Set your own color temperature.
  - [Custom]: The user can customize the red, green and blue color.
  - [Warm]: Sets the screen color to a reddish tone.
  - [Medium]: Sets the screen color to between a red and blue tone.
  - [Cool]: Sets the screen color to a bluish tone.
- [Red], [Green], [Blue]: You can customize the picture color using [Red], [Green], and [Blue] colors.

**☰ > [Picture] > [Picture Reset]**

- [Do you want to reset your settings?]:
  - [No]: Cancel the reset.
  - [Yes]: Returns to the default settings.

**[Sound]****☰ > [Sound]**

- [Volume]: Adjusts the volume level.
  - You can adjust [Mute]/[Unmute] by  $\vee$  key in the [Volume] menu.
- [MaxxAudio]
  - [On]: MaxxAudio® by Waves, recipient of a Technical GRAMMY Award® is a suite of studio-quality sound tools for a superior listening experience.
  - [Off]: Disables the [MaxxAudio] function.

## [General]

### ☰ > [General]

- [Language]: Sets the menu screen to the desired language.
- [SMART ENERGY SAVING]: Conserve energy by using luminance compensation algorithm.
  - [High]: Saves energy using the high-efficiency [SMART ENERGY SAVING] feature.
  - [Low]: Saves energy using the low-efficiency [SMART ENERGY SAVING] feature.
  - [Off]: Disables the feature.
  - The value of energy saving data may differ depending on panel and panel suppliers.
  - If you select the option of [SMART ENERGY SAVING] is [High] or [Low], monitor luminance become higher or lower depend on source.
- [Automatic Standby]: If there is no operation on the monitor for a certain period of time, the monitor will automatically switch to standby mode.
- [OSD Lock]: This feature disables the configuration and adjustment of menus.
  - Deactivates all functions except [Brightness], [Contrast], [Volume], [Input List], [Information] and [OSD Lock] menu.
- [Information]: The following display information will be shown; [Total Power On Time], [Resolution].

### ☰ > [General] > [Reset]

- [Do you want to reset your settings?]:
  - [No]: Cancel the reset.
  - [Yes]: Returns to the default settings.

# TROUBLESHOOTING

<b>Nothing is displayed on the screen.</b>	
Is the monitor's power cord plugged in?	<ul style="list-style-type: none"><li>• Check if the power cord is correctly plugged into the power outlet.</li></ul>
Is the power LED on?	<ul style="list-style-type: none"><li>• Check the power cable connection and press the power button.</li></ul>
Is the power on and the power LED displaying white?	<ul style="list-style-type: none"><li>• Check that the connected input is enabled. (■&gt; [Input])</li></ul>
Is the [No Signal] message being displayed?	<ul style="list-style-type: none"><li>• This is displayed when the signal cable between the PC and the monitor is missing or disconnected. Check the cable and reconnect it.</li></ul>
Is the [Out of Range] message being displayed?	<ul style="list-style-type: none"><li>• This occurs when signals transferred from the PC (graphics card) are out of the horizontal or vertical frequency range of the monitor. Please see the Product Specification section of this manual to set the appropriate frequency.</li></ul>
<b>Screen display is unstable and shaky. / Images displayed on the monitor leave shadow trails.</b>	
Did you select the appropriate resolution?	<ul style="list-style-type: none"><li>• If the selected resolution is HDMI 1080i 60/50 Hz (interlaced), the screen may be flickering. Change the resolution to 1080p or the recommended resolution.</li><li>• Not setting the graphics card to the recommended (optimal) resolution may result in blurred text, a dimmed screen, a truncated display area or misalignment of the display.</li><li>• The setting methods may be different depending on the computer or operating system, and some resolutions may not be available depending on the performance of the graphics card. If this is the case, contact the manufacturer of the computer or graphics card for assistance.</li></ul>
Does image sticking occur even when the monitor is turned off?	<ul style="list-style-type: none"><li>• Displaying a still image for a prolonged time may cause damage to the screen, resulting in the retention of the image.</li><li>• To extend the lifetime of the monitor, use a screensaver.</li></ul>
Are there spots on the screen?	<ul style="list-style-type: none"><li>• When using the monitor, pixilated spots (red, green, blue, white, or black) may appear on the screen. This is normal for an LCD screen. It is not an error, nor is it related to the monitor's performance.</li></ul>

**Some features are disabled.**

- |  |   |
|--|---|
| Are some functions not available when you press the Menu button? | <ul style="list-style-type: none"> <li>The OSD is locked. Disable [OSD Lock] in [General].</li> </ul> |
|--|---|

**Do you see an "Unrecognized monitor, Plug and Play (VESA DDC) monitor found" message?**

- |  |  |
|--|--|
| Have you installed the display driver? | <ul style="list-style-type: none"> <li>Be sure to install the display driver from our website: <a href="http://www.lg.com">http://www.lg.com</a>.</li> <li>Make sure to check if the graphics card supports Plug and Play function.</li> </ul> |
|--|--|

**No sound from the headphone port.**

- |                                     |  |
|-------------------------------------|--|
| Are images displayed without sound? | <ul style="list-style-type: none"> <li>Make sure that the headphone port connections are made properly.</li> <li>Try increasing the volume with keys.</li> <li>Set the audio output of the PC to the monitor you are using. (The settings may differ depending on the operating system (OS) you use.)</li> </ul> |
|-------------------------------------|--|

**RFID card is not working.**

- |   |  |
|---|--|
| Did you tag the RFID card on the RFID logo  on the front of monitor? | <ul style="list-style-type: none"> <li>Check if the RFID card supports RFID reader.</li> <li>Turn off the monitor and turn it on again.</li> </ul> |
|---|--|

# PRODUCT SPECIFICATION

The product specifications are subject to change without prior notice for product improvements.

“~” refers to alternating current (AC), “—” refers to direct current (DC).

<b>Color Depth</b>	8-bit color is supported.		
<b>Resolution</b>	Max Resolution	1920 x 1080 @ 75 Hz	
	Recommended Resolution	1920 x 1080 @ 60 Hz	
<b>Connectors</b>	DP OUT, USB IN (5 V—0.5 A) X 2, USB IN (5 V—0.9 A) X 5, LAN, DC-IN 电源输入, HDMI IN, ⌂, SFP(SFP supported models only.)		
<b>Power Sources</b>	Power Rating	19 V—6.32 A	
	Power Consumption	Operating Mode: - MNT only: 23 W (Typical)* - With PC: 28 W (Typical)* Sleep Mode: ≤ 1.3 W ** Off Mode: ≤ 1.2 W **	
<b>Environmental Conditions</b>	Operating Conditions	Temperature	0 °C to 40 °C (32 °F to 104 °F)
		Humidity	0 % to 80 %
		Pressure	700 hPa to 1060 hPa
	Storing Conditions	Temperature	-20 °C to 60 °C (-4 °F to 140 °F)
		Humidity	0 % to 85 %
		Pressure	500 hPa to 1060 hPa
<b>AC/DC Adapter</b>	Manufacturer: Asian Power Devices Inc. (APD) Model: DA-120D19		
	Input: 100-240 V~ 50-60 Hz, 1.8-0.7 A Output: 19 V—6.32 A Classification by protection type against Electric Shock: Class I		

<b>Dimensions</b>	Monitor Size (Width x Depth x Height)		
	With Stand	Min.	553.8 x 240 x 382.9 (mm) 21.8 x 9.4 x 15.0 (inches)
		Max.	553.8 x 240 x 512.9 (mm) 21.8 x 9.4 x 20.1 (inches)
	Without Stand		553.8 x 63 x 353.3 (mm) 21.8 x 2.4 x 13.9 (inches)
<b>Weight (Without Packaging)</b>	With Stand	6.20 kg (13.6 lbs)	
	Without Stand	4.05 kg (8.9 lbs)	

\* The Operating Mode of Power Consumption is measured with LGE test standard. (Full White pattern, Maximum resolution)

\* The Power Consumption level can be different by operating condition and monitor setting.

\*\* The PC Sleep mode and Off mode is measured with monitor outgoing condition.

## Support Mode

### HDMI (Preset Mode - PC)

Resolution	Horizontal Frequency (kHz)	Vertical Frequency (Hz)	Polarity (H/V)	Remarks
640 x 480	31.469	59.94	-/-	
640 x 480	37.5	75	-/-	
720 x 400	31.468	70.08	-/+	
720 x 480	31.47	59.94	+/+	
800 x 600	37.879	60.317	+/+	
800 x 600	46.875	75.0	+/+	
1024 x 768	48.363	60.0	-/-	
1024 x 768	60.023	75.029	+/+	
1152 x 864	67.500	75.000	+/+	
1280 x 720	45	60	+/+	
1280 x 800	49.702	60	-/+	
1280 x 1024	63.981	60.023	+/+	
1280 x 1024	79.976	75.035	+/+	
1400 x 1050	65.317	59.978	-/+	
1440 x 900	55.935	59.887	-/+	
1600 x 900	60.000	60.000	+/+	
1680 x 1050	65.290	59.954	-/+	
1920 x 1080	67.50	60	+/+	
1920 x 1080	83.89	74.97	+/+	

## HDMI Timing (Video)

Resolution	Horizontal frequency (KHz)	Vertical frequency (Hz)	Remarks
480p	31.5	60	
576p	31.25	50	
720p	37.5	50	
720p	45	60	
1080p	56.25	50	
1080p	67.5	60	Recommend





WARNING: This equipment is compliant with Class A of CISPR 32. In a residential environment this equipment may cause radio interference.

The model and serial number of the product are located on the back and on one side of the product. Record them below in case you ever need service.

Model

---

Serial No.

---

**Supplier's Declaration of Conformity**

Trade Name	LG
Responsible Party	LG Electronics USA, Inc.
Address	111 Sylvan Avenue, North Building, Englewood Cliffs, NJ 07632
E-mail	lg.environmental@lge.com