

LIVE STREAMER AX310

User Manual

Technical Specifications	3
System Requirements	3
Hardware I/O	4
Connections	5
Next-Gen console	5
Nintendo Switch	5
Dual PC	6
Dual PC (With in-game Chat)	6
Download Creator Central App	7
Windows	7
macOS	8
Creator Central Setup	9
AVerMedia Account Setup	9
Creator Central Log in	10
User Interface (by Section)	10
Windows 10 Audio Routing Settings	11
macOS Audio Routing Settings	14
Audio Routing Table	16
Hardware Settings	18
Audio Mixer settings	20
Microphone Settings	20
Single Mix Settings	23
Dual Mix Settings	26
Control Panel Setup (Hotkeys & Widgets)	29
OBS Setup	33
OBS Websocket Plugin	34
For Windows	34
For macOS	34
SLOBS Setup	36
SLOBS Token Plugin	37
Voicemod Plugin & Setup	38
Creator Central Setup	41

Streaming Voicemod Sound with OBS	41
Streaming Voicemod Sound with OBS and Other Apps (e.g. Discord)	43
Monitoring	44
Hotkey & Widget Profiles	45
Audio Profiles	46
Feedback	48

Technical Specifications

Interface	USB 2.0, Type-B (Driver Required)
Mic In	XLR (Balanced) / 6.3 mm (Single-end) x1
Console In	Optical In (Toslink) x1
Computer Inputs	Digital Tracks x 3
Headphone Out and Line Out	3.5 mm TRS, Stereo
Output Mix	Creator Mix / Audience Mix
Sampling Rate	Up to 96 kHz, 24 bits
Microphone Effect	Noise Gate, Reverb, Compressor, Equalizer
Frequency Response	10 Hz to 20 kHz
Dynamic Response	114 dB
Screen Panel	5" IPS Touch Panel
Widgets	Interactive & Customizable Grid
Rotational Encoders	6 (Physical inputs x 3 / Digital inputs x 3)
Lighting	RGB
Power Switch	Yes
Power Inputs	Standard 12V DC, Center Negative, 1.5 A
Power Consumption	< 7 W
Dimensions	Without Stand: 21.7 x 14.5 x 6.1 cm (5.7 x 8.5 x 2.4 in) With Stand: 21.7 x 14.5 x 9.4 cm (5.7 x 8.5 x 3.7 in)
Weight	Without Stand: 0.699 kg (24.66 oz) With Stand: 0.843 kg (29.74 oz)

Note:

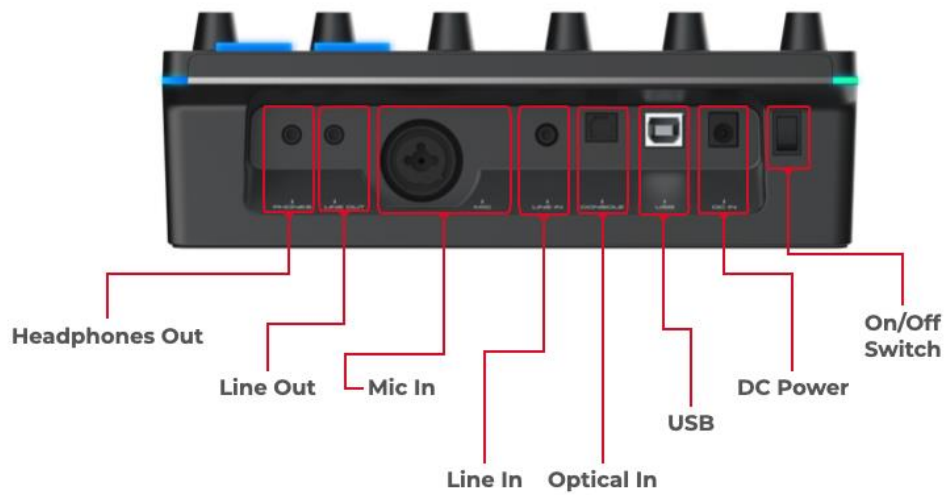
- Phantom Power +48V, switchable via Creator Central app

System Requirements

Windows: Windows 10 20H2 (64 bit) and above

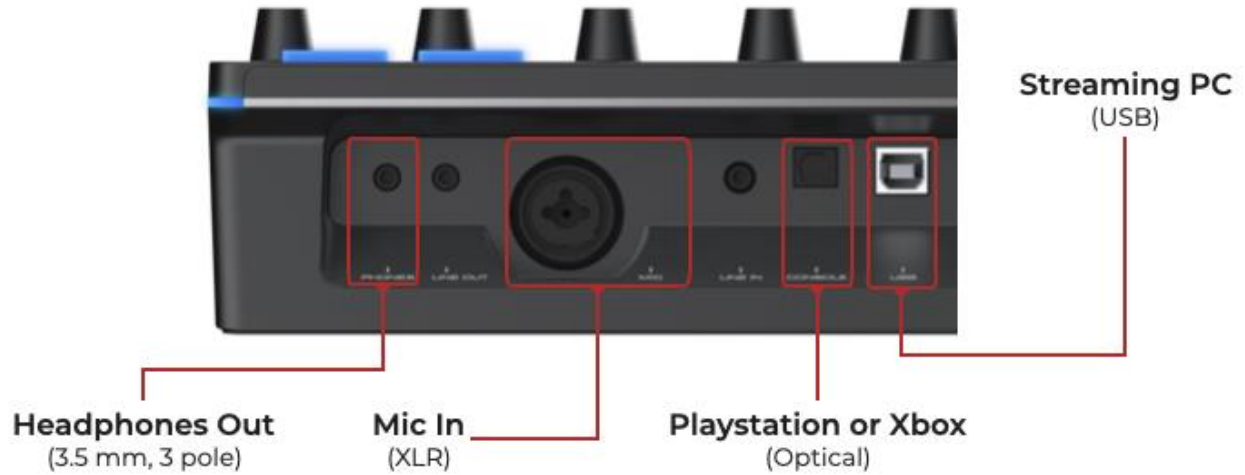
Mac: macOS 10.15 and above

Hardware I/O

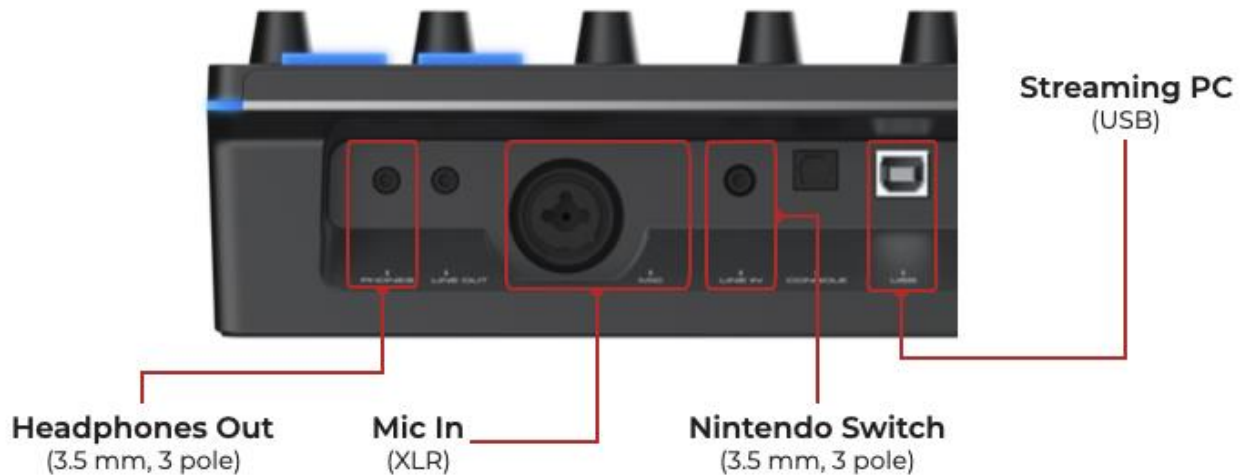


Connections

Next-Gen console¹

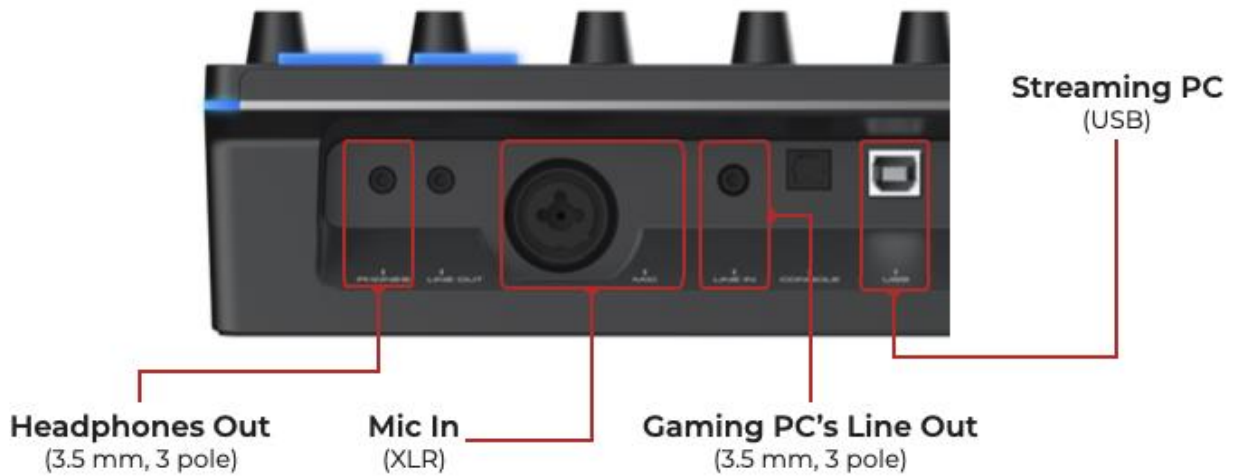


Nintendo Switch

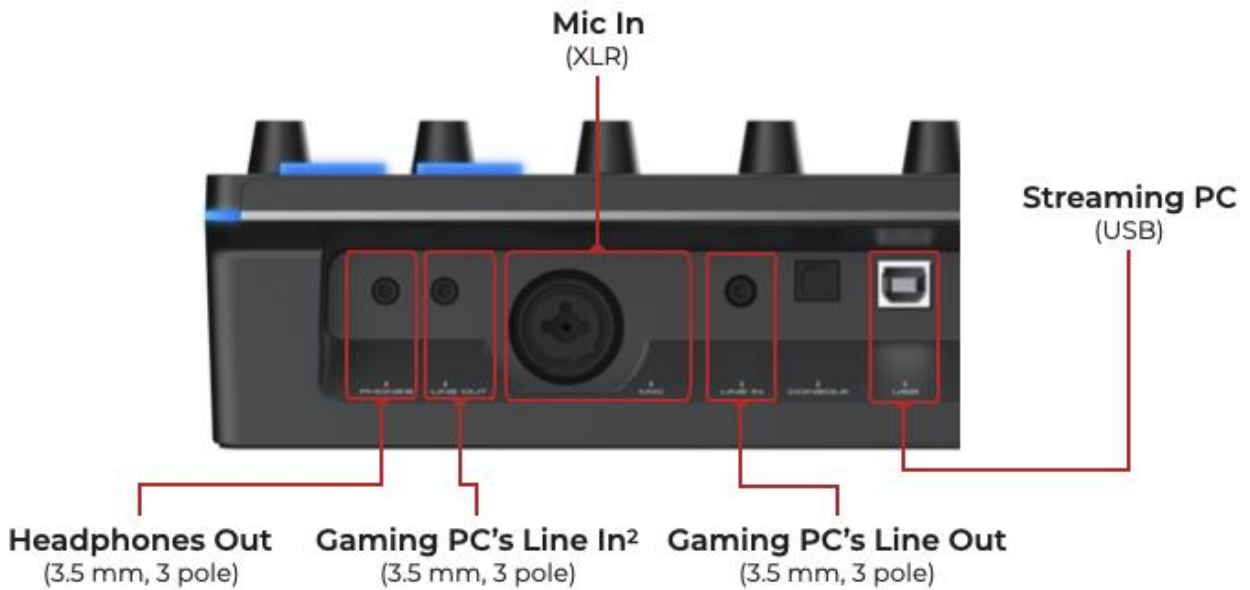


¹ - PS5, Xbox X/S Series requires an HDMI to Optical adapter, sold separately.
- Optical output settings must be set to Linear PCM or uncompressed stereo. Optical in doesn't support compressed audio signals, 5.1 ch or 7.1 ch.

Dual PC



Dual PC (With in-game Chat)²



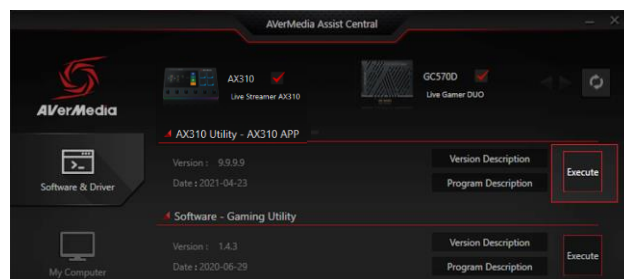
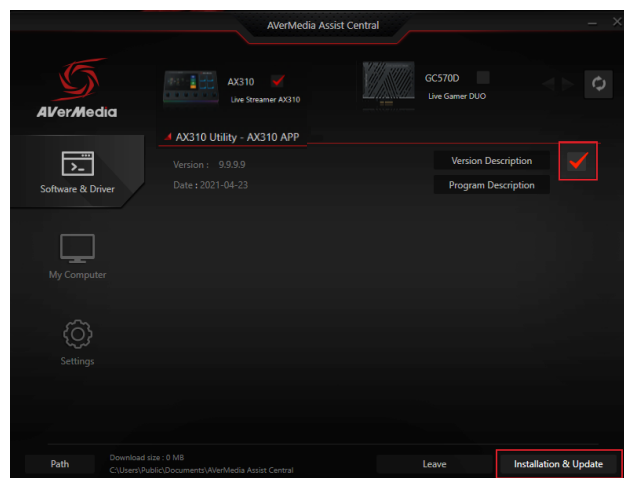
² Creator Central "LINE OUT" must be set to "Chat Mic", refer to Page 17.

Download Creator Central App

Windows

[Assist Central Download Link](#)

Download and run Assist Central. It will detect your AX310 and allow you to download everything you need to install the Creator Central app.

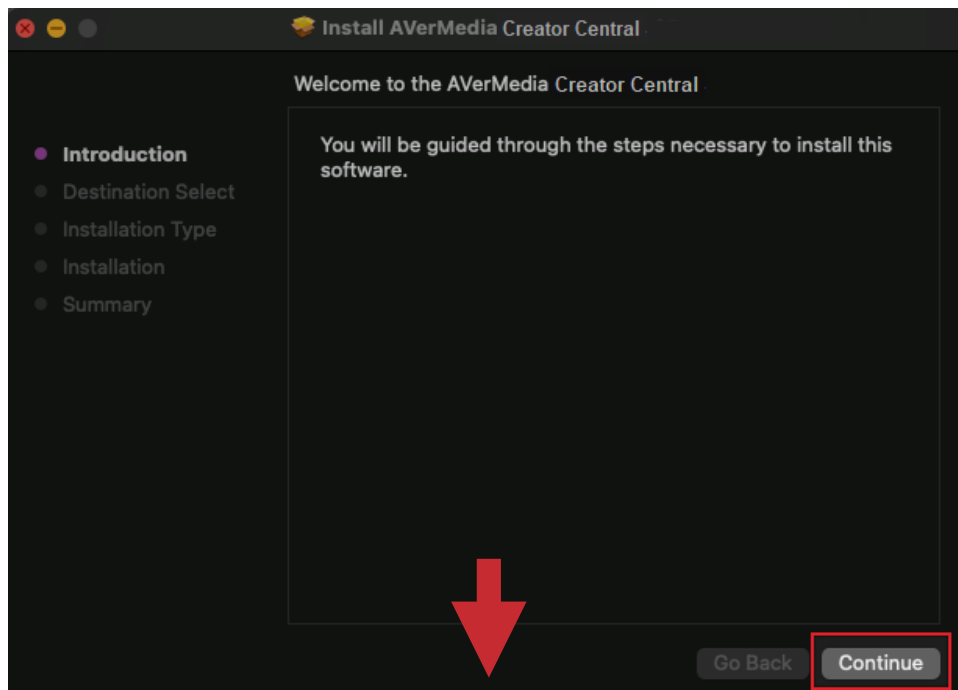


After downloading the file Select the button “Execute” and it will start installing the software > update the firmware > Install driver. Once it's done, you will need to restart your system.

macOS

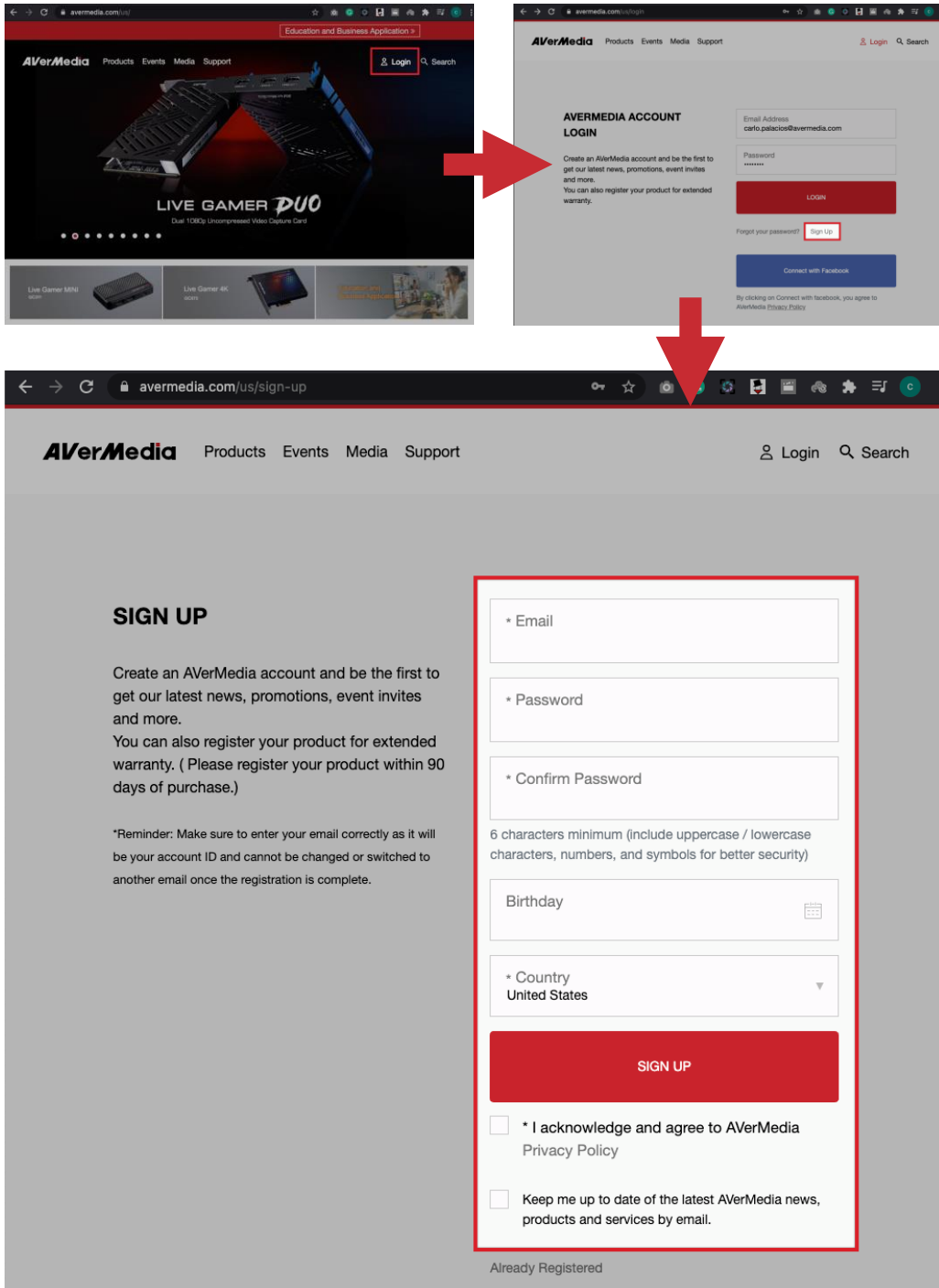
[Download link for macOS](#)

Unzip the .zip file and open the .pkg file, it will install Creator Central, update firmware and install drivers.



Creator Central Setup

AVerMedia Account Setup



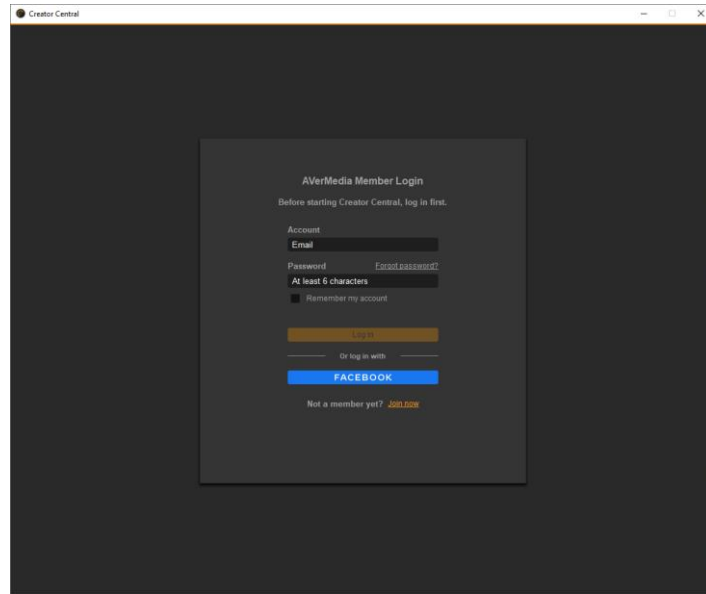
The first screenshot shows the AVerMedia homepage with a navigation menu (Products, Events, Media, Support) and a 'Login' button highlighted in a red box. Below the navigation is a banner for 'LIVE GAMER DUO' and several product thumbnails.

The second screenshot shows the 'AVERMEDIA ACCOUNT LOGIN' page. It includes fields for 'Email Address' (carlo.palacios@avermidia.com) and 'Password', a 'LOGIN' button, and a 'Sign Up' link highlighted in a red box. There is also a 'Connect with Facebook' button and a 'Forgot your password?' link.

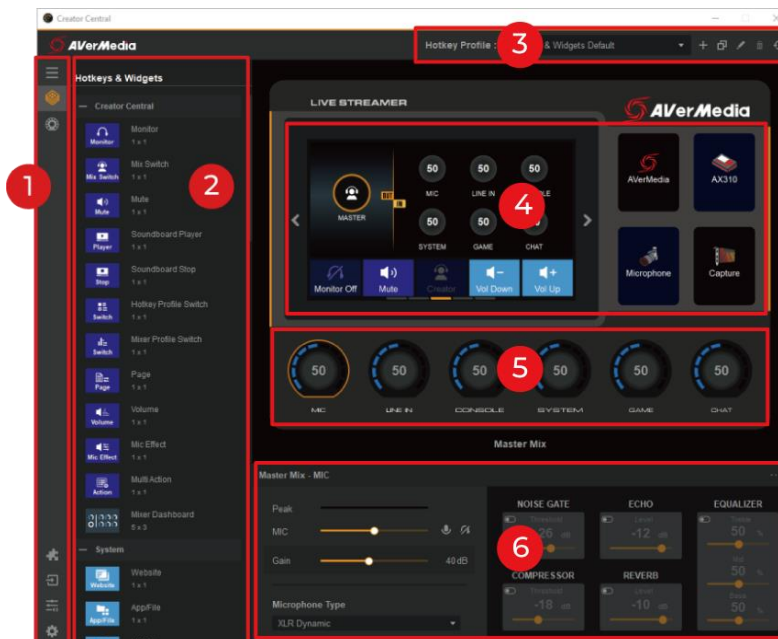
The third screenshot shows the 'SIGN UP' page. The registration form is highlighted with a red border and includes fields for 'Email', 'Password', 'Confirm Password', 'Birthday', and 'Country' (set to 'United States'). A red 'SIGN UP' button is at the bottom of the form. Below the form are two checkboxes: one for agreeing to the Privacy Policy and another for receiving email updates. A link for 'Already Registered' is at the bottom.

Creator Central Log in

Once you have created your account you can go ahead and sign in on the Creator Central app. As we keep developing Creator Central, we will be adding features that will be linked to this account. After logging in, let's make sure the audio settings on your PC or Mac are ready to go.



User Interface (by Section)

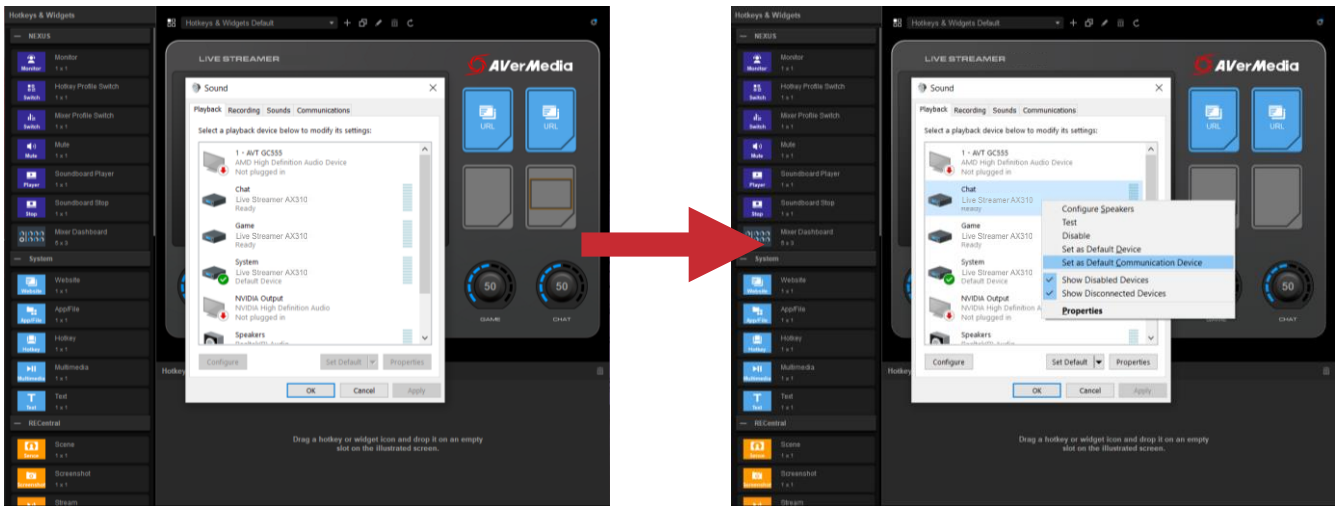


1. Sidebar: Quick access to functions, such as Hotkeys & Widgets, Audio Mixer, Widget Store, Settings, etc.
2. Display section for the Hotkeys & Widgets list or Audio Mixer controls along with Audio Routing Table.
3. Add, copy, and edit hotkey and mixer profiles.
4. Customizable control panel for hotkeys, widgets, and function buttons.
5. Audio track (6 knobs) volume level indicators.
6. Knob, hotkey, or widget configurations.

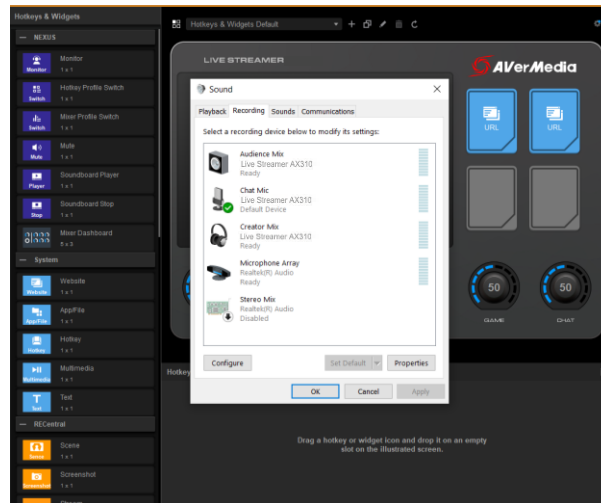
Windows 10 Audio Routing Settings

Make sure you have updated to Windows 10 20H2 version, to avoid any hotkey mapping issues.

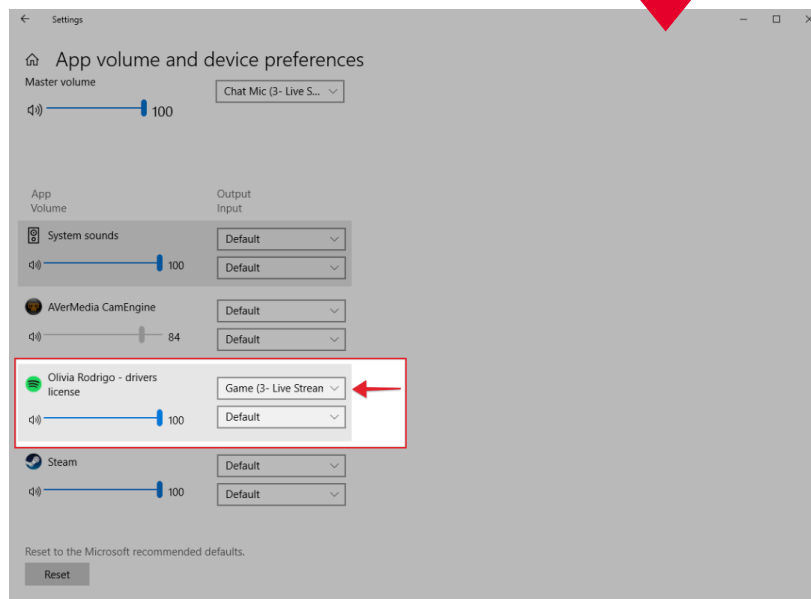
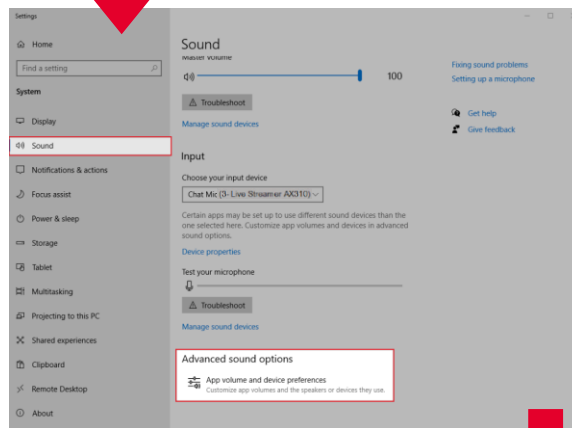
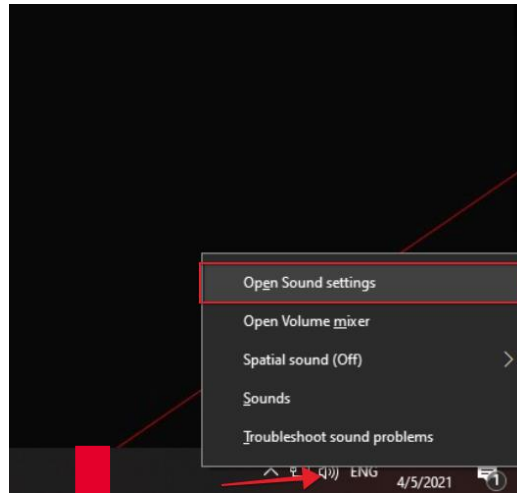
Once you install the drivers your audio settings should look like this. On the “Playback” tab, you’ll need to make the “Chat” track your “Default Communication Device”. Right-click over the chat track and select “Set as Default Communication Device”.



On the “Recording” tab make sure that “Chat Mic” is selected as default.

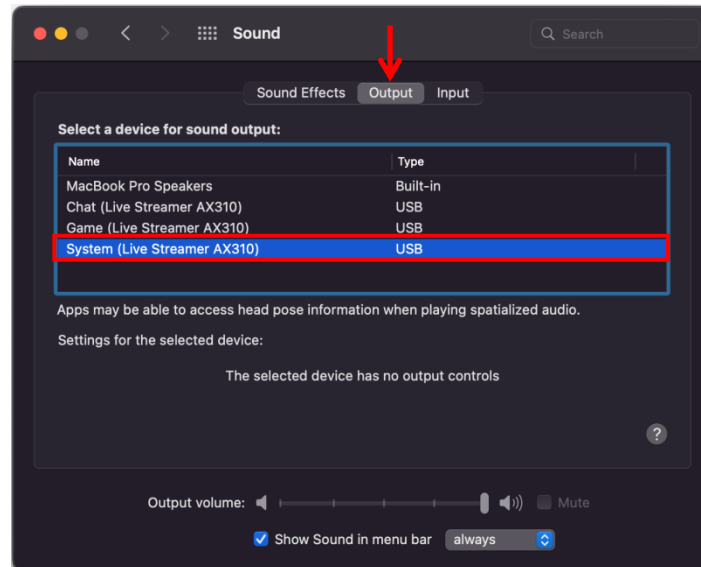


If you want to route different virtual sources to the “SYSTEM”, “GAME”, or “CHAT” channel, for example, Spotify, right-click on the audio icon on your Windows taskbar, select “Open Sound Settings”, look for advanced audio settings there you can select where to route each virtual source.

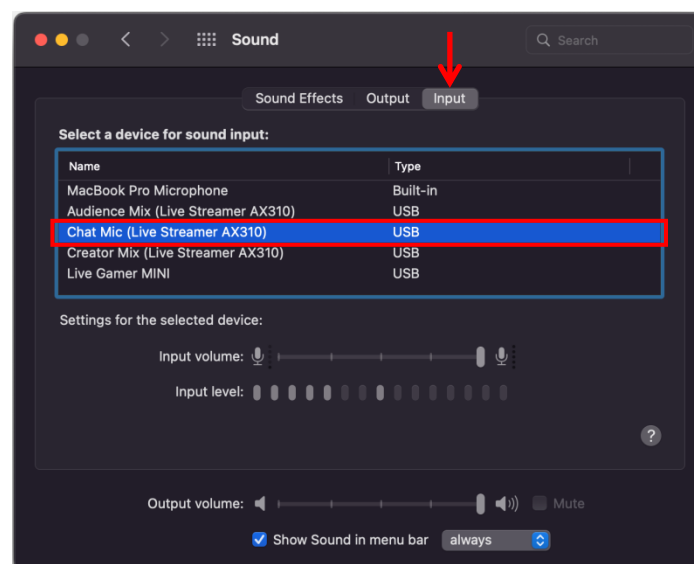


macOS Audio Routing Settings

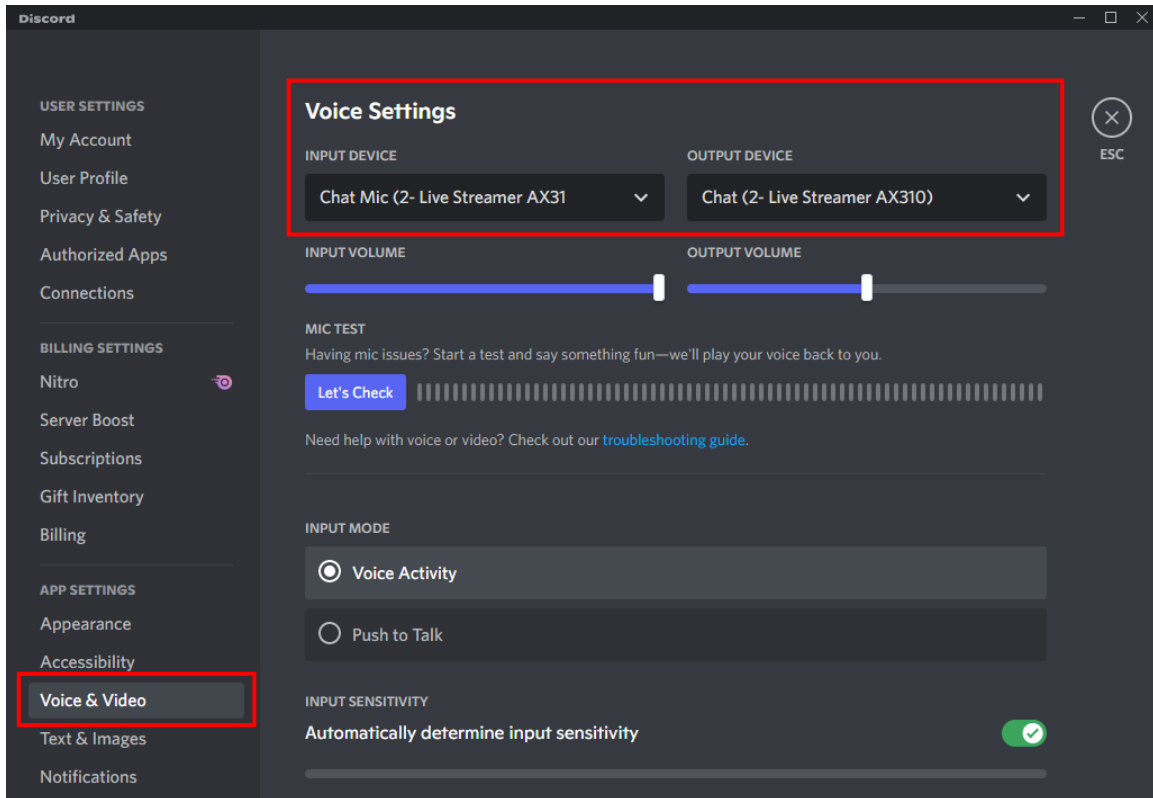
Go to system preferences > Sound > Output tab, and make sure that “System (Live Streamer AX310)” is selected. This will route all system audio to the “System” digital track on your Creator Central.



Now, go to the Input tab and make sure that “Chat Mic (Live Streamer AX310)” is selected.



Since macOS doesn't have a "Default communication devices" remember to make the changes on your voice chat software audio settings.



From your Mac/PC perspective these tracks are considered outputs:

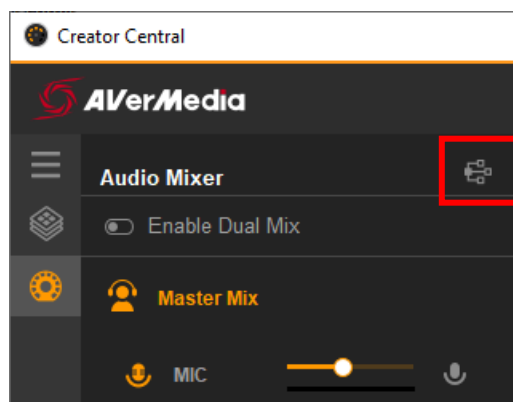
- System (Live Streamer AX310); controlled by the “System” Knob
- Game (Live Streamer AX310); controlled by the “Game” Knob
- Chat (Live Streamer AX310); controlled by the “Chat” Knob, should be used as audio output from your voice chat software (Discord, Skype, etc.)

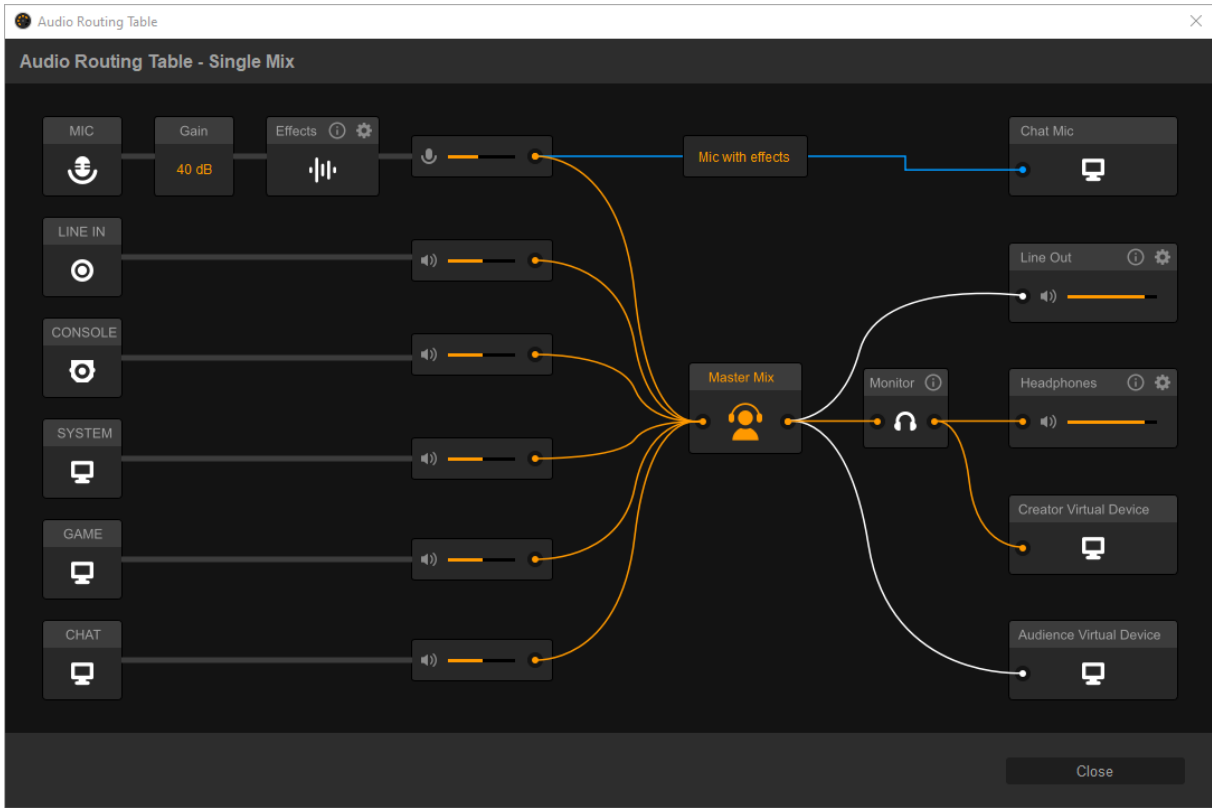
And these are considered inputs:

- Chat Mic (Live Streamer AX310); is the audio track that should be used for your voice chat software.
- Audience Mix (Live Streamer AX310); the sum of all 6 audio tracks on the AX310, and should be selected as the *main input for your Streaming software*.
 - When Audio Mixer is set to “Single Mix”, this mix will be the same as the “Creator Mix”.
 - When Audio Mixer is set to “Dual Mix”, this mix will be an independent one and will have different volume levels for all 6 tracks (Won’t be the same as “Creator Mix”).
- Creator Mix (Live Streamer AX310); The audio mix that goes to your headsets.

Audio Routing Table

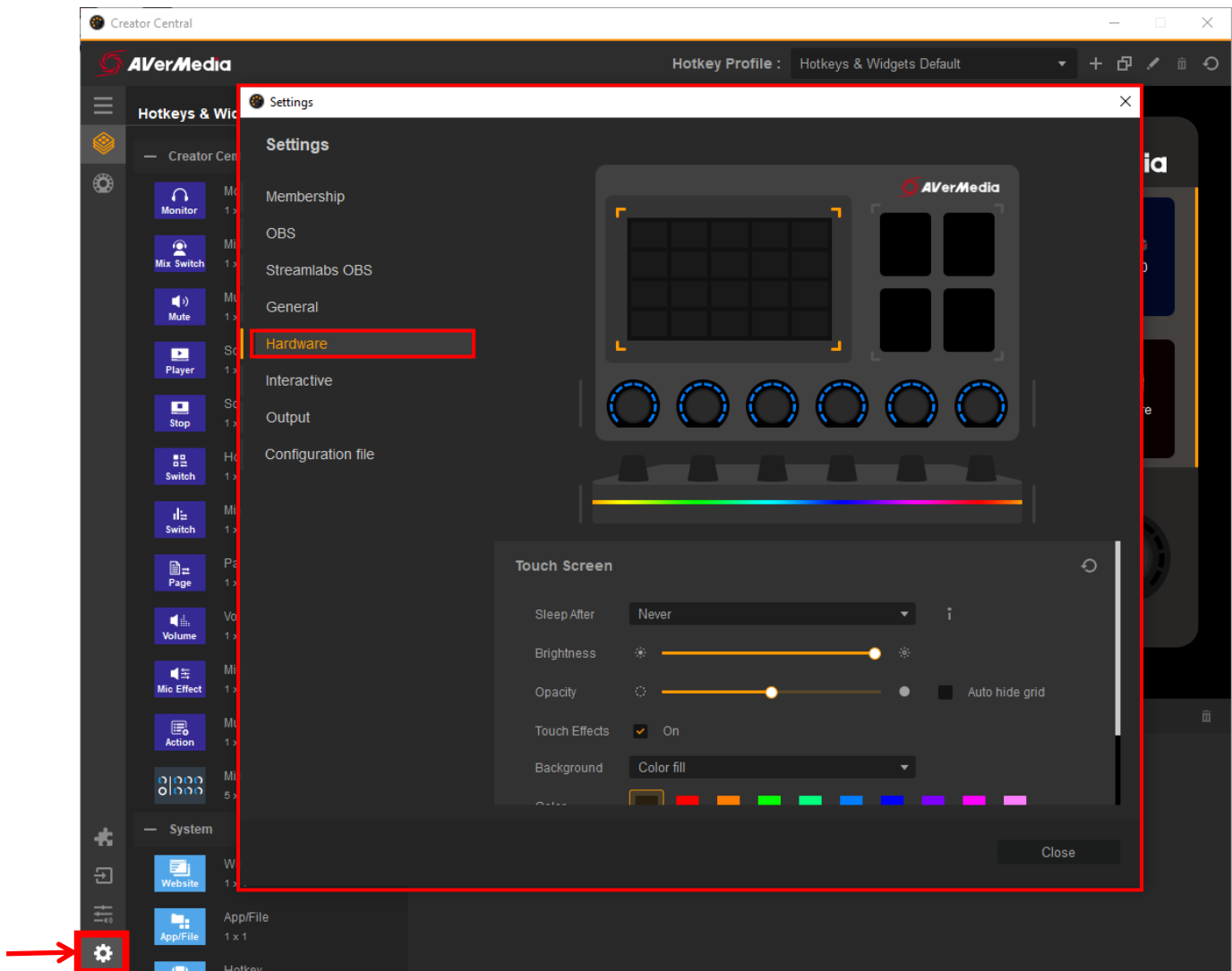
Located in the Audio Mixer control section (2), this illustrated table provides an overall, easy-to-read audio routing for all six tracks. It also includes volume levels and quick access to Output settings.





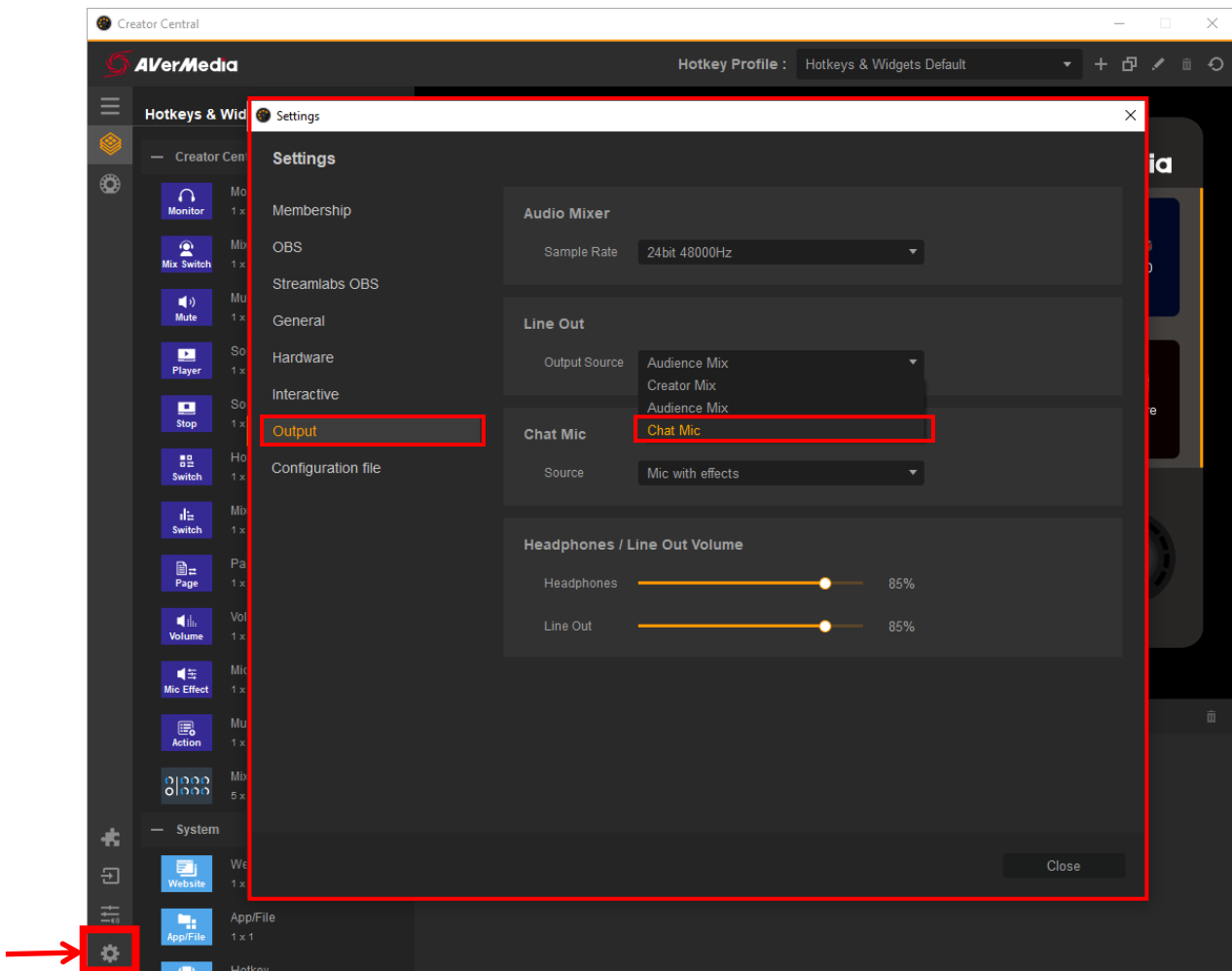
Hardware Settings

You will find more settings by clicking on the gear icon in the top right corner of the Creator Central app. Here you will find settings to manage your streaming accounts, the touch panels settings and RGB lighting controls, as well as audio output settings.



You can select which audio output is routed to the “LINE OUT” port in the output settings.

This setting can be used if you want to separately record different mix outputs, share to your streaming partner's headset, or route your mic to a gaming PC if you wish to use in-game chat instead of discord.



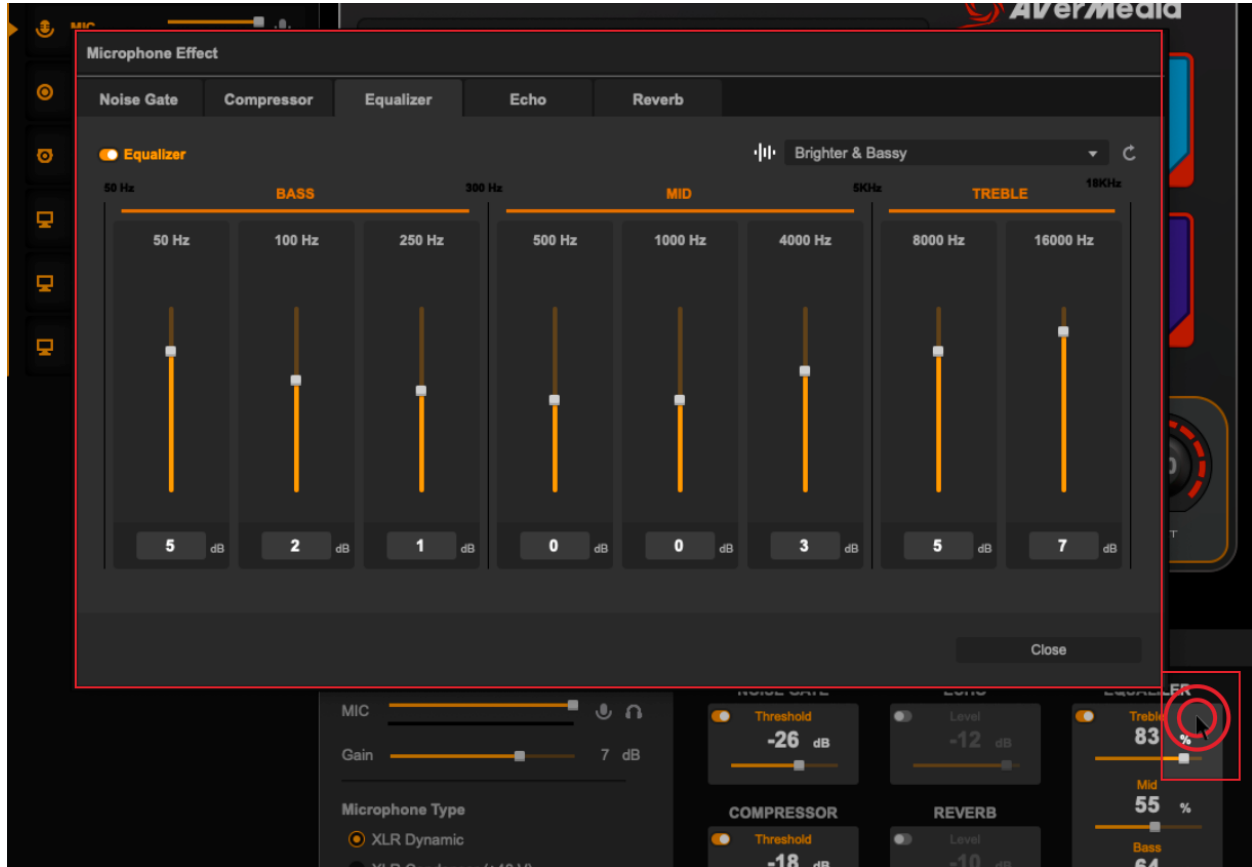
Audio Mixer settings

Microphone Settings

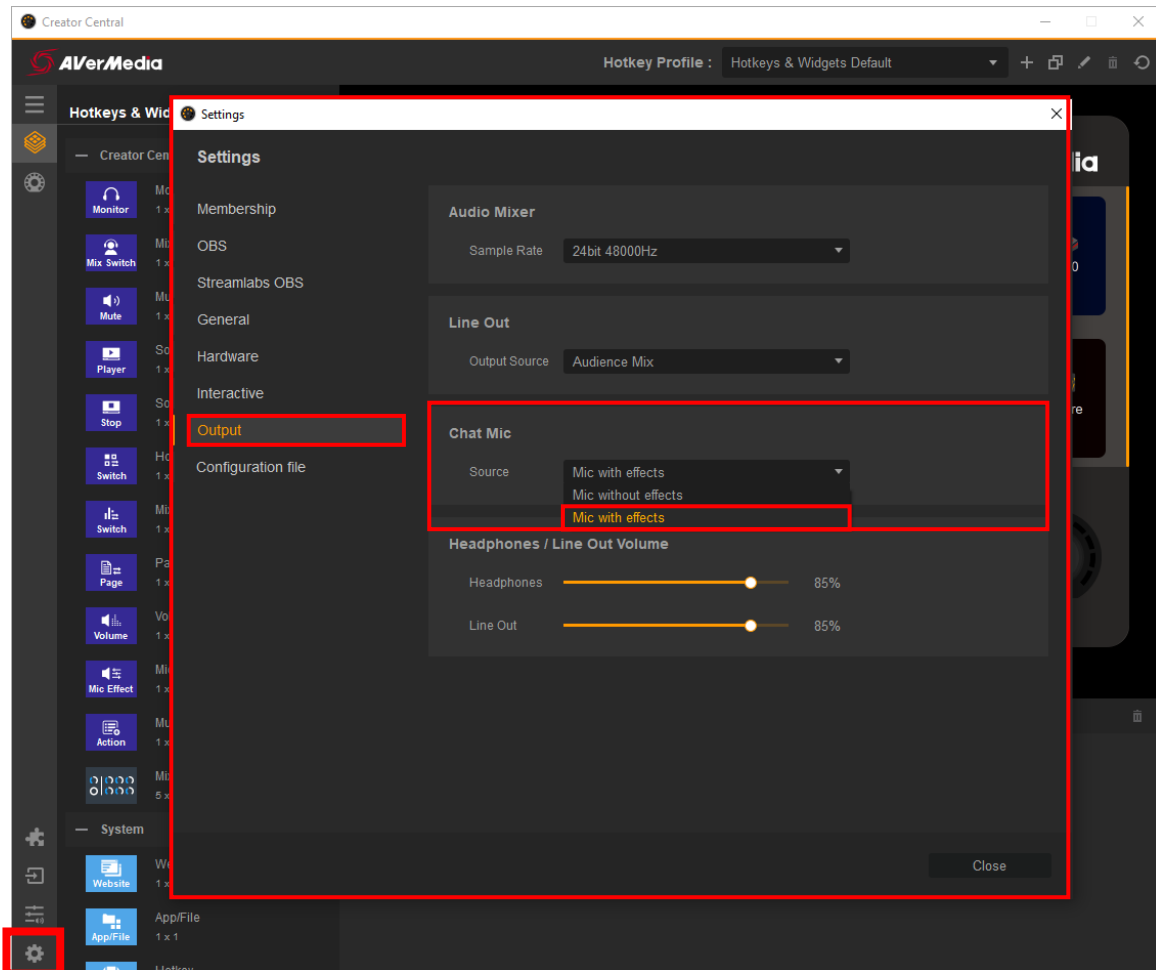
Select the MIC knob and you will be able to make adjustments to your mic, gain, noise gate, Equalizer, etc. or if you have connected an XLR condenser microphone that requires phantom power (+48V) you will enable that there as well.



By clicking on the different processing options you will open more settings for each section.

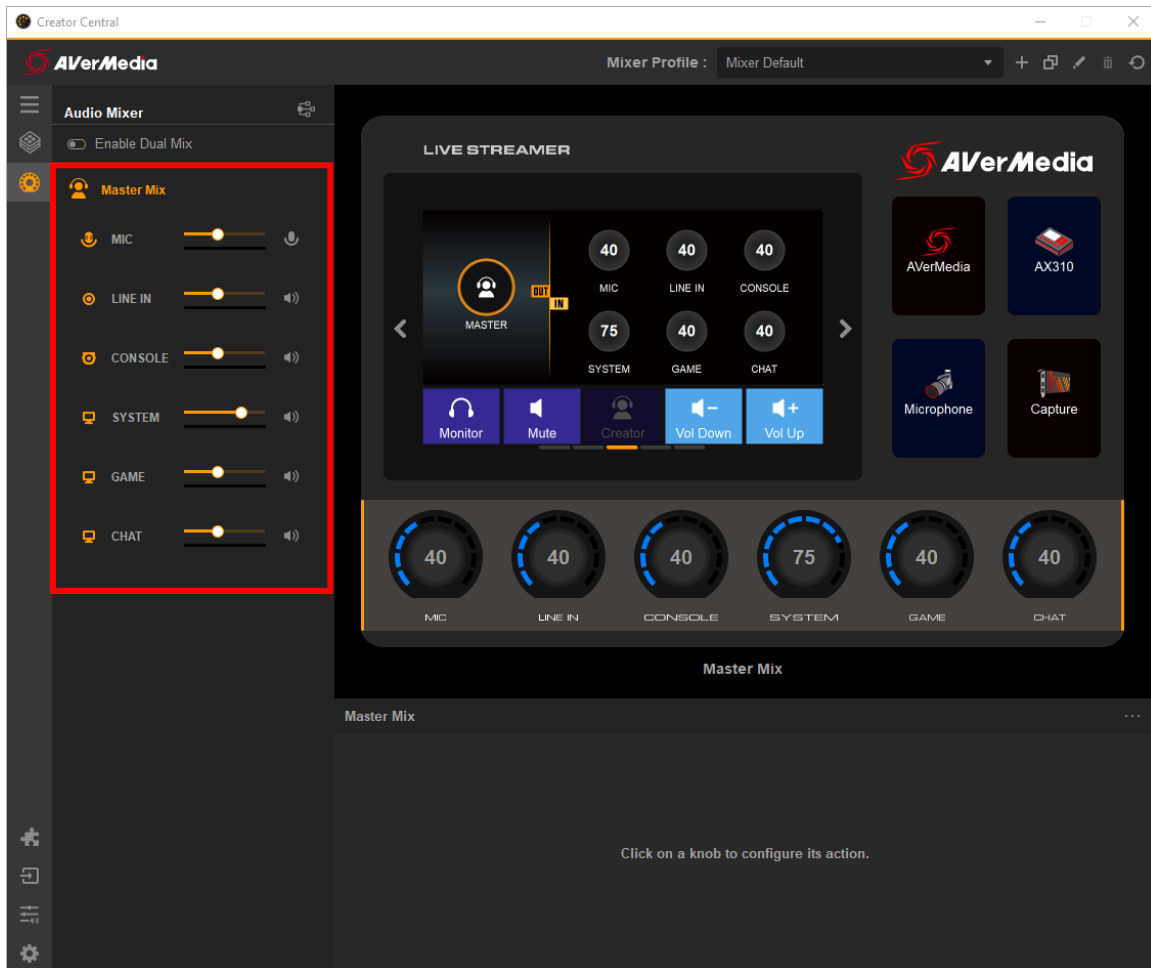


If you want the process mic audio to also be routed to “Chat Mic” (the audio going to your voice calling software) you can set it from the “Output” settings.

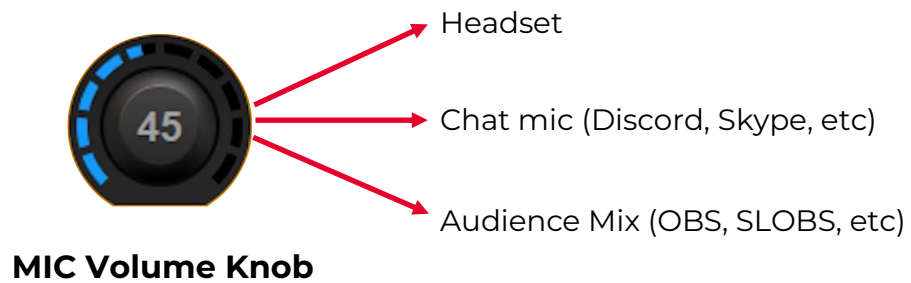


Single Mix Settings

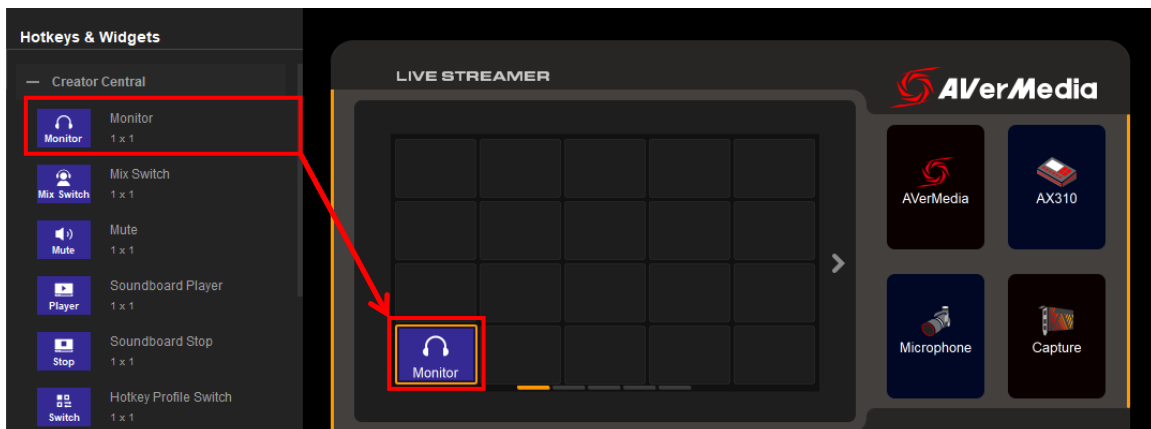
The Creator Central audio mixer's default is "Single Mix". This means you will have one audio mix going out to the "Headphones output port", "Line out port", and to your stream (the "Audience Mix" virtual audio input for your streaming Software).



The “MIC” knob will control mic audio going to Master Mix and chat mic.



You can control the mic monitoring (Mic playback) with the *Monitor* widget. In “Single Mix” the monitor widget will enable and disable the microphone monitoring (playback) in your headset.

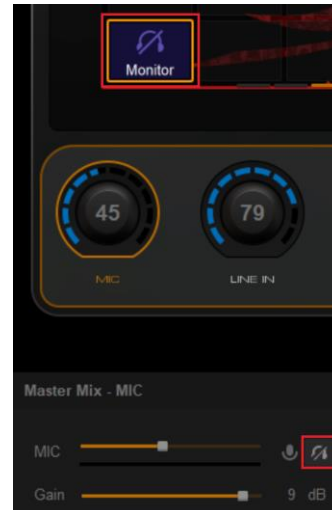


Microphone sound will always be going out to the “Audience Mix” input on your streaming software, even if you can’t hear it on your headphones.

Mic Playback **ON**

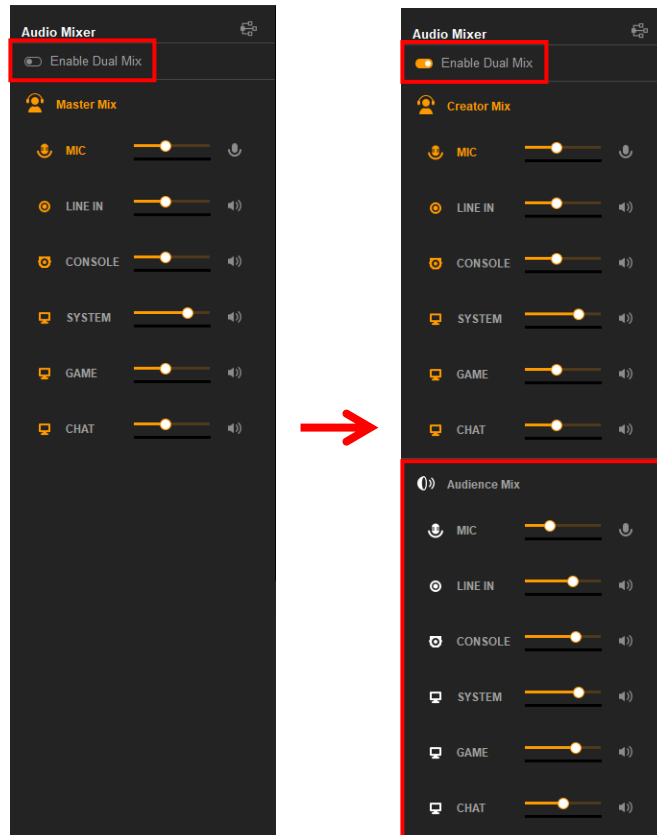


Mic Playback **OFF**



Dual Mix³ Settings

To switch to “Dual Mix”, click “Enable Dual Mix” right under the title Audio Mixer.



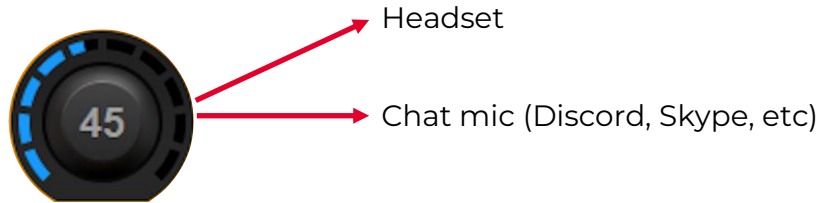
You now have two independent mixes, Creator Mix and Audience Mix, both with different audio levels of the 6 tracks.

Creator Mix: Mix of the 6 tracks heard in the headset.

Audience Mix: Mix of the 6 tracks heard by the audience (live stream).

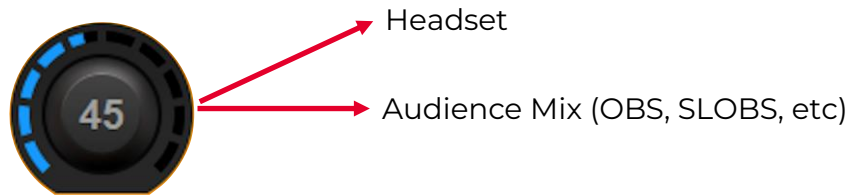
³ In this mode the “Line out” port will default to output the “Audience Mix” audio.

In “Dual Mix” the “MIC” knob will control mic audio going to the “Creator Mix” and chat mic.



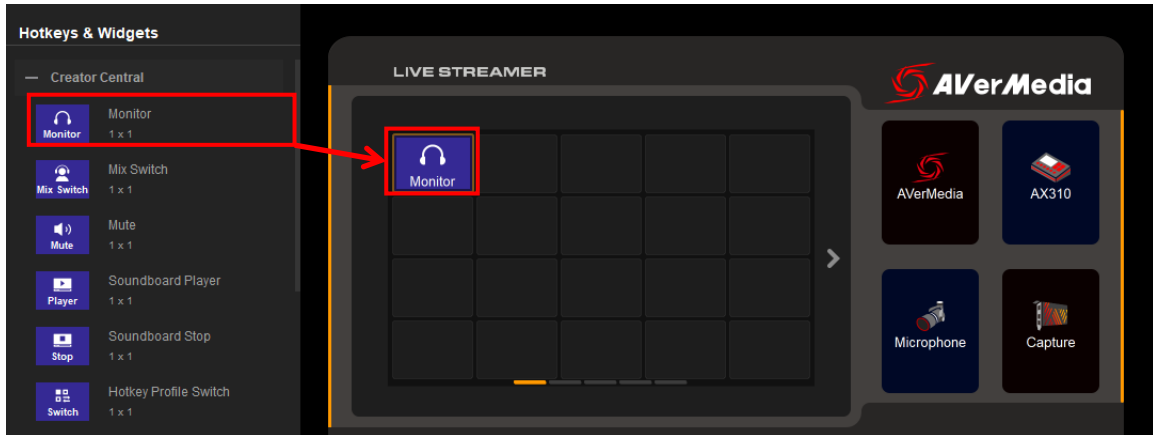
MIC Volume Knob
(Creator Mix)

When you select “Audience Mix” the “MIC” knob will control the mic audio going to your streaming software (Audience Mix - Live Streamer AX310).



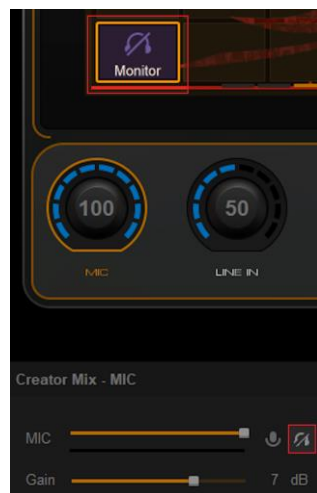
MIC Volume Knob
(Audience Mix)

While in “Creator Mix” you can control the mic monitoring (Mic playback) with the *Monitor* widget. The monitor widget will enable and disable microphone monitoring (playback) in your headset. While in Dual Mix, mic monitoring will only work with creator mix, Audience Mix won’t be affected.

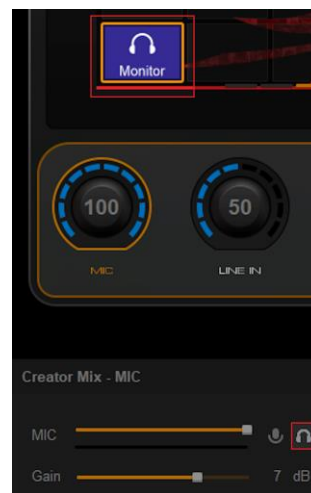


Microphone sound will always be going out to the “Chat mic” and “Audience Mix”, even if playback is disabled.

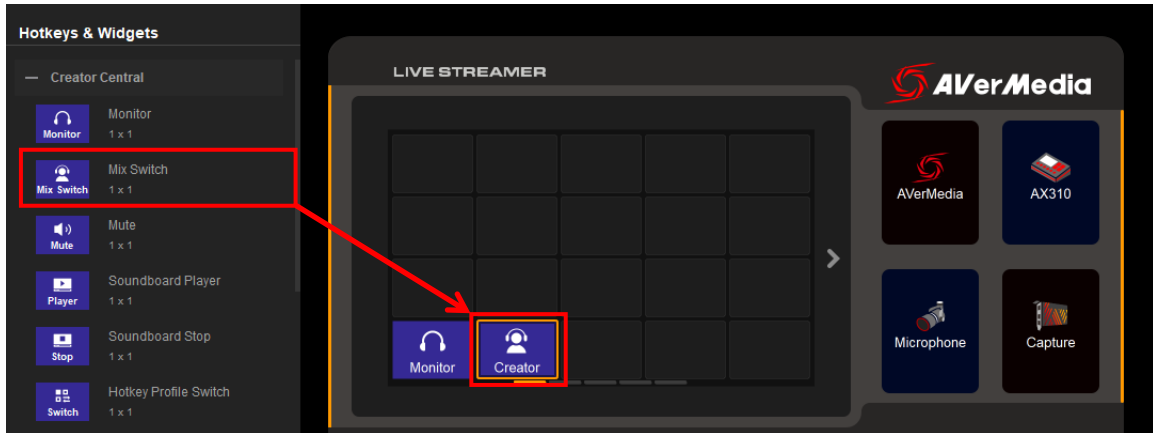
Mic Playback **OFF**



Mic Playback **ON**



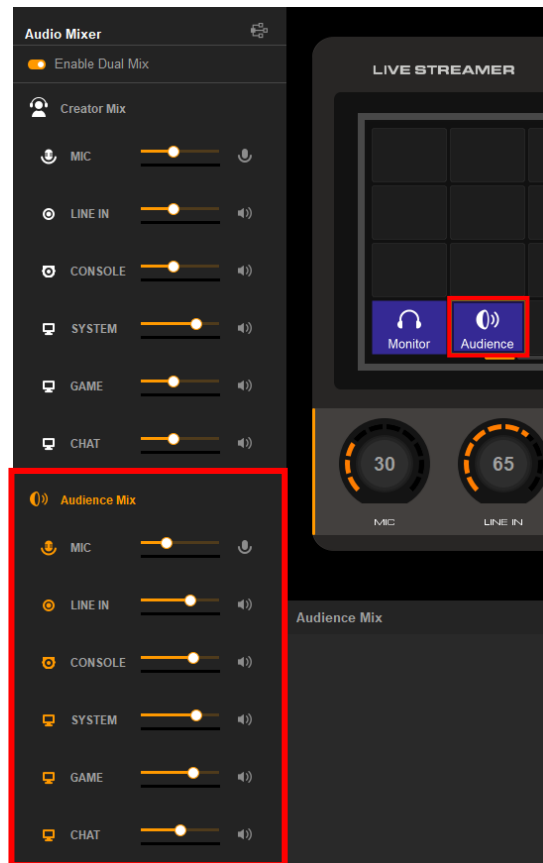
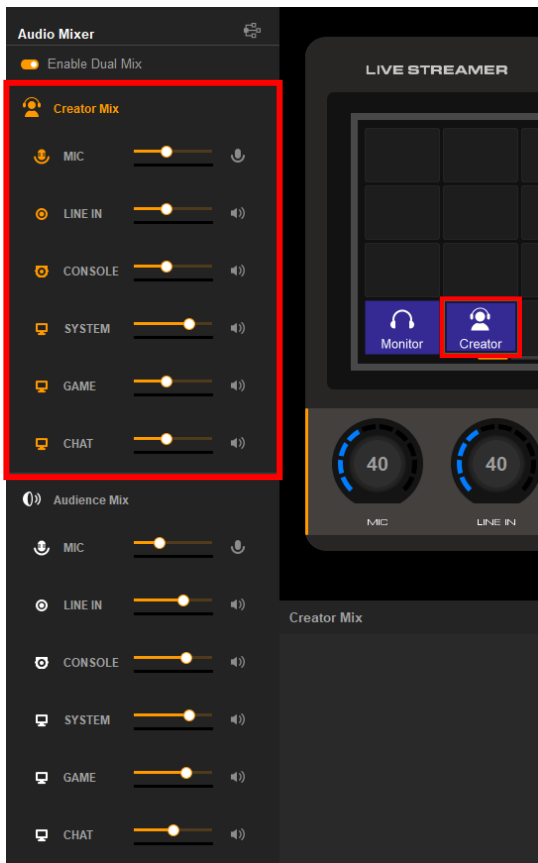
You can switch between both mixes using the “Switch Mix” widget. This will allow you to playback the desired mix on your headset and control the volume levels in the selected mix.



Control Panel Setup (Hotkeys & Widgets)

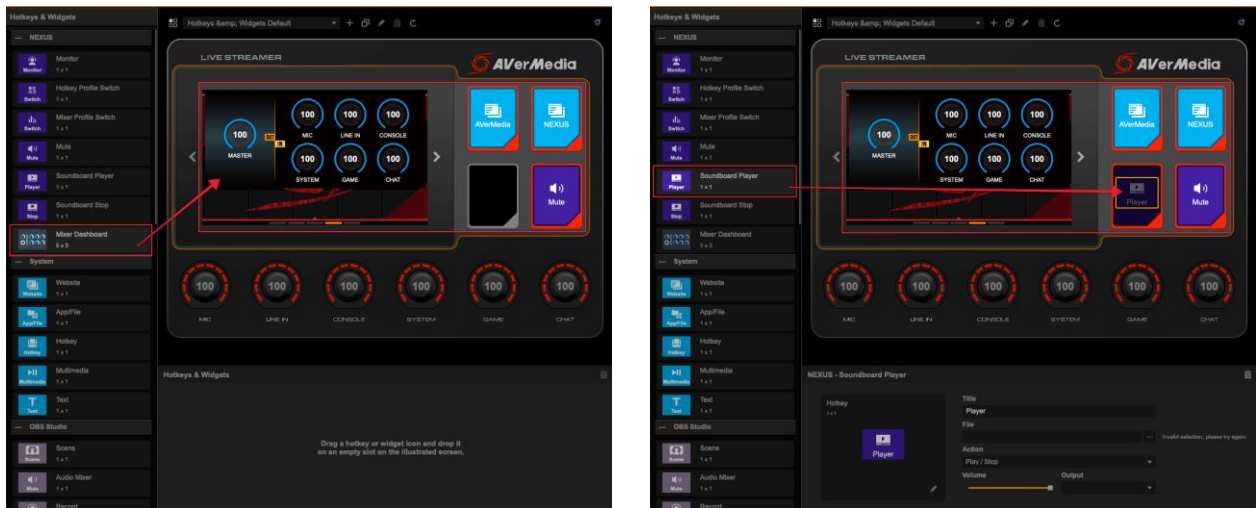
Creator Mix Playback

Audience Mix Playback

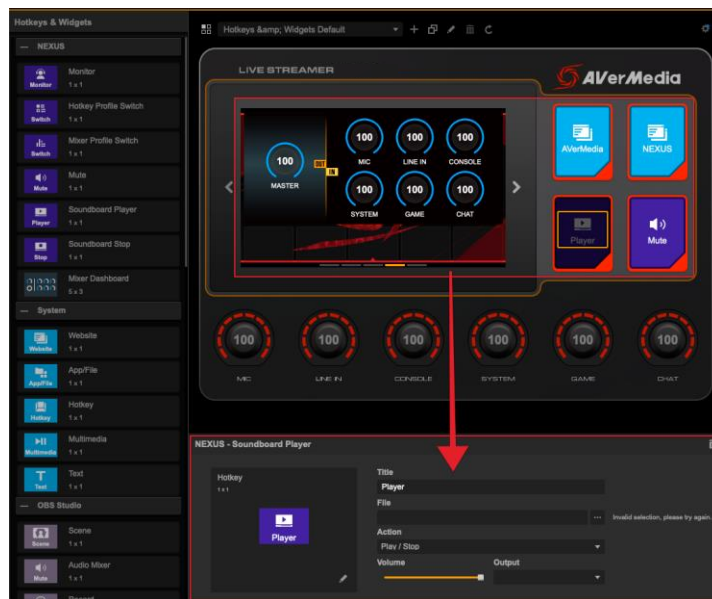


Overall, you have five pages for your hotkeys and widgets (4x5 canvas per page). You can swipe left or right to move through the pages. If you want to return to your home screen, simply swipe up.

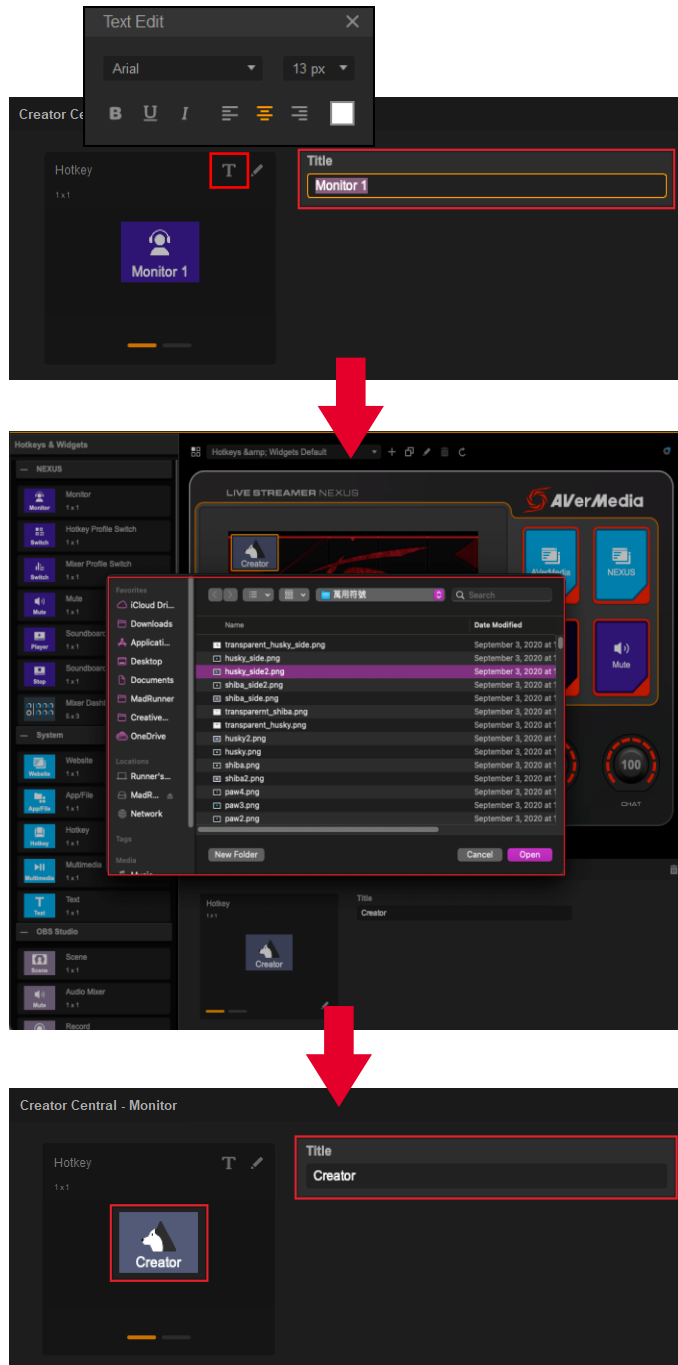
Widgets and hotkeys can be added by dragging them over to the control panel.



Hotkeys and widgets can be modified in the settings section below.

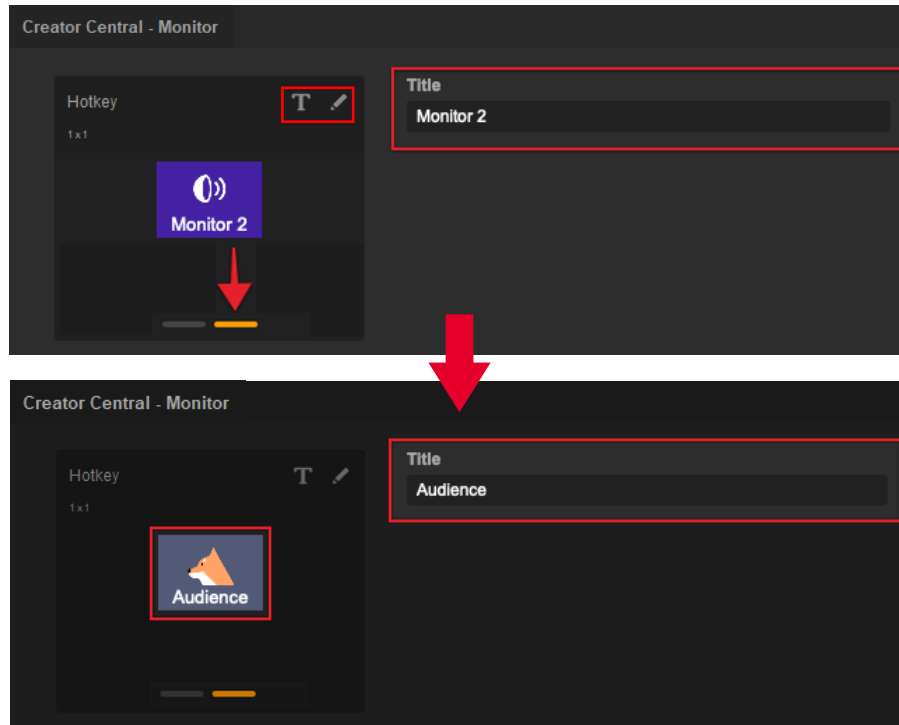


You can edit the text (including font style, size, color, alignment, etc.) or the image displayed on the settings section of the widget to a hotkey. Click the text field to change the name or click on the pencil icon and select the image⁴ you want.



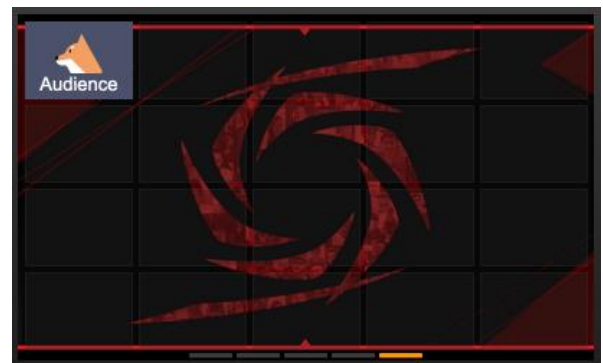
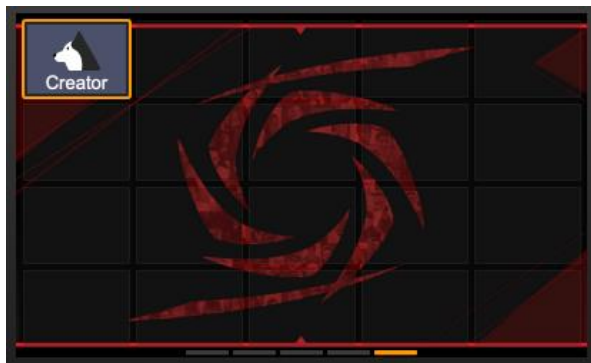
⁴ Image resolution should be 150x108 px, supported formats are PNG, JPG, and GIF

If the widget or hotkey has two “statuses” you can customize the 2nd status by selecting the second status tab of the widget/hotkey and make the changes you want.



Status 1

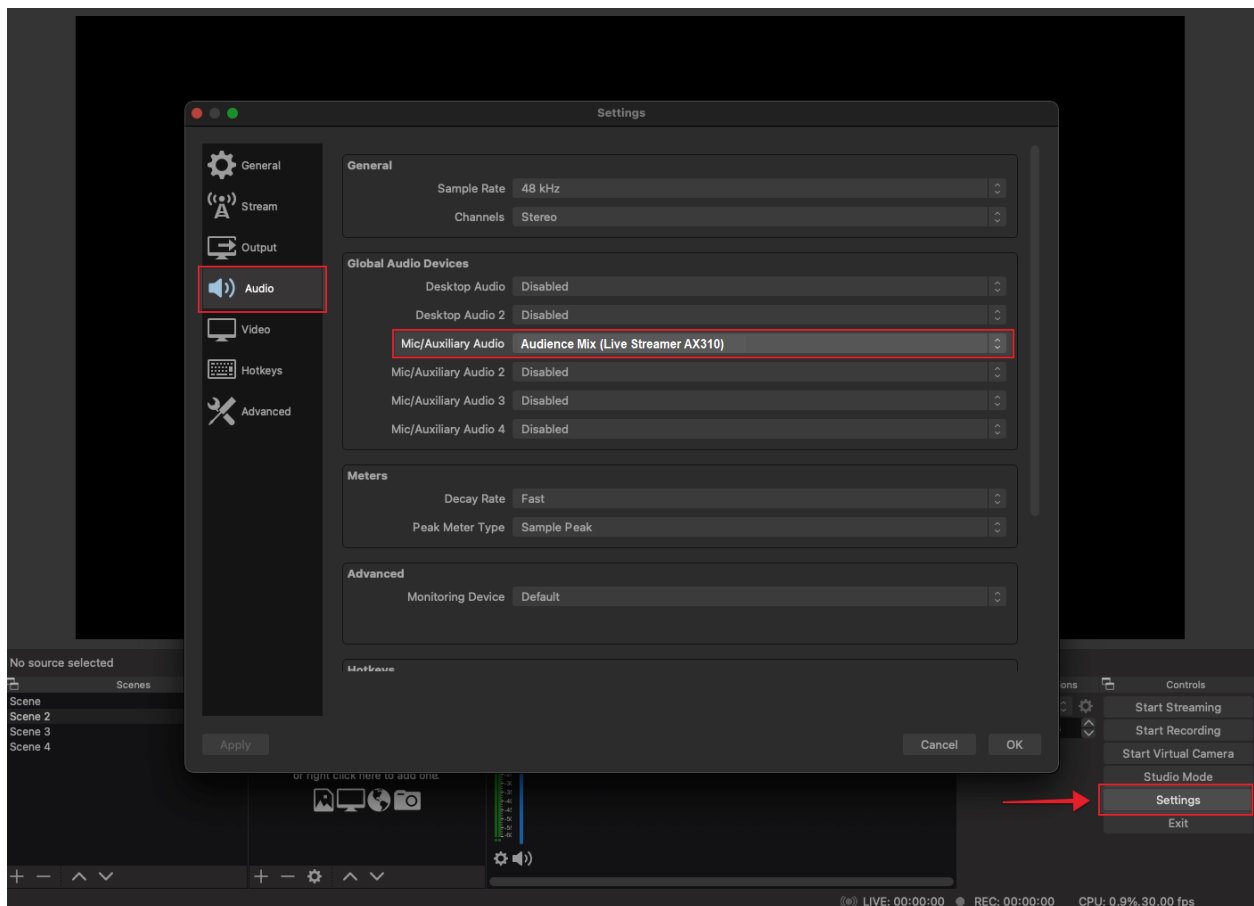
Status 2



OBS Setup

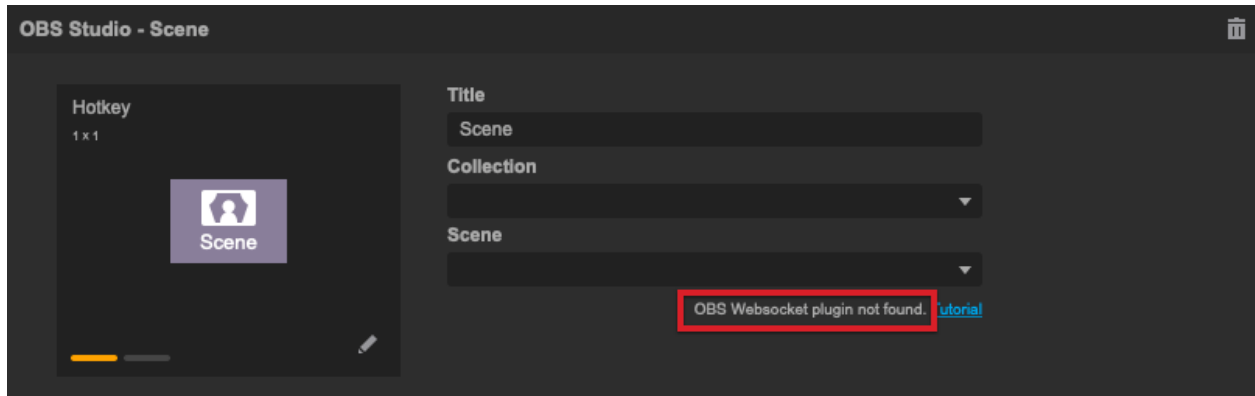
The first step is to delete or mute all audio sources and disable desktop audio, and others. All your audio sources should be routed through the AX310.

Go to OBS Settings > Audio > “Mic/Auxiliary Audio” and select **“Audience Mix (Live Streamer AX310)”**



OBS Websocket Plugin

To use OBS widgets, you will need to download and install the OBS WebSocket plugin, here is the reference link [WebSocket download link](#).



For Windows

We recommend you can use the installer

“*AVerMediaOBSWebSocketServerInstaller_v1.0.1.exe*” (works only with combined 32/64-bit installations): download it, launch it and follow the instructions.

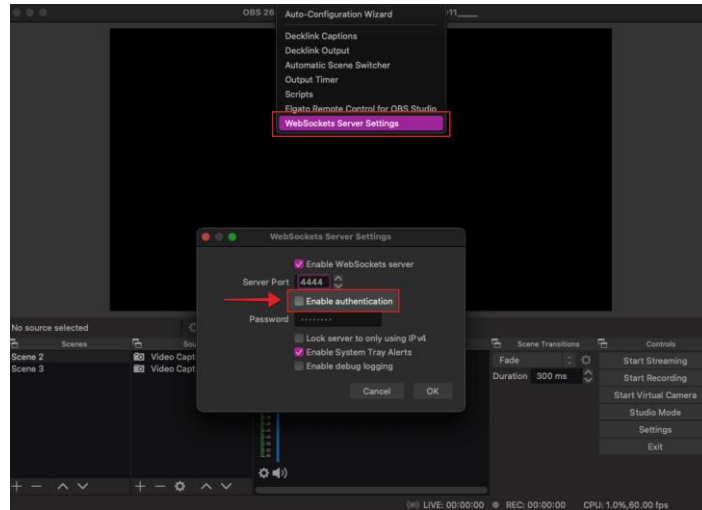
If that doesn't work then download and unzip the “*obs-websocket-1.0.1.zip*” file. Copy the contents of the archive to the root of your OBS Studio installation folder (either *C:\Program Files\obs-studio* or *C:\Program Files (x86)\obs-studio*).

For macOS

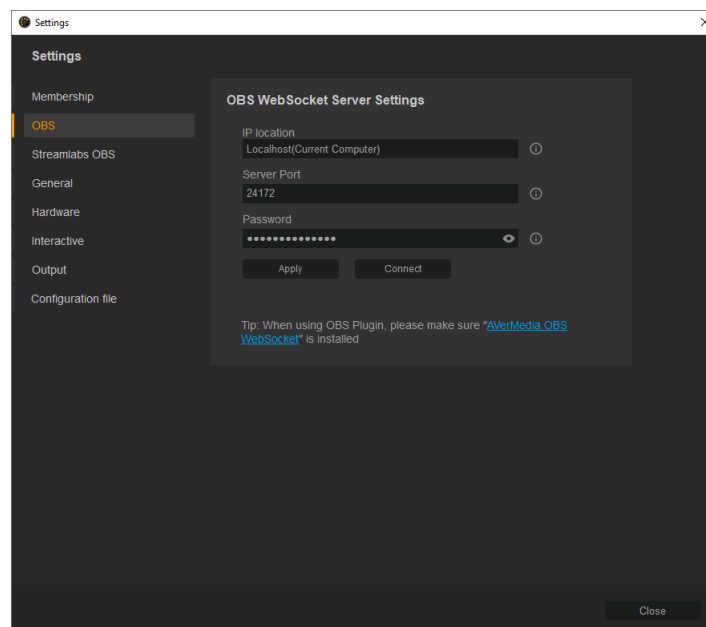
Download and run *AVerMediaOBSWebSocketServerInstaller_v1.0.1.pkg*.

Note:

If you are not able to use OBS widgets right away make sure the “Enable authentication” is unchecked.



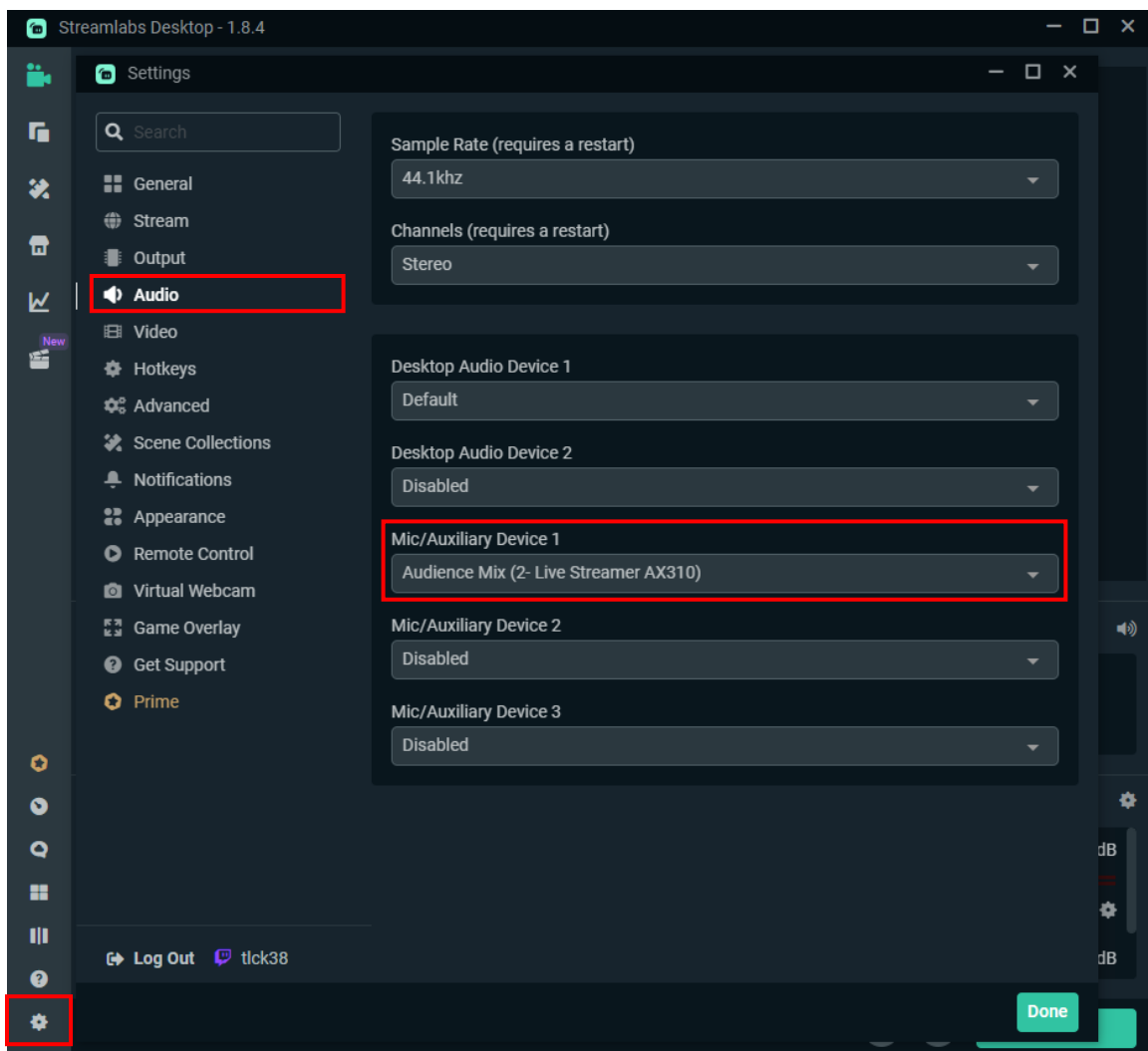
If you choose to use a password with your OBS websockets, remember to add the account in the Creator Central app settings and type in the password.



SLOBS Setup

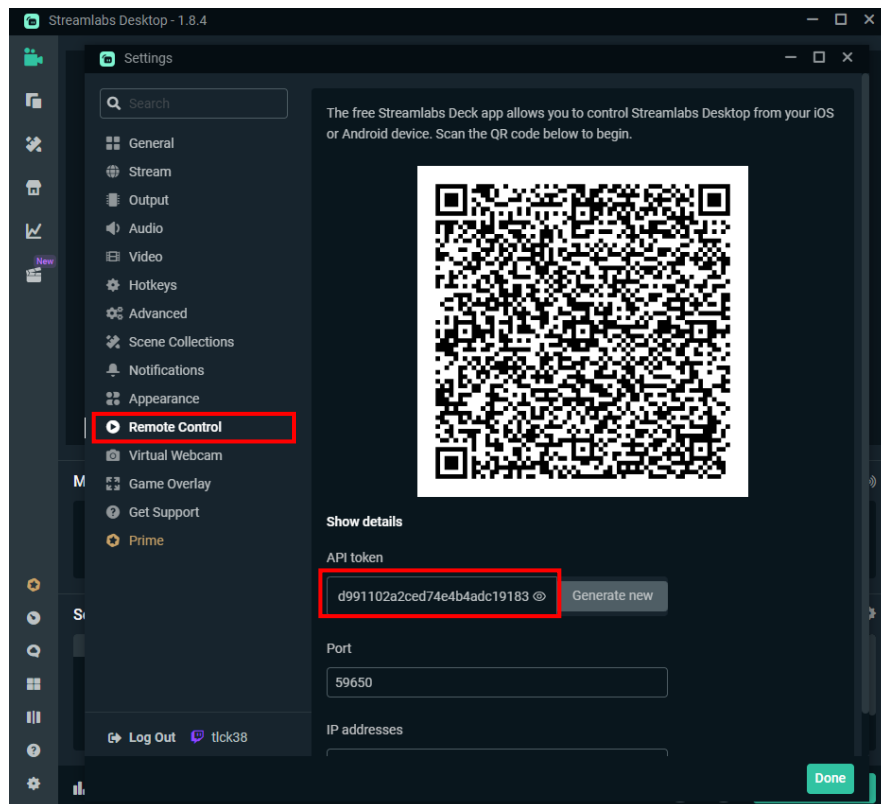
The first step is to delete or mute all audio sources and disable desktop audio and others. All your audio sources should be routed through the AX310.

Go to SLOBS Settings > Audio > “Mic/Auxiliary Audio” and select **“Audience Mix (Live Streamer AX310)”**

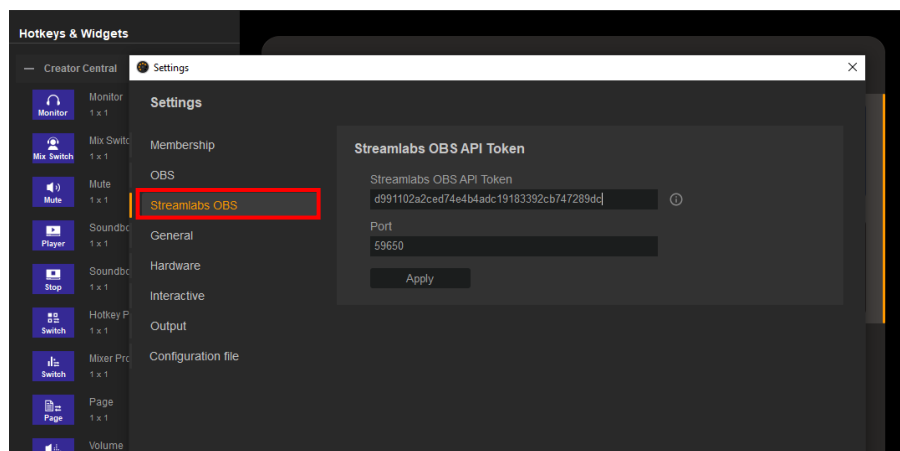


SLOBS Token Plugin

To use SLOBS widgets, you will need to get your SLOBS token. Get this token by going into SLOBS settings page > Remote Control > “Click to reveal” > Show details; now copy the API token number.



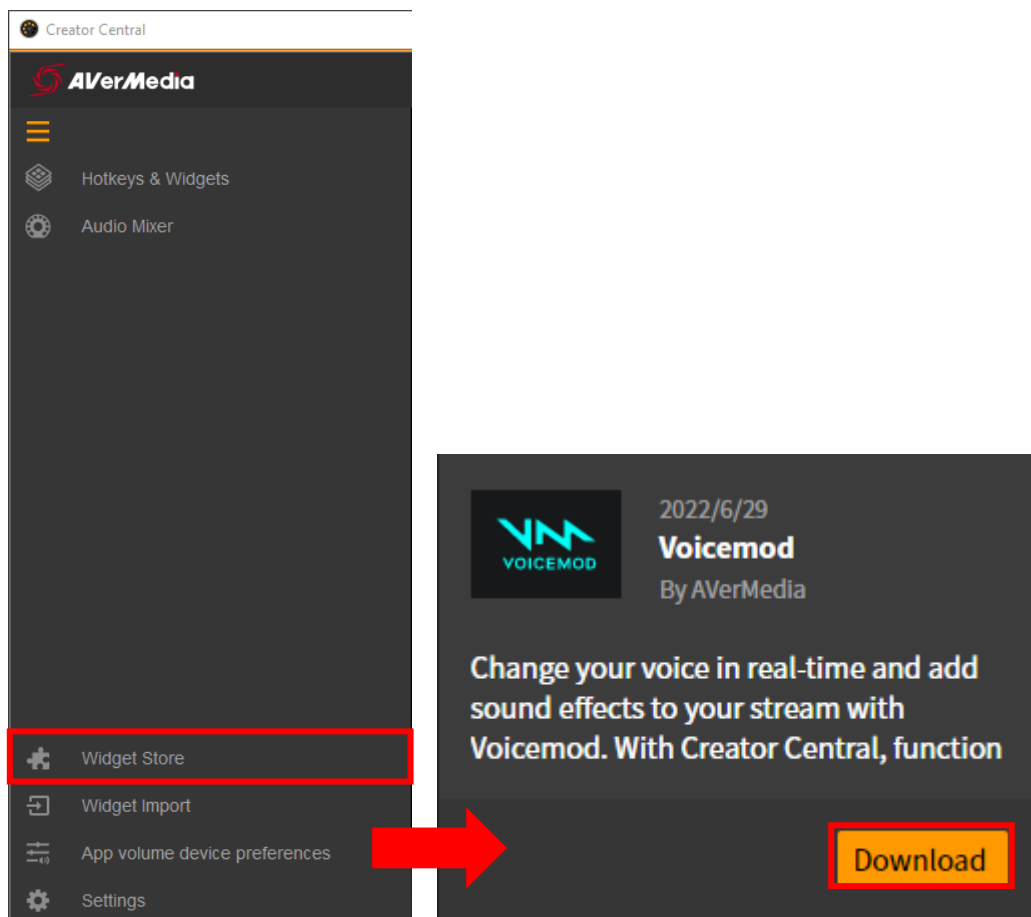
For the next step, go to Creator Central Settings, add Streamlabs OBS and paste the token number.



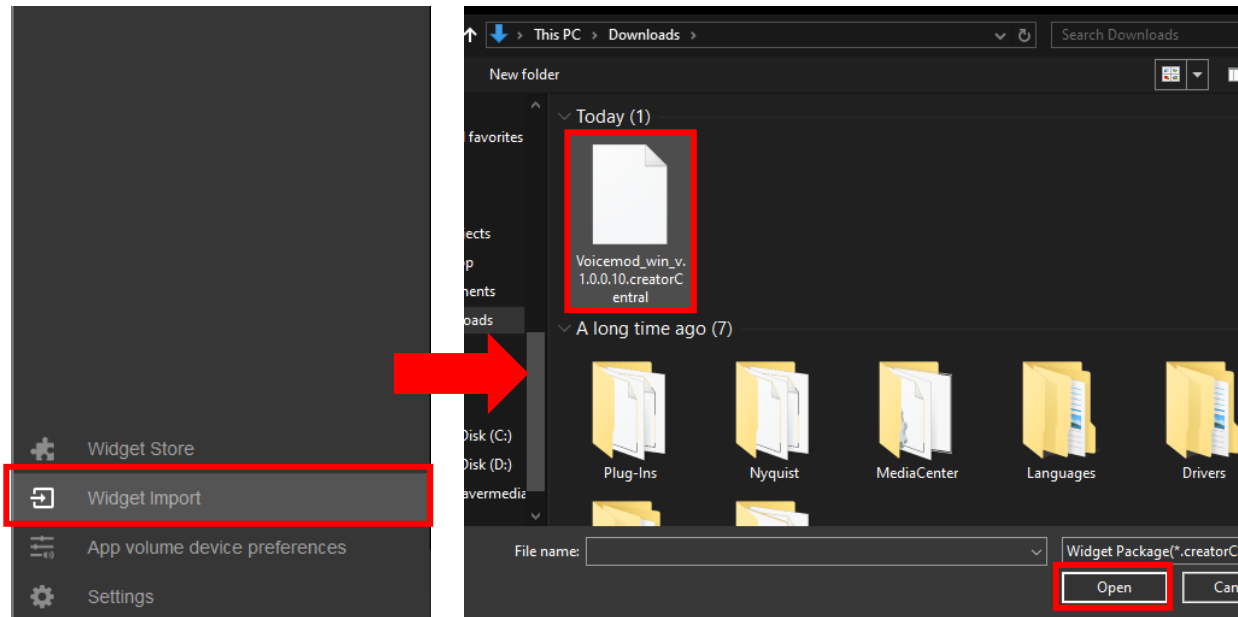
Voicemod Plugin & Setup

Creator Central now supports Voicemod with a handy plugin so streamers can have real-time voice-changing features and sound effects right on their fingertips using AX310. Follow the instructions below to install the Voicemod plugin and set up your Creator Central and OBS.

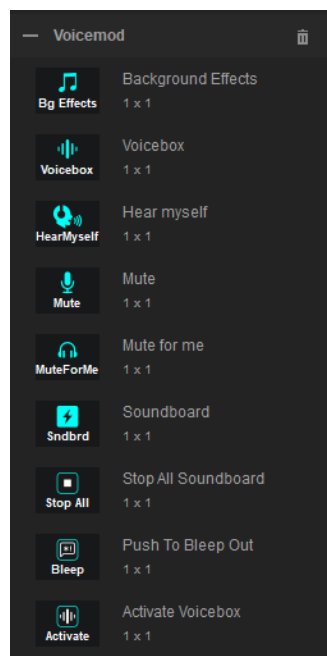
Go to Creator Central > Widget Store > Voicemod, and download the Voicemod plugin file to your computer.



Once the file is downloaded, go to Creator Central > Widget Import, select the file, and click Open.



The installation may take several minutes, wait until you see Voicemod hotkeys appear in Hotkey & Widgets as shown below.



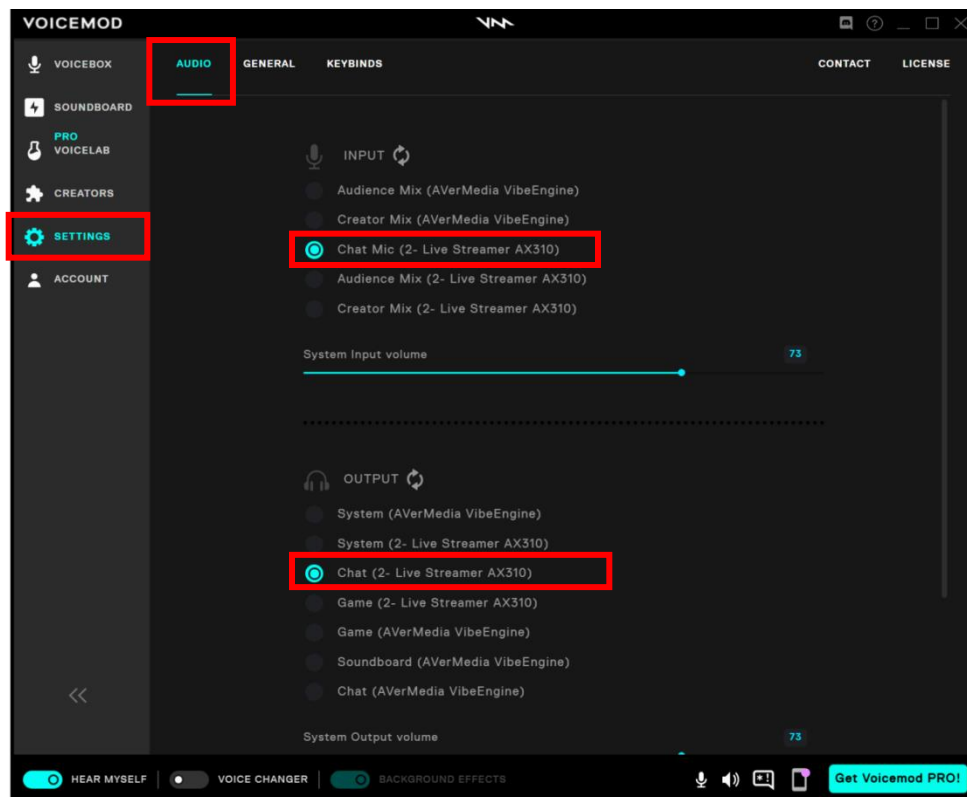


Now to the Voicemod app itself. Download Voicemod from their official website [here](#) if you haven't already done so.

After the installation is complete, run it, and go to Settings > Audio > Input. Then select **Chat Mic (Live Streamer AX310)**.

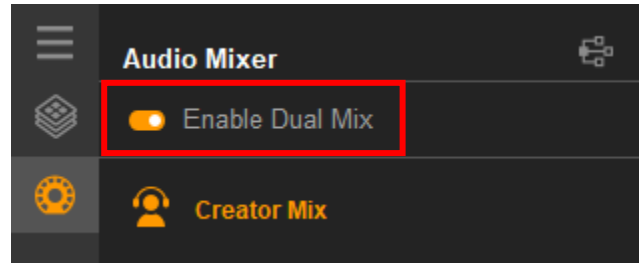
Go down to Output and select **Chat (Live Streamer AX310)**.

Note: The output here is for monitoring only. *Mute* this channel in the Audience Mix of Creator Central.



Creator Central Setup

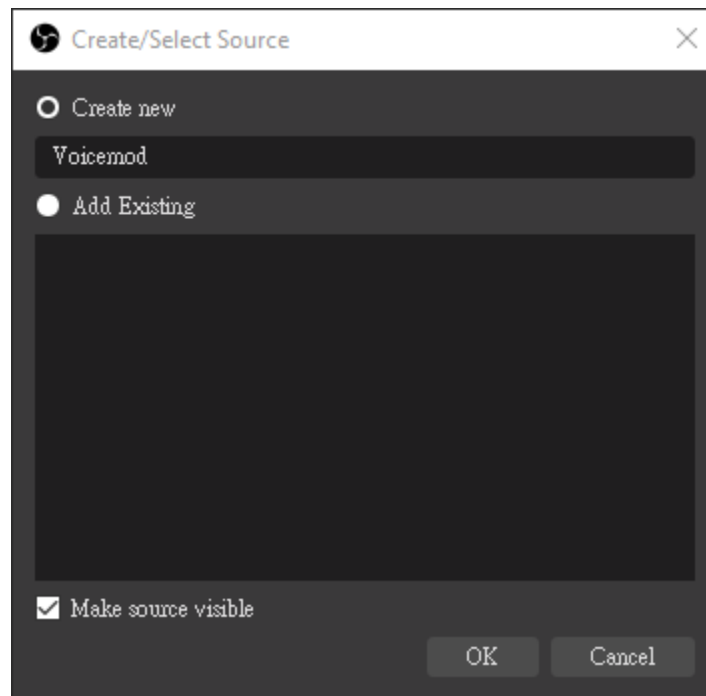
Go to Creator Central > Audio Mixer, and make sure **Dual Mix** is enabled.



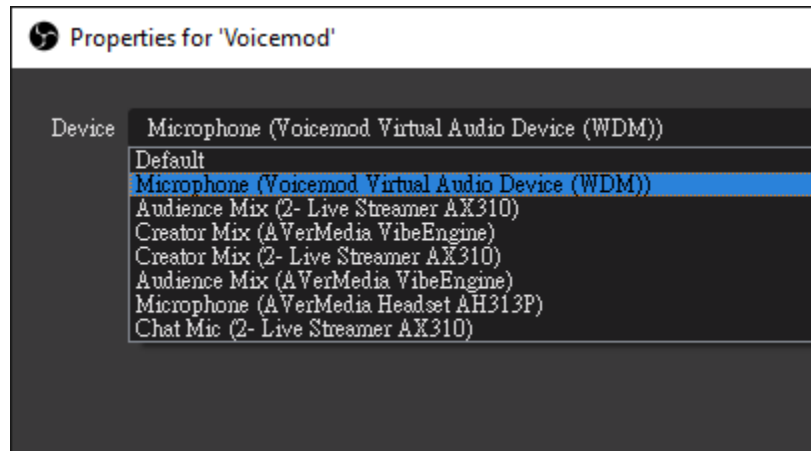
Streaming Voicemod Sound with OBS

Go to OBS > Sources > click the “+” icon > **Audio Input Capture**.

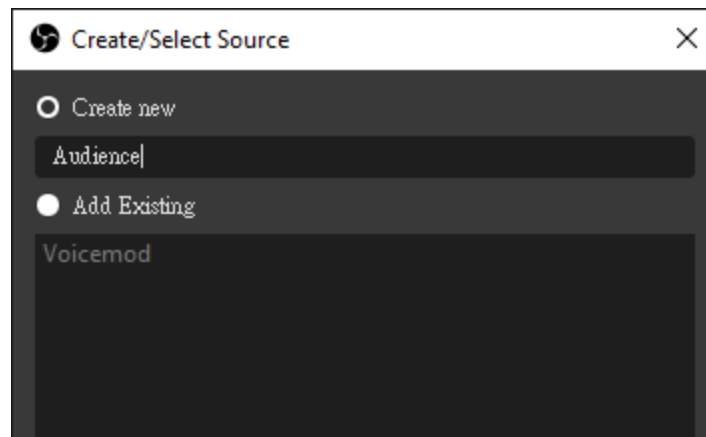
Rename it to **Voicemod**, and click OK.



Select **Microphone (Voicemod Virtual Audio Device (WDM))**. This is the mic sound output from Voicemod.

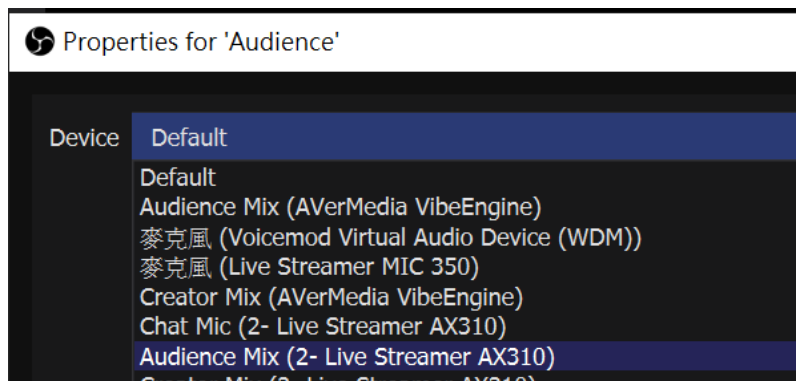


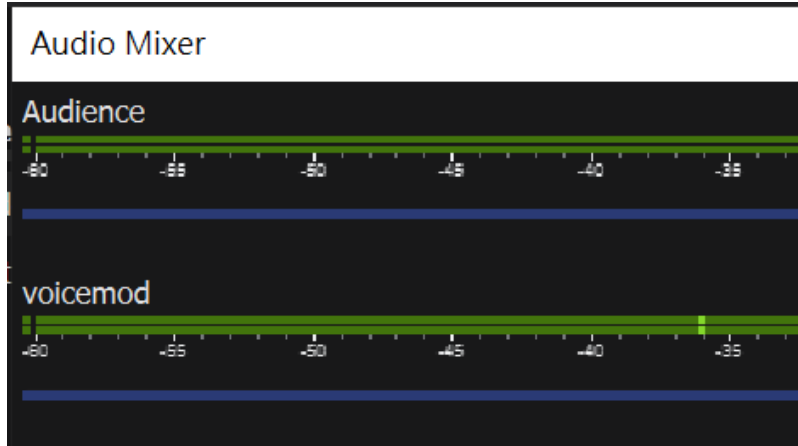
Create another Audio Input Capture called **Audience**.



Select **Audience Mix (Live Streamer AX310)** as the device.

Note: Make sure to *mute* the MIC channel in Creator Central's Audience Mix.



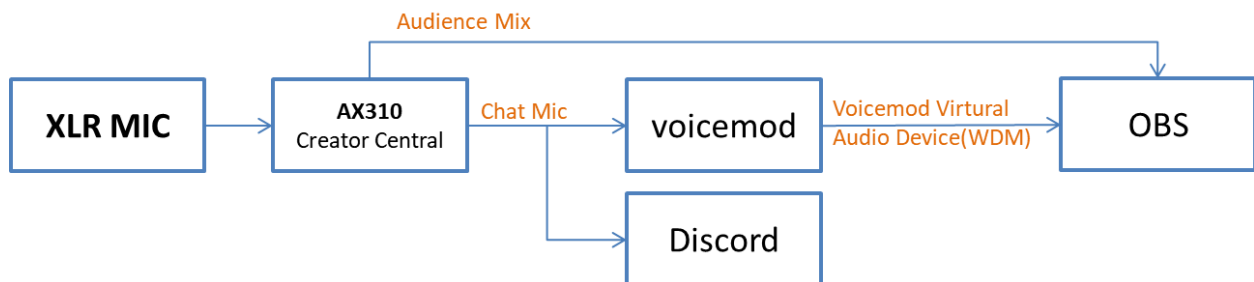


Streaming Voicemod Sound with OBS and Other Apps (e.g. Discord)

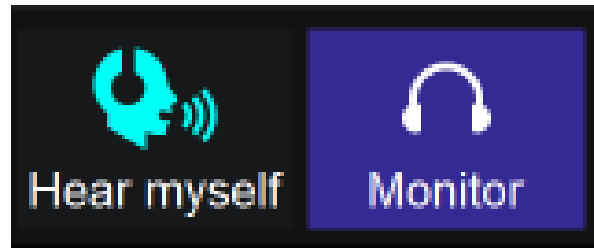
For Discord's audio input, select **Chat Mic (Live Streamer AX310)**, this will be the XLR microphone sound.

Create or set another audio input to **Voicemod (Voicemod Virtual Audio Device (WDM))**, this will be the Voicemod sound.

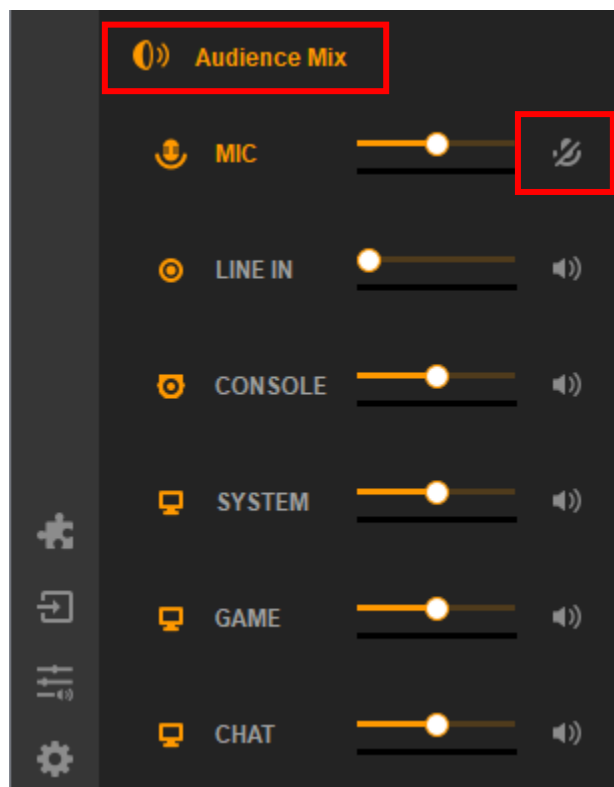
Audio routing table below:



Monitoring



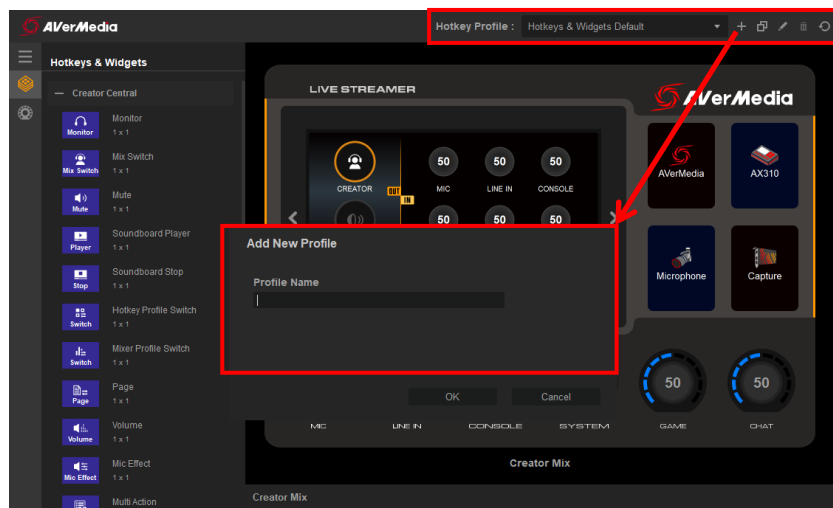
Hear myself is to hear the microphone sound on Voicemod. The **Monitor** in AX310 Creator Central means monitoring the XLR mic. When you want to hear sounds in the Audience Mix mode, make sure to *mute* the MIC sound in Audience Mix to keep the XLR microphone sound from looping in.



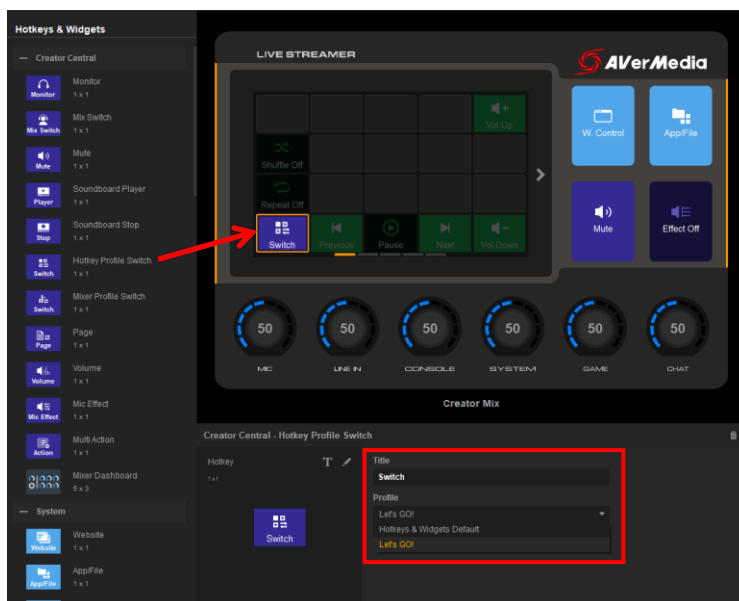
Hotkey & Widget Profiles

You can add various control center profiles for different situations. These profiles will store your Widgets touch panel and function buttons' hotkey and widget settings.

To create a new profile, click the “+” icon, type the name of this new profile and select “OK”.



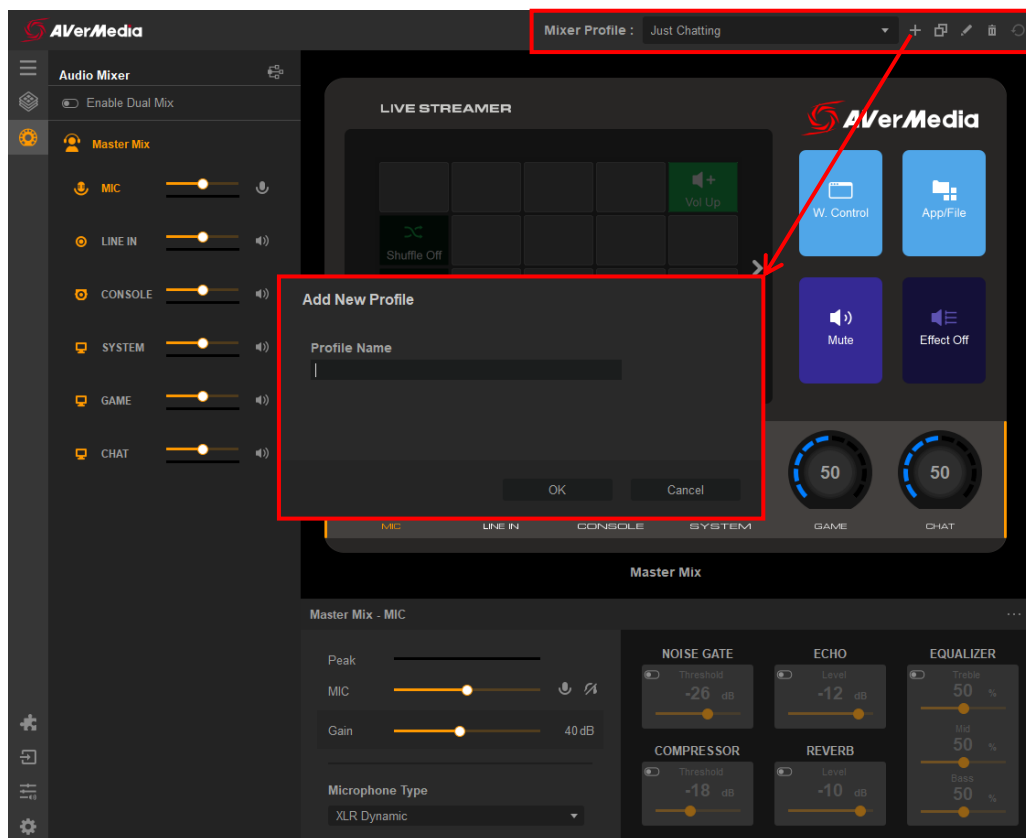
To quickly switch between profiles add a “Hotkey Profile Switch”. And at the bottom, you will have a dropdown menu where you can choose which profile you want to switch to.



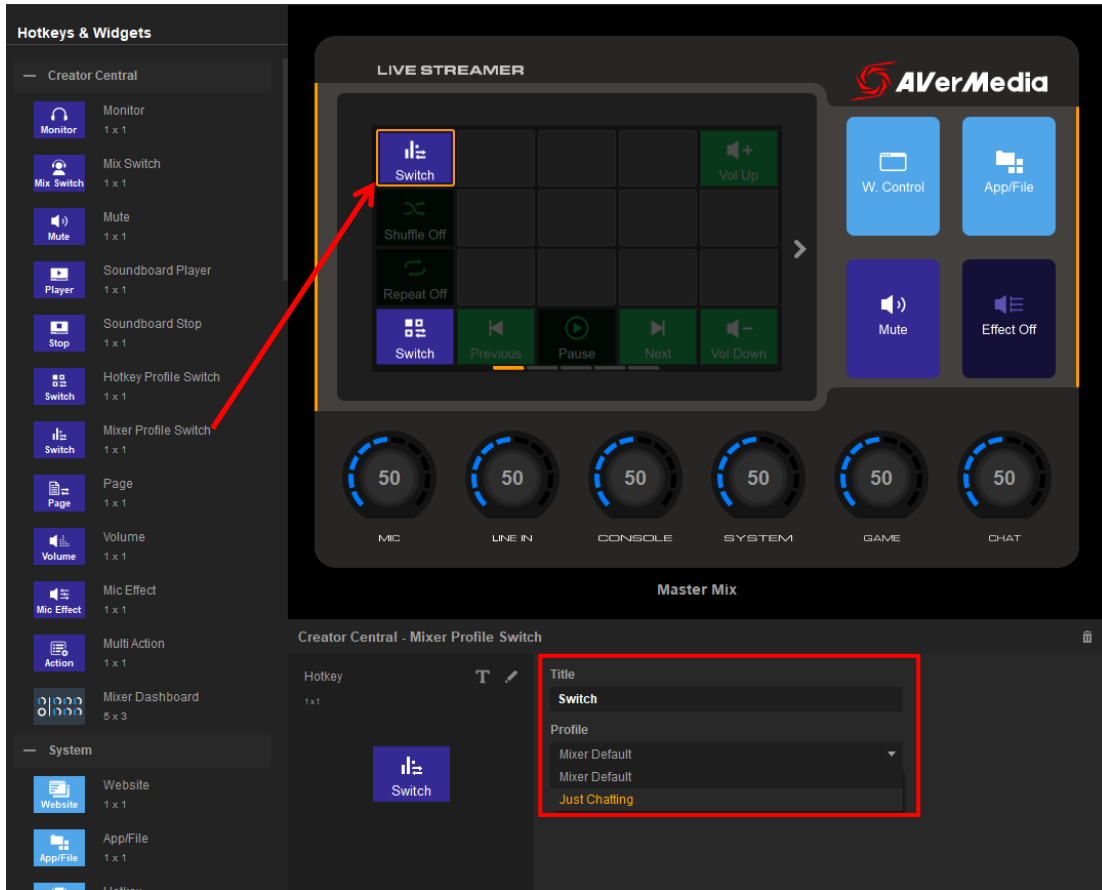
Audio Profiles

You can add various audio profiles for different situations. These profiles will store all your audio settings.

To create a new profile, click the “+” icon, type the name of this new profile and select “OK”.

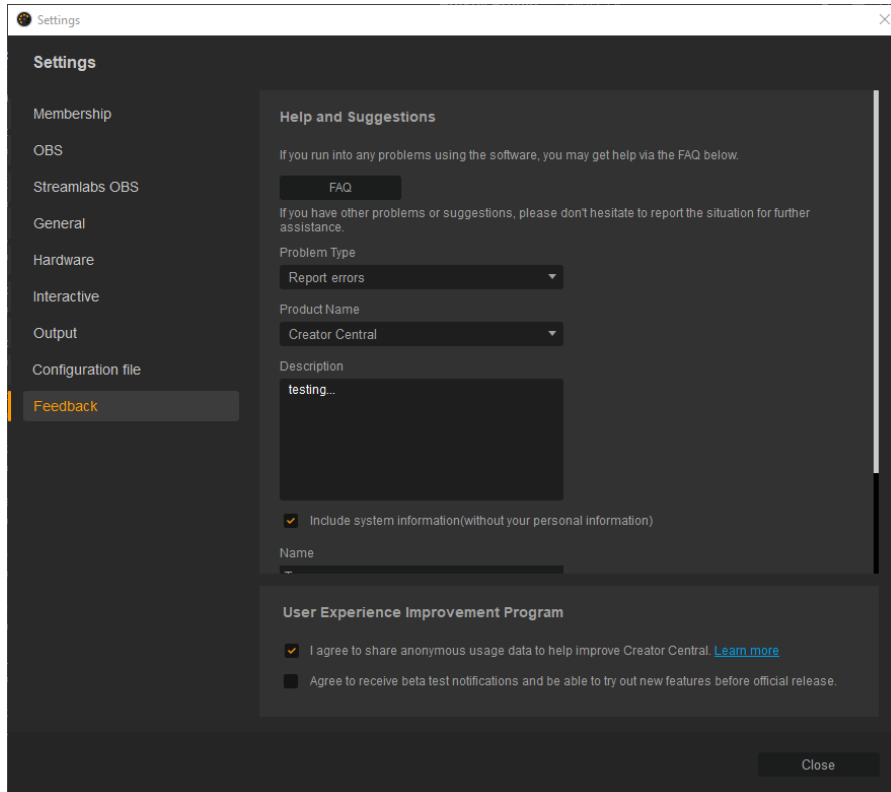


To quickly switch between profiles, add “Mixer Profile Switch”. And at the bottom, you will have a dropdown menu where you can choose which profile you want to switch to.



Feedback

If you encounter any problems or have suggestions while using Creator Central, please go to Settings > Feedback for instant FAQ and reporting assistance.



The screenshot shows the 'Settings' window with the 'Feedback' section selected in the left sidebar. The main content area is titled 'Help and Suggestions' and contains the following elements:

- A link to the 'FAQ' section.
- A text prompt: "If you have other problems or suggestions, please don't hesitate to report the situation for further assistance."
- A 'Problem Type' dropdown menu set to 'Report errors'.
- A 'Product Name' dropdown menu set to 'Creator Central'.
- A 'Description' text area containing the text 'testing...'.
- A checked checkbox for 'Include system information(without your personal information)'.
- A 'Name' input field.
- A 'User Experience Improvement Program' section with two options:
 - A checked checkbox for 'I agree to share anonymous usage data to help improve Creator Central. [Learn more](#)'.
 - An unchecked checkbox for 'Agree to receive beta test notifications and be able to try out new features before official release.'

A 'Close' button is located at the bottom right of the window.

