

Latitude 7320 Detachable

Setup and Specifications



Notes, cautions, and warnings

 **NOTE:** A NOTE indicates important information that helps you make better use of your product.

 **CAUTION:** A CAUTION indicates either potential damage to hardware or loss of data and tells you how to avoid the problem.

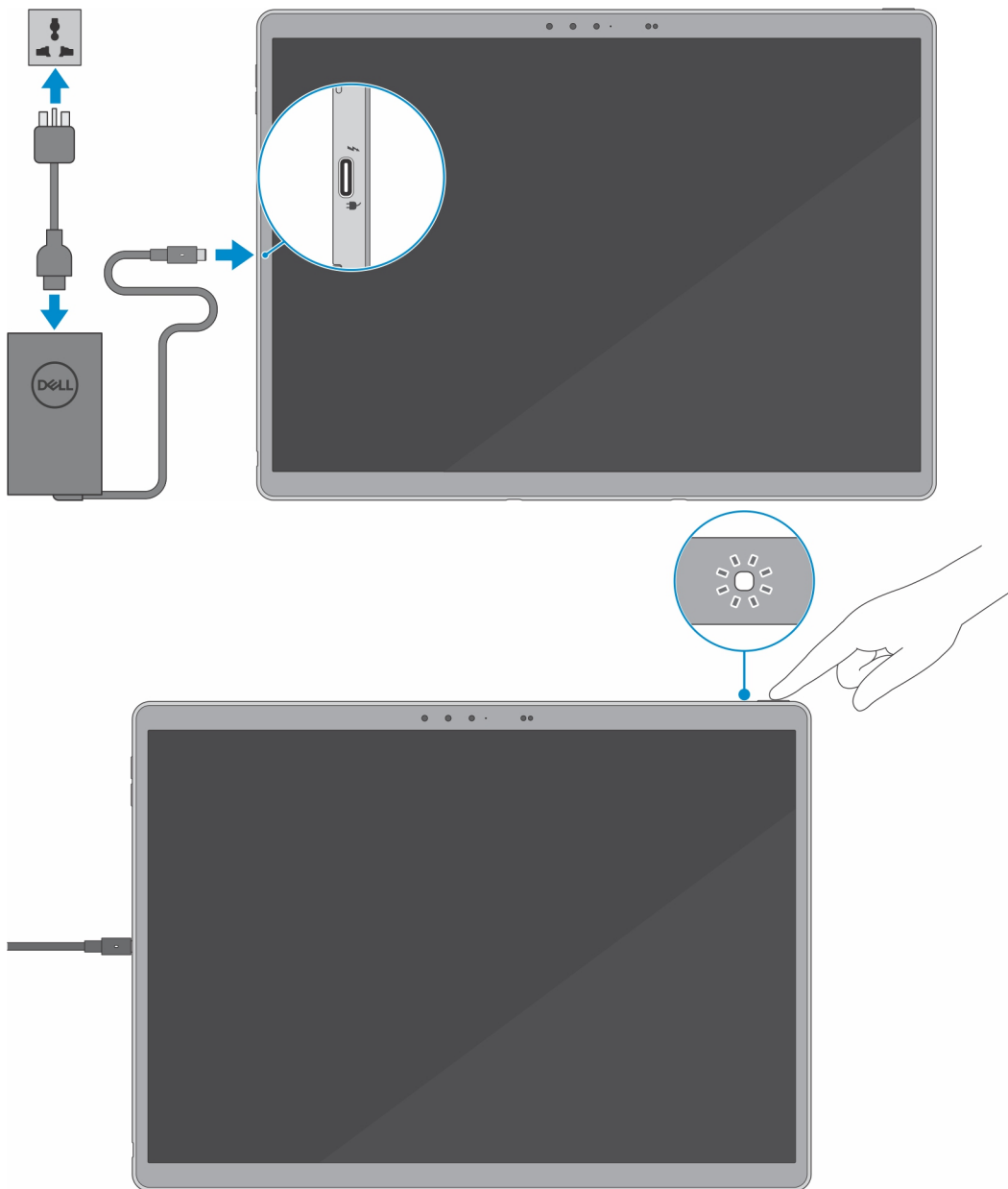
 **WARNING:** A WARNING indicates a potential for property damage, personal injury, or death.

| | |
|---|-----------|
| Chapter 1: Set up your Latitude 7320 Detachable..... | 4 |
| Chapter 2: Views of Latitude 7320 Detachable..... | 7 |
| Right..... | 7 |
| Left..... | 7 |
| Display..... | 8 |
| Back..... | 9 |
| Top..... | 9 |
| Bottom..... | 10 |
| Chapter 3: Keyboard shortcuts..... | 11 |
| Battery Charge and Status LED | 12 |
| Chapter 4: Specifications of Latitude 7320 Detachable..... | 13 |
| Dimensions and weight..... | 13 |
| Processor..... | 14 |
| Chipset..... | 14 |
| Operating system..... | 14 |
| Memory..... | 15 |
| External ports..... | 15 |
| Wireless module..... | 15 |
| WWAN module..... | 16 |
| Audio..... | 16 |
| Storage..... | 17 |
| Keyboard..... | 17 |
| Camera..... | 18 |
| Power adapter..... | 18 |
| Battery..... | 19 |
| Display..... | 20 |
| Fingerprint reader..... | 20 |
| GPU—Integrated..... | 21 |
| Computer environment..... | 21 |
| Sensor | 21 |
| Sensor and control specifications | 22 |
| Chapter 5: Dell low blue light display..... | 23 |
| Chapter 6: Getting help and contacting Dell..... | 24 |

Set up your Latitude 7320 Detachable

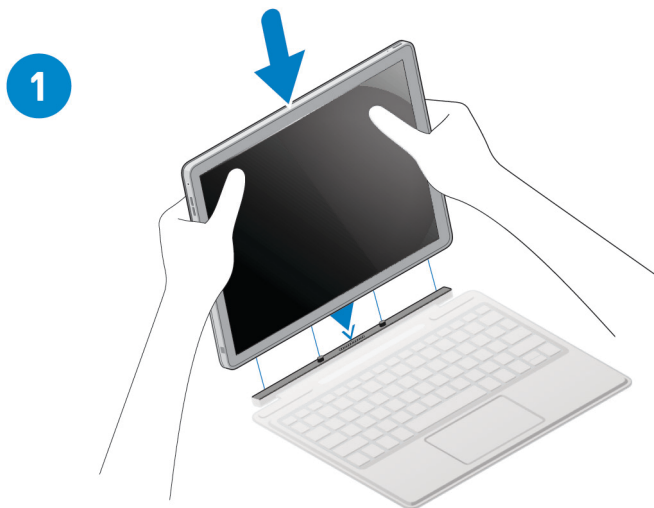
NOTE: The images in this document may differ from your computer depending on the configuration you ordered.

1. Connect the power adapter and press the power button.

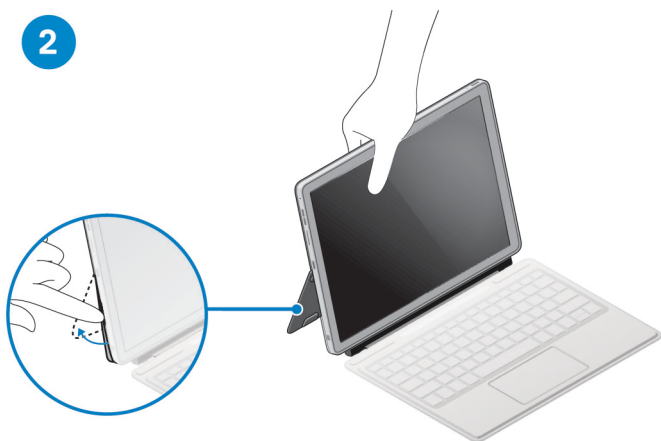


NOTE: The battery may go into power-saving mode during shipment to conserve charge on the battery. Ensure that the power adapter is connected to your computer when it is turned on for the first time.

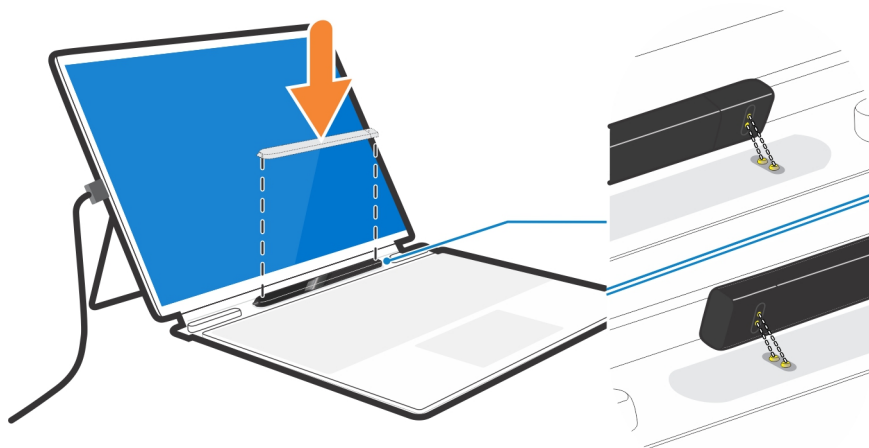
2. Connect the Latitude 7320 Detachable keyboard and deploy the kick stand.
 - a. Align the docking connectors on the Latitude 7320 Detachable, with the connectors on the Latitude 7320 Detachable keyboard.



- b. Dock the Latitude 7320 Detachable to the Latitude 7320 Detachable keyboard.
- Using your finger tips, deploy the kick stand from the recess on the computer.



3. Align the Latitude 7320 Detachable Active pen charging pins with the charging pins on the Latitude 7320 Detachable keyboard and dock it in the cradle.




i **NOTE:** The charging time for the Latitude 7320 Detachable Active pen is 30 seconds.

4. Finish Windows setup.

Follow the on-screen instructions to complete the setup. When setting up, Dell recommends that you:





- Connect to a network for Windows updates.

 **NOTE:** If connecting to a secured wireless network, enter the password for the wireless network access when prompted.

- If connected to the Internet, sign in with or create a Microsoft account. If not connected to the Internet, create an offline account.
- On the **Support and Protection** screen, enter your contact details.

5. Locate and use Dell apps from the Windows Start menu—Recommended.

Table 1. Locate Dell apps

| Resources | Description |
|--|--|
|  | <p>SupportAssist</p> <p>Proactively checks the health of your computer's hardware and software. The SupportAssist OS Recovery tool troubleshoots issues with the operating system. For more information, see the SupportAssist documentation at www.dell.com/support.</p> <p> NOTE: In SupportAssist, click the warranty expiry date to renew or upgrade your warranty.</p> |
|  | <p>Dell Update</p> <p>Updates your computer with critical fixes and latest device drivers as they become available. For more information about using Dell Update, see the knowledge base article SLN305843 at www.dell.com/support.</p> |
|  | <p>Dell Digital Delivery</p> <p>Download software applications, which are purchased but not pre-installed on your computer. For more information about using Dell Digital Delivery, see the knowledge base article 153764 at www.dell.com/support.</p> |

Views of Latitude 7320 Detachable

Topics:

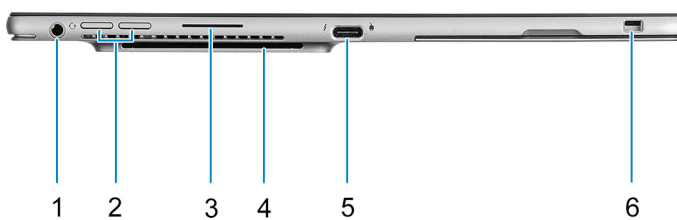
- Right
- Left
- Display
- Back
- Top
- Bottom

Right



1. USB4 Type-C ports with Thunderbolt4/PowerDelivery/DisplayPort
2. Speaker
3. Micro SIM card slot

Left



- | | |
|--|---|
| 1. Combo Mic/Headphone Jack | 2. Volume up/down button |
| 3. Speaker | 4. Contactless/Contacted smart card reader (optional) |
| 5. USB4 Type-C ports with Thunderbolt4/Power Delivery/ Display Port | 6. Wedge-shaped lock slot |

Display



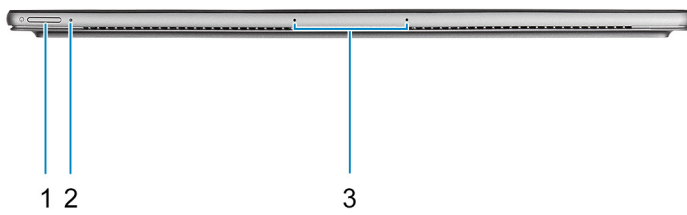
- | | |
|-------------------------|---------------------------------|
| 1. Ambient light sensor | 2. IR emitters |
| 3. IR/RGB camera | 4. Front/rear camera status LED |
| 5. Proximity sensor | 6. LCD panel |

Back



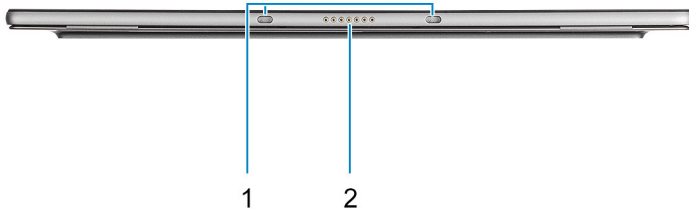
- 1. Fingerprint reader
- 2. NFC reader
- 3. Rear RGB camera
- 4. Kickstand

Top



- 1. Power button
- 2. Battery status/Diagnostics LED
- 3. Microphone

Bottom



1. Keyboard docking magnets
2. Pogo connector

Keyboard shortcuts

NOTE: Keyboard characters may differ depending on the keyboard language configuration. Keys used for shortcuts remain the same across all language configurations.

Some keys on your keyboard have two symbols on them. These keys can be used to type alternate characters or to perform secondary functions. The symbol shown on the lower part of the key refers to the character that is typed out when the key is pressed. If you press shift and the key, the symbol shown on the upper part of the key is typed out. For example, if you press **2**, **2** is typed out; if you press **Shift + 2**, **@** is typed out.

The keys F1-F12 at the top row of the keyboard are function keys for multi-media control, as indicated by the icon at the bottom of the key. Press the function key to invoke the task represented by the icon. For example, pressing F1 mutes the audio (refer to the table below).

However, if the function keys F1-F12 are needed for specific software applications, multi-media functionality can be disabled by pressing **Fn + Esc**. Subsequently, multi-media control can be invoked by pressing **Fn** and the respective function key. For example, mute audio by pressing **Fn + F1**.

NOTE: You can also define the primary behavior of the function keys (F1–F12) by changing **Function Key Behavior** in BIOS setup program.

Table 2. List of keyboard shortcuts

| Function key | Primary behavior | Function key | Secondary behavior |
|--------------|---|--------------|---|
| F1 | Mute audio | Fn + F1 | Operating system and application specific F1 behavior |
| F2 | Decrease volume | Fn + F2 | Operating system and application specific F2 behavior |
| F3 | Increase volume | Fn + F3 | Operating system and application specific F3 behavior |
| F4 | Mic Mute | Fn + F4 | Operating system and application specific F4 behavior |
| F5 | Keyboard backlight NOTE: Not applicable for non-backlight keyboard. | Fn + F5 | Operating system and application specific F5 behavior |
| F6 | Decrease screen brightness | Fn + F6 | Operating system and application specific F6 behavior |
| F7 | Increase screen brightness | | Operating system and application specific F7 behavior |
| F8 | Switch to external display | Fn + F8 | Operating system and application specific F8 behavior |
| F9 | Disable camera | Fn + F9 | Operating system and application specific F9 behavior |

Table 2. List of keyboard shortcuts (continued)

| Function key | Primary behavior | Function key | Secondary behavior |
|--------------|------------------|--------------|--|
| F10 | Print Screen | Fn + F10 | Operating system and application specific F10 behavior |
| F11 | Home | Fn + F11 | Operating system and application specific F11 behavior |
| F12 | End | Fn + F12 | Operating system and application specific F12 behavior |

The **Fn** key is also used with selected keys on the keyboard to invoke other secondary functions.

Table 3. Secondary behavior

| Function key | Behavior |
|--------------|---|
| Fn + Esc | Toggle Fn-key lock |
| Fn + PrtScr | Turn off/on wireless |
| Fn + B | Pause/Break |
| Fn + Insert | Sleep |
| Fn + S | Toggle scroll lock |
| Fn + H | Toggle between power and battery-status light/hard-drive activity light |
| Fn + R | System request |
| Fn + Ctrl | Open application menu |
| Fn + PgUp | Page up |
| Fn + PgDn | Page down |
| Fn + Home | Home |
| Fn + End | End |

Topics:

- [Battery Charge and Status LED](#)

Battery Charge and Status LED

Table 4. Battery Charge and Status LED Indicator

| Power Source | LED Behavior | System Power State | Battery Charge Level |
|--------------|--------------------------|--------------------|----------------------|
| AC Adapter | Off | S0 - S5 | Fully Charged |
| AC Adapter | Solid White | S0 - S5 | < Fully Charged |
| Battery | Off | S0 - S5 | 11-100% |
| Battery | Solid Amber (590+/-3 nm) | S0 - S5 | < 10% |

- S0 (ON) - System is turned on.
- S4 (Hibernate) - The system consumes the least power compared to all other sleep states. The system is almost at an OFF state, expect for a trickle power. The context data is written to hard drive.
- S5 (OFF) - The system is in a shutdown state.

Specifications of Latitude 7320 Detachable

Topics:

- Dimensions and weight
- Processor
- Chipset
- Operating system
- Memory
- External ports
- Wireless module
- WWAN module
- Audio
- Storage
- Keyboard
- Camera
- Power adapter
- Battery
- Display
- Fingerprint reader
- GPU—Integrated
- Computer environment
- Sensor
- Sensor and control specifications

Dimensions and weight

The following table lists the height, width, depth, and weight of your Latitude 7320 Detachable.

Table 5. Dimensions and weight

| Description | Values |
|------------------|--|
| Height: | |
| Front height | 8.44 mm (0.33 in.) |
| Rear height | 8.44 mm (0.33 in.) |
| Width | 288.42 mm (11.35 in.) |
| Depth | 207.90 mm (8.18 in.) |
| Weight (minimum) | 0.789 kg (1.7 lb) <i>i</i> NOTE: The weight of your computer depends on the configuration ordered and manufacturing variability. |

Processor

The following table lists the details of the processors supported by your Latitude 7320 Detachable.

Table 6. Processor

| Description | Option one | Option two | Option three | Option four |
|------------------------|--|--|--|--|
| Processor type | 11 th Generation Intel Core i3-1110G4 | 11 th Generation Intel Core i5-1130G7 | 11 th Generation Intel Core i5-1140G7 | 11 th Generation Intel Core i7-1180G7 |
| Processor wattage | 11 W | 12 W | 12 W | 12 W |
| Processor core count | 2 | 4 | 4 | 4 |
| Processor thread count | 4 | 8 | 8 | 8 |
| Processor speed | 1.80 GHz to 3.90 GHz | 1.10 GHz to 4.00 GHz | 1.10 GHz to 4.20 GHz | 1.30 GHz to 4.60 GHz |
| Processor cache | 6 MB | 8 MB | 8 MB | 12 MB |
| Integrated graphics | Intel UHD Graphics | Intel Iris X ^e Graphics | Intel Iris X ^e Graphics | Intel Iris X ^e Graphics |

Chipset

The following table lists the details of the chipset supported by your Latitude 7320 Detachable.

Table 7. Chipset

| Description | Values |
|----------------|---|
| Chipset | Intel |
| Processor | 11 th Generation Intel Core i3/i5/i7 |
| DRAM bus width | 64-bit |
| Flash EPROM | NA |
| PCIe bus | Up to Gen4 |

Operating system

Your Latitude 7320 Detachable supports the following operating systems:

- Windows 11 Home, 64-bit
- Windows 11 Pro, 64-bit
- Windows 11 Pro National Academic, 64-bit
- Windows 10 Home, 64-bit
- Windows 10 Pro, 64-bit

Memory

The following table lists the memory specifications of your Latitude 7320 Detachable.

Table 8. Memory specifications

| Description | Values |
|---------------------------------|---|
| Memory slots | onboard |
| Memory type | LPDDR4x |
| Memory speed | 4267 MHz |
| Maximum memory configuration | 16 GB |
| Minimum memory configuration | 4 GB |
| Memory size per slot | 4 GB, 8 GB, 16 GB |
| Memory configurations supported | <ul style="list-style-type: none">• 4 GB• 8 GB• 16 GB |

External ports

The following table lists the external ports of your Latitude 7320 Detachable.

Table 9. External ports

| Description | Values |
|---------------------|---|
| Network port | NA |
| USB ports | <ul style="list-style-type: none">• 2 USB4 Type-C ports with Thunderbolt4/Power Delivery/Display Port |
| Audio port | 1 Combo Mic/Headphone Jack |
| Video port | DisplayPort through USB4 Type-C port |
| Media-card reader | Micro SIM card |
| Power-adaptor port | USB4 Type-C |
| Security-cable slot | Wedge shaped Lock slot. |

Wireless module

The following table lists the Wireless Local Area Network (WLAN) module supported on your Latitude 7320 Detachable.

Table 10. Wireless module specifications


| Description | Values |
|---------------|-----------------------------------|
| Model number | Intel Dual Band Wireless-AX201D2W |
| Transfer rate | 2400 Mbps |

Table 10. Wireless module specifications (continued)

| Description | Values |
|---------------------------|--|
| Frequency bands supported | 2.4/ 5 GHz |
| Wireless standards | <ul style="list-style-type: none"> • Wi-Fi 802.11a/b/g • Wi-Fi 4 (Wi-Fi 802.11n) • Wi-Fi 5 (Wi-Fi 802.11ac) • Wi-Fi 6 (Wi-Fi 802.11ax) |
| Encryption | <ul style="list-style-type: none"> • 64-bit/128-bit WEP • AES-CCMP • TKIP |
| Bluetooth | Bluetooth 5.1 |

WWAN module

Table 11. WWAN module specifications

| Description | Values |
|--|--|
| Model number | Qualcomm® Snapdragon™ X20 Global Gigabit LTE, CAT16 |
| Transfer rate | Up to 867 Mbps DL/50 Mbps UL (Cat 16) |
| Frequency bands supported | (1/2/3/4/5/7/8/12/13/14/17/18/19/20/25/26/28/29/30/32 /38/39/40/41/42/43/46/48/66), HSPA+ (1/2/4/5/6/8/9/19) |
| Wireless standards | Not Applicable |
| Encryption | Not Applicable |
| Bluetooth | Not Applicable |
|  NOTE: For instructions on how to find your computer's IMEI (International Mobile Station Equipment Identity) number, see the knowledge base article 000143678 at www.dell.com/support . | |

Audio

The following table lists the audio specifications of your Latitude 7320 Detachable.

Table 12. Audio specifications

| Description | Values |
|----------------------------|-------------------------|
| Audio controller | Realtek ALC711 |
| Stereo conversion | Supported |
| Internal audio interface | Intel Soundwire |
| External audio interface | Universal Audio Jack |
| Number of speakers | 2 Stereo speakers |
| Internal-speaker amplifier | 2 W average per channel |

Table 12. Audio specifications (continued)

| Description | Values |
|--------------------------|--|
| External volume controls | through dedicated volume button |
| Speaker output: | |
| Average speaker output | 2 W per channel |
| Peak speaker output | 2.5 W per channel |
| Subwoofer output | Not supported |
| Microphone | 2 Omni-directional Noise Canceling Microphones |

Storage

This section lists the storage options on your Latitude 7320 Detachable.

Your computer supports one of the following configurations:

- One M.2 2230 solid-state drive
- One M.2 2230 PCIe/NVMe Class 35 SED

Table 13. Storage specifications

| Storage type | Interface type | Capacity |
|----------------------------|--------------------|------------|
| M.2 2230, Class 35 SSD | Gen 3 PCIe x4 NVMe | Up to 1 TB |
| M.2 2230, Class 35 SED SSD | Gen 3 PCIe x4 NVMe | 256 GB |

Keyboard

The following table lists the keyboard specifications of your Latitude 7320 Detachable.

Table 14. Keyboard specifications

| Description | Values |
|--------------------|---|
| Keyboard type | <ul style="list-style-type: none"> • Dell Latitude 7320 Detachable Travel keyboard |
| Keyboard layout | QWERTY |
| Number of keys | <ul style="list-style-type: none"> • United States and Canada: 80 keys • United Kingdom: 81 keys • Japan: 84 keys |
| Keyboard size | X=288.42 mm (11.36 inches) Y=228.14 mm (8.98 inches) |
| Keyboard shortcuts | <p>Some keys on your keyboard have two symbols on them. These keys can be used to type alternate characters or to perform secondary functions. To type the alternate character, press Shift and the desired key. To perform secondary functions, press Fn and the desired key.</p> <p>NOTE: You can define the primary behavior of the function keys (F1–F12) changing Function Key Behavior in BIOS setup program.</p> |

Camera

The following table lists the camera specifications of your Latitude 7320 Detachable.

Table 15. Camera specifications

| Description | | Values |
|-----------------------------|-----------------|--|
| Number of cameras | | Two |
| Camera type | | 8 MP RGB Camera |
| Camera location | | World Facing Camera |
| Camera sensor type | | <ul style="list-style-type: none"> • CMOS sensor technology • Proximity sensor |
| Camera resolution: | | |
| | Still image | 8.03 megapixel |
| | Video | 1920 x 1080 at 30 fps |
| Infrared camera resolution: | | |
| | Still image | 8.03 megapixel |
| | Video | 1920 x 1080 at 30 fps |
| Diagonal viewing angle: | | |
| | Camera | 88.9 degrees |
| | Infrared camera | 86.7 degrees |

Power adapter

The following table lists the power adapter specifications of your Latitude 7320 Detachable.

Table 16. Power adapter specifications

| Description | Option one | Option two | Option three |
|-----------------------------|---|---|--|
| Type | 65 W, USB Type-C | 45 W, USB Type-C SFF | 60 W, USB Type-C Ultra SFF |
| Input voltage | 100 VAC–240 VAC | 100 VAC–240 VAC | 100 VAC–240 VAC |
| Input frequency | 50 Hz–60 Hz | 50 Hz–60 Hz | 50 Hz–60 Hz |
| Input current (maximum) | 1.70 A | 1.30 A | 1.60 A |
| Output current (continuous) | <ul style="list-style-type: none"> • 20 V/3.25 A (Continuous) • 15 V/3 A (Continuous) • 9.0 V/3 A (Continuous) • 5.0 V/3 A (Continuous) | <ul style="list-style-type: none"> • 20 V/2.25 A (Continuous) • 15 V/3 A (Continuous) • 9.0 V/3 A (Continuous) • 5.0 V/3 A (Continuous) | <ul style="list-style-type: none"> • 20 V/3 A (Continuous) • 15 V/3 A (Continuous) • 9.0 V/3 A (Continuous) • 5.0 V/3 A (Continuous) |
| Rated output voltage | <ul style="list-style-type: none"> • 20 VDC • 15 VDC • 9 VDC • 5 VDC | <ul style="list-style-type: none"> • 20 VDC • 15 VDC • 9 VDC • 5 VDC | <ul style="list-style-type: none"> • 20 VDC • 15 VDC • 9 VDC • 5 VDC |


Table 16. Power adapter specifications (continued)

| Description | | Option one | Option two | Option three |
|--------------------|-----------|--------------------------------|--------------------------------|--------------------------------|
| Temperature range: | | | | |
| | Operating | 0°C to 40°C (32°F to 104°F) | 0°C to 40°C (32°F to 104°F) | 0°C to 40°C (32°F to 104°F) |
| | Storage | -40°C to 70°C (-40°F to 158°F) | -40°C to 70°C (-40°F to 158°F) | -40°C to 70°C (-40°F to 158°F) |

Battery

The following table lists the battery specifications of your Latitude 7320 Detachable.

Table 17. Battery specifications

| Description | | Option one | Option two |
|---|-----------|--|--|
| Battery type | | 2-Cell, 40 WHr, Polymer | 2-Cell, 40 WHr, Long Cycle Life, Polymer (optional) |
| Battery voltage | | 8.90 VDC | 8.90 VDC |
| Battery weight (maximum) | | 0.16 kg (0.35 lb) | 0.16 kg (0.35 lb) |
| Battery dimensions: | | | |
| | Height | 4.80 mm (0.188 in.) | 4.80 mm (0.19 in.) |
| | Width | 81.20 mm (3.19 in.) | 81.20 mm (3.19 in.) |
| | Depth | 185 mm (7.28 in.) | 185 mm (7.28 in.) |
| Temperature range: | | | |
| | Operating | 0°C to 45°C (32°F to 113°F) | 0°C to 45°C (32°F to 113 °F) |
| | Storage | -20°C to 65°C (-4°F to 149°F) | -20°C to 65°C (-4°F to 149 °F) |
| Battery operating time | | Varies depending on operating conditions and can significantly reduce under certain power-intensive conditions. | Varies depending on operating conditions and can significantly reduce under certain power-intensive conditions. |
| Battery charging time (approximate) <i>i</i> NOTE: Control the charging time, duration, start and end time, and so on using the Dell Power Manager application. For more information on the Dell Power Manager see, <i>Me and My Dell</i> on www.dell.com . | | 4 hours (when the computer is off) <i>i</i> NOTE: Control the charging time, duration, start and end time, and so on using the Dell Power Manager application. For more information on the Dell Power Manager see, <i>Me and My Dell</i> on www.dell.com/ | 4 hours (when the computer is off) <i>i</i> NOTE: Control the charging time, duration, start and end time, and so on using the Dell Power Manager application. For more information on the Dell Power Manager see, <i>Me and My Dell</i> on www.dell.com/ |
| Coin-cell battery | | Not supported | Not supported |
|  CAUTION: Operating and storage temperature ranges may differ among components, so operating or storing the device outside these ranges may impact the performance of specific components. | | | |

Display

The following table lists the display specifications of your Latitude 7320 Detachable.

Table 18. Display specifications

| Description | | Values |
|---|----------|--|
| Display type | | Full High Definition (FHD+) |
| Display-panel technology | | Wide Viewing Angle (WVA) |
| Display-panel dimensions (active area): | | |
| | Height | 182.98 mm (7.20 in.) |
| | Width | 274.46 mm (10.80 in.) |
| | Diagonal | 329.86 mm (12.98 in.) |
| Display-panel native resolution | | 1920 x 1280 |
| Luminance (typical) | | 500 nits |
| Megapixels | | 2.45 |
| Color gamut | | 100% (sRGB) |
| Pixels Per Inch (PPI) | | 177 |
| Contrast ratio (min) | | 1200:1 |
| Response time (max) | | 35 ms |
| Refresh rate | | 60 Hz |
| Horizontal view angle | | 80 +/- degrees |
| Vertical view angle | | 80 +/- degrees |
| Pixel pitch | | 0.1429 x 0.1429 |
| Power consumption (maximum) | | 2.63 W |
| Anti-glare vs glossy finish | | Anti-Reflection / Anti-Smudge coating / DXC (Durable AR Coating) |
| Touch options | | Yes |

Fingerprint reader

The following table lists the fingerprint-reader specifications of your Latitude 7320 Detachable.

Table 19. Fingerprint reader specifications

| Description | Values |
|--------------------------------------|------------|
| Fingerprint-reader sensor technology | Capacitive |
| Fingerprint-reader sensor resolution | 363 dpi |

Table 19. Fingerprint reader specifications (continued)

| Description | Values |
|--------------------------------------|----------|
| Fingerprint-reader sensor pixel size | 104 x 86 |

GPU—Integrated

The following table lists the specifications of the integrated Graphics Processing Unit (GPU) supported by your Latitude 7320 Detachable.

Table 20. GPU—Integrated

| Controller | External display support | Memory size | Processor |
|------------------------------------|--|----------------------|----------------------------------|
| Intel UHD Graphics | DisplayPort through USB 3.2 Gen1 Type-C port | Shared system memory | 11th Generation Intel Core i3 |
| Intel Iris X ^e Graphics | DisplayPort through USB 3.2 Gen1 Type-C port | Shared system memory | 11th Generation Intel Core i5/i7 |

Computer environment

Airborne contaminant level: G1 as defined by ISA-S71.04-1985

Table 21. Computer environment

| Description | Operating | Storage |
|-----------------------------|--|--|
| Temperature range | 0°C to 35°C (32°F to 95°F) | -40°C to 65°C (-40°F to 149°F) |
| Relative humidity (maximum) | 10% to 90% (non-condensing) | 0% to 95% (non-condensing) |
| Vibration (maximum)* | 0.66 GRMS | 1.30 GRMS |
| Shock (maximum) | 110 G† | 160 G† |
| Altitude (maximum) | -15.2 m to 3048 m (4.64 ft to 5518.4 ft) | -15.2 m to 10668 m (4.64 ft to 19234.4 ft) |

* Measured using a random vibration spectrum that simulates user environment.

† Measured using a 2 ms half-sine pulse when the hard drive is in use.

Sensor

The following table lists the sensor of your Latitude 7320 Detachable.

Table 22. Sensor

| Sensor support |
|--------------------------|
| Gyroscope |
| eCompass/Magnetometer |
| Accelerometer |
| GPS (via WWAN Card only) |
| Ambient Light Sensor |


Table 22. Sensor (continued)

| Sensor support |
|---|
| Adaptive Thermal Performance (via Gyroscope/Accelerometer) |
| Dell ExpressSign-In 1.0 (via Proximity Sensor) |
| Dell ExpressSign-in 2.0 (via Intel Camera Sensing Technology) |
| Wake/Power on with lid open |

Sensor and control specifications

Hall Effect sensor is located on System board

Dell low blue light display

 **WARNING: Prolonged exposure to blue light from the display may lead to long-term effects such as eye strain, eye fatigue, or damage to the eyes.**

Blue light is a color in the light spectrum which has a short wavelength and high energy. Chronic exposure to blue light, particularly from digital sources, may disrupt sleep patterns and cause long-term effects such as eye strain, eye fatigue, or damage to the eyes.

The display on this computer is designed to minimize blue light and complies with TÜV Rheinland's requirement for low blue light displays.

Low blue light mode is enabled at the factory, so no further configuration is necessary.

To reduce the risk of eye strain, it is also recommended that you:


- Position the display at a comfortable viewing distance between 20 and 28 inches (50 and 70 cm) from your eyes.
- Blink frequently to moisten your eyes, wet your eyes with water, or apply suitable eye drops.
- Look away from your display, and gaze at a distant object at 20 ft (609.60 cm) away for at least 20 seconds during each break.
- Take an extended break for 20 minutes every two hours.

Getting help and contacting Dell

Self-help resources


You can get information and help on Dell products and services using these self-help resources:


Table 23. Self-help resources

| Self-help resources | Resource location |
|--|---|
| Information about Dell products and services | www.dell.com |
| Tips |  |
| Contact Support | In Windows search, type <code>Contact Support</code> , and press Enter. |
| Online help for operating system | www.dell.com/support/windows www.dell.com/support/linux |
| Troubleshooting information, user manuals, setup instructions, product specifications, technical help blogs, drivers, software updates, and so on. | www.dell.com/support |
| Dell knowledge base articles for a variety of computer concerns. | <ol style="list-style-type: none"> 1. Go to https://www.dell.com/support/home/?app=knowledgebase. 2. Type the subject or keyword in the Search box. 3. Click Search to retrieve the related articles. |

Contacting Dell

To contact Dell for sales, technical support, or customer service issues, see www.dell.com/contactdell.

 **NOTE:** Availability varies by country and product, and some services may not be available in your country.

 **NOTE:** If you do not have an active internet connection, you can find contact information on your purchase invoice, packing slip, bill, or Dell product catalog.