



IP Cameras

5MP models	2.1MP/1080p models with microphone built-in	2.1MP/1080p models
DWC-MV75Wi28TW	DWC-MV72Wi28ATW	DWC-MV72Di4TW
DWC-MV75Wi4TW	DWC-MV72Wi4ATW	DWC-MV72Di28T
DWC-MV75Wi6TW		DWC-MV72Wi28TW
		DWC-MV72Wi4TW
		DWC-MV72Wi6TW



**Default Login Information: admin | admin**

When logging into the camera for the first time, you will be prompted to set up a new password. You can set the new password using the DW<sup>®</sup> IP Finder™ software or directly from the camera's browser menu.

**WHAT'S IN THE BOX**

Quick Setup and Installation Guide		1 set	Bolt and Nuts 2pcs		1 set
Mounting Templates		1	Screws and Plastic Anchors - 2pcs		1 set
Waterproof Cap		1 set	Star Wrench		1

**NOTE:** Download all your support materials and tools in one place

- Go to: <http://www.digital-watchdog.com/resources>
- Search your product by entering the part number in the 'Search by Product' search bar. Results for applicable part numbers will populate automatically based on the part number you enter.
- Click 'Search'. All supported materials, including manuals and quick start guide (QSGs) will appear in the results.



**Attention:** This document is intended to serve as a quick reference for the initial set-up. It is recommended that the user read the entire instruction manual for complete and proper installation and usage.

**STEP 1 - PREPARING TO MOUNT THE CAMERA**

- The mounting surface must withstand five times the camera weight.
- Do not let the cables get caught in improper places or the electric line cover can be damaged. This may cause a short or fire.
- For the installation process, remove the dome cover from the camera module by loosening the three (3) screws on the dome. Use the wrench provided with the camera.
- Using the mounting template sheet or the camera itself, mark and drill the necessary holes in the wall or ceiling.

**STEP 2 - CABLING THE CAMERA TO EXTERNAL DEVICES**

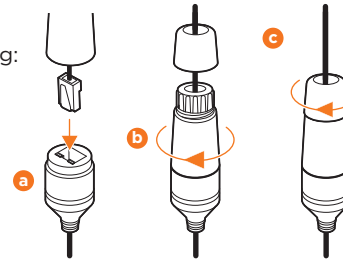
Pass the wires through the mount bracket and make all necessary connections.

- NETWORK CONNECTIONS** - If you are using a PoE switch, connect the camera using an Ethernet cable for both data and power.
- NETWORK CONNECTIONS** - If you are using a non-PoE switch, connect the camera to the switch using an Ethernet cable for data transmission and use a power adapter to power the camera.

Models	Power requirements	Power consumption
DWC-MV72Di4TW, DWC-MV72Di28T	DC 12V, PoE IEEE 802.3af Class2. (Adapter not included)	DC12V: max 3.7W PoE: max 5.4W
DWC-MV72Wi28TW, DWC-MV72Wi4TW, DWC-MV72Wi6TW, DWC-MV72Wi28ATW, DWC-MV72Wi4ATW	DC 12V, PoE IEEE 802.3af Class2. (Adapter not included)	DC12V: max 3.7W PoE: max 5.5W
DWC-MV75Wi28TW, DWC-MV75Wi4TW, DWC-MV75Wi6TW	DC 12V, PoE IEEE 802.3af Class3. (Adapter not included)	DC12V: max 6W PoE: max 7.2W

**STEP 3 - INSTALLING THE CAMERA**

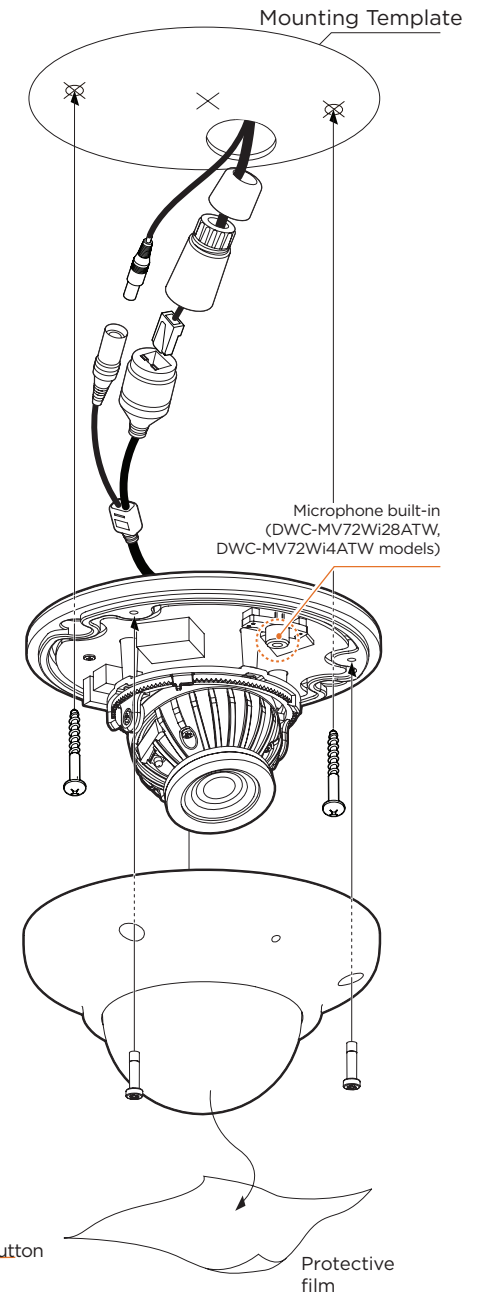
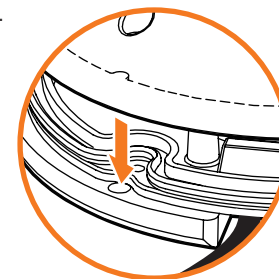
- Attach the main body to the mount bracket by tightening the lock screw.
- To use the camera's waterproof wiring:
  - Install the LAN cable into **a**.
  - b** will be assembled to **a** with a 1/4 turn.
  - Thread **c** tightly to **b**.



**NOTE:** To ensure moisture seal, make sure the o-ring is in place between **a** and **b**. In extreme environments use of an outdoor rated sealer is recommended.

**NOTE:** When using the waterproof cap, crimp the RJ45 connector after passing the cable through the waterproof cap.

- The camera is equipped with a manual IR activation button. You can choose to disable the camera's IR LEDs when the installation environment requires so.
- Adjust the camera's lens position by rotating the camera on its three-axis gimbal.
- When assembling the dome back on the camera, align the screw holes in the dome and the camera's base.
- When the installation is complete, remove the dome's protective film.

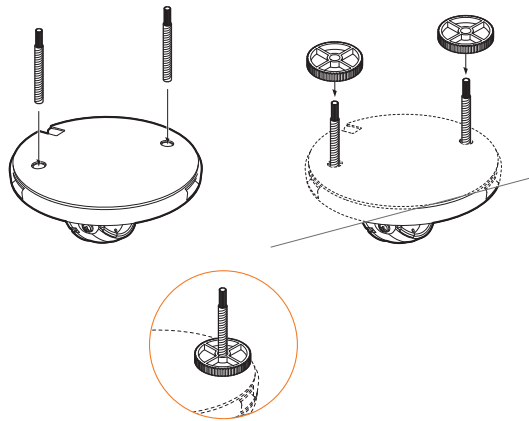


**Resetting the camera:** To reset the camera's settings, including the network settings, use the tip of a paper clip or a pencil. Press the reset button for five (5) seconds.

**STEP 3 – INSTALLING THE CAMERA (cont.)**

Installation using the mounting bolt and screws

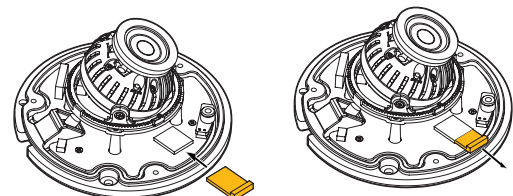
- Using the mounting template, mark and drill the necessary holes on the mounting surface.
- Secure the two long mounting screws to the camera's base.
- Pass the wires through and make all the necessary connections.
- Rotate the locking disks over the screws until the camera holds tightly from the mounting surface.



**STEP 4 – MANAGING THE SD CARD**

The following models include a local SD card slot: DWC-MV72Wi28ATW, DWC-MV72Wi4ATW, DWC-MV72Wi28TW, DWC-MV72Wi4TW, DWC-MV72Wi6TW, DWC-MV75Wi28TW, DWC-MV75Wi4TW, DWC-MV75Wi6TW

- To install the camera's SD Card, locate the SD card slot in the back of the camera module.
- Insert a class 10 SD card into the SD card slot by pressing the SD card slot.
- To remove the SD Card, press the card inward to release from the card slot.



Insert SD Card

Remove SD Card

**STEP 5 – DW® IP FINDER™**

Use the DW® IP Finder™ software to scan the network and detect all MEGApix® cameras, set the camera's network settings, or access the camera's web client.

Thumbnail view  
Select network to scan  
Filter results  
Scan network  
Show/hide thumbnail view  
Refresh thumbnail view  
Bulk IP assignment  
Bulk password assignment  
Firmware upgrade

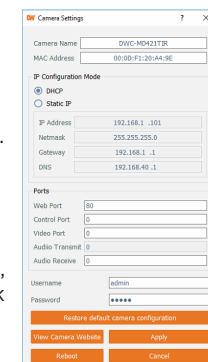
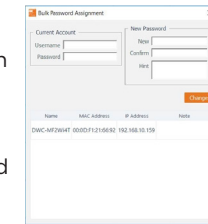
All  
 Thumbnail  
 Refresh Thumbnail  
 Bulk IP Assignment  
 Bulk Password Assignment  
 FW Upgrade

Thumbnail	Name	IP Address	Model	MAC Address	Netmask	Gateway	Port	DHCP	Version	Ping Test	IP Conf.	Uptime
	DWC-MP7230K	192.168.10.34	DWC-MP7230K	00:07:06:19:10:1A	255.255.255.0	192.168.10.1	80	Disabled	1.9.94_K2_H8888	Ping	OK	28day 14hrs
	DWC-MP7230K	192.168.10.40	DWC-MP7230K	00:07:06:19:10:1A	255.255.255.0	192.168.10.1	80	Disabled	A2.01.02_20180619	Ping	OK	28day 14hrs
	DWC-MP7230K	192.168.10.41	DWC-MP7230K	00:07:06:19:10:1A	255.255.255.0	192.168.10.1	80	Disabled	A3.01.03_20180619	Ping	OK	28day 14hrs
	DWC-MP7230K	192.168.10.42	DWC-MP7230K	00:07:06:19:10:1A	255.255.255.0	192.168.10.1	80	Disabled	A3.01.03_20180619	Ping	OK	28day 14hrs
	DWC-MP7230K	192.168.10.43	DWC-MP7230K	00:07:06:19:10:1A	255.255.255.0	192.168.10.1	80	Disabled	A3.01.03_20180619	Ping	OK	28day 14hrs
	DWC-MP7230K	192.168.10.44	DWC-MP7230K	00:07:06:19:10:1A	255.255.255.0	192.168.10.1	80	Disabled	A3.01.03_20180619	Ping	OK	28day 14hrs
	DWC-MP7230K	192.168.10.45	DWC-MP7230K	00:07:06:19:10:1A	255.255.255.0	192.168.10.1	80	Disabled	A3.01.03_20180619	Ping	OK	28day 14hrs
	DWC-MP7230K	192.168.10.46	DWC-MP7230K	00:07:06:19:10:1A	255.255.255.0	192.168.10.1	80	Disabled	A3.01.03_20180619	Ping	OK	28day 14hrs
	DWC-MP7230K	192.168.10.47	DWC-MP7230K	00:07:06:19:10:1A	255.255.255.0	192.168.10.1	80	Disabled	A3.01.03_20180619	Ping	OK	28day 14hrs
	DWC-MP7230K	192.168.10.48	DWC-MP7230K	00:07:06:19:10:1A	255.255.255.0	192.168.10.1	80	Disabled	A3.01.03_20180619	Ping	OK	28day 14hrs
	DWC-MP7230K	192.168.10.49	DWC-MP7230K	00:07:06:19:10:1A	255.255.255.0	192.168.10.1	80	Disabled	A3.01.03_20180619	Ping	OK	28day 14hrs

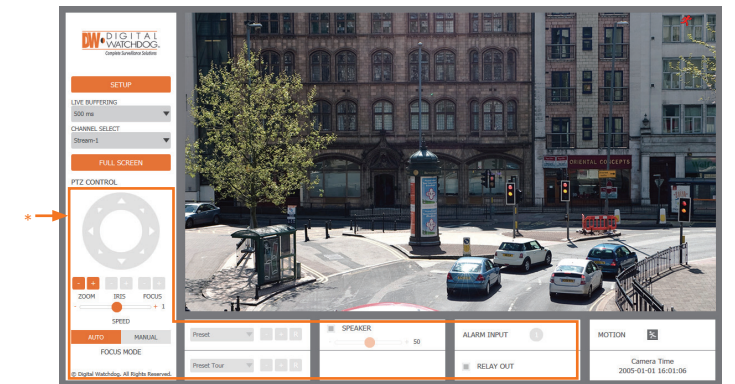
DHCP status  
 Firmware version  
 Camera's uptime  
 Open IP configuration settings  
 Ping camera  
 Port information  
 Gateway address  
 Netmask address  
 Camera's MAC address  
 Part number  
 Camera's IP address  
 Camera's name

**Network Setup**

- To install the DW® IP Finder™, go to <http://www.digital-watchdog.com>
  - Enter "DW® IP Finder" on the search box at the top of the page.
  - Go to the "Software" tab on the DW® IP Finder™ page to download the installation file.
  - Follow the installation to install the DW® IP Finder™. Open the DW® IP Finder™ and click 'Scan Devices'. It will scan the selected network for all supported devices and list the results in the table. During the scan, the DW® logo will turn gray.
- Select DHCP to allow the camera to receive its IP address automatically from the DHCP server.
  - Select "Static" to manually enter the camera's IP address, (Sub)Netmask, Gateway and DNS information.
    - \* The camera's IP must be set to Static if connecting to Spectrum® IPVMS
  - Contact your network administrator for more information.
  - Default TCP/IP information: DHCP
- When connecting to the camera for the first time, a password must be set. To set up a password for your new camera:
    - Check the box next to your new camera from the IP Finder's search results. You can select multiple cameras.
    - Click "Bulk Password Assign" on the left.
    - In the pop-up window, enter admin/ admin in the current username and password fields. Enter a new username and password to the right.
    - Press "change" to apply all changes.
  - Select a camera from the list by double-clicking on the camera's image or clicking on the 'Click' button under the IP Conf. column. The pop-up window will show the camera's current network settings, allowing admin users to adjust the settings as needed.
  - To access the camera's web page, go to the IP Config page and click on the 'View Camera Website'.
  - To save the changes made to the camera's setting, input the username and password of the camera and click Apply.



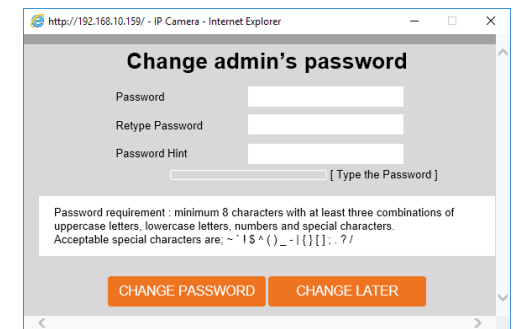
**STEP 6 – WEB VIEWER**



Once the camera's network settings have been setup properly, you can access the camera's web viewer using the DW® IP Finder™.

To open the camera's web viewer:

- Find the camera using the DW® IP Finder™.
  - Double-click on the camera's view in the results table.
  - Press the 'View Camera Website'. The camera's web viewer will open up in your default web browser.
  - Enter the camera's username and password you setup in the DW® IP Finder™. If you did not setup a new username and password via the DW® IP Finder™, you will not be able to view video from the camera. A message will direct you to setup a new password for the camera to view video.
- When accessing the camera for the first time, install the VLC player for web files to view video from the camera.



**NOTE:** 32bit version of the VLC player must be installed. If you are using a 64bit system, uninstall the previous 64bit version and reinstall using the 32bit version.

**NOTE:** Some menu options may not be available based on the camera model. See the full manual for more information.