

SAMSUNG

USER MANUAL

SM-R175

English (CA). 01/2020. Rev.1.0

www.samsung.com

Table of Contents

Basics

- 3 Read me first
- 4 About the Galaxy Buds+
- 5 Device layout and functions
- 8 Preparing the earbuds for use
- 10 Battery
- 16 Battery indicator lights identification

Using the earbuds

- 18 Connecting the earbuds to a mobile device
- 24 Wearing the earbuds
- 25 Using the touchpad
- 28 Using Bixby
- 29 Listening to music
- 30 Using the equaliser
- 31 Using call features
- 32 Using ambient sound mode

Galaxy Wearable App

- 34 Introduction
- 35 Connecting and disconnecting the earbuds
- 36 Viewing Galaxy Buds+ status and customising settings

Appendix

- 39 Troubleshooting
- 42 Updating the earbuds' software with the Galaxy Buds Manager on your computer
- 43 Managing the Galaxy Buds+
- 45 Restarting the earbuds
- 45 Removing the battery

Basics

Read me first

Please read this manual before using this device to ensure safe and proper use.

- Descriptions are based on the device's default settings.
- Some content may differ from your device depending on the region, model specifications, or device's software. Images may differ in appearance from the actual product. Content is subject to change without prior notice.
- Before using other mobile devices, make sure they are compatible with the device. Visit www.samsung.com/ca to see the specifications of compatible mobile devices.
- Be careful to not get the device wet while using it. The device could malfunction if it is damaged by water. Do not wear the device during activities such as showering or swimming. Doing so can damage the device.
- Modifying the device's operating system or installing softwares from unofficial sources may result in device malfunction and data corruption or loss. These actions are violations of your Samsung licence agreement and will void your warranty.
- Some functions may not work as described in this manual depending on the maker and model of the mobile device you connect to the device.
- This product includes certain free/open source software. To see the instructions for viewing the open source licence, go to the Samsung website opensource.samsung.com.

Instructional icons



Warning: situations that could cause injury to yourself or others



Caution: situations that could cause damage to your device or other equipment



Notice: notes, usage tips, or additional information

About the Galaxy Buds+

Galaxy Buds+ are wireless earbuds that connect to your device and allow you to listen to music or answer incoming calls while doing other activities, such as working out.



Do not wear the earbuds in high-traffic areas, such as roads or crosswalks. Doing so may result in accidents due to slowed reaction times.



Device layout and functions

Package contents

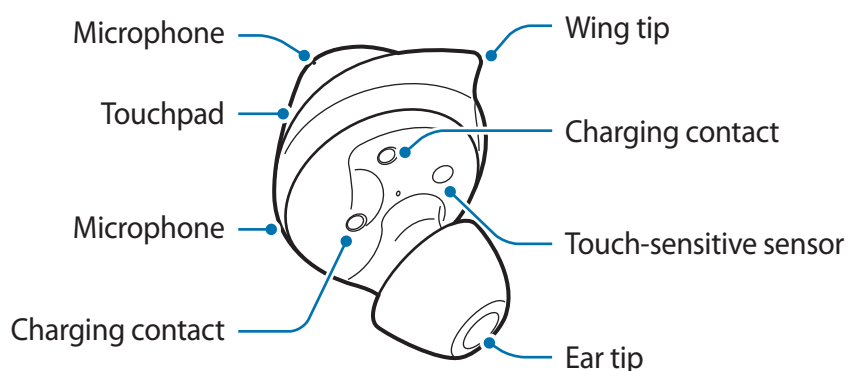
Refer to the quick start guide for package contents.



- The items supplied with the Galaxy Buds+, available accessories, and their images may vary depending on the region.
- The supplied items are designed only for the Galaxy Buds+ and may not be compatible with other devices.
- Appearances and specifications are subject to change without prior notice.
- You can purchase additional accessories from the Samsung website. Make sure they are compatible with the Galaxy Buds+ before purchase.
- Use only Samsung-approved accessories. Using unapproved accessories may cause performance problems and malfunctions that are not covered by the warranty.
- Availability of all accessories is subject to change depending entirely on manufacturing companies. For more information about available accessories, refer to the Samsung website.

Device layout

Earbud

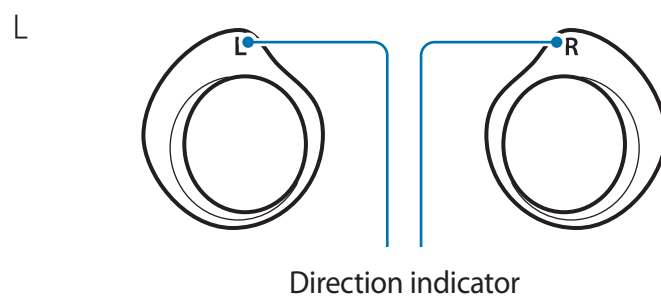
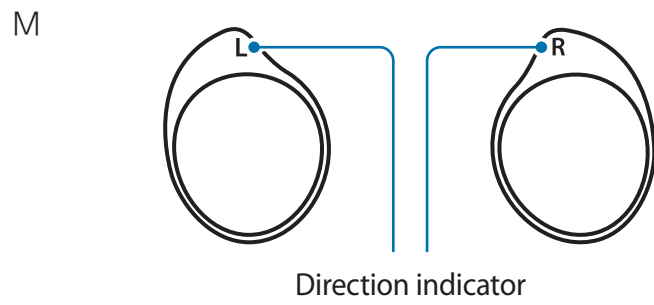
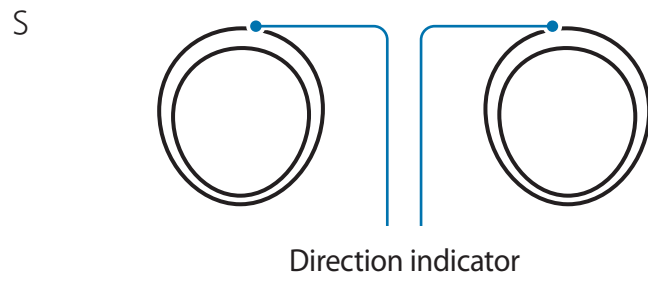


If you use the earbuds when they are broken, there may be a risk of injury. Use the earbuds only after they have been repaired at a Samsung Service Centre.

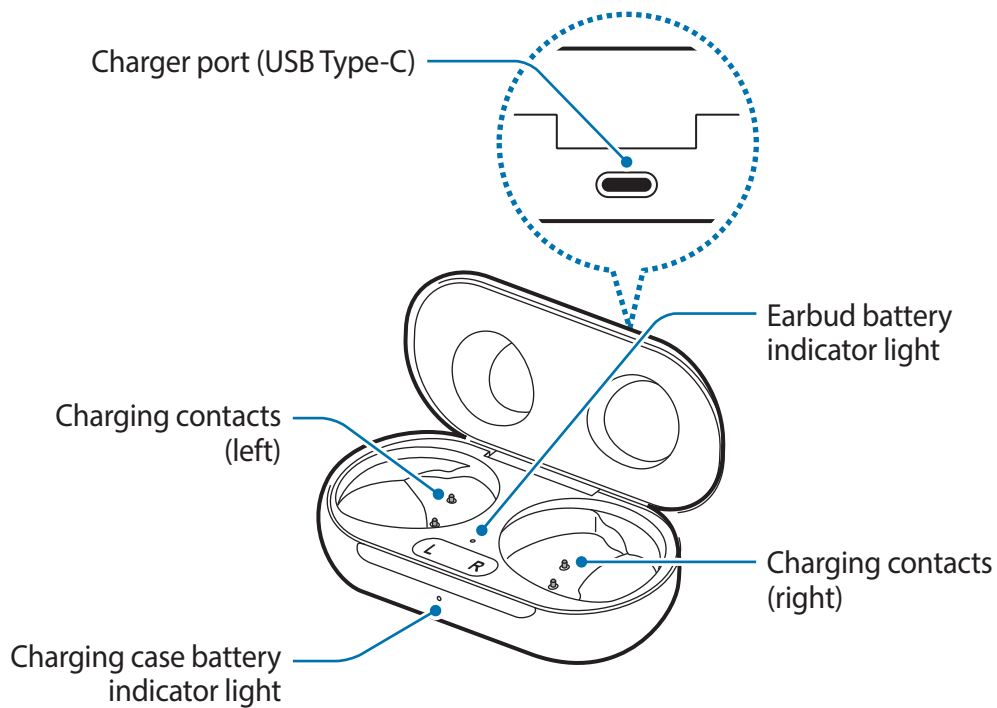


If foreign materials are placed on the touch-sensitive sensor, they may cause the sensor to malfunction. Before wearing the earbuds, clean the sensor.

Wing tip



Charging case

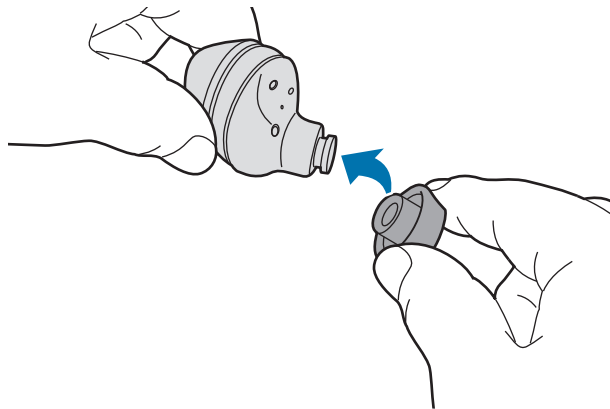


- If there is sweat or liquid on the charging contacts, corrosion may occur on the Galaxy Buds+. When there is sweat or liquid on the charging contacts or earbuds, clean them before inserting the earbuds in the charging case.
- Close the charging case when you store or charge the earbuds.

Preparing the earbuds for use

Attaching an ear tip to the earbud

- 1 Select the ear tip that fits your ear.
- 2 Cover the latch at the bottom of the earbud with the ear tip.

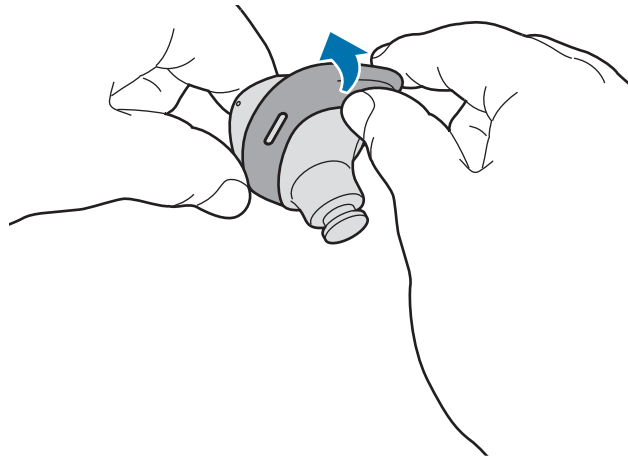


- Do not put the earbuds in your ears without ear tips. Doing so may hurt your ears.
- Do not pull the ear tip excessively when you attach or detach it. The ear tip may tear.

- 3 Follow the same procedure for the opposite earbud.

Attaching a wing tip to the earbud

- 1 Select the wing tip that fits your ear.
- 2 Select the wing tip for the left or right ear.
- 3 Hook the wing tip's groove to the earbud's fixation hook and cover the earbud with the wing tip.



- Do not put the earbuds in your ears without wing tips. Doing so may hurt your ears.
- Do not pull the wing tip excessively when you attach or detach it. The wing tip may tear.



Do not put the wing tips on the earbuds in the wrong direction. The earbuds will not fit in your ears properly.

- 4 Follow the same procedure for the opposite earbud.

Battery

Charging the battery

Fully charge the battery before using the earbuds for the first time or when they have been unused for extended periods. The earbuds will power on while charging. When you charge the battery for the first time or when the battery is completely discharged, it needs to charge for at least 10 minutes to start to work.

Check the direction of each earbud, insert them into the corresponding slots, and then connect the charger.

The built-in battery in the charging case is charged along with the earbuds that are in the charging case when it is connected to the charger.

You can charge the earbuds by placing them into the charging case that has already been charged.



Use only Samsung-approved chargers and cables. Unapproved chargers or cables can cause the battery to explode or damage the Galaxy Buds+.

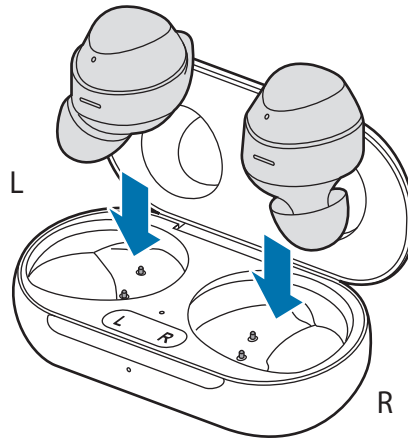


- Connecting the charger improperly may cause serious damage to the charging case. Any damage caused by misuse is not covered by the warranty.
- Use only the USB Type-C cable supplied with the device. The charging case may be damaged if you use a Micro USB cable.

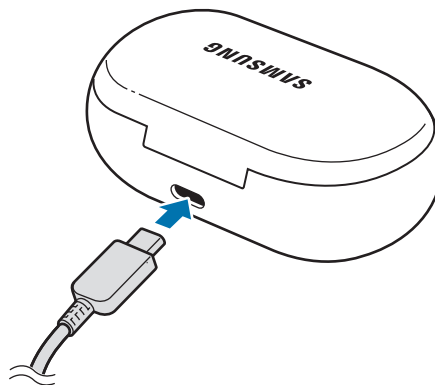


- Chargers are sold separately.
- To save energy, unplug the charger when not in use. The charger does not have a power switch, so you must unplug the charger from the electric socket when not in use to avoid wasting power. The charger should remain close to the electric socket and easily accessible while charging.
- You cannot use your earbuds' wireless features while charging the earbuds' batteries.
- Close the charging case when you store or charge the earbuds.
- If there is sweat or liquid on the charging contacts, corrosion may occur on the Galaxy Buds+. When there is sweat or liquid on the charging contacts or earbuds, clean them before inserting the earbuds into the charging case.
- Do not put the wing tips on the earbuds in the wrong direction. The earbuds will not be charged if they are not properly inserted into the charging case.

- 1 Open the charging case.
- 2 Check the direction of each earbud and correctly insert them into their corresponding slots in the charging case.



- 3 Close the charging case.
- 4 Connect the USB cable to the charger and then plug the USB cable into the charger port.



Connecting the USB cable improperly may cause serious damage to the charging case. Any damage caused by misuse is not covered by the warranty.

- 5 Plug the charger into an electric socket.
The batteries of the earbuds and the charging case are charged simultaneously.
- 6 After fully charging, disconnect the charging case from the charger. First unplug the USB cable from the charging case and then unplug the charger from the electric socket.

Reducing the battery consumption

When you are not using the earbuds, store them in the charged charging case.

Battery charging tips and precautions

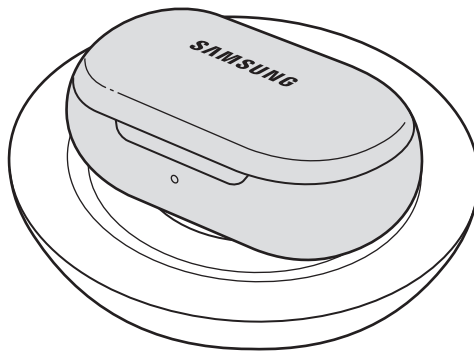
- If there is sweat or liquid on the charging contacts, corrosion may occur on the Galaxy Buds+. When there is sweat or liquid on the charging contacts or earbuds, clean them before inserting the earbuds in the charging case.
- Using a power source other than the charger, such as a computer, may result in a slower charging speed due to a lower electric current.
- While charging, the Galaxy Buds+ and the charger may heat up. This is normal and should not affect the Galaxy Buds+'s lifespan or performance. If the battery gets hotter than usual, the charger may stop charging. If this occurs during wireless charging, disconnect the Galaxy Buds+ from the charger to let them cool down, then charge the Galaxy Buds+ again later.
- If you charge the Galaxy Buds+ while the charger port is wet, the Galaxy Buds+ may be damaged. Thoroughly dry the charger port before charging the Galaxy Buds+.
- If the Galaxy Buds+ are not charging properly, take the Galaxy Buds+ and the charger to a Samsung Service Centre.
- Avoid bending the USB cable. Doing so may damage or reduce the lifespan of the USB cable. Never use a damaged USB cable.

Wireless charging

The charging case has a built-in wireless charging coil. You can charge the battery by using a wireless charger or another device that functions as a wireless charger.

Charging the battery with a wireless charger

- 1 Open the charging case.
- 2 Check the direction of each earbud and correctly insert them into their corresponding slots in the charging case.
- 3 Close the charging case.
- 4 Place the centre of the charging case's back on the centre of the wireless charger.



- 5 After fully charging, disconnect the charging case from the wireless charger.



Precautions for wireless charging


Do not place the charging case on the wireless charger when conductive materials, such as metal objects and magnets, are placed between the charging case and the wireless charger.

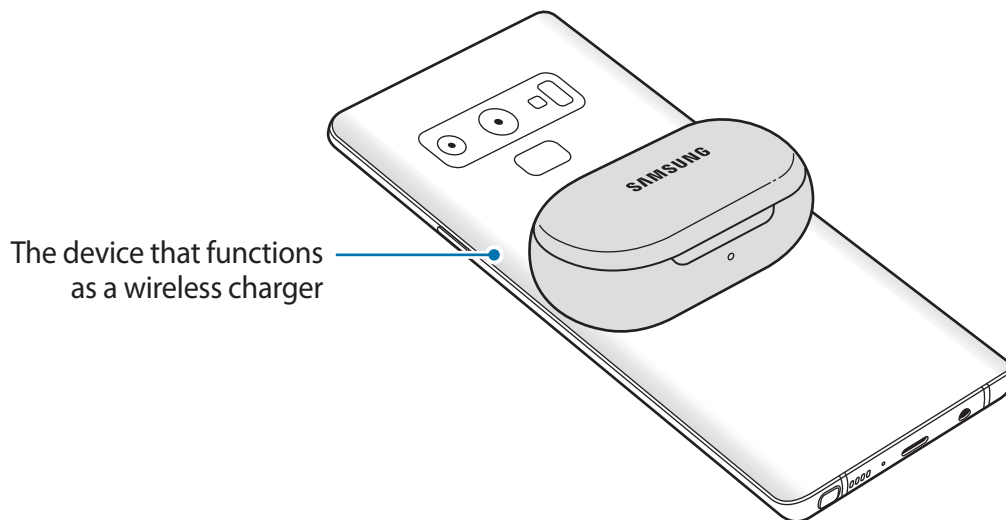
The Galaxy Buds+ may not charge properly or may overheat, or the charging case may be damaged.



Use Samsung-approved wireless chargers. If you use other wireless chargers, the battery may not charge properly.

Charging the battery using Wireless PowerShare

- 1 Open the charging case.
 - 2 Check the direction of each earbud and correctly insert them into their corresponding slots in the charging case.
 - 3 Close the charging case.
 - 4 Place the centre of the charging case's back on the device that functions as a wireless charger.
-  The location of the wireless charging coil may vary by device. Adjust the device and the charging case to make a strong connection.



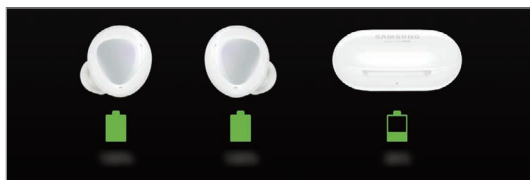
5 After fully charging, disconnect the charging case from the device that functions as a wireless charger.



- To charge properly, do not move or use either the device that functions as a wireless charger or the charging case while charging.
- The power charged to the Galaxy Buds+ may be less than the amount shared to them by the device that functions as a wireless charger.
- If you charge the Galaxy Buds+ while charging the device that functions as a wireless charger, the charging speed may decrease or the Galaxy Buds+ may not charge properly, depending on the charger type.
- The charging speed or efficiency may vary depending on the device's condition or the surrounding environment.
- If the remaining battery power of the device that functions as a wireless charger drops below a certain level, power sharing will stop.

Checking the battery level

Connect the earbuds to your mobile device, launch the **Galaxy Wearable** app on your mobile device, and view the battery status of each earbud and the charging case. Refer to [Connecting the earbuds to a mobile device](#) for more information.



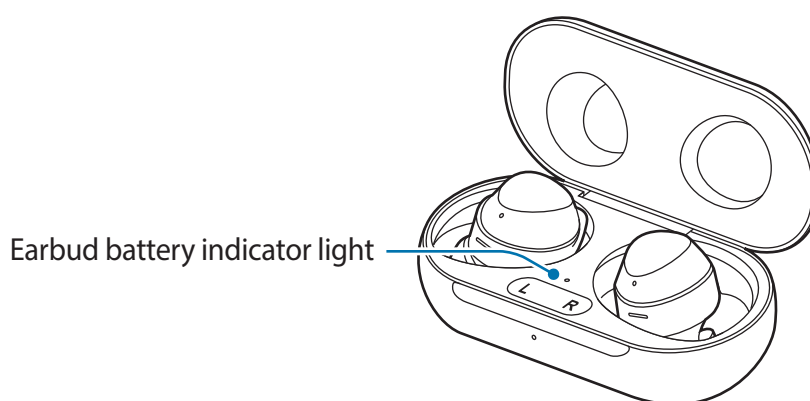
When the remaining battery level is low, a notification will appear on the mobile device's notification panel.

Battery indicator lights identification

The battery indicator lights inform you of your earbuds and the charging case's charging status.

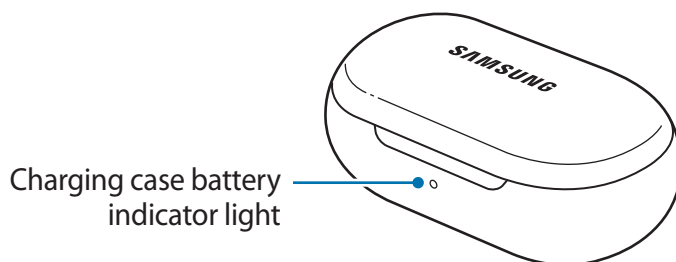
The earbud battery indicator light is located inside of the charging case and shows the charging status of the earbuds. The charging case battery indicator light on the front of the charging case indicates the charging status of the case itself.

Earbud battery indicator light



Colour	Status
Continuously red	• Charging
Continuously green	• Fully charged
Flashes red	• Charging blocked due to abnormal temperatures

Charging case battery indicator light



Colour	Status
Continuously red	• Charging
Continuously green	• Fully charged
Flashes red (rapid pace)	• Charging blocked due to abnormal temperatures
Flashes red (flashes after closing the charging case)	• Battery power is low (less than 10 %)
Red (stays on for five seconds after closing the charging case)	• Battery power is low (less than 30 %)
Yellow (stays on for five seconds after closing the charging case)	• Battery power is moderate (between 30 % and 60 %)
Green (stays on for five seconds after closing the charging case)	• Battery power is high (more than 60 %)



- The charging case battery indicator light flashes red when the external power is cut off during charging.
- If the battery indicator lights do not work as described, disconnect the charger from the charging case and reconnect it.

Using the earbuds

Connecting the earbuds to a mobile device

Connecting the earbuds to a Samsung mobile device for the first time

- 1 Check the direction of each earbud and correctly insert them into their corresponding slots in the charging case.

If the earbud battery indicator light does not flash, connect the charging case to the charger and charge them for more than 10 minutes.

- 2 Close the charging case.

- 3 Open the charging case.

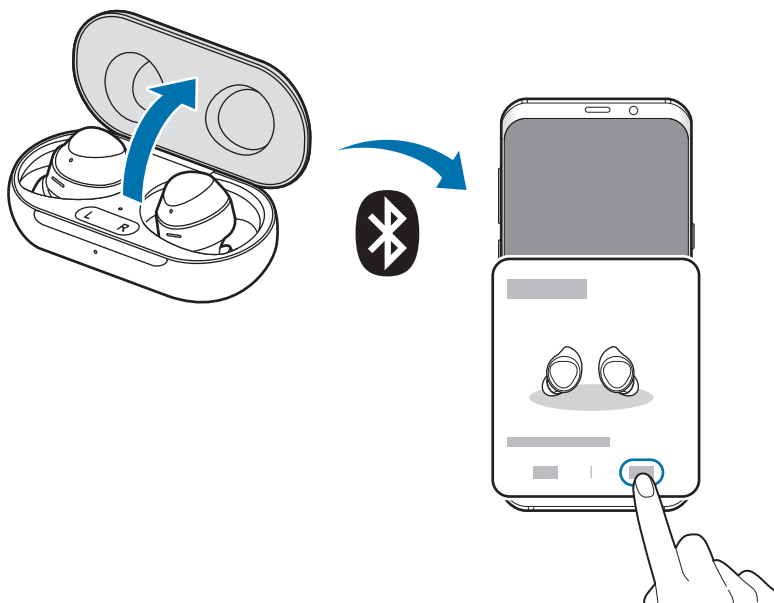
The earbuds will enter Bluetooth pairing mode automatically and a pop-up window will appear on your mobile device.

If the pop-up window does not appear or if you want to connect to a non-Samsung mobile device that also uses the Android OS, refer to [Connecting to a non-Samsung mobile device that also uses the Android OS \(or, the connection pop-up window does not appear\)](#).



When the charging case battery indicator light flashes red, remove the earbuds from the charging case and insert them into the case again.

- 4 On your mobile device, tap **Connect** on the pop-up window.



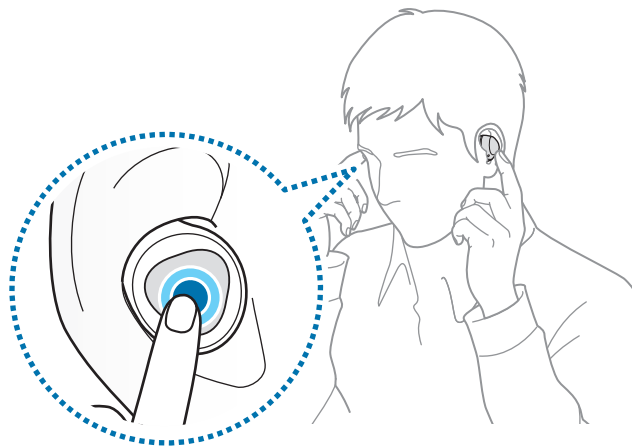
The connection pop-up window will appear only on Samsung mobile devices running Android 7.1.1 or later that have the SmartThings app installed. If the pop-up window does not appear, update the SmartThings app to the latest version.

- 5 Follow the on-screen instructions to complete the connection.

Once the earbuds are connected to your mobile device, they will automatically attempt to connect to your mobile device whenever you open the charging case while the earbuds are inside it.



- If the earbuds do not connect to a mobile device within three minutes, Bluetooth pairing mode will be deactivated. Close the charging case again and reopen it. The earbuds will enter Bluetooth pairing mode.
- If you want to connect to another mobile device after a connection has been established, refer to [Connecting with other devices after disconnecting from the previous mobile device](#).
- When connecting earbuds with a mobile device that has been signed in to a Samsung account, the earbuds pairing information will be synced on other mobile devices that use the same Samsung account and you do not need to perform the initial pairing again. To connect the other devices that use the same Samsung account with the earbuds, on the mobile devices that you want to connect, open the notification panel and tap **Media**, or tap **Settings** → **Connections** → **Bluetooth**, and then select the earbuds synced through the Samsung account.
- If only a single earbud is connected to your mobile device, you will hear the sound in mono from that earbud only. It will automatically switch to stereo mode when both earbuds are connected to your mobile device.
- If the earbuds do not connect to a mobile device, the connection pop-up window does not appear, or your mobile device cannot find the earbuds, tap and hold both earbuds' touchpads while wearing them to enter Bluetooth pairing mode manually. When Bluetooth pairing mode is entered, you will hear a sound. However, you cannot use this method when you are playing music after setting the volume adjustment as a preset tap-and-hold feature.



Connecting to a non-Samsung mobile device that also uses the Android OS (or, the connection pop-up window does not appear)

- 1 On your mobile device, launch **Galaxy Store** or **Play Store** and download the Galaxy Wearable app.



- You can download the Galaxy Wearable app only on mobile devices running Android operating system 5.0 (API 21), or later, and with 1.5 GB of RAM or more.
- You can change the language of the Galaxy Wearable app on your connected mobile device. On your mobile device, launch **Settings** → **General management** → **Language and input** → **Language**. English may appear by default if the selected language on the Settings screen is not supported on the Galaxy Wearable app.

- 2 Check the direction of each earbud and correctly insert them into their corresponding slots in the charging case.

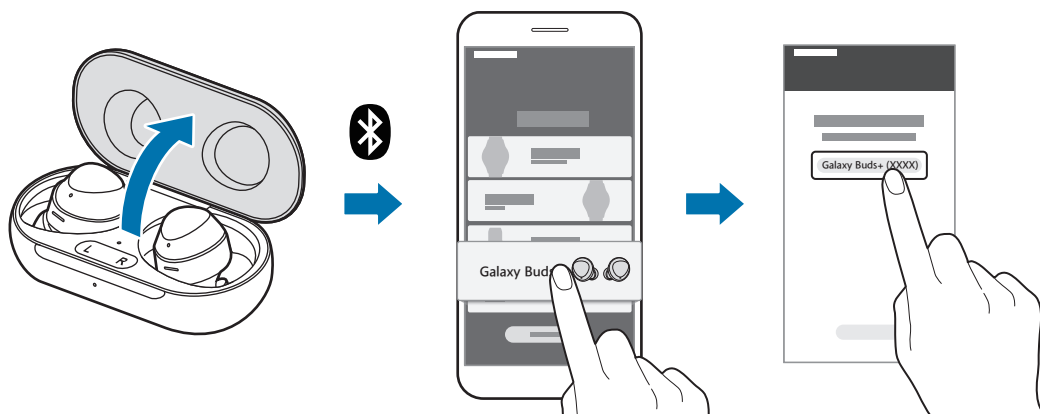
If the earbud battery indicator light does not flash, connect the charging case to the charger and charge them for more than 10 minutes.

- 3 Close the charging case.

- 4 Open the charging case.

The earbuds will enter Bluetooth pairing mode automatically.

- 5 On your mobile device, activate the Bluetooth feature to connect the earbuds to your mobile device, launch the **Galaxy Wearable** app, and then follow the on-screen instructions to complete the connection.



Tips and precautions when connecting to the mobile device

- If the earbuds do not connect to a mobile device within three minutes, Bluetooth pairing mode will be deactivated. Close the charging case again and open it. The earbuds will enter Bluetooth pairing mode.
- If you want to connect to another mobile device after a connection has been established, refer to [Connecting with other devices after disconnecting from the previous mobile device](#).
- If the earbuds do not connect to a mobile device, the connection pop-up window does not appear, or your mobile device cannot find the earbuds, tap and hold both earbuds' touchpads while wearing them to enter Bluetooth pairing mode manually. When Bluetooth pairing mode is entered, you will hear a sound. Note you cannot use this method when you are playing music after setting the volume adjustment as a preset tap-and-hold feature.
- Connection methods may vary depending on your device and software version.
- You can download the Galaxy Wearable app only on mobile devices running Android operating system 5.0 (API 21), or later, and with 1.5 GB of RAM or more.

Tips and precautions for using Bluetooth

Bluetooth is a wireless technology standard that uses a 2.4 GHz frequency to connect to various devices over short distances. It can connect and exchange data with other Bluetooth enabled devices, such as mobile devices, without connecting via cables.

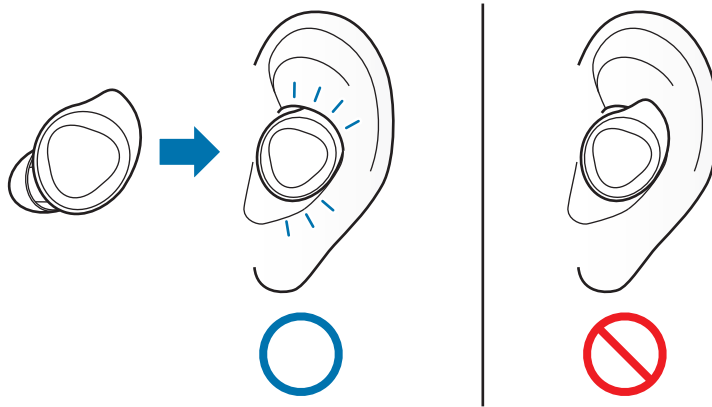


Notices for using Bluetooth

- To avoid problems when connecting your earbuds to another device, place the devices close to each other.
- Ensure that your earbuds and the other Bluetooth device are within the Bluetooth connection range (10 m). The distance may vary depending on the environment the devices are used in.
- Ensure that there are no obstacles between the earbuds and a connected device, including human bodies, walls, corners, or fences.
- Do not touch the Bluetooth antenna of a connected device.
- Bluetooth uses the same frequency as some industrial, scientific, medical, and low power products and interference may occur when making connections near these types of products.
- Some devices, especially those that are not tested or approved by the Bluetooth SIG, may be incompatible with the earbuds.
- Do not use the Bluetooth feature for illegal purposes (for example, pirating copies of files or illegally tapping communications for commercial purposes).

Wearing the earbuds

Insert the wing tips into your ears and adjust accordingly to fit your ears.



- Your device contains magnets, which may affect medical devices such as pacemakers or implantable cardioverter defibrillators. If you are using any of these medical devices, keep your device a safe distance from them and consult with your physician before you use the device.
- Keep a safe distance between your device and objects that are affected by magnets. Objects such as credit cards, passbooks, access cards, boarding passes, or parking passes may be damaged or disabled by the magnets in the device.

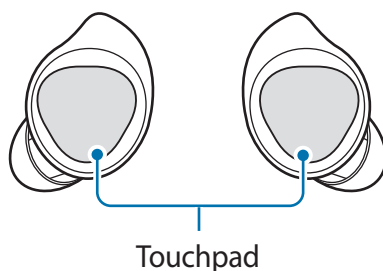


- If the touch-sensitive sensor does not make contact with your ear, the earbud may not work. Use the wing tips and ear tip that fit your ears if you do not hear a sound informing you that the earbud is detected.
- Follow all posted warnings and directions from authorized personnel in areas where the use of wireless devices is restricted, such as airplanes and hospitals.

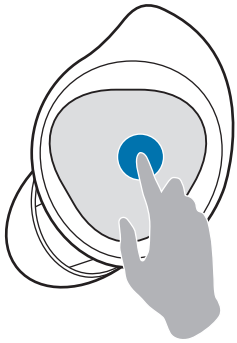
- 1 Check the direction of each earbud and put them in your ears with the wing tip facing upwards until they sit comfortably in your ears.
- 2 Adjust the earbuds by rotating them to the left or right to fit your ears.
The touch-sensitive sensor will automatically detect that you are wearing the earbuds when you put them on. Then, the earbud will emit a sound informing you that the earbud is detected.

Using the touchpad

You can control music playback, answer or reject calls, and start a conversation with Bixby by using the touchpad.



- To avoid hurting your ears, do not apply excessive pressure to the touchpad with your fingertips.
- To avoid damaging the touchpad, do not tap it with anything sharp.



Single tap

- Play or pause the track.



Double tap

- Play the next track.
- Answer or end a call.
- Place the current call on hold and answer the second call.
- Switch between the current call and the held call.



Triple tap

- Play the previous track.
 - If you triple-tap three seconds after a track begins playing, it will start the track from beginning. Triple-tap the touchpad within three seconds of when a track begins playing to play the previous track.



Tap and hold

- Activate a preset feature.
 - It is set by default to launch Bixby. Refer to [Setting a preset tap-and-hold feature](#) for more information about changing preset menus.
- Decline a call.
- Turn the microphone on or off during a call.
 - This will not display anything on the mobile device.
- Retrieve a held call after ending a current call.



If the earbuds do not connect to a mobile device, the connection pop-up window does not appear, or your mobile device cannot find the earbuds, tap and hold both earbuds' touchpads while wearing them to enter Bluetooth pairing mode manually. When Bluetooth pairing mode is entered, you will hear a sound. Note you cannot use this method when you are playing music after setting the volume adjustment as a preset tap-and-hold feature.


Using the touchpad lock feature

You can prevent unintended actions by using the touchpad lock feature.

- 1 Launch the **Galaxy Wearable** app on the mobile device.
- 2 Tap **Touchpad**.
- 3 Tap the **Lock touchpad** switch to activate it.

Setting a preset tap-and-hold feature

You can select a preset tap-and-hold feature on each earbud to activate features quickly and conveniently.

- 1 Launch the **Galaxy Wearable** app on the mobile device.
 - 2 Tap **Touchpad**.
 - 3 Tap **Left** or **Right** under **Touch and hold touchpad**.
 - 4 Select a feature that you want to use as a preset tap-and-hold feature.
 - **Voice command:** Start a conversation with an intelligent voice assistant service. When using Bixby, refer to [Using Bixby](#) for more information.
 - **Ambient sound:** Activate or deactivate ambient sound mode.
 - **Volume down/Volume up:** Adjust the volume.
-  • If you select the volume adjustment feature as one side's preset tap-and-hold feature, the other side's preset tap-and-hold feature is also automatically set to the to volume adjustment feature.
- When the volume adjustment feature has been already selected and you try to change one side's preset tap-and-hold feature, the other side's preset tap and hold feature is automatically set to launch Bixby.

Using Bixby

Bixby is a user interface that helps you use your device more conveniently.

You can talk to Bixby. Bixby will launch a function you request or show the information you want on the connected mobile device.



- This feature is available only when a mobile device that supports Bixby is connected.
- Only some languages are available depending on Bixby settings on your mobile device. Certain features may not be available depending on your region.
- When you select the volume adjustment feature as one side's preset tap-and-hold feature, the other side's preset tap-and-hold feature is automatically set to the volume adjustment feature, and you cannot launch Bixby. Refer to [Setting a preset tap-and-hold feature](#) for more information about changing preset menus.

- 1 Make sure you set a preset tap-and-hold feature for launching Bixby and tap and hold the touchpad.

Bixby will be launched on your connected mobile device.

- 2 Say what you want to Bixby.

Bixby will launch the function you request or show the information you want on the connected mobile device when it recognizes what you say through the Galaxy Buds+.

To repeat what you said before or to say something new, tap and hold the touchpad.

Tips for better voice recognition

- Speak clearly.
- Speak in quiet places.
- Do not use offensive or slang words.
- Avoid speaking in dialectal accents.

The Galaxy Buds+ may not recognize what you say or may perform unwanted commands depending on your surroundings or how you speak.

Listening to music

Listen to music saved in your mobile device by connecting the earbuds to the mobile device. You can stream music played from the connected mobile device.

On your mobile device, launch a music player app and play music.

You can listen to music through your earbuds.

Playing or pausing the track

Tap the touchpad to play and pause the track.

Playing the next track

Double-tap the touchpad to play the next track during playback.

Playing the previous track

Tap the touchpad three times to play the previous track during playback.



If you triple-tap three seconds after a track begins playing, it will start the track from beginning. Triple-tap the touchpad within three seconds of when a track begins playing to play the previous track.

Adjusting the volume

You can adjust the volume by tapping and holding the earbud's touchpad after setting it as a preset tap-and-hold feature.

- 1 Launch the **Galaxy Wearable** app on the mobile device and tap **Touchpad**.
- 2 Tap **Left** or **Right** under **Touch and hold touchpad** and select **Volume down** or **Volume up**.



If you select the volume adjustment feature as one side's preset tap-and-hold feature, the other side's preset tap-and-hold feature is also automatically set to the to volume adjustment feature.

3 Tap and hold the right earbud's touchpad to increase the volume and release your finger when you reach the desired volume.

Tap and hold the left earbud's touchpad to decrease the volume and release your finger when you reach the desired volume.

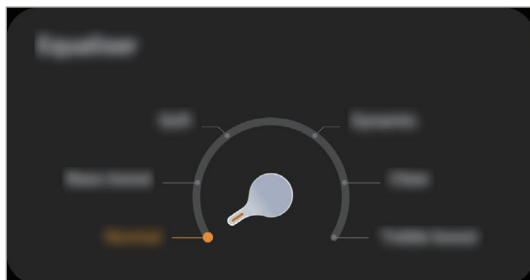


- Adjust the volume via your connected mobile device if a sound is low in your earbuds while at full volume.
- If you connect the earbuds to your mobile device while listening to music, the volume may change.

Using the equalizer

You can select from six different equalizer presets and enjoy the same music with a different and unique sound.

Launch the **Galaxy Wearable** app on the mobile device and select a preset you want on the **Equalizer** card.



Using call features

When the earbuds are connected to a mobile device, you can answer and control calls from the connected mobile device.

Answering or declining a call

When a call comes in while you are wearing the earbuds, they will emit a sound and a voice notification will inform you of the incoming call's phone number or the name saved in your contacts.

To answer the call, double-tap the touchpad.

To decline the call, tap and hold the touchpad.



If you are not notified of the incoming call's phone number or the name saved in your contacts via voice notification, launch the **Galaxy Wearable** app on the mobile device and tap **Notifications** → **Apps to get notifications from**. Then, tap ▼, select **All**, and then tap the **Incoming call** switch to activate the feature.

Answering a second call

When a second call comes in during a call, the earbuds will emit a sound.

To stay on the current call and reject an incoming second call, tap and hold the touchpad.

To place the current call on hold and answer the second call, double-tap the touchpad.

To switch between the current call and the held call, double-tap the touchpad during a call.

Turning off the microphone

Tap and hold the touchpad during a call to turn off the microphone so that the other party cannot hear you.

Ending a call

Double-tap the touchpad to end the current call.

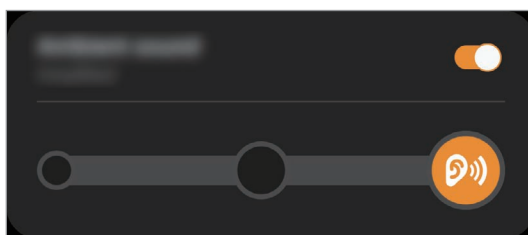
Using ambient sound mode

Hear your surroundings clearly while you are listening to music outdoors, so you can quickly detect any potentially dangerous situations.

Activate ambient sound mode from your mobile device

- 1 Launch the **Galaxy Wearable** app on the mobile device and tap the **Ambient sound** switch to activate the feature.
- 2 Drag the adjustment bar to adjust the ambient sound volume depending on the situation or place.

The ambient sound mode is activated and you can hear external sounds around you clearly.



Activate ambient sound mode by tapping and holding the touchpad

You can activate ambient sound mode by tapping and holding the earbud's touchpad after setting it as a preset tap-and-hold feature.

- 1 Launch the **Galaxy Wearable** app on the mobile device and tap **Touchpad**.
- 2 Tap **Left** or **Right** under **Touch and hold touchpad** and select **Ambient sound**.

3 Tap and hold the left or right earbud.

The ambient sound mode is activated and you can hear external sounds around you clearly.



When you activate ambient sound mode, you may hear sudden loud external sounds.



- During a call, ambient sound mode will turn off automatically. After the call, the mode returns to the previous state.
- When your earbuds do not fit in your ears or when using ear tips that do not fit your ears, feedback may occur. Attach ear tips that fit your ears and wear them properly or turn down the ambient sound volume.
- The feature can be used after you connect your earbuds to the Galaxy Wearable app for the first time.

Galaxy Wearable App

Introduction

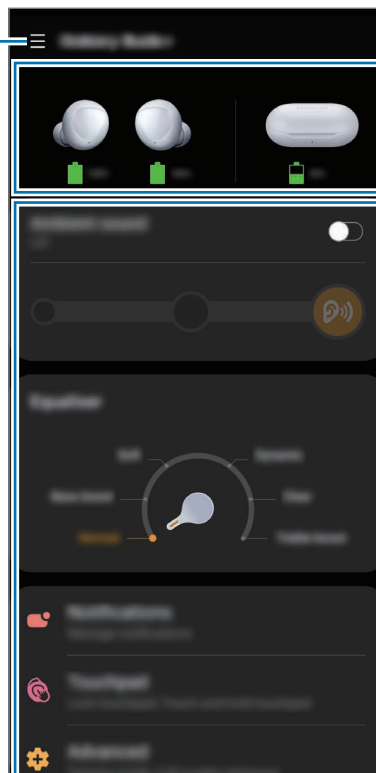
To connect the earbuds to a mobile device, you must install the Galaxy Wearable app on your mobile device. Using the Galaxy Wearable app, you can view the Galaxy Buds+ status and customize their settings.

Launch the **Galaxy Wearable** app on your connected mobile device.



- If it is the first time connecting the earbuds and a mobile device, refer to [Connecting the earbuds to a mobile device](#) for more information.
- Some features may not be available depending on the type of connected mobile device.

Access additional options.




Galaxy Buds+'s battery status

Customize your Galaxy Buds+ settings

Connecting and disconnecting the earbuds

Disconnecting mobile devices from the earbuds

Insert the earbuds into the charging case and close it. The Bluetooth connection will end.

To manually disconnect the earbuds from your mobile device, launch the **Galaxy Wearable** app on the mobile device and tap  → **Disconnect**. Or, on your mobile device, tap **Settings** → **Connections** → **Bluetooth** and unpair the earbuds and your mobile device.



The earbuds do not have a power-on/off function. If the earbuds are not used for a predefined length of time after they are removed from your ears, the earbuds will enter sleep mode and the mobile device will be disconnected. To enter Bluetooth pairing mode, close the charging case again and reopen it.

Reconnecting devices with the earbuds when temporarily disconnected

To reconnect the earbuds when they have been temporarily disconnected from a device, insert them into the charging case and close it. Then, reopen the charging case. Alternatively, tap **Connect** on the top right of the **Galaxy Wearable** app on your mobile device.

Connecting with new earbuds

You can temporarily disconnect the earbuds from your mobile device and connect additional ones.

Launch the **Galaxy Wearable** app on the mobile device and tap  → **Connect new device**.

Connecting with other devices after disconnecting from the previous mobile device

On your mobile device, tap **Settings** → **Connections** → **Bluetooth** and tap the switch to deactivate the Bluetooth feature or unpair the earbuds and your mobile device under **Paired devices**.

The connection between the earbuds and the previous mobile device will end.

Close the charging case again and open it to enter the Bluetooth pairing mode. Launch the **Galaxy Wearable** app on your mobile device and follow the on-screen instructions to complete the connection.

Switch the devices connected with the earbuds

When the earbuds are connected with two or more mobile devices, you can switch the mobile devices easily without disconnecting from the previous mobile device.

On the mobile device that you want to switch to, tap **Settings** → **Connections** → **Bluetooth**, and then select the earbuds under **Paired devices**.

Viewing Galaxy Buds+ status and customizing settings

View the status of the Galaxy Buds+ that are connected to your mobile device and change their settings.

Launch the **Galaxy Wearable** app on the mobile device.

Ambient sound

Set the earbuds to hear your surroundings clearly while you are listening to music outdoors and control the ambient sound volume depending on the situation or place.

Equalizer

Select an equalizer preset you want to use.

Notifications

You will receive notifications from the mobile device's apps via the earbuds.

Launch the **Galaxy Wearable** app on the mobile device and tap **Notifications**.

- **Read aloud while using phone:** Set the earbuds to receive notifications from the mobile device even when you are using the mobile device.
- **Apps to get notifications from:** Select the apps you want to receive notifications from and change the notification settings for each app.

Touchpad

Change the touchpad usage settings.

Launch the **Galaxy Wearable** app on the mobile device and tap **Touchpad**.

- **Lock touchpad:** Lock the earbuds' touchpads. To use the touchpad lock feature, tap the switch to activate it. Refer to [Using the touchpad lock feature](#) for more information.
- **Touch and hold the touchpad:** Select a feature to be used as a preset tap-and-hold feature. Refer to [Setting a preset tap-and-hold feature](#) for more information.

Advanced

Activate the advanced sound features for your earbuds.

Launch the **Galaxy Wearable** app on the mobile device and tap **Advanced**.

- **Use Ambient sound during calls:** Activate ambient sound mode during calls.

Find My Earbuds

If you misplace your earbuds, use the Galaxy Wearable app on your mobile device to find it.

1 Launch the **Galaxy Wearable** app on the mobile device and tap **Find My Earbuds**.

2 Tap .

Your earbuds will start beeping.

3 Tap  to stop the beeping sound for both earbuds.

Tap  under each earbud to stop the beeping sound for each earbud separately.



Do not use this feature when wearing the earbuds as it may result in hearing damage due to the loud noise.

General

You can reset all your earbuds settings.

Launch the **Galaxy Wearable** app on the mobile device and tap **General** → **Reset earbuds**.

Earbuds software update

Update your earbuds' software via the firmware over-the-air (FOTA) service.

Launch the **Galaxy Wearable** app on the mobile device and tap **Earbuds software update**.

- **Download and install:** Check for and install updates manually.
- **Auto download over Wi-Fi:** Set the earbuds to download updates automatically when connected to a Wi-Fi network.
- **Last update:** View the information for the latest software update.

Tips and user manual

View how to use the Galaxy Buds+.

Launch the **Galaxy Wearable** app on your mobile device and tap **Tips and user manual** to view the quick tips for using the Galaxy Buds+. Tap **User manual** to view the full user manual.

About earbuds

View the information of the Galaxy Buds+.

Launch the **Galaxy Wearable** app on your mobile device and tap **About earbuds**.

- **Legal information:** View the legal information for the Galaxy Buds+.
- **Software information:** View the earbuds' software information.
- **Battery information:** Check the earbuds and charging case's battery information.

Appendix

Troubleshooting

Before contacting a Samsung Service Centre, please attempt the following solutions. Some situations may not apply to your Galaxy Buds+.

Your earbuds do not work

- The battery may be completely discharged. Charge the battery completely before using the earbuds.
- If an earbud's touch-sensitive sensor does not make contact with your ear, the earbud may not work. If you do not hear a sound informing you that the earbuds are detected, remove the earbuds from your ears and put them in again.
- If the touchpad becomes unresponsive or the earbuds do not work properly, insert the earbuds into their corresponding slots in the charging case, close the charging case, and then remove them after seven seconds or more.

Bluetooth device cannot locate your earbuds

- Close the charging case and reopen it to enter the Bluetooth pairing mode.
- Ensure that your earbuds and the other Bluetooth device are within the Bluetooth connection range (10 m). The distance may vary depending on the environment the devices are used in.

If the tips above do not solve the problem, contact a Samsung Service Centre.

A Bluetooth connection is not established or your earbuds and the mobile device are disconnected

- Ensure there are no obstacles, such as walls or electrical equipment, between the devices.
- Ensure that the latest version of the Galaxy Wearable app is installed on the mobile device. If necessary, update the Galaxy Wearable app to the latest version.
- Ensure that your earbuds and the other Bluetooth device are within the Bluetooth connection range (10 m). The distance may vary depending on the environment the devices are used in.
- Restart the mobile device and relaunch the Galaxy Wearable app.

The battery does not charge properly (For Samsung-approved chargers)

- Ensure that the charging contacts of the earbuds and the charging contacts of the charging case are in contact with each other.
- Ensure that the charger is connected properly to the charging case.
- If the charging contacts are dirty, the battery may not charge properly. Wipe both gold-coloured contacts with a dry cloth and try charging the battery again.
- Visit a Samsung Service Centre and have the battery replaced.

The charging time and the battery life is different between the earbuds

- The charging time may differ between the two earbuds even if they started charging at the same time.
- The charging time and the remaining battery may differ between the two earbuds due to different inner components.

The battery depletes faster than when first purchased

- When you expose the Galaxy Buds+ or the battery to very cold or very hot temperatures, the useful charge may be reduced.
- The battery is consumable and the useful charge will get shorter over time.

You cannot hear others speaking

Adjust the volume on the connected mobile device.

Sound echoes during a call

Adjust the volume on the connected mobile device or move to another area.

Audio quality is poor

- Wireless network services may be disabled due to issues with the service provider's network. Ensure to keep the earbuds away from electromagnetic waves.
- Ensure that your earbuds and the other Bluetooth device are within the maximum Bluetooth range (10 m). The distance may vary depending on the environment the devices are used in.
- You may experience drops in volume or noise depending on the connected device's volume. To avoid this, appropriately adjust the connected device's sound.

Earbud sound lags the screen image when playing videos and games

The earbuds may have a time lag between the video and sound output when playing videos or games when connected to a mobile device.

Your Galaxy Buds+ are hot to the touch

When you use the Galaxy Buds+ for an extended period of time, they may feel hot to the touch. This is normal and should not affect the lifespan or performance.

If the Galaxy Buds+ overheat or feel hot for a prolonged period, do not use them for a while. If the Galaxy Buds+ continue to overheat, contact a Samsung Service Centre.

A small gap appears around the outside of the Galaxy Buds+

- This gap is a necessary manufacturing feature and some minor rocking or vibration of parts may occur.
- Over time, friction between parts may cause this gap to expand slightly.

Updating the earbuds' software with the Galaxy Buds Manager on your computer

You can update the earbuds' software after installing the Galaxy Buds Manager program on your computer when you use a mobile device other than an Android one.



- The Galaxy Buds Manager program can be downloaded on computers running Windows OS 7, 8, 8.1, 10 (32 bit, 64 bit), or Mac OS 10.8 or later.
- The Galaxy Buds Manager program can be connected to your earbuds when you use a computer that supports the Bluetooth feature.

Installing Galaxy Buds Manager

Download the Galaxy Buds Manager program on your computer from the Samsung Website (www.samsung.com/ca) and follow the on-screen instructions to complete the installation.

Updating the earbuds' software

Galaxy Buds+

- 1 Check the direction of earbud and correctly insert them into their corresponding slots in the charging case.

If the earbud battery indicator light does not flash, connect the charging case to the charger and charge them for more than 10 minutes.

- 2 Close the charging case.

- 3 Open the charging case.

The earbuds will enter Bluetooth pairing mode automatically.



To enter Bluetooth pairing mode manually, tap and hold both earbuds' touchpads while wearing them.

Computer

- 1 Activate the Bluetooth feature.
- 2 Launch the Galaxy Buds Manager program and select **Connect**.
The earbuds and the Galaxy Buds Manager will be connected.
- 3 Select **Check for updates** to check the current earbuds' software version and whether they need to be updated, and then select **Download and Install**.
The earbuds' software will be updated.

Managing the Galaxy Buds+

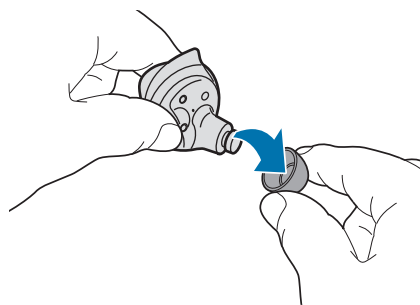
Basic maintenance

- Use a soft, dry cloth to clean the earbuds after use.
- Keep the earbuds dry. Prevent liquid from contacting or entering the earbuds.

Cleaning the receiver

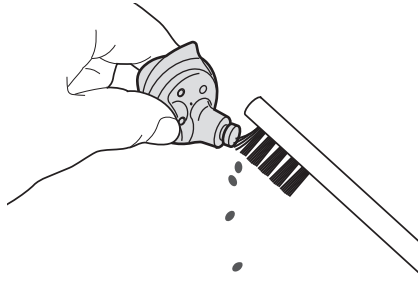
If the volume is lower than it should be with the current setting, clean the receiver.

- 1 Remove the ear tip from the protruding part at the bottom of the earbud.



Do not pull the ear tip excessively when you attach or detach it. The ear tip may tear.

- 2 Remove any earwax or debris from the receiver with the brush or other tools.

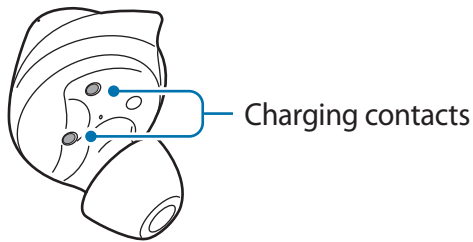


Do not use excessive force while removing earwax or debris. The receiver may be damaged.

- 3 Cover the earbud with the ear tip.

Cleaning the charging contacts

If the battery does not charge properly, wipe both gold-coloured contacts with a dry cloth.



Cleaning the earbuds and charging case

When the charging case and earbuds are exposed to foreign materials, such as dust, sand, or metal shavings, the Galaxy Buds+ may not charge properly or may be damaged. If the earbuds or the charging case were exposed to foreign materials, wipe them with a soft and dry cloth before inserting them into the charging case.

Restarting the earbuds

If the touchpad becomes unresponsive or the earbuds do not work properly, restart the earbuds.

To reset and restart the earbuds, insert the earbuds into their corresponding slots in the charging case and remove them after seven seconds or more.



If the charging case has low battery, connect the charging case to the charger first.

Coupling the earbuds

If you lose one of the earbuds, you do not have to purchase a new set. You can purchase a single earbud and couple it with your remaining earbud.

1 Check the direction of each earbud (the newly purchased earbud and the previously used earbud), and correctly insert them into their corresponding slot in the charging case.

2 Tap and hold both earbuds' touchpads for seven seconds or more.

When the earbud battery indicator light flashes green and turns off, the earbuds are coupled.



The earbud battery indicator light will keep flashing green when the earbuds are not coupled properly. Remove the earbuds from the charging case and insert them again. Then, tap and hold both earbuds' touchpads for seven seconds or more.

3 Connect the earbuds to a mobile device. For more information, refer to [Appendix](#).

Removing the battery

- **To remove the battery, contact an authorized service centre.**
- For your safety, you **must not attempt to remove** the battery. If the battery is not properly removed, it may lead to damage to the battery and device, cause personal injury, and/or result in the device being unsafe.
- Samsung does not accept liability for any damage or loss (whether in contract or tort, including negligence) which may arise from failure to precisely follow these warnings and instructions, other than death or personal injury caused by Samsung's negligence.

Health and Safety

Please read this important safety information before you use the device. It contains general safety information for devices and may include content that does not apply to your device. Follow the warning and caution information to prevent injury to yourself or others and to prevent damage to your device.



The term 'device' refers to the product and its charger, the items supplied with the product, and any Samsung-approved accessories used with the product.



Warning: Failure to comply with safety warnings and regulations can cause serious injury or death.

Do not use damaged power cords or plugs, or loose electrical sockets

Unsecured connections can cause electric shock or fire.

Do not touch the device, power cords, plugs, or the electric socket with wet hands or other wet body parts

Doing so may cause electric shock.

Do not pull the power cord excessively when disconnecting it

Doing so may cause electric shock or fire.

Do not bend or damage the power cord

Doing so may cause electric shock or fire.

Do not use the device with wet hands while the device is charging

Doing so may cause electric shock.

Do not directly connect together the charger's positive and negative terminals

Doing so may cause fire or serious injury.

Do not use your device outdoors during a thunderstorm

Doing so may result in electric shock or device malfunction.

Use manufacturer-approved chargers, accessories, and supplies

- Using generic chargers may shorten the life of your device or cause the device to malfunction. They may also cause a fire or cause the battery to explode.
- Use only a Samsung-approved charger specifically designed for your device. An incompatible charger can cause serious injuries or damage to your device.
- Samsung cannot be responsible for the user's safety when using accessories or supplies that are not approved by Samsung.

Do not carry your device in your back pockets or on your waist

- The device may be damaged, explode, or result in a fire if too much pressure is applied to it.
- You may be injured if you are bumped or fall.

Do not drop or cause an impact to the charger or the device

Handle and dispose of the device and charger with care

- Never dispose of the device in a fire. Never place the device on or in heating devices, such as microwave ovens, stoves, or radiators. The device may explode when overheated. Follow all local regulations when disposing of used battery or device.
- Never crush or puncture the device.
- Avoid exposing the device to high external pressure, which can lead to an internal short circuit and overheating.

Protect the device and charger from damage

- Avoid exposing your device to very cold or very hot temperatures.
- Extreme temperatures can damage the device and reduce the charging capacity and life of your device and battery.
- Never use a damaged charger or device.

Do not store your device near or in heaters, microwaves, hot cooking equipment, or high pressure containers

- The battery may leak.
- Your device may overheat and cause a fire.

Do not use or store your device in areas with high concentrations of dust or airborne materials

Dust or foreign materials can cause your device to malfunction and may result in fire or electric shock.

Prevent the charger from contact with conductive materials, such as liquids, dust, metal powders, and pencil leads. Do not touch the multipurpose jack with sharp tools or cause an impact to the multipurpose jack

Conductive materials may cause a short circuit or corrosion of the terminals, which may result in an explosion or fire.

Do not bite or suck the device

- Doing so may damage the device or result in an explosion or fire.
- Children or animals can choke on small parts.
- If children use the device, make sure that they use the device properly.

Do not insert the device or supplied accessories into the eyes, ears, or mouth

Doing so may cause suffocation or serious injuries.

Do not handle a damaged or leaking Lithium Ion (Li-Ion) battery

For safe disposal of your Li-Ion battery, contact your nearest authorized service centre.



Caution: Failure to comply with safety cautions and regulations can cause injury or property damage

Do not use your device near other electronic devices

- Most electronic devices use radio frequency signals. Your device may interfere with other electronic devices.

Do not use your device in a hospital, on an aircraft, or in automotive equipment that can be interfered with by radio frequency

- Avoid using your device within a 15 cm range of a pacemaker, if possible, as your device can interfere with the pacemaker.
- If you use medical equipment, contact the equipment manufacturer before using your device to determine whether or not the equipment will be affected by radio frequencies emitted by the device.
- On an aircraft, using electronic devices can interfere with the aircraft's electronic navigational instruments. Make sure the device is turned off during takeoff and landing.
- Electronic devices in your car may malfunction due to radio interference from your device. Contact the manufacturer for more information.

Do not expose the device to heavy smoke or fumes

- Doing so may damage the outside of the device or cause it to malfunction.

If you use a hearing aid, contact the manufacturer for information about radio interference

The radio frequency emitted by your device may interfere with some hearing aids. Before using your device, contact the manufacturer to determine whether or not your hearing aid will be affected by radio frequencies emitted by the device.

Do not use your device near devices or apparatuses that emit radio frequencies, such as sound systems or radio towers

Radio frequencies may cause your device to malfunction.

Turn off the device in potentially explosive environments

- Turn off your device in potentially explosive environments instead of removing the battery.
- Always comply with regulations, instructions and signs in potentially explosive environments.
- Do not use your device at refuelling points (gas stations), near fuels or chemicals, or in blasting areas.
- Do not store or carry flammable liquids, gases, or explosive materials in the same compartment as the device, its parts, or accessories.

If you notice strange smells or sounds coming from your device, or if you see smoke or liquids leaking from the device, stop using the device immediately and take it to a Samsung Service Centre

Failure to do so may result in fire or explosion.

Comply with all safety warnings and regulations regarding mobile device usage while operating a vehicle

While driving, safely operating the vehicle is your first responsibility. Never use your mobile device while driving, if it is prohibited by law. For your safety and the safety of others, use your common sense and remember the following tips:

- Get to know your device and its convenience features.
- Suspend use in heavy traffic or hazardous weather conditions. Rain, sleet, snow, ice, and heavy traffic can be hazardous.
- Do not take notes or look up phone numbers. Jotting down a “to do” list or flipping through your address book takes attention away from your primary responsibility of driving safely.

- Do not engage in stressful or emotional conversations that may be distracting. Make the person you are talking to aware that you are driving and suspend conversations that could potentially divert your attention from the road.

Care for and use your mobile device properly

Keep your device dry

- Humidity and liquids may damage the parts or electronic circuits in your device.
- Do not turn on your device if it is wet. If your device is already on, turn it off (if the device will not turn off, leave it as-is). Then, dry the device with a towel and take it to a service centre.
- This device has internal liquid indicators fitted. Water damage to your device may void the manufacturer's warranty.

Store your device only on flat surfaces

- If your device falls, it may be damaged.

The device can be used in locations with an ambient temperature of 0°C to 35°C. You can store the device at an ambient temperature of -20°C to 50°C. Using or storing the device outside of the recommended temperature ranges may damage the device or reduce the battery's lifespan

- Do not store your device in very hot areas such as inside a car in the summertime. Doing so may cause the screen to malfunction, result in damage to the device, or cause the battery to explode.
- Do not expose your device to direct sunlight for extended periods of time (on the dashboard of a car, for example).

Do not store your device with metal objects, such as coins, keys, and necklaces

- Your device may be scratched or may malfunction.
- If the charging terminals come into contact with metal objects, this may cause a fire.

Do not store your device near magnetic fields

- Your device may malfunction or the battery may discharge from exposure to magnetic fields.
- Magnetic stripe cards, including credit cards, phone cards, passbooks, and boarding passes, may be damaged by magnetic fields.

Prolonged exposure of your skin to an overheated device may cause low temperature burn symptoms, such as red spots and pigmentation

Protect your hearing and ears



- Excessive exposure to loud sounds can cause hearing damage.
- Exposure to loud sounds while walking may distract your attention and cause an accident.
- Always turn the volume down before connecting the earbuds to an audio source and use only the minimum volume setting necessary to hear your conversation or music.
- In dry environments, static electricity can build up in the earbuds. Avoid using earbuds in dry environments or touch a metal object to discharge static electricity.
- Do not use earbuds while driving or riding. Doing so may distract your attention and cause an accident, or may be illegal, depending on your region.

Use caution when using the device while walking or moving

- Always be aware of your surroundings to avoid injury to yourself or others..

Do not paint or put stickers on your device

- Paint and stickers can clog moving parts and prevent proper operation.
- If you are allergic to paint or metal parts of the device, you may experience itching, eczema, or swelling of the skin. When this happens, stop using the device and consult your physician.

Do not drop your device or cause impacts to your device

- Your device may be damaged or may malfunction.
- If bent or deformed, your device may be damaged or parts may malfunction.

Ensure maximum battery and charger life

- Batteries may malfunction if they are not used for extended periods.
- Over time, unused device will discharge and must be recharged before use.
- Disconnect the charger from power sources when not in use.
- Follow all instructions in this manual to ensure the longest lifespan of your device and battery. Damage or poor performance caused by failure to follow warnings and instructions can void your manufacturer's warranty.
- Your device may wear out over time. Some parts and repairs are covered by the warranty within the validity period, but damages or deterioration caused by using unapproved accessories are not.

Do not disassemble, modify, or repair your device

- Any changes or modifications to your device can void your manufacturer's warranty. If your device needs servicing, take your device to a Samsung Service Centre.
- Do not disassemble or puncture the battery, as this can cause explosion or fire.

When cleaning your device, mind the following

- Wipe your device or charger with a towel or an eraser.
- Do not use chemicals or detergents. Doing so may discolour or corrode the outside the device or may result in electric shock or fire.

Do not use the device for anything other than its intended use

- Your device may malfunction.

Avoid disturbing others when using the device in public

Allow only qualified personnel to service your device

- Allowing unqualified personnel to service your device may result in damage to your device and will void your manufacturer's warranty.

Acknowledging Special Precautions and ISED (Innovation, Science and Economic Development Canada) Notice

Cautions

Any changes or modifications to your device not expressly approved in this document could void your warranty for this equipment, and void your authority to operate this equipment. Only use approved batteries, antennas, and chargers. The use of any unauthorized accessories may be dangerous and void the phone warranty if they cause damage or a defect to the device.

Although your device is quite sturdy, it is a complex piece of equipment and can be broken. Avoid dropping, hitting, bending, or sitting on it.

Information to User

This equipment has been tested and found to comply with the limits of a Class B digital device. These limits are designed to provide reasonable protection against harmful interference in a residential installation. This equipment generates, uses, and can radiate radio frequency energy and, if not installed and used in accordance with the instructions, may cause harmful interference to radio communications. However, there is no guarantee that interference will not occur in a particular installation; if this equipment does cause harmful interference to radio or television reception, which can be determined by turning the equipment off and on, the user is encouraged to try to correct the interference by one or more of the following measures:

- Reorient/relocate the receiving antenna.
- Increase the separation between the equipment and receiver.
- Connect the equipment into an outlet on a circuit different from that to which the receiver is connected.
- Consult the dealer or an experienced radio/TV technician for help.



Warning: At very high volumes, prolonged listening to a headset can damage your hearing.

IC RF Radiation Exposure Statement:

This equipment complies with IC RF Radiation exposure limits set forth for an uncontrolled environment.

This device and its antenna must not be co-located or operating in conjunction with any other antenna or transmitter.

Specific Absorption Rates (SAR) for Wireless Devices

The SAR is a value that corresponds to the relative amount of RF energy absorbed by the user of a wireless device.

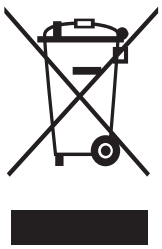
The SAR value of a device is the result of an extensive testing, measuring and calculation process. It does not represent how much RF the device emits. All devices are tested at their highest value in strict laboratory settings. But when in operation, the SAR of a device can be substantially less than the level reported to ISED. This is because of a variety of factors including its proximity to a base station antenna, design and other factors. What is important to remember is that each device meets strict federal guidelines. Variations in SAR do not represent a variation in safety.

All devices must meet the federal standard, which incorporates a substantial margin of safety. These standards prevent the sale of mobile devices with SAR that exceeds a maximum of 1.6 W/kg (head and trunk) and 4.0 W/kg (limbs).

This device has been tested and meets RF exposure guidelines when used with an accessory that contains no metal and that positions the mobile device 0mm from the body.

Correct disposal of this product

(Waste Electrical & Electronic Equipment)



This marking on the product, accessories or literature indicates that the product and its electronic accessories (e.g., charger, headset, USB cable) should not be disposed of with other household waste.

To prevent possible harm to the environment or human health from uncontrolled waste disposal, please separate these items from other types of waste and recycle them responsibly to promote the sustainable reuse of material resources.

Household users should contact either the retailer where they purchased this product, or their local government office, for details of where and how they can take these items for environmentally safe recycling.

Business users should contact their supplier and check the terms and conditions of the purchase contract. This product and its electronic accessories should not be mixed with other commercial wastes for disposal.

This product is RoHS compliant.

Correct disposal of batteries in this product



This marking on the battery, manual or packaging indicates that the batteries in this product should not be disposed of with other household waste at the end of their working life. Where marked, the chemical symbols Hg, Cd or Pb indicate that the battery contains mercury, cadmium or lead above the reference levels in EC Directive 2006/66.

Disclaimer

Some content and services accessible through this device belong to third parties and are protected by copyright, patent, trademark and/or other intellectual property laws. Such content and services are provided solely for your personal non-commercial use. You may not use any content or services in a manner that has not been authorized by the content owner or service provider. Without limiting the foregoing, unless expressly authorized by the applicable content owner or service provider, you may not modify, copy, republish, upload, post, transmit, translate, sell, create derivative works, exploit, or distribute in any manner or medium any content or services displayed through this device.

“THIRD PARTY CONTENT AND SERVICES ARE PROVIDED “AS IS.” SAMSUNG DOES NOT WARRANT CONTENT OR SERVICES SO PROVIDED, EITHER EXPRESSLY OR IMPLIED, FOR ANY PURPOSE. SAMSUNG EXPRESSLY DISCLAIMS ANY IMPLIED WARRANTIES, INCLUDING BUT NOT LIMITED TO, WARRANTIES OF MERCHANTABILITY OR FITNESS FOR A PARTICULAR PURPOSE. SAMSUNG DOES NOT GUARANTEE THE ACCURACY, VALIDITY, TIMELINESS, LEGALITY, OR COMPLETENESS OF ANY CONTENT OR SERVICE MADE AVAILABLE THROUGH THIS DEVICE AND UNDER NO CIRCUMSTANCES, INCLUDING NEGLIGENCE, SHALL SAMSUNG BE LIABLE, WHETHER IN CONTRACT OR TORT, FOR ANY DIRECT, INDIRECT, INCIDENTAL, SPECIAL OR CONSEQUENTIAL DAMAGES, ATTORNEY FEES, EXPENSES, OR ANY OTHER DAMAGES ARISING OUT OF, OR IN CONNECTION WITH, ANY INFORMATION CONTAINED IN, OR AS A RESULT OF THE USE OF ANY CONTENT OR SERVICE BY YOU OR ANY THIRD PARTY, EVEN IF ADVISED OF THE POSSIBILITY OF SUCH DAMAGES.”

Third party services may be terminated or interrupted at any time, and Samsung makes no representation or warranty that any content or service will remain available for any period of time. Content and services are transmitted by third parties by means of networks and transmission facilities over which Samsung has no control. Without limiting the generality of this disclaimer, Samsung expressly disclaims any responsibility or liability for any interruption or suspension of any content or service made available through this device.

Samsung is neither responsible nor liable for customer service related to the content and services. Any question or request for service relating to the content or services should be made directly to the respective content and service providers.

Copyright

Copyright © 2020 Samsung Electronics

This manual is protected under international copyright laws.

No part of this manual may be reproduced, distributed, translated, or transmitted in any form or by any means, electronic or mechanical, including photocopying, recording, or storing in any information storage and retrieval system.

Trademarks

- SAMSUNG and the SAMSUNG logo are registered trademarks of Samsung Electronics.
- Bluetooth® is a registered trademark of Bluetooth SIG, Inc. worldwide.



- All other trademarks and copyrights are the property of their respective owners.

ISED Notice

This Class B digital apparatus complies with Canadian ICES-003.

This device complies with Innovation, Science and Economic Development Canada licence-exempt RSS standard(s). Operation is subject to the following two conditions:

- (1) this device may not cause interference, and
- (2) this device must accept any interference, including interference that may cause undesired operation of the device.